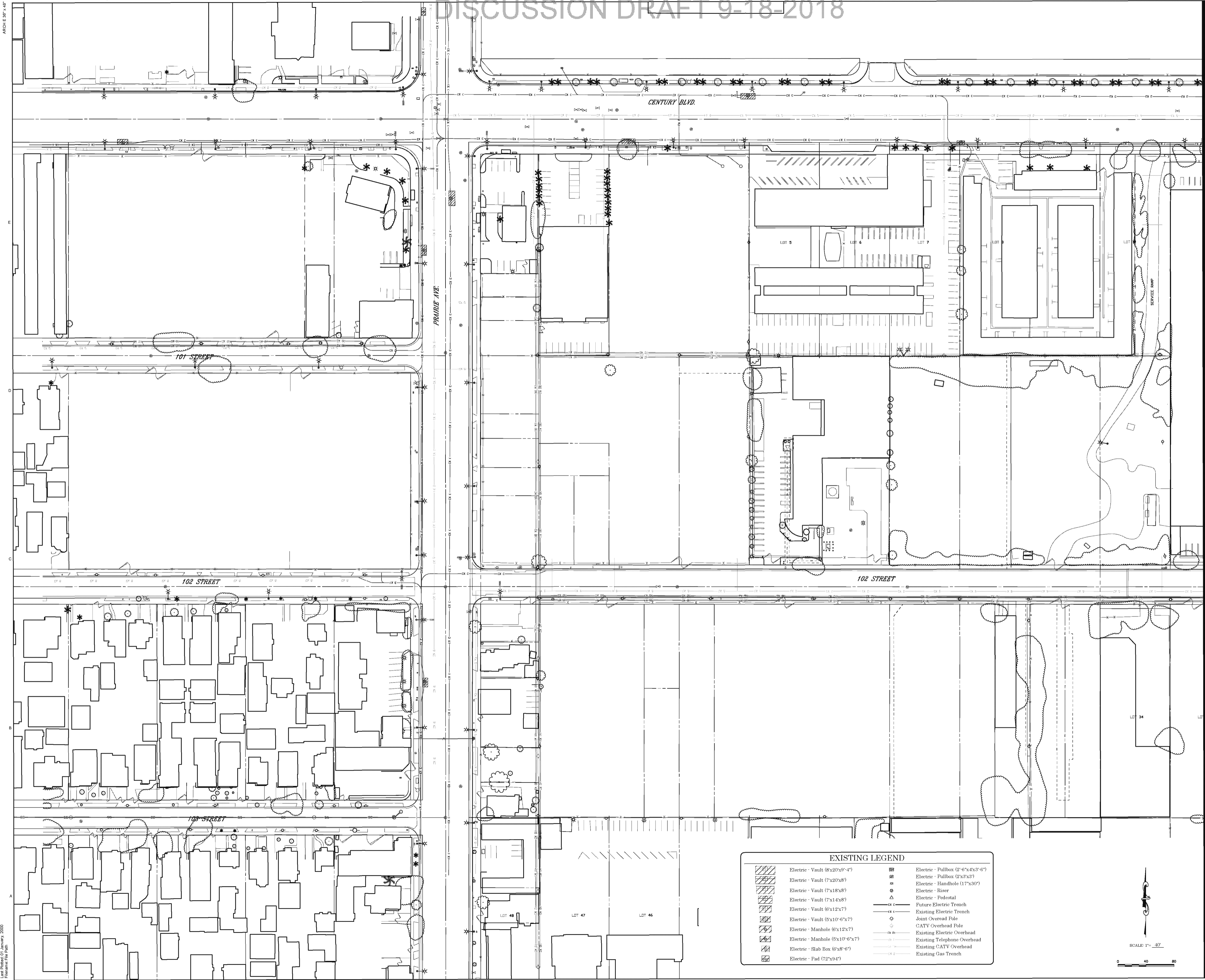


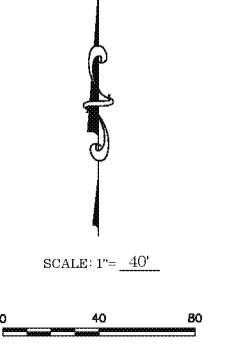


IR	DATE	DESCRIPTION
SEP 14, 2018	ER DOCUMENTS	



EXISTING LEGEND

	Electric - Vault (8x20x9'-4")		Electric - Pullbox (2'-6"x4x3'-0")
	Electric - Vault (7x20x8)		Electric - Pullbox (2'x3'x3')
	Electric - Vault (7x18x8)		Electric - Handhole (17"x30")
	Electric - Vault (7x14x8)		Electric - Riser
	Electric - Vault (6'x12x7)		Electric - Pedestal
	Electric - Vault (5'x10'-6"x7)		Future Electric Trench
	Electric - Manhole (6'x12x7)		Existing Electric Trench
	Electric - Manhole (5'x10'-6"x7)		Joint Overhead Pole
	Electric - Slab Box (6'x8'-6")		CATV Overhead Pole
	Electric - Pad (72"x9'4")		Existing Electric Overhead
			Existing Telephone Overhead
			Existing CATV Overhead
			Existing Gas Trench



Project Management Initials: Approved: AFR
 Designer: DSC
 Checker: JAC
 File Name: File Path

Printed on Plot Converter



REGISTRATION

This drawing has been prepared for the use of AECOM's client and may not be used, reproduced or relied upon by third parties, except as agreed by AECOM and its client, as required by law or for use by governmental reviewing agencies. AECOM accepts no responsibility, and denies any liability whatsoever, to any party that modifies this drawing without AECOM's express written consent. Do not scale this document. All measurements must be obtained from the stated dimensions.

NOT FOR
CONSTRUCTION

ISSUE/REVISION

NO.	DATE	DESCRIPTION
1	SEP 14, 2018	ERR DOCUMENTS

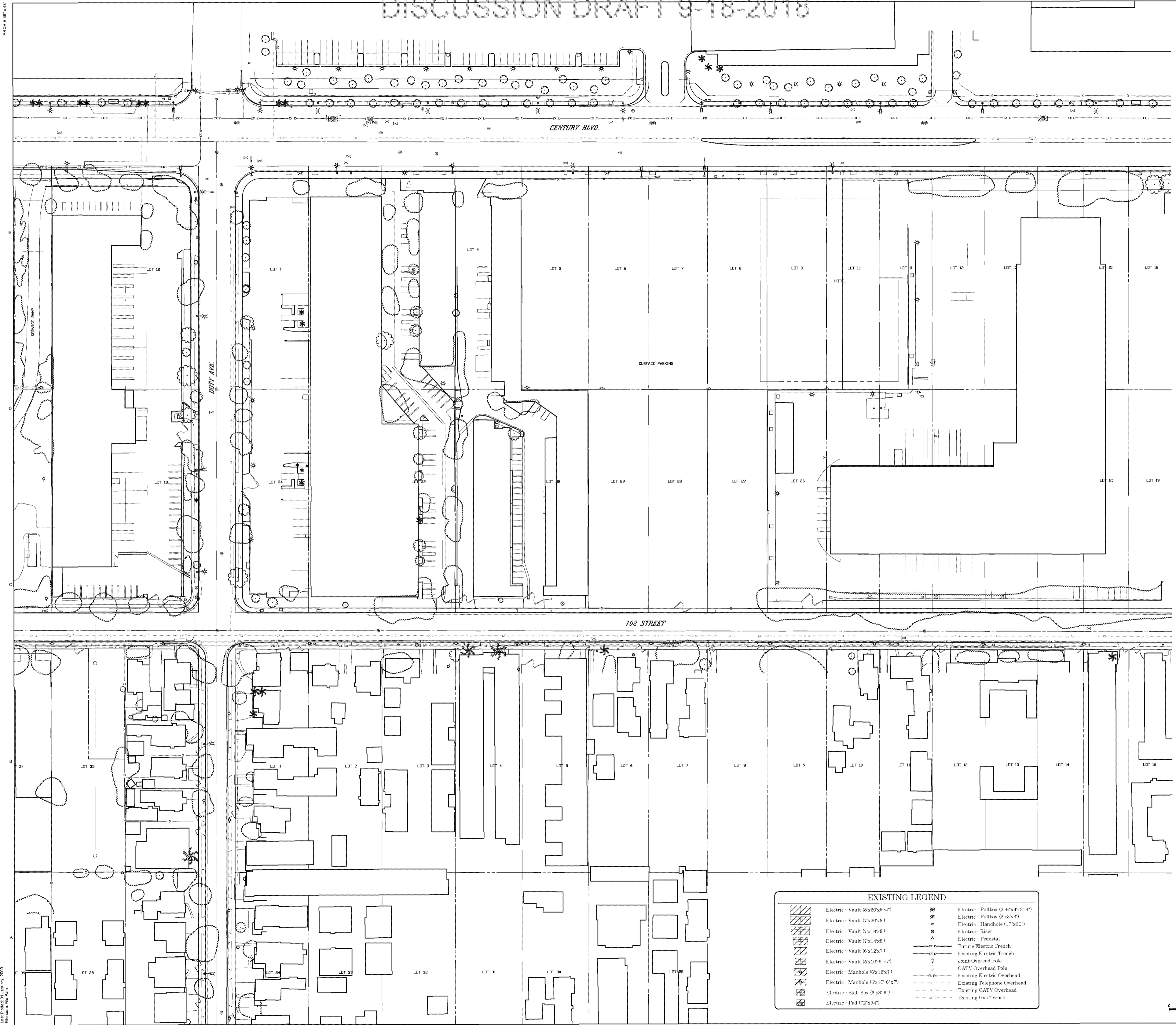
KEY PLAN

PROJECT NUMBER
60545923

SHEET TITLE
EXISTING DRY UTILITIES

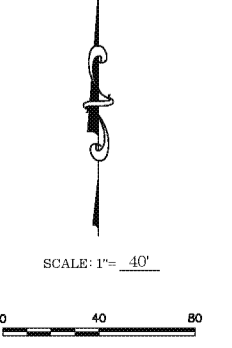
SHEET NUMBER
CD-101A

© 2015 AECOM TECHNICAL SERVICES, INC.



EXISTING LEGEND

	Electric - Vault (8x20x9'-4")		Electric - Pullbox (2'-6"x4x3'-6")
	Electric - Vault (7x20x8")		Electric - Pullbox (2'x3'x3')
	Electric - Vault (7x18x8")		Electric - Handhole (17'x30')
	Electric - Vault (7x14x8")		Electric - Busbar
	Electric - Vault (6'x12x7')		Electric - Pedestal
	Electric - Vault (5'x10'-6"x7')		Future Electric Trench
	Electric - Manhole (6'x12x7')		Existing Electric Trench
	Electric - Manhole (5'x10'-6"x7')		Joint Overhead Pole
	Electric - Slab Box (6'x8'-6")		CATV Overhead Pole
	Electric - Pad (72'x9'4")		Existing Electric Overhead
			Existing Telephone Overhead
			Existing CATV Overhead
			Existing Gas Trench



Project Management Initials: Approved: AFR
Designer: DSC Checked: CHK
Date: 09/18/2018
File Name: File Path



DEVELOPER

MURPHY'S BOWL
LLC
19400 E 4TH ST, SUITE 3000
BELLEVUE, WA 98004

DEVELOPER'S MANAGING AGENT

WILSON MEANY
4701 Center Drive, Suite 650
Los Angeles, CA 90045
310.362.6000 tel
http://wilsonmeany.com

ARCHITECT / PLANNING /
ENGINEERING / TRANSPORTATION

AECOM

AECOM TECHNICAL SERVICES, INC.
2380 McGee, Suite 200
Kansas City, MO 64108
816.881.4403 tel 816.991.2693 fax
www.aecom.com

CIVIL ENGINEER

D&D
ENGINEERING, INC
8901 S. La Cienega Blvd, Suite 106
Inglewood, CA 90304
424.393.4122 tel

DRY UTILITY SYSTEMS

BJ PALMER &
ASSOCIATES, INC
28245 Crocker Avenue
Van Nuys, CA 91410
760.942.7510 tel

PARKING

WALKER
CONSULTANTS
608 S. Olive St, Suite 1100
Los Angeles, CA 90014
213.485.8811 tel

SHORING ENGINEER

DRS
ENGINEERING, INC
3564 Sagunto Street, Suite 488
Santa Ynez, CA 93460
818.462.3982 tel

REGISTRATION

This drawing has been prepared for the use of AECOM's client and may not be used, reproduced or relied upon by third parties, except as agreed by AECOM and its client, as required by law or for use by governmental reviewing agencies. AECOM accepts no responsibility, and denies any liability whatsoever, to any party that modifies this drawing without AECOM's express written consent. Do not scale this document. All measurements must be obtained from the stated dimensions.

NOT FOR
CONSTRUCTION

ISSUE/REVISION

NO.	DATE	DESCRIPTION

KEY PLAN

SEP 14, 2018	EIR DOCUMENTS	
IR	DATE	DESCRIPTION

PROJECT NUMBER

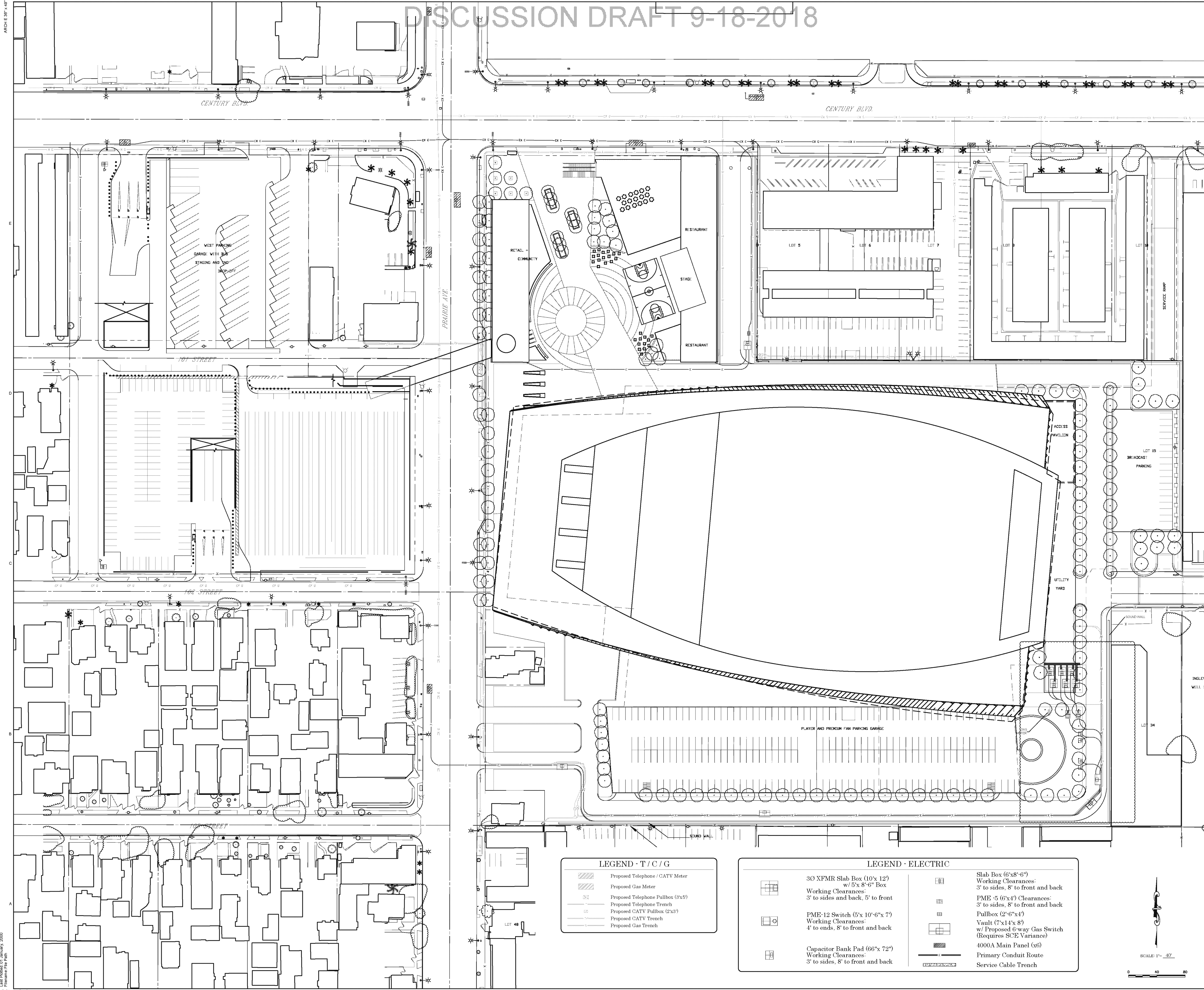
60545923

SHEET TITLE

PROPOSED DRY UTILITIES

SHEET NUMBER

CD-102A

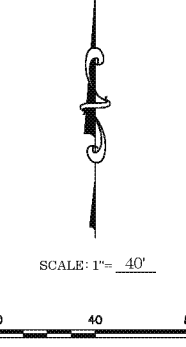


LEGEND - T / C / G

	Proposed Telephone / CATV Meter
	Proposed Gas Meter
	Proposed Telephone Pullbox (3'x5')
	Proposed Telephone Trench
	Proposed CATV Pullbox (2'x3')
	Proposed CATV Trench
	Proposed Gas Trench

LEGEND - ELECTRIC

	30 XFMR Slab Box (10'x12') w/ 5'x 8'-6" Box Working Clearances: 3' to sides, 8' to front and back
	PME-12 Switch (5'x10'-6"x7') Working Clearances: 4' to ends, 8' to front and back
	Capacitor Bank Pad (66"x72') Working Clearances: 3' to sides, 8' to front and back
	Slab Box (6'x8'-6") Working Clearances: 3' to sides, 8' to front and back
	PME -5 (6'x4') Clearances: 3' to sides, 8' to front and back
	Pullbox (2'-6"x4')
	Vault (7'x14'x8') w/ Proposed 6-way Gas Switch (Requires SCE Variance)
	4000A Main Panel (x6)
	Primary Conduit Route
	Service Cable Trench



Project Management Initials: CHK
 Date: 09/18/2018
 User: [redacted]
 File Name: [redacted]
 Approved: APR
 Recycled Content Paper

DISCUSSION DRAFT 9-18-2018

AECOM

PROJECT
PROJECT CONDOR,
INGLEWOOD CALIFORNIA



DEVELOPER

**MURPHY'S BOWL
LLC**
19400 HE 4TH ST, SUITE 3000
BELLEVUE, WA 98004

DEVELOPER'S MANAGING AGENT

WILSON MEANY
6701 Center Drive, Suite 550
Los Angeles, CA 90045
310.382.8001 tel
http://wilsonmeany.com/

**ARCHITECT / PLANNING /
ENGINEERING / TRANSPORTATION**

AECOM

AECOM TECHNICAL SERVICES, INC.
2350 McGee, Suite 200
Kansas City, MO 64108
816.561.4443 tel 816.991.2693 fax
www.aecom.com

CIVIL ENGINEER

**D&D
ENGINEERING, INC**
8901 S. La Compa Blvd, Suite 106
Inglewood, CA 90331
494.393.4122 tel

DRY UTILITY SYSTEMS

**BJ PALMER &
ASSOCIATES, INC**
23245 Grover Avenue
Valencia, CA 91355
760.842.7910 tel

PARKING

**WALKER
CONSULTANTS**
608 S. Olive St, Suite 1100
Los Angeles, CA 90014
213.458.4611 tel

SHORING ENGINEER

**DRS
ENGINEERING, INC**
3564 Sagunto Street, Suite 408
Santa Fe, CA 94060
916.452.3962 tel

REGISTRATION

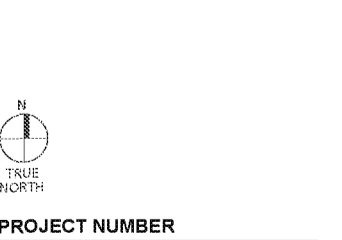
This drawing has been prepared for the use of AECOM's client and may not be used, reproduced or relied upon by third parties, except as agreed by AECOM and its client, as required by law or for use by governmental reviewing agencies. AECOM accepts no responsibility, and denies any liability whatsoever, to any party that modifies this drawing without AECOM's express written consent. Do not scale this document. All measurements must be obtained from the stated dimensions.

**NOT FOR
CONSTRUCTION**

ISSUE/REVISION

NO.	DATE	DESCRIPTION
1	SEP 14, 2018	DIR DOCUMENTS

KEY PLAN



PROJECT NUMBER

60545923

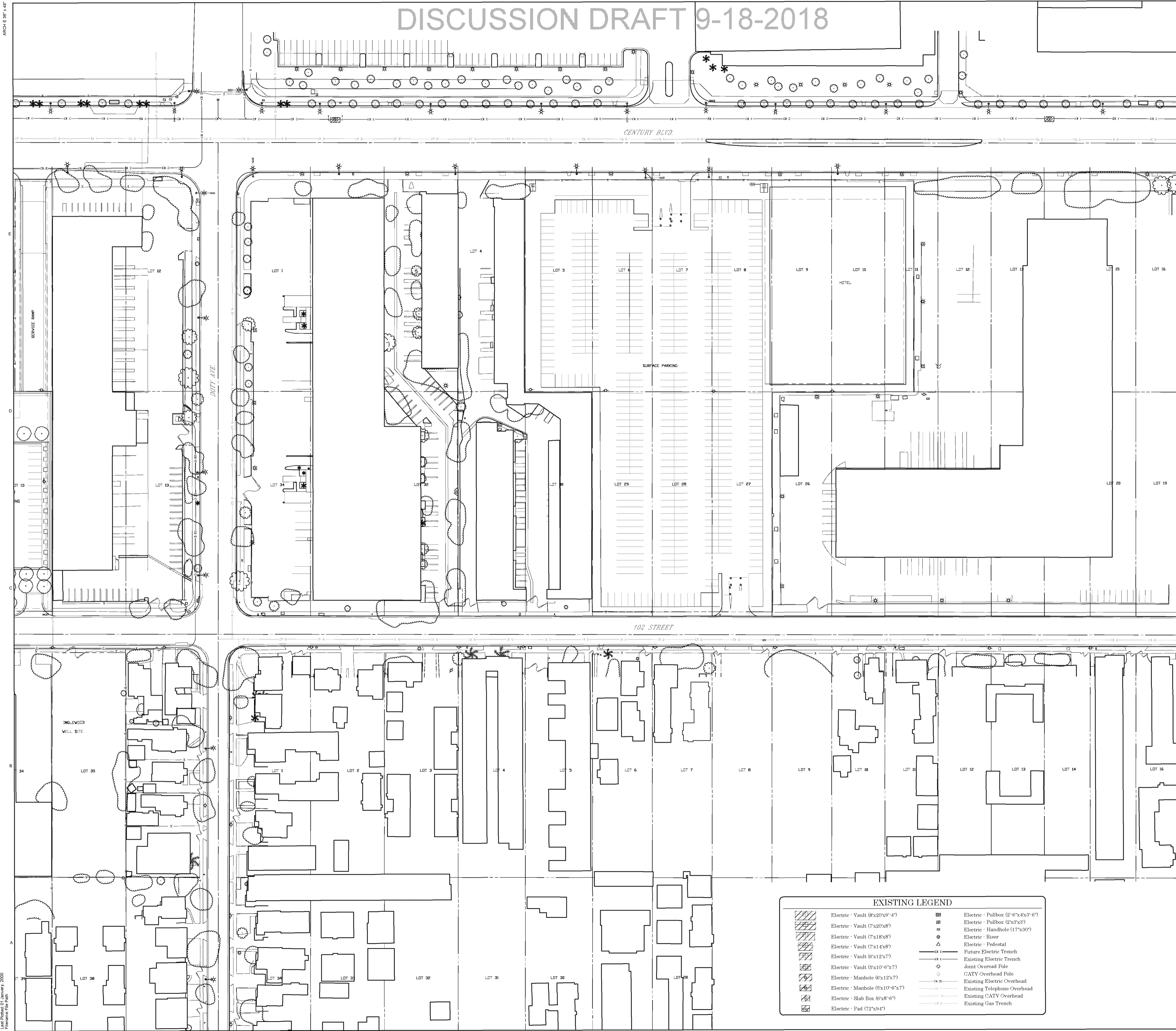
SHEET TITLE

PROPOSED DRY UTILITIES

SHEET NUMBER

CD-103A

© 2015 AECOM TECHNICAL SERVICES, INC.



EXISTING LEGEND

	Electric - Vault (8x20x9'-4")		Electric - Pullbox (2'-6"x4x3'-0")
	Electric - Vault (7x20x8')		Electric - Pullbox (2'x3'x3')
	Electric - Vault (7x18x8')		Electric - Handhole (17"x30")
	Electric - Vault (7x14x8')		Electric - Busbar
	Electric - Vault (6'x12x7')		Electric - Pedestal
	Electric - Vault (5'x10'-6"x7')		Future Electric Trench
	Electric - Manhole (6'x12x7')		Existing Electric Trench
	Electric - Manhole (5'x10'-6"x7')		Joint Overhead Pole
	Electric - Slab Box (6'x8'-6")		CATV Overhead Pole
	Electric - Pad (72"x9'4")		Existing Electric Overhead
			Existing Telephone Overhead
			Existing CATV Overhead
			Existing Gas Trench

Project Management Initials: Approved: AFR
 Designer: DSC Checked: CHK
 Filenamer: File Path

Printed on Recycled Paper