

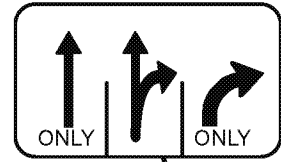
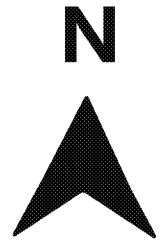


**LEGEND**

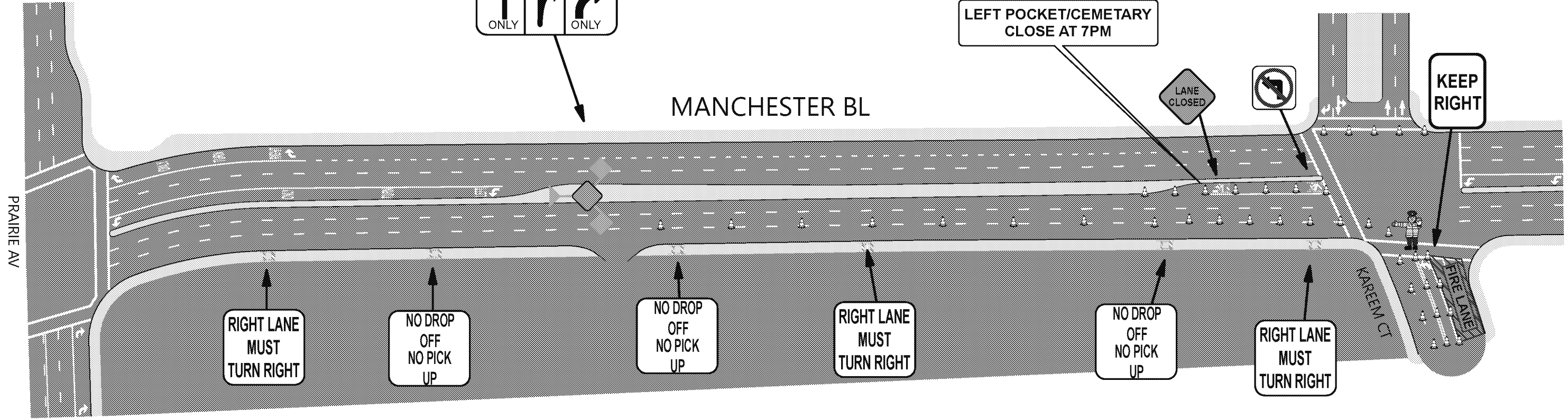
-  TRAFFIC CONE
-  TYPE II BARRICADE



LEFT POCKET/CEMETARY  
CLOSE AT 7PM



KEEP  
RIGHT



**A+ TRAFFIC  
MANAGEMENT, INC**  
OFFICE: (213) 747-0215

<b>FORUM TCP B (6,000 - 14,000)</b>	
SCALE:	DRAWN BY: S.F
DATE:	REVISED:
<b>MANCHESTER BL INBOUND</b>	
© A+ TRAFFIC MANAGEMENT INC, 2018 - 2019. ALL RIGHTS RESERVED	SHEET NO: <b>5 OF 15</b>

**GENERAL NOTE:**  
ALL SIGNS, STRIPES, DELINEATORS, BARRICADES AND OTHER TRAFFIC CONTROL DEVICES AND THEIR INSTALLATION SHALL CONFORM TO THE LATEST EDITIONS OF THE FOLLOWING DOCUMENTS: THE STATE OF CALIFORNIA STANDARD SPECIFICATIONS, AND THE CALIFORNIA MANUAL ON UNIFORM TRAFFIC CONTROL DEVICES. IN THE EVENT OF CONFLICT BETWEEN THESE TWO DOCUMENTS, THE MOST STRINGENT REQUIREMENT SHALL APPLY. SIGN SIZES SHALL BE THOSE SHOWN AS "STANDARD", OR LARGER, IN THE CALIFORNIA MANUAL ON UNIFORM TRAFFIC CONTROL DEVICES.