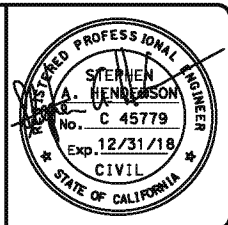
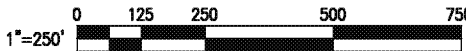



4 Revised per Addendum No. 4  
Date: April 16, 2018



REVISIONS		
MARK	DATE	DESCRIPTION
4	10-16-18	Revised per Addendum No. 4

 <b>CITY OF INGLEWOOD, CALIFORNIA PUBLIC WORKS DEPARTMENT</b>		
PROJECT TITLE: <b>PLANS FOR IMPROVEMENT OF CENTURY BOULEVARD INGLEWOOD AVE TO DOTY AVE TRAFFIC SIGNAL KEY PLAN</b>		
PLAN SCALE: 1"=500'	PROFILE SCALE: VERTICAL HORIZONTAL	
DESIGNED BY: DRAWN BY: CHECKED BY:	SUBMITTED BY / APPROVED BY:  PETER PUGLIESE, RCE 81418 / CITY TRAFFIC ENGINEER DATE: <b>3/1/2018</b>	PLAN NO. <b>TS-300</b> SHEET NO. OF

GENERAL NOTES

- ALL WORK, MATERIALS AND EQUIPMENT SHALL BE FURNISHED BY THE CONTRACTOR AND SHALL CONFORM TO CALTRANS 2010 STANDARD PLANS, AND STANDARD SPECIFICATIONS, AND 2014 CALIFORNIA MANUAL OF UNIFORM TRAFFIC CONTROL DEVICES (MUTCD).
- THE CONTRACTOR SHALL OBTAIN ALL NECESSARY PERMITS AND NOTIFY ALL AFFECTED UTILITY COMPANIES AND AGENCIES AT LEAST 72 HOURS IN ADVANCE OF CONSTRUCTION.
- POLE, DETECTOR AND EQUIPMENT LOCATIONS ARE APPROXIMATE. THE ENGINEER SHALL APPROVE THE EXACT LOCATIONS OF ALL EQUIPMENT PLACEMENT IN THE FIELD PRIOR TO INSTALLATION. ATTENTION IS DIRECTED TO THE WARNING NOTE ON SHEET TS-301C. IF THE DESIGNATED LOCATION OF ANY TRAFFIC SIGNAL ITEM IS FOUND TO INCUR INTERFERENCE OF UNDERGROUND UTILITIES OR SUBSTRUCTURES, THE CONTRACTOR SHALL IMMEDIATELY NOTIFY THE ENGINEER, WHO SHALL DETERMINE THE APPROPRIATE ACTION PRIOR TO INSTALLATION.
- ALL VEHICLE INDICATIONS SHALL BE 12" DIAMETER WITH METAL BACK PLATE AND METAL VISOR. SIGNAL SECTION HOUSING SHALL BE METAL. VEHICLE INDICATIONS SHALL BE (RED, YELLOW AND GREEN) AND SHALL UTILIZE LIGHT EMITTING DIODE (LED) SIGNAL MODULES. PEDESTRIAN INDICATIONS SHALL UTILIZE INTERNATIONAL SYMBOL AND UTILIZE LED COUNT DOWN MODULES. PEDESTRIAN BUSH BUTTONS SHALL BE TYPE "B" ADA TYPE WITH INTERNATIONAL SYMBOL PLATE.
- ALL PULL BOXES SHALL BE NO. 5, UNLESS OTHERWISE NOTED, AND HAVE A MAXIMUM SPACING OF 200' BETWEEN PULL BOXES. PULL BOX COVERS SHALL BE FIBERLYTE. COVERS SHALL HAVE THE MARKING "TRAFFIC SIGNAL." PULL BOX ADJACENT TO THE CONTROLLER CABINET SHALL BE TYPE 6E. PULL BOXES WITH 4 OR MORE CONDUITS SHALL BE TYPE 6E.
- FLASHING SIGNAL OPERATION SHALL BE RED ON ALL PHASES.
- FOR TRAFFIC SIGNAL INTERCONNECT SEE FIBER OPTIC PLANS (PLAN NUMBERS FO-301 THROUGH FO-306).
- TRAFFIC SIGNAL INTERCONNECT SHALL BE INSTALLED WITH 6 PAIR 19 SIGNAL INTERCONNECT CABLE, IN A COMMON TRENCH. REFER TO ELECTRICAL PLANS.
- NOT USED.
- INSTALL #8 GROUND CONDUCTOR IN ALL NEW INSTALLED CONDUITS CONTAINING POWER CONDUCTORS AND A #10 GROUND CONDUCTOR IF CONDUIT CONTAINS NO POWER CONDUCTORS.
- NOT USED.
- CONDUCTOR SCHEDULE IS FURNISHED AS AN INSTALLATION GUIDELINE ONLY. IT SHALL BE THE CONTRACTOR'S RESPONSIBILITY TO PROVIDE THE CORRECT CABLES AND CONDUCTORS REQUIRED FOR THE INTENDED OPERATION.
- SERVICE EQUIPMENT ENCLOSURE SHALL BE 10' TO 15' FROM THE CONTROLLER, AND SEPARATED FROM ALL UTILITY POLES BY A MINIMUM OF 15 FEET, UNLESS OTHERWISE DIRECTED BY THE ENGINEER. REFER TO DETAIL "H" ON PLAN NO. TS-301A
- ALL NEW INSTALLED 1-A POLE FOUNDATIONS SHALL HAVE ANCHOR BOLTS WITH SLEEVE NUTS PER CALTRANS STD. PLAN ES-7B.
- UNDERGROUND SIGNAL CONDUCTORS SHALL NOT BE SPLICED.
- THE CONTRACTOR SHALL BE RESPONSIBLE FOR PROVIDING A DETAILED TRAFFIC CONTROL PLAN FOR ANY STREET AND DRIVEWAY CLOSURES ASSOCIATED WITH THE TRAFFIC SIGNAL CONSTRUCTION AND SHALL PROVIDE ALL NECESSARY TRAFFIC CONTROL DEVICES DURING THE SIGNAL INSTALLATION, IN ACCORDANCE WITH THE 2014 CALIFORNIA MANUAL OF TRAFFIC CONTROL DEVICES (MUTCD).
- FOR STRIPING DETAILS SEE STRIPING AND SIGNING PLANS (PLAN NUMBERS SPD-301 THROUGH SPD-311).
- ALL SIGN PANELS SHALL CONFORM TO THE CALTRANS SIGN AND SPECIFICATION SHEETS AND SHALL BE MOUNTED ON POST AT 7' HEIGHT FROM GROUND.
- THE EXACT LOCATION OF ALL SIGNS AND PAVEMENT MARKINGS SHALL BE DETERMINED BY THE ENGINEER IN THE FIELD.
- ALL TRAFFIC SIGNS SHALL BE INSTALLED PRIOR TO TRAFFIC SIGNAL TURN ON.
- ALL PAVEMENT DELINEATION REQUIREMENTS SHALL BE COMPLETED AT LEAST ONE DAY PRIOR TO TRAFFIC SIGNAL TURN ON.
- CONDUIT BETWEEN ADJOINING PULL BOXES SHALL BE 3" UNLESS SHOWN OTHERWISE.
- VIDEO VEHICLE DETECTORS SHALL BE CENTERED WITHIN THE LANE AND SHALL BE 6 FEET IN WIDTH.
- PULL BOXES SHALL NOT BE LOCATED IN OR WITHIN 12" OF ANY CURB ACCESS RAMP OR DRIVEWAY.
- THE CONTRACTOR SHALL VERIFY WITH THE ENGINEER THE PRECISE FIELD LOCATIONS OF ALL TRAFFIC SIGNAL EQUIPMENT PRIOR TO THE INSTALLATION.
- ALL LANDSCAPING WHICH IS DAMAGED BY CONSTRUCTION ACTIVITIES SHALL BE REPAIRED OR REPLACED TO THE SATISFACTION OF THE CITY.
- NEW MAST ARM MOUNTED REGULATORY SIGNS SHALL BE FABRICATED WITH ASTM TYPE II REFLECTIVE SHEETING OR APPROVED EQUAL.
- STREET NAME SIGNS (SNS) SHALL BE REFLECTORIZED PER SPECIFICATIONS. STREET NAME LEGENDS SHALL BE UPPER/LOWER CASE. SUBMIT FULL SIZE COLOR SAMPLE TO THE CITY TRAFFIC ENGINEER FOR APPROVAL PRIOR TO SIGN FABRICATION.
- CONTRACTOR SHALL COORDINATE WITH THE CITY OF INGLEWOOD TRAFFIC SIGNAL MAINTENANCE DEPARTMENT FIVE (5) WORKING DAYS PRIOR TO WORK AFFECTING A TRAFFIC SIGNAL.

GENERAL NOTES CONTINUED

- PEDESTRIAN PUSH BUTTONS SHALL BE ADA COMPLIANT AND VIBRO TACTILE. PUSH BUTTONS SHALL BE POLARA BULLDOG (OR EQUAL) CONSTRUCTED OF HIGH DENSITY THERMOPLASTIC AND UTILIZE PIEZO SWITCH TECHNOLOGY. PUSH BUTTON COLOR SHALL BE YELLOW. OUTER BODY COLOR SHALL BE BLACK. POLARA \*MPBP-BY OR CAMPBELL CO. DCC 700P OR EQUAL. SCREWS USED TO SECURE THE SIGN PLATE TO THE HOUSING SHALL BE STAINLESS STEEL 8-32" X 3/8" WITH TAMPER PROOF TORX HEAD. SIZE T-15, OR A CITY APPROVED EQUAL. SUBMIT SAMPLE TO THE CITY TRAFFIC ENGINEER FOR APPROVAL PRIOR TO ORDERING PUSH BUTTON SYSTEMS.
- THE CONTRACTOR SHALL OBTAIN ALL NECESSARY PERMITS AND SHALL NOTIFY ALL AFFECTED AGENCIES AND COMPANIES, INCLUDING THE CITY OF INGLEWOOD, TRAFFIC SIGNAL MAINTENANCE DIVISION, 48 HOURS PRIOR TO START OF CONSTRUCTION.
- EXISTING TRAFFIC SIGNAL HEADS AND POLES SHALL BE REMOVED, INCLUDING ENTIRE POLE FOUNDATIONS (BACKFILLED WITH NATIVE MATERIAL TO 95% RELATIVE COMPACTION) UNLESS NOTED OTHERWISE.
- EXISTING TRAFFIC SIGNAL CONTROLLER CABINETS THAT ARE TO REMAIN IN PLACE AND REUSED, SHALL BE PROTECTED IN PLACE.
- ALL EXISTING CONDUITS NOT SHOWN FOR REUSE SHALL BE ABANDONED.
- ALL EXISTING PULLBOXES NOT SHOWN FOR REUSE SHALL BE REMOVED AND BECOME THE PROPERTY OF THE CONTRACTOR

ABBREVIATIONS

APS	ACCESSIBLE PEDESTRIAN SIGNAL
BBS	BATTERY BACKUP SYSTEM (NEW PIGGY BACK)
EVP	EMERGENCY VEHICLE PREEMPTION DETECTOR
SP	NEW SERVICE, DUAL METER PEDESTAL
SL	STREET LIGHTING
TS	TRAFFIC SIGNAL
PEU	PHOTO ELECTRIC UNIT

STANDARD NOTES

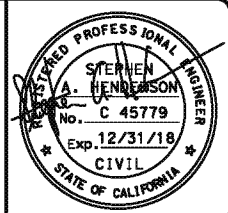
AB	ABANDON. IF APPLIED TO CONDUIT, REMOVE CONDUCTORS.
BC	INSTALL PULL BOX IN EXISTING CONDUIT RUN.
CB	INSTALL CONDUIT INTO EXISTING PULL BOX.
CC	CONNECT NEW AND EXISTING CONDUIT. REMOVE EXISTING CONDUCTORS AND INSTALL CONDUCTORS AS INDICATED.
PP	PROTECT IN PLACE
RC	EQUIPMENT OR MATERIAL TO BE REMOVED AND BECOME THE PROPERTY OF THE CONTRACTOR.
RL	RELOCATE EQUIPMENT.
RS	REMOVE AND SALVAGE EQUIPMENT.

LEGEND

	EXISTING SERVICE PEDESTAL		EXISTING UTILITY
	PROPOSED SERVICE PEDESTAL		PROPOSED UTILITY
	EXISTING CCTV CAMERA		PROPOSED FIBER OPTIC
	PROPOSED CCTV CAMERA		EXISTING FIBER OPTIC
	PROPOSED 3M OPTICOM DETECTOR		EXISTING RIGHT-OF-WAY
	PROPOSED VIDEO VEHICLE DETECTION AREA		PROPOSED RIGHT-OF-WAY
	EXISTING VIDEO VEHICLE DETECTION AREA		

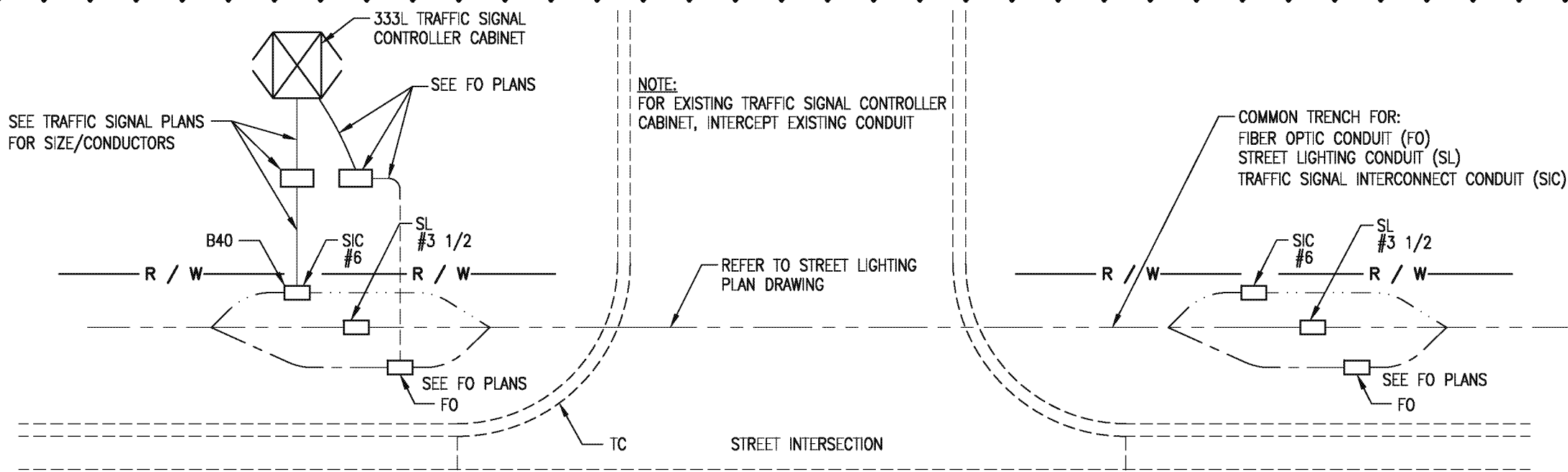
4 Revised per Addendum No. 4  
Date: April 16, 2018

CITY OF INGLEWOOD MAINTAINED  
PERCENTAGE SHARE  
100% CITY OF INGLEWOOD



REVISIONS		
MARK	DATE	DESCRIPTION
4	10-16-18	Revised per Addendum No. 4

	<b>CITY OF INGLEWOOD, CALIFORNIA PUBLIC WORKS DEPARTMENT</b>	
PLAN SCALE: NTS	PROJECT TITLE: <b>PLANS FOR IMPROVEMENT OF CENTURY BOULEVARD INGLEWOOD AVE TO DOTY AVE TRAFFIC SIGNAL PLANS - GENERAL NOTES &amp; LEGEND</b>	PROFILE SCALE: VERTICAL HORIZONTAL
DESIGNED BY: DRAWN BY: CHECKED BY:	SUBMITTED BY / APPROVED BY:  PETER PUGLIESE, RCE #1419 / CITY TRAFFIC ENGINEER 3/1/2018 DATE	PLAN NO. TS-301 SHEET NO. 2 OF 17



ELECTRICAL COMMON TRENCH LAYOUT SCHEMATIC  
WITH TRAFFIC SIGNAL INTERCONNECT (SIC), STREET LIGHTING (SL) & FIBER OPTIC (FO) PULLBOX ARRANGEMENT

**DETAIL "A"**  
NOT TO SCALE

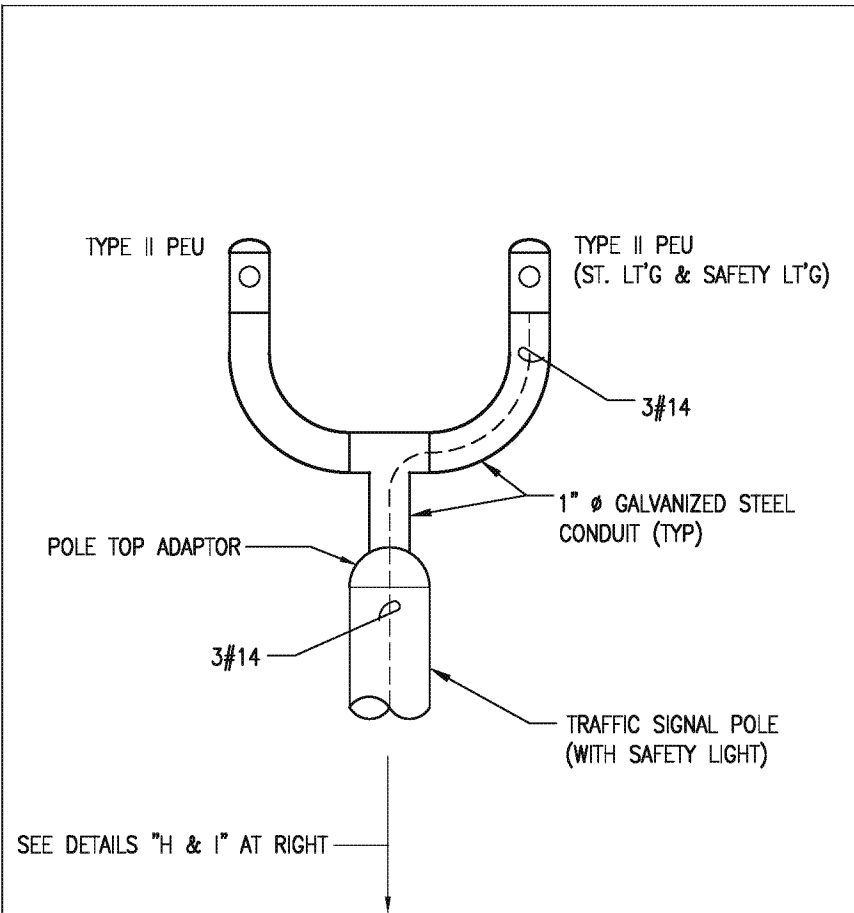
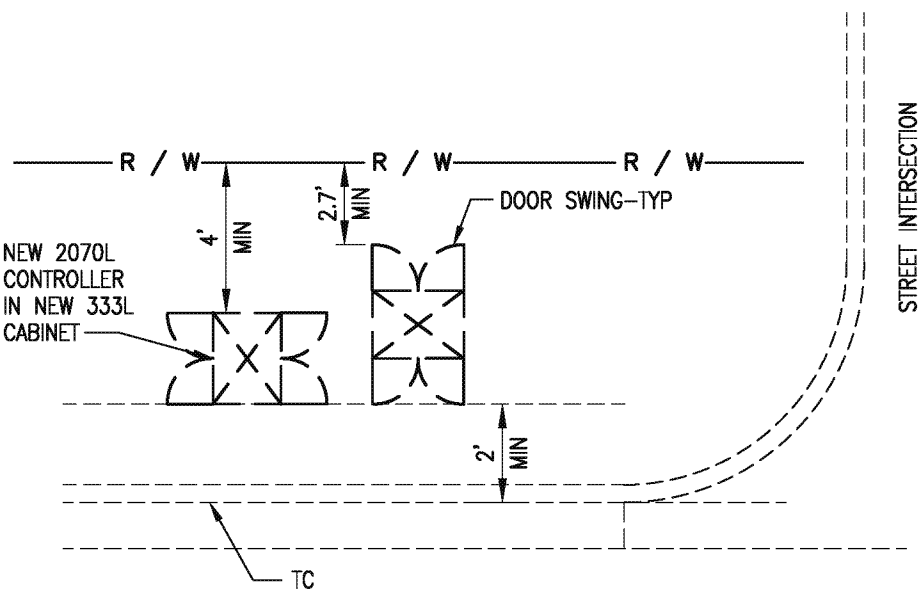


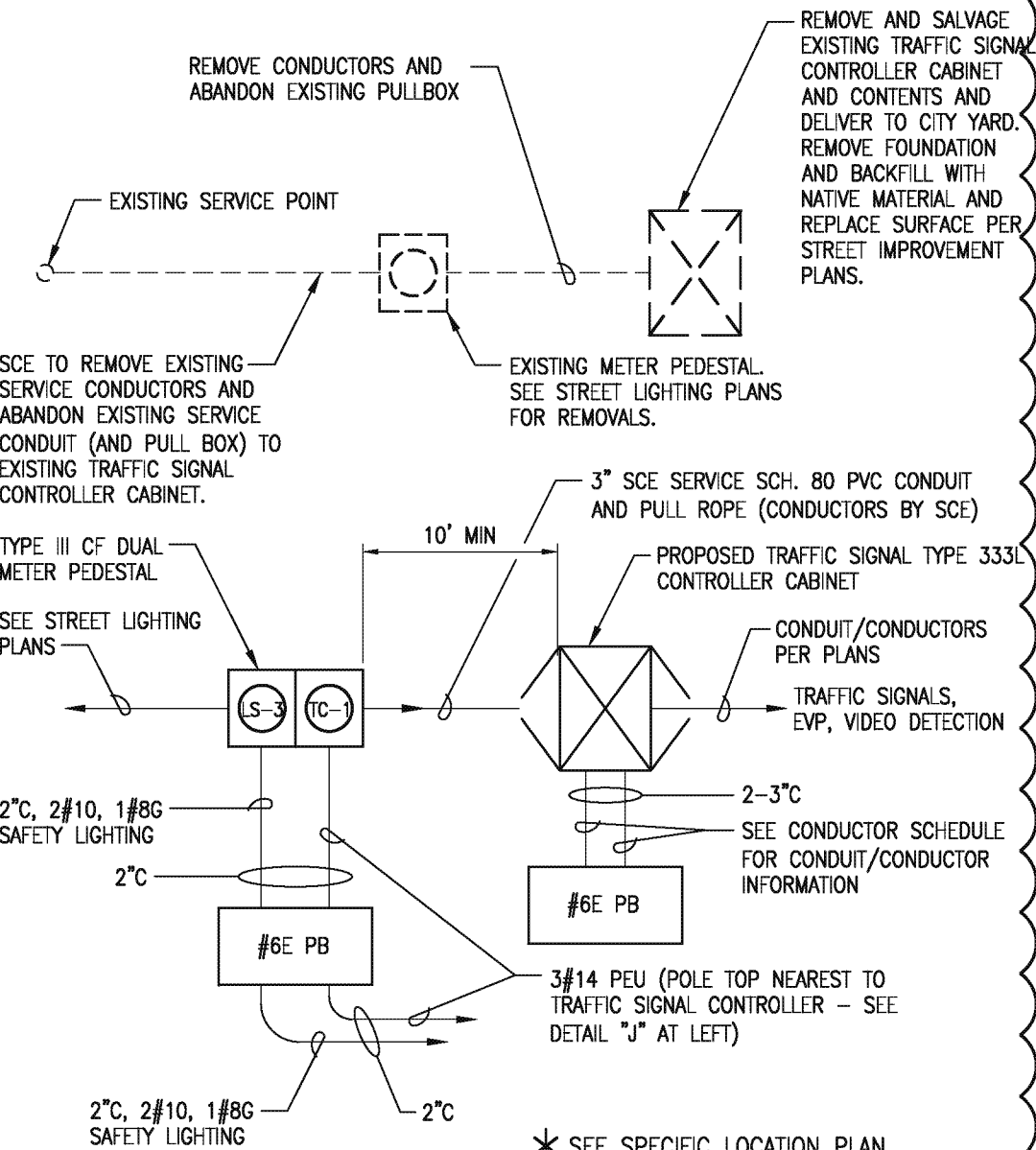
PHOTO ELECTRIC CONTROL

**DETAIL "B"**  
NOT TO SCALE



TYPICAL 333L CONTROLLER CABINET INSTALLATION

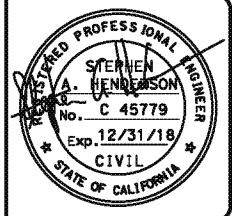
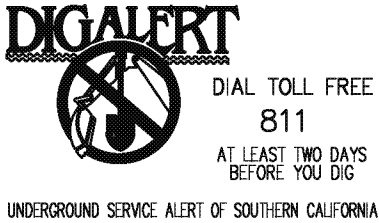
**DETAIL "C"**  
NOT TO SCALE




TYPICAL ELECTRICAL SERVICE LAYOUT SCHEMATIC FOR NEW  
SAFETY / STREET LIGHTING AND NEW TRAFFIC SIGNAL CONTROLLER CABINET

**DETAIL "D"**  
NOT TO SCALE

Revised per Addendum No. 4  
Date: April 16, 2018




REVISIONS		
MARK	DATE	DESCRIPTION
4	10-16-18	Revised per Addendum No. 4



**CITY OF INGLEWOOD, CALIFORNIA**  
**PUBLIC WORKS DEPARTMENT**

PROJECT TITLE:  
**PLANS FOR IMPROVEMENT OF  
CENTURY BOULEVARD  
INGLEWOOD AVE TO DOTY AVE**  
TRAFFIC SIGNAL PLANS - GENERAL NOTES & DETAILS

DESIGNED BY: \_\_\_\_\_  
DRAWN BY: \_\_\_\_\_  
CHECKED BY: \_\_\_\_\_

SUBMITTED BY / APPROVED BY:  
  
PETER PUGLIESE, RCE #1419 / CITY TRAFFIC ENGINEER

DATE: **3/1/2018**

PLAN SCALE:  
NTS

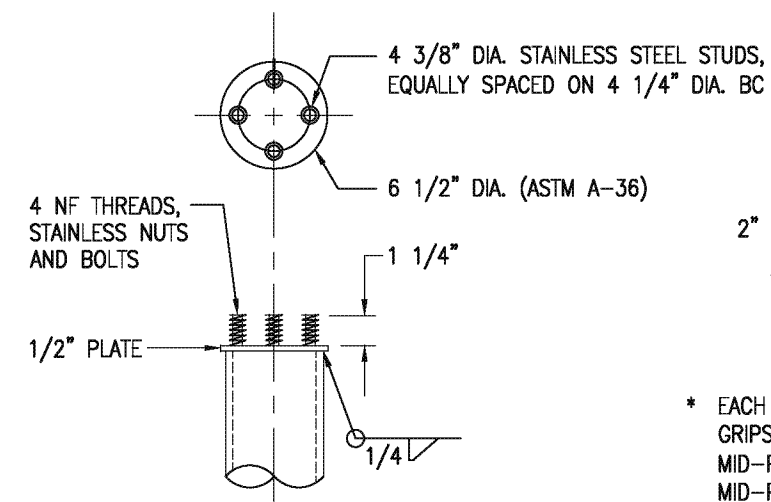
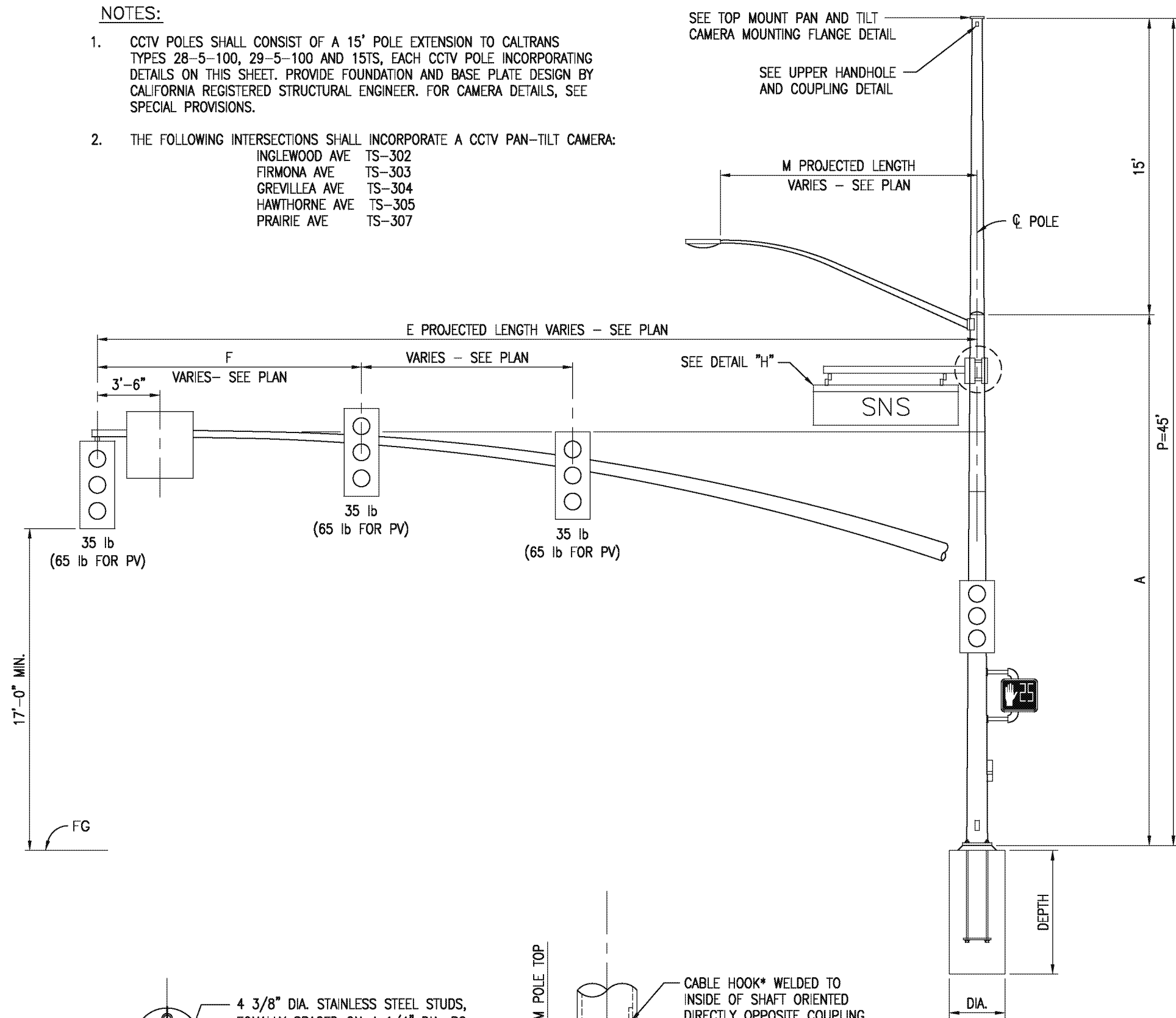
PROFILE SCALE:  
VERTICAL  
HORIZONTAL

PLAN NO.  
**TS-301A**  
SHEET NO.  
1 OF 17

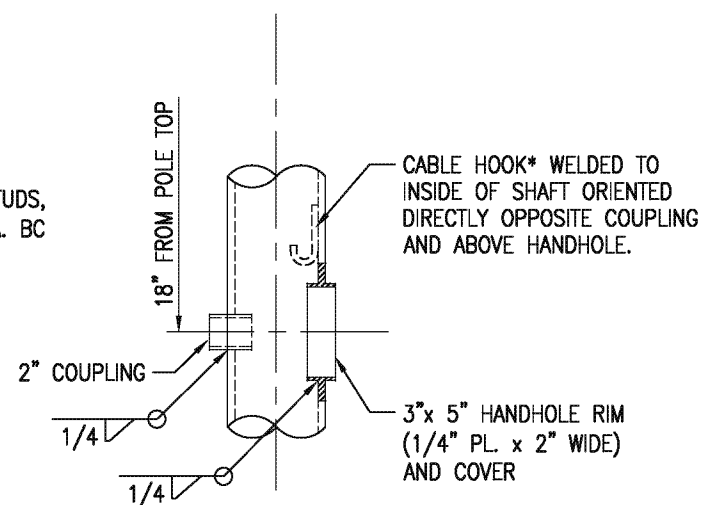
**NOTES:**

- CCTV POLES SHALL CONSIST OF A 15' POLE EXTENSION TO CALTRANS TYPES 28-5-100, 29-5-100 AND 15TS, EACH CCTV POLE INCORPORATING DETAILS ON THIS SHEET. PROVIDE FOUNDATION AND BASE PLATE DESIGN BY CALIFORNIA REGISTERED STRUCTURAL ENGINEER. FOR CAMERA DETAILS, SEE SPECIAL PROVISIONS.
- THE FOLLOWING INTERSECTIONS SHALL INCORPORATE A CCTV PAN-TILT CAMERA:
 

INGLEWOOD AVE	TS-302
FIRMONA AVE	TS-303
GREVILLEA AVE	TS-304
HAWTHORNE AVE	TS-305
PRAIRIE AVE	TS-307



PAN AND TILT  
MOUNTING FLANGE DETAIL

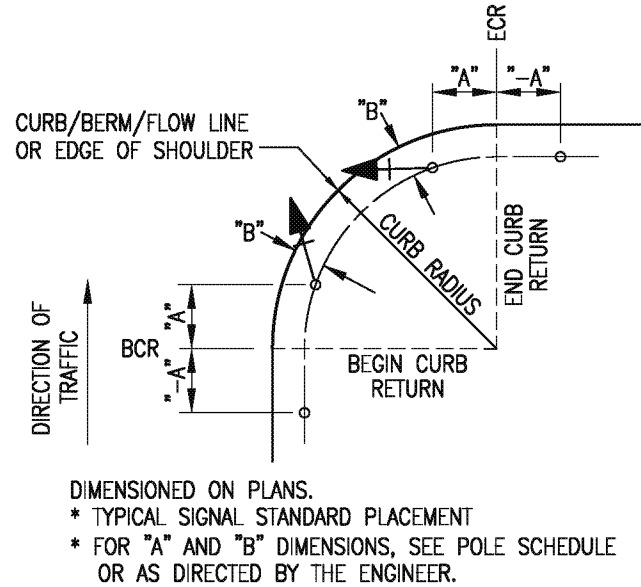


UPPER HANDHOLE  
AND COUPLING DETAIL

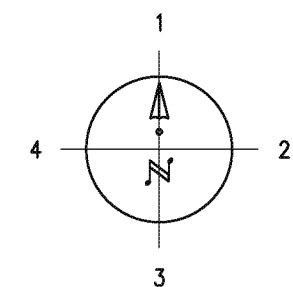
\* EACH CABLE SHALL BE SUPPORTED INSIDE THE POLE BY KELLIMS GRIPS (OR EQUIVALENT) ONE AT TOP AND A SECOND AT THE MID-POINT. TWO 1/8" DIA. GALVANIZED STEEL WIRES SHALL SECURE MID-POINT GRIPS TO THE TOP CABLE HOOK.

TYPE 29-5-100 CCTV POLE (LADOT TYPE)  
REFER TO LADOT DRAWING NO. S-52.1.4B FOR DETAILS,  
TYPE C-2-100 POLE

DETAIL "E"  
NOT TO SCALE

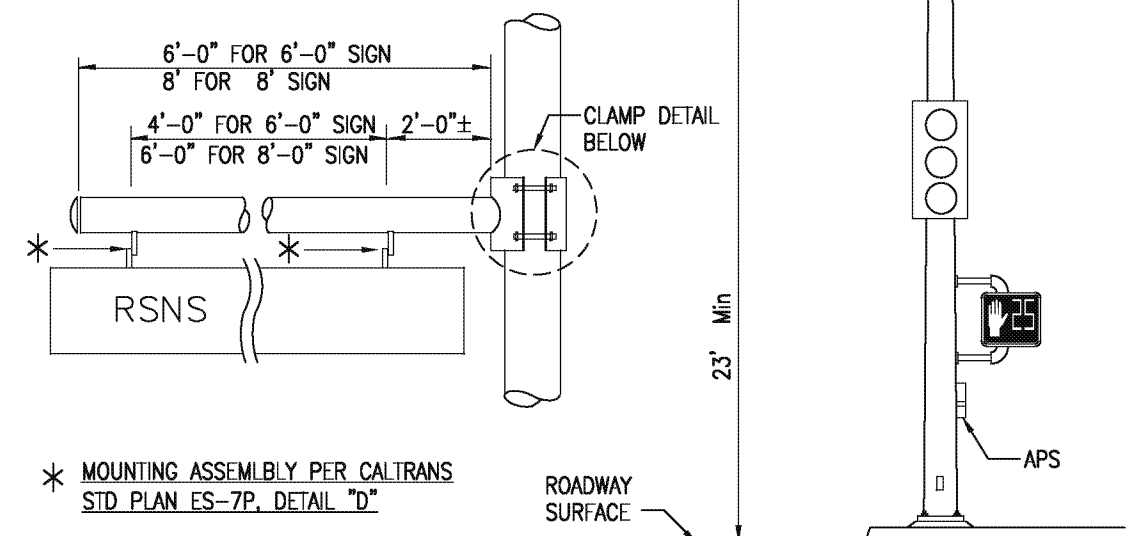


DETAIL "F"  
NOT TO SCALE

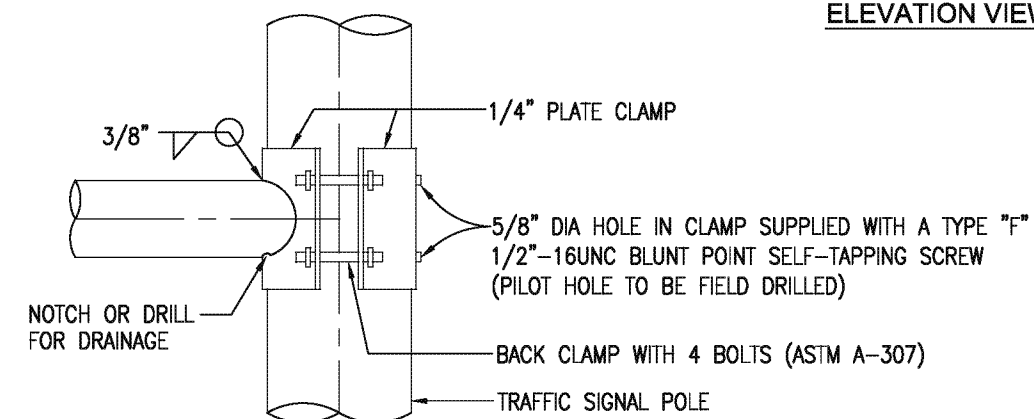


PUSH BUTTON LOCATION

DETAIL "G"  
NOT TO SCALE



ELEVATION VIEW



CLAMP DETAIL

TYPICAL STREET NAME SIGN MAST  
ARM & MOUNTING FOR TYPE 15 TS

DETAIL "H"  
NOT TO SCALE

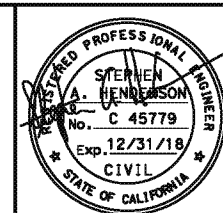
**WARNING:**

UTILITY LINES SHOWN ARE BASED UPON A SEARCH OF AVAILABLE RECORDS. THERE IS NO ASSURANCE THAT THE LOCATION OF SUBSTRUCTURES SHOWN ARE ACCURATE. PRIOR TO ANY EXCAVATION WORK, THE CONTRACTOR SHALL NOTIFY UNDERGROUND SERVICE ALERT OF SOUTHERN CALIFORNIA (DIGALERT) TO MARK THE LOCATION OF ALL SUBSTRUCTURES, WHETHER SHOWN OR NOT ON THESE DRAWINGS, AT LEAST 48 HOURS PRIOR TO THE COMMENCEMENT OF FIELD MARKING. THE CONTRACTOR SHALL USE PRECAUTION WHEN EXCAVATING. SUBSTRUCTURES ENCOUNTERED SHALL BE EXPOSED AND THE ENGINEER NOTIFIED OF THEIR EXISTENCE. THE CONTRACTOR SHALL BE RESPONSIBLE FOR THE PROTECTION OF ALL SUBSTRUCTURES, WHETHER SHOWN OR NOT, ON THESE DRAWINGS. THE CONTRACTOR SHALL REPAIR, AT OWN EXPENSE, ANY SUBSTRUCTURES DAMAGE CAUSED BY HIS/HER OPERATIONS. IF UTILITY REPAIRS, INCLUDING REALIGNMENT, ARE MADE BY THE UTILITY OWNER, THE CONTRACTOR SHALL BE RESPONSIBLE FOR ALL ASSOCIATED COSTS.



UNDERGROUND SERVICE ALERT OF SOUTHERN CALIFORNIA

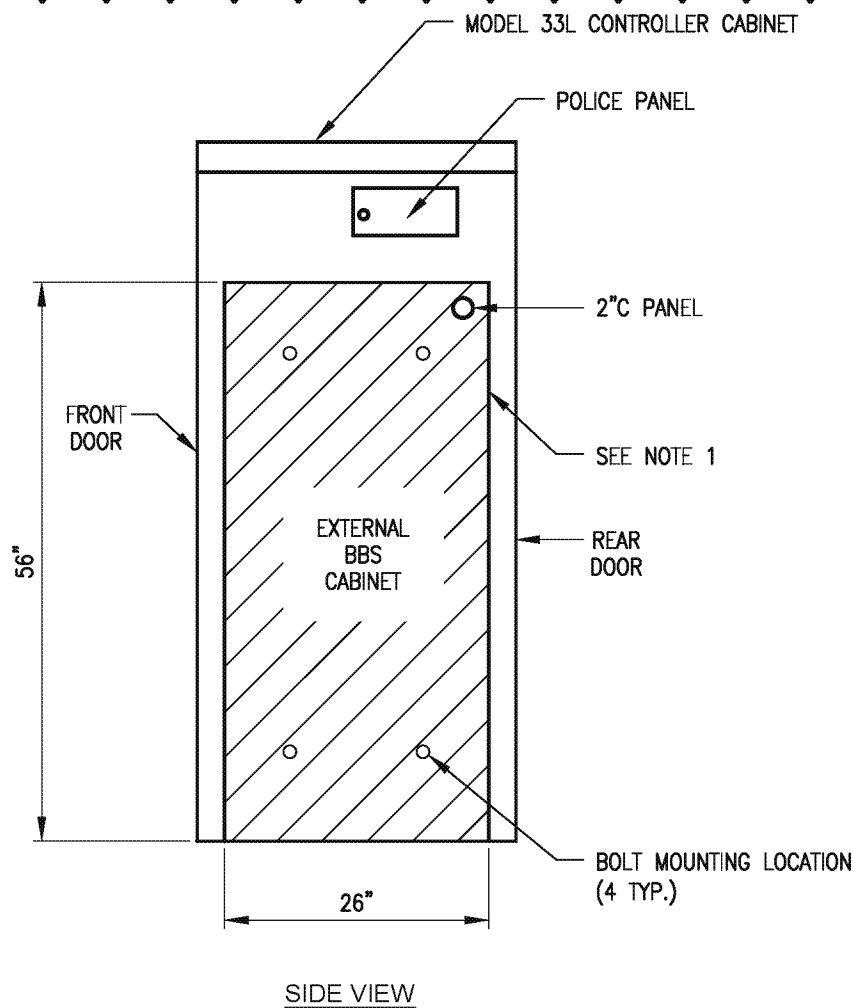
DIAL TOLL FREE  
811  
AT LEAST TWO DAYS  
BEFORE YOU DIG



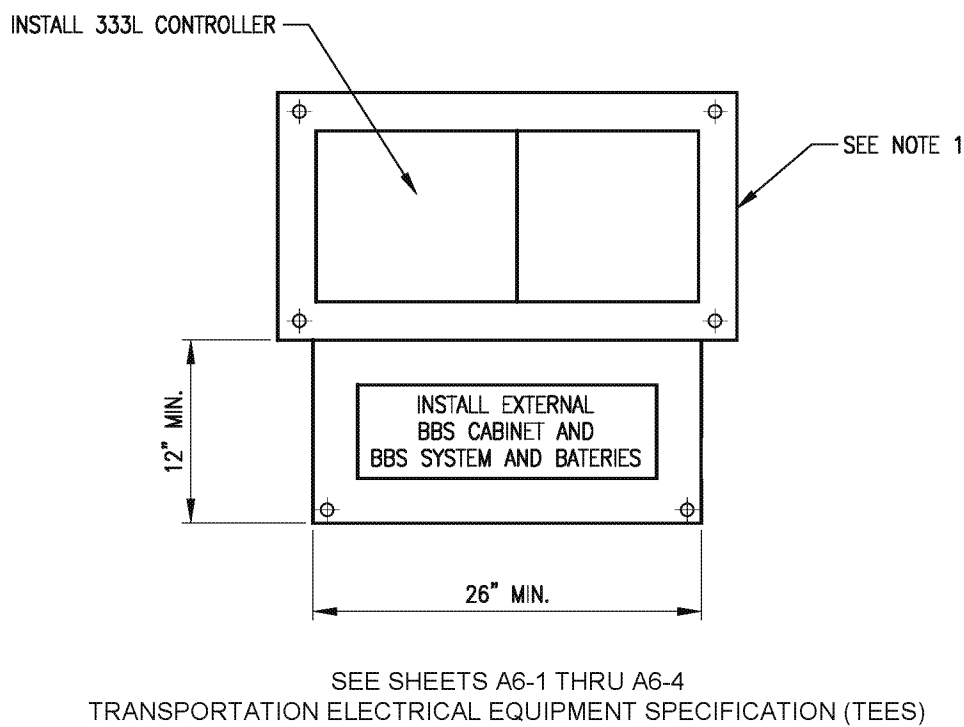
REVISIONS		
MARK	DATE	DESCRIPTION
4	10-16-18	Revised per Addendum No. 4

		<b>CITY OF INGLEWOOD, CALIFORNIA</b> <b>PUBLIC WORKS DEPARTMENT</b>		
PROJECT TITLE: <b>PLANS FOR IMPROVEMENT OF CENTURY BOULEVARD INGLEWOOD AVE TO DOTY AVE</b> DETAIL PLAN				
PLAN SCALE: 1"=20'	DESIGNED BY: DRAWN BY: CHECKED BY:	SUBMITTED BY / APPROVED BY:  PETER PUGLIESE, RCE 81419 / CITY TRAFFIC ENGINEER	3/1/2018 DATE	PLAN NO. TS-301B SHEET NO. OF

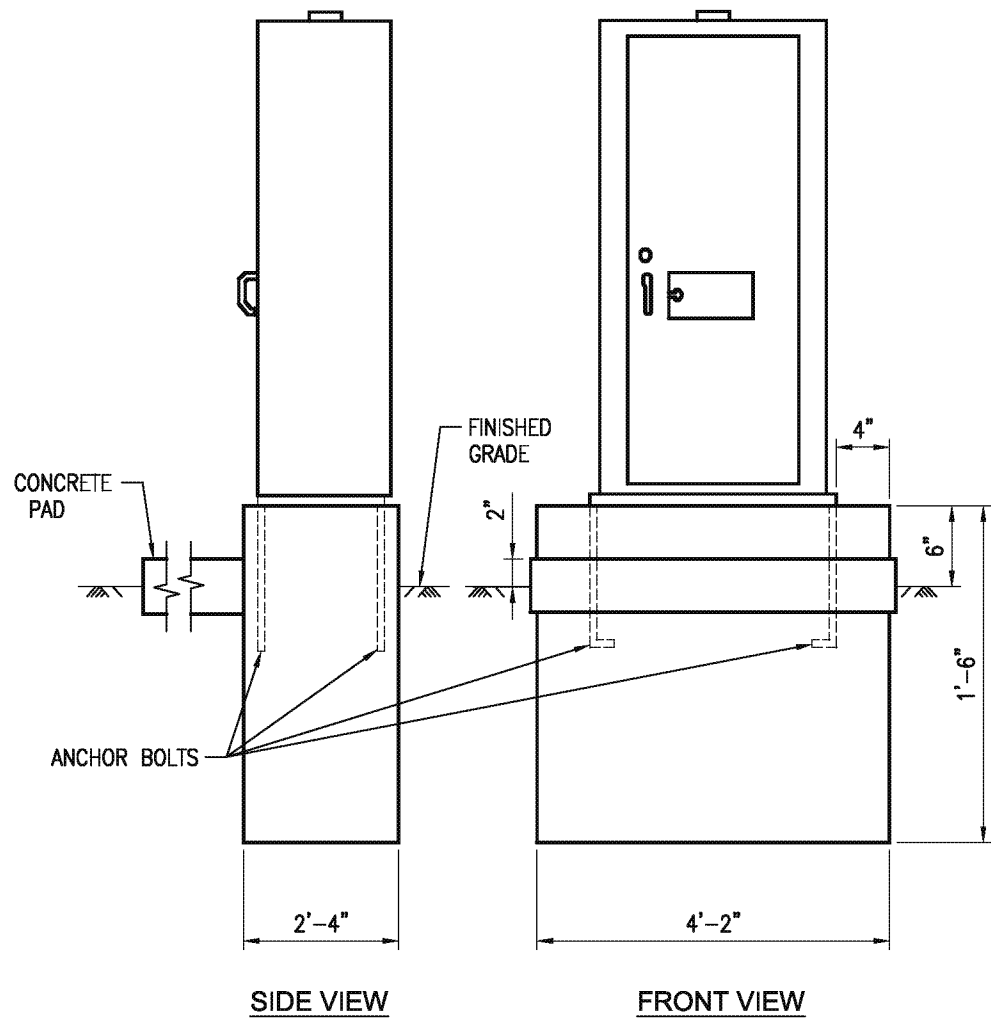
Revised per Addendum No. 4  
Date: April 16, 2018



**EXTERNAL BBS CABINET  
MOUNTED TO THE 333L CABINET**  
NOT TO SCALE



**BASE PLAN FOR BBS MOUNTED  
TO THE MODEL 333L CABINET**  
NOT TO SCALE

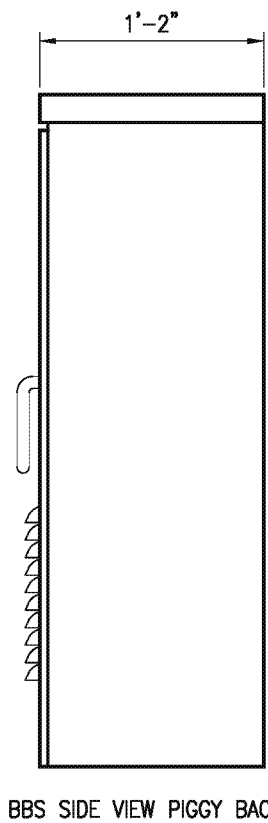


- NOTES:**
1. A 1" DRAIN SHALL BE PROVIDED THROUGH THE FOUNDATION
  2. CABINET SHELVES SHALL BE ADJUSTABLE FOR VERTICAL SPACING AND SHALL BE REMOVABLE. CABINETS SHALL BE PROVIDED WITH A MINIMUM OF TWO SHELVES.
  3. CONTROLLER UNITS, PLUG MOUNTED EQUIPMENT, SHELF-MOUNTED EQUIPMENT AND WALL MOUNTED EQUIPMENT SHALL BE LOCATED TO PERMIT SAFE AND EASY REMOVAL OR REPLACEMENT WITHOUT REMOVING ANY OTHER PIECE OF EQUIPMENT.
  4. ANCHOR BOLTS SHALL BE 3/4" DIA. X 1'-6" WITH A 2"-90° BEND.
  5. REFER TO CALTRANS STD. PLAN RSP ES-3B FOR TYPE R CABINET AND DETAILS NOT SHOWN.

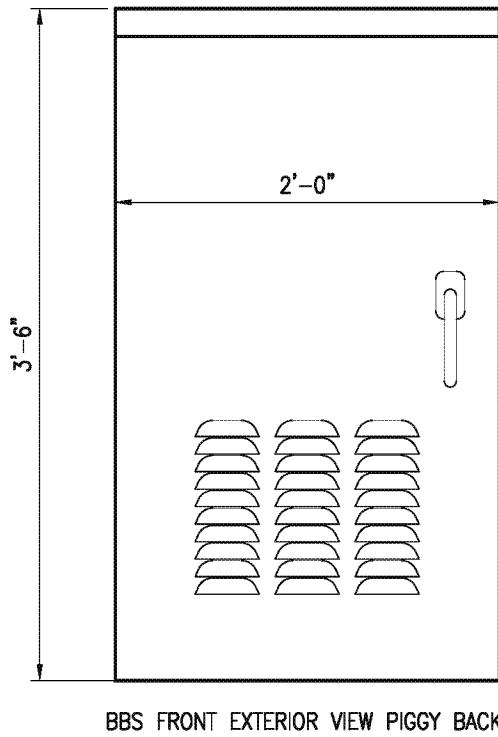
**TYPE 333L CONTROLLER CABINET FOUNDATION**

**NOTES: (THIS SHEET ONLY)**

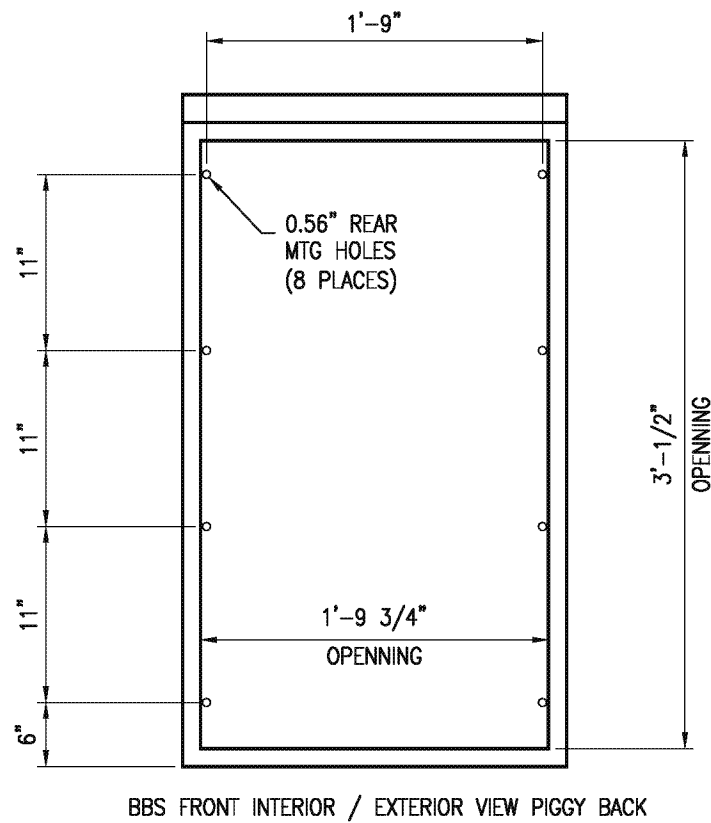
1. THE EXTERNAL BBS CABINET SHALL BE MOUNTED TO THE MODEL 333L CABINET WITH FOUR 18-8 STAINLESS STEEL HEX HEAD, FULLY-THREADED, 3/8"-16 X 1" BOLTS; TWO WASHERS PER BOLT, DESIGNED FOR 3/8" BOLTS AND ARE 18-8 STAINLESS STEEL, 1" OUTSIDE DIAMETER, ROUND, AND FLAT; AND ONE K-LOCK NUT PER BOLT THAT IS 18-8 STAINLESS STEEL AND A HEX-NUT. THE ENGINEER WILL HAVE TO APPROVE THE BOLT MOUNTING LOCATION PRIOR TO INSTALLATION.
2. THE ANCHOR BOLTS SHALL BE 3/4" DIA. X 15" WITH A 2"-90° BEND. THE CABINET MANUFACTURE'S SPECIFICATION SHALL DETERMINE THE LOCATION OF THE ANCHOR BOLTS IN THE FOUNDATION. THE ENGINEER WILL HAVE TO APPROVE THE ANCHOR BOLTS AND IT'S LOCATION IN THE FOUNDATION PRIOR TO CONSTRUCTION.
3. THE CONTRACTOR SHALL VERIFY THE DIMENSIONS OF THE BBS CABINET PRIOR TO CONSTRUCTING THE FOUNDATION OF THE MODIFIED PORTION OF THE STD. MODEL TYPE R FOUNDATION. THE ENGINEER WILL HAVE TO APPROVE ANY NECESSARY DEVIATIONS PRIOR TO CONSTRUCTION.
4. ALL DIMENSIONS ARE NOMINAL.



BBS SIDE VIEW PIGGY BACK



BBS FRONT EXTERIOR VIEW PIGGY BACK



BBS FRONT INTERIOR / EXTERIOR VIEW PIGGY BACK

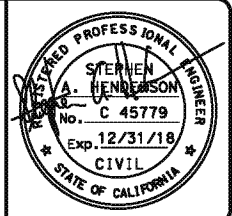
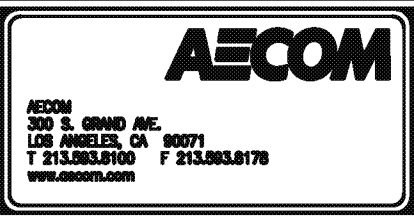
- NOTES:**
1. BBS CABINET SHALL BE ATTACHED TO THE 332 CONTROLLER CABINET WHERE INDICATED ON THE TRAFFIC SIGNAL PLANS. REFER TO DETAIL "F" HEREON.
  2. THE BBS CABINET SHALL CONTAIN THE UPS AND THE BATTERIES.

**BATTERY BACKUP SYSTEM CABINET (BBS)**

**DETAIL "H"**  
NOT TO SCALE



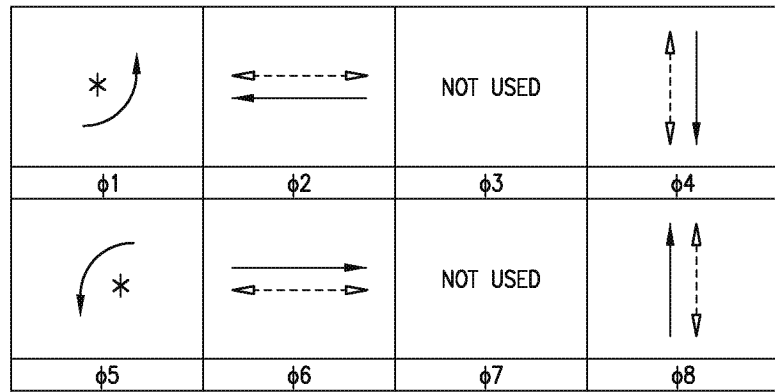
UNDERGROUND SERVICE ALERT OF SOUTHERN CALIFORNIA



REVISIONS		
MARK	DATE	DESCRIPTION
4	10-16-18	Revised per Addendum No. 4

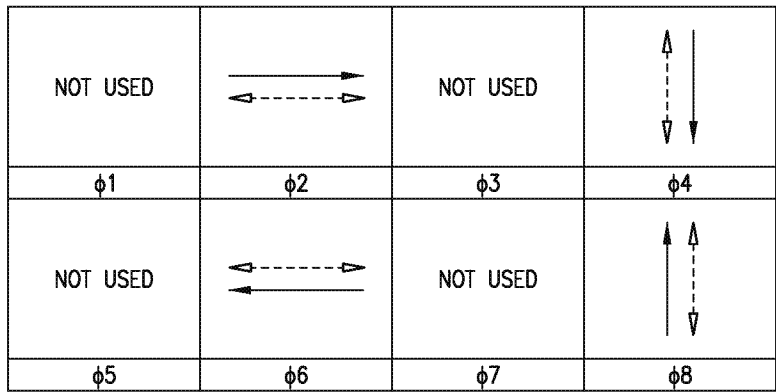
<b>CITY OF INGLEWOOD MAINTAINED PERCENTAGE SHARE 100% CITY OF INGLEWOOD</b>	
<b>CITY OF INGLEWOOD, CALIFORNIA PUBLIC WORKS DEPARTMENT</b>	
PROJECT TITLE: <b>PLANS FOR IMPROVEMENT OF CENTURY BOULEVARD INGLEWOOD AVE TO DOTY AVE CONTROLLER CABINET DETAILS</b>	
DESIGNED BY: DRAWN BY: CHECKED BY:	SUBMITTED BY / APPROVED BY: <i>Peter Pulese</i> PETER PUGLESE, RCE #1419 / CITY TRAFFIC ENGINEER 3/1/2018 DATE
PLAN SCALE: NTS	PROFILE SCALE: VERTICAL HORIZONTAL
PLAN NO. TS-301C SHEET NO. OF	

# PROPOSED PHASE DIAGRAM



\* PROTECTED - PERMISSIVE LEFT TURN

# EXISTING PHASE DIAGRAM

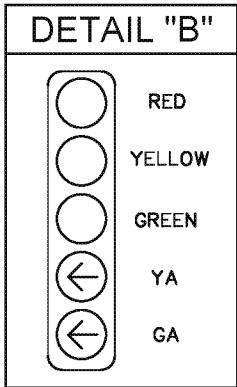
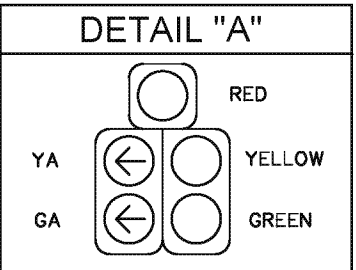


# CONSTRUCTION NOTES

- 1 FURNISH AND INSTALL TYPE 2070 ATC CONTROLLER IN TYPE 333L ALUMINUM CABINET, AND CONTROLLER ASSEMBLY PER CALTRANS TEE SPECIFICATIONS FOR 8 PHASE OPERATION. INCLUDE ALL NECESSARY ACCESSORIES TO PROVIDE INTENDED OPERATION, INCLUDING BATTERY BACKUP SYSTEM (BBS). THE BBS EQUIPMENT, INCLUDING THE BATTERIES, SHALL BE ATTACHED TO THE 333L CABINET. BBS CABINET SHALL CONTAIN UPS SYSTEM AND BATTERIES. BBS CABINET SHALL BE FURNISHED WITH A GENERATOR HOOK-UP AND SWITCH. USE CALTRANS APPROVED VENDOR LIST.
- 3 FURNISH AND INSTALL MAST ARM OR SIGNAL POLE MOUNTED SIGN AS NOTED ON PLAN, PER CALTRANS 2010 STANDARDS.
- 5 CONNECT NEW 2070 ATC CONTROLLER TO ETHERNET SWITCH IN CABINET.
- 6 FURNISH AND INSTALL REFLECTORIZED STREET NAME SIGN PER DETAIL "H" ON TS-301B.
- 8 EXISTING TYPE 170 CONTROLLER AND CABINET SHALL BE SALVAGED AND DELIVERED TO THE CITY YARD AFTER NEW 333L CABINET IS OPERATIONAL.
- 10 INSTALL VIDEO DETECTION CAMERA PER SPECIFICATIONS.
- 13 RELOCATE VIDEO DETECTION CAMERA TO NEW POLE.
- 14 ADD CCTV EXTENSION TO 45' ON POLE SHAFT.
- 16 EXISTING CONDUIT TO REMAIN.
- 20 CONNECT CCTV CAMERA VIA CAT 6 ETHERNET SWITCH IN 333L CABINET.
- BC INSTALL PULL BOX IN EXISTING CONDUIT RUN.
- CB INSTALL CONDUIT INTO PULL BOX.
- RS REMOVE AND SALVAGE EQUIPMENT.

## NOTES:

1. REFER TO STREET LIGHTING PLANS FOR COMMON TRENCH-TYPICAL DETAIL ON PLAN NO. E-311.
2. ALL EXISTING CONDUITS NOT SHOWN FOR REUSE SHALL BE ABANDONED.
3. ALL EXISTING PULLBOXES NOT SHOWN FOR REUSE SHALL BE REMOVED AND BECOME THE PROPERTY OF THE CONTRACTOR
4. REFER TO FIBER OPTIC (F.O.) PLANS FOR F.O. SPECIFIC DETAILS.

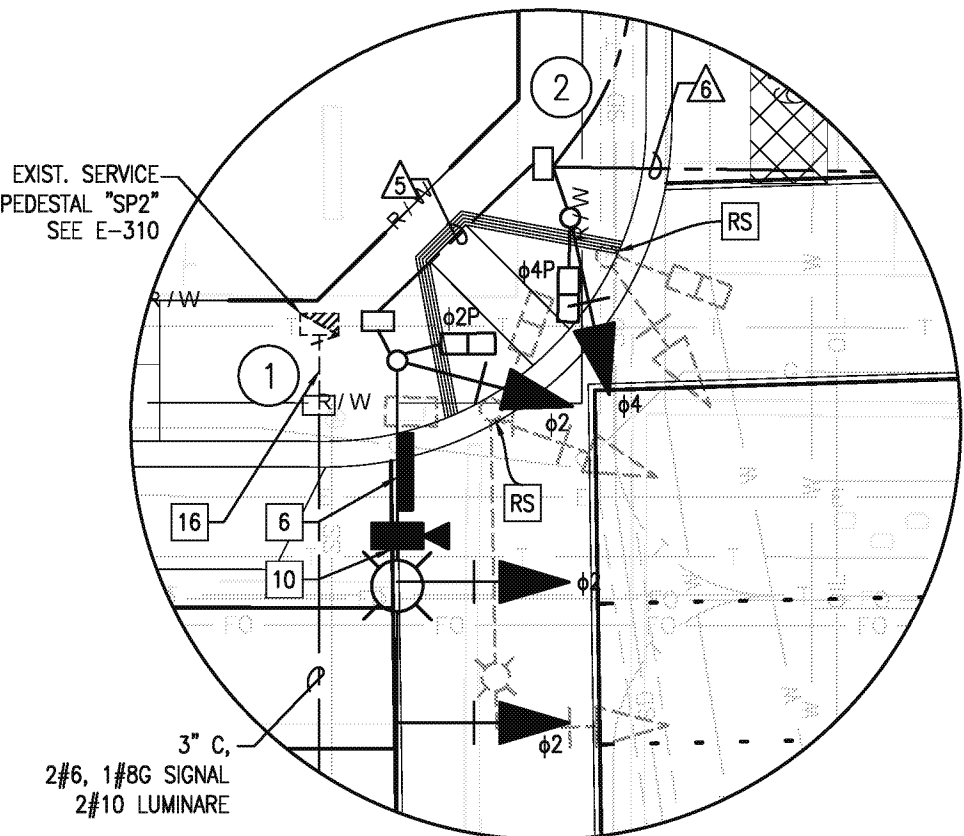


ST-4696

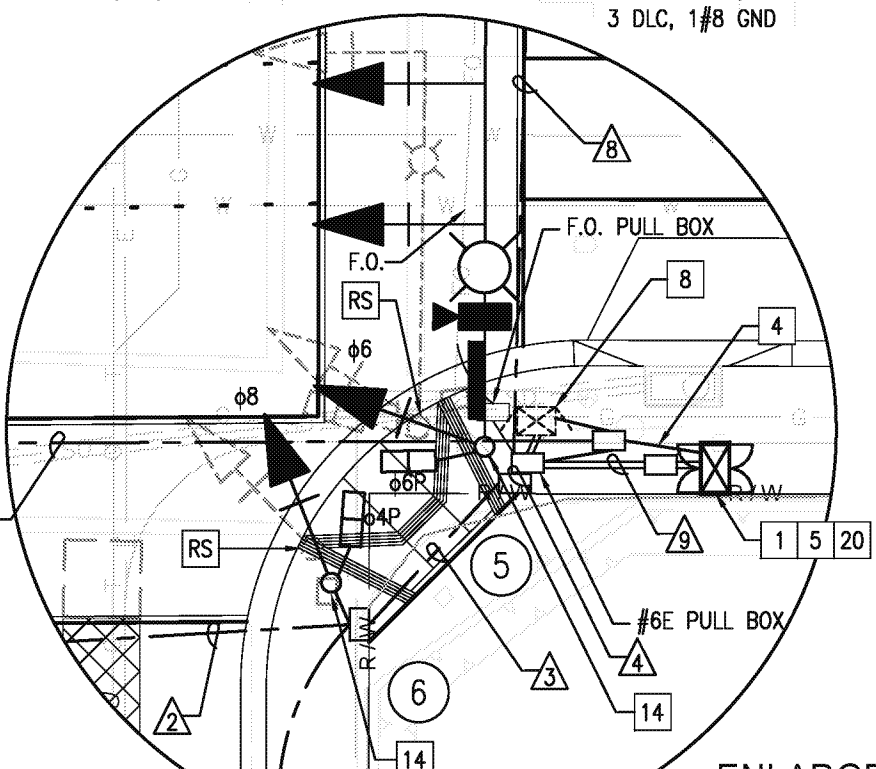
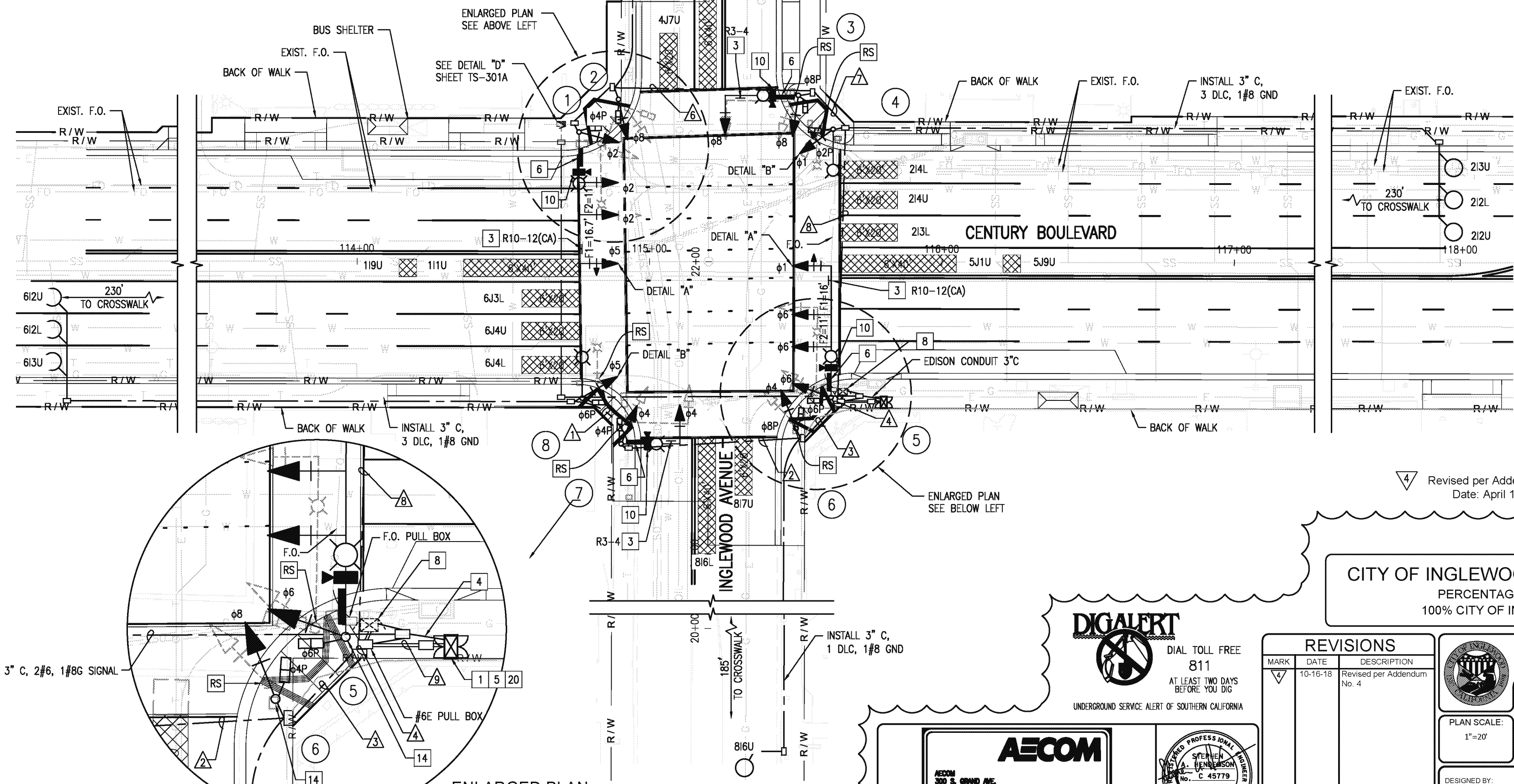
ST-4696

ST-4696

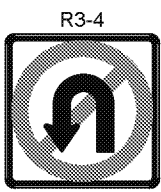
ST-4696



ENLARGED PLAN  
SCALE: 1"=10'



ENLARGED PLAN  
SCALE: 1"=10'

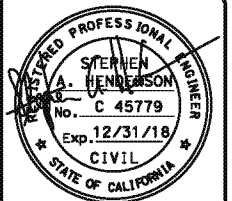
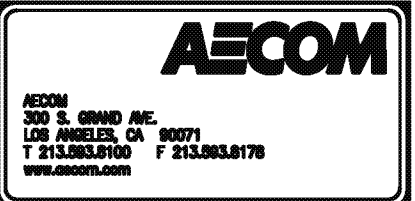


Revised per Addendum No. 4  
Date: April 16, 2018

CITY OF INGLEWOOD MAINTAINED  
PERCENTAGE SHARE  
100% CITY OF INGLEWOOD



UNDERGROUND SERVICE ALERT OF SOUTHERN CALIFORNIA



REVISIONS		
MARK	DATE	DESCRIPTION
1	10-16-18	Revised per Addendum No. 4

**CITY OF INGLEWOOD, CALIFORNIA  
PUBLIC WORKS DEPARTMENT**

PROJECT TITLE:  
**PLANS FOR IMPROVEMENT OF  
INGLEWOOD AVE TO DOTY AVE  
TRAFFIC SIGNAL PLANS - INGLEWOOD AVE**

DESIGNED BY: \_\_\_\_\_  
DRAWN BY: \_\_\_\_\_  
CHECKED BY: \_\_\_\_\_

SUBMITTED BY / APPROVED BY:  
*Peter Pulese*  
PETER PULESE, RCE 81419 / CITY TRAFFIC ENGINEER

PLAN SCALE:  
1"=20'

PROFILE SCALE:  
VERTICAL  
HORIZONTAL

PLAN NO.  
**TS-302**  
SHEET NO. \_\_\_\_\_ OF \_\_\_\_\_

DATE  
**3/1/2018**

ST-4696

ST-4696

POLE AND EQUIPMENT SCHEDULE

POLE AND EQUIPMENT SCHEDULE															
NO.	STANDARD				LED LUMINAIRE (3)	R.S.N.S LEGEND	SIGNAL MOUNTING			PUSH BUTTONS (2) SEE DETAIL "G"*			POLE LOCATION SEE DETAIL "F"*		REMARKS
	TYPE	HEIGHT	SIGNAL M. A.	LUM. M. A.			VEHICLE		PED (1)	QUAD.	PHASE	ARROW	A	B	
							M. A.	POLE							
①	29-5-100	30'	45'	12'	196W	Inglewood	3-MAS	SV-1-T	SP-1-T	2	8	←	5.6'	5.5'	-
②	1-A	10'	-	-	-	-	-	TV-1-T	SP-1-T	3	2	→	7.5'	4.5'	-
③	19-4-100	30'	25'	12'	196W	Century	MAS	SV-1-T	SP-1-T	3	2	←	8'	4'	-
④	15TS	30'	-	12'	196W	-	-	SV-1-T	SP-1-T	4	4	→	7.5'	4'	-
⑤	29-5-100	30'	45'	12'	196W	Inglewood	3-MAS	SV-1-T	SP-1-T	4	4	←	8'	4.7'	CCTV EXTENSION TO 45'
⑥	1-A	10'	-	-	-	-	-	TV-1-T	SP-1-T	1	6	→	8'	3.5'	-
⑦	17-3-100	30'	20'	12'	196W	Century	MAS	SV-1-T	SP-1-T	1	6	←	-0.4'	4.7'	-
⑧	15TS	30'	-	12'	196W	-	-	SV-1-T	SP-1-T	2	8	→	1.9'	4.7'	-

ALL EQUIPMENT IS NEW UNLESS NOTED OTHERWISE.

\* SEE SHEET TS-301B

(1) LED COUNTDOWN PEDESTRIAN SIGNAL FACE

(2) ALL LUMINAIRES SHALL BE MEDIUM CUTOFF LIGHT DISTRIBUTION

CONDUCTOR AND CONDUIT SCHEDULE

AWG SIZE OR CABLE TYPE	POLE & PHASES	CONDUIT LOCATION								
		1	2	3	4	5	6	7	8	9
12 CABLE 11-#14 1-#12  (3-#14, PPB)  3 CABLE	① - φ5, φ2, φ2P, φ8PPB	-/-	-/-	-/-	-/-	1/1	1/1	1/1	1/1	1/1
	② - φ4, φ8P, φ2PPB	-/-	-/-	-/-	-/-	-/-	1/1	1/1	1/1	1/1
	③ - φ4, φ4P, φ2PPB	-/-	-/-	-/-	-/-	-/-	-/-	1/1	1/1	1/1
	④ - φ1, φ2P, φ4PPB	-/-	-/-	-/-	-/-	-/-	-/-	-/-	1/1	1/1
	⑤ - φ6, φ1, φ6P, φ4PPB	-/-	-/-	-/-	1/1	-/-	-/-	-/-	-/-	1/1
	⑥ - φ8, φ4P, φ6PPB	-/-	-/-	1/1	1/1	-/-	-/-	-/-	-/-	1/1
	⑦ - φ8, φ8P, φ6PPB	-/-	1/1	1/1	1/1	-/-	-/-	-/-	-/-	1/1
	⑧ - φ1, φ6P, φ4PPB	1/1	1/1	1/1	1/1	-/-	-/-	-/-	-/-	1/1
TOTALS: 12 CONDUCTOR / 3 CONDUCTOR		1/1	2/2	3/3	4/4	1/1	2/2	3/3	4/4	8/8
#10	LUMINAIRES	2	2	2	2	2	2	2	2	-
VIDEO DETECTION CABLE		-	1	1	2	1	1	2	2	4
LOOP DETECTION CABLE (DLC) AND #8 GROUND		3	3	3	4	-	-	-	3	6
EV CABLE		-	1	1	2	1	1	2	2	4
6PR #19 INTERCONNECT		-	-	-	-	-	-	-	-	-
12 SMFO CABLE		-	-	-	-	-	-	-	-	1
CONDUIT % FILL		12	24	17	24	13	20	18	26	43
CONDUIT SIZE		3"	3"	4"	4"	3"	3"	4"	4"	2-3"

\* ALL CONDUCTORS AND CABLES ARE NEW UNLESS NOTED OTHERWISE.  
E = EXISTING

4 Revised per Addendum No. 4  
Date: April 16, 2018

CITY OF INGLEWOOD MAINTAINED  
PERCENTAGE SHARE  
100% CITY OF INGLEWOOD

REVISIONS		
MARK	DATE	DESCRIPTION
4	10-16-18	Revised per Addendum No. 4



CITY OF INGLEWOOD, CALIFORNIA  
PUBLIC WORKS DEPARTMENT

PLAN SCALE:  
NTS

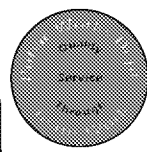
DESIGNED BY:  
DRAWN BY:  
CHECKED BY:

PROJECT TITLE:  
CENTURY BOULEVARD  
INGLEWOOD AVE TO DOTY AVE  
TRAFFIC SIGNAL PLANS - INGLEWOOD AVE

SUBMITTED BY / APPROVED BY:

PETER FUGLESE, RCE 81418 / CITY TRAFFIC ENGINEER

3/1/2018  
DATE



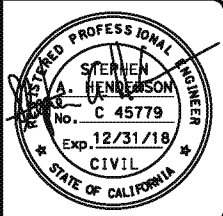
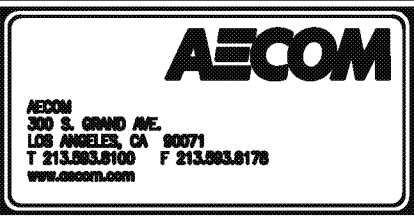
PROFILE SCALE:  
VERTICAL  
HORIZONTAL

PLAN NO.  
TS-302A  
SHEET NO.  
OF



DIAL TOLL FREE  
811  
AT LEAST TWO DAYS  
BEFORE YOU DIG

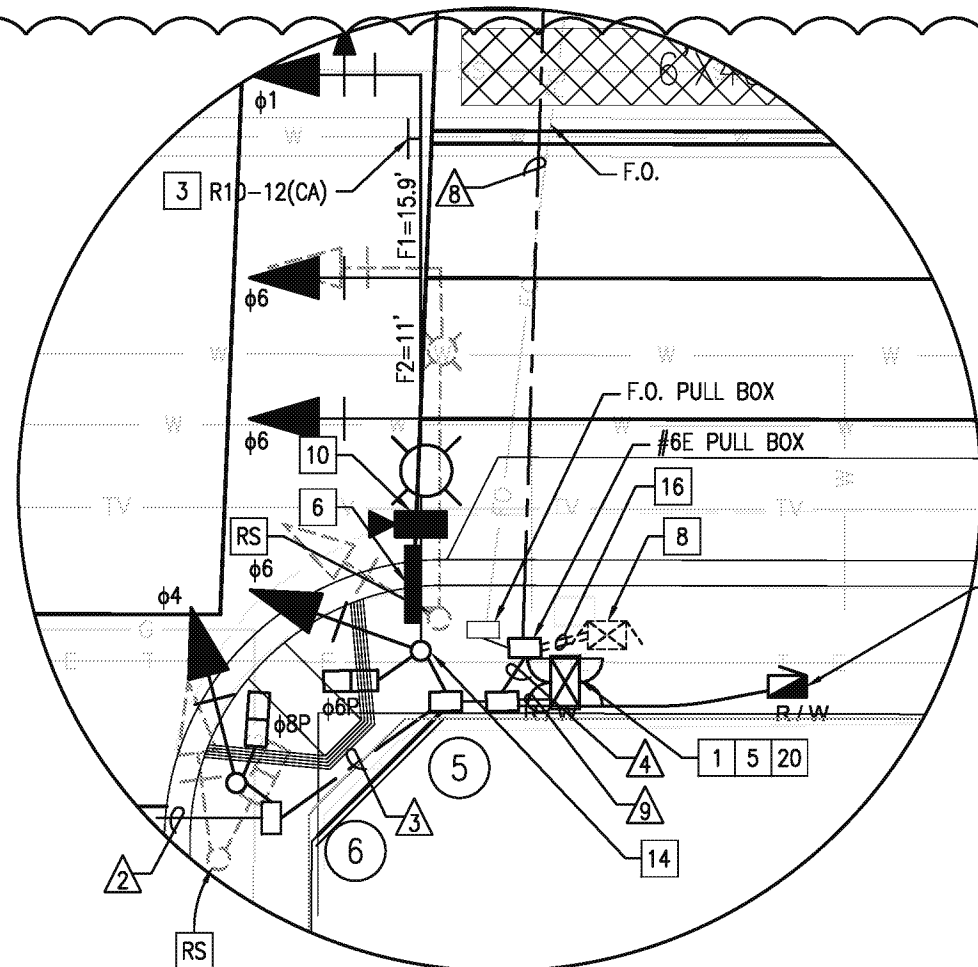
UNDERGROUND SERVICE ALERT OF SOUTHERN CALIFORNIA



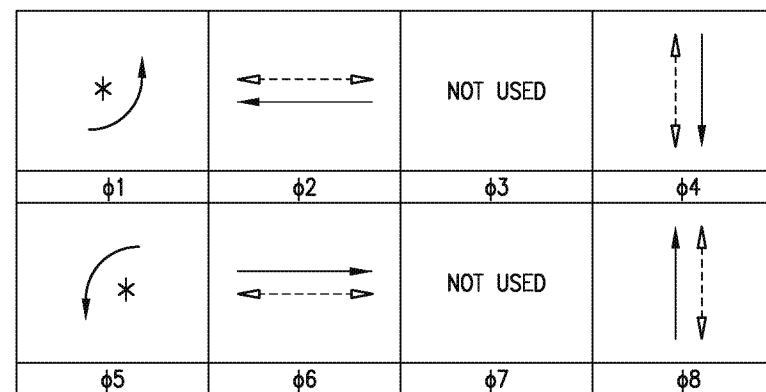
Drawing Name: R:\Projects\TRN\010863\_CBRP\_Inglewood\CA\DOT\Sheet\Project 3 - Inglewood to Doty\Traffic Signal Plans\TS-302A.dwg  
Last Opened: April 16, 2018 - 12:41PM by: jernisson

ST-4696

ST-4696

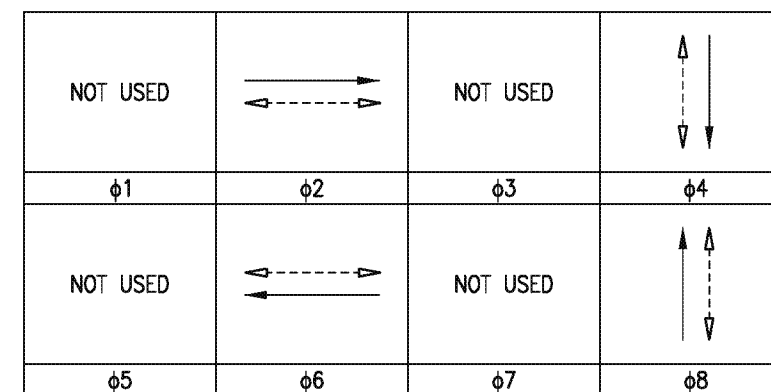


PROPOSED PHASE DIAGRAM



\* PROTECTED - PERMISSIVE LEFT TURN

EXISTING PHASE DIAGRAM

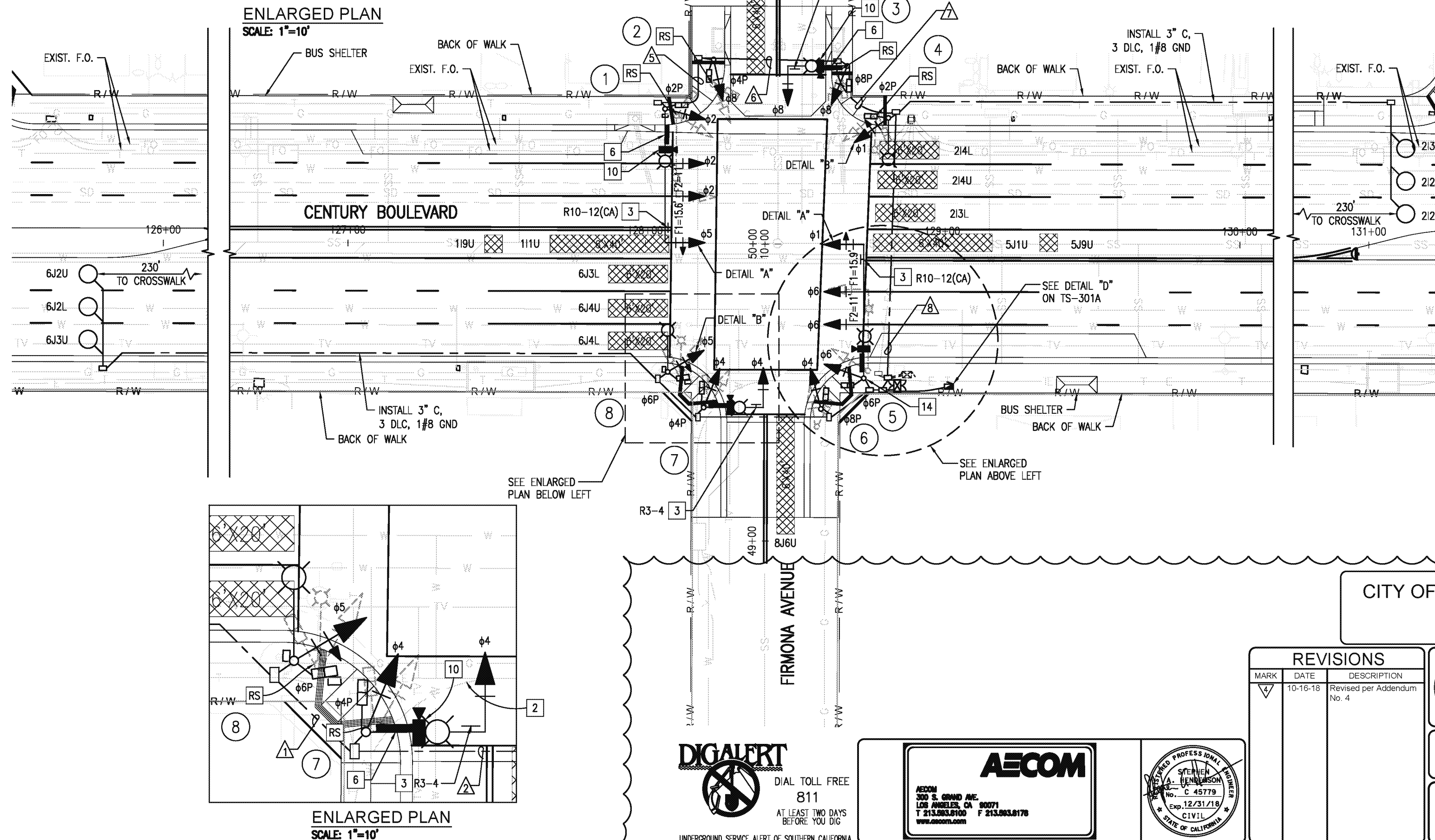
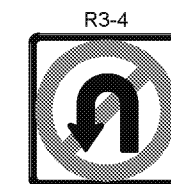


CONSTRUCTION NOTES

- 1 FURNISH AND INSTALL TYPE 2070 ATC CONTROLLER IN TYPE 333L ALUMINUM CABINET, AND CONTROLLER ASSEMBLY PER CALTRANS TEE SPECIFICATIONS FOR 8 PHASE OPERATION. INCLUDE ALL NECESSARY ACCESSORIES TO PROVIDE INTENDED OPERATION, INCLUDING BATTERY BACKUP SYSTEM (BBS). THE BBS EQUIPMENT, INCLUDING THE BATTERIES, SHALL BE ATTACHED TO THE 333L CABINET. BBS CABINET SHALL CONTAIN UPS SYSTEM AND BATTERIES. BBS CABINET SHALL BE FURNISHED WITH A GENERATOR HOOK-UP AND SWITCH. USE CALTRANS APPROVED VENDOR LIST.
- 3 FURNISH AND INSTALL MAST ARM OR SIGNAL POLE MOUNTED SIGN AS NOTED ON PLAN, PER CALTRANS 2010 STANDARDS.
- 5 CONNECT NEW 2070 ATC CONTROLLER TO ETHERNET SWITCH IN CABINET.
- 6 FURNISH AND INSTALL REFLECTORIZED STREET NAME SIGN PER DETAIL "H" ON TS-301B.
- 8 EXISTING TYPE 170 CONTROLLER AND CABINET SHALL BE SALVAGED AND DELIVERED TO THE CITY YARD AFTER NEW 333L CABINET IS OPERATIONAL.
- 10 INSTALL VIDEO DETECTION CAMERA PER SPECIFICATIONS.
- 16 EXISTING CONDUIT TO REMAIN.
- 20 CONNECT CCTV CAMERA VIA CAT 6 ETHERNET SWITCH IN 333L CABINET.
- CB INSTALL CONDUIT INTO EXISTING PULL BOX.
- CC CONNECT NEW AND EXISTING CONDUIT. REMOVE EXISTING CONDUCTORS AND INSTALL CONDUCTORS AS INDICATED.
- RS REMOVE AND SALVAGE EQUIPMENT.

## NOTES:

1. REFER TO STREET LIGHTING PLANS FOR COMMON TRENCH-TYPICAL DETAIL ON PLAN NO. E-311.
2. ALL EXISTING CONDUITS NOT SHOWN FOR REUSE SHALL BE ABANDONED.
3. ALL EXISTING PULLBOXES NOT SHOWN FOR REUSE SHALL BE REMOVED AND BECOME THE PROPERTY OF THE CONTRACTOR
4. REFER TO FIBER OPTIC (F.O.) PLANS FOR F.O. SPECIFIC DETAILS.

ENLARGED PLAN  
SCALE: 1"=10'

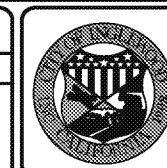
CENTURY BOULEVARD

FIRMONA AVENUE

CITY OF INGLEWOOD MAINTAINED  
PERCENTAGE SHARE  
100% CITY OF INGLEWOODRevised per Addendum No. 4  
Date: April 16, 201820' 10' 0 20'  
SCALE: 1" = 20'

## REVISIONS

MARK	DATE	DESCRIPTION
4	10-16-18	Revised per Addendum No. 4

PLAN SCALE:  
1"=20'CITY OF INGLEWOOD, CALIFORNIA  
PUBLIC WORKS DEPARTMENTPROJECT TITLE:  
PLANS FOR IMPROVEMENT OF  
CENTURY BOULEVARD  
INGLEWOOD AVE TO DOTY AVE  
TRAFFIC SIGNAL PLANS - FIRMONA AVEDESIGNED BY:  
DRAWN BY:  
CHECKED BY:

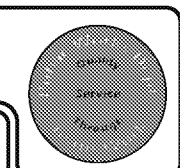
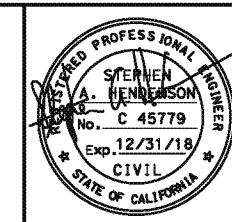
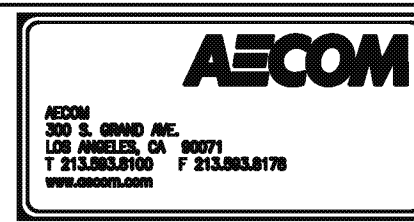
SUBMITTED BY / APPROVED BY:

PETER PUGLIESE, RCE 81419 / CITY TRAFFIC ENGINEER  
DATE

3/1/2018

PLAN NO.  
TS-303  
SHEET NO.  
OF

UNDERGROUND SERVICE ALERT OF SOUTHERN CALIFORNIA

DIAL TOLL FREE  
811  
AT LEAST TWO DAYS  
BEFORE YOU DIGPROFILE SCALE:  
VERTICAL  
HORIZONTALPLAN NO.  
TS-303  
SHEET NO.  
OF

POLE AND EQUIPMENT SCHEDULE															
NO.	STANDARD				LED LUMINAIRE (3)	R.S.N.S LEGEND	SIGNAL MOUNTING			PED PUSH BUTTON (2) SEE DETAIL "G"			POLE LOCATION SEE DETAIL "F"		REMARKS
	TYPE	HEIGHT	SIGNAL M. A.	LUM. M. A.			VEHICLE		PED (1)	QUAD.	PHASE	ARROW	A	B	
							M. A.	POLE							
①	29-5-100	30'	45'	12'	196W	← Firmona/Fir →	3-MAS	SV-1-T	SP-1-T	2	8	←	0'	5.4'	-
②	1-A	10'	-	-	-	-	-	TV-1-T	SP-1-T	3	2	→	-2'	3.7'	-
③	17-3-100	30'	20'	12'	196W	Century	MAS	SV-1-T	SP-1-T	3	2	←	-2'	5.3'	-
④	15TS	30'	-	12'	196W	-	-	SV-1-T	SP-1-T	4	4	→	-1'	2.5'	-
⑤	29-5-100	30'	45'	12'	196W	← Fir/Firmona →	3-MAS	SV-1-T	SP-1-T	4	4	←	2'	5'	CCTV EXTENSION TO 45'
⑥	1-A	10'	-	-	-	-	-	TV-1-T	SP-1-T	1	6	→	4.5'	3'	-
⑦	17-3-100	30'	20'	12'	196W	Century	MAS	SV-1-T	SP-1-T	1	6	←	5'	5'	-
⑧	15TS	30'	-	12'	196W	-	-	SV-1-T	SP-1-T	2	8	→	2'	3'	-

ALL SIGNAL EQUIPMENT IS NEW UNLESS NOTED OTHERWISE.

\* SEE SHEET TS-301B

(1) LED COUNTDOWN PEDESTRIAN SIGNAL FACE

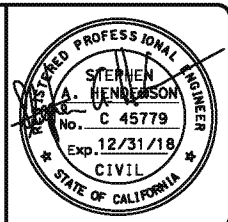
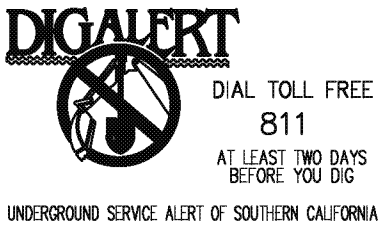
(2) ALL LUMINAIRES SHALL BE MEDIUM CUTOFF LIGHT DISTRIBUTION

CONDUCTOR AND CONDUIT SCHEDULE												
AWG SIZE OR CABLE TYPE	POLE & PHASES	CONDUIT LOCATION										
		1	2	3	4	5	6	7	8	9		
<div>12 CABLE</div> <div>11-#14 1-#12</div> <div>(3-#14, PPB)</div> <div>3 CABLE</div>	① - φ5, φ2, φ2P, φ4PPB	-/-	-/-	-/-	-/-	1/1	1/1	1/1	1/1	1/1		
	② - φ8, φ4P, φ2PPB	-/-	-/-	-/-	-/-	-/-	1/1	1/1	1/1	1/1		
	③ - φ8, φ8P, φ2PPB	-/-	-/-	-/-	-/-	-/-	-/-	1/1	1/1	1/1		
	④ - φ1, φ2P, φ8PPB	-/-	-/-	-/-	-/-	-/-	-/-	-/-	1/1	1/1		
	⑤ - φ6, φ1, φ6P, φ8PPB	-/-	-/-	-/-	1/1	-/-	-/-	-/-	-/-	1/1		
	⑥ - φ4, φ4P, φ6PPB	-/-	-/-	1/1	1/1	-/-	-/-	-/-	-/-	1/1		
	⑦ - φ4, φ4P, φ6PPB	-/-	1/1	1/1	1/1	-/-	-/-	-/-	-/-	1/1		
	⑧ - φ5, φ6P, φ4PPB	1/1	1/1	1/1	1/1	-/-	-/-	-/-	-/-	1/1		
	TOTALS: 12 CONDUCTOR / 3 CONDUCTOR	1/1	2/2	3/3	4/4	1/1	2/2	3/3	4/4	8/8		
#10	LUMINAIRES	2	2	2	2	2	2	2	2	-		
VIDEO DETECTION CABLE		-	1	1	2	1	1	2	2	4		
LOOP DETECTION CABLE (DLC) AND #8 GROUND		-	3	3	3	-	-	-	3	6		
EV CABLE		-	1	1	2	1	1	2	2	4		
6PR #19 INTERCONNECT		-	-	-	-	-	-	-	-	-		
72 SMFO CABLE		-	-	-	-	-	-	-	-	1		
CONDUIT % FILL		12	24	17	24	13	20	18	26	42		
CONDUIT SIZE		3"	3"	4"	4"	3"	3"	4"	4"	2-3"		

NOTE: ALL CONDUCTORS AND CONDUITS ARE NEW UNLESS NOTED OTHERWISE.

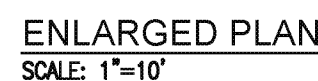
4 Revised per Addendum No. 4  
Date: April 16, 2018

CITY OF INGLEWOOD MAINTAINED  
PERCENTAGE SHARE  
100% CITY OF INGLEWOOD









REVISIONS		
MARK	DATE	DESCRIPTION
4	10-16-18	Revised per Addendum No. 4


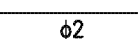
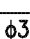
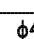
	<b>CITY OF INGLEWOOD, CALIFORNIA PUBLIC WORKS DEPARTMENT</b>	
PLAN SCALE: NTS	PROJECT TITLE: <b>PLANS FOR IMPROVEMENT OF CENTURY BOULEVARD INGLEWOOD AVE TO DOTY AVE TRAFFIC SIGNAL PLANS - FIRMONA AVE</b>	PROFILE SCALE: VERTICAL HORIZONTAL
DESIGNED BY: DRAWN BY: CHECKED BY:	SUBMITTED BY / APPROVED BY:  PETER PUGLIESE, RCE 81419 / CITY TRAFFIC ENGINEER DATE: 3/1/2018	PLAN NO. TS-303A SHEET NO. OF



EXISTING PHASE DIAGRAM

		NOT USED	NOT USED
$\phi 1$	$\phi 2$	$\phi 3$	$\phi 4$
			
$\phi 5$	$\phi 6$	$\phi 7$	$\phi 8$

\* PROTECTED - PERMISSIVE LEFT TURN

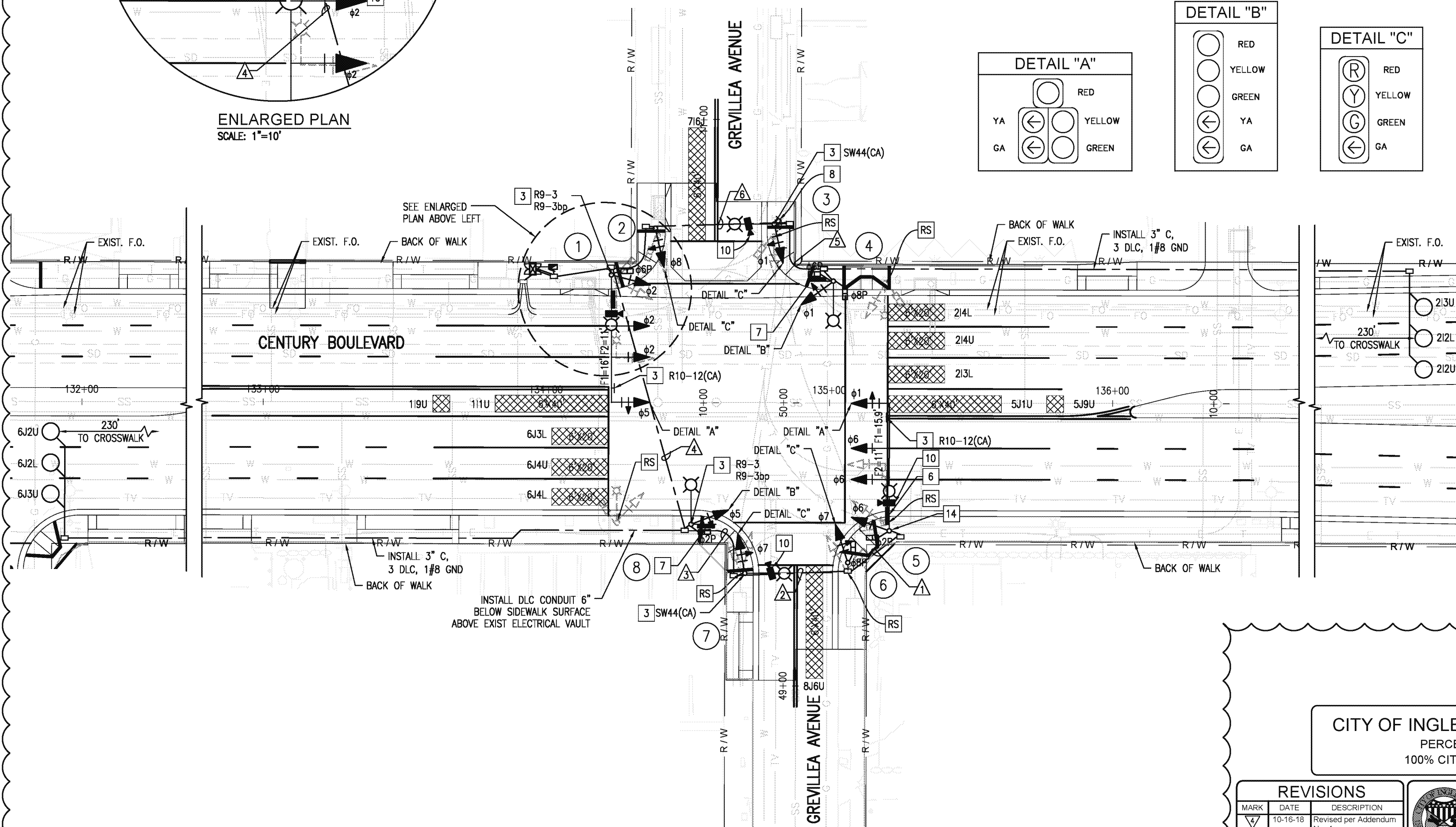
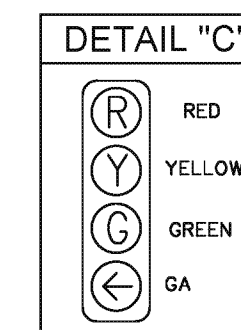
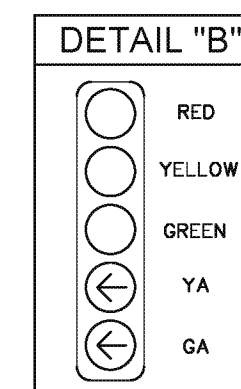
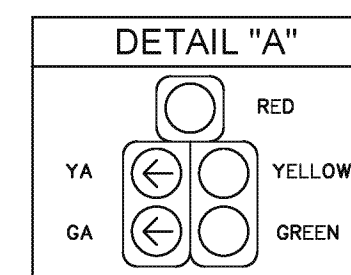
NOT USED		NOT USED	NOT USED
$\phi_1$	$\phi_2$	$\phi_3$	$\phi_4$
NOT USED			
$\phi_5$	$\phi_6$	$\phi_7$	$\phi_8$

## CONSTRUCTION NOTES

- 1 FURNISH AND INSTALL TYPE 2070 ATC CONTROLLER IN TYPE 333L ALUMINUM CABINET, AND CONTROLLER ASSEMBLY PER CALTRANS TEES SPECIFICATIONS FOR 8 PHASE OPERATION. INCLUDE ALL NECESSARY ACCESSORIES TO PROVIDE INTENDED OPERATION, INCLUDING BATTERY BACKUP SYSTEM (BBS). THE BBS EQUIPMENT, INCLUDING THE BATTERIES, SHALL BE ATTACHED TO THE 333L CABINET. BBS CABINET SHALL CONTAIN UPS SYSTEM AND BATTERIES. BBS CABINET SHALL BE FURNISHED WITH A GENERATOR HOOK-UP AND SWITCH. USE CALTRANS APPROVED VENDOR LIST.
- 3 FURNISH AND INSTALL MAST ARM OR SIGNAL POLE MOUNTED SIGN AS NOTED ON PLAN, PER CALTRANS 2010 STANDARDS.
- 5 CONNECT NEW 2070 ATC CONTROLLER TO ETHERNET SWITCH IN CABINET.
- 6 FURNISH AND INSTALL REFLECTORIZED STREET NAME SIGN PER DETAIL "H" ON TS-301B.
- 10 INSTALL VIDEO DETECTION CAMERA PER SPECIFICATIONS.
- 14 ADD CCTV EXTENSION TO 45' ON POLE SHAFT.
- 19 FURNISH AND INSTALL 3" CONDUIT WITH 2#10, LUMINAIRE.
- 20 CONNECT CCTV CAMERA VIA CAT 6 ETHERNET SWITCH IN 333L CABINET.

NOTES:

1. REFER TO STREET LIGHTING PLANS FOR COMMON TRENCH--TYPICAL DETAIL ON PLAN NO. E-311.
2. ALL EXISTING CONDUITS NOT SHOWN FOR REUSE SHALL BE ABANDONED.
3. ALL EXISTING PULLBOXES NOT SHOWN FOR REUSE SHALL BE REMOVED AND BECOME THE PROPERTY OF THE CONTRACTOR
4. REFER TO FIBER OPTIC (F.O.) PLANS FOR F.O. SPECIFIC DETAILS.

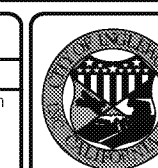


R10-12 (CA)  
LEFT TURN  
YIELD  
ON GREEN  


4 Revised per Addendum No. 4  
Date: April 16, 2018

CITY OF INGLEWOOD MAINTAINED  
PERCENTAGE SHARE  
100% CITY OF INGLEWOOD

REVISIONS		
MARK	DATE	DESCRIPTION
4	10-16-18	Revised per Addendum No. 4



PLAN SCALE  
AS NOTED

DESIGNED BY: \_\_\_\_\_  
DRAWN BY: \_\_\_\_\_  
CHECKED BY: \_\_\_\_\_

CITY OF INGLEWOOD, CALIFORNIA  
PUBLIC WORKS DEPARTMENT

PROJECT TITLE: PLANS FOR IMPROVEMENT OF  
CENTURY BOULEVARD  
INGLEWOOD AVE TO DOTY AVE  
TRAFFIC SIGNAL PLANS - GREVILLEA AVE

SUBMITTED BY / APPROVED BY

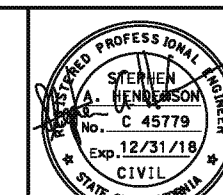
Peter P. Reese  
PETER P. REESE, ROE 81410 / CITY TRAFFIC ENGINEER

PROFILE SCAL  
VERTICAL  
HORIZONTAL

PLAN NO.  
TS-304  
SHEET NO.  
OF



UNDERGROUND SERVICE ALERT OF SOUTHERN CALIFORNIA



ST-4696

ST-4696

POLE AND EQUIPMENT SCHEDULE															
NO.	STANDARD				LED LUMINAIRE (3)	R.S.N.S LEGEND	SIGNAL MOUNTING			PED PUSH BUTTONS (2) SEE DETAIL "G"*			POLE LOCATION SEE DETAIL "F"*		REMARKS
	TYPE	HEIGHT	SIGNAL M. A.	LUM. M. A.			VEHICLE		PED (1)	QUAD.	PHASE	ARROW	A	B	
							M. A.	POLE							
①	29-5-100	30'	45'	12'	196W	Grevillea	3-MAS	SV-1-T	SP-1-T	-	-	-	1'	5'	-
②	1-A	10'	-	-	-	-	-	TV-1-T	-	3	2	→	-1.5'	3.5'	-
③	15TS	30'	-	10'	196W	-	-	SV-1-T	-	3	2	←	-3.1'	2.5'	-
④	15TS	30'	-	12'	196W	Century	-	SV-1-T	SP-2-T	2	4	←	-3.4'	3'	-
⑤	29-5-100	30'	45'	12'	196W	Grevillea	3-MAS	SV-1-T	SP-1-T	4	4	←	2'	5'	CCTV EXTENSION TO 45'
⑥	1-A	10'	-	-	-	-	-	TV-1-T	SP-1-T	1	6	→	3.6'	3'	-
⑦	15TS	30'	-	10'	196W	-	-	SV-1-T	-	1	6	←	-0.3'	3'	-
⑧	15TS	30'	-	12'	196W	Century	-	SV-1-T	SP-1-T	-	-	-	-2'	3'	-

ALL EQUIPMENT IS NEW UNLESS NOTED OTHERWISE.

\* SEE SHEET TS-301B

(1) LED COUNTDOWN PEDESTRIAN SIGNAL FACE

(2) ALL LUMINAIRES SHALL BE MEDIUM CUTOFF LIGHT DISTRIBUTION


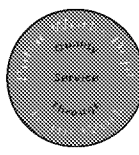
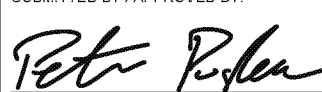
CONDUCTOR AND CONDUIT SCHEDULE												
AWG SIZE OR CABLE TYPE	POLE & PHASES	CONDUIT LOCATION										
		1	2	3	4	5	6	7	8	9		
12 CABLE 11-#14 1-#12  (3-#14, PPB)  3 CABLE	① - φ5, φ2, φ2P	-/-	-/-	-/-	-/-	-/-	-/-	-/-	1/-	1/-		
	② - φ4, φ2PPB	-/-	-/-	-/-	-/-	-/-	-/-	1/1	1/1	1/1		
	③ - φ4, φ2PPB	-/-	-/-	-/-	-/-	-/-	1/1	1/1	1/1	1/1		
	④ - φ1, φ2P, φ4P, φ4PPB	-/-	-/-	-/-	-/-	1/1	1/1	1/1	1/1	1/1		
	⑤ - φ6, φ1, φ6P, φ4PPB	1/1	1/1	1/1	1/1	-/-	-/-	-/-	1/1	1/1		
	⑥ - φ3, φ4P, φ6PPB	-/-	1/1	1/1	1/1	-/-	-/-	-/-	1/1	1/1		
	⑦ - φ3, φ6PPB	-/-	-/-	1/1	1/1	-/-	-/-	-/-	1/1	1/1		
	⑧ - φ5, φ6P	-/-	-/-	-/-	1/-	-/-	-/-	-/-	1/-	1/-		
TOTALS: 12 CONDUCTOR / 3 CONDUCTOR		1/1	2/2	3/3	4/3	1/1	2/2	3/3	8/6	8/6		
#10	LUMINAIRES	2	2	2	2	-	2	2	2	-		
VIDEO DETECTION CABLE		1	1	2	2	-	1	1	4	4		
LOOP DETECTION CABLE (DLC) AND #8 GROUND		-	-	-	3	3	3	3	6	6		
EV CABLE		1	1	2	2	-	1	1	4	4		
6PR #19 INTERCONNECT		-	-	-	-	-	-	-	-	-		
12 SMFO CABLE		-	-	-	-	-	-	-	-	1		
CONDUIT % FILL		13	20	18	23	12	24	17	21	23		
CONDUIT SIZE		3"	3"	4"	4"	3"	3"	4"	2-4"	2-4"		

NOTE: ALL CONDUCTORS AND CONDUITS ARE NEW UNLESS NOTED OTHERWISE.

4/ Revised per Addendum No. 4  
Date: April 16, 2018

CITY OF INGLEWOOD MAINTAINED  
PERCENTAGE SHARE  
100% CITY OF INGLEWOOD

REVISIONS		
MARK	DATE	DESCRIPTION
4/	10-16-18	Revised per Addendum No. 4

	<b>CITY OF INGLEWOOD, CALIFORNIA PUBLIC WORKS DEPARTMENT</b>	
PLAN SCALE: NTS	PROJECT TITLE: <b>PLANS FOR IMPROVEMENT OF CENTURY BOULEVARD INGLEWOOD AVE TO DOTY AVE TRAFFIC SIGNAL PLANS - GREVILLEA AVE</b>	PROFILE SCALE: VERTICAL HORIZONTAL
DESIGNED BY: DRAWN BY: CHECKED BY:	SUBMITTED BY / APPROVED BY:  PETER PUGLIESE, RCE 81419 / CITY TRAFFIC ENGINEER DATE 3/1/2018	PLAN NO. TS-304A SHEET NO. OF

**DIGALERT**  
DIAL TOLL FREE  
811  
AT LEAST TWO DAYS  
BEFORE YOU DIG  
UNDERGROUND SERVICE ALERT OF SOUTHERN CALIFORNIA

**AECOM**  
AECOM  
300 S. GRAND AVE.  
LOS ANGELES, CA 90071  
T 213.983.8100 F 213.983.8176  
www.aecom.com

REGISTERED PROFESSIONAL ENGINEER  
STATE OF CALIFORNIA  
No. 45779  
Exp. 12/31/18  
CIVIL

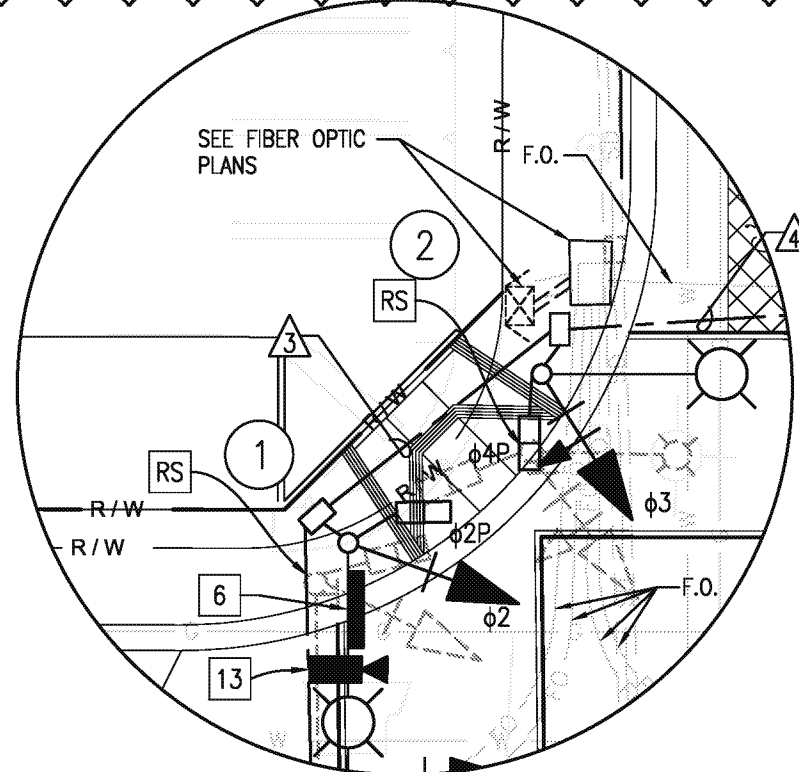
Drawing Name: R:\Projects\TRN\010863\_CBRP\_Inglewood\CAD\Civil\Sheet\Project 3 - Inglewood to Doty\Traffic Signal Plans\TS-304A.dwg  
Last Opened: April 16, 2018 - 11:37AM by: jennab

ST-4696

ST-4696

ST-4696

ST-4696



ENLARGED PLAN  
SCALE: 1"=10'

BACK OF WALK  
EXIST. F.O.  
R/W

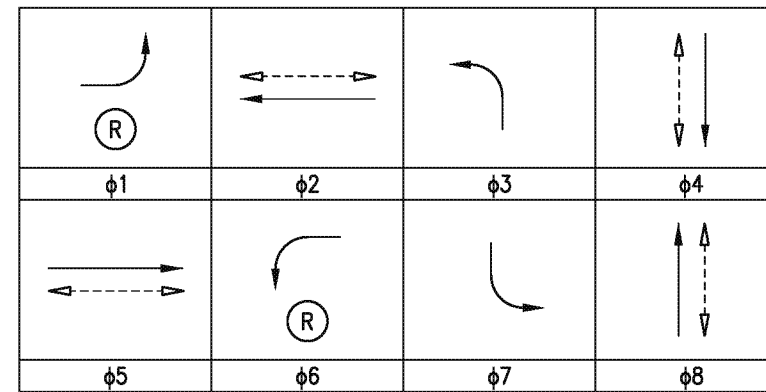
SEE ENLARGED PLAN  
ABOVE LEFT

SEE ENLARGED PLAN  
BELOW LEFT

CENTURY BOULEVARD

HAWTHORNE

PROPOSED PHASE DIAGRAM

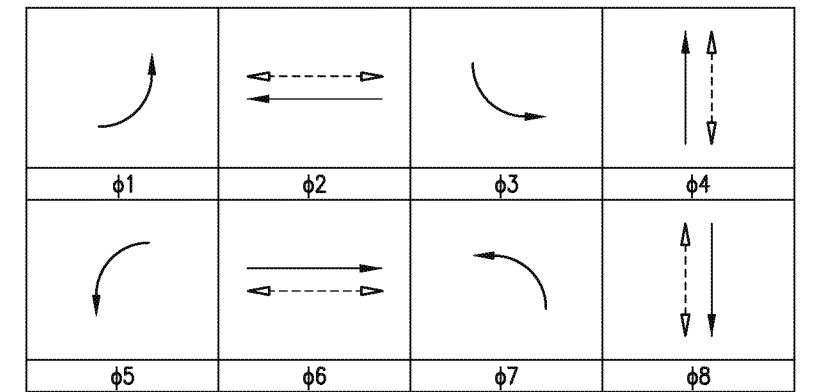


LEAD-LAG OPERATION E-W DIRECTIONS

(R) = RESTRICTED PHASE

LAG = phi 2, phi 4, phi 5, phi 8

EXISTING PHASE DIAGRAM



CONSTRUCTION NOTES

- 1 FURNISH AND INSTALL TYPE 2070 ATC CONTROLLER IN TYPE 333L ALUMINUM CABINET, AND CONTROLLER ASSEMBLY PER CALTRANS TEE SPECIFICATIONS FOR 8 PHASE OPERATION. INCLUDE ALL NECESSARY ACCESSORIES TO PROVIDE INTENDED OPERATION, INCLUDING BATTERY BACKUP SYSTEM (BBS). THE BBS EQUIPMENT, INCLUDING THE BATTERIES, SHALL BE ATTACHED TO THE 333L CABINET. BBS CABINET SHALL CONTAIN UPS SYSTEM AND BATTERIES. BBS CABINET SHALL BE FURNISHED WITH A GENERATOR HOOK-UP AND SWITCH. USE CALTRANS APPROVED VENDOR LIST.
  - 3 FURNISH AND INSTALL MAST ARM OR SIGNAL POLE MOUNTED SIGN AS NOTED ON PLAN, PER CALTRANS 2010 STANDARDS.
  - 5 CONNECT NEW 2070 ATC CONTROLLER TO ETHERNET SWITCH IN CABINET.
  - 6 FURNISH AND INSTALL REFLECTORIZED STREET NAME SIGN PER DETAIL "H" ON TS-301B.
  - 8 EXISTING TYPE 170 CONTROLLER AND CABINET SHALL BE SALVAGED AND DELIVERED TO THE CITY YARD AFTER NEW 333L CABINET IS OPERATIONAL.
  - 13 RELOCATE VIDEO DETECTION CAMERA TO NEW POLE.
  - 14 ADD CCTV EXTENSION TO 45' ON POLE SHAFT.
  - 16 EXISTING CONDUIT TO REMAIN.
  - 19 FURNISH AND INSTALL 3" CONDUIT WITH 2#10, LUMINAIRE.
  - 20 CONNECT CCTV CAMERA VIA CAT 6 ETHERNET SWITCH IN 333L CABINET.
  - RL RELOCATE EQUIPMENT.
  - RS REMOVE AND SALVAGE EQUIPMENT.
- NOTES:
1. REFER TO STREET LIGHTING PLANS FOR COMMON TRENCH-TYPICAL DETAIL ON PLAN NO. E-311.
  2. ALL EXISTING CONDUITS NOT SHOWN FOR REUSE SHALL BE ABANDONED.
  3. ALL EXISTING PULLBOXES NOT SHOWN FOR REUSE SHALL BE REMOVED AND BECOME THE PROPERTY OF THE CONTRACTOR
  4. REFER TO FIBER OPTIC (F.O.) PLANS FOR F.O. SPECIFIC DETAILS.

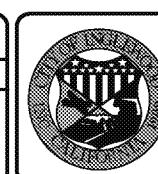


Revised per Addendum No. 4  
Date: April 16, 2018

20' 10' 0 20'  
SCALE: 1" = 20'



REVISIONS		
MARK	DATE	DESCRIPTION
4	10-16-18	Revised per Addendum No. 4



CITY OF INGLEWOOD, CALIFORNIA  
PUBLIC WORKS DEPARTMENT

PROJECT TITLE:  
PLANS FOR IMPROVEMENT OF  
CENTURY BOULEVARD  
INGLEWOOD AVE TO DOTY AVE  
TRAFFIC SIGNAL PLANS - HAWTHORNE BLVD

PLAN SCALE:  
1"=20'

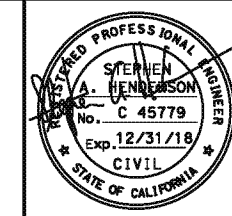
DESIGNED BY:  
DRAWN BY:  
CHECKED BY:

SUBMITTED BY / APPROVED BY:  
*Peter Pulese*  
PETER PULESE, RCE 81419 / CITY TRAFFIC ENGINEER

3/1/2018  
DATE

PLAN NO.  
TS-305  
SHEET NO.  
OF

CITY OF INGLEWOOD MAINTAINED  
PERCENTAGE SHARE  
100% CITY OF INGLEWOOD



Drawing Name: E:\Projects\TRN010863\_CBRP\_Inglewood\CD\CD\Sheet\Project 3 - Inglewood to Doty\Traffic Signal Plans\TS-305.dwg  
Last Opened: April 16, 2018 - 11:38AM by: kummb

ST-4696

ST-4696

POLE AND EQUIPMENT SCHEDULE															
NO.	STANDARD				LED LUMINAIRE (3)	R.S.N.S LEGEND	SIGNAL MOUNTING			PED PUSH BUTTONS (2) SEE DETAIL "G"*			POLE LOCATION SEE DETAIL "F"*		REMARKS
	TYPE	HEIGHT	SIGNAL M. A.	LUM. M. A.			VEHICLE		PED (1)	QUAD.	PHASE	ARROW	A	B	
							M. A.	POLE							
①	29-5-100	30'	50'	15'	196W	←Hawthorne/La Brea→	3-MAS	SV-1-T	SP-1-T	2	8	←	13'	3.6'	-
②	15TS	30'	-	12'	196W	-	-	SV-1-T	SP-1-T	3	2	→	15'	3'	-
③	29-5-100	30'	55'	15'	196W	Century	3-MAS	SV-1-T	SP-1-T	3	2	←	12.6'	3.5'	-
④	15TS	30'	-	12'	196W	-	-	SV-1-T	SP-1-T	4	4	→	14.4'	3'	-
⑤	29-5-100	30'	50'	15'	196W	←La Brea/Hawthorne→	3-MAS	SV-1-T	SP-1-T	4	4	←	7'	5.2'	CCTV EXTENSION TO 45'
⑥	15TS	30'	-	12'	196W	-	-	SV-1-T	SP-1-T	1	6	→	9'	3'	-
⑦	29-5-100	30'	55'	15'	196W	Century	3-MAS	SV-1-T	SP-1-T	1	6	←	9.4'	5.3'	-
⑧	15TS	30'	-	12'	196W	-	-	SV-1-T	SP-1-T	2	8	→	12.2'	2.7'	-

ALL EQUIPMENT IS NEW UNLESS NOTED.

\* SEE SHEET TS-301B

(1) LED COUNTDOWN PEDESTRIAN SIGNAL FACE

(2) ALL LUMINAIRES SHALL BE MEDIUM CUTOFF LIGHT DISTRIBUTION

CONDUCTOR AND CONDUIT SCHEDULE										
AWG SIZE OR CABLE TYPE	POLE & PHASES	CONDUIT LOCATION								
		1	2	3	4	5	6	7	8	
12 CABLE 11-#14 1-#12  (3-#14, PPB)  3 CABLE	① - ϕ5, ϕ2, ϕ2P, ϕ8PPB	-/-	-/-	1/1	1/1	-/-	-/-	-/-	1/1	
	② - ϕ7, ϕ8P, ϕ2PPB	-/-	-/-	-/-	1/1	-/-	-/-	-/-	1/1	
	③ - ϕ7, ϕ4, ϕ4P ϕ2PPB	-/-	-/-	-/-	-/-	-/-	-/-	-/-	1/1	
	④ - ϕ1, ϕ2P, ϕ4PPB	-/-	-/-	-/-	-/-	-/-	-/-	1/1	1/1	
	⑤ - ϕ1, ϕ6, ϕ6P, ϕ4PPB	-/-	-/-	-/-	-/-	-/-	1/1	1/1	1/1	
	⑥ - ϕ3, ϕ4P, ϕ6PPB	-/-	-/-	-/-	-/-	1/1	1/1	1/1	1/1	
	⑦ - ϕ3, ϕ8, ϕ8P, ϕ6PPB	1/1	1/1	1/1	1/1	-/-	-/-	-/-	1/1	
	⑧ - ϕ5, ϕ6P, ϕ8PPB	-/-	1/1	1/1	1/1	-/-	-/-	-/-	1/1	
TOTALS: 12 CONDUCTOR / 3 CONDUCTOR		1/1	2/2	3/3	4/4	1/1	2/2	3/3	8/8	
#10	LUMINAIRES	2	2	2	2	2	2	2	-	
VIDEO DETECTION CABLE		1	1	2	2	-	1	1	4	
LOOP DETECTION CABLE (LDC) AND #8 GROUND		-	3	3	4	-	-	3	6	
EV CABLE		1	1	2	2	-	1	1	4	
6PR #19 INTERCONNECT		-	-	-	-	-	-	-	-	
12 SMFO CABLE		-	-	-	-	-	-	-	1	
CONDUIT % FILL		13	24	20	24	8	20	17	43	
CONDUIT SIZE		3"	3"	4"	4"	3"	3"	4"	2-3" E	

NOTE: ALL CONDUCTORS AND CONDUITS ARE NEW UNLESS NOTED OTHERWISE.  
E = EXISTING

4/ Revised per Addendum No. 4  
Date: April 16, 2018

CITY OF INGLEWOOD MAINTAINED  
PERCENTAGE SHARE  
100% CITY OF INGLEWOOD

REVISIONS		
MARK	DATE	DESCRIPTION
4	10-16-18	Revised per Addendum No. 4



CITY OF INGLEWOOD, CALIFORNIA  
PUBLIC WORKS DEPARTMENT

PLAN SCALE:  
NTS

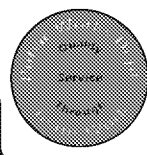
DESIGNED BY:  
DRAWN BY:  
CHECKED BY:

PROJECT TITLE:  
CENTURY BOULEVARD  
INGLEWOOD AVE TO DOTY AVE  
TRAFFIC SIGNAL PLANS - HAWTHORNE BLVD

SUBMITTED BY / APPROVED BY:

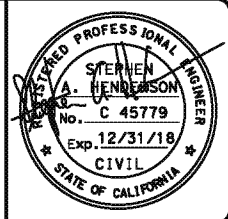
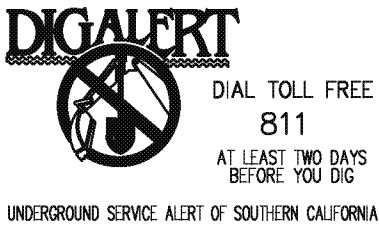
PETER PUGLIESE, RCE 81419 / CITY TRAFFIC ENGINEER

3/1/2018  
DATE



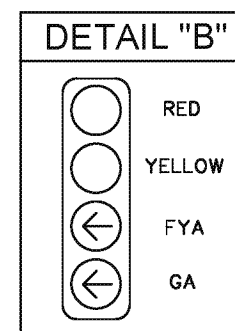
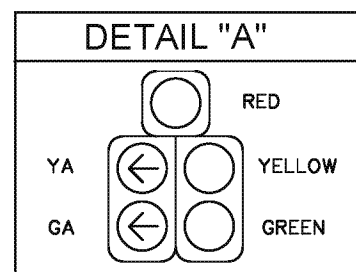
PROFILE SCALE:  
VERTICAL  
HORIZONTAL

PLAN NO.  
TS-305A  
SHEET NO.  
OF



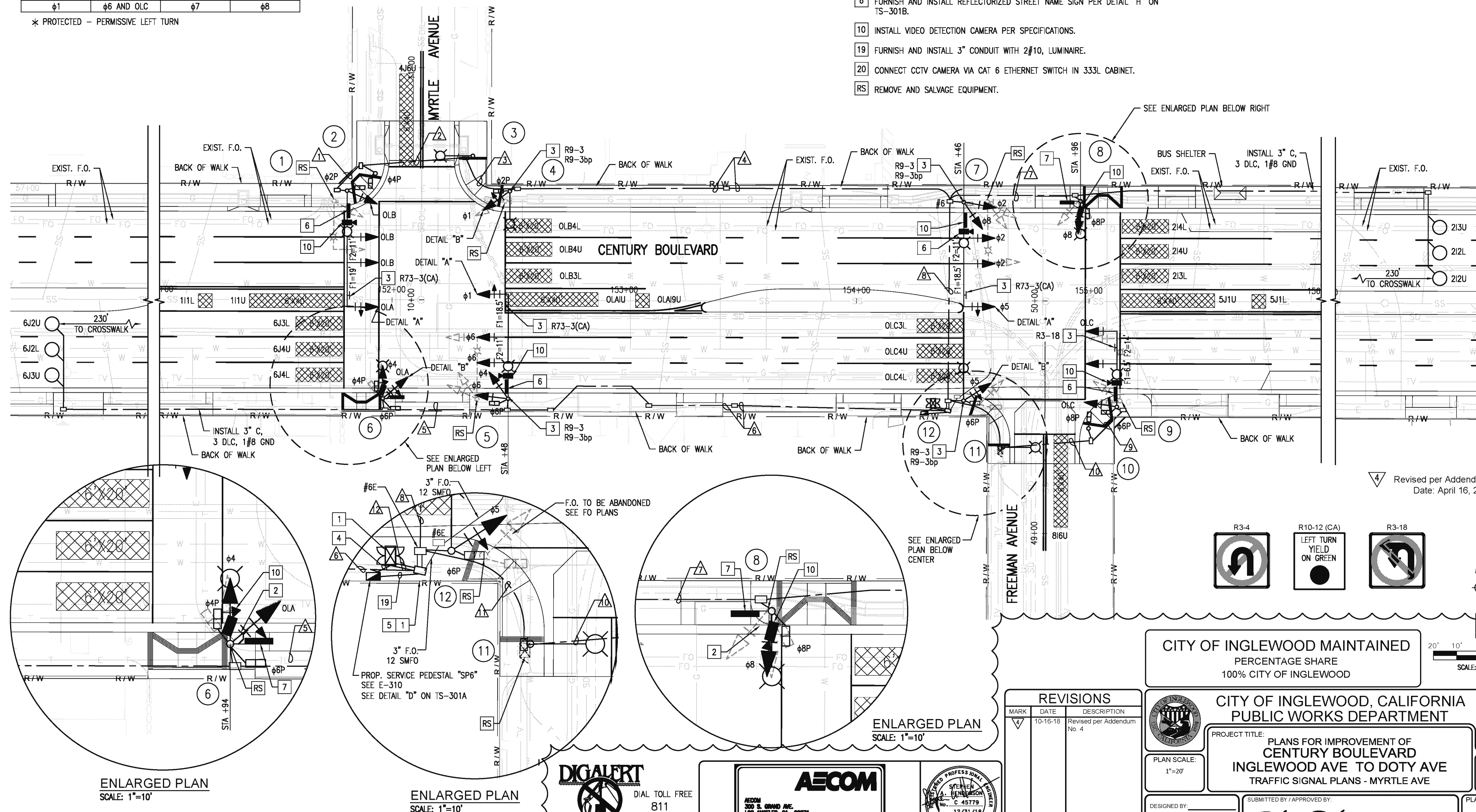
<p><math>\phi 5</math> AND OLA</p>	<p><math>\phi 2</math> AND OLB</p>	NOT USED	<p><math>\phi 4</math></p>
<p><math>\phi 1</math></p>	<p><math>\phi 6</math> AND OLC</p>	NOT USED	<p><math>\phi 8</math></p>

\* PROTECTED - PERMISSIVE LEFT TURN



- 1 FURNISH AND INSTALL TYPE 2070 ATC CONTROLLER IN TYPE 333L ALUMINUM CABINET, AND CONTROLLER ASSEMBLY PER CALTRANS TEES SPECIFICATIONS FOR 8 PHASE OPERATION. INCLUDE ALL NECESSARY ACCESSORIES TO PROVIDE INTENDED OPERATION, INCLUDING BATTERY BACKUP SYSTEM (BBS). THE BBS EQUIPMENT, INCLUDING THE BATTERIES, SHALL BE ATTACHED TO THE 333L CABINET. BBS CABINET SHALL CONTAIN UPS SYSTEM AND BATTERIES. BBS CABINET SHALL BE FURNISHED WITH A GENERATOR HOOK-UP AND SWITCH. USE CALTRANS APPROVED VENDOR LIST.
- 3 FURNISH AND INSTALL MAST ARM OR SIGNAL POLE MOUNTED SIGN AS NOTED ON PLAN, PER CALTRANS 2010 STANDARDS.
- 5 CONNECT NEW 2070 ATC CONTROLLER TO ETHERNET SWITCH IN CABINET.
- 6 FURNISH AND INSTALL REFLECTORIZED STREET NAME SIGN PER DETAIL "H" ON TS-301B.
- 10 INSTALL VIDEO DETECTION CAMERA PER SPECIFICATIONS.
- 19 FURNISH AND INSTALL 3" CONDUIT WITH 2#10, LUMINAIRE.
- 20 CONNECT CCTV CAMERA VIA CAT 6 ETHERNET SWITCH IN 333L CABINET.
- RS REMOVE AND SALVAGE EQUIPMENT.

1. REFER TO STREET LIGHTING PLANS FOR COMMON TRENCH-TYPICAL DETAIL ON PLAN NO. E-311.
2. ALL EXISTING CONDUITS NOT SHOWN FOR REUSE SHALL BE ABANDONED.
3. REFER TO FIBER OPTIC (F.O.) PLANS FOR F.O. SPECIFIC DETAILS.



4 Revised per Addendum No. 4  
Date: April 16, 2018

CITY OF INGLEWOOD MAINTAINED  
PERCENTAGE SHARE  
100% CITY OF INGLEWOOD

CITY OF INGLEWOOD, CALIFORNIA  
PUBLIC WORKS DEPARTMENT


PROJECT TITLE: PLANS FOR IMPROVEMENT OF  
CENTURY BOULEVARD  
INGLEWOOD AVE TO DOTY AVE  
TRAFFIC SIGNAL PLANS - MYRTLE AVE

DESIGNED BY: \_\_\_\_\_  
DRAWN BY: \_\_\_\_\_  
CHECKED BY: \_\_\_\_\_

SUBMITTED BY / APPROVED BY:  3/1/2018


REGISTERED PROFESSIONAL ENGINEER DATE

PLAN NO.  
TS-306  
SHEET NO.  
OF


**DIGALERT**  
  
 DIAL TOLL FREE  
 811  
 AT LEAST TWO DAYS  
 BEFORE YOU DIG  
 UNDERGROUND SERVICE ALERT OF SOUTHERN CALIFORNIA

**AECOM**

AECOM  
300 S. GRAND AVE.  
LOS ANGELES, CA 90071  
T 213.593.8100 F 213.593.8178  
[www.aecom.com](http://www.aecom.com)



REVISIONS		
MARK	DATE	DESCRIPTION
4	10-16-18	Revised per Addendum No. 4

  
 PLAN SCALE:  
 1"=20'  
 DESIGNED BY: \_\_\_\_\_  
 DRAWN BY: \_\_\_\_\_  
 CHECKED BY: \_\_\_\_\_

<h1 style="margin: 0;">CITY OF INGLEWOOD, CALIFORNIA</h1> <h2 style="margin: 0;">PUBLIC WORKS DEPARTMENT</h2>		
PROJECT TITLE:	<h3 style="margin: 0;">PLANS FOR IMPROVEMENT OF CENTURY BOULEVARD INGLEWOOD AVE TO DOTY AVE TRAFFIC SIGNAL PLANS - MYRTLE AVE</h3>	
SUBMITTED BY / APPROVED BY:		PROFILE SCALE VERTICAL  HORIZONTAL
<div style="display: flex; align-items: center;">  <div style="margin-left: 20px;"> <div style="border: 1px solid black; padding: 5px; display: inline-block;">3/1/2018</div> <div style="margin-top: 10px; font-size: small;">             OFFERED BY: [illegible] RPS R14/16 (CITY TRAFFIC ENGINEER)           </div> </div> </div>		PLAN NO.  <h2 style="margin: 0;">TS-306</h2>
<div style="display: flex; justify-content: space-between;"> <div style="font-size: small;">             OFFERED BY: [illegible] RPS R14/16 (CITY TRAFFIC ENGINEER)           </div> <div style="text-align: right;">             DATE  <b>3/1/2018</b> </div> </div>		SHEET NO. _____ OF _____

Drawing Name: P:\Projects\TRN0160803\_C859\_Inductance\CAD\Drawings\SheetProject\_3 - Inductance to DotM11 Traffic Signal Plans\CR-TS-206.dwg

POLE AND EQUIPMENT SCHEDULE																	
NO.	STANDARD				LED LUMINAIRE (3)	R.S.N.S LEGEND	SIGNAL MOUNTING			PED PUSH BUTTONS (2) SEE DETAIL "G"*			POLE LOCATION SEE DETAIL "F"*		REMARKS		
	TYPE	HEIGHT	SIGNAL M. A.	LUM. M. A.			VEHICLE		PED (1)	QUAD.	PHASE	ARROW	A	B			
							M. A.	POLE									
①	29-5-100	30'	50'	12'	196W	Myrtle	3-MAS	SV-1-T	SP-1-T	2	8	←	4'	6.4'	-		
②	1-A	7'	-	-	-	-	-	-	TP-1-T	3	2	→	5.6'	3'	-		
③	15TS	30'	-	12'	196W	-	-	-	-	3	2	←	-2'	6'	-		
④	15TS	30'	-	12'	196W	-	-	SV-1-T	SP-1-T	-	-	-	-2'	6.8'	-		
⑤	29-5-100	30'	45'	12'	196W	Myrtle	3-MAS	SV-2-TA	SP-1-T	3	6	←	**	2.5'	CCTV 45' EXTENSION		
⑥	15TS	30'	-	12'	196W	Century	-	SV-2-TA	SP-2-T	3	4	6	8	→	**	2.5'	-
⑦	29-5-100	30'	45'	12'	196W	Freman	3-MAS	SV-2-TA	-	-	-	-	**	2.5'	CCTV 45' EXTENSION		
⑧	15TS	30'	-	12'	196W	Century	-	SV-1-T	SP-1-T	2	4	←	**	3'	-		
⑨	19A-4-100	30'	35'	12'	196W	Freman	MAS	SV-1-T	SP-1-T	4	4	←	4'	5'	-		
⑩	1-A	7'	-	-	-	-	-	-	TP-1-T	1	6	←	5.2'	3'	-		
⑪	15TS	30'	-	12'	196W	-	-	-	-	1	6	→	-3'	3'	-		
⑫	15TS	30'	-	12'	196W	-	-	SV-1-T	SP-1-T	-	-	-	0'	3'	-		

ALL TRAFFIC SIGNAL EQUIPMENT IS NEW UNLESS NOTED OTHERWISE.

\* SEE SHEET TS-301B

\*\* SEE SHEET TS-306

(1) LED COUNTDOWN PEDESTRIAN SIGNAL FACE

(2) (3) ALL LUMINAIRES SHALL BE MEDIUM CUTOFF LIGHT DISTRIBUTION



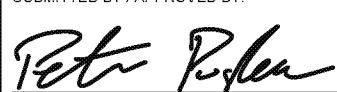
CONDUCTOR AND CONDUIT SCHEDULE													
AWG SIZE OR CABLE TYPE	POLE & PHASES	CONDUIT LOCATION											
		1	2	3	4	5	6	7	8	9	10	11	12
12 CABLE 11-#14 1-#12	① - OLA, OLB, φ2P, φ8PPB	1/1	1/1	1/1	1/1	-/-	-/-	-/-	1/1	-/-	-/-	-/-	1/1
	② - φ8P, φ2PPB	-/-	1/1	1/1	1/1	-/-	-/-	-/-	1/1	-/-	-/-	-/-	1/1
	③ - φ2PPB	-/-	-/-	-/1	-/1	-/-	-/-	-/-	-/1	-/-	-/-	-/-	-/1
	④ - φ1, φ2P	-/-	-/-	-/-	1/-	-/-	-/-	-/-	1/-	-/-	-/-	-/-	1/-
	⑤ - φ6, φ8, φ1, φ6P, φ6PPB	-/-	-/-	-/-	-/-	-/-	2/1	-/-	-/-	-/-	-/-	-/-	2/1
	⑥ - OLA, φ8, φ6P, φ8P, φ6PPB, φ8PPB	-/-	-/-	-/-	-/-	1/2	1/2	-/-	-/-	-/-	-/-	-/-	1/2
	⑦ - φ5, φ2, φ4	-/-	-/-	-/-	-/-	-/-	-/-	-/-	2/-	-/-	-/-	-/-	2/-
	⑧ - φ4, φ4P, φ8PPB	-/-	-/-	-/-	-/-	-/-	-/-	1/1	1/1	-/-	-/-	-/-	1/1
	⑨ - OLC, φ6P, φ8PPB	-/-	-/-	-/-	-/-	-/-	-/-	-/-	-/-	1/1	1/1	1/1	1/1
	⑩ - φ8P, φ6PPB	-/-	-/-	-/-	-/-	-/-	-/-	-/-	-/-	-/-	1/1	1/1	1/1
	⑪ - φ6PPB	-/-	-/-	-/-	-/-	-/-	-/-	-/-	-/-	-/-	-/-	1/-	1/-
	⑫ - φ5, φ8P	-/-	-/-	-/-	-/-	-/-	-/-	-/-	-/-	-/-	-/-	-/-	1/-
(3-#14, PPB) 3 CABLE	TOTALS: 12 CONDUCTOR / 3 CONDUCTOR	1/1	2/2	2/3	3/3	1/2	3/3	1/1	6/4	1/1	2/2	3/2	13/9
#10	LUMINAIRES	2	2	2	2	2	2	2	2	2	2	2	-
VIDEO DETECTION CABLE		1	1	1	1	1	2	1	3	1	1	1	6
LOOP DETECTION CABLE (DLC) AND #8 GROUND		-	-	-	-	-	-	3	3	-	-	-	6
EV CABLE		1	1	1	1	1	2	1	3	1	1	1	6
6PR #19 INTERCONNECT		-	-	-	-	-	-	-	-	-	-	-	-
12 SMFO CABLE		-	-	-	-	-	-	-	-	-	-	-	-
CONDUIT % FILL		13	20	21	15	19	20	17	17	13	20	24	23
CONDUIT SIZE		3"	3"	3"	4"	3"	4"	3"	2-4"	3"	3"	3"	3-4"

NOTE: ALL CONDUCTORS AND CONDUITS ARE NEW UNLESS NOTED OTHERWISE.

4/ Revised per Addendum No. 4  
Date: April 16, 2018

CITY OF INGLEWOOD MAINTAINED  
PERCENTAGE SHARE  
100% CITY OF INGLEWOOD

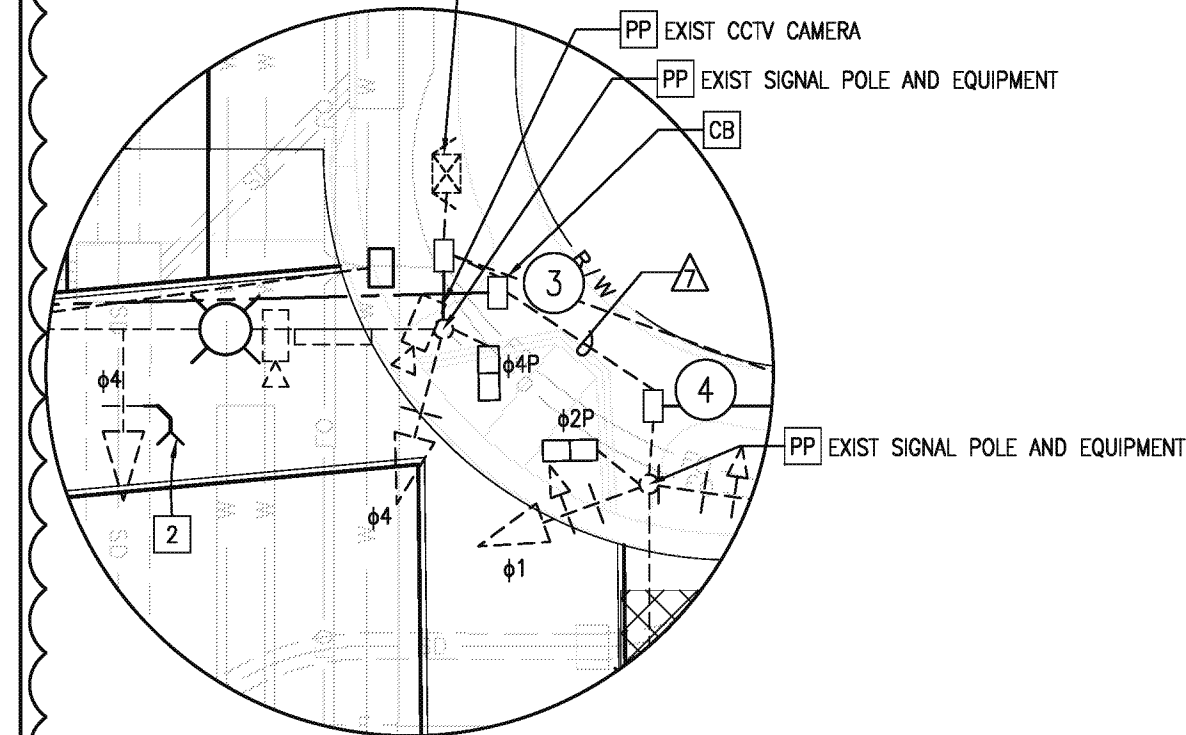
REVISIONS		
MARK	DATE	DESCRIPTION
4/	10-16-18	Revised per Addendum No. 4

	<b>CITY OF INGLEWOOD, CALIFORNIA PUBLIC WORKS DEPARTMENT</b>	
PLAN SCALE: NTS	PROJECT TITLE: <b>PLANS FOR IMPROVEMENT OF CENTURY BOULEVARD INGLEWOOD AVE TO DOTY AVE TRAFFIC SIGNAL PLANS - MYRTLE AVE</b>	PROFILE SCALE: VERTICAL HORIZONTAL
DESIGNED BY: DRAWN BY: CHECKED BY:	SUBMITTED BY / APPROVED BY:  PETER PUGLIESE, RCE 81419 / CITY TRAFFIC ENGINEER 3/1/2018 DATE	PLAN NO. <b>TS-306A</b> SHEET NO. OF

**DIGALERT**  
DIAL TOLL FREE  
811  
AT LEAST TWO DAYS  
BEFORE YOU DIG  
UNDERGROUND SERVICE ALERT OF SOUTHERN CALIFORNIA

**AECOM**  
AECOM  
300 S. GRAND AVE.  
LOS ANGELES, CA 90071  
T 213.283.8100 F 213.283.8176  
www.aecom.com

**PETER PUGLIESE**  
REGISTERED PROFESSIONAL ENGINEER  
No. 12/31/18  
CIVIL  
STATE OF CALIFORNIA



## CONSTRUCTION NOTES



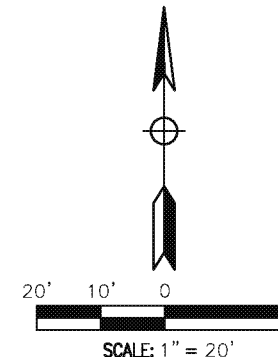
			
$\phi_1$	$\phi_2$	$\phi_3$	$\phi_4$
			
$\phi_5$	$\phi_6$	$\phi_7$	$\phi_8$

- 1 FURNISH AND INSTALL TYPE 2070 ATC CONTROLLER IN TYPE 333L ALUMINUM CABINET, AND CONTROLLER ASSEMBLY PER CALTRANS TEES SPECIFICATIONS FOR 8 PHASE OPERATION. INCLUDE ALL NECESSARY ACCESSORIES TO PROVIDE INTENDED OPERATION, INCLUDING BATTERY BACKUP SYSTEM (BBS). THE BBS EQUIPMENT, INCLUDING THE BATTERIES, SHALL BE ATTACHED TO THE 333L CABINET. BBS CABINET SHALL CONTAIN UPS SYSTEM AND BATTERIES. BBS CABINET SHALL BE FURNISHED WITH A GENERATOR HOOK-UP AND SWITCH. USE CALTRANS APPROVED VENDOR LIST.
- 2 FURNISH AND INSTALL 3M OPTICOM DETECTOR MODEL 721, 3M MODEL 138 DETECTOR CABLE PLUS TWO 3M OPTICOM 2-CHANNEL RACK MOUNTED PHASE SELECTORS, MODEL W-752 INTO CONTROLLER CABINET. OPTICOM DETECTOR SHALL BE MOUNTED ON VEHICLE SIGNAL HEAD PER CALTRANS STD PLAN ES-4E.
- 3 FURNISH AND INSTALL MAST ARM OR SIGNAL POLE MOUNTED SIGN AS NOTED ON PLAN, PER CALTRANS 2010 STANDARDS.
- 5 CONNECT NEW 2070 ATC CONTROLLER TO ETHERNET SWITCH IN CABINET.
- 6 FURNISH AND INSTALL REFLECTORIZED STREET NAME SIGN PER DETAIL "H" ON TS-301B.
- 8 EXISTING TYPE 170 CONTROLLER AND CABINET SHALL BE SALVAGED AND DELIVERED TO THE CITY YARD AFTER NEW 333L CABINET IS OPERATIONAL.
- 13 RELOCATE VIDEO DETECTION CAMERA TO NEW POLE.
- 14 ADD CCTV EXTENSION TO 45' ON POLE SHAFT.
- 16 EXISTING CONDUIT TO REMAIN.
- 19 FURNISH AND INSTALL 3" CONDUIT WITH 2#10, LUMINAIRE.
- 20 CONNECT CCTV CAMERA VIA CAT 6 ETHERNET SWITCH IN 333L CABINET.
- BC INSTALL PULL BOX IN EXISTING CONDUIT RUN.
- CB INSTALL CONDUIT INTO PULL BOX.
- RS REMOVE AND SALVAGE EQUIPMENT.

NOTES:

1. REFER TO STREET LIGHTING PLANS FOR COMMON TRENCH-TYPICAL DETAIL ON PLAN NO. E-311.
2. ALL EXISTING CONDUITS NOT SHOWN FOR REUSE SHALL BE ABANDONED.
3. ALL EXISTING PULLBOXES NOT SHOWN FOR REUSE SHALL BE REMOVED AND BECOME THE PROPERTY OF THE CONTRACTOR
4. REFER TO FIBER OPTIC (F.O.) PLANS FOR F.O. SPECIFIC DETAILS.

4 Revised per Addendum No. 4  
Date: April 16, 2018



CITY OF INGLEWOOD MAINTAINED  
PERCENTAGE SHARE  
100% CITY OF INGLEWOOD

CITY OF INGLEWOOD, CALIFORNIA  
PUBLIC WORKS DEPARTMENT

PROJECT TITLE: PLANS FOR IMPROVEMENT OF  
CENTURY BOULEVARD  
INGLEWOOD AVE TO DOTY AVE  
TRAFFIC SIGNAL PLANS - PRAIRIE AVE

PLAN SCALE  
1"=20'

DESIGNED BY: \_\_\_\_\_  
DRAWN BY: \_\_\_\_\_  
CHECKED BY: \_\_\_\_\_

SUBMITTED BY / APPROVED BY:

*Peter Pyle*  
PETER PYLE FRP, BSC, BA (HONS) TV TRAFFIC ENGINEER

3/1/2018

PLAN NO.	TS-307
SHEET NO.	OF



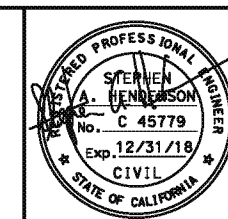
DIGALERT

DIAL TOLL FREE  
811  
AT LEAST TWO DAYS  
BEFORE YOU DIG

UNDERGROUND SERVICE ALERT OF SOUTHERN CALIFORNIA

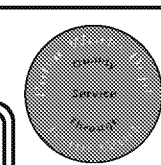
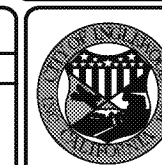
**AECOM**

**AECOM**  
300 S. GRAND AVE.  
LOS ANGELES, CA 90071  
T 213.583.8100 F 213.583.8171  
www.aecom.com



## REVISIONS

MARK	DATE	DESCRIPTION
4	10-16-18	Revised per Addendum No. 4



ST-4696

ST-4696

POLE AND EQUIPMENT SCHEDULE

NO.	STANDARD				LED LUMINAIRE (3) (4)	R. S. N. S LEGEND	SIGNAL MOUNTING			PED PUSH BUTTON (2) SEE DETAIL "G"			POLE LOCATION SEE DETAIL "F"		REMARKS
	TYPE	HEIGHT	SIGNAL M. A.	LUM. M. A.			VEHICLE		PED (1)	QUAD.	PHASE	ARROW	A	B	
							M. A.	POLE							
①	29A-5-100	35'	50'	15'	196W	Praire	3-MAS	SV-1-T	SP-1-T	2	8	←	10'	4'	-
②	21TS	35'	-	15'	196W	-	-	SV-2-TA	SP-1-T	3	2	→	13'	3'	-
③	26A-4-100 (E)	35' (E)	45' (E)	15' (E)	196W	Century	2-MAS (E)	SV-1-T (E)	SP-1-T (E)	3	2	←	EXISTING		REPLACE EXISTING 400W HPSV LUMINAIRE
④	21TS (E)	35' (E)	-	15' (E)	196W	-	-	SV-2-TA (E)	SP-1-T (E)	4	4	→	EXISTING		REPLACE EXISTING 400W HPSV LUMINAIRE
⑤	29A-5-100	35'	50'	15'	196W	Praire	3-MAS	SV-1-T	SP-1-T	4	4	←	12'	4'	CCTV EXTENSION TO 45'
⑥	21TS	35'	-	15'	196W	-	-	SV-2-TA	SP-1-T	1	6	→	13'	3'	-
⑦	26A-4-100	35'	45'	15'	196W	Century	2-MAS	SV-1-T	SP-1-T	1	6	←	11.50'	5'	-
⑧	21TS	35'	-	15'	196W	-	-	SV-2-TA	SP-1-T	2	8	→	13'	3'	-

ALL EQUIPMENT IS NEW UNLESS NOTED OTHERWISE.  
(E) = EXISTING EQUIPMENT

\* SEE SHEET TS-301B

(1) LED COUNTDOWN PEDESTRIAN SIGNAL FACE  
(2) ALL LUMINAIRES SHALL BE MEDIUM CUTOFF LIGHT DISTRIBUTION  
(3) EXISTING LUMINAIRE HEADS TO BE UPGRADED TO LED

CONDUCTOR AND CONDUIT SCHEDULE


AWG SIZE OR CABLE TYPE	POLE & PHASES	CONDUIT LOCATION								
		1	2	3	4	5	6	7	8	9
12 CABLE 11-#14 1-#12  (3-#14, PPB)  3 CABLE	① - φ5, φ2, 0LA, φ2P, φ4PPB	-/-	-/-	-/-	-/-	1/1	1/1	-/-	-/-	1/1
	② - φ7, φ8, φ8P, φ2PPB	-/-	-/-	-/-	-/-	-/-	1/1	-/-	-/-	1/1
	③ - φ7, φ4, φ4P, φ2PPB	-/-	-/-	-/-	-/-	-/-	-/-	-/-	1/1	1/1
	④ - φ1, φ2, 0LA, φ2P, φ8PPB	-/-	-/-	-/-	-/-	-/-	-/-	1/1	1/1	1/1
	⑤ - φ6, φ1, φ6P, φ8PPB	1/1	1/1	1/1	1/1	1/1	1/1	-/-	-/-	1/1
	⑥ - φ3, φ4, φ8P, φ6PPB	-/-	1/1	1/1	1/1	1/1	1/1	-/-	-/-	1/1
	⑦ - φ8, φ3, φ8P, φ6PPB	-/-	-/-	1/1	1/1	1/1	1/1	-/-	-/-	1/1
	⑧ - φ5, φ6, φ6P, φ4PPB	-/-	-/-	-/-	1/1	1/1	1/1	-/-	-/-	1/1
TOTALS: 12 CONDUCTOR / 3 CONDUCTOR		1/1	2/2	3/3	4/4	5/5	6/6	1/1	2/2	8/8
#10	LUMINAIRES	2	2	2	2	2	2	2	2	-
VIDEO DETECTION CABLE		1	1	2	2	3	3	-	1	4
LOOP DETECTION CABLE (DLC) AND #8 GROUND		-	-	-	3	3	3	6	3	-
EV CABLE		1	1	2	2	3	3	-	1	4
6PR #19 INTERCONNECT		-	-	-	-	-	-	-	-	-
72 SMFO CABLE		-	-	-	-	-	-	-	-	-
CONDUIT % FILL		13	20	18	24	27	17	43	28	39
CONDUIT SIZE		3"	3"	4"	4"	2-3"	2-4"	2-3" (E)	3"	2-3" (E)

NOTE: ALL CONDUCTORS AND CONDUITS ARE NEW UNLESS NOTED OTHERWISE.  
(E) = EXISTING

Revised per Addendum No. 4  
Date: April 16, 2018

CITY OF INGLEWOOD MAINTAINED  
PERCENTAGE SHARE  
100% CITY OF INGLEWOOD

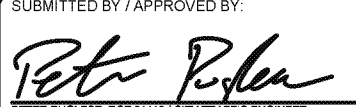
REVISIONS		
MARK	DATE	DESCRIPTION
4	10-16-18	Revised per Addendum No. 4



CITY OF INGLEWOOD, CALIFORNIA  
PUBLIC WORKS DEPARTMENT

PROJECT TITLE:  
PLANS FOR IMPROVEMENT OF  
CENTURY BOULEVARD  
INGLEWOOD AVE TO DOTY AVE  
TRAFFIC SIGNAL PLANS - PRAIRIE AVE

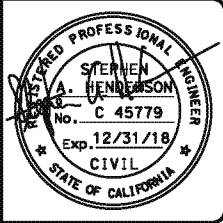
DESIGNED BY:  
DRAWN BY:  
CHECKED BY:

SUBMITTED BY / APPROVED BY:  
  
PETER PUGLIESE, RCE 81419 / CITY TRAFFIC ENGINEER

PLAN SCALE:  
NTS

PROFILE SCALE:  
VERTICAL  
HORIZONTAL

PLAN NO.  
TS-307A  
SHEET NO.  
OF



Drawing Name: R:\Projects\TRN\010863\_CBRP\_Inglewood\CD\CD\Sheet\Project 3 - Inglewood to Doty\Traffic Signal Plans\TS-307A.dwg  
Last Opened: April 16, 2018 - 11:42AM by: kummb

ST-4696

ST-4696