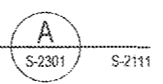


ELEVATION NOTES:

- SEE CIVIL DRAWINGS FOR SOIL GRADING INFO.
- WALL DRAINAGE SHALL BE PROVIDED WHERE SHOWN ON TRANSVERSE SECTIONS, UNLESS OTHERWISE NOTED. SEE FDN PLAN SHEETS FOR CONNECTING CROSS PIPE INFORMATION.

LONG SECT AT LINE A-SOUTH

1/8" = 1'-0"

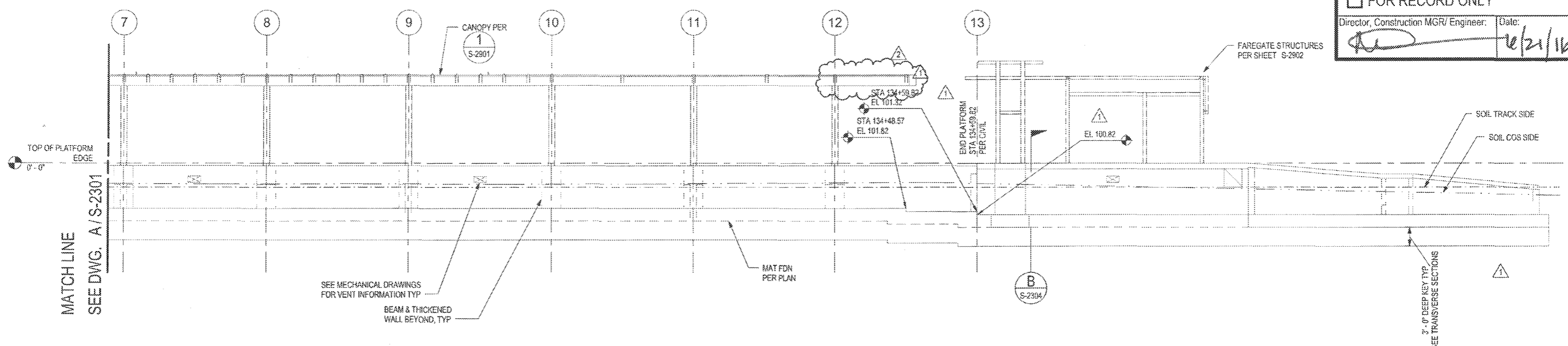


MATCH LINE
SEE DWG. B/S-2301

M Metro

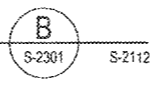
- APPROVED
- APPROVED AS NOTED (no resubmittal required)
- REJECTED, REVISE & RESUBMIT
- FOR RECORD ONLY

Director, Construction MGR/ Engineer: _____ Date: 6/21/16



LONG SECT AT LINE A-NORTH

1/8" = 1'-0"



PACKAGE A.4.H

THE PREPARATION OF THIS DRAWING HAS BEEN FINANCED IN PART THROUGH A GRANT FROM THE U.S. DEPARTMENT OF TRANSPORTATION FEDERAL TRANSIT ADMINISTRATION (FTA), UNDER THE FEDERAL TRANSIT ACT OF 1964, AS AMENDED, AND IN PART BY THE TAXES OF THE CITIZENS OF LOS ANGELES COUNTY AND OF THE STATE OF CALIFORNIA.

REV	DATE	BY	APP	REG NO	EXPIRES	SEAL HOLDER	DESCRIPTION
2	4/28/16	JAS	JL	38412	3/31/17	Jean M. Libby	NDC 86
1	3/7/16	JAS	JL	38412	3/31/17	JEAN LIBBY	NDC 064
0	5/18/15			38412	3/31/17	JEAN M. LIBBY	AFC SUBMITTAL

DESIGNED BY
JA SCHAUDER
DRAWN BY
RB HINES
CHECKED BY
TE ALLEN
IN CHARGE
JIM LIBBY
DATE
5/18/15

A SIGNED & SEALED ORIGINAL OF REV 0 OF THIS DRAWING IS MAINTAINED BY WSCC

M LOS ANGELES COUNTY METROPOLITAN TRANSPORTATION AUTHORITY
Metro

WALSH-SHEA CORRIDOR CONSTRUCTORS
1777 Oakland Blvd.
Walnut Creek, CA 94596

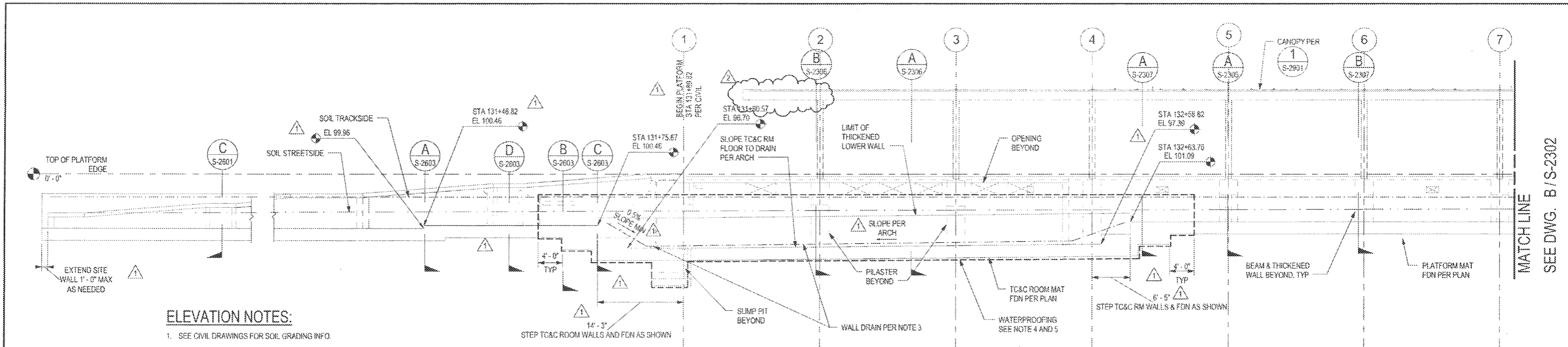
HNTB
STEVE WHITAKER
APPROVED

MARTIN & LIBBY
JEAN LIBBY
SUBMITTED

CRENSHAW/LAX
TRANSIT CORRIDOR PROJECT
FLORENCE / HINDRY STATION
LONGITUDINAL SECTION / SOUTH
ELEVATION

CONTRACT NO	C0988
DRAWING NO	S-2301
SCALE	1/8" = 1'-0"
SHEET NO	2

C:\oad\libby\lhw\hines\db\d0272707\C098862300_S14.rvt 5/18/15 10:47:15 AM



ELEVATION NOTES:

1. SEE CIVIL DRAWINGS FOR SOIL GRADING INFO.
2. WALL DRAINAGE SHALL BE PROVIDED WHERE SHOWN ON TRANSVERSE SECTIONS, UNLESS OTHERWISE NOTED. SEE FDN PLAN SHEETS FOR CONNECTING CROSS PIPE INFORMATION.
3. ADDL WALL DRAIN AT TC&C ROOM PER TRANSVERSE SECTIONS. SLOPE DRAIN TOWARDS & CONNECT TO CROSS PIPE DRAINING TO VAULT/SUMP. PENETRATION THROUGH TC&C ROOM WALL SHALL CONFORM TO DETAILS ON METRO STD SHEET MS-011. REFER TO STRUCTURAL SHEET S-G-205 FOR INFO REGARDING REINF AT PENETRATIONS.
4. WATER PROOFING SHALL EXTEND 4'-0" BEYOND TC&C ROOM STEPPED MAT FDN AS SHOWN. FOR VERTICAL EXTENTS OF WATERPROOFING SEE TRANSVERSE SECTIONS AT TC&C ROOM.
5. WATERSTOPS ARE REQD AT CONSTRUCTION JOINTS WITHIN LIMITS OF WATERPROOFING, TYP.

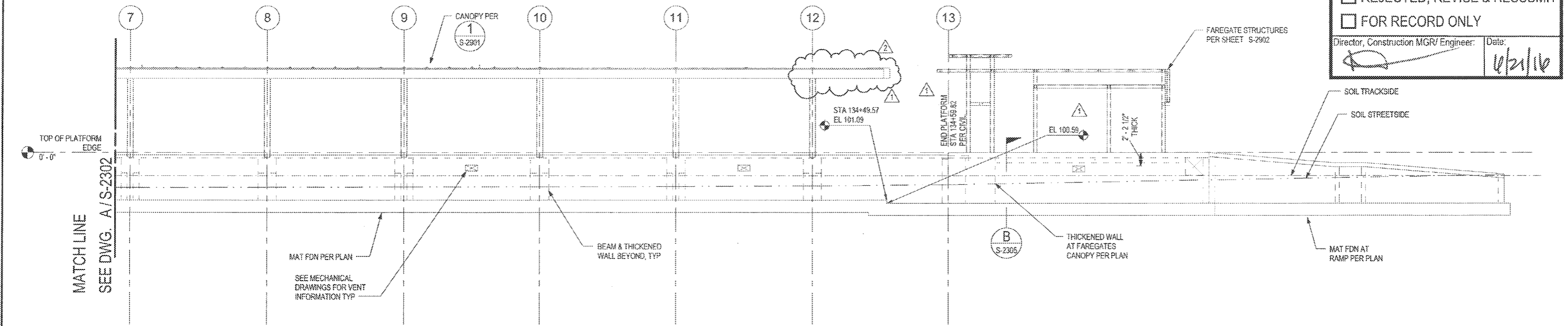
LONG SECT AT LINE B - SOUTH

1/8" = 1'-0" A S-2302 S-2111

M Metro

- APPROVED
- APPROVED AS NOTED (no resubmittal required)
- REJECTED, REVISE & RESUBMIT
- FOR RECORD ONLY

Director, Construction MGR/ Engineer: _____ Date: 4/21/16



LONG SECT AT LINE B - NORTH

1/8" = 1'-0" B S-2302 S-2111

PACKAGE A.4.H

THE PREPARATION OF THIS DRAWING HAS BEEN FINANCED IN PART THROUGH A GRANT FROM THE U.S. DEPARTMENT OF TRANSPORTATION, FEDERAL TRANSIT ADMINISTRATION (FTA), UNDER THE FEDERAL TRANSIT ACT OF 1964, AS AMENDED, AND IN PART BY THE TAXES OF THE CITIZENS OF LOS ANGELES COUNTY AND OF THE STATE OF CALIFORNIA

REV	DATE	BY	APP	REG NO	EXPIRES	SEAL HOLDER	DESCRIPTION
2	4/29/16	JAS	JL	38412	3/31/17	Jean M. Libby	NDC 86
1	3/7/16	JAS	JL	38412	3/31/17	JEAN LIBBY	NDC 064
0	5/18/15			38412	3/31/17	JEAN M. LIBBY	AFC SUBMITTAL

DESIGNED BY
JA SCHAUDER

DRAWN BY
RB HINES

CHECKED BY
TE ALLEN

IN CHARGE
JIM LIBBY

DATE
5/18/15

A SIGNED & SEALED ORIGINAL OF REV 0 OF THIS DRAWING IS MAINTAINED BY WSCC

M Metro LOS ANGELES COUNTY METROPOLITAN TRANSPORTATION AUTHORITY

WALSH-SHEA CORRIDOR CONSTRUCTORS
1777 Oakland Blvd.
Walnut Creek, CA 94596

HNTB
STEVE WHITAKER
APPROVED

MARTIN & LIBBY
JEAN LIBBY
SUBMITTED

CRENSHAW/LAX
TRANSIT CORRIDOR PROJECT
FLORENCE / HINDRY STATION
LONGITUDINAL SECTION / SOUTH
ELEVATION

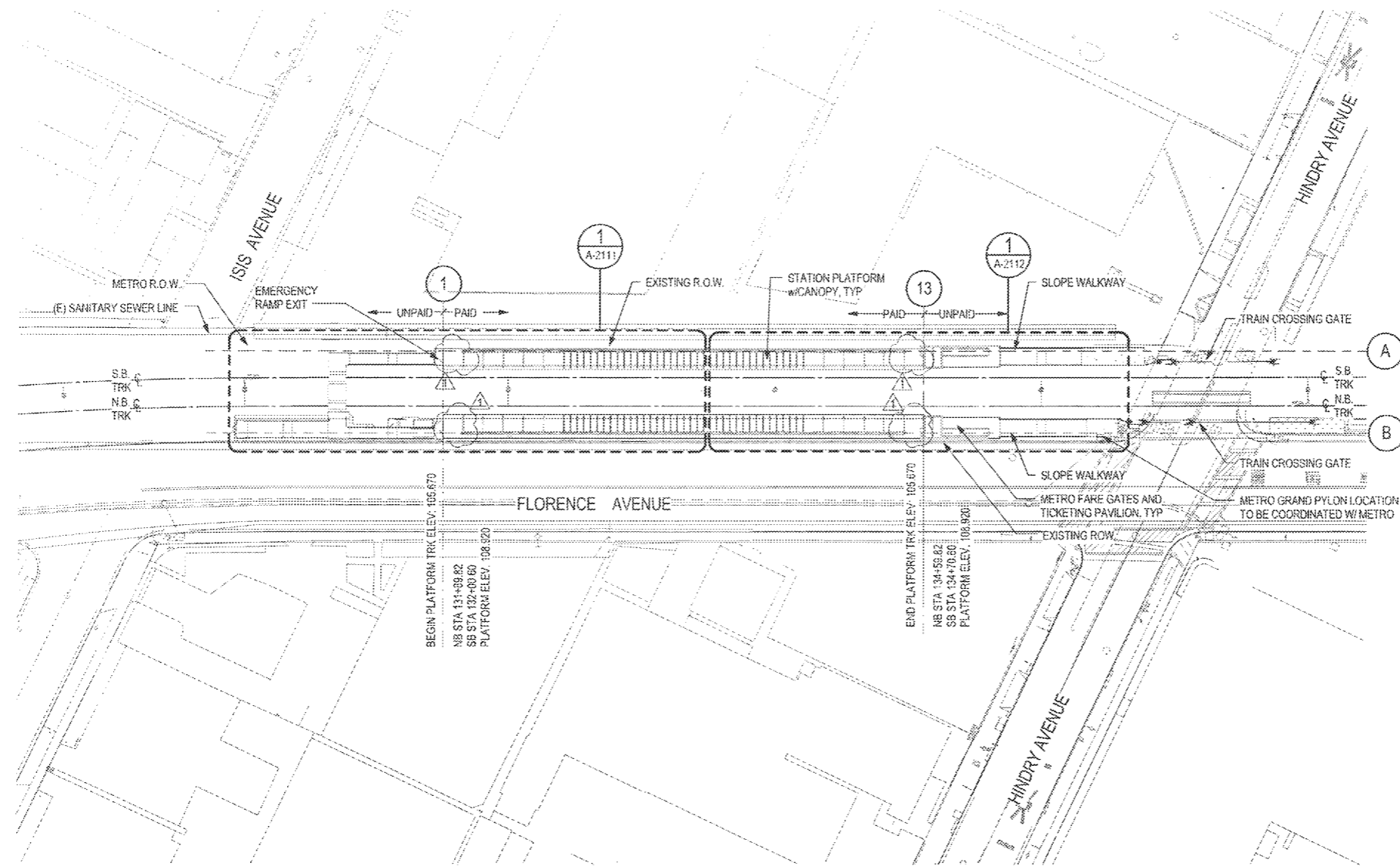
CONTRACT NO. C0988

DRAWING NO. S-2302

SCALE: 1/8" = 1'-0"

SHEET NO. 2

C:\card\libby\p4\hntb\metrolib\027270\C0988\0300_514.rvt 5/5/2016 10:47:21 AM



SITE PLAN

1" = 40'-0"



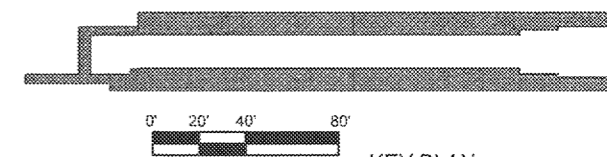
M Metro

- APPROVED
- APPROVED AS NOTED (no resubmittal required)
- REJECTED, REVISE & RESUBMIT
- FOR RECORD ONLY

Director, Construction MGR/ Engineer: _____ Date: 4/21/16



REGISTERED PROFESSIONAL ARCHITECT CERTIFIES REVISION 1 ONLY



KEY PLAN

PACKAGE A.4.H

THE PREPARATION OF THIS DRAWING HAS BEEN FINANCED IN PART THROUGH A GRANT FROM THE U.S. DEPARTMENT OF TRANSPORTATION, FEDERAL TRANSIT ADMINISTRATION (FTA), UNDER THE FEDERAL TRANSIT ACT OF 1964, AS AMENDED, AND IN PART BY THE TAXES OF THE CITIZENS OF LOS ANGELES COUNTY AND OF THE STATE OF CALIFORNIA.

REV	DATE	BY	APP	REG NO	EXPIRES	SEAL HOLDER	DESCRIPTION
1	4/20/16	PAH	RP	C34273	11/30/17	[Signature]	NDC 086
0	5/18/15			C25553	3/31/17	E. SANCHEZ	AFC SUBMITTAL

DESIGNED BY
E. SANCHEZ
DRAWN BY
R. RESURRECCION
CHECKED BY
S. SOGHOMONIAN
IN CHARGE
E. SANCHEZ
DATE
5/18/15

A SIGNED & SEALED ORIGINAL OF REV 0 OF THIS DRAWING IS MAINTAINED BY WSCC

M Metro LOS ANGELES COUNTY METROPOLITAN TRANSPORTATION AUTHORITY

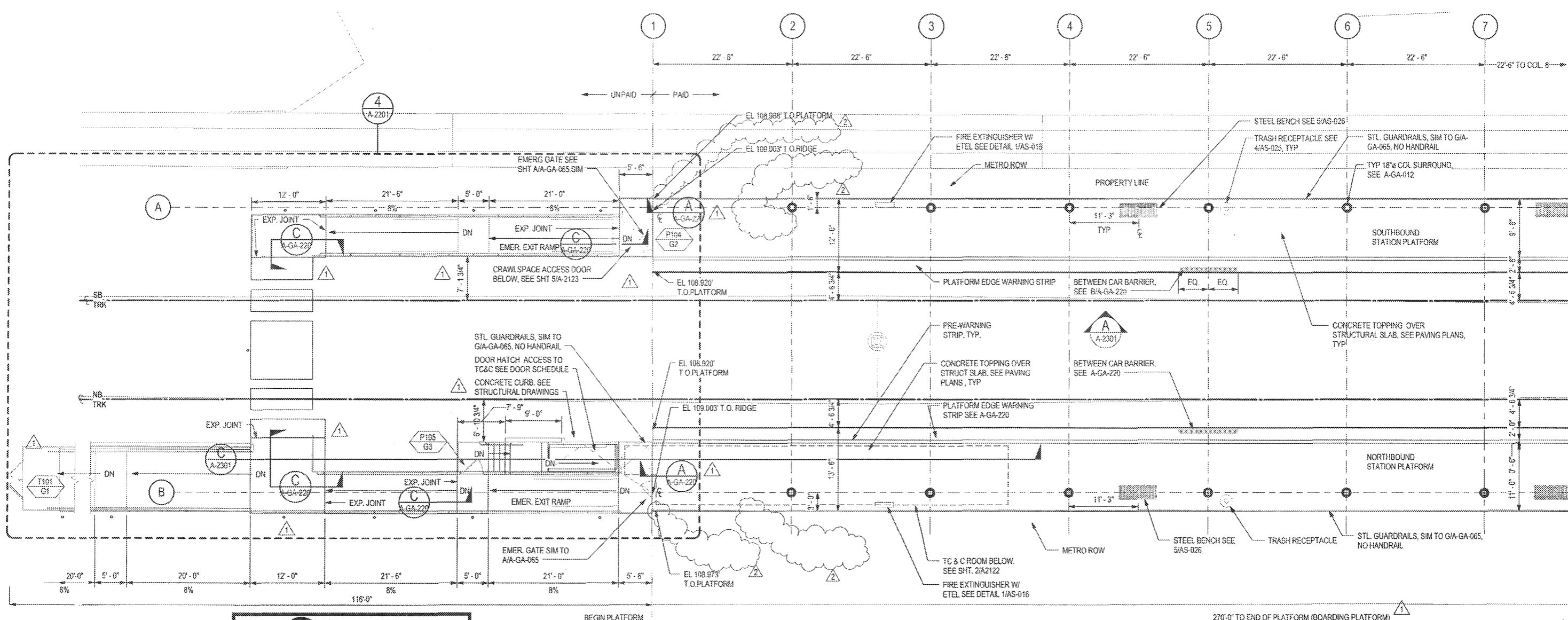
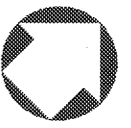
WALSH-SHEA CORRIDOR CONSTRUCTORS
1777 Oakland Blvd.
Walnut Creek, CA 94596

HNTB
STEVE WHITAKER APPROVED

RAM
EFRAIN SANCHEZ SUBMITTED

CRENSHAW/LAX
TRANSIT CORRIDOR PROJECT
FLORENCE / HINDRY STATION
SITE PLAN

CONTRACT NO. C0988	REV 1
DRAWING NO. A-2001	
SCALE 1" = 40'-0"	
SHEET NO.	



M Metro

APPROVED

APPROVED AS NOTED
(no resubmittal required)

REJECTED, REVISE & RESUBMIT

FOR RECORD ONLY

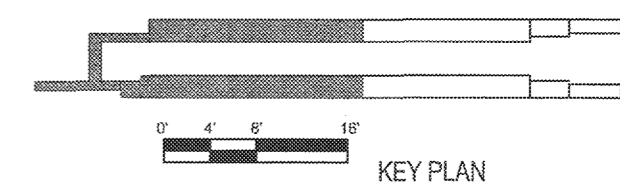
Director, Construction MGR/ Engineer: *[Signature]* Date: 6/21/16



PARTIAL PLATFORM PLAN

1/8" = 1'-0"

1
A-2111 A-2001



PACKAGE A 4.H

THE PREPARATION OF THIS DRAWING HAS BEEN FINANCED IN PART THROUGH A GRANT FROM THE U.S. DEPARTMENT OF TRANSPORTATION, FEDERAL TRANSIT ADMINISTRATION (FTA), UNDER THE FEDERAL TRANSIT ACT OF 1964, AS AMENDED, AND IN PART BY THE TAXES OF THE CITIZENS OF LOS ANGELES COUNTY AND OF THE STATE OF CALIFORNIA.

REV	DATE	BY	APP	RES NO	EXPIRES	SEAL HOLDER	DESCRIPTION
A	4/29/16	AH	RP	C34273	11/30/17	[Signature]	NDC 086
B	3/7/16	ES	ES	C25553	3/31/17	E. SANCHEZ	NDC 084
D	5/18/15			C25553	3/31/17	E. SANCHEZ	AFC SUBMITTAL

DESIGNED BY: E. SANCHEZ
 DRAWN BY: R. RESURRECCION
 CHECKED BY: S. SOGHOMONIAN
 IN CHARGE: E. SANCHEZ
 DATE: 5/18/15

A SIGNED & SEALED ORIGINAL OF REV 0 OF THIS DRAWING IS MAINTAINED BY WSCC

M LOS ANGELES COUNTY METROPOLITAN TRANSPORTATION AUTHORITY

Metro

WALSH-SHEA CORRIDOR CONSTRUCTORS
 1777 Oakland Blvd.
 Walnut Creek, CA 94596

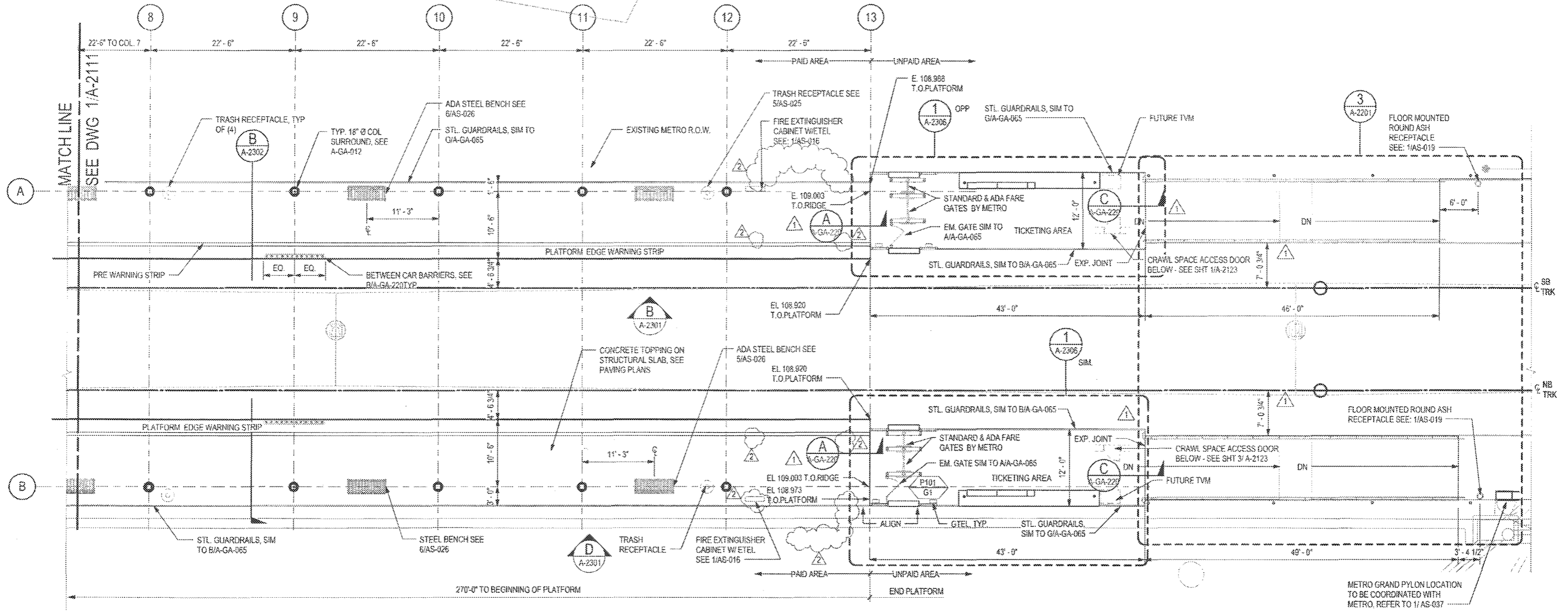
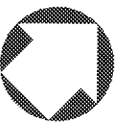
HNTB
 STEVE WHITAKER
 APPROVED

ARM
 EFRAIN SANCHEZ
 SUBMITTED

CRENSHAW/LAX TRANSIT CORRIDOR PROJECT
FLORENCE / HINDRY STATION
PLATFORM LEVEL PLAN 1 OF 2

CONTRACT NO. C0988	REV 2
DRAWING NO. A-2111	SCALE 1/8" = 1'-0"
SHEET NO.	

C:\Users\stevens\Documents\C0988a2000_a14_ahavans.rvt 05-May-16 4:26:37 PM



M Metro

APPROVED

APPROVED AS NOTED
(no resubmittal required)

REJECTED, REVISE & RESUBMIT

FOR RECORD ONLY

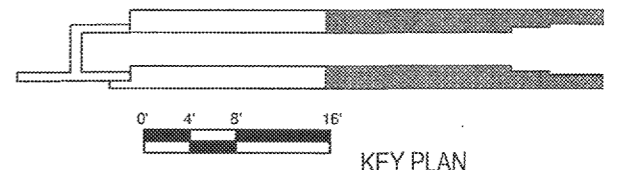
Director, Construction MGR/Engineer: _____ Date: 6/21/17



PARTIAL PLATFORM PLAN

1/8" = 1'-0"

1 A-2112 A-2001



PACKAGE A.4.H

THE PREPARATION OF THIS DRAWING HAS BEEN FINANCED IN PART THROUGH A GRANT FROM THE U.S. DEPARTMENT OF TRANSPORTATION, FEDERAL TRANSIT ADMINISTRATION (FTA), UNDER THE FEDERAL TRANSIT ACT OF 1964, AS AMENDED, AND IN PART BY THE TAXES OF THE CITIZENS OF LOS ANGELES COUNTY AND OF THE STATE OF CALIFORNIA.

REV	DATE	BY	APP	REQ NO	EXPIRES	SEAL HOLDER	DESCRIPTION
1	4/29/16	PH	RP	C34273	11/30/17	[Signature]	NDC 086
2	3/7/16	ES	ES	C25563	3/31/17	E. SANCHEZ	NDC 084
3	5/18/15			C25553	3/31/17	E. SANCHEZ	AFC SUBMITTAL

DESIGNED BY
E. SANCHEZ

DRAWN BY
R. RESURRECCION

CHECKED BY
S. SOGHOMONIAN

IN CHARGE
E. SANCHEZ

DATE
5/18/15

A SIGNED & SEALED ORIGINAL OF REV 0 OF THIS DRAWING IS MAINTAINED BY WSCC

M Metro LOS ANGELES COUNTY METROPOLITAN TRANSPORTATION AUTHORITY

WALSH-SHEA CORRIDOR CONSTRUCTORS

1777 Oakland Blvd
Walnut Creek, CA 94596

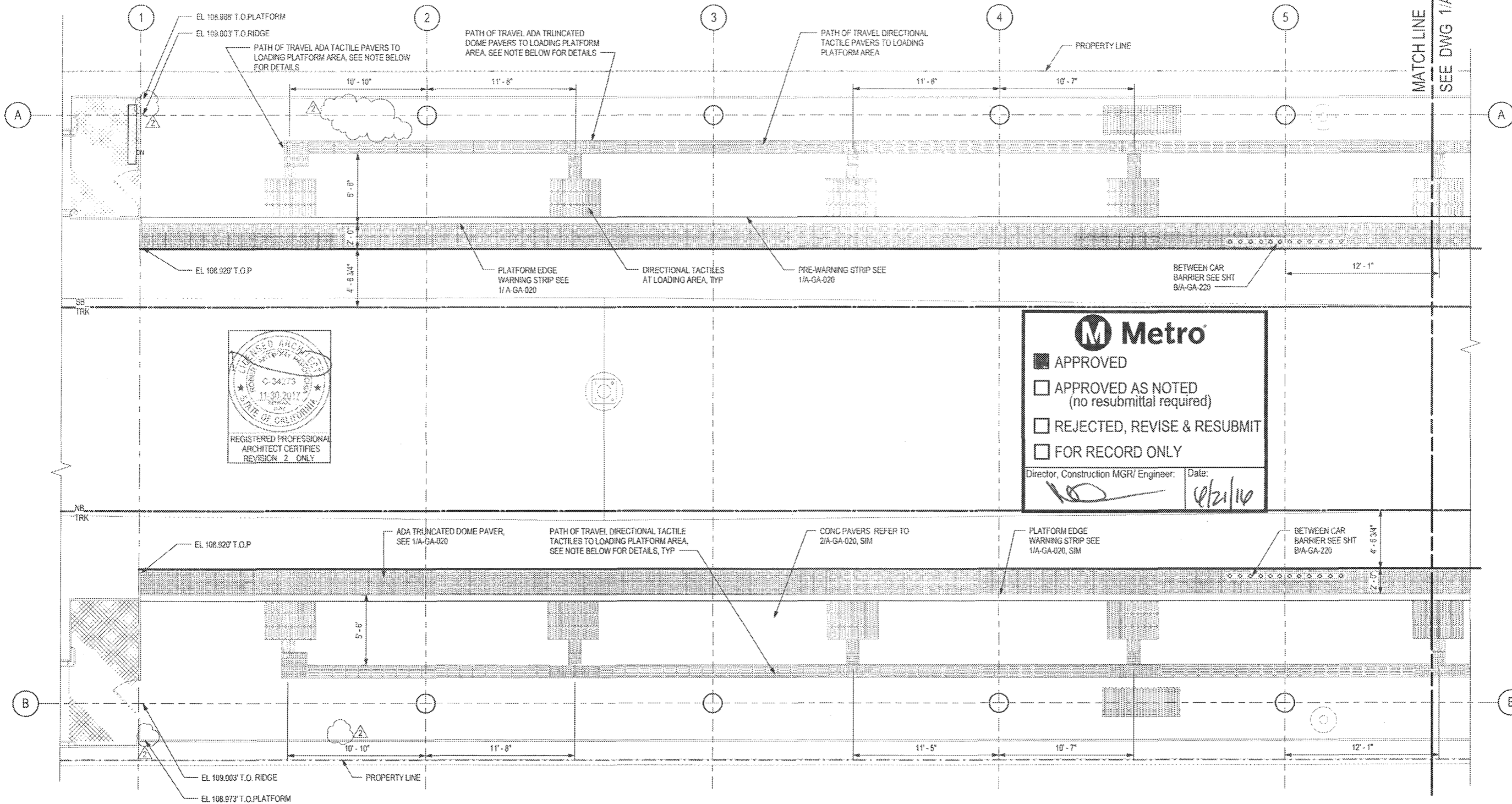
HNTB STEVE WHITAKER APPROVED

MIRM EFRAIN SANCHEZ SUBMITTED

CRENSHAW/LAX TRANSIT CORRIDOR PROJECT
FLORENCE / HINDRY STATION
PLATFORM LEVEL PLAN 2 OF 2

CONTRACT NO. C0988
DRAWING NO. A-2112
SCALE 1/8" = 1'-0"
SHEET NO. 2

C:\Users\ahavens\Documents\C0988a2000_a14_ahavens.rvt 05-May-16 4:31:38 PM



LEGEND

- SEALED CONCRETE
- 1' X 1' TRUNCATED DOME PATTERN ADA TACTILE. REFER TO SHT AS-038 & AS-039 FOR DETAILS
- 1' X 1' DIRECTIONAL BAR PATTERN ADA TACTILE. REFER TO SHT AS-038 & AS-039 FOR DETAILS

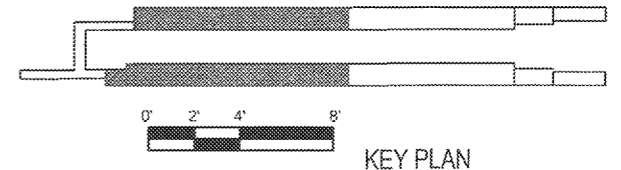
NOTE

2 COLOR ARCHITECTURAL TOPPING SLAB PATTERN NOT RELEASED FOR CONSTRUCTION, TO BE APPROVED BY METRO THROUGH NDC.

PARTIAL PAVING PLAN

1/4" = 1'-0"

1
A-2152 A-2123



PACKAGE A.4.H

THE PREPARATION OF THIS DRAWING HAS BEEN FINANCED IN PART THROUGH A GRANT FROM THE U.S. DEPARTMENT OF TRANSPORTATION, FEDERAL TRANSIT ADMINISTRATION (FTA), UNDER THE FEDERAL TRANSIT ACT OF 1964, AS AMENDED, AND IN PART BY THE TAXES OF THE CITIZENS OF LOS ANGELES COUNTY AND OF THE STATE OF CALIFORNIA.

REV	DATE	BY	APP	REG NO	EXPIRES	SEAL HOLDER	DESCRIPTION
1	4/29/16	PH	RP	C34273	11/30/17	[Signature]	NDC 086
2	3/7/16	ES	ES	C25553	3/31/17	E. SANCHEZ	NDC 064
3	5/18/15			C25553	3/31/17	E. SANCHEZ	AFC SUBMITTAL

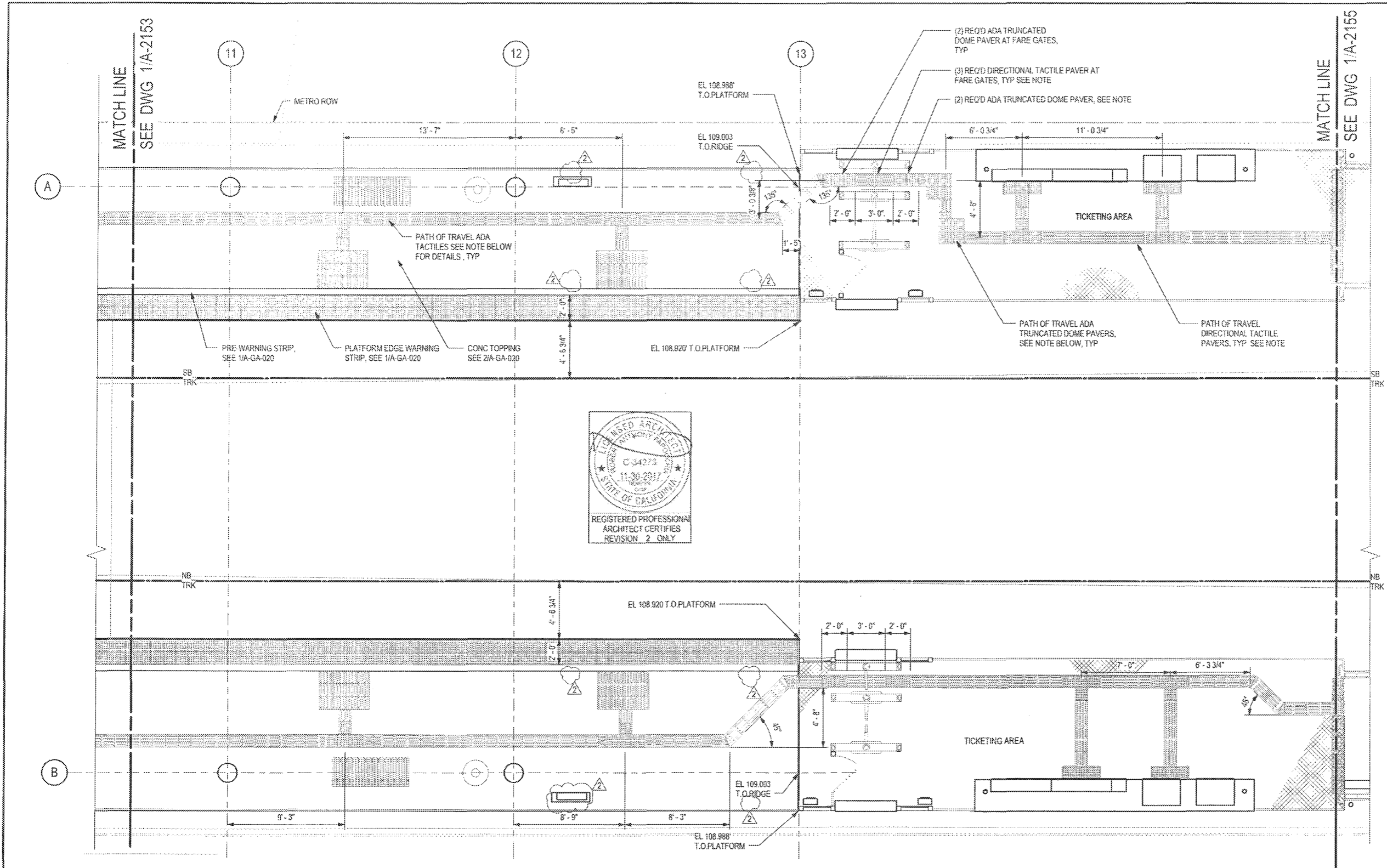
DESIGNED BY
E. SANCHEZ
DRAWN BY
R. RESURRECCION
CHECKED BY
S. SOGHOMONIAN
IN CHARGE
E. SANCHEZ
DATE
5/18/15

A SIGNED & SEALED ORIGINAL OF REV 0 OF THIS DRAWING IS MAINTAINED BY WSSC

M Metro LOS ANGELES COUNTY METROPOLITAN TRANSPORTATION AUTHORITY
WALSH-SHEA CORRIDOR CONSTRUCTORS 1777 Oakland Blvd. Walnut Creek, CA 94596
HNTB STEVE WHITAKER APPROVED
M&M EFRAIN SANCHEZ SUBMITTED

CRENSHAW/LAX TRANSIT CORRIDOR PROJECT
FLORENCE / HINDRY STATION
PAVING PLAN 1 OF 4

CONTRACT NO	C0988
DRAWING NO	A-2152
SCALE	1/4" = 1'-0"
SHEET NO	2



M Metro

- APPROVED
- APPROVED AS NOTED (no resubmittal required)
- REJECTED, REVISE & RESUBMIT
- FOR RECORD ONLY

Director, Construction MGR/ Engineer: *[Signature]* Date: 4/21/16

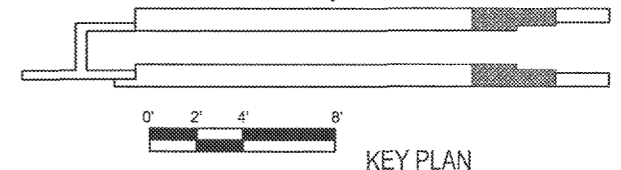
LEGEND

	SEALED CONCRETE
	1' X 1' TRUNCATED DOME PATTERN ADA TACTILE. REFER TO SHT AS-036 & AS-039 FOR DETAILS
	1' X 1' DIRECTIONAL BAR PATTERN ADA TACTILE. REFER TO SHT AS-036 & AS-039 FOR DETAILS

NOTE

2 COLOR ARCHITECTURAL TOPPING SLAB PATTERN NOT RELEASED FOR CONSTRUCTION, TO BE APPROVED BY METRO THROUGH NDC.

PARTIAL PAVING PLAN
1/4" = 1'-0"



THE PREPARATION OF THIS DRAWING HAS BEEN FINANCED IN PART THROUGH A GRANT FROM THE U.S. DEPARTMENT OF TRANSPORTATION, FEDERAL TRANSIT ADMINISTRATION (FTA), UNDER THE FEDERAL TRANSIT ACT OF 1964, AS AMENDED, AND IN PART BY THE TAXES OF THE CITIZENS OF LOS ANGELES COUNTY AND OF THE STATE OF CALIFORNIA.

REV	DATE	BY	APP	REG NO	EXPIRES	SEAL HOLDER	DESCRIPTION
1	4/28/16	AH	RP	C34273	11/30/17	[Signature]	NDC 086
2	3/7/16	E.S.	E.S.	C25563	3/31/17	E. SANCHEZ	NDC 064
0	5/18/15			C25563	3/31/17	E. SANCHEZ	AFC SUBMITTAL

DESIGNED BY: E. SANCHEZ
 DRAWN BY: R. RESURRECCION
 CHECKED BY: S. SOGHOMONIAN
 IN CHARGE: E. SANCHEZ
 DATE: 5/18/15

A SIGNED & SEALED ORIGINAL OF REV 0 OF THIS DRAWING IS MAINTAINED BY WSSC

M LOS ANGELES COUNTY METROPOLITAN TRANSPORTATION AUTHORITY

Metro

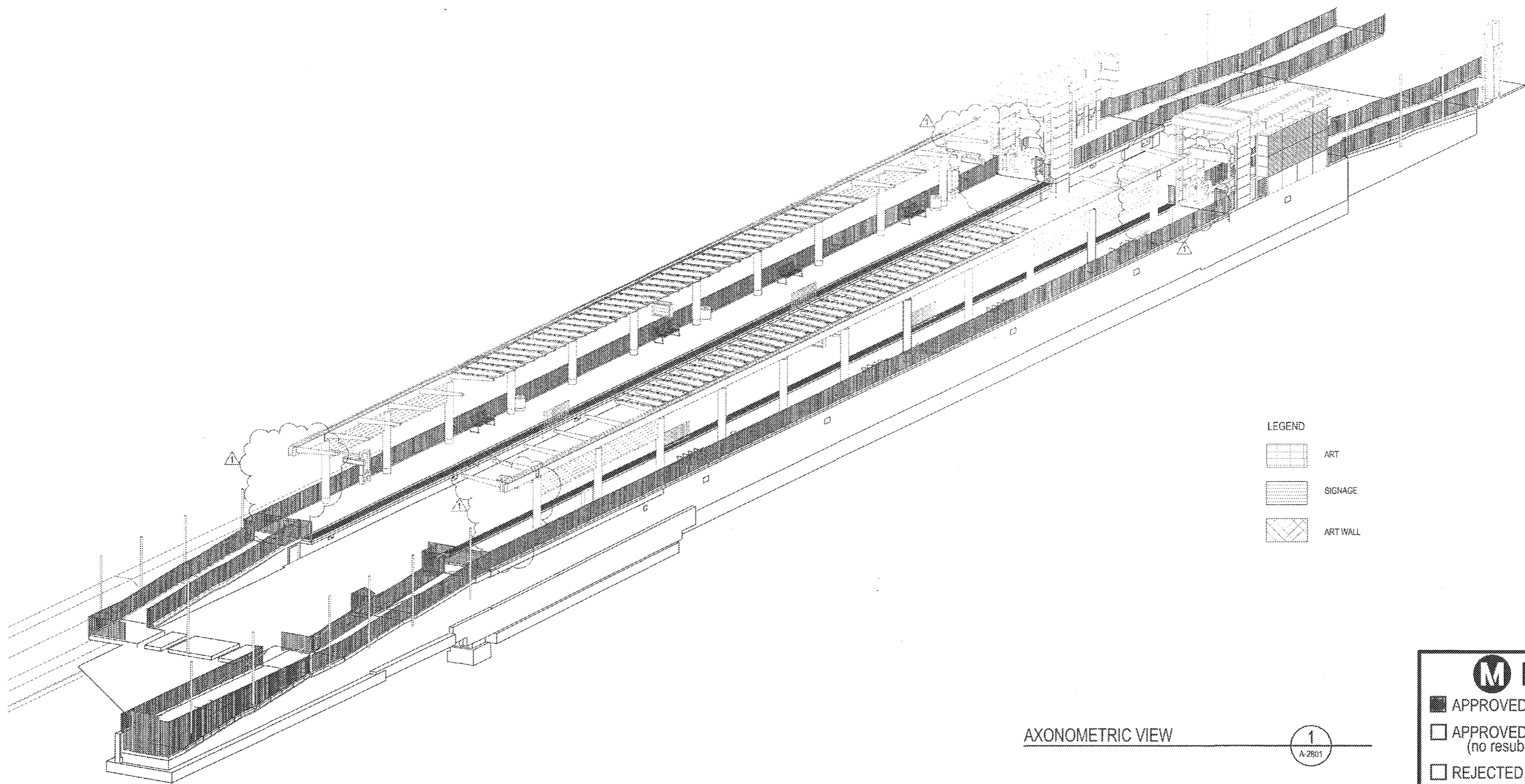
WALSH-SHEA CORRIDOR CONSTRUCTORS
1777 Oakland Blvd.
Walnut Creek, CA 94596

HNTB
STEVE WHITAKER
APPROVED

MM
EFRAIN SANCHEZ
SUBMITTED

CRENSHAW/LAX
TRANSIT CORRIDOR PROJECT
FLORENCE / HINDRY STATION
PAVING PLAN 3 OF 4

CONTRACT NO.	C0988
DRAWING NO.	A-2154
SCALE	1/4" = 1'-0"
SHEET NO.	2



- LEGEND
- ART
 - SIGNAGE
 - ART WALL

AXONOMETRIC VIEW 1
A-2801

M Metro

APPROVED

APPROVED AS NOTED
(no resubmittal required)

REJECTED, REVISE & RESUBMIT

FOR RECORD ONLY

Director, Construction MGR/ Engineer: Date: 6/21/16

PACKAGE A.4.H



REGISTERED PROFESSIONAL ARCHITECT CERTIFIES REVISION 1 ONLY

A SIGNED & SEALED ORIGINAL OF REV 0 OF THIS DRAWING IS MAINTAINED BY WSCC

M Metro LOS ANGELES COUNTY METROPOLITAN TRANSPORTATION AUTHORITY

WALSH-SHEA CORRIDOR CONSTRUCTORS 1777 Oakland Blvd. Walnut Creek, CA 94596

HNTB STEVE WHITAKER APPROVED

MAM EFRAIN SANCHEZ SUBMITTED

CRENSHAW/LAX
TRANSIT CORRIDOR PROJECT
FLORENCE / HINDRY STATION
AXONOMETRIC VIEW - PLATFORM LEVEL

CONTRACT NO. C0988
DRAWING NO. A-2801
SCALE NO SCALE
SHEET NO.

THE PREPARATION OF THIS DRAWING HAS BEEN FINANCED IN PART THROUGH A GRANT FROM THE U.S. DEPARTMENT OF TRANSPORTATION, FEDERAL TRANSIT ADMINISTRATION (FTA), UNDER THE FEDERAL TRANSIT ACT OF 1964, AS AMENDED, AND IN PART BY THE TAXES OF THE CITIZENS OF LOS ANGELES COUNTY AND OF THE STATE OF CALIFORNIA.

REV	DATE	BY	APP	REG NO	EXPIRES	SEAL HOLDER	DESCRIPTION
1	4/29/16	AH	RP	C34273	11/30/17		NDC 086
0	5/18/15			C25553	3/31/17	E. SANCHEZ	AFC SUBMITTAL

DESIGNED BY E. SANCHEZ
DRAWN BY R. RESURRECCION
CHECKED BY S. SOGHOMONIAN
IN CHARGE E. SANCHEZ
DATE 5/18/15