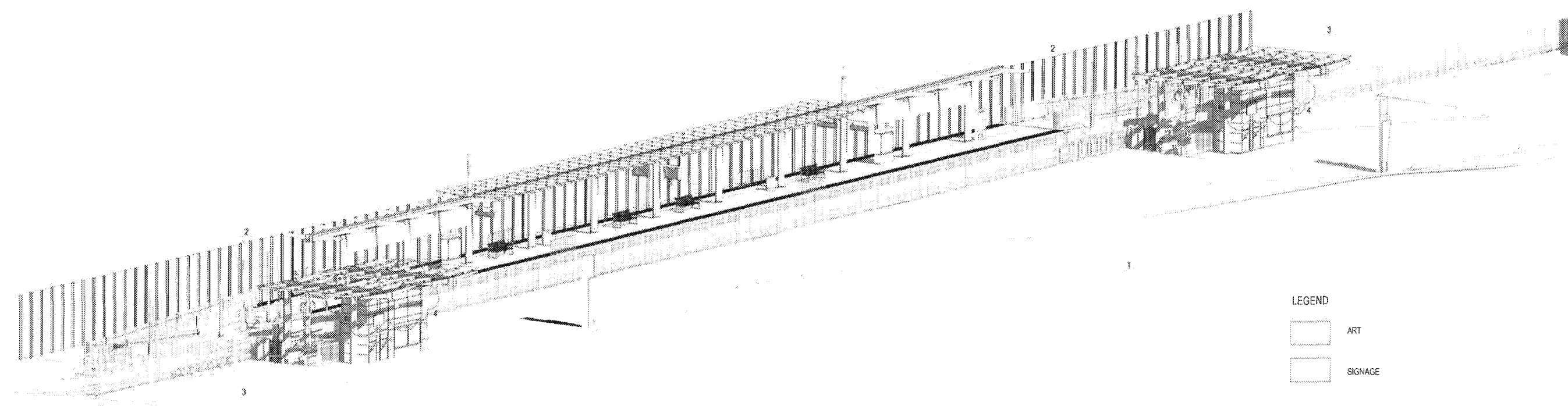


**CRENSHAW/LAX TRANSIT CORRIDOR
DESIGN/BUILD**

- APPROVED
- APPROVED AS NOTED,
NO RESUBMITTAL REQUIRED
- REJECTED, REVISE AND RESUBMIT
- RECORD ONLY

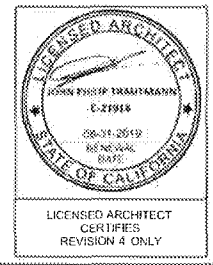
Director, Construction MGR / Engineer: *Mark Henderson* Date: 4/19/18



- LEGEND
- ART
 - SIGNAGE

AXONOMETRIC VIEW

1
A-3801



PACKAGE B-1.4

THE PREPARATION OF THIS DRAWING HAS BEEN FINANCED IN PART THROUGH A GRANT FROM THE U.S. DEPARTMENT OF TRANSPORTATION FEDERAL TRANSIT ADMINISTRATION (FTA) UNDER THE FEDERAL TRANSIT ACT OF 1964, AS AMENDED, AND IN PART BY THE TAXES OF THE CITIZENS OF LOS ANGELES COUNTY AND OF THE STATE OF CALIFORNIA.

REV	DATE	BY	APP	ISS NO	EXPIRES	SIGNAL NUMBER	DESCRIPTION
4	7/24/17	SL	JPT	C21914	8/31/19		NDC 334
3	12/8/16	JT	JT	C21914	8/31/17		NDC 190
2	4/29/16	AH	RP	C34273	11/30/17		NDC 086
1	3/11/16	AH	RP	C34273	11/30/17		NDC 081
0	5/21/15			C25553	3/31/17		AFC SUBMITTAL

DESIGNED BY
E. SANCHEZ

DRAWN BY
R. RESURRECCION

CHECKED BY
S. SOGHOMONIAN

IN CHARGE
E. SANCHEZ

DATE
5/21/15

A SIGNED & SEALED ORIGINAL OF REV 0 OF THIS DRAWING IS MAINTAINED BY WSCC

M LOS ANGELES COUNTY METROPOLITAN TRANSPORTATION AUTHORITY
Metro

WALSH-SHEA CORRIDOR CONSTRUCTORS

1777 Oakland Blvd.
Walnut Creek CA 94596

HNTB
STEVE WHITAKER

FRAM
EFRAIN SANCHEZ

CONTRACT NO. C0988

CRENSHAW/LAX
TRANSIT CORRIDOR PROJECT
FLORENCE / LA BREA STATION
AXONOMETRIC VIEW - PLATFORM LEVEL

DRAWING NO. A-3801
SCALE NO SCALE
SHEET NO. 4