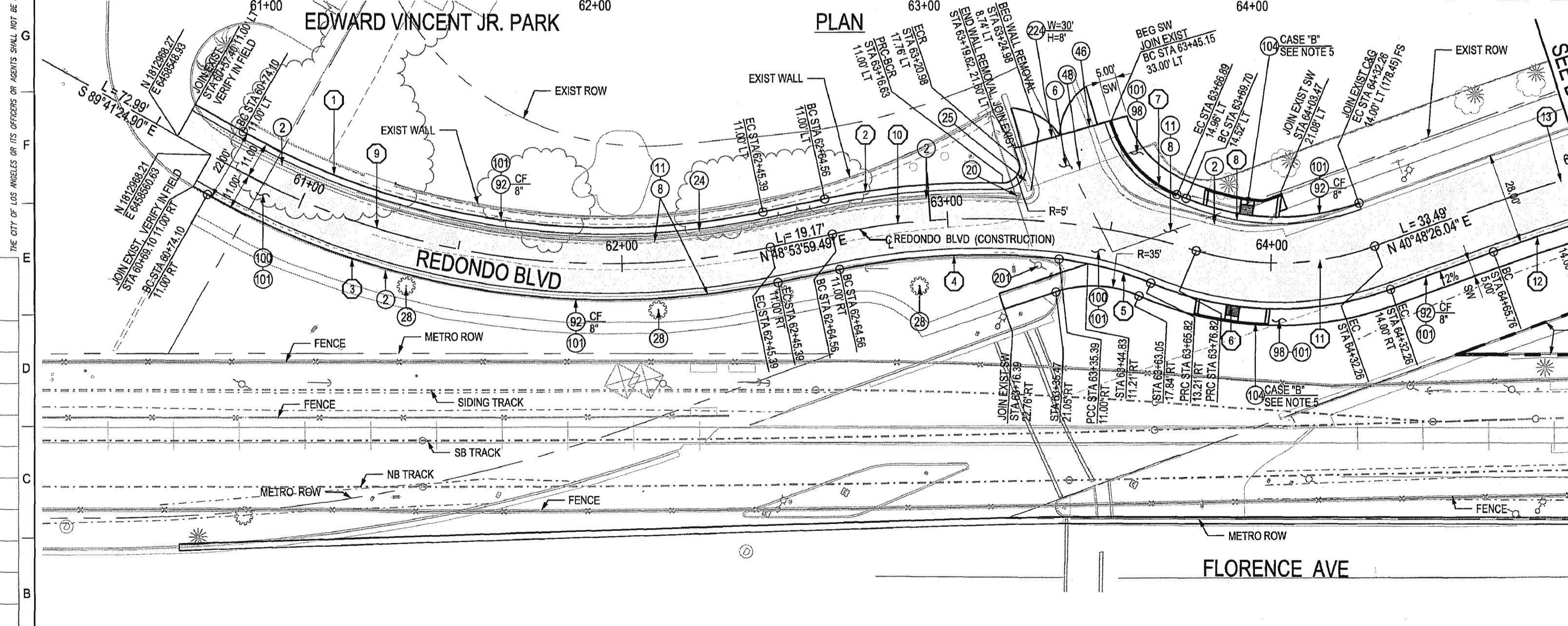


CURVE DATA TABLE				
No.	RADIUS	DELTA	LENGTH	TANGENT
1	226.00	41°24'36"	163.34	85.42
2	234.00	13°22'44"	54.64	30.94
3	248.00	42°7'41"	182.35	93.74
4	212.00	18°11'59"	67.34	33.96
5	100.00	16°34'53"	28.94	14.57
6	100.00	42°52'26"	74.83	39.26
7	35.00	50°52'33"	31.08	16.65
8	72.00	42°58'49"	54.01	28.35
9	237.00	41°24'36"	171.29	89.58
10	223.00	28°50'39"	112.26	57.35
11	86.00	36°56'12"	55.44	28.72
12	618.00	2°23'34"	25.81	12.91
13	632.00	20°0'0"	220.61	111.44

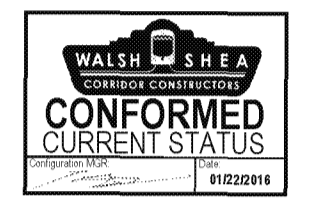
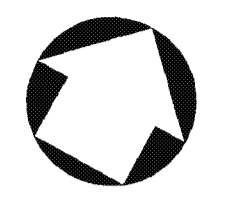
- CONSTRUCTION NOTES:**
- REMOVE EXISTING CURB & GUTTER
 - REMOVE EXISTING SIDEWALK / DRIVEWAY APPROACH / CURB RAMP
 - REMOVE EXISTING ASPHALT CONCRETE PAVEMENT
 - REMOVE EXISTING CRUSHED MISCELLANEOUS BASE
 - REMOVE EXISTING SIGN AND POST
 - REMOVE EXISTING METAL BEAM GUARDRAIL
 - REMOVE EXISTING CONCRETE MASONRY BLOCK WALL
 - REMOVE EXISTING TREE
 - SAWCUT / JOIN EXIST PAVEMENT
 - REMOVE EXISTING CHAIN LINK FENCE GATE
 - CONSTRUCT CURB AND GUTTER "TYPE A2" PER SPPWC STD PLAN 120-2, "CF" PER PLAN
 - CONSTRUCT 4" THICK PCC SIDEWALK
 - INSTALL AC PAVEMENT SECTION PER SOILS ENGINEER'S RECOMMENDATION, THICKNESS PER PLAN
 - INSTALL CRUSHED MISCELLANEOUS BASE (CMB) OVER COMPACTED NATIVE PER SOILS REPORT, THICKNESS PER PLAN
 - CONSTRUCT CURB RAMP PER SPPWS STD PLAN 111-5, "CASE, TYPE, X&Y" PER PLAN.
 - EXISTING POWER POLE TO REMAIN IN PLACE
 - INSTALL CHAIN LINK FENCE AND GATE PER SPPWS STD PLAN 600-3

- LEGEND:**
- [Symbol] = FULL RECONSTRUCTION AC PAVEMENT
- NOTES:**
- SB TRACK IS TRACK 3 AND NB TRACK IS TRACK 4
 - FOR RE-ESTABLISHING SURVEY MONUMENT, REFER TO METRO SPECIFICATIONS SECTION 01 32 23 3.01
 - THE CONTRACTOR SHALL VERIFY TIE-IN ELEVATIONS PRIOR TO CONSTRUCTION. IF ANY DISCREPANCIES ARE FOUND, THE CONTRACTOR SHALL NOTIFY THE ENGINEER.
 - SEE STREET LIGHTING (CL) PLANS FOR IMPROVEMENTS TO STREET LIGHTING.
 - SEE CURB RAMP DETAILS DWG CDT-B1-110



MATCHLINE STA 65+00

MATCHLINE STA 59+00



CRENSHAW/LAX TRANSIT CORRIDOR DESIGN/BUILD	
APPROVED	<input checked="" type="checkbox"/>
APPROVED AS NOTED, NO RESUBMITTAL REQUIRED	<input type="checkbox"/>
REJECTED, REVISE AND RESUBMIT	<input type="checkbox"/>
RECORD ONLY	<input type="checkbox"/>
Director, Construction MGR / Engineer:	Date:
<i>Mark...</i>	1/20/16

CITY OF INGLEWOOD, CALIFORNIA
PUBLIC WORKS DEPARTMENT

SUBMITTED BY/APPROVED BY: *[Signature]* 1-19-16
 ELOY CASTILLO, P.E. C69100, PRINCIPAL CIVIL ENGINEER

14-JAN-2016

DESIGNED BY: WERNER ABREGO
 DRAWN BY: JOHN MONG
 CHECKED BY: RYAN BROWNE
 IN CHARGE: DOMINGO LEON
 DATE: 12/18/15

LOS ANGELES COUNTY METROPOLITAN TRANSPORTATION AUTHORITY
Metro
 WALSH-SHEA CORRIDOR CONSTRUCTORS
 1777 Oakland Blvd. Walnut Creek, CA 94596

HNTB
 D'LEON Consulting Engineers

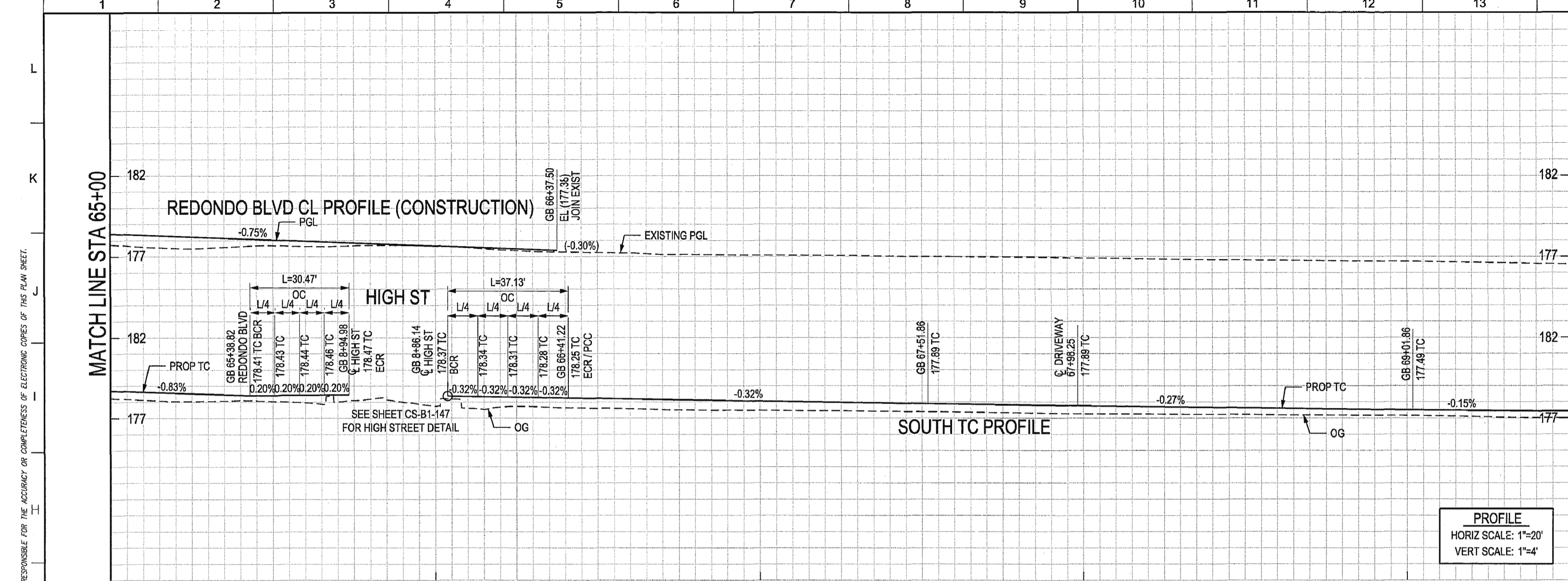
THE PREPARATION OF THIS DRAWING HAS BEEN FINANCED IN PART THROUGH A GRANT FROM THE U.S. DEPARTMENT OF TRANSPORTATION, FEDERAL TRANSIT ADMINISTRATION (FTA), UNDER THE FEDERAL TRANSIT ACT OF 1964, AS AMENDED, AND IN PART BY THE TAXES OF THE CITIZENS OF LOS ANGELES COUNTY AND OF THE STATE OF CALIFORNIA.

REV	DATE	BY	APP	REG NO	EXPIRES	SEAL HOLDER	DESCRIPTION
0	12/18/15						AFC SUBMITTAL

CRENSHAW/LAX TRANSIT CORRIDOR PROJECT
STREET MODIFICATION PLAN
REDONDO BLVD
PLAN & PROFILE STA 60+74.10 TO STA 65+00

CONTRACT NO: C0988
 DRAWING NO: CS-B1-140
 SCALE: 1"=20'
 SHEET NO: 0

REVISIONS (DATE) (BY) (DESCRIPTION) SHEET NO. 0 OF 1



CRENSHAW/LAX TRANSIT CORRIDOR
DESIGN/BUILD
APPROVED
APPROVED AS NOTED,
NO RESUBMITTAL REQUIRED
REJECTED, REVISE AND RESUBMIT
RECORD ONLY
Director, Construction MGR / Engineer: Date:
Mark Shear *1/19/16*

CURVE DATA TABLE				
No.	RADIUS	DELTA	LENGTH	TANGENT
13	622.00	20°0'0"	220.61	111.44
14	130.00	20°18'40"	46.08	23.29
15	610.00	4°54'18"	52.22	26.13

- CONSTRUCTION NOTES:**
- 8 REMOVE EXISTING PAVEMENT
 - 28 REMOVE EXISTING TREE
 - 46 SAWCUT/JOIN EXIST PAVEMENT
 - 92 CONSTRUCT CURB AND GUTTER "TYPE A2" PER SPPWC STD PLAN 120-2, "CF" PER PLAN
 - 98 CONSTRUCT 4" THICK PCC SIDEWALK, JOINTS PER SPPWC STD PLAN 112-2
 - 103 CONSTRUCT DRIVEWAY APPROACH PER SPPWC STD PLAN 110-2, "TYPE, W, X & Y" PER PLAN

PROFILE
HORIZ SCALE: 1"=20'
VERT SCALE: 1"=4'

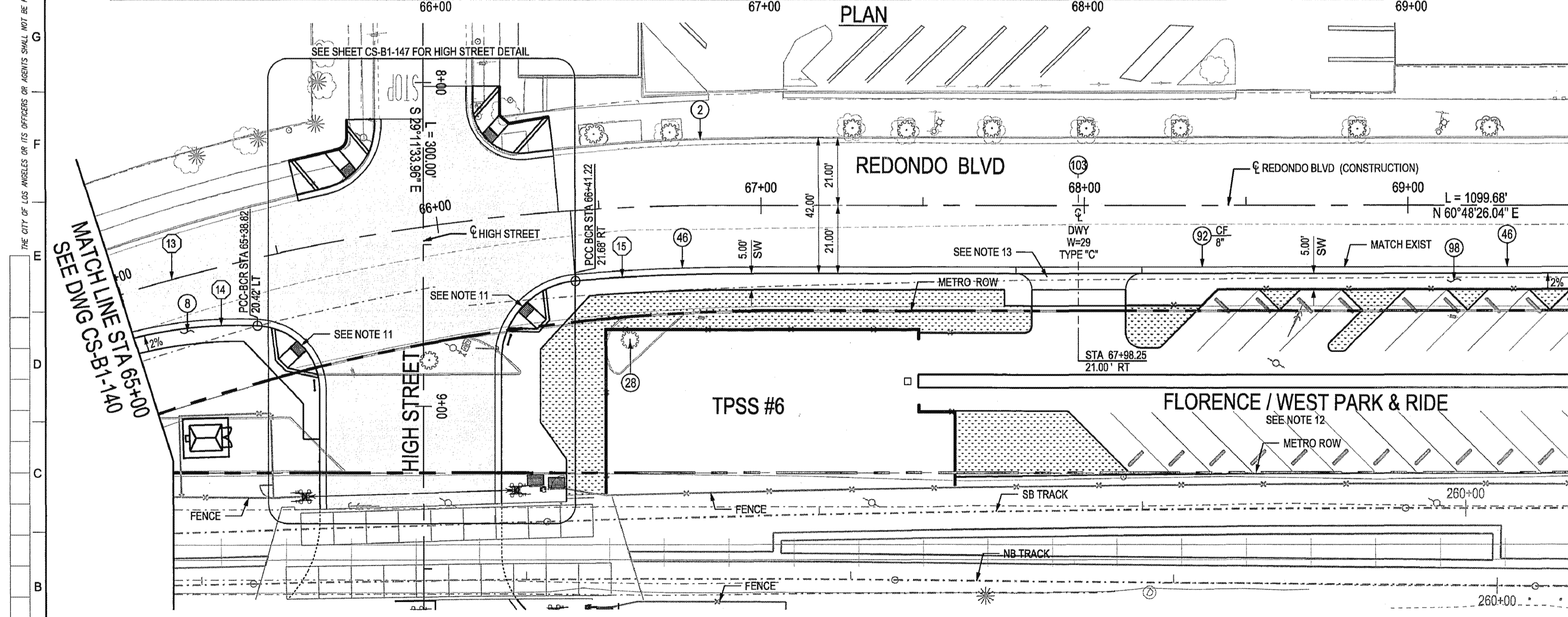
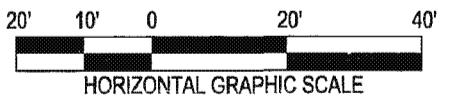
LEGEND:

- = GRIND & OVERLAY
- = FULL RECONSTRUCTION AC PAVEMENT
- = CONSTRUCT LANDSCAPE (SEE LANDSCAPE PLAN)



NOTES:

1. SEE SIGNING AND STRIPING (GEO) PLANS FOR CROSSWALK LOCATIONS
2. SB TRACK IS TRACK 3 AND NB TRACK IS TRACK 4
3. SEE CIVIL GUIDEWAY (CG) PLANS FOR CROSSING PANELS WITHIN GUIDEWAY
4. FOR RE-ESTABLISHING SURVEY MONUMENT, REFER TO METRO SPECIFICATIONS SECTION 01 32 23 3.01
5. THE CONTRACTOR SHALL VERIFY TIE-IN ELEVATIONS PRIOR TO CONSTRUCTION. IF ANY DISCREPANCIES ARE FOUND, THE CONTRACTOR SHALL NOTIFY THE ENGINEER.
6. SEE TRAFFIC SIGNAL (TS) PLANS FOR TRAFFIC SIGNAL POLE LOCATIONS.
7. FOR IMPROVEMENTS AT TPSS, REFER TO TPSS PLANS.
8. SEE DRAINAGE (CD) PLANS FOR STORM DRAIN RELATED WORK
9. SEE STREET LIGHTING (CL) PLANS FOR IMPROVEMENTS TO STREET LIGHTING.
10. FOR GRADE CROSSING DETAILS AND EQUIPMENT SEE DWG Q-B1-108
11. SEE HIGH STREET PLAN FOR CURB RETURN DATA. SHEET CS-B1-147
12. SEE B1.4 STATIONS PACKAGE FOR PLATFORM AND PARK AND RIDE.
13. SEE DRIVEWAY DETAILS DWG. CDT-B1-114



MATCH LINE STA 69+50
SEE DWG CS-B1-142

MATCH LINE STA 65+00
SEE DWG CS-B1-140

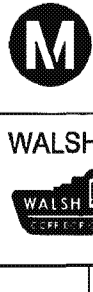
**CITY OF INGLEWOOD, CALIFORNIA
PUBLIC WORKS DEPARTMENT**

SUBMITTED BY/APPROVED BY: *[Signature]* 1-19-16
ELOY CASTILLO, P.E. C68100, PRINCIPAL CIVIL ENGINEER

THE PREPARATION OF THIS DRAWING HAS BEEN FINANCED IN PART THROUGH A GRANT FROM THE U.S. DEPARTMENT OF TRANSPORTATION, FEDERAL TRANSIT ADMINISTRATION (FTA), UNDER THE FEDERAL TRANSIT ACT OF 1964, AS AMENDED, AND IN PART BY THE TAXES OF THE CITIZENS OF LOS ANGELES COUNTY AND OF THE STATE OF CALIFORNIA.

REV	DATE	BY	APP	REG NO	EXPIRES	SEAL HOLDER	DESCRIPTION
0	12/18/15						AFC SUBMITTAL

DESIGNED BY
WERNER ABREGO
DRAWN BY
JOHN MONG
CHECKED BY
RYAN BROWNE
IN CHARGE
DOMINGO LEON
DATE
12/18/15



LOS ANGELES COUNTY METROPOLITAN TRANSPORTATION AUTHORITY
Metro

WALSH-SHEA CORRIDOR CONSTRUCTORS
1777 Oakland Blvd.
Walnut Creek, CA 94596

HNTB
Schmitt

D'LEON
Consulting Engineers
Dom Leon

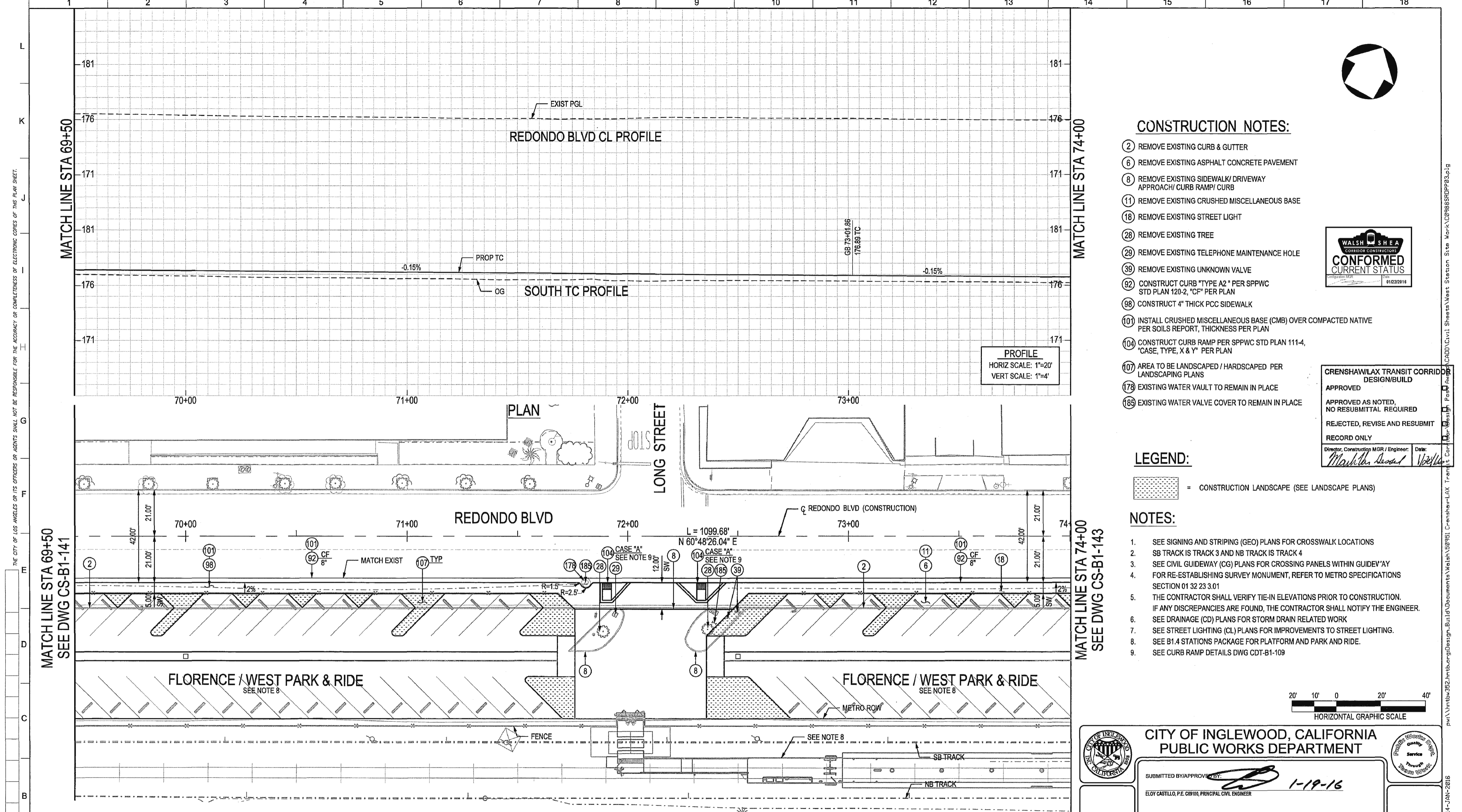
**CRENSHAW/LAX
TRANSIT CORRIDOR PROJECT
STREET MODIFICATION PLAN
REDONDO BLVD
PLAN & PROFILE STA 65+00 TO STA 69+50**

CONTRACT NO
C0988

DRAWING NO
CS-B1-141

SCALE
1"=20'
1"=4'

SHEET NO
0



CONSTRUCTION NOTES:

- ② REMOVE EXISTING CURB & GUTTER
- ⑥ REMOVE EXISTING ASPHALT CONCRETE PAVEMENT
- ⑧ REMOVE EXISTING SIDEWALK/ DRIVEWAY APPROACH/ CURB RAMP/ CURB
- ⑪ REMOVE EXISTING CRUSHED MISCELLANEOUS BASE
- ⑱ REMOVE EXISTING STREET LIGHT
- ⑳ REMOVE EXISTING TREE
- ㉑ REMOVE EXISTING TELEPHONE MAINTENANCE HOLE
- ㉒ REMOVE EXISTING UNKNOWN VALVE
- ㉓ CONSTRUCT CURB "TYPE A2" PER SPPWC STD PLAN 120-2, "CF" PER PLAN
- ㉔ CONSTRUCT 4" THICK PCC SIDEWALK
- ㉕ INSTALL CRUSHED MISCELLANEOUS BASE (CMB) OVER COMPACTED NATIVE PER SOILS REPORT, THICKNESS PER PLAN
- ㉖ CONSTRUCT CURB RAMP PER SPPWC STD PLAN 111-4, "CASE, TYPE, X & Y" PER PLAN
- ㉗ AREA TO BE LANDSCAPED / HARDSCAPED PER LANDSCAPING PLANS
- ㉘ EXISTING WATER VAULT TO REMAIN IN PLACE
- ㉙ EXISTING WATER VALVE COVER TO REMAIN IN PLACE



CRENSHAW/LAX TRANSIT CORRIDOR DESIGN/BUILD
 APPROVED
 APPROVED AS NOTED, NO RESUBMITTAL REQUIRED
 REJECTED, REVISE AND RESUBMIT
 RECORD ONLY
 Director, Construction MGR / Engineer: *Mark...* Date: *1/19/16*

LEGEND:

= CONSTRUCTION LANDSCAPE (SEE LANDSCAPE PLANS)

NOTES:

1. SEE SIGNING AND STRIPING (GEO) PLANS FOR CROSSWALK LOCATIONS
2. SB TRACK IS TRACK 3 AND NB TRACK IS TRACK 4
3. SEE CIVIL GUIDEWAY (CG) PLANS FOR CROSSING PANELS WITHIN GUIDEWAY
4. FOR RE-ESTABLISHING SURVEY MONUMENT, REFER TO METRO SPECIFICATIONS SECTION 01 32 23 3.01
5. THE CONTRACTOR SHALL VERIFY TIE-IN ELEVATIONS PRIOR TO CONSTRUCTION. IF ANY DISCREPANCIES ARE FOUND, THE CONTRACTOR SHALL NOTIFY THE ENGINEER.
6. SEE DRAINAGE (CD) PLANS FOR STORM DRAIN RELATED WORK
7. SEE STREET LIGHTING (CL) PLANS FOR IMPROVEMENTS TO STREET LIGHTING.
8. SEE B1.4 STATIONS PACKAGE FOR PLATFORM AND PARK AND RIDE.
9. SEE CURB RAMP DETAILS DWG CDT-B1-109



CITY OF INGLEWOOD, CALIFORNIA PUBLIC WORKS DEPARTMENT

SUBMITTED BY/ APPROVED BY: *[Signature]* 1-19-16
 ELOY CASTILLO, P.E. C69100, PRINCIPAL CIVIL ENGINEER

CRENSHAW/LAX TRANSIT CORRIDOR PROJECT
STREET MODIFICATION PLAN
REDONDO BLVD
PLAN & PROFILE STA 69+50 TO STA 74+00

CONTRACT NO. **C0988**
 DRAWING NO. **CS-B1-142** REV **0**
 SCALE **1"=20'**
1"=4'
 SHEET NO.

THE PREPARATION OF THIS DRAWING HAS BEEN FINANCED IN PART THROUGH A GRANT FROM THE U.S. DEPARTMENT OF TRANSPORTATION, FEDERAL TRANSIT ADMINISTRATION (FTA), UNDER THE FEDERAL TRANSIT ACT OF 1964, AS AMENDED, AND IN PART BY THE TAXES OF THE CITIZENS OF LOS ANGELES COUNTY AND OF THE STATE OF CALIFORNIA.

REV	DATE	BY	APP	REG NO	EXPIRES	SEAL HOLDER	DESCRIPTION
0	12/18/15						AFC SUBMITTAL

DESIGNED BY
WERNER ABREGO

DRAWN BY
JOHN MONG

CHECKED BY
RYAN BROWNE

IN CHARGE
DOMINGO LEON

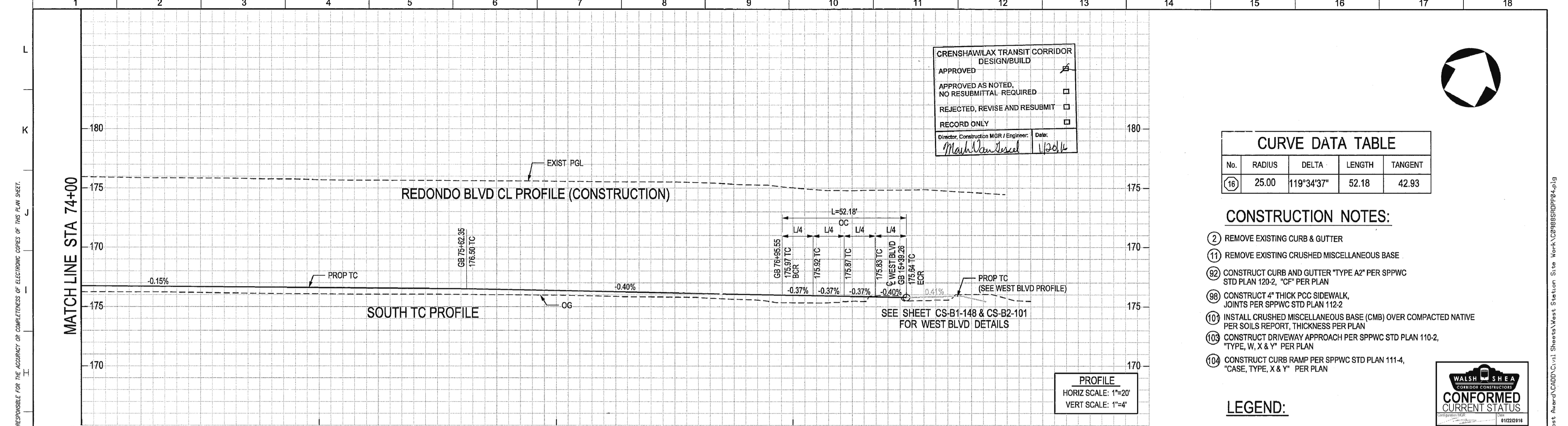
DATE
12/18/15

LOS ANGELES COUNTY METROPOLITAN TRANSPORTATION AUTHORITY
Metro

WALSH-SHEA CORRIDOR CONSTRUCTORS
 1777 Oakland Blvd.
 Walnut Creek, CA 94596

HNTB
 CONSULTING ENGINEERS

D'LEON
 CONSULTING ENGINEERS

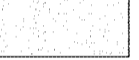



CRENSHAW/LAX TRANSIT CORRIDOR
DESIGN/BUILD
APPROVED
APPROVED AS NOTED,
NO RESUBMITTAL REQUIRED
REJECTED, REVISE AND RESUBMIT
RECORD ONLY
Director, Construction MGR / Engineer: *Mark Van der Meer* Date: *1/20/16*

CONSTRUCTION NOTES:

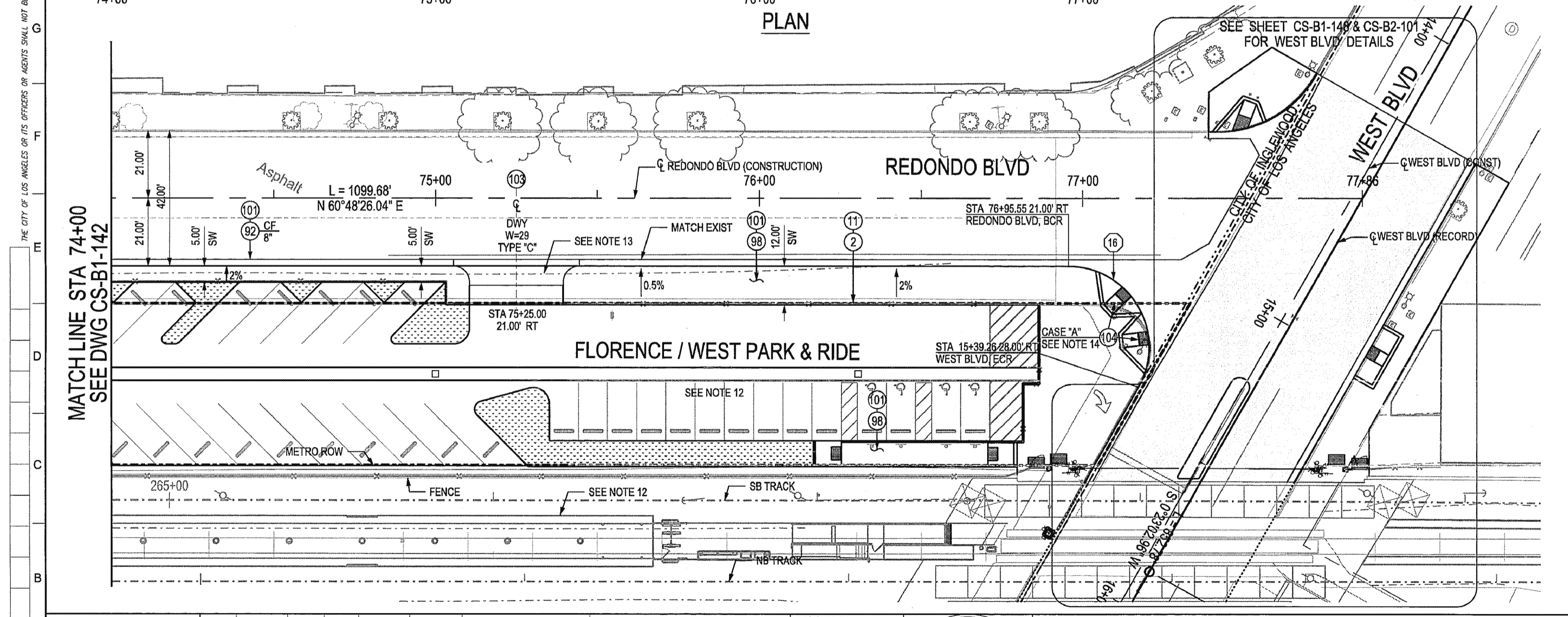
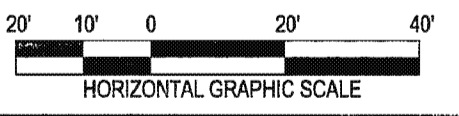
- ② REMOVE EXISTING CURB & GUTTER
- ⑪ REMOVE EXISTING CRUSHED MISCELLANEOUS BASE
- ⑨2 CONSTRUCT CURB AND GUTTER "TYPE A2" PER SPPWC STD PLAN 120-2, "CF" PER PLAN
- ⑨8 CONSTRUCT 4" THICK PCC SIDEWALK, JOINTS PER SPPWC STD PLAN 112-2
- ⑩1 INSTALL CRUSHED MISCELLANEOUS BASE (CMB) OVER COMPACTED NATIVE PER SOILS REPORT, THICKNESS PER PLAN
- ⑩3 CONSTRUCT DRIVEWAY APPROACH PER SPPWC STD PLAN 110-2, "TYPE, W, X & Y" PER PLAN
- ⑩4 CONSTRUCT CURB RAMP PER SPPWC STD PLAN 111-4, "CASE, TYPE, X & Y" PER PLAN

LEGEND:

-  = FULL RECONSTRUCTION AC PAVEMENT
-  = CONSTRUCT LANDSCAPE (SEE LANDSCAPE PLANS)

NOTES:

1. SEE SIGNING AND STRIPING (GEO) PLANS FOR CROSSWALK LOCATIONS
2. FOR RAISED MEDIAN ISLAND DETAILS SEE, DWG. CDT-B1-124
3. REFER TO SHEET CS-B1-148 & CS-B2-101 FOR ROADWAY IMPROVEMENTS IN CITY OF LOS ANGELES JURISDICTION
4. SB TRACK IS TRACK 3 AND NB TRACK IS TRACK 4
5. SEE CIVIL GUIDEWAY (CG) PLANS FOR CROSSING PANELS WITHIN GUIDEWAY
6. FOR RE-ESTABLISHING SURVEY MONUMENT, REFER TO METRO SPECIFICATIONS SECTION 01 32 23 3.01
7. THE CONTRACTOR SHALL VERIFY TIE-IN ELEVATIONS PRIOR TO CONSTRUCTION. IF ANY DISCREPANCIES ARE FOUND, THE CONTRACTOR SHALL NOTIFY THE ENGINEER.
8. SEE TRAFFIC SIGNAL (TS) PLANS FOR TRAFFIC SIGNAL POLE LOCATIONS.
9. SEE GRADE CROSSING DETAILS AND EQUIPMENT SEE DWG Q-B1-109.
10. SEE DRAINAGE (CD) PLANS FOR STORM DRAIN RELATED WORK
11. SEE STREET LIGHTING (CL) PLANS FOR IMPROVEMENTS TO STREET LIGHTING.
12. SEE B1.4 STATIONS PACKAGE FOR PLATFORM AND PARK AND RIDE.
13. SEE DRIVEWAY DETAILS DWG. CDT-B1-114
14. SEE CURB RAMP DETAILS DWG CDT-B1-110



CITY OF INGLEWOOD, CALIFORNIA
PUBLIC WORKS DEPARTMENT

SUBMITTED BY/APPROVED BY: *[Signature]* 1-19-16
ELOY CASTILLO, P.E. C68106, PRINCIPAL CIVIL ENGINEER

CONTRACT NO. C0988

DRAWING NO. **CS-B1-143** REV. **0**

SCALE: 1"=20'
1"=4'

SHEET NO.

DESIGNED BY: WERNER ABREGO
DRAWN BY: JOHN MONG
CHECKED BY: RYAN BROWNE
IN CHARGE: DOMINGO LEON
DATE: 12/18/15

LOS ANGELES COUNTY METROPOLITAN TRANSPORTATION AUTHORITY
Metro

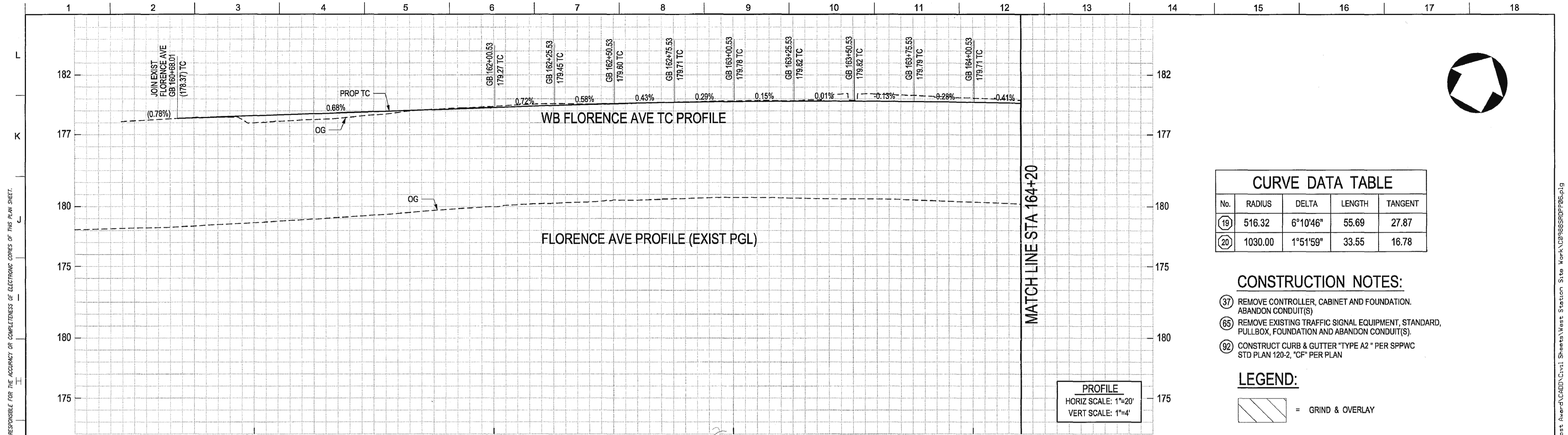
WALSH-SHEA CORRIDOR CONSTRUCTORS
1777 Oakland Blvd.
Walnut Creek, CA 94596

HNTB
APPROVED

D'LEON
Consulting Engineers
SUBMITTED

THE PREPARATION OF THIS DRAWING HAS BEEN FINANCED IN PART THROUGH A GRANT FROM THE U.S. DEPARTMENT OF TRANSPORTATION, FEDERAL TRANSIT ADMINISTRATION (FTA), UNDER THE FEDERAL TRANSIT ACT OF 1994, AS AMENDED, AND IN PART BY THE TAXES OF THE CITIZENS OF LOS ANGELES COUNTY AND OF THE STATE OF CALIFORNIA.

REV	DATE	BY	APP	REG NO	EXPIRES	SEAL HOLDER	DESCRIPTION
0	12/18/15						AFC SUBMITTAL

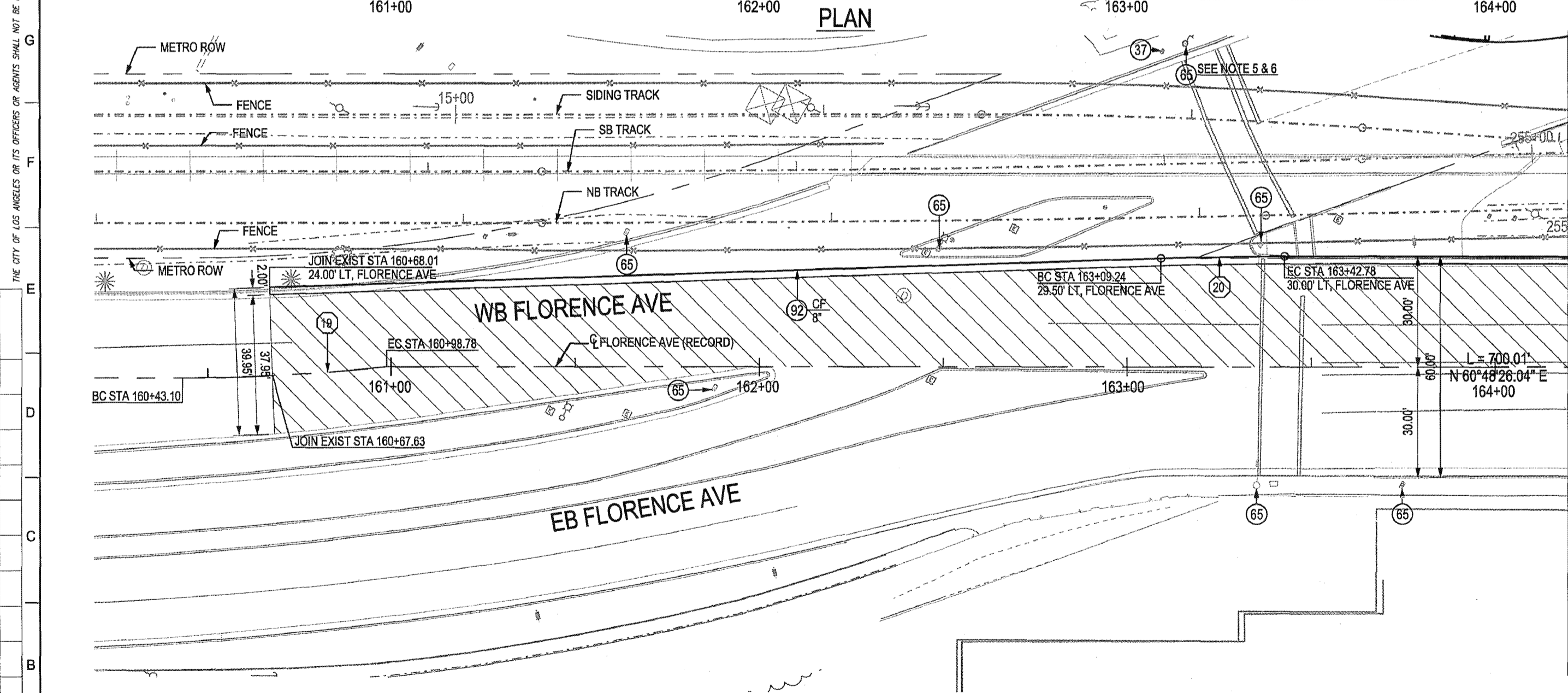


CURVE DATA TABLE				
No.	RADIUS	DELTA	LENGTH	TANGENT
19	516.32	6°10'46"	55.69	27.87
20	1030.00	1°51'59"	33.55	16.78

- CONSTRUCTION NOTES:**
- (37) REMOVE CONTROLLER, CABINET AND FOUNDATION. ABANDON CONDUIT(S)
 - (65) REMOVE EXISTING TRAFFIC SIGNAL EQUIPMENT, STANDARD, PULLBOX, FOUNDATION AND ABANDON CONDUIT(S).
 - (92) CONSTRUCT CURB & GUTTER "TYPE A2" PER SPPWC STD PLAN 120-2, "CF" PER PLAN

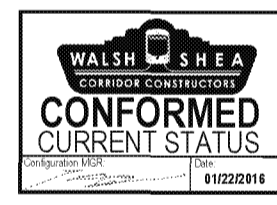
LEGEND:
 = GRIND & OVERLAY

PROFILE
 HORIZ SCALE: 1"=20'
 VERT SCALE: 1"=4'



MATCH LINE STA 164+20

MATCH LINE STA 164+20
SEE DWG CS-B1-146



CRENSHAW/LAX TRANSIT CORRIDOR DESIGN/BUILD

APPROVED

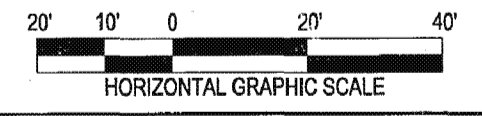
APPROVED AS NOTED, NO RESUBMITTAL REQUIRED

REJECTED, REVISE AND RESUBMIT

RECORD ONLY

Director, Construction MGR / Engineer: *Manh Van Doan* Date: 1/20/16

- NOTES:**
- SB TRACK IS TRACK 3 AND NB TRACK IS TRACK 4
 - FOR RE-ESTABLISHING SURVEY MONUMENT, REFER TO METRO SPECIFICATIONS SECTION 01 32 23 3.01
 - THE CONTRACTOR SHALL VERIFY TIE-IN ELEVATIONS PRIOR TO CONSTRUCTION. IF ANY DISCREPANCIES ARE FOUND, THE CONTRACTOR SHALL NOTIFY THE ENGINEER.
 - SEE STREET LIGHTING (CL) PLANS FOR IMPROVEMENTS TO STREET LIGHTING.
 - ALL REMOVED TRAFFIC SIGNAL EQUIPMENT TO BE SALVAGED AND DELIVERED TO THE CITY OF INGLEWOOD.
 - REMOVE ALL TRAFFIC SIGNAL WIRING.



CITY OF INGLEWOOD, CALIFORNIA
 PUBLIC WORKS DEPARTMENT

SUBMITTED BY/ APPROVED BY: *Eloy Castillo* 1-19-16
 ELOY CASTILLO, P.E. C69100, PRINCIPAL CIVIL ENGINEER

REVISION DATES (DESIGN STAGE ONLY)

REV	DATE	BY	APP	REG NO	EXPIRES	SEAL HOLDER	DESCRIPTION
0	12/18/15						AFC SUBMITTAL

REV	DATE	BY	APP	REG NO	EXPIRES	SEAL HOLDER	DESCRIPTION
0	12/18/15						AFC SUBMITTAL

DESIGNED BY: RYAN BROWNE
 DRAWN BY: JOHN MONG
 CHECKED BY: WERNER ABREGO
 IN CHARGE: DOMINGO LEON
 DATE: 12/18/15

REGISTERED PROFESSIONAL ENGINEER
 DOMINGO LEON
 No. C34988
 Exp. 9-30-17
 CIVIL
 STATE OF CALIFORNIA

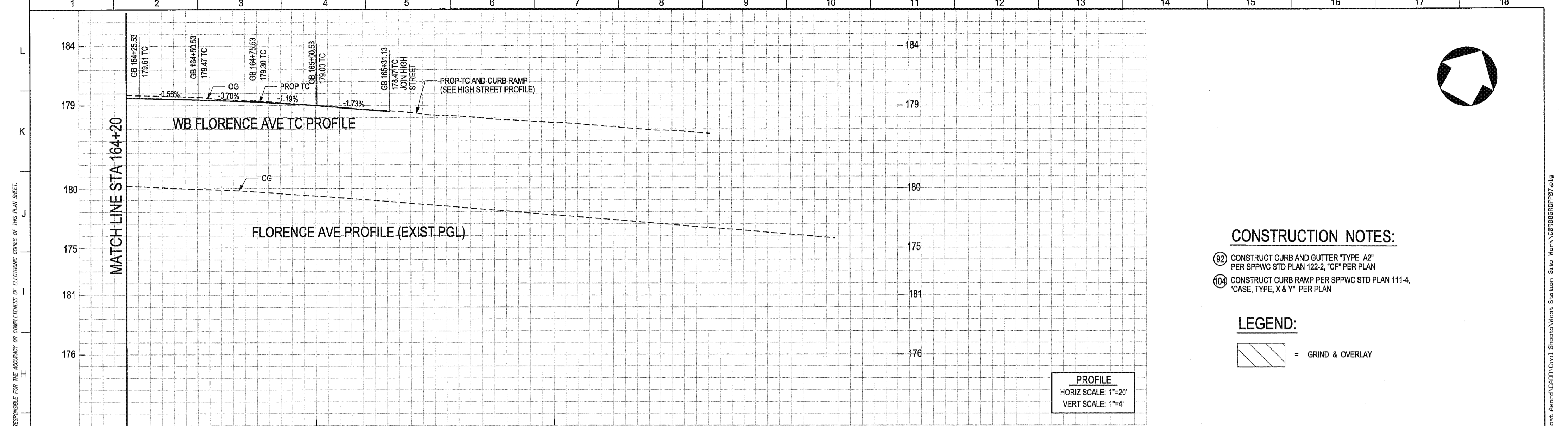
LOS ANGELES COUNTY METROPOLITAN TRANSPORTATION AUTHORITY
Metro

WALSH-SHEA CORRIDOR CONSTRUCTORS
 1777 Oakland Blvd.
 Walnut Creek, CA 94596

HNTB
 D'LEON Consulting Engineers

CRENSHAW/LAX
 TRANSIT CORRIDOR PROJECT
 STREET MODIFICATION PLAN
 FLORENCE AVE
 PLAN & PROFILE STA 161+50 TO STA 164+20

CONTRACT NO	C0988
DRAWING NO	CS-B1-145
SCALE	1"=20' 1"=4'
SHEET NO	0



CONSTRUCTION NOTES:

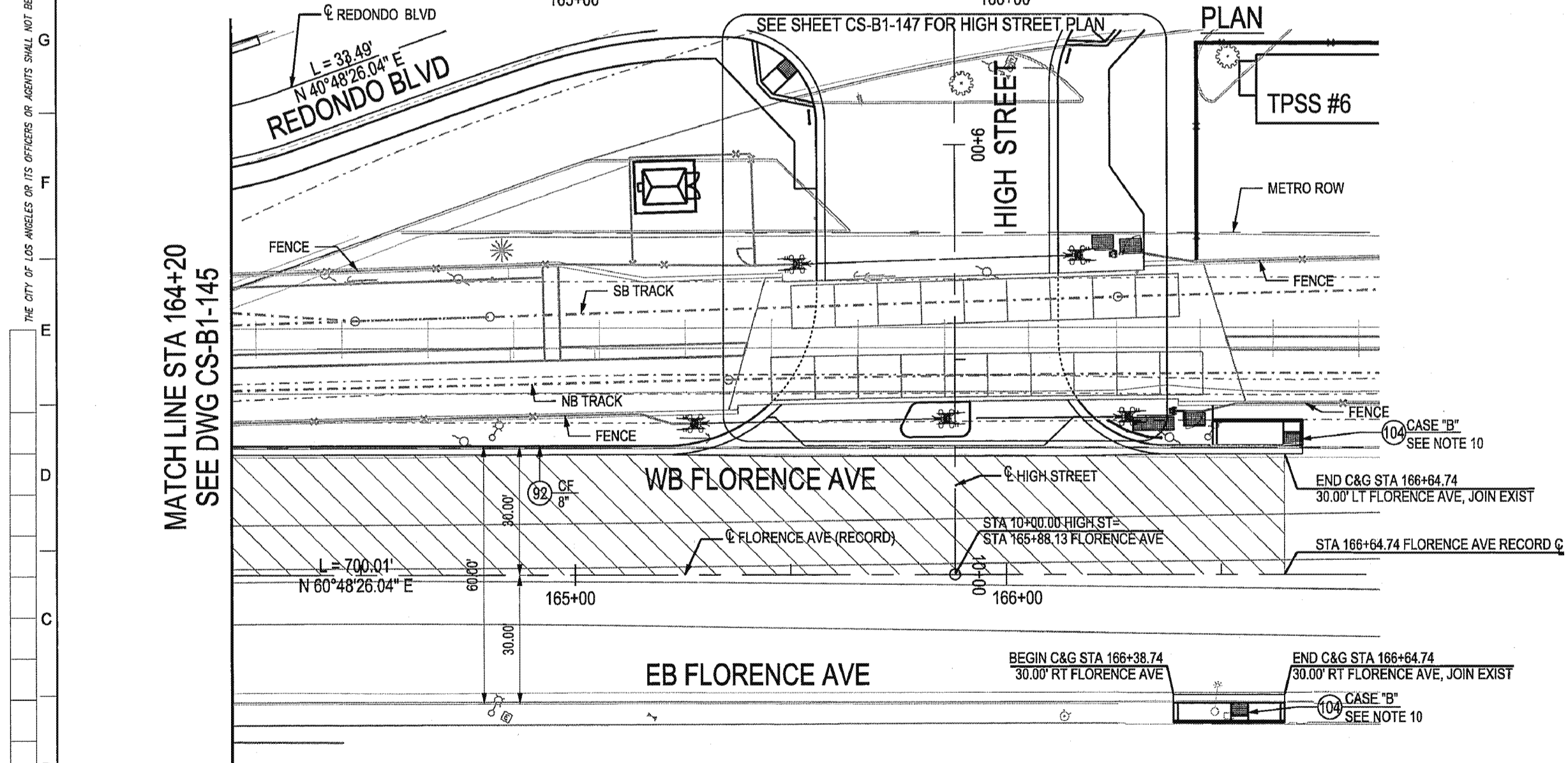
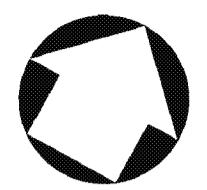
- 92 CONSTRUCT CURB AND GUTTER "TYPE A2" PER SPPWC STD PLAN 122-2, "CF" PER PLAN
- 104 CONSTRUCT CURB RAMP PER SPPWC STD PLAN 111-4, "CASE, TYPE, X & Y" PER PLAN

LEGEND:

= GRIND & OVERLAY

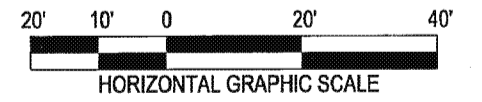
PROFILE
 HORIZ SCALE: 1"=20'
 VERT SCALE: 1"=4'

THE CITY OF LOS ANGELES OR ITS OFFICERS OR AGENTS SHALL NOT BE RESPONSIBLE FOR THE ACCURACY OR COMPLETENESS OF ELECTRONIC COPIES OF THIS PLAN SHEET.



NOTES:

1. SEE SIGNING AND STRIPING (GEO) PLANS FOR CROSSWALK LOCATIONS
2. FOR GRADE CROSSING DETAILS AND EQUIPMENT SEE DWG. Q-B1-108
3. SB TRACK IS TRACK 3 AND NB TRACK IS TRACK 4
4. SEE CIVIL GUIDEWAY (CG) PLANS FOR CROSSING PANELS WITHIN GUIDEWAY
5. FOR RE-ESTABLISHING SURVEY MONUMENT, REFER TO METRO SPECIFICATIONS SECTION 01 32 23 3.01
6. THE CONTRACTOR SHALL VERIFY TIE-IN ELEVATIONS PRIOR TO CONSTRUCTION. IF ANY DISCREPANCIES ARE FOUND, THE CONTRACTOR SHALL NOTIFY THE ENGINEER.
7. SEE TRAFFIC SIGNAL (TS) PLANS FOR TRAFFIC SIGNAL POLE LOCATIONS.
8. FOR IMPROVEMENTS AT TPSS, REFER TO TPSS PLANS.
9. SEE STREET LIGHTING (CL) PLANS FOR IMPROVEMENTS TO STREET LIGHTING.
10. SEE CURB RAMP DETAILS DWG CDT-B1-110



CRENSHAW/LAX TRANSIT CORRIDOR DESIGN/BUILD

APPROVED

APPROVED AS NOTED, NO RESUBMITTAL REQUIRED

REJECTED, REVISE AND RESUBMIT

RECORD ONLY

Director, Construction MGR / Engineer: *Mark Van Sessel* Date: *1/20/16*

CITY OF INGLEWOOD, CALIFORNIA PUBLIC WORKS DEPARTMENT

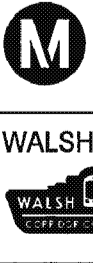
SUBMITTED BY/ APPROVED BY: *[Signature]* 1-19-16

ELOY CASTILLO, P.E. C69100, PRINCIPAL CIVIL ENGINEER

THE PREPARATION OF THIS DRAWING HAS BEEN FINANCED IN PART THROUGH A GRANT FROM THE U.S. DEPARTMENT OF TRANSPORTATION, FEDERAL TRANSIT ADMINISTRATION (FTA), UNDER THE FEDERAL TRANSIT ACT OF 1984, AS AMENDED, AND IN PART BY THE TAXES OF THE CITIZENS OF LOS ANGELES COUNTY AND OF THE STATE OF CALIFORNIA.

REV	DATE	BY	APP	REG NO	EXPIRES	SEAL HOLDER	DESCRIPTION
0	12/18/15						AFC SUBMITTAL

DESIGNED BY RYAN BROWNE
 DRAWN BY JOHN MONG
 CHECKED BY WERNER ABREGO
 IN CHARGE DOMINGO LEON
 DATE 12/18/15



LOS ANGELES COUNTY METROPOLITAN TRANSPORTATION AUTHORITY Metro

WALSH-SHEA CORRIDOR CONSTRUCTORS
 1777 Oakland Blvd. Walnut Creek, CA 94596

HNTB **D'LEON Consulting Engineers**

CRENSHAW/LAX TRANSIT CORRIDOR PROJECT

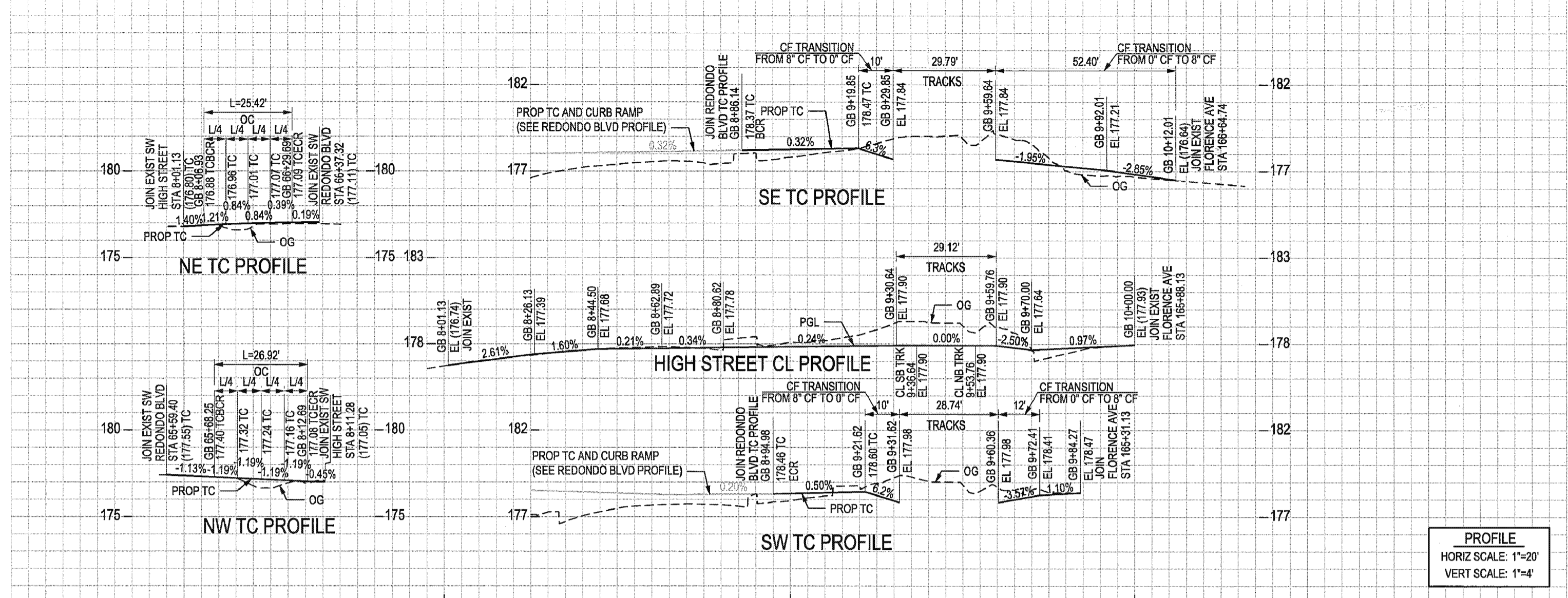
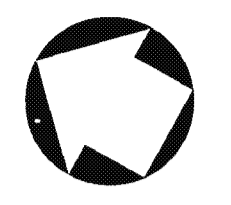
STREET MODIFICATION PLAN FLORENCE AVE

PLAN & PROFILE STA 164+20 TO STA 166+64.74

CONTRACT NO. C0988
 DRAWING NO. CS-B1-146
 SCALE 1"=20' / 1"=4'
 SHEET NO. 0

THE CITY OF LOS ANGELES OR ITS OFFICERS OR AGENTS SHALL NOT BE RESPONSIBLE FOR THE ACCURACY OR COMPLETENESS OF ELECTRONIC COPIES OF THIS PLAN SHEET.

CURVE DATA TABLE				
No.	RADIUS	DELTA	LENGTH	TANGENT
21	15.00	97°04'60"	25.42	16.98
22	25.00	85°05'42"	37.13	22.95
23	20.00	77°07'56"	26.92	15.95
24	20.00	87°17'46"	30.47	19.08
25	25.00	54°40'41"	23.86	12.93
26	35.00	46°41'59"	26.45	13.89



PROFILE
 HORIZ SCALE: 1"=20'
 VERT SCALE: 1"=4'

CONSTRUCTION NOTES:

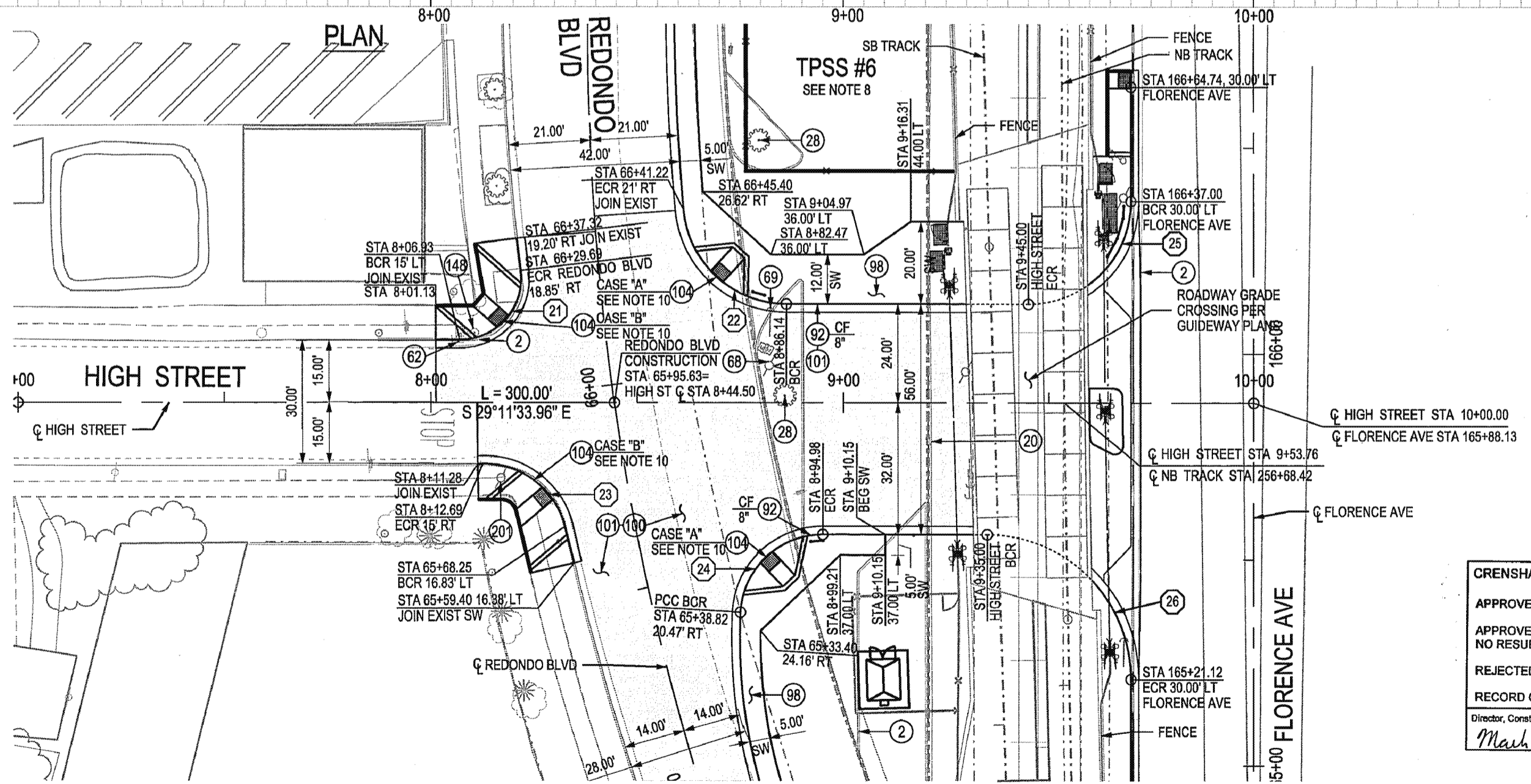
- 2 REMOVE EXISTING CURB & GUTTER
- 8 REMOVE EXISTING ASPHALT CONCRETE PAVEMENT
- 20 REMOVE EXISTING SIGN AND POST
- 28 REMOVE EXISTING TREE
- 39 REMOVE EXISTING UNKNOWN VALVE
- 62 RELOCATE AND/OR ADJUST EXISTING WATER VALVE COVER TO GRADE
- 68 RELOCATE EXISTING POLE ANCHOR
- 69 RELOCATE EXISTING GUY WIRE
- 92 CONSTRUCT CURB AND GUTTER "TYPE A2" PER SPPWC STD PLAN 120-2, "CF" PER PLAN
- 98 CONSTRUCT 4" THICK PCC SIDEWALK
- 100 INSTALL A.C. PAVEMENT SECTION PER SOILS ENGINEER'S RECOMMENDATION, THICKNESS PER PLAN
- 101 INSTALL CRUSHED MISCELLANEOUS BASE (CMB) OVER COMPACTED NATIVE PER SOILS REPORT, THICKNESS PER PLAN
- 104 CONSTRUCT CURB RAMP PER SPPWC STD PLAN 111-4, "CASE, TYPE, X & Y" PER PLAN
- 148 EXISTING FIRE HYDRANT TO REMAIN IN PLACE
- 201 EXISTING POWER POLE TO REMAIN IN PLACE

LEGEND:

= FULL RECONSTRUCTION AC PAVEMENT

NOTES:

1. SEE SIGNING AND STRIPING (GEO) PLANS FOR CROSSWALK LOCATIONS
2. FOR GRADE CROSSING DETAILS AND EQUIPMENTS SEE DWG Q-B1-108
3. SB TRACK IS TRACK 3 AND NB TRACK IS TRACK 4
4. SEE CIVIL GUIDEWAY (CG) PLANS FOR CROSSING PANELS WITHIN GUIDEWAY
5. FOR RE-ESTABLISHING SURVEY MONUMENT, REFER TO METRO SPECIFICATIONS SECTION 01 32 23 3.01
6. THE CONTRACTOR SHALL VERIFY TIE-IN ELEVATIONS PRIOR TO CONSTRUCTION. IF ANY DISCREPANCIES ARE FOUND, THE CONTRACTOR SHALL NOTIFY THE ENGINEER.
7. SEE TRAFFIC SIGNAL (TS) PLANS FOR TRAFFIC SIGNAL POLE LOCATIONS.
8. FOR IMPROVEMENTS AT TPSS, REFER TO TPSS PLANS.
9. SEE STREET LIGHTING (CL) PLANS FOR IMPROVEMENTS TO STREET LIGHTING.
10. SEE CURB RAMP DETAILS DWG CDT-B1-109



CRENSHAW/LAX TRANSIT CORRIDOR DESIGN/BUILD

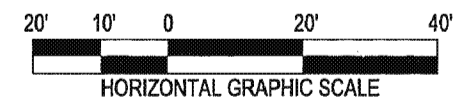
APPROVED

APPROVED AS NOTED, NO RESUBMITTAL REQUIRED

REJECTED, REVISE AND RESUBMIT

RECORD ONLY

Director, Construction MGR / Engineer: Date: *Mark Van Dusen* 1/20/16



CITY OF INGLEWOOD, CALIFORNIA PUBLIC WORKS DEPARTMENT

SUBMITTED BY/APPROVED BY: *[Signature]* 1-19-16

ELOY CASTILLO, P.E. C68160, PRINCIPAL CIVIL ENGINEER

THE PREPARATION OF THIS DRAWING HAS BEEN FINANCED IN PART THROUGH A GRANT FROM THE U.S. DEPARTMENT OF TRANSPORTATION, FEDERAL TRANSIT ADMINISTRATION (FTA), UNDER THE FEDERAL TRANSIT ACT OF 1964, AS AMENDED, AND IN PART BY THE TAXES OF THE CITIZENS OF LOS ANGELES COUNTY AND OF THE STATE OF CALIFORNIA.

REV	DATE	BY	APP	REG NO	EXPIRES	SEAL HOLDER	DESCRIPTION
0	12/18/15						AFC SUBMITTAL

DESIGNED BY: RYAN BROWNE
 DRAWN BY: JOHN MONG
 CHECKED BY: WERNER ABREGO
 IN CHARGE: DOMINGO LEON
 DATE: 12/18/15

REGISTERED PROFESSIONAL ENGINEER
 DOMINGO LEON
 No. C34988
 Exp. 9-30-17
 CIVIL
 STATE OF CALIFORNIA

M LOS ANGELES COUNTY METROPOLITAN TRANSPORTATION AUTHORITY
Metro

WALSH-SHEA CORRIDOR CONSTRUCTORS
 1777 Oakland Blvd.
 Walnut Creek, CA 94596

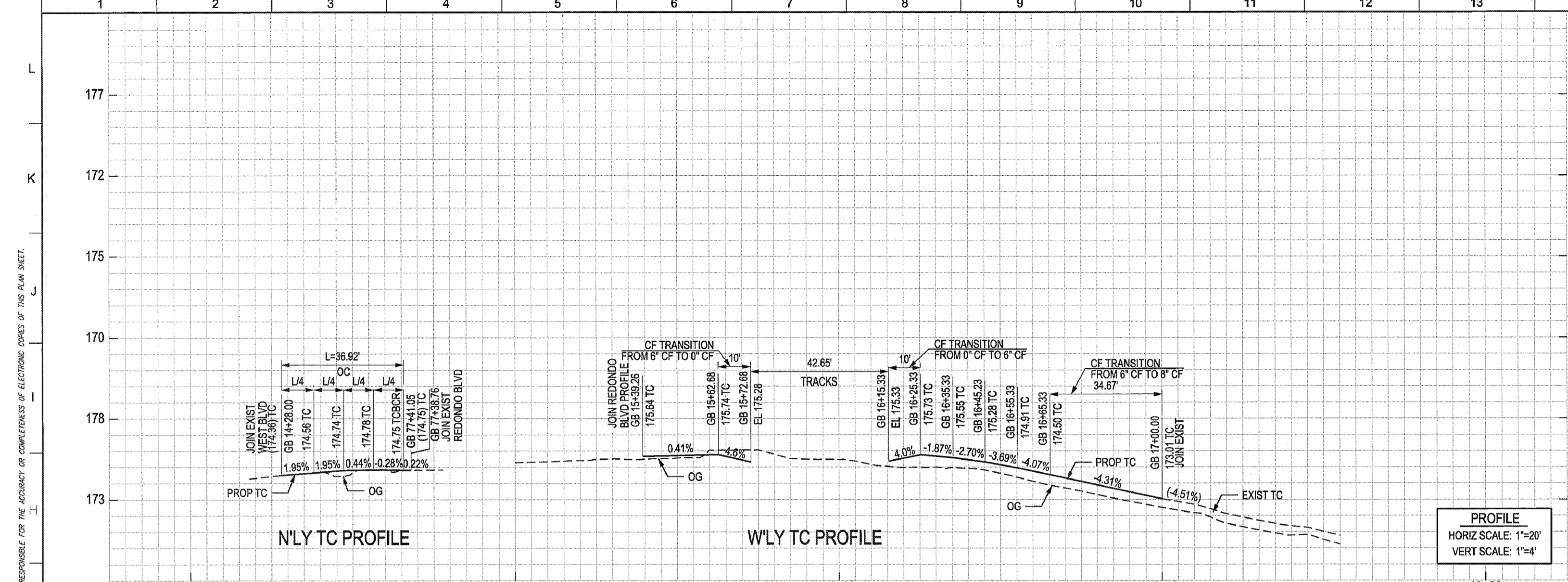
HNTB
 CONSULTANTS

D'LEON
 Consulting Engineers
[Signature]

CRENSHAW/LAX TRANSIT CORRIDOR PROJECT

STREET MODIFICATION PLAN HIGH STREET GRADE CROSSING PLAN & PROFILE STA 7+00 TO STA 10+00

CONTRACT NO. C0988
 DRAWING NO. CS-B1-147
 SCALE: 1"=20' (PLAN), 1"=4' (PROFILE)
 SHEET NO. 0



CURVE DATA TABLE				
No.	RADIUS	DELTA	LENGTH	TANGENT
27	35.00	60° 26' 41"	36.92	20.39

- CONSTRUCTION NOTES:**
- 2 REMOVE EXISTING CURB & GUTTER
 - 58 RELOCATE AND/OR ADJUST EXISTING TRAFFIC SIGNAL PULL BOX TO GRADE
 - 63 RELOCATE AND/OR ADJUST EXISTING GAS VALVE TO GRADE
 - 92 CONSTRUCT CURB & GUTTER "TYPE A2" PER SPPWC STD PLAN 120-2, "CF" PER PLAN
 - 96 CONSTRUCT CROSS AND LONGITUDINAL GUTTER PER SPPWC STD PLAN 122-2
 - 98 CONSTRUCT 4" THICK PCC SIDEWALK, JOINTS PER SPPWC STD PLAN 112-2
 - 104 CONSTRUCT CURB RAMP PER SPPWC STD PLAN 111-4, "CASE, TYPE, X & Y" PER PLAN



CRENSHAW/LAX TRANSIT CORRIDOR DESIGN/BUILD

APPROVED

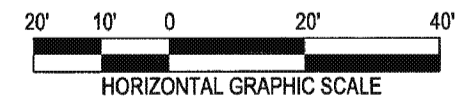
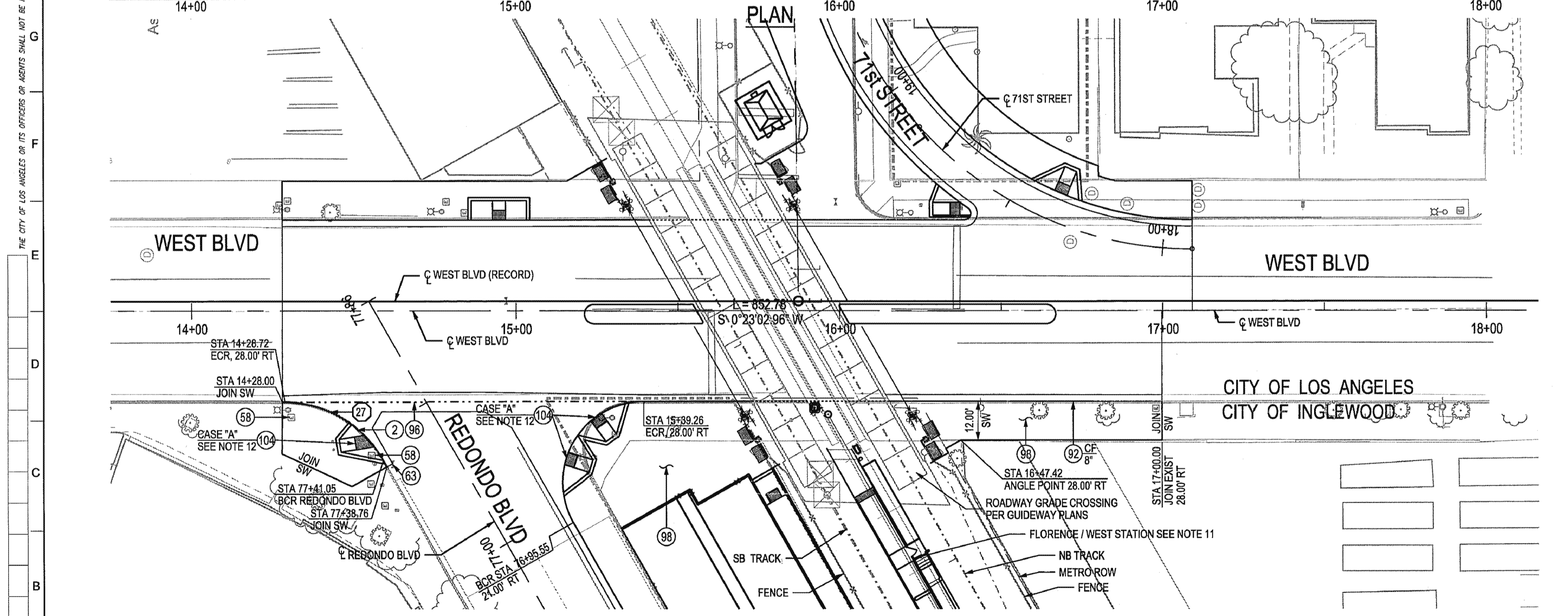
APPROVED AS NOTED, NO RESUBMITTAL REQUIRED

REJECTED, REVISE AND RESUBMIT

RECORD ONLY

Director, Construction MGR / Engineer: *Maria Suarez* Date: *1/24/16*

- NOTES:**
- SEE SIGNING AND STRIPING (GEO) PLANS FOR CROSSWALK LOCATIONS
 - FOR RAISED MEDIAN ISLAND DETAILS SEE, DWG. CDT-B1-124
 - REFER TO CS-B2-101 FOR ROADWAY IMPROVEMENTS IN CITY OF LOS ANGELES JURISDICTION
 - SB TRACK IS TRACK 3 AND NB TRACK IS TRACK 4
 - SEE CIVIL GUIDEWAY (CG) PLANS FOR CROSSING PANELS WITHIN GUIDEWAY
 - FOR RE-ESTABLISHING SURVEY MONUMENT, REFER TO METRO SPECIFICATIONS SECTION 01 32 23 3.01
 - THE CONTRACTOR SHALL VERIFY TIE-IN ELEVATIONS PRIOR TO CONSTRUCTION. IF ANY DISCREPANCIES ARE FOUND, THE CONTRACTOR SHALL NOTIFY THE ENGINEER.
 - FOR GRADE CROSSING DETAILS AND EQUIPMENT SEE DWG Q-B1-109
 - SEE DRAINAGE (CD) PLANS FOR STORM DRAIN RELATED WORK
 - SEE STREET LIGHTING (CL) PLANS FOR IMPROVEMENTS TO STREET LIGHTING.
 - SEE B1.4 STATIONS PACKAGE FOR PLATFORM AND PARK AND RIDE.
 - SEE CURB RAMP DETAILS DWG CDT-B1-110



CITY OF INGLEWOOD, CALIFORNIA PUBLIC WORKS DEPARTMENT

SUBMITTED BY/APPROVED BY: *Eloy Castillo* 1-19-16

ELOY CASTILLO, P.E. C69190, PRINCIPAL CIVIL ENGINEER

THE PREPARATION OF THIS DRAWING HAS BEEN FINANCED IN PART THROUGH A GRANT FROM THE U.S. DEPARTMENT OF TRANSPORTATION, FEDERAL TRANSIT ADMINISTRATION (FTA), UNDER THE FEDERAL TRANSIT ACT OF 1964, AS AMENDED, AND IN PART BY THE TAXES OF THE CITIZENS OF LOS ANGELES COUNTY AND OF THE STATE OF CALIFORNIA.

REV	DATE	BY	APP	REG NO	EXPIRES	SEAL HOLDER	DESCRIPTION
0	12/18/15						AFC SUBMITTAL

DESIGNED BY
RYAN BROWNE

DRAWN BY
JOHN MONG

CHECKED BY
WERNER ABREGO

IN CHARGE
DOMINGO LEON

DATE
12/18/15



LOS ANGELES COUNTY METROPOLITAN TRANSPORTATION AUTHORITY

Metro

WALSH-SHEA CORRIDOR CONSTRUCTORS

1777 Oakland Blvd.
Walnut Creek, CA 94596

HNTB

D'LEON Consulting Engineers

CRENSHAW/LAX TRANSIT CORRIDOR PROJECT

STREET MODIFICATION PLAN

WEST BLVD GRADE CROSSING

PLAN & PROFILE STA 14+28 TO STA 17+10

CONTRACT NO. **C0988**

DRAWING NO. **CS-B1-148**

SCALE: 1"=20' (PLAN), 1"=4' (PROFILE)

SHEET NO.