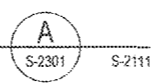


**ELEVATION NOTES:**

1. SEE CIVIL DRAWINGS FOR SOIL GRADING INFO.
2. WALL DRAINAGE SHALL BE PROVIDED WHERE SHOWN ON TRANSVERSE SECTIONS, UNLESS OTHERWISE NOTED. SEE FDN PLAN SHEETS FOR CONNECTING CROSS PIPE INFORMATION.

**LONG SECT AT LINE A-SOUTH**

1/8" = 1'-0"



MATCH LINE  
SEE DWG. B/S-2301

**M Metro**

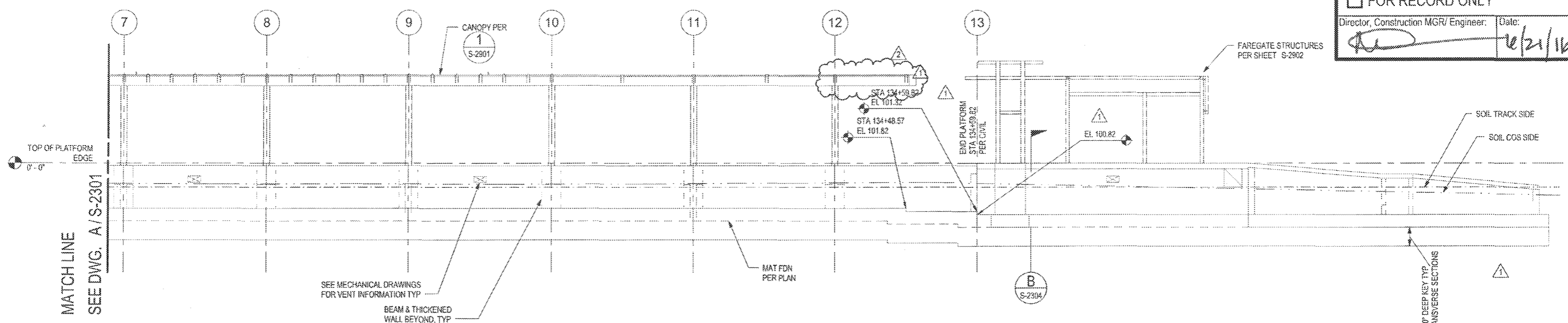
APPROVED

APPROVED AS NOTED  
(no resubmittal required)

REJECTED, REVISE & RESUBMIT

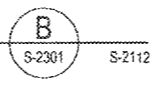
FOR RECORD ONLY

Director, Construction MGR/ Engineer: \_\_\_\_\_ Date: 6/21/16



**LONG SECT AT LINE A-NORTH**

1/8" = 1'-0"



PACKAGE A.4.H

THE PREPARATION OF THIS DRAWING HAS BEEN FINANCED IN PART THROUGH A GRANT FROM THE U.S. DEPARTMENT OF TRANSPORTATION FEDERAL TRANSIT ADMINISTRATION (FTA), UNDER THE FEDERAL TRANSIT ACT OF 1964, AS AMENDED, AND IN PART BY THE TAXES OF THE CITIZENS OF LOS ANGELES COUNTY AND OF THE STATE OF CALIFORNIA.

REV	DATE	BY	APP	REG NO	EXPIRES	SEAL HOLDER	DESCRIPTION
2	4/28/16	JAS	JL	38412	3/31/17	Jean M. Libby	NDC 86
1	3/7/16	JAS	JL	38412	3/31/17	JEAN LIBBY	NDC 064
0	5/15/15			38412	3/31/17	JEAN M. LIBBY	AFC SUBMITTAL

DESIGNED BY  
JA SCHAUDER  
DRAWN BY  
RB HINES  
CHECKED BY  
TE ALLEN  
IN CHARGE  
JIM LIBBY  
DATE  
5/18/15

A SIGNED & SEALED ORIGINAL OF REV 0 OF THIS DRAWING IS MAINTAINED BY WSCC

**M** LOS ANGELES COUNTY METROPOLITAN TRANSPORTATION AUTHORITY  
**Metro**

WALSH-SHEA CORRIDOR CONSTRUCTORS  
1777 Oakland Blvd.  
Walnut Creek, CA 94596

**HNTB**  
STEVE WHITAKER  
APPROVED

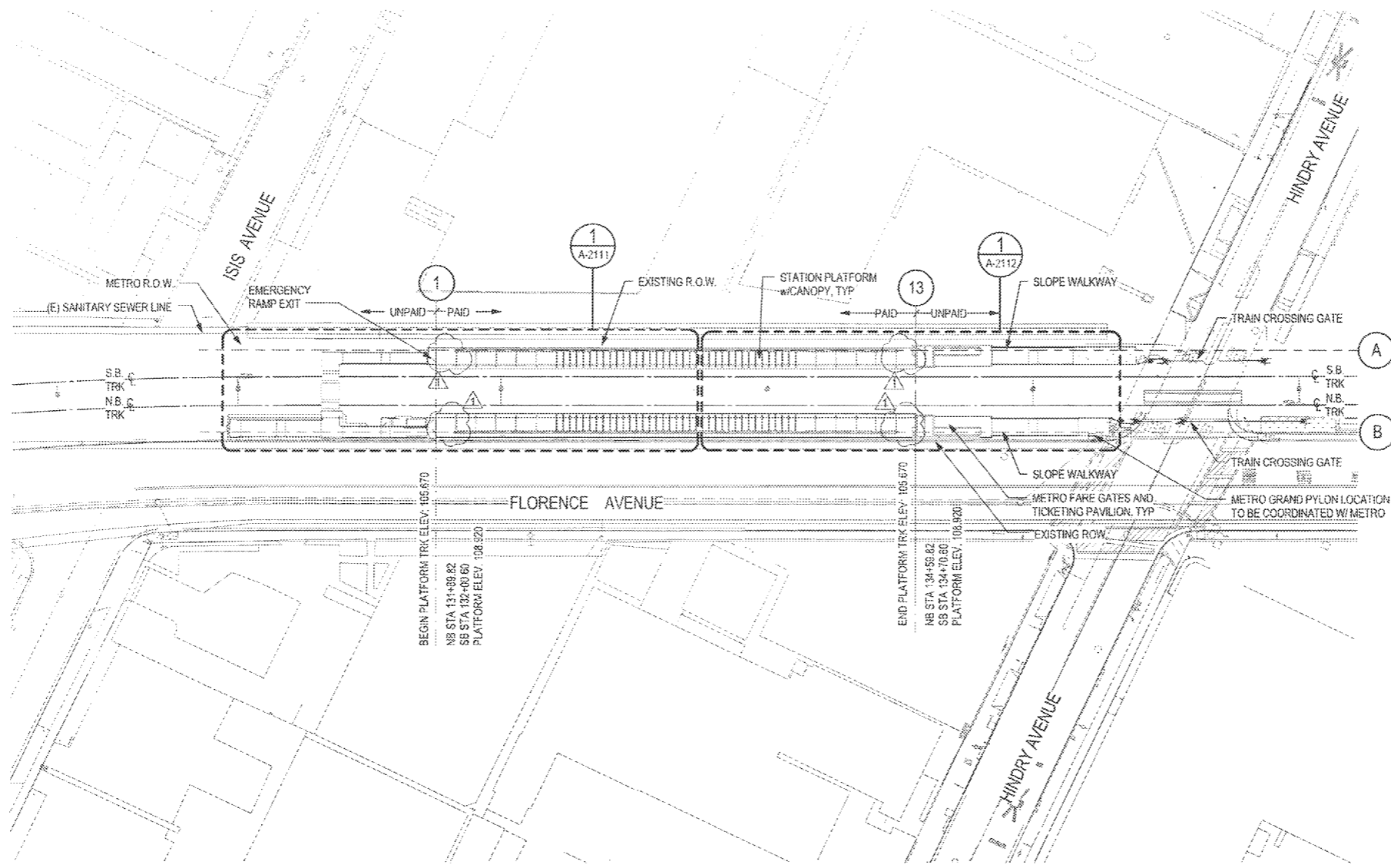
**MARTIN & LIBBY**  
JEAN LIBBY  
SUBMITTED

**CRENSHAW/LAX  
TRANSIT CORRIDOR PROJECT  
FLORENCE / HINDRY STATION  
LONGITUDINAL SECTION / SOUTH  
ELEVATION**

CONTRACT NO	C0988
DRAWING NO	S-2301
SCALE	1/8" = 1'-0"
SHEET NO	2

C:\oad\libby\lhw\hines\db\0217707C0988\2300\_s14.rvt 5/15/2016 10:47:15 AM





**SITE PLAN**  
1" = 40'-0"



**M Metro**

- APPROVED
- APPROVED AS NOTED (no resubmittal required)
- REJECTED, REVISE & RESUBMIT
- FOR RECORD ONLY

Director, Construction MGR/ Engineer: \_\_\_\_\_ Date: 4/21/16



KEY PLAN

PACKAGE A.4.H

THE PREPARATION OF THIS DRAWING HAS BEEN FINANCED IN PART THROUGH A GRANT FROM THE U.S. DEPARTMENT OF TRANSPORTATION, FEDERAL TRANSIT ADMINISTRATION (FTA), UNDER THE FEDERAL TRANSIT ACT OF 1964, AS AMENDED, AND IN PART BY THE TAXES OF THE CITIZENS OF LOS ANGELES COUNTY AND OF THE STATE OF CALIFORNIA.

REV	DATE	BY	APP	REG NO	EXPIRES	SEAL HOLDER	DESCRIPTION
1	4/20/16	PAH	RP	C34273	11/30/17	[Signature]	NDC 086
0	5/18/15			C25553	3/31/17	E. SANCHEZ	AFC SUBMITTAL

DESIGNED BY  
E. SANCHEZ  
DRAWN BY  
R. RESURRECCION  
CHECKED BY  
S. SOGHOMONIAN  
IN CHARGE  
E. SANCHEZ  
DATE  
5/18/15

A SIGNED & SEALED ORIGINAL OF REV 0 OF THIS DRAWING IS MAINTAINED BY WSCC

**M Metro** LOS ANGELES COUNTY METROPOLITAN TRANSPORTATION AUTHORITY

WALSH-SHEA CORRIDOR CONSTRUCTORS  
1777 Oakland Blvd.  
Walnut Creek, CA 94596

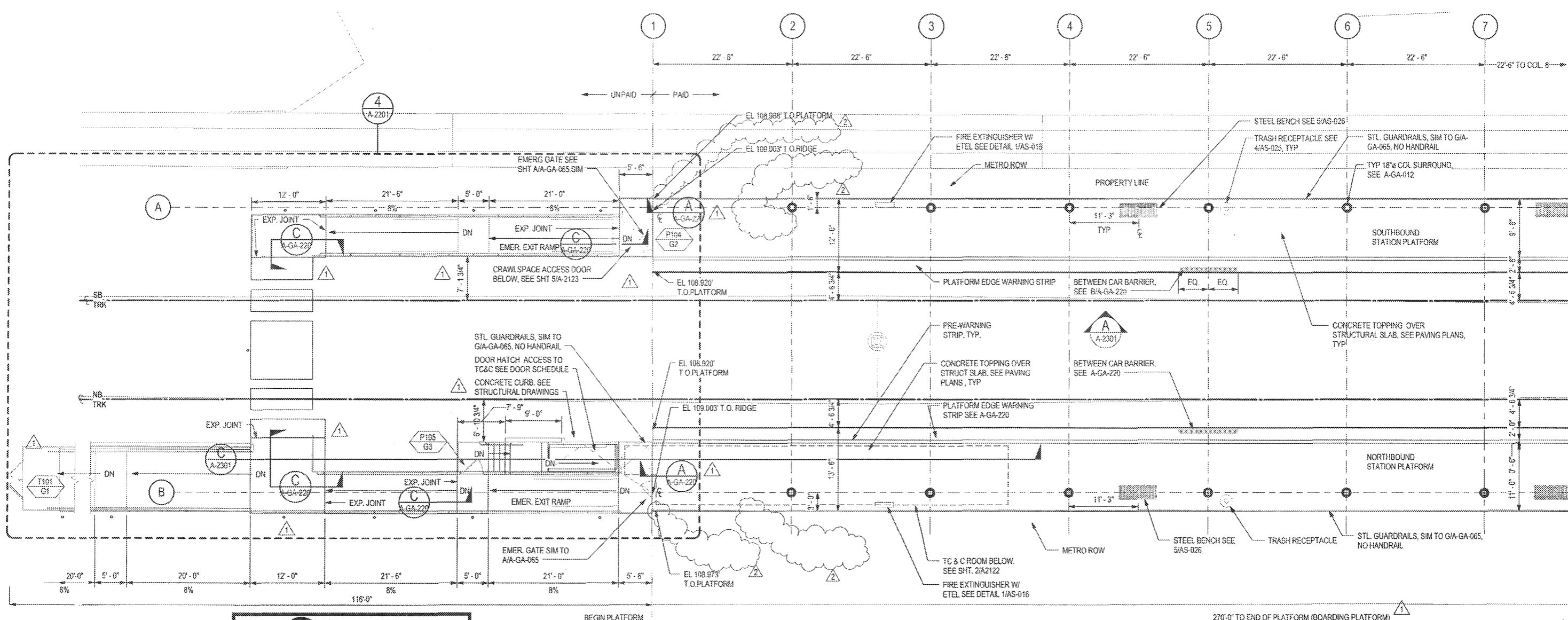
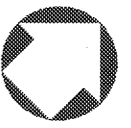
**HNTB**  
STEVE WHITAKER  
APPROVED

**RAM**  
EFRAIN SANCHEZ  
SUBMITTED

CRENSHAW/LAX  
TRANSIT CORRIDOR PROJECT  
FLORENCE / HINDRY STATION  
SITE PLAN

CONTRACT NO.	C0988
DRAWING NO.	A-2001
SCALE	1" = 40'-0"
SHEET NO.	1

C:\Users\stahavens\Documents\C0988a2000\_a14\_atavens.rvt 05-May-16 3:31:28 PM



**M Metro**

APPROVED

APPROVED AS NOTED  
(no resubmittal required)

REJECTED, REVISE & RESUBMIT

FOR RECORD ONLY

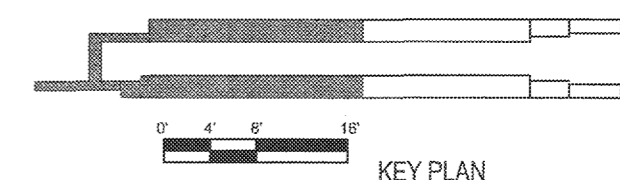
Director, Construction MGR/ Engineer: *[Signature]* Date: 6/21/16



**PARTIAL PLATFORM PLAN**

1/8" = 1'-0"

1 A-2111 A-2001



PACKAGE A 4.H

THE PREPARATION OF THIS DRAWING HAS BEEN FINANCED IN PART THROUGH A GRANT FROM THE U.S. DEPARTMENT OF TRANSPORTATION, FEDERAL TRANSIT ADMINISTRATION (FTA), UNDER THE FEDERAL TRANSIT ACT OF 1964, AS AMENDED, AND IN PART BY THE TAXES OF THE CITIZENS OF LOS ANGELES COUNTY AND OF THE STATE OF CALIFORNIA.

REV	DATE	BY	APP	RES NO	EXPIRES	SEAL HOLDER	DESCRIPTION
A	4/29/16	AH	RP	C34273	11/30/17	[Signature]	NDC 086
B	3/7/16	ES	ES	C25553	3/31/17	E. SANCHEZ	NDC 084
D	5/18/15			C25553	3/31/17	E. SANCHEZ	AFC SUBMITTAL

DESIGNED BY: E. SANCHEZ  
 DRAWN BY: R. RESURRECCION  
 CHECKED BY: S. SOGHOMONIAN  
 IN CHARGE: E. SANCHEZ  
 DATE: 5/18/15

A SIGNED & SEALED ORIGINAL OF REV 0 OF THIS DRAWING IS MAINTAINED BY WSCC

**M LOS ANGELES COUNTY METROPOLITAN TRANSPORTATION AUTHORITY**

**Metro**

WALSH-SHEA CORRIDOR CONSTRUCTORS

1777 Oakland Blvd.  
Walnut Creek, CA 94596

**HNTB**

STEVE WHITAKER APPROVED

**HRM**

EFRAIN SANCHEZ SUBMITTED

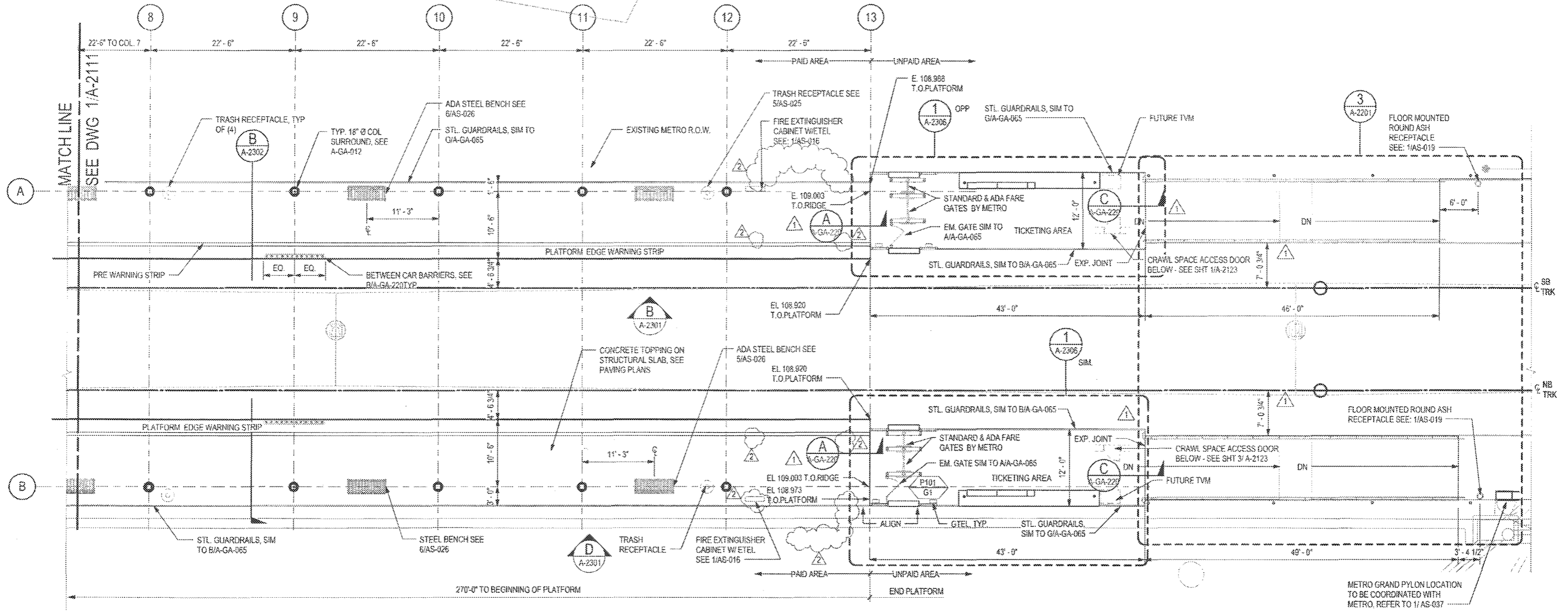
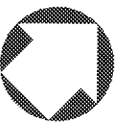
**CRENSHAW/LAX TRANSIT CORRIDOR PROJECT**

**FLORENCE / HINDRY STATION**

**PLATFORM LEVEL PLAN 1 OF 2**

CONTRACT NO.	C0988
DRAWING NO.	A-2111
SCALE	1/8" = 1'-0"
SHEET NO.	2

C:\Users\stevens\Documents\C0988a2000\_a14\_ahavans.rvt 05-May-16 4:26:37 PM



**M Metro**

APPROVED

APPROVED AS NOTED  
(no resubmittal required)

REJECTED, REVISE & RESUBMIT

FOR RECORD ONLY

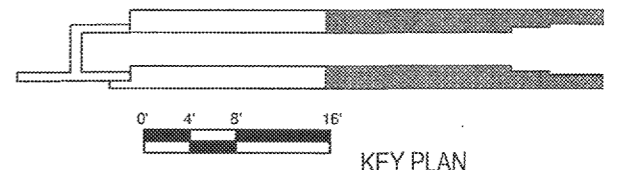
Director, Construction MGR/Engineer: \_\_\_\_\_ Date: 6/21/17



**PARTIAL PLATFORM PLAN**

1/8" = 1'-0"

1 A-2112 A-2001



PACKAGE A.4.H

THE PREPARATION OF THIS DRAWING HAS BEEN FINANCED IN PART THROUGH A GRANT FROM THE U.S. DEPARTMENT OF TRANSPORTATION, FEDERAL TRANSIT ADMINISTRATION (FTA), UNDER THE FEDERAL TRANSIT ACT OF 1964, AS AMENDED, AND IN PART BY THE TAXES OF THE CITIZENS OF LOS ANGELES COUNTY AND OF THE STATE OF CALIFORNIA.

REV	DATE	BY	APP	REQ NO	EXPIRES	SEAL HOLDER	DESCRIPTION
1	4/29/16	PH	RP	C34273	11/30/17		NDC 086
2	3/7/16	ES	ES	C25563	3/31/17	E. SANCHEZ	NDC 084
3	5/18/15			C25553	3/31/17	E. SANCHEZ	AFC SUBMITTAL

DESIGNED BY  
E. SANCHEZ

DRAWN BY  
R. RESURRECCION

CHECKED BY  
S. SOGHOMONIAN

IN CHARGE  
E. SANCHEZ

DATE  
5/18/15

A SIGNED & SEALED ORIGINAL OF REV 0 OF THIS DRAWING IS MAINTAINED BY WSCC

**M Metro** LOS ANGELES COUNTY METROPOLITAN TRANSPORTATION AUTHORITY

WALSH-SHEA CORRIDOR CONSTRUCTORS

1777 Oakland Blvd  
Walnut Creek, CA 94596

**HNTB** STEVE WHITAKER APPROVED

**MIRM** EFRAIN SANCHEZ SUBMITTED

CRENSHAW/LAX TRANSIT CORRIDOR PROJECT  
FLORENCE / HINDRY STATION  
PLATFORM LEVEL PLAN 2 OF 2

CONTRACT NO. C0988

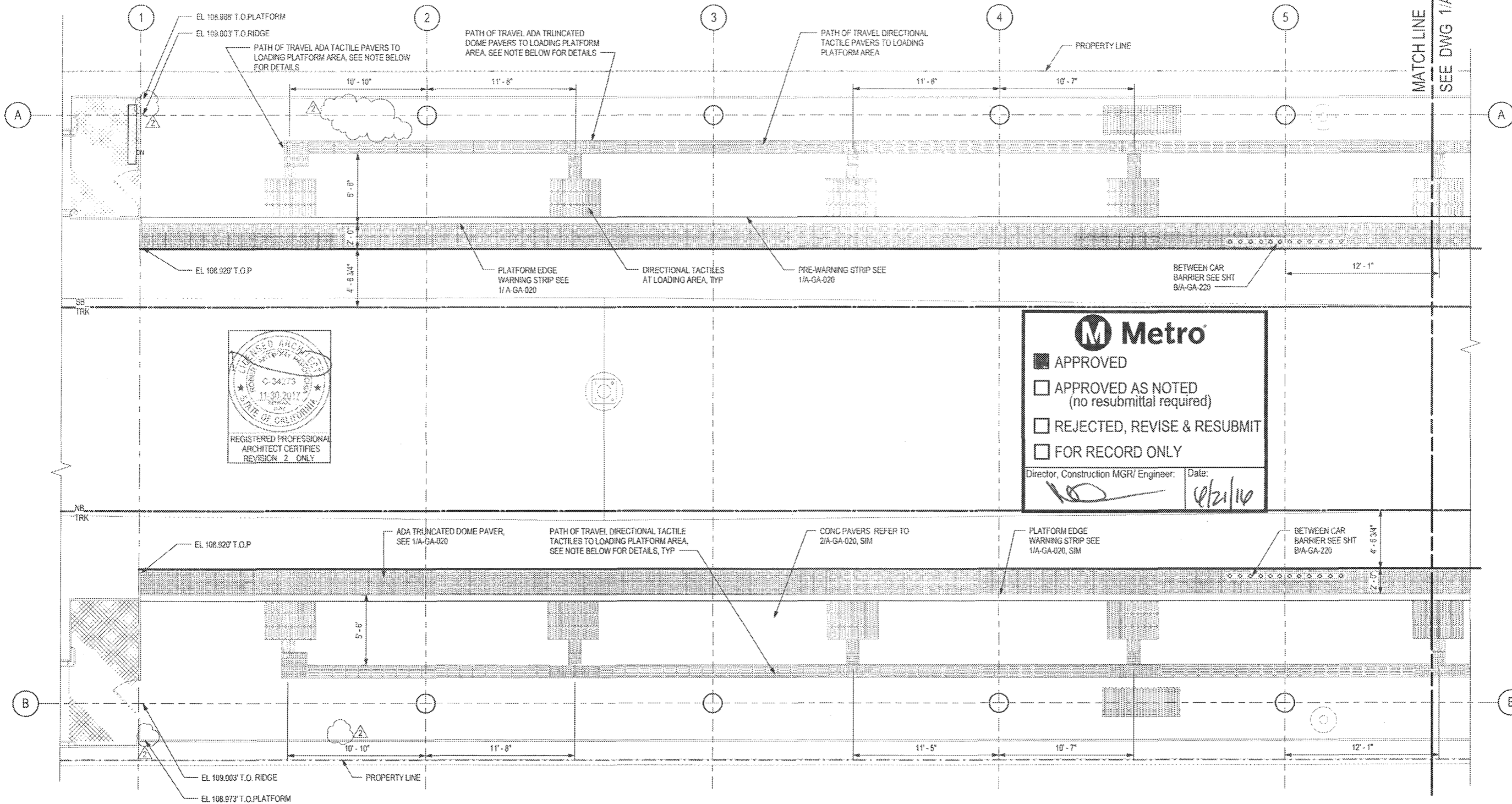
DRAWING NO. A-2112

SCALE 1/8" = 1'-0"

SHEET NO.

REV 2

C:\Users\ahavens\Documents\C0988a2001\_a14\_ahavens.rvt 05-May-16 4:31:38 PM



**M Metro**

APPROVED

APPROVED AS NOTED  
(no resubmittal required)

REJECTED, REVISE & RESUBMIT

FOR RECORD ONLY

Director, Construction MGR/ Engineer: Date: 6/21/16



**LEGEND**

- SEALED CONCRETE
- 1' X 1' TRUNCATED DOME PATTERN ADA TACTILE. REFER TO SHT AS-038 & AS-039 FOR DETAILS
- 1' X 1' DIRECTIONAL BAR PATTERN ADA TACTILE. REFER TO SHT AS-038 & AS-039 FOR DETAILS

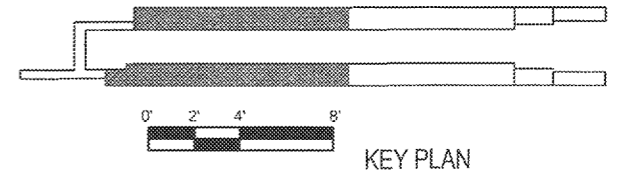
**NOTE**

2 COLOR ARCHITECTURAL TOPPING SLAB PATTERN NOT RELEASED FOR CONSTRUCTION, TO BE APPROVED BY METRO THROUGH NDC.

**PARTIAL PAVING PLAN**

1/4" = 1'-0"

1  
A-2152 A-2123



PACKAGE A.4.H

THE PREPARATION OF THIS DRAWING HAS BEEN FINANCED IN PART THROUGH A GRANT FROM THE U.S. DEPARTMENT OF TRANSPORTATION, FEDERAL TRANSIT ADMINISTRATION (FTA), UNDER THE FEDERAL TRANSIT ACT OF 1964, AS AMENDED, AND IN PART BY THE TAXES OF THE CITIZENS OF LOS ANGELES COUNTY AND OF THE STATE OF CALIFORNIA.

REV	DATE	BY	APP	REG NO	EXPIRES	SEAL HOLDER	DESCRIPTION
1	4/29/16	PH	RS	C34273	11/30/17		NDC 086
2	3/7/16	ES	ES	C25553	3/31/17	E. SANCHEZ	NDC 064
3	5/18/15			C25553	3/31/17	E. SANCHEZ	AFC SUBMITTAL

DESIGNED BY  
E. SANCHEZ

DRAWN BY  
R. RESURRECCION

CHECKED BY  
S. SOGHOMONIAN

IN CHARGE  
E. SANCHEZ

DATE  
5/18/15

A SIGNED & SEALED ORIGINAL OF REV 0 OF THIS DRAWING IS MAINTAINED BY WSSC

**M Metro** LOS ANGELES COUNTY METROPOLITAN TRANSPORTATION AUTHORITY

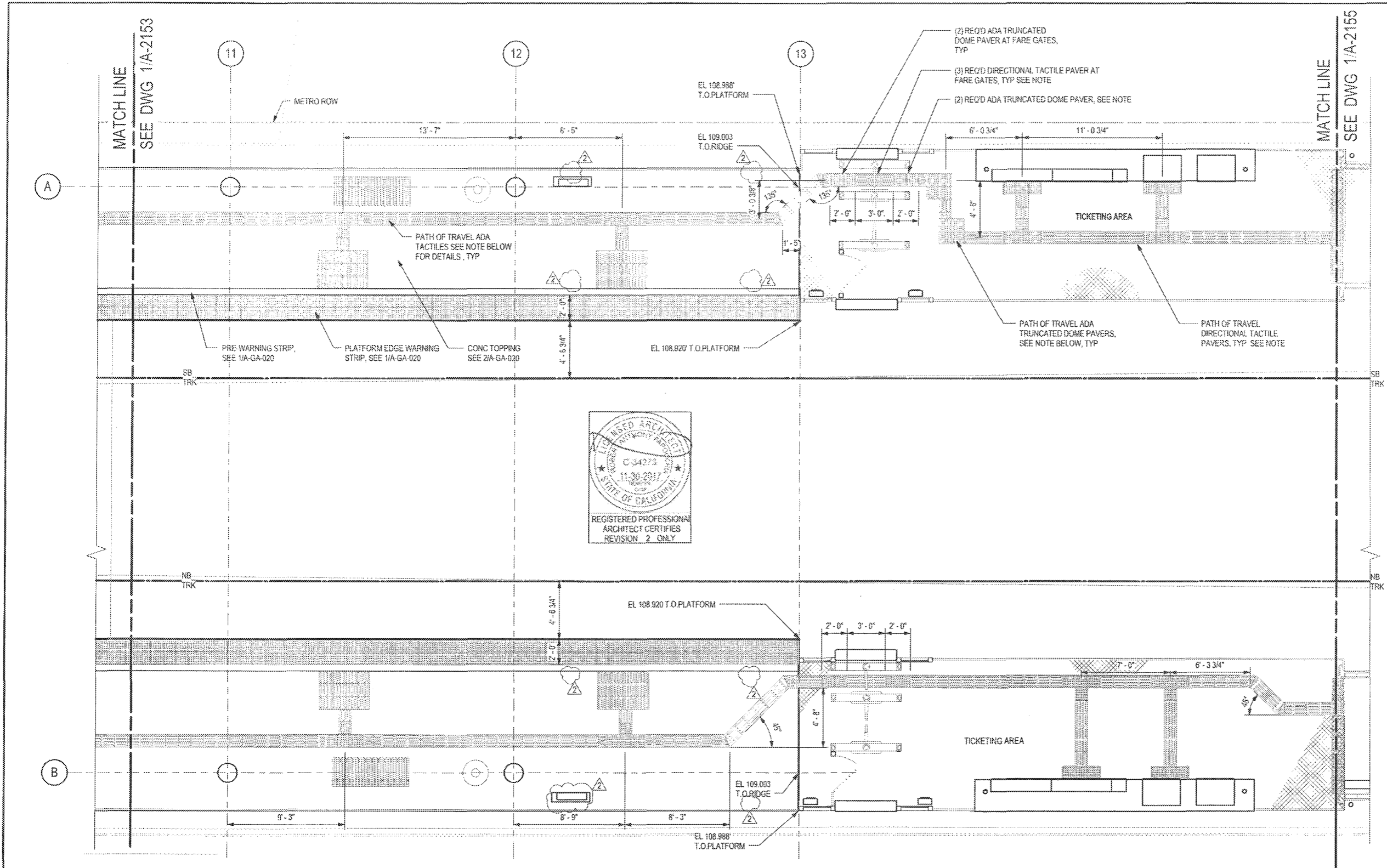
WALSH-SHEA CORRIDOR CONSTRUCTORS 1777 Oakland Blvd. Walnut Creek, CA 94596

**HNTB** STEVE WHITAKER APPROVED

**MJM** EFRAIN SANCHEZ SUBMITTED

CRENSHAW/LAX TRANSIT CORRIDOR PROJECT  
FLORENCE / HINDRY STATION  
PAVING PLAN 1 OF 4

CONTRACT NO <b>C0988</b>	REV <b>2</b>
DRAWING NO <b>A-2152</b>	SCALE <b>1/4" = 1'-0"</b>
SHEET NO	



**M Metro**

- APPROVED
- APPROVED AS NOTED (no resubmittal required)
- REJECTED, REVISE & RESUBMIT
- FOR RECORD ONLY

Director, Construction MGR/ Engineer: *[Signature]* Date: 4/21/16

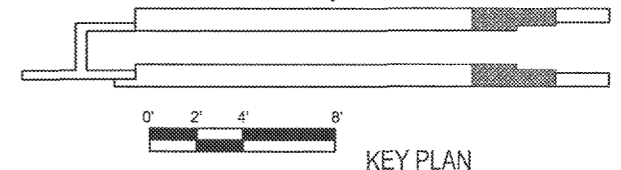
**LEGEND**

	SEALED CONCRETE
	1' X 1' TRUNCATED DOME PATTERN ADA TACTILE. REFER TO SHT AS-036 & AS-039 FOR DETAILS
	1' X 1' DIRECTIONAL BAR PATTERN ADA TACTILE. REFER TO SHT AS-036 & AS-039 FOR DETAILS

**NOTE**

2 COLOR ARCHITECTURAL TOPPING SLAB PATTERN NOT RELEASED FOR CONSTRUCTION, TO BE APPROVED BY METRO THROUGH NDC.

**PARTIAL PAVING PLAN**  
1/4" = 1'-0"



THE PREPARATION OF THIS DRAWING HAS BEEN FINANCED IN PART THROUGH A GRANT FROM THE U.S. DEPARTMENT OF TRANSPORTATION, FEDERAL TRANSIT ADMINISTRATION (FTA), UNDER THE FEDERAL TRANSIT ACT OF 1964, AS AMENDED, AND IN PART BY THE TAXES OF THE CITIZENS OF LOS ANGELES COUNTY AND OF THE STATE OF CALIFORNIA.

REV	DATE	BY	APP	REG NO	EXPIRES	SEAL HOLDER	DESCRIPTION
1	4/28/16	AH	RP	C34273	11/30/17	[Signature]	NDC 086
2	3/7/16	E.S.	E.S.	C25553	3/31/17	E. SANCHEZ	NDC 064
0	5/18/15			C25553	3/31/17	E. SANCHEZ	AFC SUBMITTAL

DESIGNED BY: E. SANCHEZ  
 DRAWN BY: R. RESURRECCION  
 CHECKED BY: S. SOGHOMONIAN  
 IN CHARGE: E. SANCHEZ  
 DATE: 5/18/15

**M** LOS ANGELES COUNTY METROPOLITAN TRANSPORTATION AUTHORITY  
**Metro**

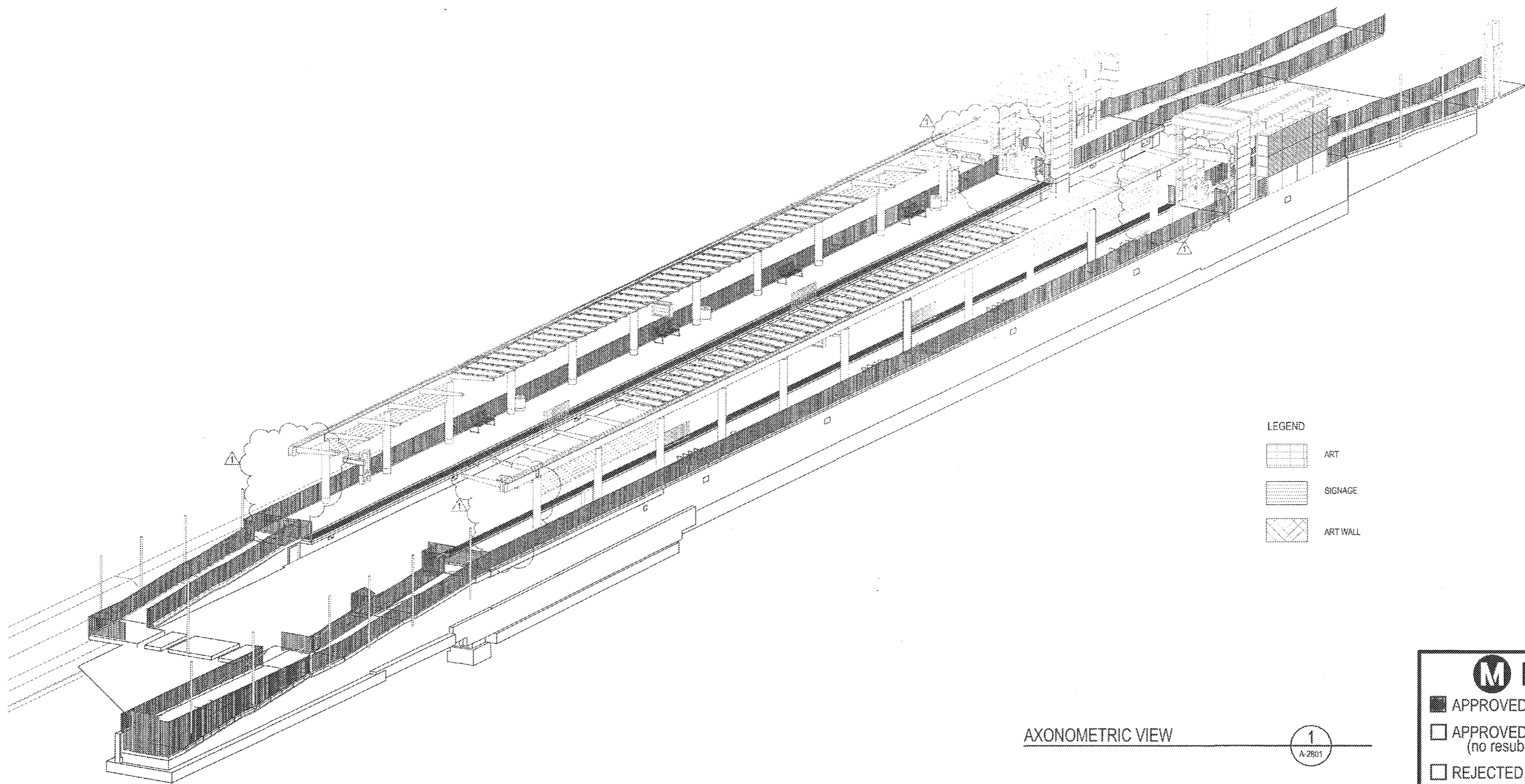
WALSH-SHEA CORRIDOR CONSTRUCTORS  
 1777 Oakland Blvd.  
 Walnut Creek, CA 94596

**HNTB**  
 STEVE WHITAKER  
 APPROVED

**EFRAIN SANCHEZ**  
 SUBMITTED

CRENSHAW/LAX  
 TRANSIT CORRIDOR PROJECT  
 FLORENCE / HINDRY STATION  
 PAVING PLAN 3 OF 4

CONTRACT NO.	C0988
DRAWING NO.	A-2154
SCALE	1/4" = 1'-0"
SHEET NO.	2



- LEGEND
- ART
  - SIGNAGE
  - ART WALL

AXONOMETRIC VIEW 1  
A-2801

**M Metro**

APPROVED

APPROVED AS NOTED  
(no resubmittal required)

REJECTED, REVISE & RESUBMIT

FOR RECORD ONLY

Director, Construction MGR/ Engineer: Date: 6/21/16

PACKAGE A.4.H



REGISTERED PROFESSIONAL ARCHITECT CERTIFIES REVISION 1 ONLY

A SIGNED & SEALED ORIGINAL OF REV 0 OF THIS DRAWING IS MAINTAINED BY WSCC

**M Metro** LOS ANGELES COUNTY METROPOLITAN TRANSPORTATION AUTHORITY

DESIGNED BY: E. SANCHEZ  
 DRAWN BY: R. RESURRECCION  
 CHECKED BY: S. SOGHOMONIAN  
 IN CHARGE: E. SANCHEZ  
 DATE: 5/18/15

WALSH-SHEA CORRIDOR CONSTRUCTORS  
 1777 Oakland Blvd.  
 Walnut Creek, CA 94596

**HNTB** STEVE WHITAKER APPROVED  
**MAM** EFRAIN SANCHEZ SUBMITTED

CRENSHAW/LAX  
 TRANSIT CORRIDOR PROJECT  
 FLORENCE / HINDRY STATION  
 AXONOMETRIC VIEW - PLATFORM LEVEL

CONTRACT NO.	C0988
DRAWING NO.	A-2801
SCALE	NO SCALE
SHEET NO.	1

THE PREPARATION OF THIS DRAWING HAS BEEN FINANCED IN PART THROUGH A GRANT FROM THE U.S. DEPARTMENT OF TRANSPORTATION, FEDERAL TRANSIT ADMINISTRATION (FTA), UNDER THE FEDERAL TRANSIT ACT OF 1964, AS AMENDED, AND IN PART BY THE TAXES OF THE CITIZENS OF LOS ANGELES COUNTY AND OF THE STATE OF CALIFORNIA.

REV	DATE	BY	APP	REG NO	EXPIRES	SEAL HOLDER	DESCRIPTION
1	4/29/16	AH	RP	C34273	11/30/17		NDC 086
0	5/18/15			C25553	3/31/17	E. SANCHEZ	AFC SUBMITTAL