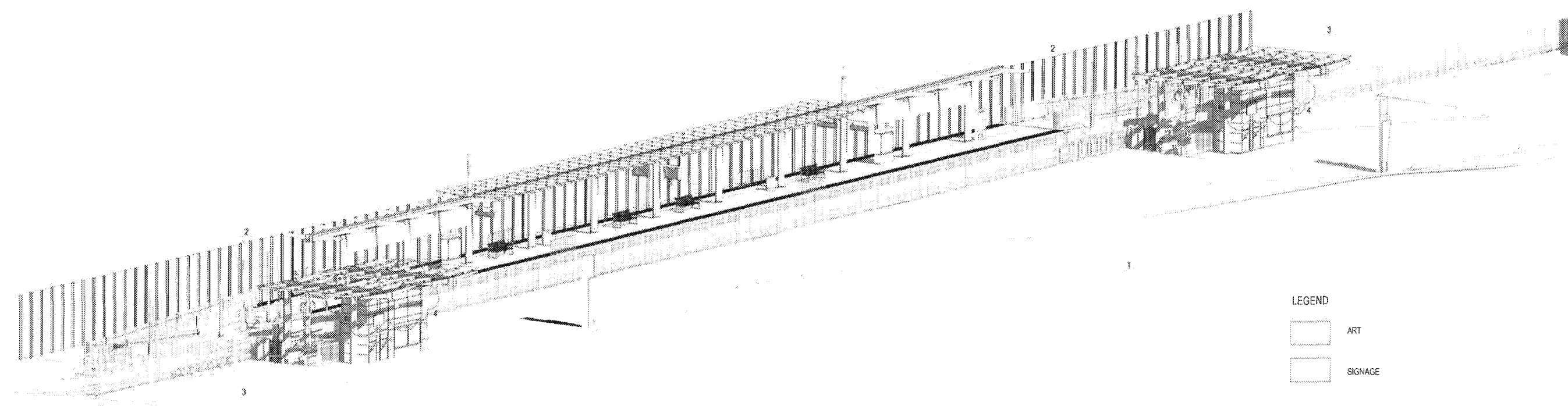


**CRENSHAW/LAX TRANSIT CORRIDOR
DESIGN/BUILD**

- APPROVED
- APPROVED AS NOTED,
NO RESUBMITTAL REQUIRED
- REJECTED, REVISE AND RESUBMIT
- RECORD ONLY

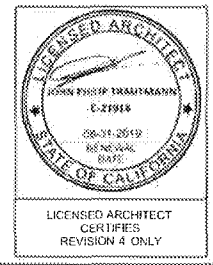
Director, Construction MGR / Engineer: *Mark Henderson* Date: 4/19/18



- LEGEND
- ART
 - SIGNAGE

AXONOMETRIC VIEW

1
A-3801



PACKAGE B-1.4

THE PREPARATION OF THIS DRAWING HAS BEEN FINANCED IN PART THROUGH A GRANT FROM THE U.S. DEPARTMENT OF TRANSPORTATION FEDERAL TRANSIT ADMINISTRATION (FTA) UNDER THE FEDERAL TRANSIT ACT OF 1964, AS AMENDED, AND IN PART BY THE TAXES OF THE CITIZENS OF LOS ANGELES COUNTY AND OF THE STATE OF CALIFORNIA.

REV	DATE	BY	APP	ISS NO	EXPIRES	SIGNAL NUMBER	DESCRIPTION
4	7/24/17	SL	JPT	C21914	8/31/19		NDC 334
3	12/8/16	JT	JT	C21914	8/31/17		NDC 190
2	4/29/16	AH	RP	C34273	11/30/17		NDC 086
1	3/11/16	AH	RP	C34273	11/30/17		NDC 081
0	5/21/15			C25553	3/31/17		AFC SUBMITTAL

DESIGNED BY
E. SANCHEZ
DRAWN BY
R. RESURRECCION
CHECKED BY
S. SOGHOMONIAN
IN CHARGE
E. SANCHEZ
DATE
5/21/15

A SIGNED & SEALED ORIGINAL OF REV 0 OF THIS DRAWING IS MAINTAINED BY WSCC

M LOS ANGELES COUNTY METROPOLITAN TRANSPORTATION AUTHORITY
Metro

WALSH-SHEA CORRIDOR CONSTRUCTORS
1777 Oakland Blvd.
Walnut Creek CA 94596

HNTB
STEVE WHITAKER
APPROVED

FRAM
EFRAIN SANCHEZ
APPROVED

CONTRACT NO. C0988
DRAWING NO. A-3801
SCALE NO SCALE
SHEET NO. 4

CRENSHAW/LAX
TRANSIT CORRIDOR PROJECT
FLORENCE / LA BREA STATION
AXONOMETRIC VIEW - PLATFORM LEVEL