

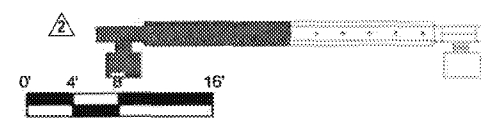
**PARTIAL PLATFORM PLAN**  
1/8" = 1'-0"

**M Metro**

- APPROVED
- APPROVED AS NOTED (no resubmittal required)
- REJECTED, REVISE & RESUBMIT
- FOR RECORD ONLY

Director, Construction MGR/ Engineer: *[Signature]* Date: *6/23/16*

301 D1 DOORTAG SEE SHEET A-3501



PACKAGE B-1.4

REV	DATE	BY	APP	REG NO	EXPIRES	SEAL HOLDER	DESCRIPTION
1	4/29/16	AH	RP	C34273	11/30/17	R. PAPOCCHIA	NDC 086
2	3/11/16	AH	RP	C34273	11/30/17	R. PAPOCCHIA	NDC 081
3	10/21/15	ES	ES	C25553	03/31/17	E. SANCHEZ	NDC 085
0	5/21/15			C25553	03/31/17	E. SANCHEZ	AFC SUBMITTAL

DESIGNED BY: E. SANCHEZ  
 DRAWN BY: R. RESURRECCION  
 CHECKED BY: S. SOGHMONIAN  
 IN CHARGE: E. SANCHEZ  
 DATE: 5/21/15

A SIGNED & SEALED ORIGINAL OF REV 0 OF THIS DRAWING IS MAINTAINED BY WSCC

**M Metro** LOS ANGELES COUNTY METROPOLITAN TRANSPORTATION AUTHORITY

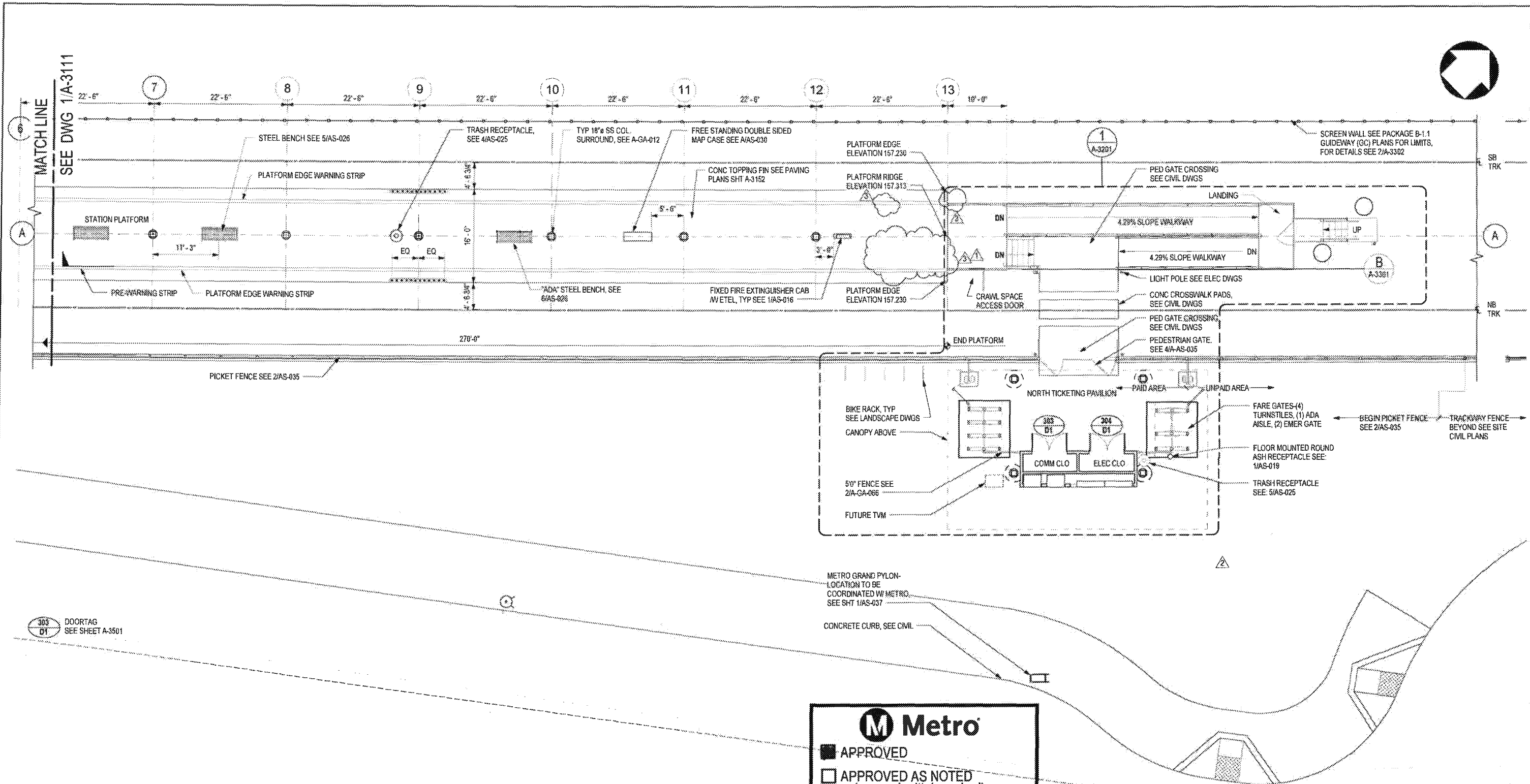
**WALSH-SHEA CORRIDOR CONSTRUCTORS**  
1777 Oakland Blvd.  
Walnut Creek, CA 94596

**HNTB** STEVE WHITAKER APPROVED

**EFRAN SANCHEZ** SUBMITTED

**CRENSHAW/LAX TRANSIT CORRIDOR PROJECT**  
FLORENCE / LA BREA STATION  
PLATFORM LEVEL PLAN

CONTRACT NO. C0988	REV 3
DRAWING NO. A-3111	SCALE 1/8" = 1'-0"
SHEET 805	



**M Metro**

- APPROVED
- APPROVED AS NOTED (no resubmittal required)
- REJECTED, REVISE & RESUBMIT
- FOR RECORD ONLY

Director, Construction MGR/ Engineer: *[Signature]* Date: *10/23/16*

**PARTIAL PLATFORM PLAN**  
1/8" = 1'-0"

**PACKAGE B-1.4**

REV	DATE	BY	APP	REG NO	EXPIRES	SEAL HOLDER	DESCRIPTION
0	5/21/15			C25553	03/31/17	E. SANCHEZ	AFC SUBMITTAL
1	10/21/15	ES	ES	C25553	03/31/17	E. SANCHEZ	
2	3/11/16	AH	RP	C34273	11/30/17	R. PAPOCCHIA	NDC 081
3	4/29/16	AH	RP	C34273	11/30/17	R. PAPOCCHIA	NDC 086

**M Metro** LOS ANGELES COUNTY METROPOLITAN TRANSPORTATION AUTHORITY

**WALSH-SHEA CORRIDOR CONSTRUCTORS**  
1777 Oakland Blvd.  
Walnut Creek, CA 94596

**HNTB**  
STEVE WHITAKER  
APPROVED

**EFRAIN SANCHEZ**  
SUBMITTED

A SIGNED & SEALED ORIGINAL OF REV 0 OF THIS DRAWING IS MAINTAINED BY WSCC

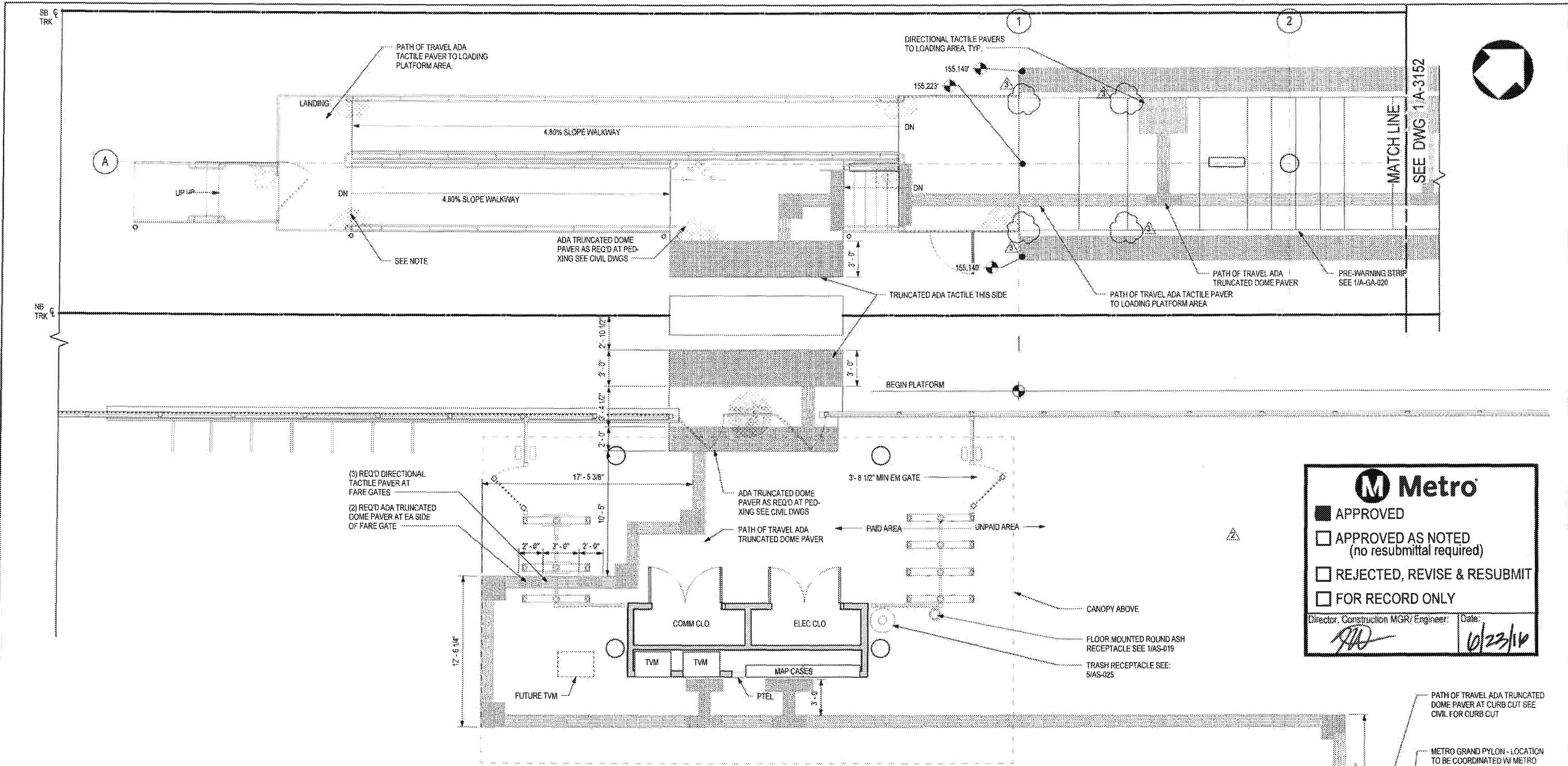
**CRENSHAW/LAX TRANSIT CORRIDOR PROJECT**  
**FLORENCE / LA BREA STATION**  
**PLATFORM LEVEL PLAN**

CONTRACT NO: **C0988**

DRAWING NO: **A-3112**

SCALE: **1/8" = 1'-0"**

SHEET NO: **3**



**M Metro**

- APPROVED
- APPROVED AS NOTED (no resubmittal required)
- REJECTED, REVISE & RESUBMIT
- FOR RECORD ONLY

Director, Construction MGR/Engineer: *[Signature]* Date: 6/23/16

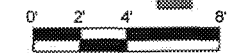
**LEGEND**

	SEALED CONCRETE
	1' X 1' TRUNCATED DOME PATTERN ADA TACTILE. REFER TO SHT AS-038 & AS-039 FOR DETAILS
	1' X 1' DIRECTIONAL BAR PATTERN ADA TACTILE. REFER TO SHT AS-038 & AS-039 FOR DETAILS

**NOTE**

COLOR ARCHITECTURAL TOPPING SLAB PATTERN NOT RELEASED FOR CONSTRUCTION, TO BE APPROVED BY METRO THROUGH NDC.

**PARTIAL PAVING PLAN**  
1/4" = 1'-0"



PACKAGE B-1.4

REV	DATE	BY	APP	REG NO	EXPIRES	REAL HOLDER	DESCRIPTION
1	4/29/16	AH	RP	C34273	11/30/17	R. PAPOCCHIA	NDC 086
2	3/11/16	AH	RP	C34273	11/30/17	R. PAPOCCHIA	NDC 081
3	10/21/15	ES	ES	C25553	03/31/17	E. SANCHEZ	NDC 065
0	9/21/15			C25553	03/31/17	E. SANCHEZ	AFC SUBMITTAL

DESIGNED BY: E. SANCHEZ  
 DRAWN BY: R. RESURRECCION  
 CHECKED BY: S. SOGHOMONIAN  
 IN CHARGE: E. SANCHEZ  
 DATE: 5/21/15

A SIGNED & SEALED ORIGINAL OF REV 0 OF THIS DRAWING IS MAINTAINED BY WSCC

**M Metro**  
 LOS ANGELES COUNTY METROPOLITAN TRANSPORTATION AUTHORITY

**WALSH-SHEA CORRIDOR CONSTRUCTORS**  
 1777 Oakland Blvd.  
 Walnut Creek, CA 94596

**HNTB**  
 STEVE WHITAKER  
 APPROVED

**MTM**  
 EFRAIN SANCHEZ  
 SUBMITTED

**CRENSHAW/LAX**  
**TRANSIT CORRIDOR PROJECT**  
 FLORENCE / LA BREA STATION  
 PARTIAL PAVING PLAN 1 OF 3

CONTRACT NO:	C0988
DRAWING NO:	A-3151
SCALE:	1/4" = 1'-0"
SHEET NO:	3

12  
MATCH LINE  
SEE DWG 2/A-3152

PLATFORM EDGE  
ELEVATION 157.230

13

PLATFORM RIDGE  
ELEVATION 157.313

ADA TRUNCATED DOME PAVER  
AS REQ'D AT PED-XING SEE  
NOTE FOR DETAILS

4.28% SLOPE WALKWAY

4.29% SLOPE WALKWAY

PLATFORM EDGE  
ELEVATION 157.230

ADA TRUNCATED DOME PAVER AS  
REQ'D AT PED-XING SEE NOTE FOR  
DETAILS

ADA TRUNCATED DOME PAVER AS  
REQ'D AT PED-XING SEE NOTE FOR  
DETAILS

END PLATFORM

(3) REQ'D DIRECTIONAL TACTILE  
PAVER AT FARE GATES, SEE  
NOTE FOR DETAILS

(2) REQ'D ADA TRUNCATED DOME  
PAVER AT EA SIDES OF FARE  
GATE, SEE NOTE FOR DETAILS

3'-8 1/2" MIN EM GATE

PATH OF TRAVEL  
DIRECTIONAL TACTILE  
PAVER TO FARE GATES  
NORTH TICKETING AREA

PAID AREA

UNPAID AREA

CANOPY ABOVE

COMM CLO

ELEC CLO

TVM

TVM

MAPCASES

PTEL

FUTURE TVM

FLOOR MOUNTED ROUND ASH  
RECEPTACLE SEE 1/AS-019

TRASH RECEPTACLE SEE:  
5/AS-025

PATH OF TRAVEL  
DIRECTIONAL TACTILE  
PAVER TO CONC CURB-  
CUT RAMP

**M Metro**

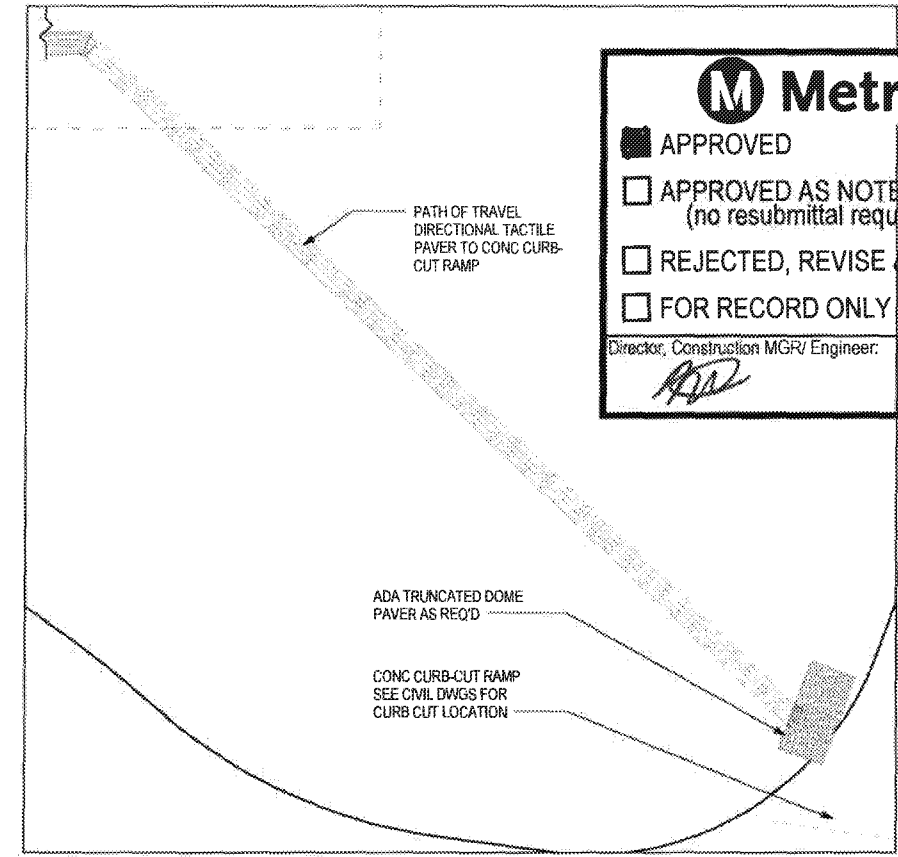
APPROVED

APPROVED AS NOTED  
(no resubmittal required)

REJECTED, REVISE & RESUBMIT

FOR RECORD ONLY

Director, Construction MGR/ Engineer: *ASD* Date: *6/23/16*



**LEGEND**

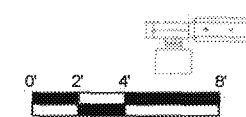
- SEALED CONCRETE
- 1' X 1' TRUNCATED DOME PATTERN ADA TACTILE. REFER TO SHT AS-038 & AS-039 FOR DETAILS
- 1' X 1' DIRECTIONAL BAR PATTERN ADA TACTILE. REFER TO SHT AS-038 & AS-039 FOR DETAILS

**NOTE**

COLOR ARCHITECTURAL TOPPING SLAB PATTERN  
NOT RELEASED FOR CONSTRUCTION, TO BE  
APPROVED BY METRO THROUGH NDC.

**PARTIAL PAVING PLAN**  
1/4" = 1'-0"

1  
A-3153



PACKAGE B-1.4

THE PREPARATION OF THIS DRAWING HAS BEEN FINANCED IN PART THROUGH A GRANT FROM THE U.S. DEPARTMENT OF TRANSPORTATION, FEDERAL TRANSIT ADMINISTRATION (FTA), UNDER THE FEDERAL TRANSIT ACT OF 1964, AS AMENDED, AND IN PART BY THE TAXES OF THE CITIZENS OF LOS ANGELES COUNTY AND OF THE STATE OF CALIFORNIA.

REV	DATE	BY	APP	REG NO	EXPIRES	SEAL HOLDER	DESCRIPTION
1	4/29/16	AH	RP	C34273	11/30/17	N	NDC 086
2	3/11/16	AH	RP	C34273	11/30/17	R. PAPOCCHIA	NDC 081
3	10/21/15	ES	ES	C25553	03/31/17	E. SANCHEZ	NDC 065
0	5/21/15			C25553	03/31/17	E. SANCHEZ	AFC SUBMITTAL

DESIGNED BY  
E. SANCHEZ  
DRAWN BY  
R. RESURRECCION  
CHECKED BY  
S. SOGHOMONIAN  
IN CHARGE  
E. SANCHEZ  
DATE  
5/21/15

A SIGNED & SEALED ORIGINAL OF REV 0 OF THIS DRAWING IS MAINTAINED BY WSCC

**M Metro** LOS ANGELES COUNTY METROPOLITAN TRANSPORTATION AUTHORITY

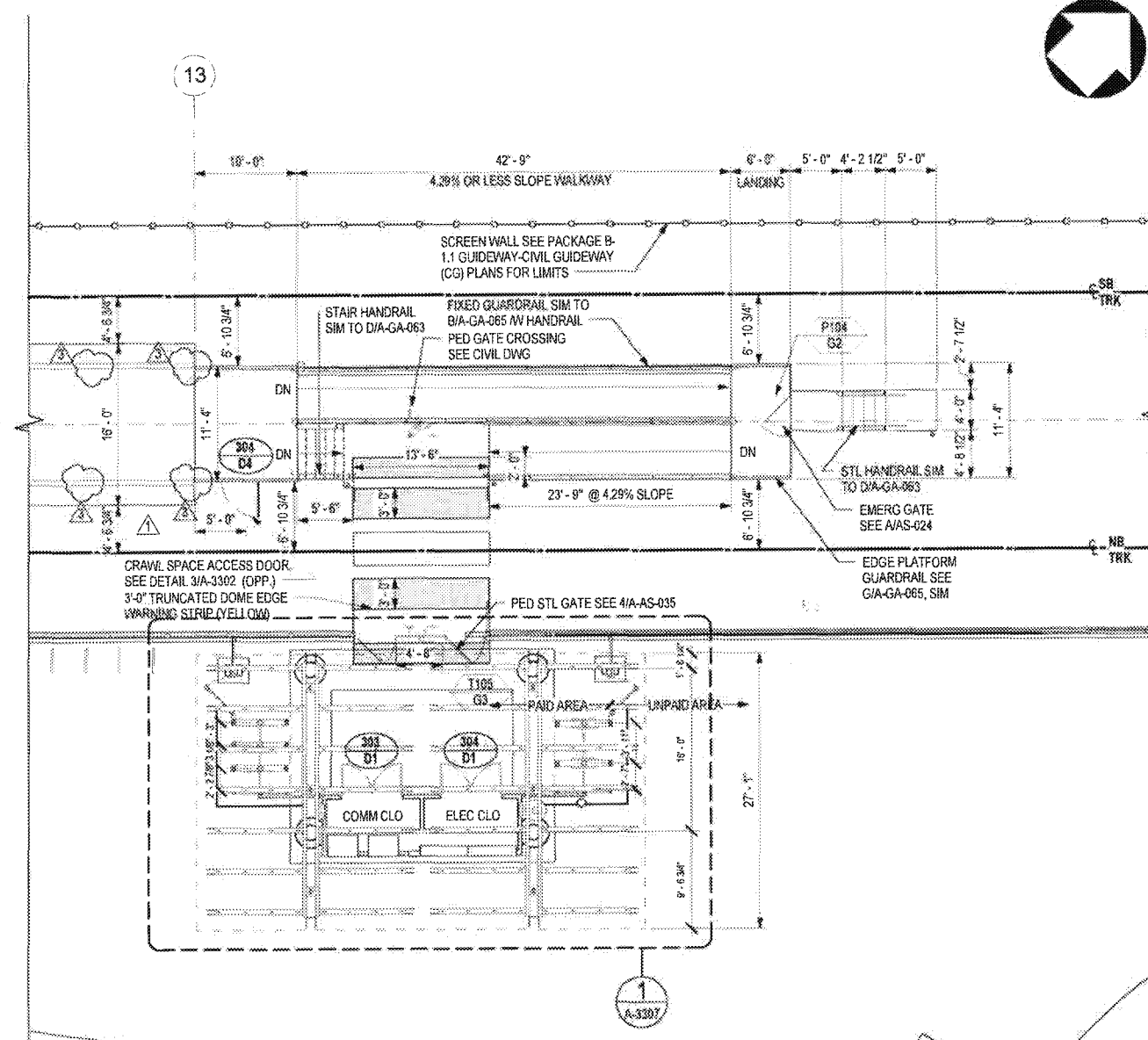
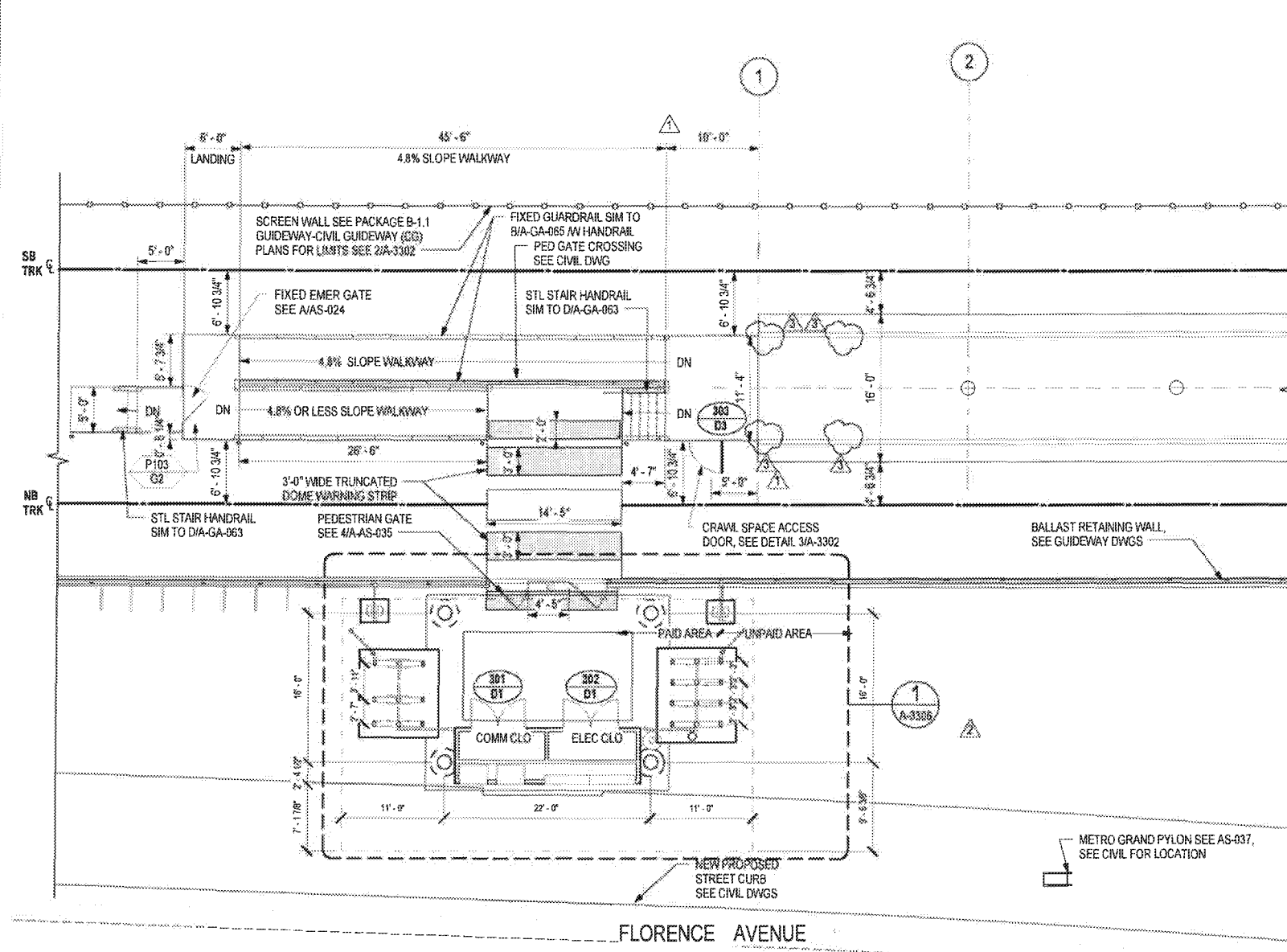
**WALSH-SHEA CORRIDOR CONSTRUCTORS**  
1777 Oakland Blvd.  
Walnut Creek, CA 94596

**HNTB** STEVE WHITAKER APPROVED

**WSP** EFRAIN SANCHEZ SUBMITTED

**CRENSHAW/LAX TRANSIT CORRIDOR PROJECT**  
FLORENCE / LA BREA STATION  
PARTIAL PAVING PLAN 3 OF 3

CONTRACT NO	C09888
DRAWING NO	A-3153
SCALE	1/4" = 1'-0"
SHEET NO	3



ENLARGED FAIR GATES  
TICKETING AREA &  
ENTRANCE  
1/8" = 1'-0"

2  
A-3201

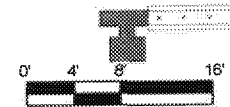
ENLARGED FAIR GATES  
TICKETING AREA AND  
ENTRANCE  
1/8" = 1'-0"

1  
A-3201

**M Metro**

APPROVED  
 APPROVED AS NOTED (no resubmittal required)  
 REJECTED, REVISE & RESUBMIT  
 FOR RECORD ONLY

Director, Construction MGR/ Engineer: *[Signature]* Date: 4/23/14



PACKAGE B-1.4

THE PREPARATION OF THIS DRAWING HAS BEEN FINANCED IN PART THROUGH A GRANT FROM THE U.S. DEPARTMENT OF TRANSPORTATION, FEDERAL TRANSIT ADMINISTRATION (FTA), UNDER THE FEDERAL TRANSIT ACT OF 1964, AS AMENDED, AND IN PART BY THE TAXES OF THE CITIZENS OF LOS ANGELES COUNTY AND OF THE STATE OF CALIFORNIA

REV	DATE	BY	APP	REG NO	EXPIRES	SKAL, HOK/BER	DESCRIPTION
1	4/28/16	AH	RP	C34273	11/30/17		NDC 086
2	2/22/16	AH	RP	C34273	11/30/17	R. PAPOCCHIA	NDC 081
3	10/21/15	ES	ES	C25553	03/31/17	E. SANCHEZ	NDC 065
0	5/21/15			C25553	03/31/17	E. SANCHEZ	AFC SUBMITTAL

DEMANDER BY	DRAWN BY	CHECKED BY	IN CHARGE	DATE
E. SANCHEZ	R. RESURRECCION	S. SOGHOMONIAN	E. SANCHEZ	5/21/15

**M Metro** LOS ANGELES COUNTY METROPOLITAN TRANSPORTATION AUTHORITY

WALSH-SHEA CORRIDOR CONSTRUCTORS  
1777 Oakland Blvd.  
Walnut Creek, CA 94596

**HNTB** STEVE WHITAKER APPROVED

**WSP** EFRAN SANCHEZ SUBMITTED

A SIGNED & SEALED ORIGINAL OF REV 0 OF THIS DRAWING IS MAINTAINED BY WSCC

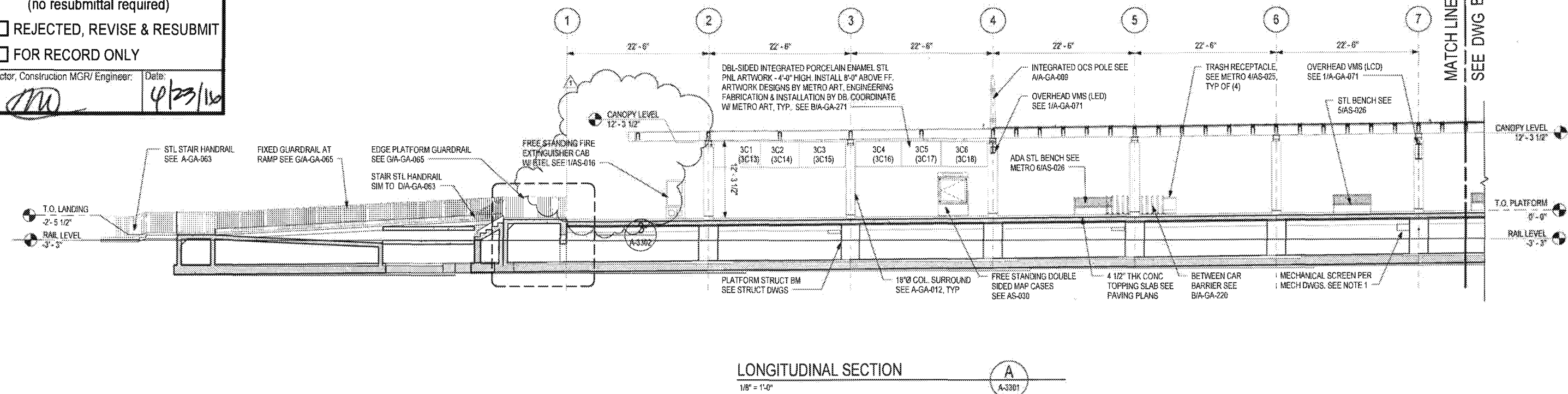
**CRENSHAW/LAX TRANSIT CORRIDOR PROJECT**  
FLORENCE / LA BREA STATION  
ENLARGED PLAN - STAIRS AND SLOPE WALKWAY

CONTRACT NO.	C0988
DRAWING NO.	A-3201
SCALE	1/8" = 1'-0"
SHEET NO.	3



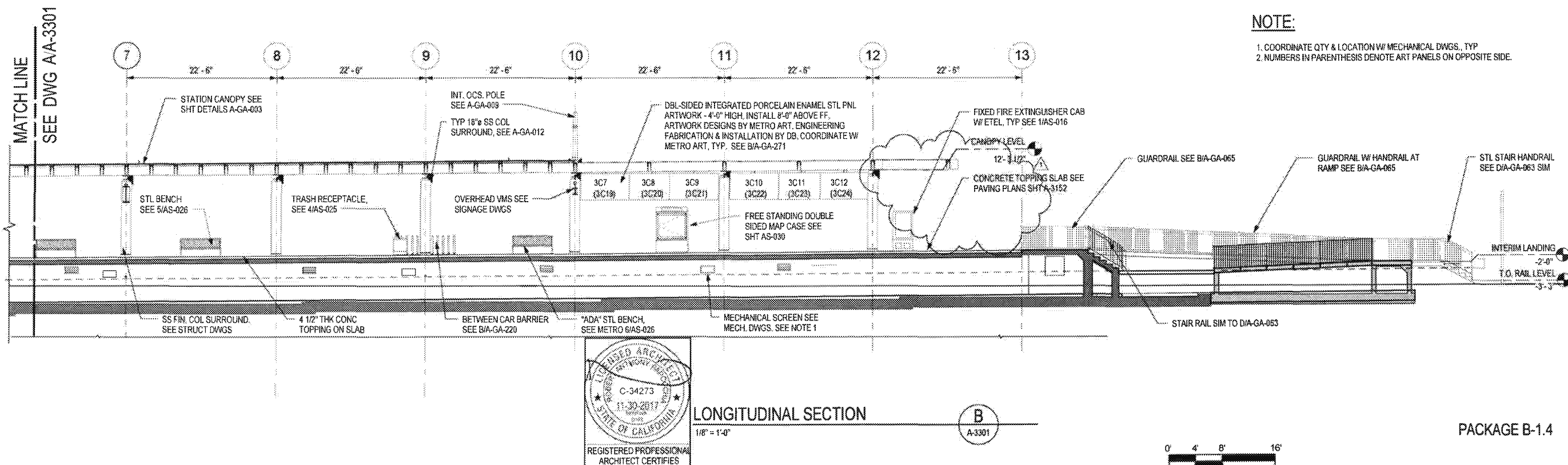
- APPROVED
- APPROVED AS NOTED  
(no resubmittal required)
- REJECTED, REVISE & RESUBMIT
- FOR RECORD ONLY

Director, Construction MGR/ Engineer: \_\_\_\_\_ Date: 4/23/16



LONGITUDINAL SECTION

1/8" = 1'-0"



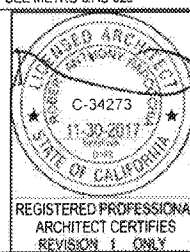
LONGITUDINAL SECTION

1/8" = 1'-0"



NOTE:

1. COORDINATE QTY & LOCATION W/ MECHANICAL DWGS, TYP
2. NUMBERS IN PARENTHESIS DENOTE ART PANELS ON OPPOSITE SIDE.



REGISTERED PROFESSIONAL ARCHITECT CERTIFIES REVISION 1 ONLY

A SIGNED & SEALED ORIGINAL OF REV 0 OF THIS DRAWING IS MAINTAINED BY WSCC

LOS ANGELES COUNTY METROPOLITAN TRANSPORTATION AUTHORITY



WALSH-SHEA CORRIDOR CONSTRUCTORS

1777 Oakland Blvd.  
Walnut Creek, CA 94596



HNTB Corporation  
601 West 9th Street, Suite 1000  
Los Angeles, CA 90071

CRENSHAW/LAX  
TRANSIT CORRIDOR PROJECT  
FLORENCE / LA BREA STATION  
LONGITUDINAL SECTION /  
ELEVATION

PACKAGE B-1.4

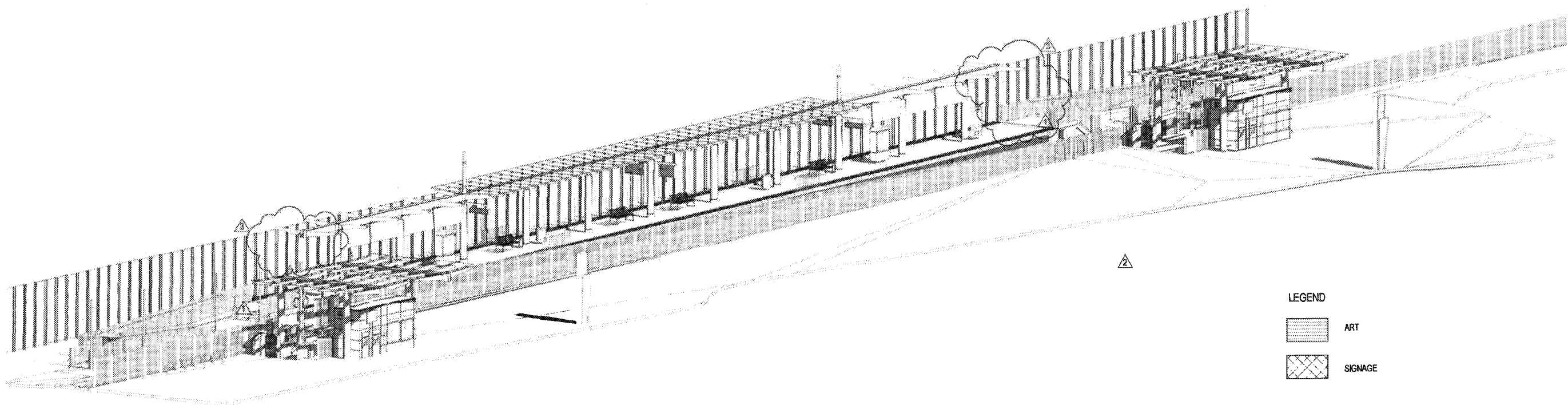


THE PREPARATION OF THIS DRAWING HAS BEEN FINANCED IN PART THROUGH A GRANT FROM THE U.S. DEPARTMENT OF TRANSPORTATION, FEDERAL TRANSIT ADMINISTRATION (FTA), UNDER THE FEDERAL TRANSIT ACT OF 1964, AS AMENDED, AND IN PART BY THE TAXES OF THE CITIZENS OF LOS ANGELES COUNTY AND OF THE STATE OF CALIFORNIA.

REV	DATE	BY	APP	REG NO	EXPIRES	SEAL HOLDER	DESCRIPTION
0	5/21/15			C25553	03/31/17	E. SANCHEZ	AFC SUBMITTAL
	4/28/16	AS	RS	C34273	11/30/17		NDC 086

DESIGNED BY  
E. SANCHEZ  
DRAWN BY  
R. RESURRECCION  
CHECKED BY  
S. SOGHOMONIAN  
IN CHARGE  
E. SANCHEZ  
DATE  
5/21/15

CONTRACT NO C0988	REV 1
DRAWING NO A-3301	
SCALE 1/8" = 1'-0"	
SHEET NO	



LEGEND

	ART
	SIGNAGE

AXONOMETRIC VIEW

1  
A-3801

**M Metro**

APPROVED

APPROVED AS NOTED  
(no resubmittal required)

REJECTED, REVISE & RESUBMIT

FOR RECORD ONLY

Director, Construction MGR/ Engineer: *[Signature]* Date: *4/20/16*

PACKAGE B-1.4

THE PREPARATION OF THIS DRAWING HAS BEEN FINANCED IN PART THROUGH A GRANT FROM THE U.S. DEPARTMENT OF TRANSPORTATION, FEDERAL TRANSIT ADMINISTRATION (FTA), UNDER THE FEDERAL TRANSIT ACT OF 1964, AS AMENDED, AND IN PART BY THE TAXES OF THE CITIZENS OF LOS ANGELES COUNTY AND OF THE STATE OF CALIFORNIA

REV	DATE	BY	APP	REG NO	EXPIRES	SEAL HOLDER	DESCRIPTION
3	4/29/16	AH RP		C34273	11/30/17	<i>[Signature]</i>	NDC 086
2	3/11/16	AH RP		C34273	11/30/17	R. PAPOCCHIA	NDC 081
1	10/21/15	ES ES		C25553	03/31/17	E. SANCHEZ	NDC 065
0	5/21/15			C25553	03/31/17	E. SANCHEZ	AFC SUBMITTAL

DESIGNED BY  
E. SANCHEZ

DRAWN BY  
R. RESURRECCION

CHECKED BY  
S. SOGHOMONIAN

IN CHARGE  
E. SANCHEZ

DATE  
5/21/15

A SIGNED & SEALED ORIGINAL OF REV 0 OF THIS DRAWING IS MAINTAINED BY WSCC

**M Metro** LOS ANGELES COUNTY METROPOLITAN TRANSPORTATION AUTHORITY

WALSH-SHEA CORRIDOR CONSTRUCTORS

1777 Oakland Blvd.  
Walnut Creek, CA 94596

**HNTB** STEVE WHITAKER

**WRM** EFRAIN SANCHEZ

**CRENSHAW/LAX TRANSIT CORRIDOR PROJECT**

**FLORENCE / LA BREA STATION**

**AXONOMETRIC VIEW - PLATFORM LEVEL**

CONTRACT NO	C0988
DRAWING NO	A-3801
SCALE	NO SCALE
SHEET NO	3

06-May-16 4:11:37 PM