

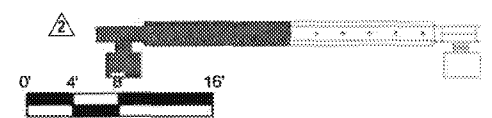
PARTIAL PLATFORM PLAN
1/8" = 1'-0"

M Metro

- APPROVED
- APPROVED AS NOTED (no resubmittal required)
- REJECTED, REVISE & RESUBMIT
- FOR RECORD ONLY

Director, Construction MGR/ Engineer: *[Signature]* Date: *6/23/16*

301 D1 DOORTAG SEE SHEET A-3501



PACKAGE B-1.4

THE PREPARATION OF THIS DRAWING HAS BEEN FINANCED IN PART THROUGH A GRANT FROM THE U.S. DEPARTMENT OF TRANSPORTATION, FEDERAL TRANSIT ADMINISTRATION (FTA), UNDER THE FEDERAL TRANSIT ACT OF 1964, AS AMENDED, AND IN PART BY THE TAKES OF THE CITIZENS OF LOS ANGELES COUNTY AND OF THE STATE OF CALIFORNIA

REV	DATE	BY	APP	REG NO	EXPIRES	SEAL HOLDER	DESCRIPTION
1	4/29/16	AH	RP	C34273	11/30/17	R. PAPOCCHIA	NDC 086
2	3/11/16	AH	RP	C34273	11/30/17	R. PAPOCCHIA	NDC 081
3	10/21/15	ES	ES	C25553	03/31/17	E. SANCHEZ	NDC 085
0	5/21/15			C25553	03/31/17	E. SANCHEZ	AFC SUBMITTAL

DESIGNED BY: E. SANCHEZ
 DRAWN BY: R. RESURRECCION
 CHECKED BY: S. SOGHMONIAN
 IN CHARGE: E. SANCHEZ
 DATE: 5/21/15

A SIGNED & SEALED ORIGINAL OF REV 0 OF THIS DRAWING IS MAINTAINED BY WSCC

M Metro LOS ANGELES COUNTY METROPOLITAN TRANSPORTATION AUTHORITY

WALSH-SHEA CORRIDOR CONSTRUCTORS
 1777 Oakland Blvd.
 Walnut Creek, CA 94596

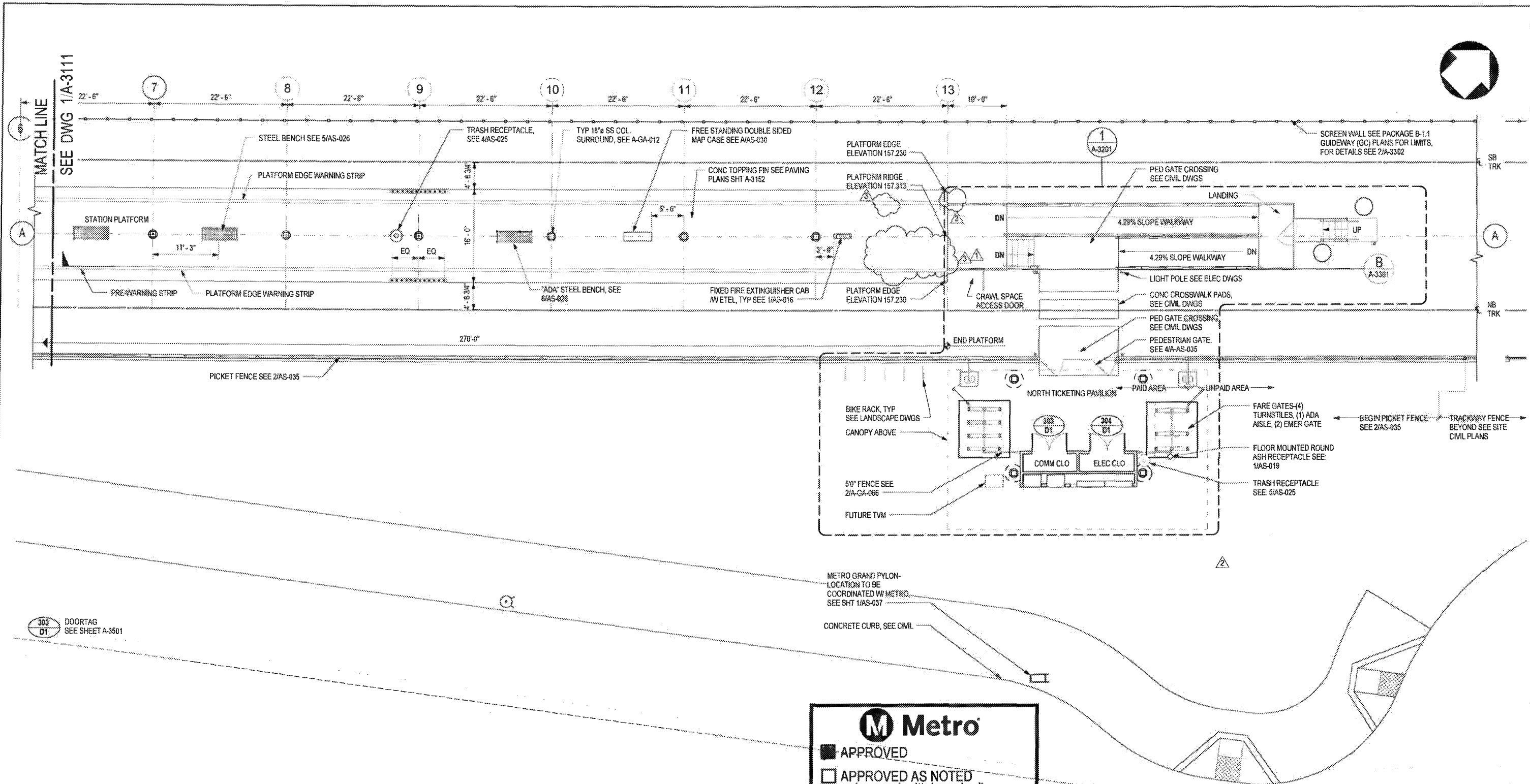
HNTB
 STEVE WHITAKER
 APPROVED

EFRAIN SANCHEZ
 SUBMITTED

CRENSHAW/LAX TRANSIT CORRIDOR PROJECT
FLORENCE / LA BREA STATION
PLATFORM LEVEL PLAN

CONTRACT NO: C0988

DRAWING NO: A-3111	REV: 3
SCALE: 1/8" = 1'-0"	SHEET NO:



M Metro

- APPROVED
- APPROVED AS NOTED (no resubmittal required)
- REJECTED, REVISE & RESUBMIT
- FOR RECORD ONLY

Director, Construction MGR/ Engineer: *[Signature]* Date: *10/23/16*

PARTIAL PLATFORM PLAN
1/8" = 1'-0"

PACKAGE B-1.4

REV	DATE	BY	APP	REG NO	EXPIRES	SEAL HOLDER	DESCRIPTION
0	5/21/15			C25553	03/31/17	E. SANCHEZ	AFC SUBMITTAL
1	10/21/15	ES	ES	C25553	03/31/17	E. SANCHEZ	
2	3/11/16	AH	RP	C34273	11/30/17	R. PAPOCCHIA	
3	4/29/16	AH	RP	C34273	11/30/17	R. PAPOCCHIA	

M Metro LOS ANGELES COUNTY METROPOLITAN TRANSPORTATION AUTHORITY

WALSH-SHEA CORRIDOR CONSTRUCTORS
1777 Oakland Blvd.
Walnut Creek, CA 94596

HNTB
STEVE WHITAKER
APPROVED

EFRAIN SANCHEZ
SUBMITTED

A SIGNED & SEALED ORIGINAL OF REV 0 OF THIS DRAWING IS MAINTAINED BY WSCC

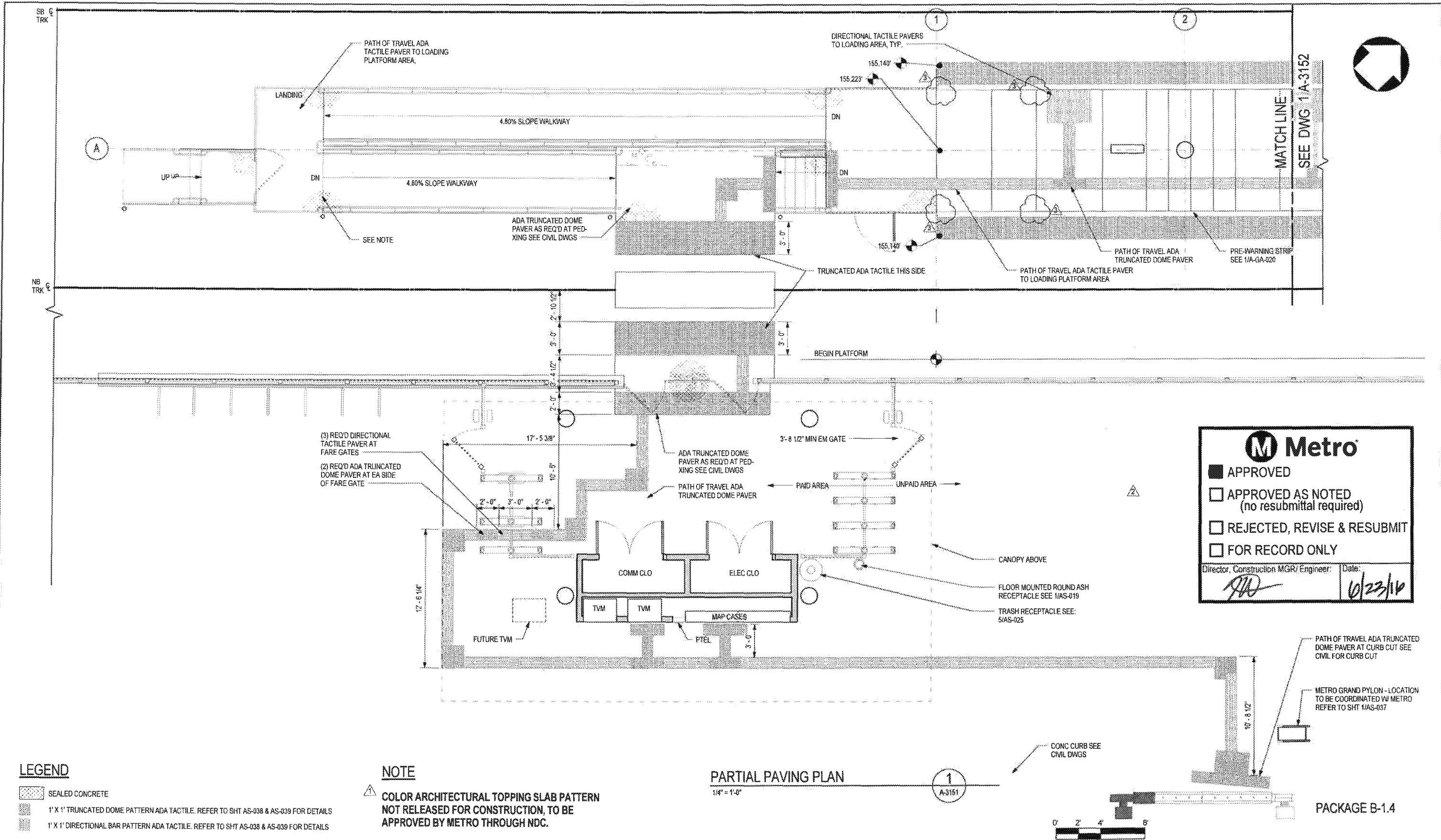
CRENSHAW/LAX TRANSIT CORRIDOR PROJECT FLORENCE / LA BREA STATION PLATFORM LEVEL PLAN

CONTRACT NO: **C0988**

DRAWING NO: **A-3112**

SCALE: **1/8" = 1'-0"**

SHEET NO: **3**



M Metro

APPROVED

APPROVED AS NOTED (no resubmittal required)

REJECTED, REVISE & RESUBMIT

FOR RECORD ONLY

Director, Construction MGR/Engineer: *[Signature]* Date: 6/23/16

- LEGEND**
- SEALED CONCRETE
 - 1' X 1' TRUNCATED DOME PATTERN ADA TACTILE. REFER TO SHT AS-038 & AS-039 FOR DETAILS
 - 1' X 1' DIRECTIONAL BAR PATTERN ADA TACTILE. REFER TO SHT AS-038 & AS-039 FOR DETAILS

NOTE

COLOR ARCHITECTURAL TOPPING SLAB PATTERN NOT RELEASED FOR CONSTRUCTION, TO BE APPROVED BY METRO THROUGH NDC.

PARTIAL PAVING PLAN
1/4" = 1'-0"

REV	DATE	BY	APP	REG NO	EXPIRES	REAL HOLDER	DESCRIPTION
1	4/29/16	AH	RP	C34273	11/30/17	R. PAPOCCHIA	NDC 086
2	3/11/16	AH	RP	C34273	11/30/17	R. PAPOCCHIA	NDC 081
3	10/21/15	ES	ES	C25553	03/31/17	E. SANCHEZ	NDC 065
0	9/21/15			C25553	03/31/17	E. SANCHEZ	AFC SUBMITTAL

A SIGNED & SEALED ORIGINAL OF REV 0 OF THIS DRAWING IS MAINTAINED BY WSCC

M Metro
LOS ANGELES COUNTY METROPOLITAN TRANSPORTATION AUTHORITY

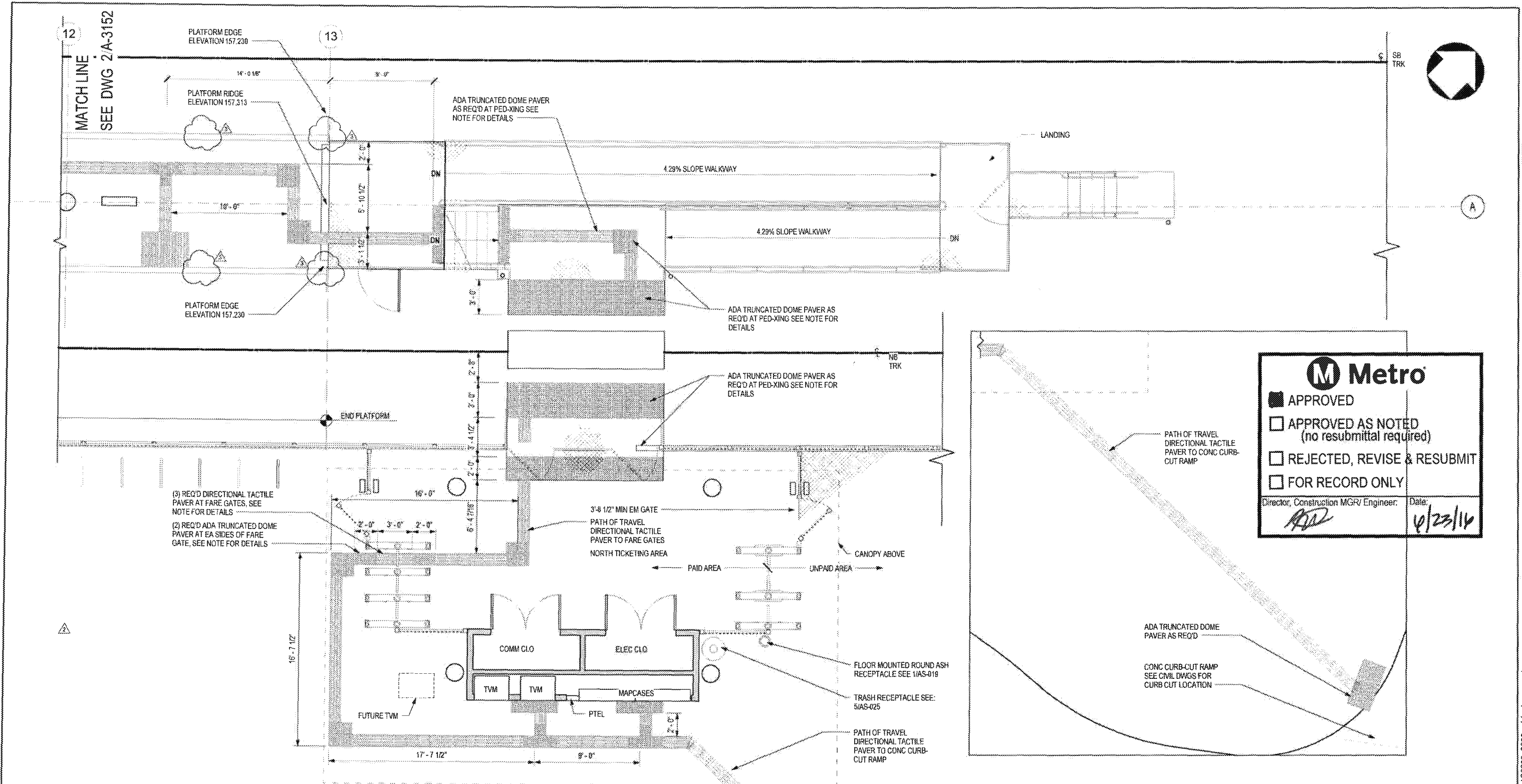
WALSH-SHEA CORRIDOR CONSTRUCTORS
1777 Oakland Blvd.
Walnut Creek, CA 94596

HNTB
STEVE WHITAKER
APPROVED

MTM
EFRAIN SANCHEZ
SUBMITTED

CRENSHAW/LAX
TRANSIT CORRIDOR PROJECT
FLORENCE / LA BREA STATION
PARTIAL PAVING PLAN 1 OF 3

CONTRACT NO.	C0988
DRAWING NO.	A-3151
SCALE	1/4" = 1'-0"
SHEET NO.	3



M Metro

APPROVED

APPROVED AS NOTED (no resubmittal required)

REJECTED, REVISE & RESUBMIT

FOR RECORD ONLY

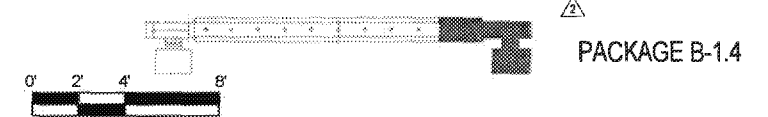
Director, Construction MGR/ Engineer: *ASD* Date: *6/23/16*

- LEGEND**
- SEALED CONCRETE
 - 1' X 1' TRUNCATED DOME PATTERN ADA TACTILE. REFER TO SHT AS-038 & AS-039 FOR DETAILS
 - 1' X 1' DIRECTIONAL BAR PATTERN ADA TACTILE. REFER TO SHT AS-038 & AS-039 FOR DETAILS

NOTE

COLOR ARCHITECTURAL TOPPING SLAB PATTERN NOT RELEASED FOR CONSTRUCTION, TO BE APPROVED BY METRO THROUGH NDC.

PARTIAL PAVING PLAN
1/4" = 1'-0"



REV	DATE	BY	APP	REG NO	EXPIRES	SEAL HOLDER	DESCRIPTION
1	4/29/16	AH	RP	C34273	11/30/17	N	NDC 086
2	3/11/16	AH	RP	C34273	11/30/17	R. PAPOCCHIA	NDC 081
3	10/21/15	ES	ES	C25553	03/31/17	E. SANCHEZ	NDC 065
0	5/21/15			C25553	03/31/17	E. SANCHEZ	AFC SUBMITTAL

DESIGNED BY E. SANCHEZ
DRAWN BY R. RESURRECCION
CHECKED BY S. SOGHOMONIAN
IN CHARGE E. SANCHEZ
DATE 5/21/15

A SIGNED & SEALED ORIGINAL OF REV 0 OF THIS DRAWING IS MAINTAINED BY WSCC

Metro LOS ANGELES COUNTY METROPOLITAN TRANSPORTATION AUTHORITY

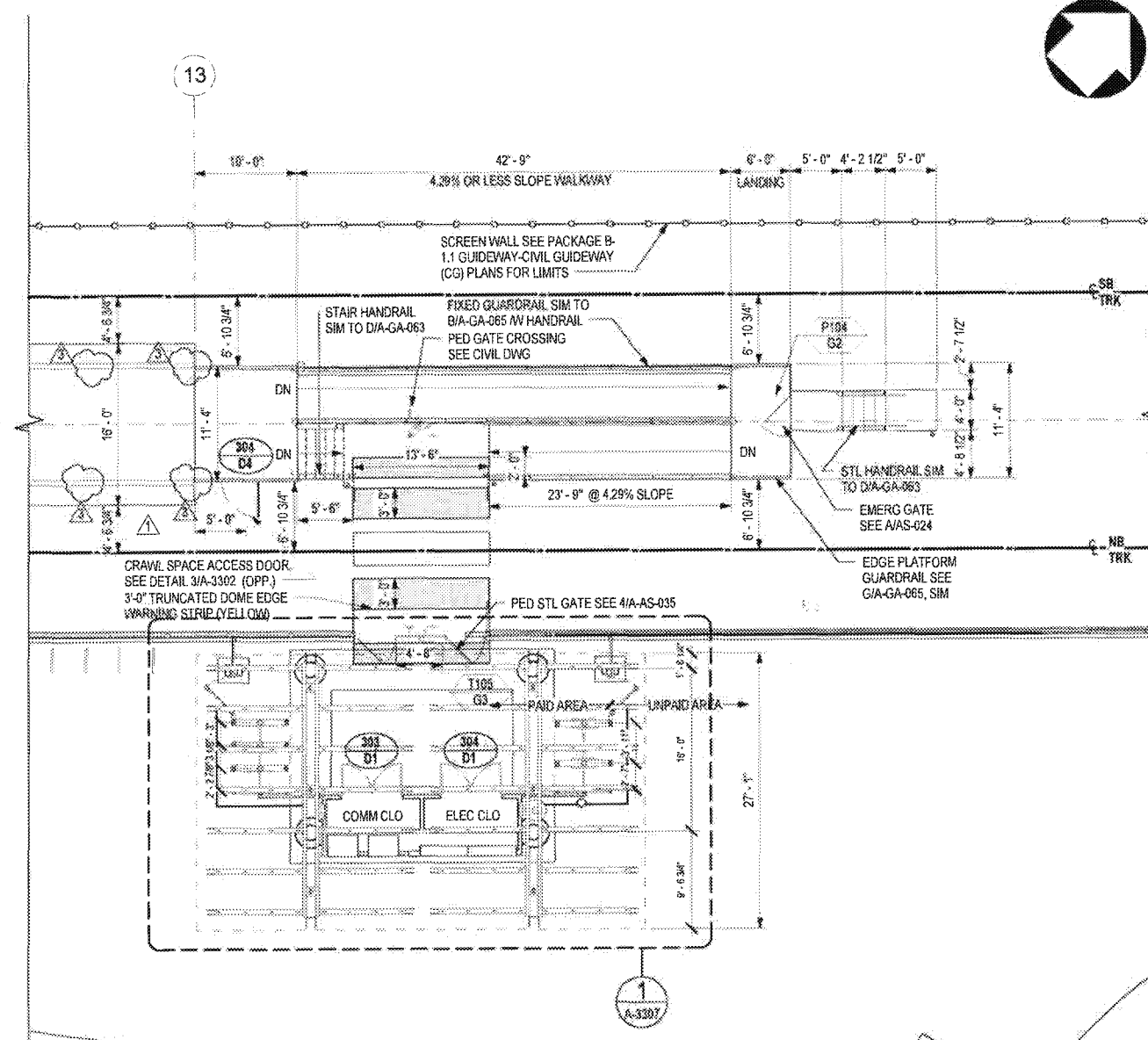
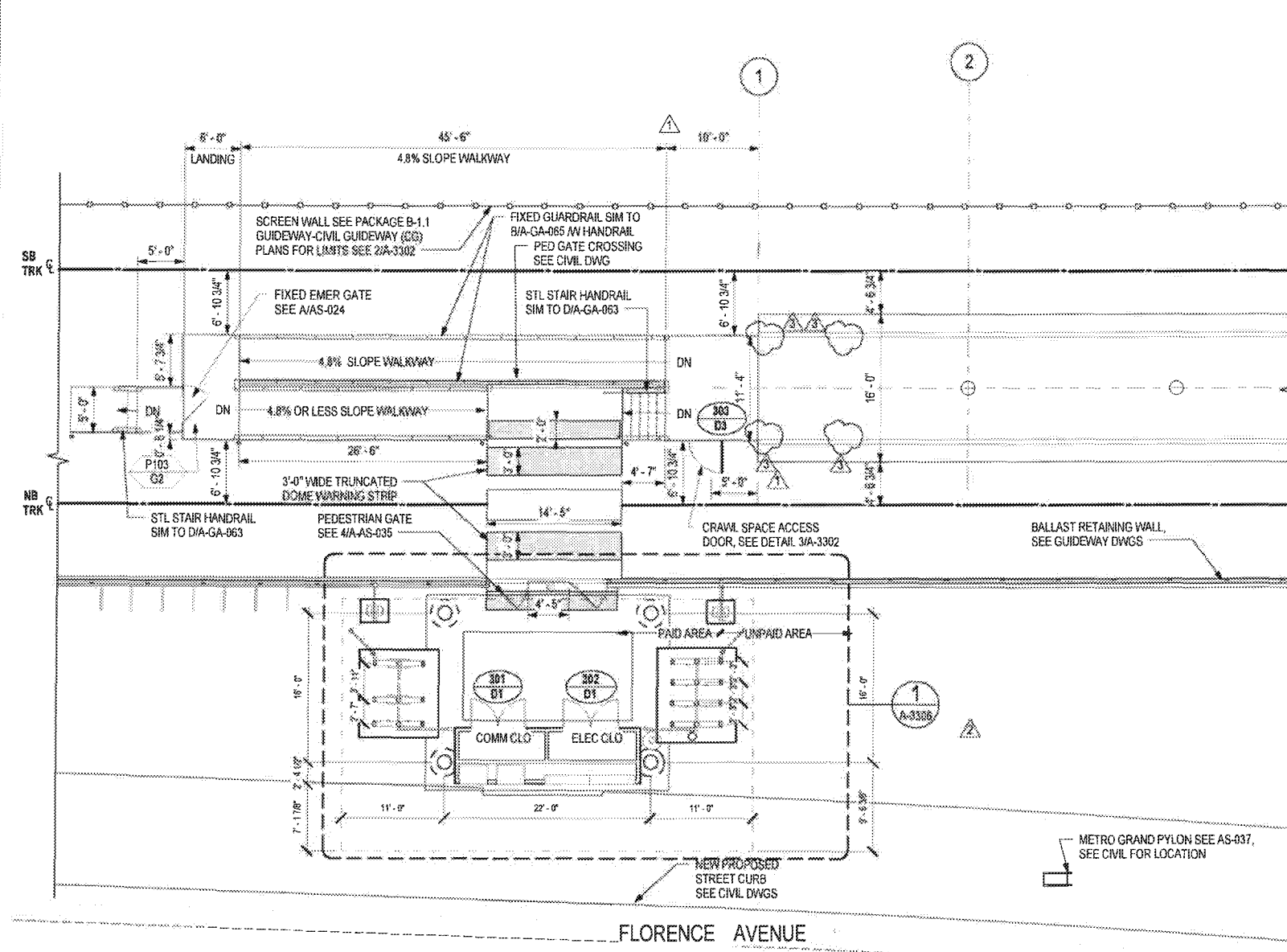
1777 Oakland Blvd.
Walnut Creek, CA 94596

HNTB STEVE WHITAKER APPROVED

WALSH-SHEA CORRIDOR CONSTRUCTORS EFRAIN SANCHEZ SUBMITTED

CRENSHAW/LAX TRANSIT CORRIDOR PROJECT FLORENCE / LA BREA STATION PARTIAL PAVING PLAN 3 OF 3

CONTRACT NO C09888	REV 3
DRAWING NO A-3153	SCALE 1/4" = 1'-0"
SHEET NO	



ENLARGED FAIR GATES
TICKETING AREA &
ENTRANCE
1/8" = 1'-0"

2
A-3291

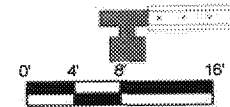
ENLARGED FAIR GATES
TICKETING AREA AND
ENTRANCE
1/8" = 1'-0"

1
A-3291

M Metro

APPROVED
 APPROVED AS NOTED
(no resubmittal required)
 REJECTED, REVISE & RESUBMIT
 FOR RECORD ONLY

Director, Construction MGR/ Engineer: *[Signature]* Date: 4/23/14



PACKAGE B-1.4

THE PREPARATION OF THIS DRAWING HAS BEEN FINANCED IN PART THROUGH A GRANT FROM THE U.S. DEPARTMENT OF TRANSPORTATION, FEDERAL TRANSIT ADMINISTRATION (FTA), UNDER THE FEDERAL TRANSIT ACT OF 1964, AS AMENDED, AND IN PART BY THE TAXES OF THE CITIZENS OF LOS ANGELES COUNTY AND OF THE STATE OF CALIFORNIA

REV	DATE	BY	APP	REG NO	EXPIRES	SKAL	NO/REV	DESCRIPTION
1	4/28/16	AH	RP	C34273	11/30/17			NDC 086
2	2/22/16	AH	RP	C34273	11/30/17	R. PAPOCCHIA		NDC 081
3	10/21/15	ES	ES	C25553	03/31/17	E. SANCHEZ		NDC 065
0	5/21/15			C25553	03/31/17	E. SANCHEZ		AFC SUBMITTAL

DEMANDER BY	DRAWN BY	CHECKED BY	IN CHARGE	DATE
E. SANCHEZ	R. RESURRECCION	S. SOGHOMONIAN	E. SANCHEZ	5/21/15

A SIGNED & SEALED ORIGINAL OF REV 0 OF THIS DRAWING IS MAINTAINED BY WSCC

M Metro LOS ANGELES COUNTY METROPOLITAN TRANSPORTATION AUTHORITY

WALSH-SHEA CORRIDOR CONSTRUCTORS
1777 Oakland Blvd.
Walnut Creek, CA 94596

HNTB STEVE WHITAKER APPROVED

WSP EFRAN SANCHEZ SUBMITTED

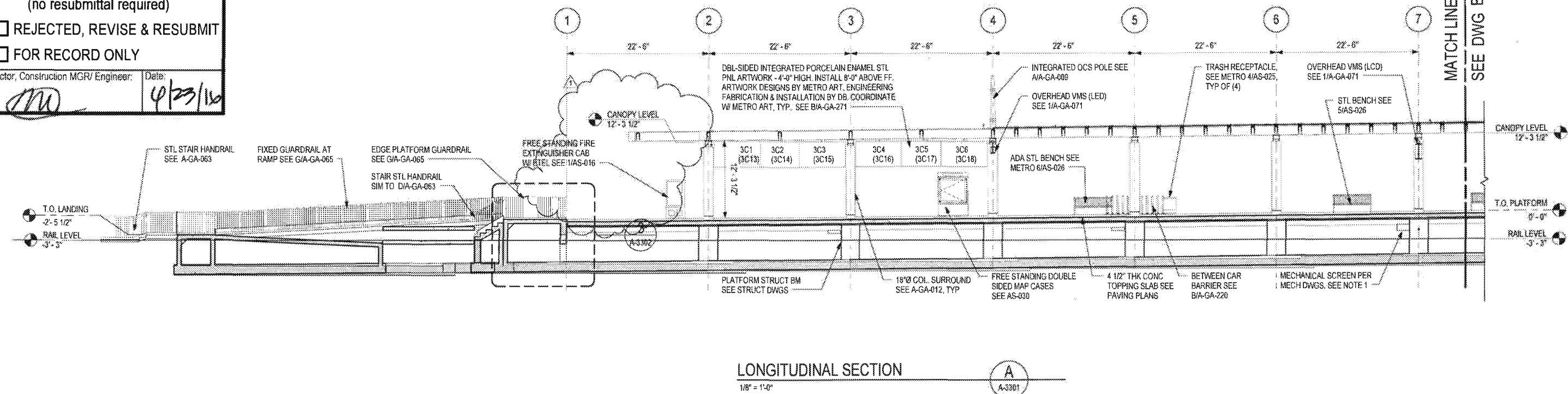
CRENSHAW/LAX
TRANSIT CORRIDOR PROJECT
FLORENCE / LA BREA STATION
ENLARGED PLAN - STAIRS AND
SLOPE WALKWAY

CONTRACT NO.	C0988
DRAWING NO.	A-3201
SCALE	1/8" = 1'-0"
SHEET NO.	3



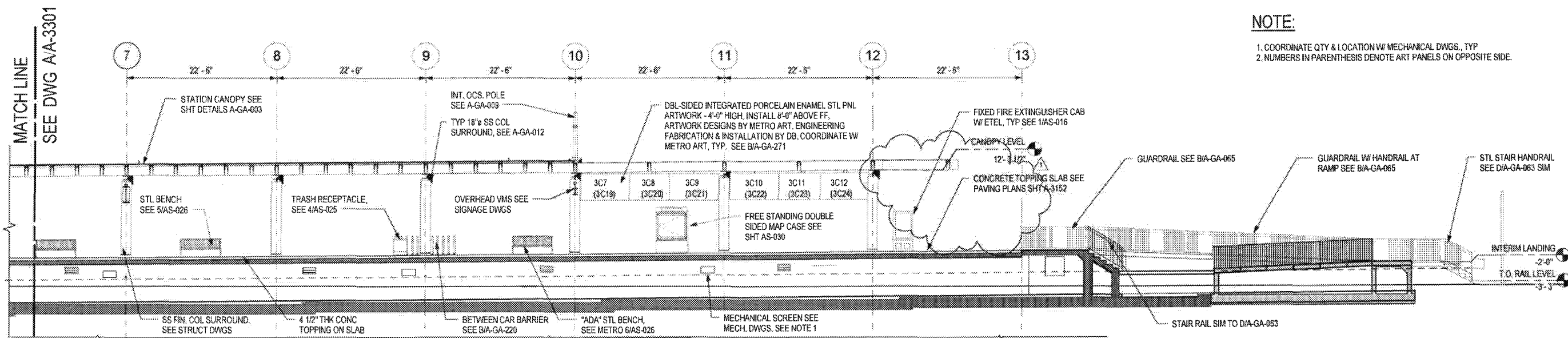
- APPROVED
- APPROVED AS NOTED
(no resubmittal required)
- REJECTED, REVISE & RESUBMIT
- FOR RECORD ONLY

Director, Construction MGR/ Engineer: _____ Date: 4/23/16



LONGITUDINAL SECTION

1/8" = 1'-0"



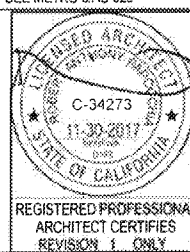
LONGITUDINAL SECTION

1/8" = 1'-0"



NOTE:

1. COORDINATE QTY & LOCATION W/ MECHANICAL DWGS, TYP
2. NUMBERS IN PARENTHESIS DENOTE ART PANELS ON OPPOSITE SIDE.



REGISTERED PROFESSIONAL ARCHITECT CERTIFIES REVISION 1 ONLY

A SIGNED & SEALED ORIGINAL OF REV 0 OF THIS DRAWING IS MAINTAINED BY WSCC

LOS ANGELES COUNTY METROPOLITAN TRANSPORTATION AUTHORITY



WALSH-SHEA CORRIDOR CONSTRUCTORS

1777 Oakland Blvd.
Walnut Creek, CA 94596



HNTB Corporation
601 West 9th Street, Suite 1000
Los Angeles, CA 90071

CRENSHAW/LAX
TRANSIT CORRIDOR PROJECT
FLORENCE / LA BREA STATION
LONGITUDINAL SECTION /
ELEVATION

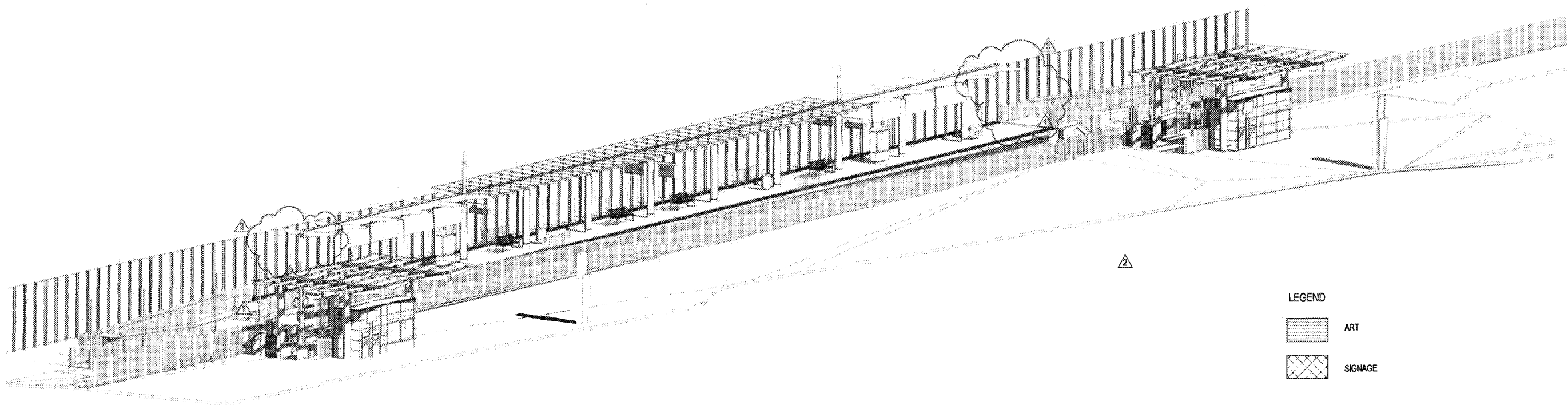
PACKAGE B-1.4

THE PREPARATION OF THIS DRAWING HAS BEEN FINANCED IN PART THROUGH A GRANT FROM THE U.S. DEPARTMENT OF TRANSPORTATION, FEDERAL TRANSIT ADMINISTRATION (FTA), UNDER THE FEDERAL TRANSIT ACT OF 1964, AS AMENDED, AND IN PART BY THE TAXES OF THE CITIZENS OF LOS ANGELES COUNTY AND OF THE STATE OF CALIFORNIA.

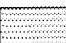
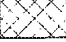
REV	DATE	BY	APP	REG NO	EXPIRES	SEAL HOLDER	DESCRIPTION
0	5/21/15	AS	RS	C25553	03/31/17	E. SANCHEZ	AFC SUBMITTAL
	4/28/16	AS	RS	C34273	11/30/17	E. SANCHEZ	NDC 086

DESIGNED BY
E. SANCHEZ
DRAWN BY
R. RESURRECCION
CHECKED BY
S. SOGHOMONIAN
IN CHARGE
E. SANCHEZ
DATE
5/21/15

CONTRACT NO	C0988
DRAWING NO	A-3301
SCALE	1/8" = 1'-0"
SHEET NO	1



LEGEND

	ART
	SIGNAGE

AXONOMETRIC VIEW

1
A-3801



M Metro

APPROVED

APPROVED AS NOTED
(no resubmittal required)


REJECTED, REVISE & RESUBMIT

FOR RECORD ONLY

Director, Construction MGR/ Engineer:  Date: 

PACKAGE B-1.4

THE PREPARATION OF THIS DRAWING HAS BEEN FINANCED IN PART THROUGH A GRANT FROM THE U.S. DEPARTMENT OF TRANSPORTATION, FEDERAL TRANSIT ADMINISTRATION (FTA), UNDER THE FEDERAL TRANSIT ACT OF 1964, AS AMENDED, AND IN PART BY THE TAXES OF THE CITIZENS OF LOS ANGELES COUNTY AND OF THE STATE OF CALIFORNIA

REV	DATE	BY	APP	REG NO	EXPIRES	SEAL HOLDER	DESCRIPTION
3	4/29/16	AH RP		C34273	11/30/17		NDC 086
2	3/11/16	AH RP		C34273	11/30/17	R. PAPOCCHIA	NDC 081
1	10/21/15	ES ES		C25553	03/31/17	E. SANCHEZ	NDC 065
0	5/21/15			C25553	03/31/17	E. SANCHEZ	AFC SUBMITTAL

DESIGNED BY
E. SANCHEZ

DRAWN BY
R. RESURRECCION

CHECKED BY
S. SOGHOMONIAN

IN CHARGE
E. SANCHEZ

DATE
5/21/15

A SIGNED & SEALED ORIGINAL OF REV 0 OF THIS DRAWING IS MAINTAINED BY WSCC

M Metro LOS ANGELES COUNTY METROPOLITAN TRANSPORTATION AUTHORITY

WALSH-SHEA CORRIDOR CONSTRUCTORS

1777 Oakland Blvd.
Walnut Creek, CA 94596

HNTB STEVE WHITAKER

WRM EFRAIN SANCHEZ

CRENSHAW/LAX TRANSIT CORRIDOR PROJECT FLORENCE / LA BREA STATION AXONOMETRIC VIEW - PLATFORM LEVEL

CONTRACT NO	C0988
DRAWING NO	A-3801
SCALE	NO SCALE
SHEET NO	3

06-May-16 4:11:37 PM