



DEVELOPER

MURPHY'S BOWL LLC
19400 I/E 4th St, Suite 3000
Bellevue, WA 98004

DEVELOPER'S MANAGING AGENT

WILSON MEANY
6701 Center Drive, Suite 550
Los Angeles, CA 90045
310.333.8000 ext
http://wilsonmeany.com/

ARCHITECT / PLANNING / ENGINEERING / TRANSPORTATION

AECOM
AECOM TECHNICAL SERVICES, INC.
2360 McGee, Suite 200
Kansas City, MO 64108
816.561.4443 tel 816.991.2693 fax
www.aecom.com

CIVIL ENGINEER

D&D ENGINEERING, INC.
8901 S. La Compa Blvd, Suite 106
Inglewood, CA 90331
424.951.6800 tel

DRY UTILITY SYSTEMS

BJ PALMER & ASSOCIATES, INC
23245 Grover Avenue
Valencia, CA 91355
760.842.7910 tel

PARKING

WALKER CONSULTANTS
608 S. Olive St, Suite 1100
Los Angeles, CA 90014
213.453.4811 tel

SHORING ENGINEER

DRS ENGINEERING, INC
3564 Sagunto Street, Suite 408
Santa Ana, CA 92704
916.402.3902 tel

REGISTRATION

This drawing has been prepared for the use of AECOM's client and may not be used, reproduced or relied upon by third parties, except as agreed by AECOM and its client, as required by law or for use by governmental reviewing agencies. AECOM accepts no responsibility, and denies any liability whatsoever, to any party that modifies this drawing without AECOM's express written consent. Do not scale this document. All measurements must be obtained from the stated dimensions.

NOT FOR CONSTRUCTION

ISSUE/REVISION

IR	DATE	DESCRIPTION
SEP 14, 2018	ER DOCUMENTS	

KEY PLAN



PROJECT NUMBER

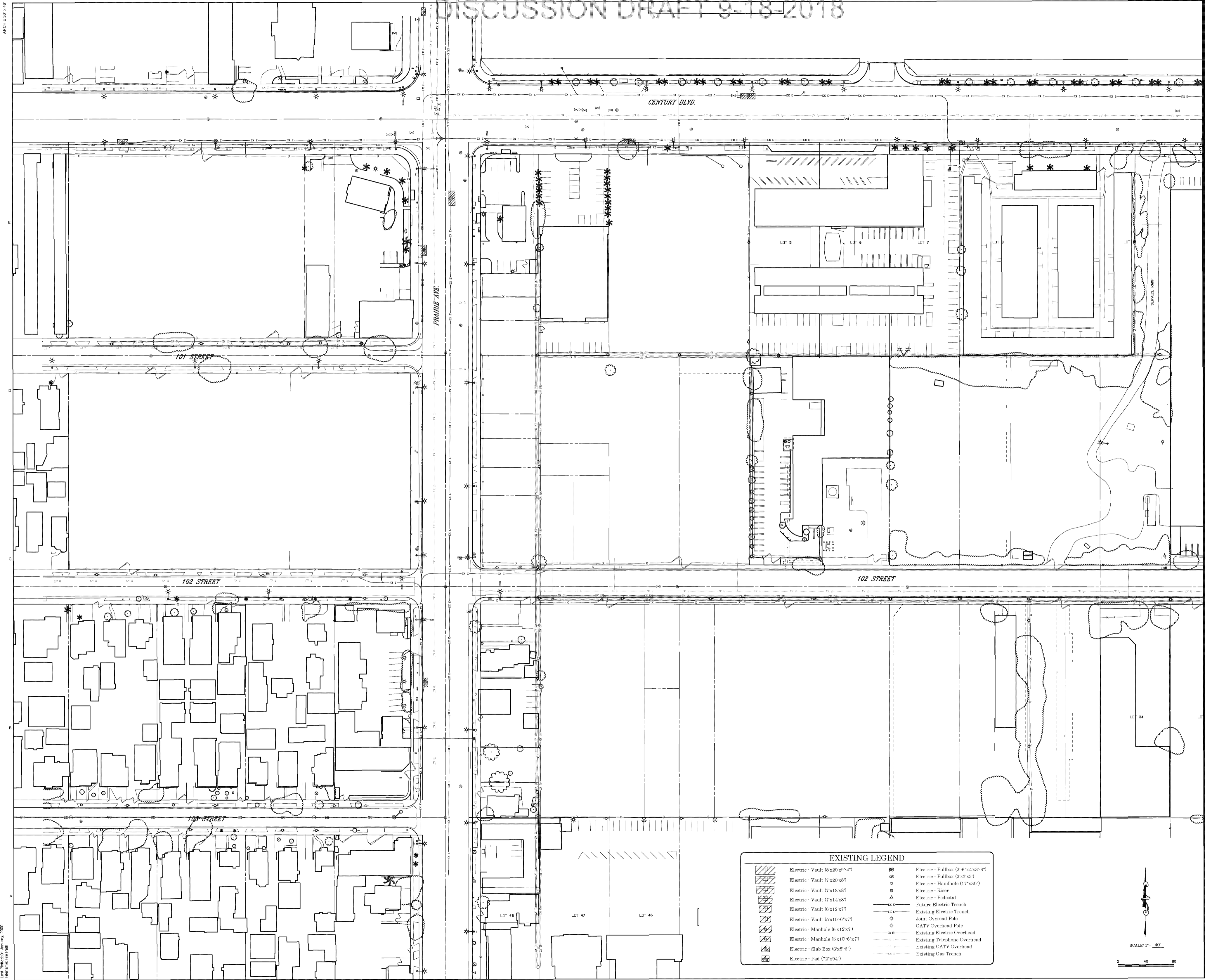
60545923

SHEET TITLE

EXISTING DRY UTILITIES

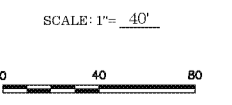
SHEET NUMBER

CD-100A



EXISTING LEGEND

	Electric - Vault (8x20x9'-4")		Electric - Pullbox (2'-6"x4x3'-0")
	Electric - Vault (7x20x8)		Electric - Pullbox (2'x3'x3")
	Electric - Vault (7x18x8)		Electric - Handhole (17"x30")
	Electric - Vault (7x14x8)		Electric - Riser
	Electric - Vault (6'x12x7)		Electric - Pedestal
	Electric - Vault (5'x10'-6"x7)		Future Electric Trench
	Electric - Manhole (6'x12x7)		Existing Electric Trench
	Electric - Manhole (5'x10'-6"x7)		Joint Overhead Pole
	Electric - Slab Box (6'x8'-6")		CATV Overhead Pole
	Electric - Pad (72"x9'4")		Existing Electric Overhead
			Existing Telephone Overhead
			Existing CATV Overhead
			Existing Gas Trench





DEVELOPER

**MURPHY'S BOWL
LLC**
19400 NE 4th St, Suite 3000
Bellevue, WA 98004

DEVELOPER'S MANAGING AGENT

WILSON MEANY
6701 Center Drive, Suite 550
Los Angeles, CA 90045
310.332.8001 tel
http://wilsonmeany.com/

**ARCHITECT / PLANNING /
ENGINEERING / TRANSPORTATION**

AECOM
AECOM TECHNICAL SERVICES, INC.
2350 McGee, Suite 200
Kansas City, MO 64108
816.561.4443 tel 816.991.2693 fax
www.aecom.com

CIVIL ENGINEER

**D&D
ENGINEERING, INC**
8901 S. La Comaga Blvd, Suite 106
Inglewood, CA 90331
424.951.6801 tel

DRY UTILITY SYSTEMS

**BJ PALMER &
ASSOCIATES, INC**
23245 Grover Avenue
Valencia, CA 91355
760.842.7910 tel

PARKING

**WALKER
CONSULTANTS**
608 S. Olive St, Suite 1100
Los Angeles, CA 90014
213.463.8911 tel

SHORING ENGINEER

**DRS
ENGINEERING, INC**
3564 Sagunto Street, Suite 408
Santa Fe, CA 94060
916.452.3992 tel

REGISTRATION

This drawing has been prepared for the use of AECOM's client and may not be used, reproduced or relied upon by third parties, except as agreed by AECOM and its client, as required by law or for use by governmental reviewing agencies. AECOM accepts no responsibility, and denies any liability whatsoever, to any party that modifies this drawing without AECOM's express written consent. Do not scale this document. All measurements must be obtained from the stated dimensions.

**NOT FOR
CONSTRUCTION**

ISSUE/REVISION

NO.	DATE	DESCRIPTION
1	SEP 14, 2016	ERR DOCUMENTS

KEY PLAN

PROJECT NUMBER
60545923

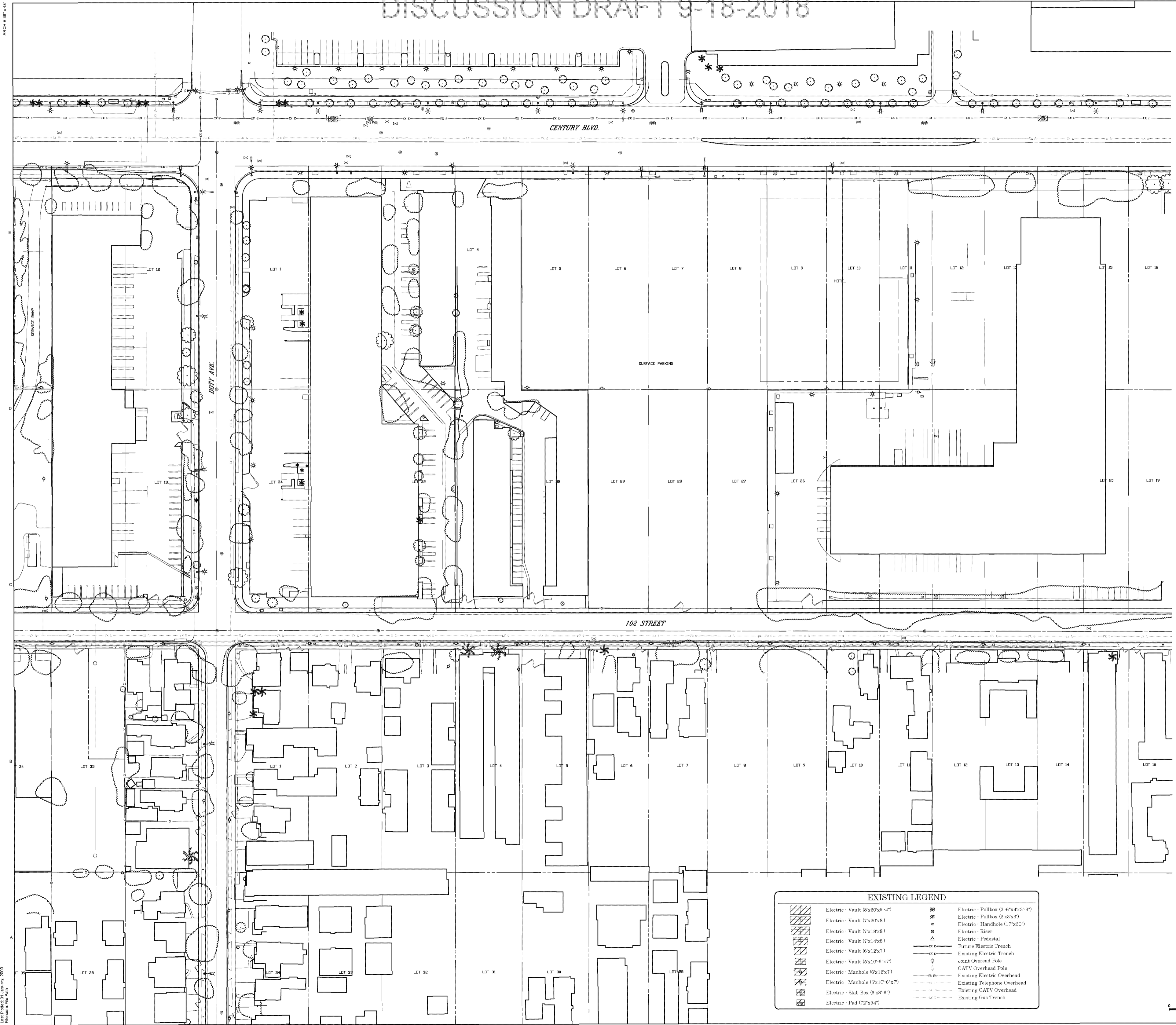
SHEET TITLE

EXISTING DRY UTILITIES

SHEET NUMBER

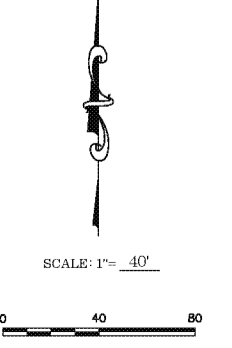
CD-101A

© 2015 AECOM TECHNICAL SERVICES, INC.



EXISTING LEGEND

	Electric - Vault (8x20x9'-4")		Electric - Pullbox (2'-6"x4x3'-6")
	Electric - Vault (7x20x8")		Electric - Pullbox (2'x3'x3')
	Electric - Vault (7x18x8")		Electric - Handhole (17"x30")
	Electric - Vault (7x14x8")		Electric - Busbar
	Electric - Vault (6'x12x7')		Electric - Pedestal
	Electric - Vault (5'x10'-6"x7')		Future Electric Trench
	Electric - Manhole (6'x12x7')		Existing Electric Trench
	Electric - Manhole (5'x10'-6"x7')		Joint Overhead Pole
	Electric - Slab Box (6'x8'-6")		CATV Overhead Pole
	Electric - Pad (72"x9'4")		Existing Electric Overhead
			Existing Telephone Overhead
			Existing CATV Overhead
			Existing Gas Trench



Project Management Initials: Approved: AFR
Designer: DSC Checked: CHK
Date: 9/18/2016 File Path: \\...

DISCUSSION DRAFT 9-18-2018

AECOM

PROJECT
PROJECT CONDOR,
INGLEWOOD CALIFORNIA



DEVELOPER

**MURPHY'S BOWL
LLC**
19400 HE 4TH ST, SUITE 3000
BELLEVUE, WA 98004

DEVELOPER'S MANAGING AGENT

WILSON MEANY
6701 Center Drive, Suite 550
Los Angeles, CA 90045
310.382.8001 tel
http://wilsonmeany.com/

**ARCHITECT / PLANNING /
ENGINEERING / TRANSPORTATION**

AECOM

AECOM TECHNICAL SERVICES, INC.
2350 McGee, Suite 200
Kansas City, MO 64108
816.561.4443 tel 816.991.2653 fax
www.aecom.com

CIVIL ENGINEER

**D&D
ENGINEERING, INC**
8901 S. La Compa Blvd, Suite 106
Inglewood, CA 90331
494.393.4122 tel

DRY UTILITY SYSTEMS

**BJ PALMER &
ASSOCIATES, INC**
23245 Crocker Avenue
Valencia, CA 91355
760.842.7910 tel

PARKING

**WALKER
CONSULTANTS**
608 S. Olive St, Suite 1100
Los Angeles, CA 90014
213.458.4611 tel

SHORING ENGINEER

**DRS
ENGINEERING, INC**
3564 Sagunto Street, Suite 408
Santa Fe, CA 94060
916.452.3962 tel

REGISTRATION

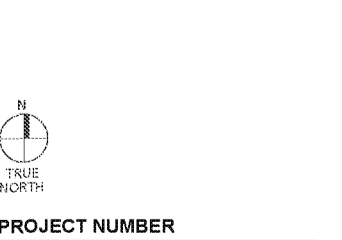
This drawing has been prepared for the use of AECOM's client and may not be used, reproduced or relied upon by third parties, except as agreed by AECOM and its client, as required by law or for use by governmental reviewing agencies. AECOM accepts no responsibility, and denies any liability whatsoever, to any party that modifies this drawing without AECOM's express written consent. Do not scale this document. All measurements must be obtained from the stated dimensions.

**NOT FOR
CONSTRUCTION**

ISSUE/REVISION

NO.	DATE	DESCRIPTION
1	SEP 14, 2018	DIR DOCUMENTS

KEY PLAN



PROJECT NUMBER

60545923

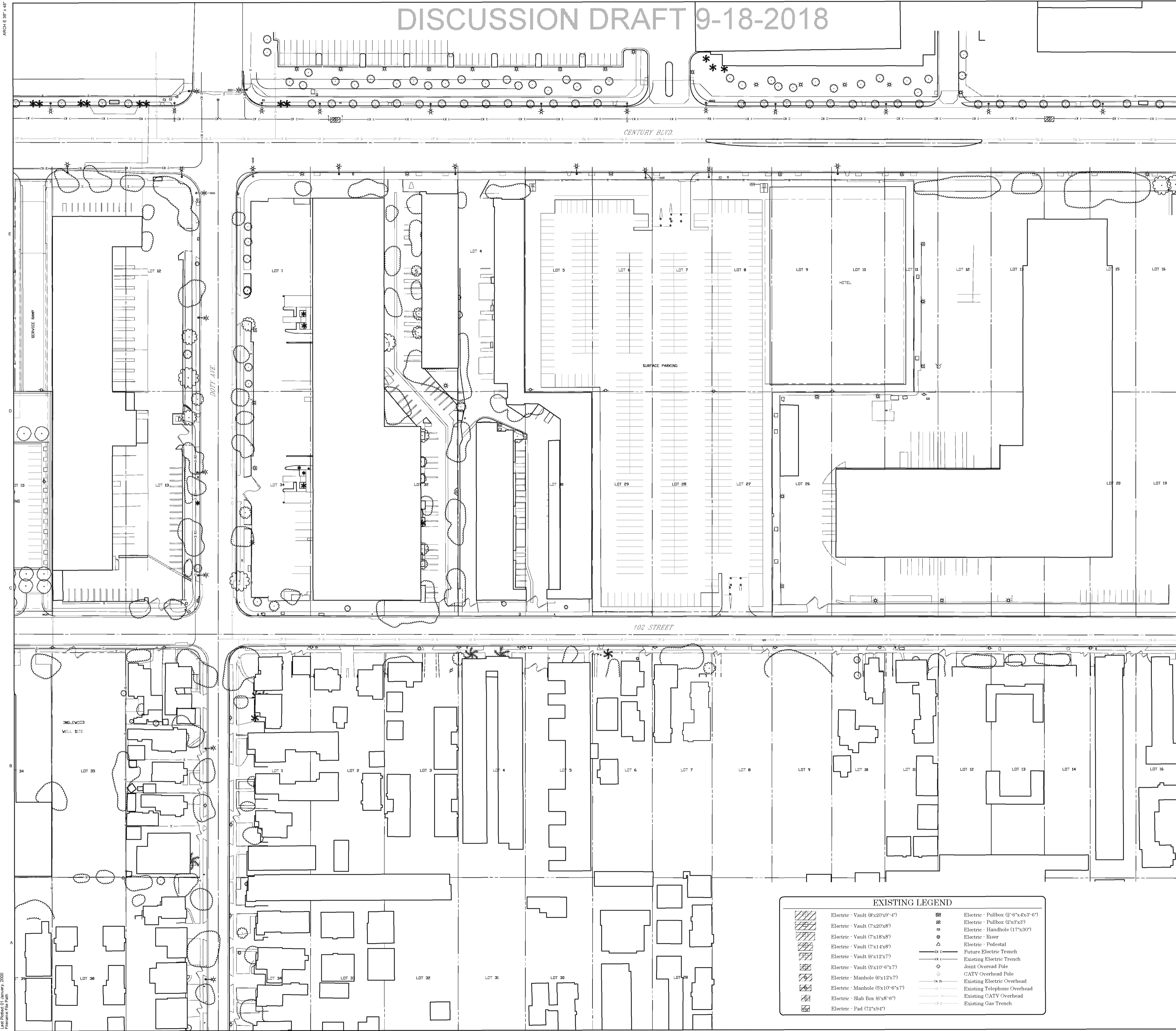
SHEET TITLE

PROPOSED DRY UTILITIES

SHEET NUMBER

CD-103A

© 2015 AECOM TECHNICAL SERVICES, INC.



EXISTING LEGEND

	Electric - Vault (8x20x9'-4")		Electric - Pullbox (2'-6"x4x3'-0")
	Electric - Vault (7x20x8')		Electric - Pullbox (2'x3'x3')
	Electric - Vault (7x18x8')		Electric - Handhole (17"x30")
	Electric - Vault (7x14x8')		Electric - Busbar
	Electric - Vault (6'x12x7')		Electric - Pedestal
	Electric - Vault (5'x10'-6"x7')		Future Electric Trench
	Electric - Manhole (6'x12x7')		Existing Electric Trench
	Electric - Manhole (5'x10'-6"x7')		Joint Overhead Pole
	Electric - Slab Box (6'x8'-6")		CATV Overhead Pole
	Electric - Pad (72"x9'4")		Existing Electric Overhead
			Existing Telephone Overhead
			Existing CATV Overhead
			Existing Gas Trench

Project Management Initials: Approved: AFR
 Designer: CSC Checked: CHK
 Filenamer: File Path

Printed on Recycled Paper