

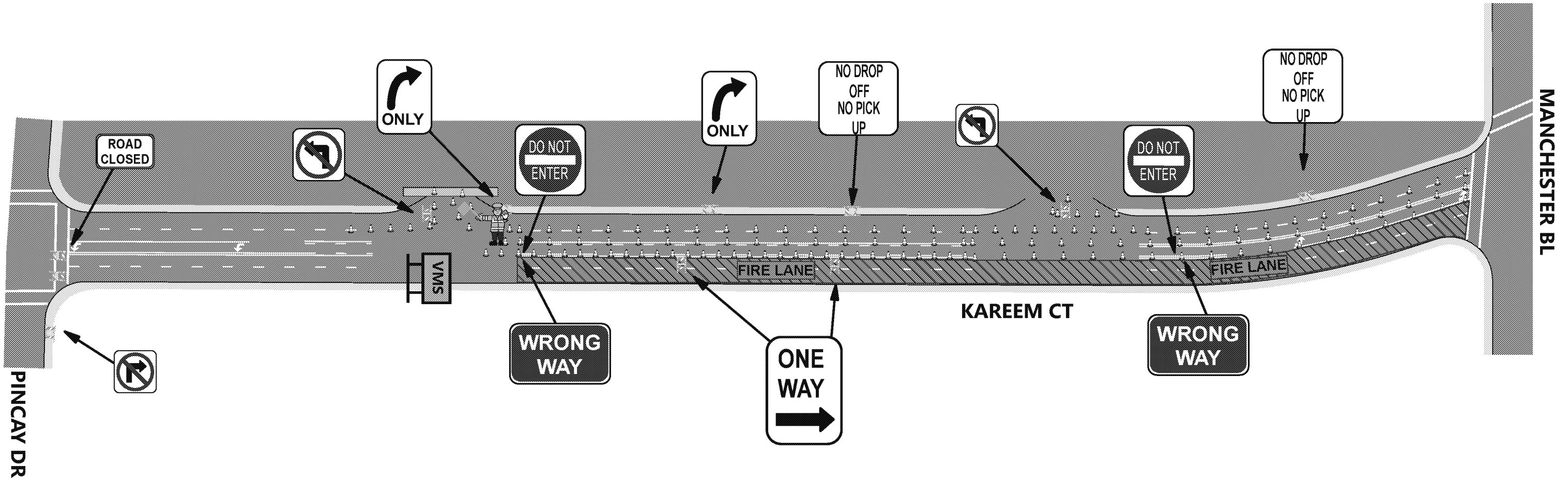
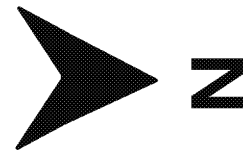


**LEGEND**

-  TRAFFIC CONE
-  TYPE II BARRICADE




**A+ TRAFFIC MANAGEMENT, INC**  
OFFICE: (213) 747-0215

<b>FORUM TCP B (6,000 - 14,000)</b>	
SCALE:	DRAWN BY:
DATE:	REVISED:
<b>KAREEM INBOUND</b>	
© A+ TRAFFIC MANAGEMENT INC, 2018 - 2019. ALL RIGHTS RESERVED	SHEET NO: <b>6 OF 15</b>

**GENERAL NOTE:**  
ALL SIGNS, STRIPES, DELINEATORS, BARRICADES AND OTHER TRAFFIC CONTROL DEVICES AND THEIR INSTALLATION SHALL CONFORM TO THE LATEST EDITIONS OF THE FOLLOWING DOCUMENTS: THE STATE OF CALIFORNIA STANDARD SPECIFICATIONS, AND THE CALIFORNIA MANUAL ON UNIFORM TRAFFIC CONTROL DEVICES. IN THE EVENT OF CONFLICT BETWEEN THESE TWO DOCUMENTS, THE MOST STRINGENT REQUIREMENT SHALL APPLY. SIGN SIZES SHALL BE THOSE SHOWN AS "STANDARD", OR LARGER, IN THE CALIFORNIA MANUAL ON UNIFORM TRAFFIC CONTROL DEVICES.