

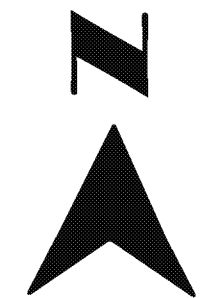
A+ TRAFFIC MANAGEMENT, INC

213. 494. 7154

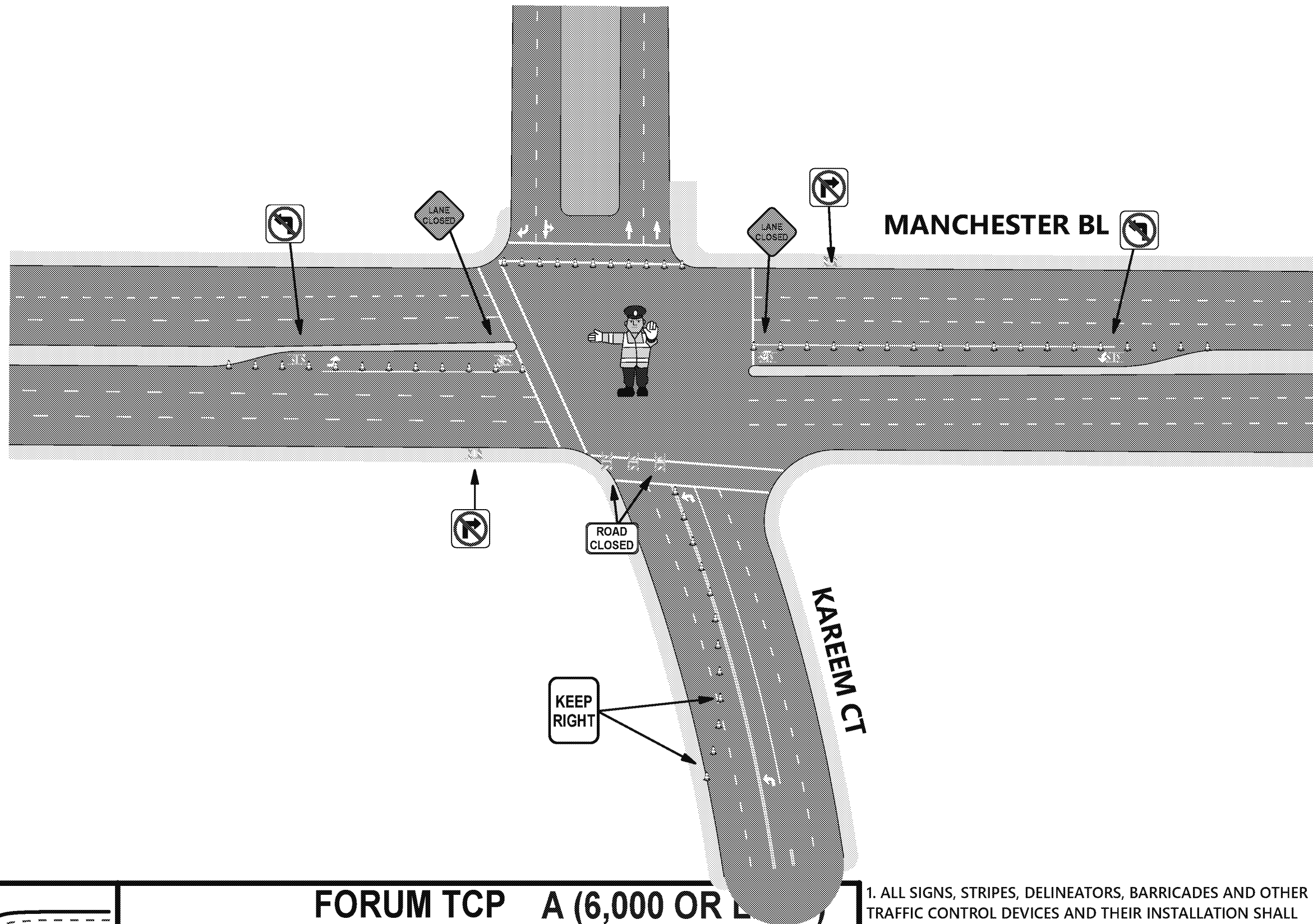
Traffic Control Services
Equipment Rentals
Permits & Consulting
Traffic Engineering

LEGEND

- ROAD CLOSED R11-2
- ROAD CLOSED AHEAD W20-3
- LANE CLOSED C30(CA)
- R3-1
- R3-2



CEMETARY CLOSED



FORUM TCP A (6,000 OR L)

SCALE: NOT TO SCALE	DRAWN BY: S.F.
DATE:	VERSION#:1
KAREEM & MANCHESTER BL OUTBOUND	
© A+ TRAFFIC MANAGEMENT INC, 2018 - 2019. ALL RIGHTS RESERVED	SHEET NO: 7 OF 11

1. ALL SIGNS, STRIPES, DELINEATORS, BARRICADES AND OTHER TRAFFIC CONTROL DEVICES AND THEIR INSTALLATION SHALL CONFORM TO THE LATEST EDITIONS OF THE FOLLOWING DOCUMENTS: THE STATE OF CALIFORNIA STANDARD SPECIFICATIONS, AND THE CALIFORNIA MANUAL ON UNIFORM TRAFFIC CONTROL DEVICES. IN THE EVENT OF CONFLICT BETWEEN THESE TWO DOCUMENTS, THE MOST STRINGENT REQUIREMENT SHALL APPLY. SIGN SIZES SHALL BE THOSE SHOWN AS "STANDARD", OR LARGER, IN THE CALIFORNIA MANUAL ON UNIFORM TRAFFIC CONTROL DEVICES.

A+ TRAFFIC MANAGEMENT, INC
OFFICE: (213) 747-0215