

MANCHESTER BL

AV

NUTWOOD ST

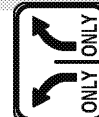
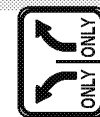
PRAIRIE

KELSO

OSAGE

* CLOSED AS NEEDED

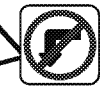
* CLOSED AS NEEDED



ROAD CLOSED

R11-2 ROAD CLOSED

ROAD CLOSED



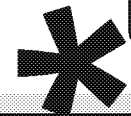
R3-2



R3-5



R3-1

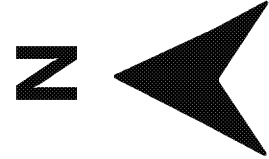


STOP

STOP

STOP

STOP



A+ TRAFFIC MANAGEMENT, INC

OFFICE: (213) 747-0215

FORUM TCP C (14,000 - SOLDOUT)

SCALE: NOT TO SCALE

DRAWN BY: S.F.

PRAIRIE/ OSAGE INBOUND

© A+ TRAFFIC MANAGEMENT INC, 2018- 2019. ALL RIGHTS RESERVED

SHEET NO: **4 OF 18**