



DEVELOPER  
**MURPHY'S BOWL LLC**  
10400 NE 4th St, Suite 3000  
Bellevue, WA 98004

DEVELOPER'S MANAGING AGENT  
**WILSON MEANY**  
6701 Center Drive, Suite 950  
Los Angeles, CA 90044  
310.352.2000 tel  
http://wilsonmeany.com/

ARCHITECT / PLANNING /  
ENGINEERING / TRANSPORTATION

**AECOM**  
AECOM TECHNICAL SERVICES, INC.  
2380 McGee, Suite 200  
Kansas City, MO 64108  
816.951.4443 tel / 816.561.2863 fax  
www.aecom.com

CIVIL ENGINEER  
**D&D ENGINEERING, INC**  
8801 S. La Cienega Blvd, Suite 106  
Inglewood, CA 90303  
424.351.6900 tel

DRY UTILITY SYSTEMS  
**BJ PALMER & ASSOCIATES, INC**  
28245 Crocker Avenue  
Van Nuys, CA 91411  
780.842.7510 tel

PARKING  
**WALKER CONSULTANTS**  
608 S. Olive St, Suite 1100  
Los Angeles, CA 90014  
213.458.6911 tel

SHORING ENGINEER  
**DRS ENGINEERING, INC**  
3564 Sagunto Street, Suite 468  
Santa Ynez, CA 93460  
818.402.3062 tel

**REGISTRATION**  
This drawing has been prepared for the use of AECOM's client and may not be used, reproduced or relied upon by third parties, except as agreed by AECOM and its client, as required by law or for use by governmental reviewing agencies. AECOM accepts no responsibility, and denies any liability whatsoever, to any party that modifies this drawing without AECOM's express written consent. Do not scale this document. All measurements must be obtained from the stated dimensions.

**NOT FOR CONSTRUCTION**

**ISSUE/REVISION**

NO.	DATE	DESCRIPTION

SEP 14, 2018 EIR DOCUMENTS

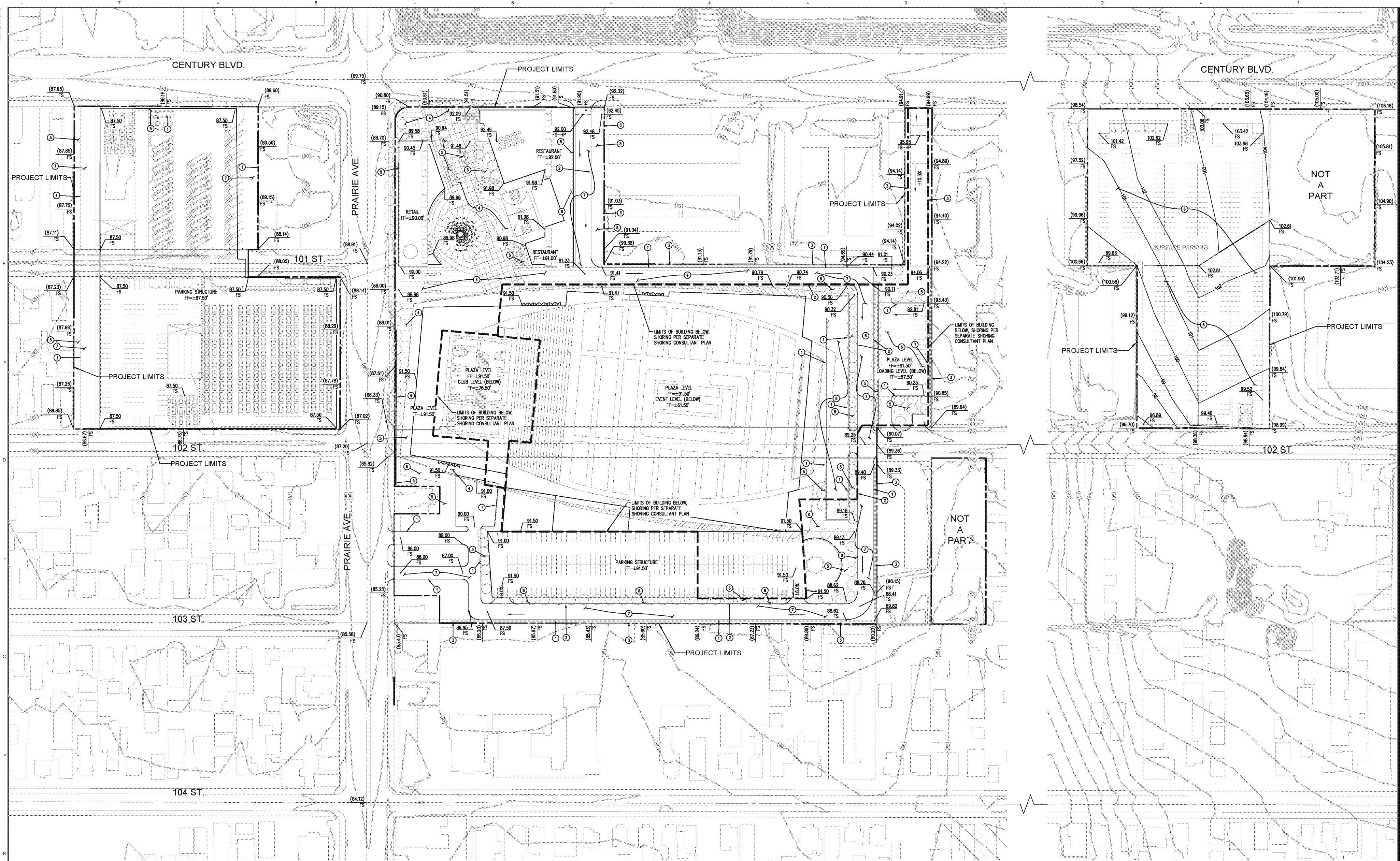
**KEY PLAN**

PROJECT NUMBER  
17001-100

SHEET TITLE  
Preliminary Grading Plan

SHEET NUMBER  
**C-202A**

© 2015 AECOM TECHNICAL SERVICES, INC.

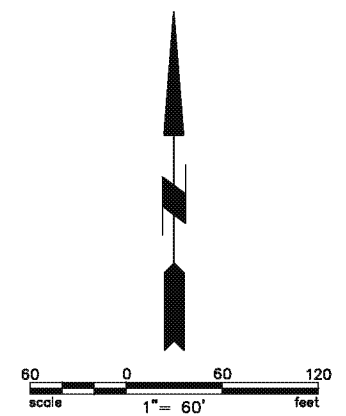


**LEGEND**

- BOUNDARY
- RIGHT OF WAY
- LIMITS OF SHORING

**GRADING NOTES**

- 1 6" CONCRETE CURB ONLY
- 2 6" CONCRETE CURB AND 18" GUTTER
- 3 PROPOSED WALL
- 4 HARDSCAPE PER LANDSCAPE PLANS
- 5 LANDSCAPE PER LANDSCAPE PLANS
- 6 AC PAVEMENT, 4" AC OVER 7" AB. LIGHT VEHICULAR LOADING
- 7 AC PAVEMENT, 5" AC OVER 8" AB. HEAVY VEHICULAR LOADING
- 8 CONCRETE PAVEMENT/SDI WALK, 4" PCC OVER 6" AB. PEDESTRIAN TRAFFIC LOADING
- 9 RETAINING WALL, H=±6' MAX



**DISCUSSION DRAFT 9-19-2019**