

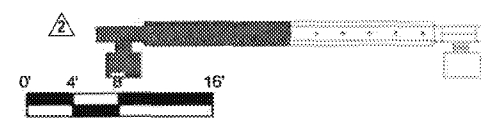
PARTIAL PLATFORM PLAN
1/8" = 1'-0"

M Metro

- APPROVED
- APPROVED AS NOTED (no resubmittal required)
- REJECTED, REVISE & RESUBMIT
- FOR RECORD ONLY

Director, Construction MGR/ Engineer: *[Signature]* Date: *6/23/16*

301 D1 DOORTAG SEE SHEET A-3501



PACKAGE B-1.4

REV	DATE	BY	APP	REG NO	EXPIRES	SEAL HOLDER	DESCRIPTION
1	4/29/16	AH	RP	C34273	11/30/17	R. PAPOCCHIA	NDC 086
2	3/11/16	AH	RP	C34273	11/30/17	R. PAPOCCHIA	NDC 081
3	10/21/15	ES	ES	C25553	03/31/17	E. SANCHEZ	NDC 085
0	5/21/15			C25553	03/31/17	E. SANCHEZ	AFC SUBMITTAL

DESIGNED BY: E. SANCHEZ
 DRAWN BY: R. RESURRECCION
 CHECKED BY: S. SOGHOMONIAN
 IN CHARGE: E. SANCHEZ
 DATE: 5/21/15

A SIGNED & SEALED ORIGINAL OF REV 0 OF THIS DRAWING IS MAINTAINED BY WSCC

M Metro LOS ANGELES COUNTY METROPOLITAN TRANSPORTATION AUTHORITY

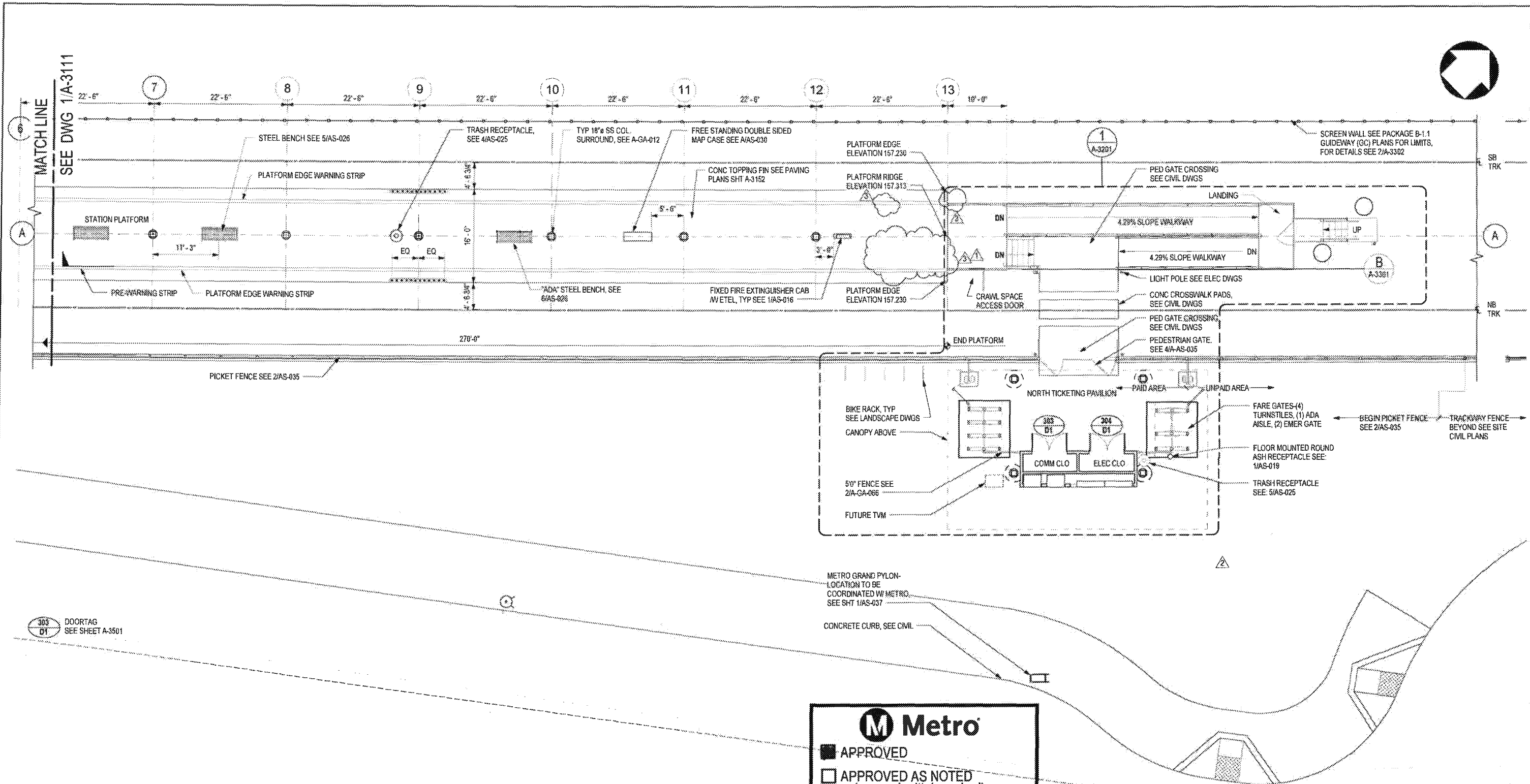
WALSH-SHEA CORRIDOR CONSTRUCTORS
1777 Oakland Blvd.
Walnut Creek, CA 94596

HNTB
STEVE WHITAKER APPROVED

EFRAIN SANCHEZ
SUBMITTED

CRENSHAW/LAX TRANSIT CORRIDOR PROJECT
FLORENCE / LA BREA STATION
PLATFORM LEVEL PLAN

CONTRACT NO.	C0988
DRAWING NO.	A-3111
SCALE	1/8" = 1'-0"
SHEET NO.	3



M Metro

- APPROVED
- APPROVED AS NOTED (no resubmittal required)
- REJECTED, REVISE & RESUBMIT
- FOR RECORD ONLY

Director, Construction MGR/ Engineer: *[Signature]* Date: *10/23/16*

PARTIAL PLATFORM PLAN
1/8" = 1'-0"

PACKAGE B-1.4

REV	DATE	BY	APP	REG NO	EXPIRES	SEAL HOLDER	DESCRIPTION
0	5/21/15			C25553	03/31/17	E. SANCHEZ	AFC SUBMITTAL
1	10/21/15	ES	ES	C25553	03/31/17	E. SANCHEZ	
2	3/11/16	AH	RP	C34273	11/30/17	R. PAPOCCHIA	NDC 081
3	4/29/16	AH	RP	C34273	11/30/17	R. PAPOCCHIA	NDC 086

LOS ANGELES COUNTY METROPOLITAN TRANSPORTATION AUTHORITY

Metro

WALSH-SHEA CORRIDOR CONSTRUCTORS
1777 Oakland Blvd.
Walnut Creek, CA 94596

HNTB
STEVE WHITAKER
APPROVED

WSP
EFRAIN SANCHEZ
SUBMITTED

A SIGNED & SEALED ORIGINAL OF REV 0 OF THIS DRAWING IS MAINTAINED BY WSCC

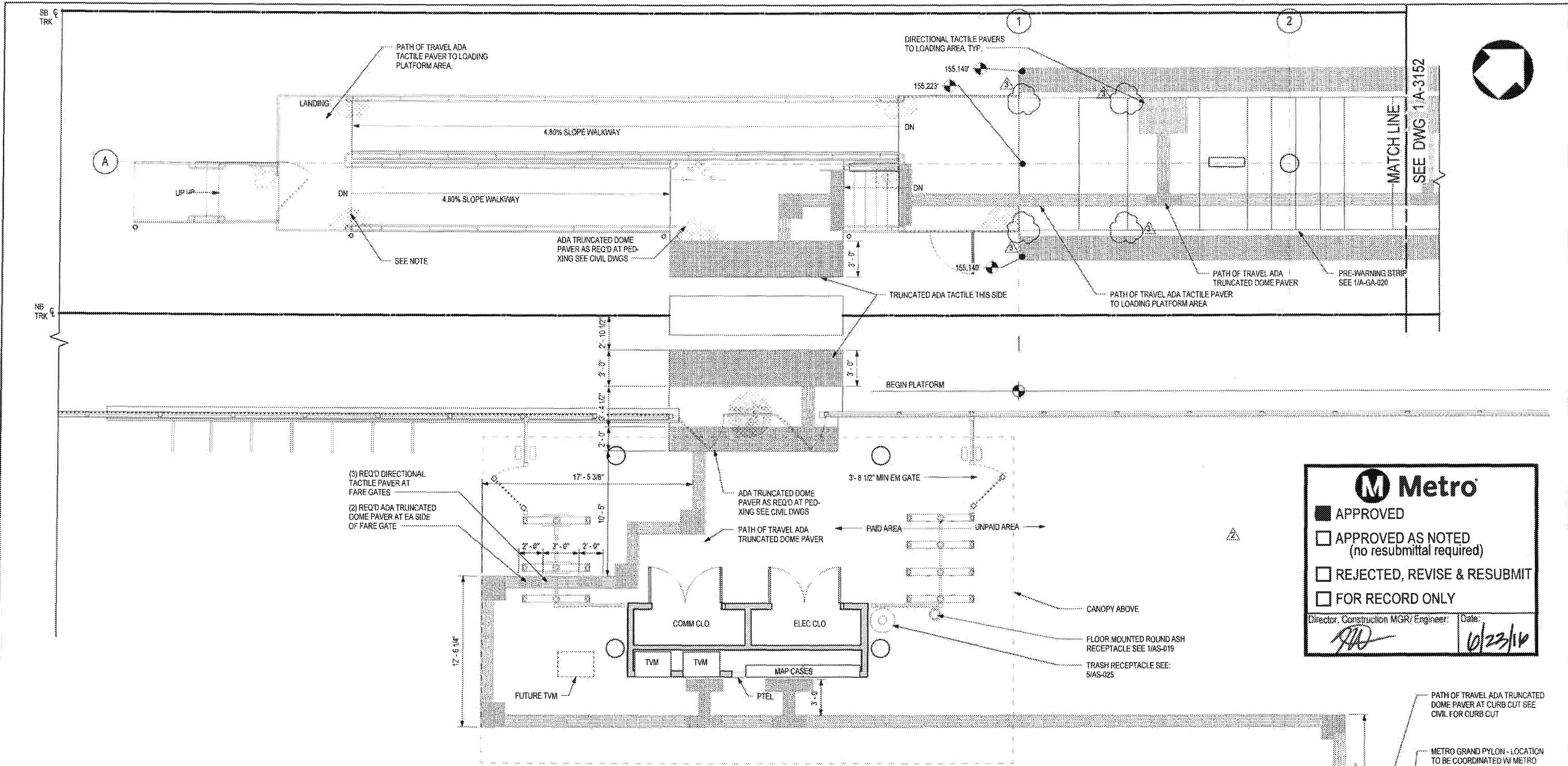
CRENSHAW/LAX TRANSIT CORRIDOR PROJECT FLORENCE / LA BREA STATION PLATFORM LEVEL PLAN

CONTRACT NO: **C0988**

DRAWING NO: **A-3112**

SCALE: **1/8" = 1'-0"**

SHEET NO: **3**



M Metro

- APPROVED
- APPROVED AS NOTED (no resubmittal required)
- REJECTED, REVISE & RESUBMIT
- FOR RECORD ONLY

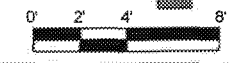
Director, Construction MGR/Engineer: *[Signature]* Date: *6/23/16*

- LEGEND**
- SEALED CONCRETE
 - 1' X 1' TRUNCATED DOME PATTERN ADA TACTILE. REFER TO SHT AS-038 & AS-039 FOR DETAILS
 - 1' X 1' DIRECTIONAL BAR PATTERN ADA TACTILE. REFER TO SHT AS-038 & AS-039 FOR DETAILS

NOTE

COLOR ARCHITECTURAL TOPPING SLAB PATTERN NOT RELEASED FOR CONSTRUCTION, TO BE APPROVED BY METRO THROUGH NDC.

PARTIAL PAVING PLAN
1/4" = 1'-0"



THE PREPARATION OF THIS DRAWING HAS BEEN FINANCED IN PART THROUGH A GRANT FROM THE U.S. DEPARTMENT OF TRANSPORTATION, FEDERAL TRANSIT ADMINISTRATION (FTA), UNDER THE FEDERAL TRANSIT ACT OF 1964, AS AMENDED, AND IN PART BY THE TAXES OF THE CITIZENS OF LOS ANGELES COUNTY AND OF THE STATE OF CALIFORNIA

REV	DATE	BY	APP	REG NO	EXPIRES	REAL HOLDER	DESCRIPTION
1	4/29/16	AH	RP	C34273	11/30/17	NDC 086	
2	3/11/16	AH	RP	C34273	11/30/17	R. PAPOCCHIA	NDC 081
3	10/21/15	ES	ES	C25553	03/31/17	E. SANCHEZ	NDC 065
0	9/21/15			C25553	03/31/17	E. SANCHEZ	AFC SUBMITTAL

DESIGNED BY: E. SANCHEZ
 DRAWN BY: R. RESURRECCION
 CHECKED BY: S. SOGHOMONIAN
 IN CHARGE: E. SANCHEZ
 DATE: 9/21/15

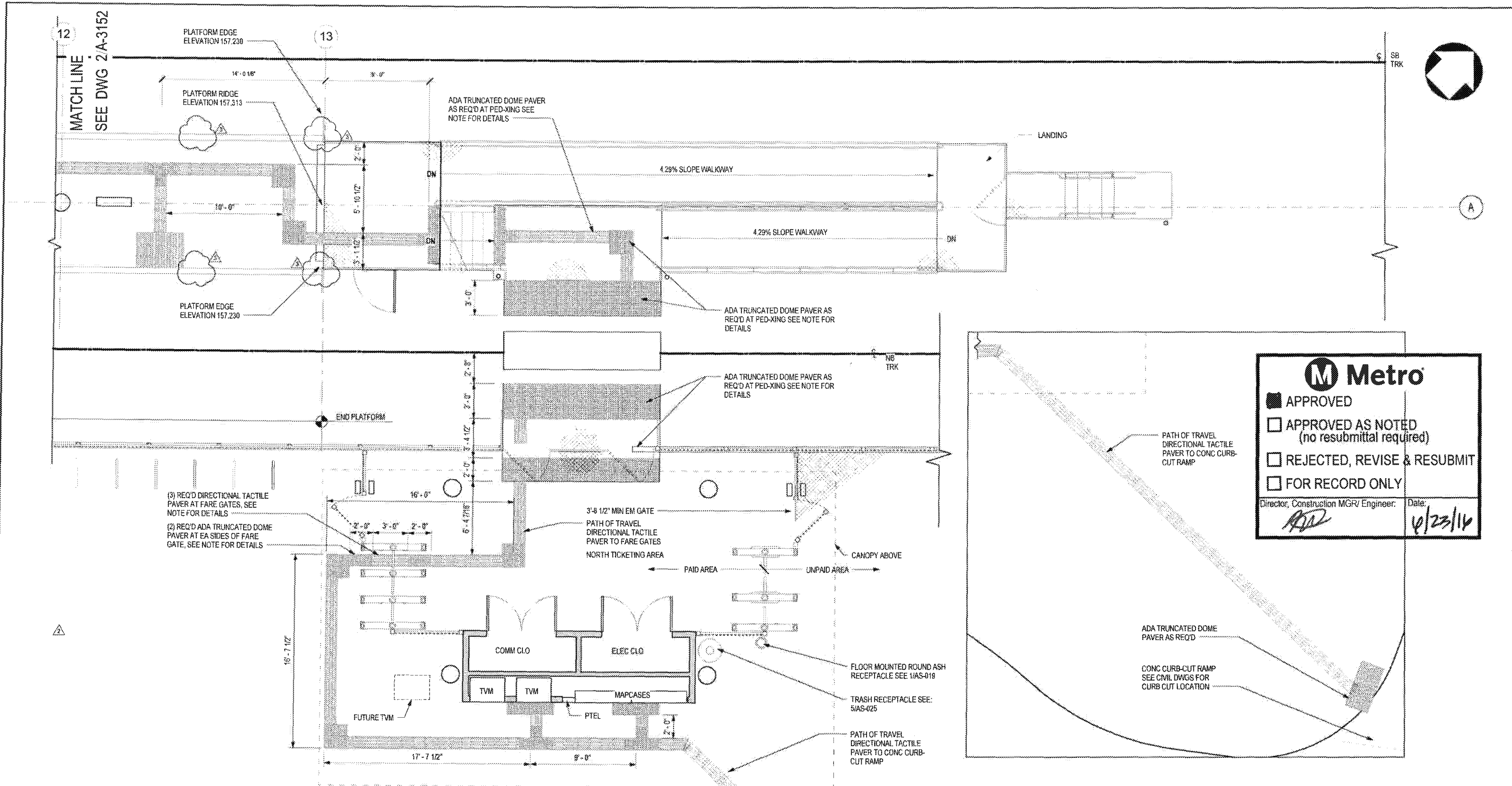
M LOS ANGELES COUNTY METROPOLITAN TRANSPORTATION AUTHORITY
Metro
 WALSH-SHEA CORRIDOR CONSTRUCTORS
 1777 Oakland Blvd.
 Walnut Creek, CA 94596

HNTB
 STEVE WHITAKER
 APPROVED

MTM
 EFRAIN SANCHEZ
 SUBMITTED

CRENSHAW/LAX TRANSIT CORRIDOR PROJECT
FLORENCE / LA BREA STATION
PARTIAL PAVING PLAN 1 OF 3

CONTRACT NO:	C0988
DRAWING NO:	A-3151
SCALE:	1/4" = 1'-0"
SHEET NO:	3



M Metro

APPROVED

APPROVED AS NOTED (no resubmittal required)

REJECTED, REVISE & RESUBMIT

FOR RECORD ONLY

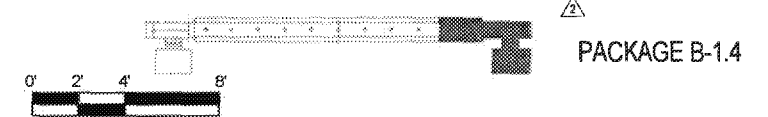
Director, Construction MGR/ Engineer: *ASD* Date: *6/23/16*

- LEGEND**
- SEALED CONCRETE
 - 1' X 1' TRUNCATED DOME PATTERN ADA TACTILE. REFER TO SHT AS-038 & AS-039 FOR DETAILS
 - 1' X 1' DIRECTIONAL BAR PATTERN ADA TACTILE. REFER TO SHT AS-038 & AS-039 FOR DETAILS

NOTE

COLOR ARCHITECTURAL TOPPING SLAB PATTERN NOT RELEASED FOR CONSTRUCTION, TO BE APPROVED BY METRO THROUGH NDC.

PARTIAL PAVING PLAN
1/4" = 1'-0"



REV	DATE	BY	APP	REG NO	EXPIRES	SEAL HOLDER	DESCRIPTION
1	4/29/16	AH	RP	C34273	11/30/17	N	NDC 086
2	3/11/16	AH	RP	C34273	11/30/17	R. PAPOCCHIA	NDC 081
3	10/21/15	ES	ES	C25553	03/31/17	E. SANCHEZ	NDC 065
0	5/21/15			C25553	03/31/17	E. SANCHEZ	AFC SUBMITTAL

DESIGNED BY: E. SANCHEZ
 DRAWN BY: R. RESURRECCION
 CHECKED BY: S. SOGHOMONIAN
 IN CHARGE: E. SANCHEZ
 DATE: 5/21/16

A SIGNED & SEALED ORIGINAL OF REV 0 OF THIS DRAWING IS MAINTAINED BY WSCC

Metro LOS ANGELES COUNTY METROPOLITAN TRANSPORTATION AUTHORITY
 1777 Oakland Blvd. Walnut Creek, CA 94596

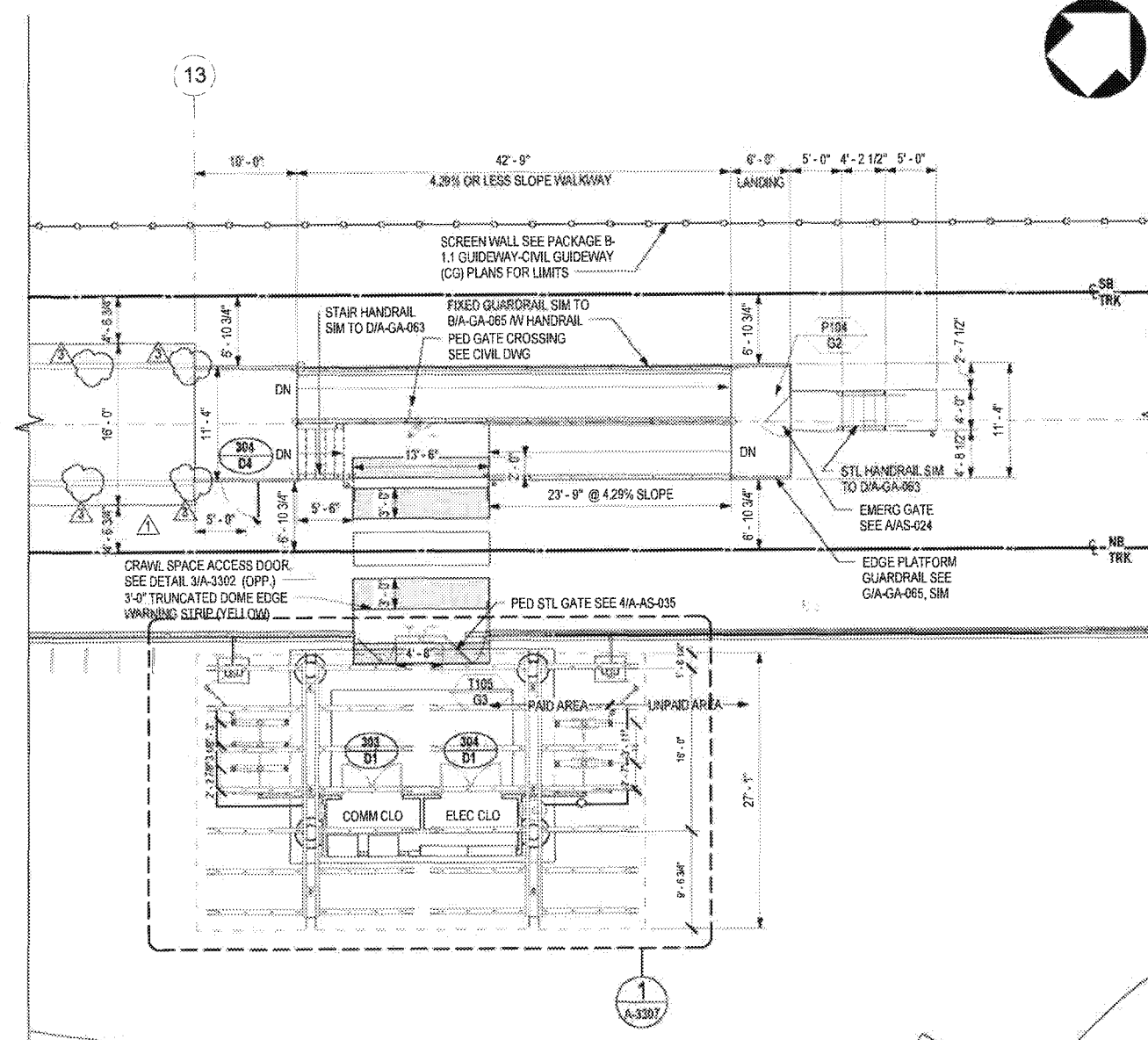
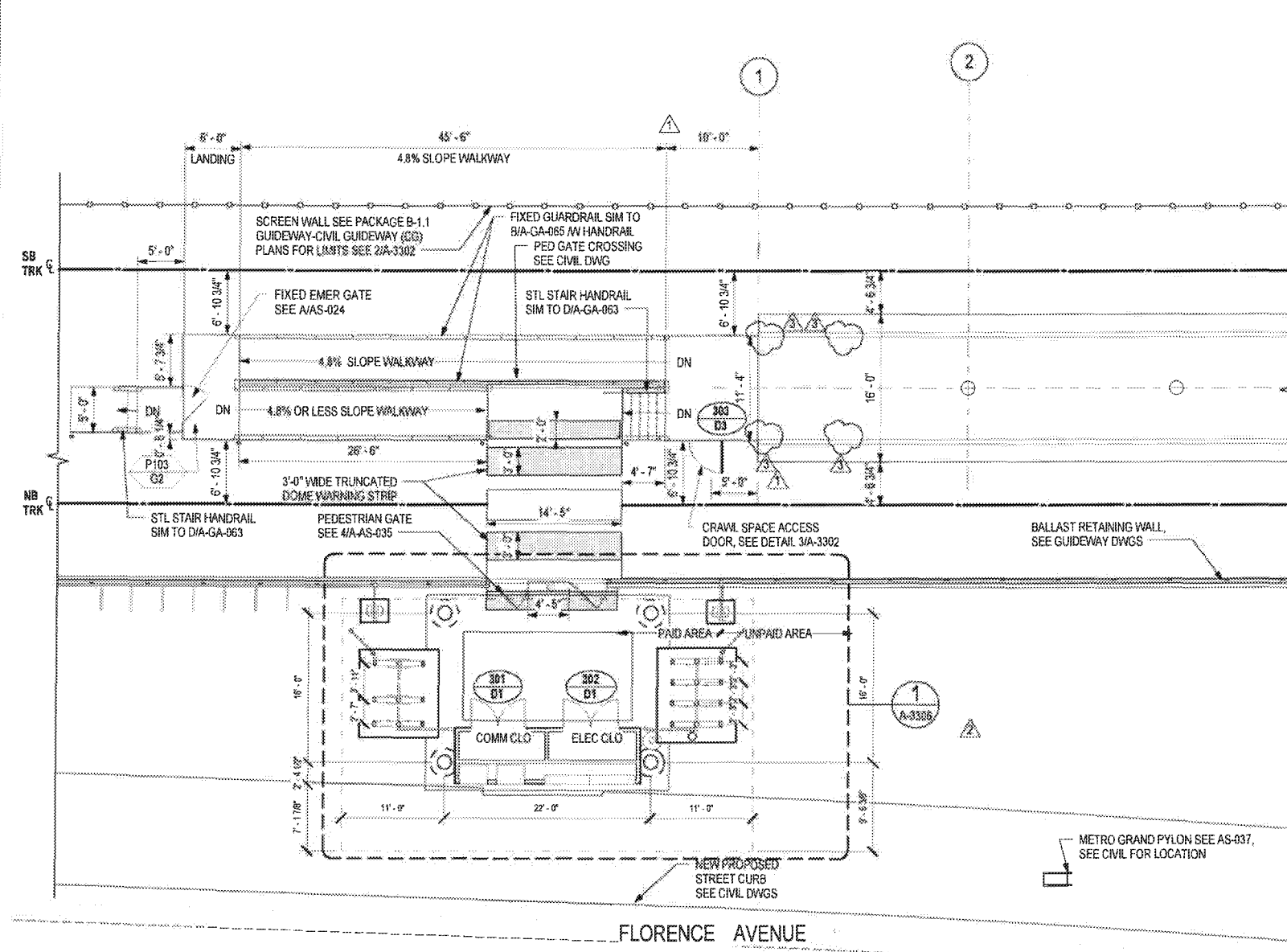
WALSH-SHEA CORRIDOR CONSTRUCTORS

HNTB STEVE WHITAKER APPROVED

WSP EFRAIN SANCHEZ SUBMITTED

CRENSHAW/LAX TRANSIT CORRIDOR PROJECT
FLORENCE / LA BREA STATION
PARTIAL PAVING PLAN 3 OF 3

CONTRACT NO	C09888
DRAWING NO	A-3153
SCALE	1/4" = 1'-0"
SHEET NO	3



ENLARGED FAIR GATES
TICKETING AREA &
ENTRANCE
1/8" = 1'-0"

2
A-3291

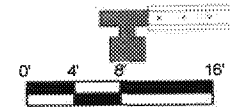
ENLARGED FAIR GATES
TICKETING AREA AND
ENTRANCE
1/8" = 1'-0"

1
A-3291

M Metro

APPROVED
 APPROVED AS NOTED (no resubmittal required)
 REJECTED, REVISE & RESUBMIT
 FOR RECORD ONLY

Director, Construction MGR/ Engineer: *[Signature]* Date: 4/23/14



PACKAGE B-1.4

REV	DATE	BY	APP	REG NO	EXPIRES	SEAL NO/SEAL	DESCRIPTION
1	4/28/16	AH	RP	C34273	11/30/17		NDC 086
2	2/22/16	AH	RP	C34273	11/30/17	R. PAPOCCHIA	NDC 081
3	10/21/15	ES	ES	C25553	03/31/17	E. SANCHEZ	NDC 065
0	5/21/15			C25553	03/31/17	E. SANCHEZ	AFC SUBMITTAL

DEMANDER BY: E. SANCHEZ	DRAWN BY: R. RESURRECCION
CHECKED BY: S. SOGHOMONIAN	IN CHARGE: E. SANCHEZ
DATE: 5/21/15	

M Metro LOS ANGELES COUNTY METROPOLITAN TRANSPORTATION AUTHORITY

WALSH-SHEA CORRIDOR CONSTRUCTORS
1777 Oakland Blvd.
Walnut Creek, CA 94596

HNTB STEVE WHITAKER APPROVED

WSP EFRAN SANCHEZ SUBMITTED

A SIGNED & SEALED ORIGINAL OF REV 0 OF THIS DRAWING IS MAINTAINED BY WSCC

CRENSHAW/LAX TRANSIT CORRIDOR PROJECT
FLORENCE / LA BREA STATION
ENLARGED PLAN - STAIRS AND SLOPE WALKWAY

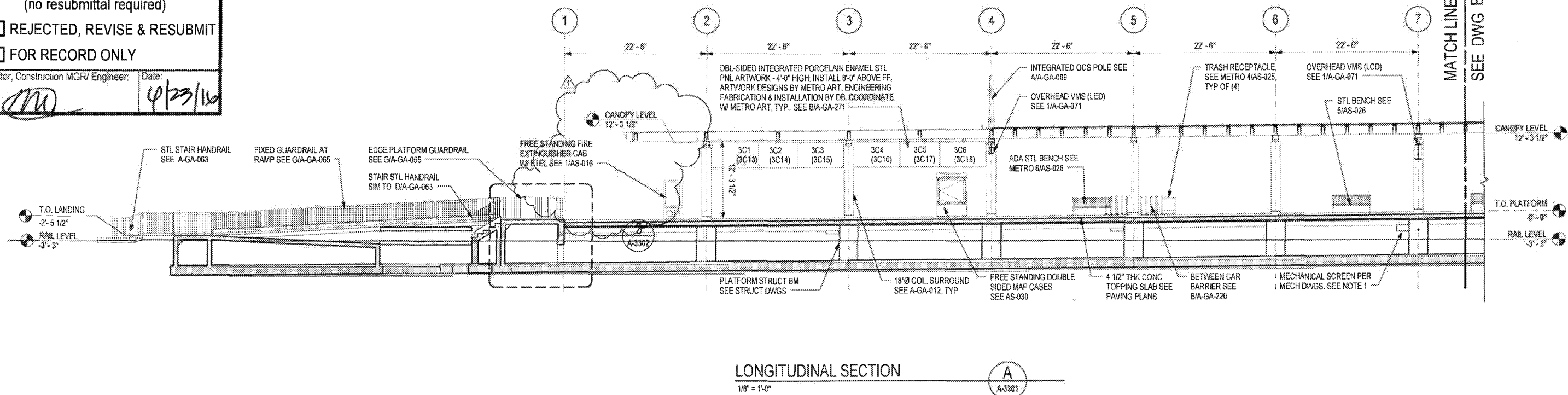
CONTRACT NO. C0988	REV 3
DRAWING NO. A-3201	SCALE 1/8" = 1'-0"
SHEET NO.	



- APPROVED
- APPROVED AS NOTED
(no resubmittal required)
- REJECTED, REVISE & RESUBMIT
- FOR RECORD ONLY

Director, Construction MGR/ Engineer: Date:

[Signature] 4/23/16



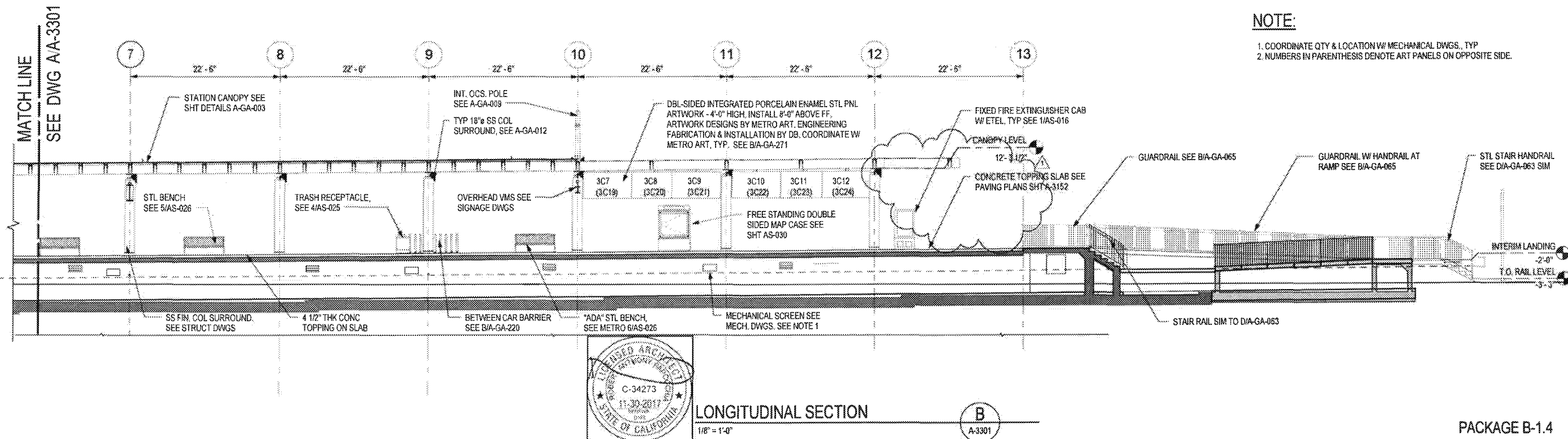
LONGITUDINAL SECTION

1/8" = 1'-0"

A
A-3301

NOTE:

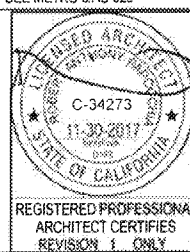
1. COORDINATE QTY & LOCATION W/ MECHANICAL DWGS, TYP
2. NUMBERS IN PARENTHESIS DENOTE ART PANELS ON OPPOSITE SIDE.



LONGITUDINAL SECTION

1/8" = 1'-0"

B
A-3301



REGISTERED PROFESSIONAL ARCHITECT CERTIFIES REVISION 1 ONLY

A SIGNED & SEALED ORIGINAL OF REV 0 OF THIS DRAWING IS MAINTAINED BY WSCC

LOS ANGELES COUNTY METROPOLITAN TRANSPORTATION AUTHORITY

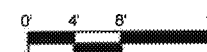


WALSH-SHEA CORRIDOR CONSTRUCTORS

1777 Oakland Blvd.
Walnut Creek, CA 94596



HNTB Corporation
601 West 9th Street, Suite 1000
Los Angeles, CA 90071



PACKAGE B-1.4

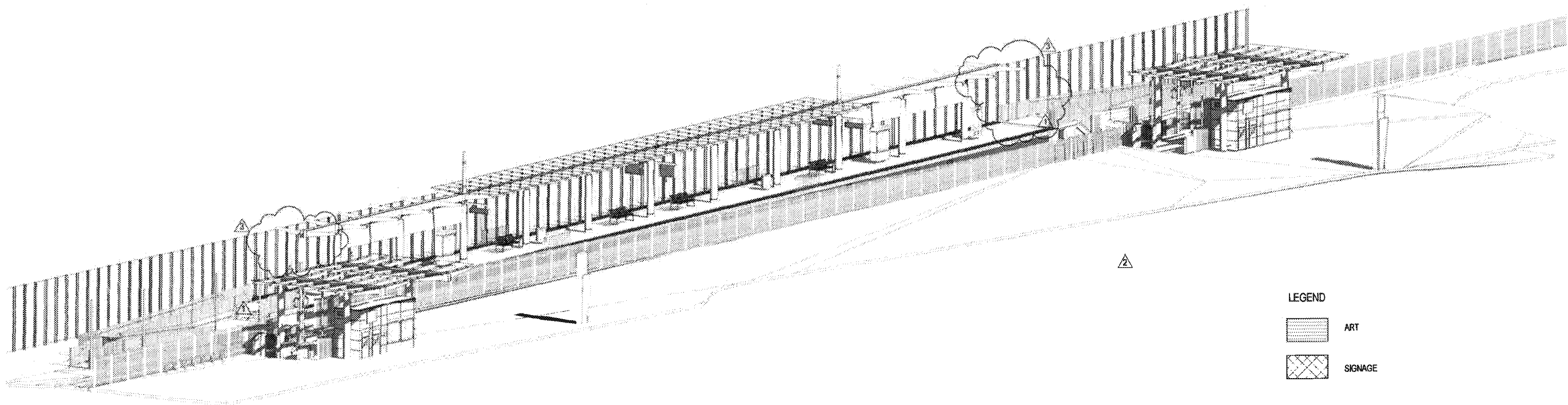
THE PREPARATION OF THIS DRAWING HAS BEEN FINANCED IN PART THROUGH A GRANT FROM THE U.S. DEPARTMENT OF TRANSPORTATION, FEDERAL TRANSIT ADMINISTRATION (FTA), UNDER THE FEDERAL TRANSIT ACT OF 1964, AS AMENDED, AND IN PART BY THE TAXES OF THE CITIZENS OF LOS ANGELES COUNTY AND OF THE STATE OF CALIFORNIA.

REV	DATE	BY	APP	REG NO	EXPIRES	SEAL HOLDER	DESCRIPTION
0	5/21/15			C25553	03/31/17	E. SANCHEZ	AFC SUBMITTAL
	4/28/16	AS	RS	C34273	11/30/17		NDC 086

DESIGNED BY
E. SANCHEZ
DRAWN BY
R. RESURRECCION
CHECKED BY
S. SOGHOMONIAN
IN CHARGE
E. SANCHEZ
DATE
5/21/15

CRENSHAW/LAX
TRANSIT CORRIDOR PROJECT
FLORENCE / LA BREA STATION
LONGITUDINAL SECTION /
ELEVATION

CONTRACT NO C0988	REV 1
DRAWING NO A-3301	
SCALE 1/8" = 1'-0"	
SHEET NO	



LEGEND

	ART
	SIGNAGE

AXONOMETRIC VIEW

1
A-3801

M Metro

APPROVED

APPROVED AS NOTED (no resubmittal required)

REJECTED, REVISE & RESUBMIT

FOR RECORD ONLY

Director, Construction MGR/ Engineer: *[Signature]* Date: *4/20/16*

PACKAGE B-1.4

THE PREPARATION OF THIS DRAWING HAS BEEN FINANCED IN PART THROUGH A GRANT FROM THE U.S. DEPARTMENT OF TRANSPORTATION, FEDERAL TRANSIT ADMINISTRATION (FTA), UNDER THE FEDERAL TRANSIT ACT OF 1964, AS AMENDED, AND IN PART BY THE TAXES OF THE CITIZENS OF LOS ANGELES COUNTY AND OF THE STATE OF CALIFORNIA

REV	DATE	BY	APP	REG NO	EXPIRES	SEAL HOLDER	DESCRIPTION
3	4/29/16	AH RP		C34273	11/30/17	<i>[Signature]</i>	NDC 086
2	3/11/16	AH RP		C34273	11/30/17	R. PAPOCCHIA	NDC 081
1	10/21/15	ES ES		C25553	03/31/17	E. SANCHEZ	NDC 065
0	5/21/15			C25553	03/31/17	E. SANCHEZ	AFC SUBMITTAL

DESIGNED BY
E. SANCHEZ

DRAWN BY
R. RESURRECCION

CHECKED BY
S. SOGHOMONIAN

IN CHARGE
E. SANCHEZ

DATE
5/21/15

A SIGNED & SEALED ORIGINAL OF REV 0 OF THIS DRAWING IS MAINTAINED BY WSCC

M Metro LOS ANGELES COUNTY METROPOLITAN TRANSPORTATION AUTHORITY

WALSH-SHEA CORRIDOR CONSTRUCTORS

1777 Oakland Blvd.
Walnut Creek, CA 94596

HNTB STEVE WHITAKER

WRM EFRAIN SANCHEZ

CRENSHAW/LAX TRANSIT CORRIDOR PROJECT FLORENCE / LA BREA STATION AXONOMETRIC VIEW - PLATFORM LEVEL

CONTRACT NO	C0988
DRAWING NO	A-3801
SCALE	NO SCALE
SHEET NO	3

06-May-16 4:11:37 PM