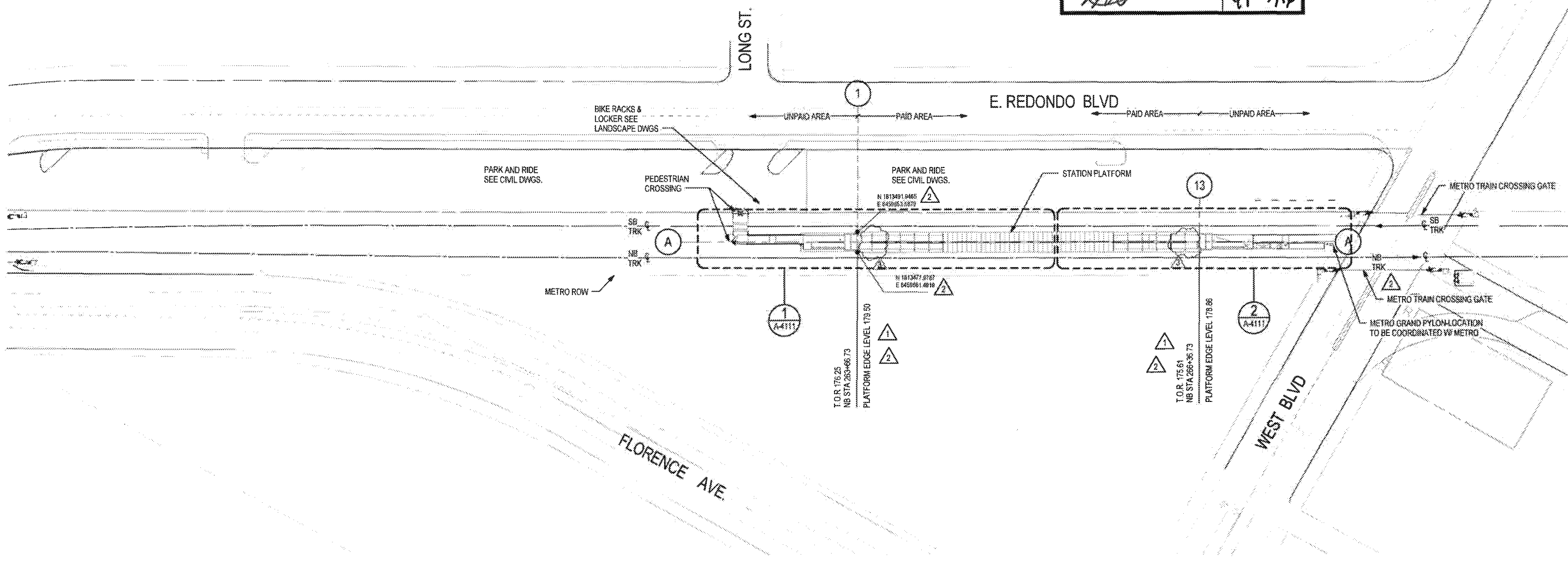




M Metro

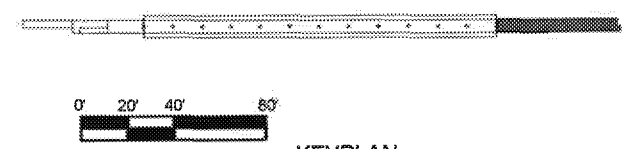
- APPROVED
- APPROVED AS NOTED (no resubmittal required)
- REJECTED, REVISE & RESUBMIT
- FOR RECORD ONLY

Director, Construction MGR/ Engineer: *[Signature]* Date: 4/29/16



SITE PLAN

1" = 40'-0"



KEYPLAN

PACKAGE B-1.4

THE PREPARATION OF THIS DRAWING HAS BEEN FINANCED IN PART THROUGH A GRANT FROM THE U.S. DEPARTMENT OF TRANSPORTATION, FEDERAL TRANSIT ADMINISTRATION (FTA), UNDER THE FEDERAL TRANSIT ACT OF 1964, AS AMENDED, AND IN PART BY THE TAXES OF THE CITIZENS OF LOS ANGELES COUNTY AND OF THE STATE OF CALIFORNIA

REV	DATE	BY	APP	REG NO	EXPIRES	REAL HOLDER	DESCRIPTION
0	4/29/16	AAH	RP	C34273	11/30/17	[Signature]	NDC 086
1	2/12/16	E.S.	E.S.	C25553	03/31/17	E. SANCHEZ	NDC 085
2	10/21/15	E.S.	E.S.	C25553	03/31/17	E. SANCHEZ	NDC 085
3	5/21/15			C25553	03/31/17	E. SANCHEZ	AFC SUBMITTAL

DESIGNED BY
E. SANCHEZ
DRAWN BY
R. RESURRECCION
CHECKED BY
S. SOGHOMONIAN
IN CHARGE
E. SANCHEZ
DATE
5/21/15

A SIGNED & SEALED ORIGINAL OF REV 0 OF THIS DRAWING IS MAINTAINED BY WSCC

M Metro LOS ANGELES COUNTY METROPOLITAN TRANSPORTATION AUTHORITY

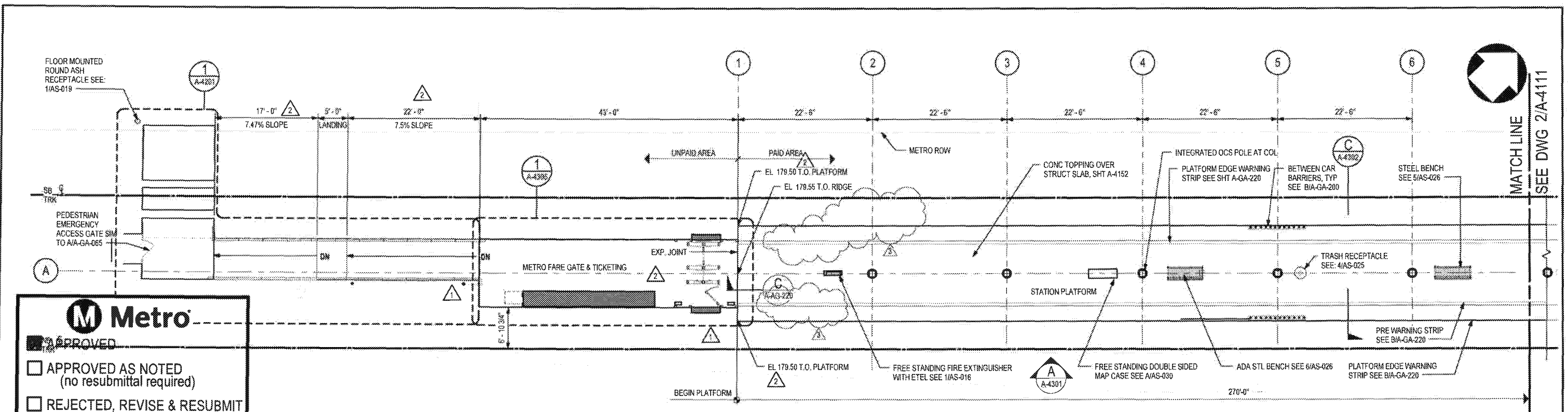
WALSH-SHEA CORRIDOR CONSTRUCTORS
1777 Oakland Blvd.
Walnut Creek, CA 94596

HNTB STEVE WHITAKER APPROVED

TRM EFRAN SANCHEZ SUBMITTED

CRENSHAW/LAX TRANSIT CORRIDOR PROJECT
FLORENCE / WEST STATION
SITE PLAN

CONTRACT NO. C0988	REV 3
DRAWING NO. A-4001	SCALE 1" = 40'-0"
SHEET NO.	



Metro

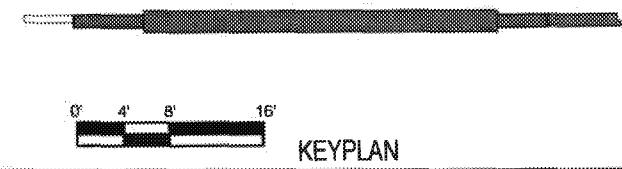
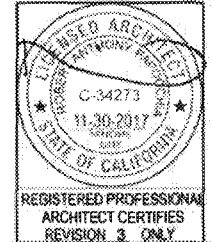
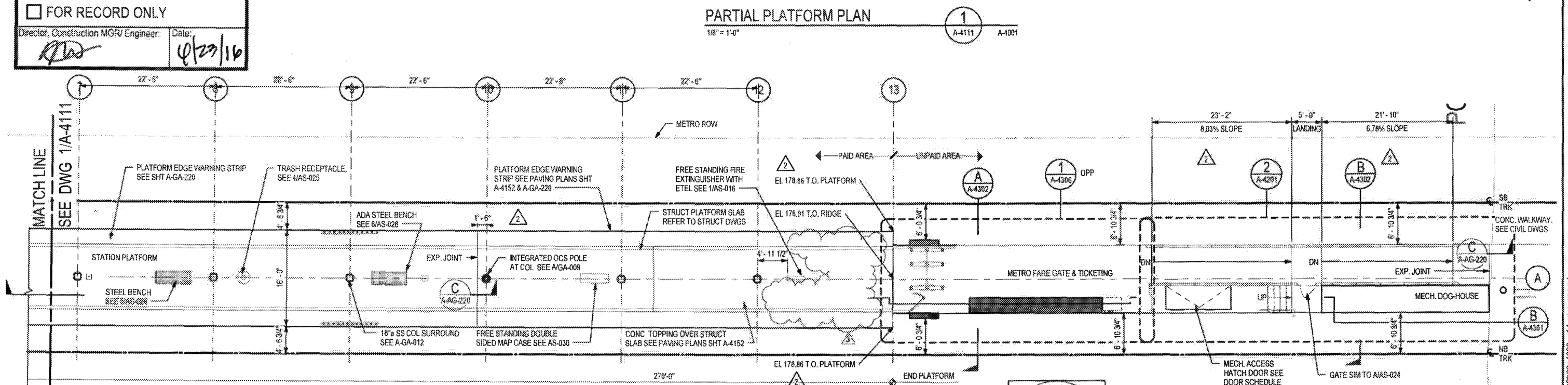
APPROVED

APPROVED AS NOTED (no resubmittal required)

REJECTED, REVISE & RESUBMIT

FOR RECORD ONLY

Director, Construction MGR/ Engineer: *[Signature]* Date: 10/22/16



THE PREPARATION OF THIS DRAWING HAS BEEN FINANCED IN PART THROUGH A GRANT FROM THE U.S. DEPARTMENT OF TRANSPORTATION, FEDERAL TRANSIT ADMINISTRATION (FTA), UNDER THE FEDERAL TRANSIT ACT OF 1964, AS AMENDED, AND IN PART BY THE TAXES OF THE CITIZENS OF LOS ANGELES COUNTY AND OF THE STATE OF CALIFORNIA

REV	DATE	BY	APP	REG NO	EXPIRES	SEAL HOLDER	DESCRIPTION
1	4/29/16	PH	RP	C34273	11/30/17	[Signature]	NDC 086
2	2/12/16	E.S.	E.S.	C25553	03/31/17	E. SANCHEZ	NDC 085
3	10/21/15	E.S.	E.S.	C25553	03/31/17	E. SANCHEZ	NDC 085
4	5/21/15	E.S.	E.S.	C25553	03/31/17	E. SANCHEZ	AFC SUBMITTAL

DESIGNED BY: E. SANCHEZ
 DRAWN BY: R. RESURRECCION
 CHECKED BY: S. SOGHOMONIAN
 IN CHARGE: E. SANCHEZ
 DATE: 5/21/15

A SIGNED & SEALED ORIGINAL OF REV 0 OF THIS DRAWING IS MAINTAINED BY WSCC

Metro LOS ANGELES COUNTY METROPOLITAN TRANSPORTATION AUTHORITY

WALSH-SHEA CORRIDOR CONSTRUCTORS

1777 Oakland Blvd, Walnut Creek, CA 94596

HNTB REGISTERED PROFESSIONAL ARCHITECT CERTIFIES REVISION 3 ONLY

IRM

CRENSHAW/LAX TRANSIT CORRIDOR PROJECT FLORENCE / WEST STATION PLATFORM LEVEL PLAN

CONTRACT NO	C0988
DRAWING NO	A-4111
SCALE	1/8" = 1'-0"
SHEET NO	3



M Metro

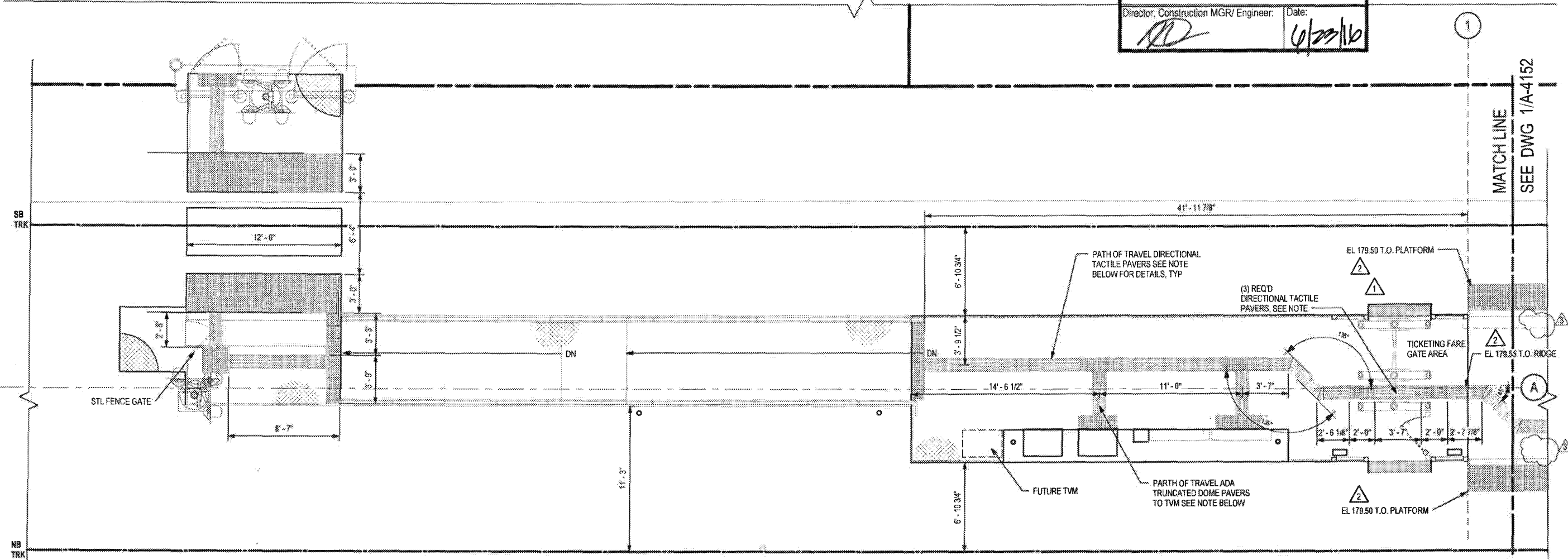
APPROVED

APPROVED AS NOTED
(no resubmittal required)

REJECTED, REVISE & RESUBMIT

FOR RECORD ONLY

Director, Construction MGR/ Engineer: *[Signature]* Date: *6/23/16*



LEGEND

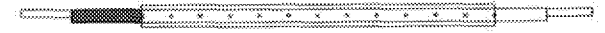
- SEALED CONCRETE
- 1' X 1' TRUNCATED DOME PATTERN ADA TACTILE. REFER TO SHT AS-038 & AS-039 FOR DETAILS
- 1' X 1' DIRECTIONAL BAR PATTERN ADA TACTILE. REFER TO SHT AS-038 & AS-039 FOR DETAILS

NOTE

COLOR ARCHITECTURAL TOPPING SLAB PATTERN NOT RELEASED FOR CONSTRUCTION, TO BE APPROVED BY METRO THROUGH NDC.



PARTIAL PAVING PLAN
1/4" = 1'-0"



0' 2' 4' 8'
KEYPLAN

PACKAGE B-1.4

THE PREPARATION OF THIS DRAWING HAS BEEN FINANCED IN PART THROUGH A GRANT FROM THE U.S. DEPARTMENT OF TRANSPORTATION, FEDERAL TRANSIT ADMINISTRATION (FTA), UNDER THE FEDERAL TRANSIT ACT OF 1964, AS AMENDED, AND IN PART BY THE TAXES OF THE CITIZENS OF LOS ANGELES COUNTY AND OF THE STATE OF CALIFORNIA.

REV	DATE	BY	APP	REG NO	EXPIRES	SEAL HOLDER	DESCRIPTION
	4/29/16	PH	RF	C34273	11/30/17	<i>[Signature]</i>	NDC 086
	2/12/16	E.S.	E.S.	C25553	03/31/17	E. SANCHEZ	NDC 085
	10/21/15	E.S.	E.S.	C25553	03/31/17	E. SANCHEZ	NDC 065
0	5/21/15			C25553	03/31/17	E. SANCHEZ	AFC SUBMITTAL

DESIGNED BY
E. SANCHEZ
DRAWN BY
R. RESURRECCION
CHECKED BY
S. SOGHOMONIAN
IN CHARGE
E. SANCHEZ
DATE
5/21/15

A SIGNED & SEALED ORIGINAL OF REV 0 OF THIS DRAWING IS MAINTAINED BY WSCC

M Metro LOS ANGELES COUNTY METROPOLITAN TRANSPORTATION AUTHORITY

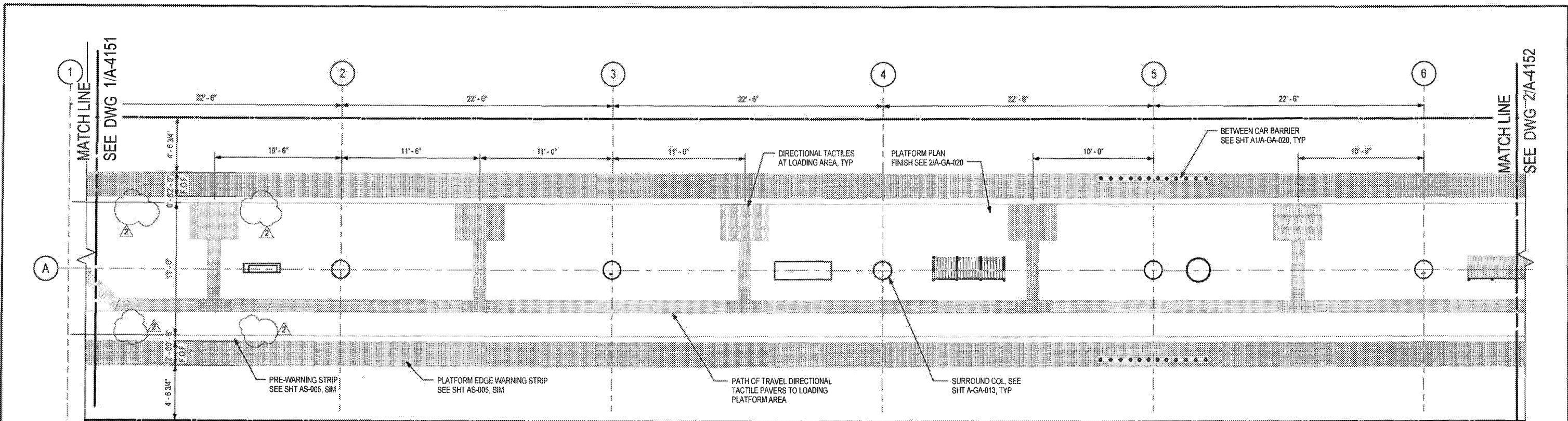
WALSH-SHEA CORRIDOR CONSTRUCTORS
1777 Oakland Blvd
Walnut Creek, CA 94596

HNTB
STEVE WHITAKER
4/26/2015

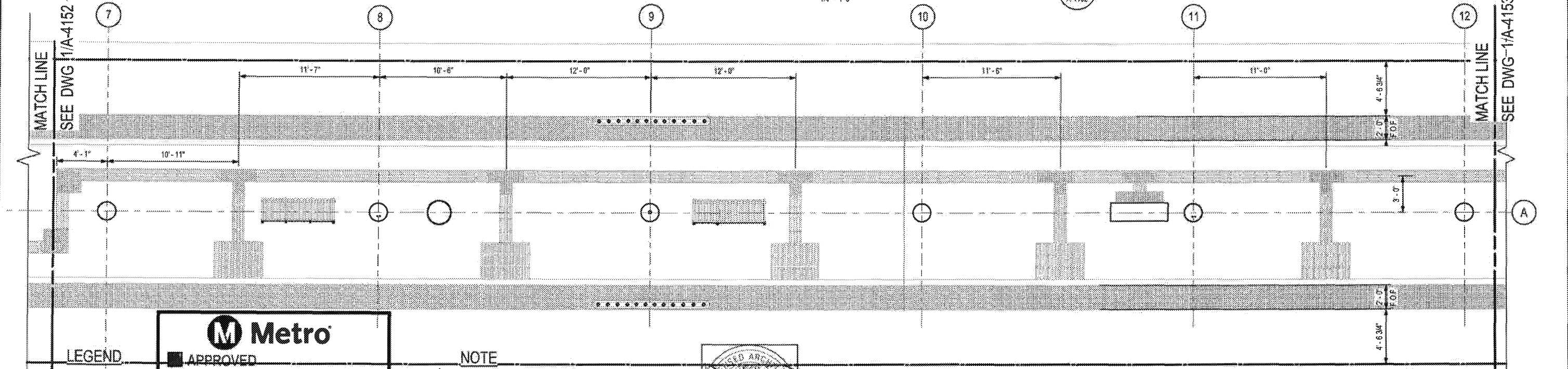
IRM
EFRAN SANCHEZ
SUBMITTED

CRENSHAW/LAX TRANSIT CORRIDOR PROJECT
FLORENCE / WEST STATION
PARTIAL PAVING PLAN 1 OF 3

CONTRACT NO. C0988	REV 3
DRAWING NO. A-4151	
SCALE 1/4" = 1'-0"	
SHEET NOS.	



PARTIAL PAVING PLAN
1
1/4" = 1'-0"
A-4152



PARTIAL PAVING PLAN
2
1/4" = 1'-0"
A-4152

LEGEND

- SEALED CONCRETE
- 1' X 1' TRUNCATED CONCRETE PATTERNS (NO SUBMITTAL REQUIRED) SEE SHT AS-039 FOR DETAILS
- 1' X 1' DIRECTIONAL TACTILE PAVERS (NO SUBMITTAL REQUIRED) SEE SHT AS-005 FOR DETAILS

Metro

APPROVED

APPROVED AS NOTED (NO SUBMITTAL REQUIRED)

REJECTED, REVISE & RESUBMIT

FOR RECORD ONLY

Director, Construction MGMT Engineer Date: *[Signature]* *[Date]*

NOTE

COLOR ARCHITECTURAL TOPPING SLAB PATTERN NOT RELEASED FOR CONSTRUCTION, TO BE APPROVED BY METRO THROUGH NDC.



THE PREPARATION OF THIS DRAWING HAS BEEN FINANCED IN PART THROUGH A GRANT FROM THE U.S. DEPARTMENT OF TRANSPORTATION, FEDERAL TRANSIT ADMINISTRATION (FTA), UNDER THE FEDERAL TRANSIT ACT OF 1954, AS AMENDED, AND IN PART BY THE TAXES OF THE CITIZENS OF LOS ANGELES COUNTY AND OF THE STATE OF CALIFORNIA

REV	DATE	BY	APP	REG NO	EXPIRES	SEAL HOLDER	DESCRIPTION
0	4/29/15	AA	RF	C34273	11/30/17		NDC 066
	10/21/15			C25553	03/31/17	E. SANCHEZ	NDC 065
	5/21/15			C25553	03/31/17	E. SANCHEZ	AFC SUBMITTAL

A SIGNED & SEALED ORIGINAL OF REV 0 OF THIS DRAWING IS MAINTAINED BY WSSC

Metro LOS ANGELES COUNTY METROPOLITAN TRANSPORTATION AUTHORITY

WALSH-SHEA CORRIDOR CONSTRUCTORS 1777 Oakland Blvd. Walnut Creek, CA 94596

HNTB STEVE WHITAKER APPROVED

WSP EFRAN SANCHEZ SUBMITTED

CRENSHAW/LAX TRANSIT CORRIDOR PROJECT
FLORENCE / WEST STATION
PARTIAL PAVING PLAN 2 OF 3

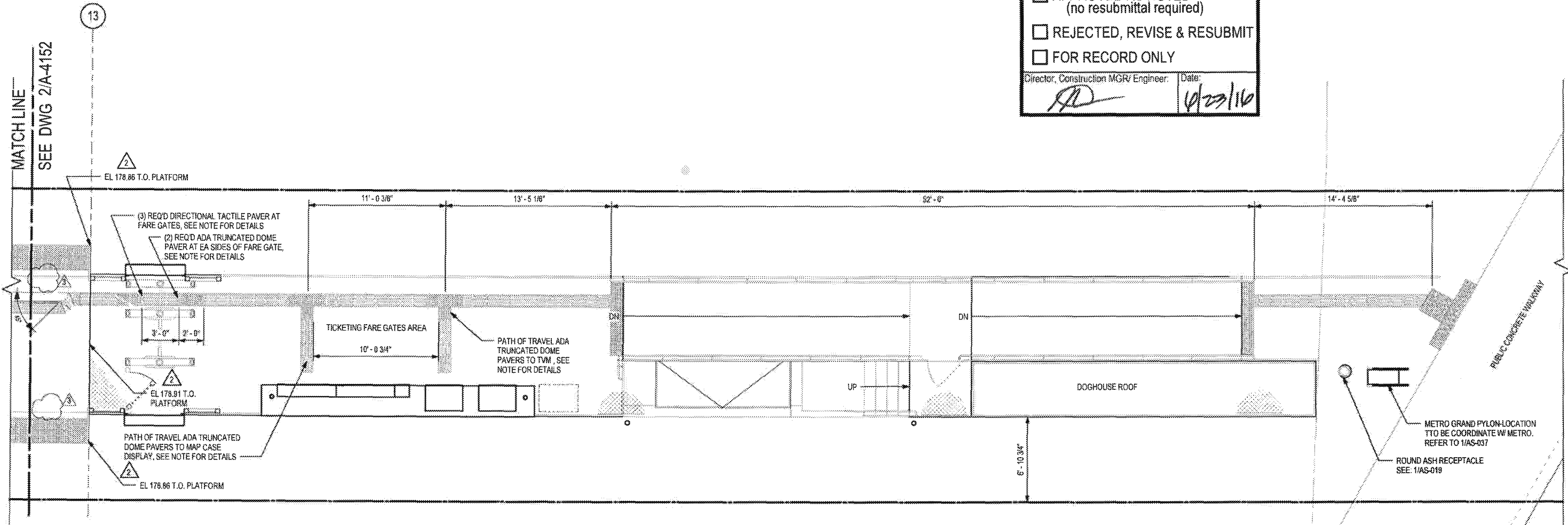
CONTRACT NO.	C0988
DRAWING NO.	A-4152
SCALE	1/4" = 1'-0"
SHEET NO.	2



M Metro

- APPROVED
- APPROVED AS NOTED (no resubmittal required)
- REJECTED, REVISE & RESUBMIT
- FOR RECORD ONLY

Director, Construction MGR/ Engineer: *AS* Date: *4/23/16*

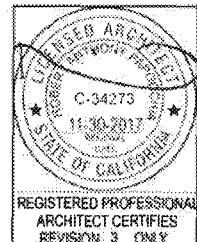


LEGEND

- SEALED CONCRETE
- 1' X 1' TRUNCATED DOME PATTERN ADA TACTILE. REFER TO SHT AS-038 & AS-039 FOR DETAILS
- 1' X 1' DIRECTIONAL BAR PATTERN ADA TACTILE. REFER TO SHT AS-038 & AS-039 FOR DETAILS

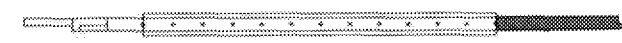


NOTE
 COLOR ARCHITECTURAL TOPPING SLAB PATTERN NOT RELEASED FOR CONSTRUCTION, TO BE APPROVED BY METRO THROUGH NDC.



PARTIAL PAVING PLAN

1/4" = 1'-0"



KEYPLAN

PACKAGE B-1.4

THE PREPARATION OF THIS DRAWING HAS BEEN FINANCED IN PART THROUGH A GRANT FROM THE U.S. DEPARTMENT OF TRANSPORTATION, FEDERAL TRANSIT ADMINISTRATION (FTA), UNDER THE FEDERAL TRANSIT ACT OF 1964, AS AMENDED, AND IN PART BY THE TAXES OF THE CITIZENS OF LOS ANGELES COUNTY AND OF THE STATE OF CALIFORNIA

REV	DATE	BY	APP	REG NO	EXPIRES	SEAL HOLDER	DESCRIPTION
1	4/29/16	AS	RP	C34273	11/30/17		NDC 086
2	2/12/16	E.S.	E.S.	C25553	03/31/17	E. SANCHEZ	NDC 085
3	10/21/15	E.S.	E.S.	C25553	03/31/17	E. SANCHEZ	NDC 065
4	5/21/15			C25553	03/31/17	E. SANCHEZ	AFC SUBMITTAL

DESIGNED BY
E. SANCHEZ
 DRAWN BY
R. RESURRECCION
 CHECKED BY
S. SOGHOMONIAN
 IN CHARGE
E. SANCHEZ
 DATE
5/21/15

A SIGNED & SEALED ORIGINAL OF REV 0 OF THIS DRAWING IS MAINTAINED BY WSCC

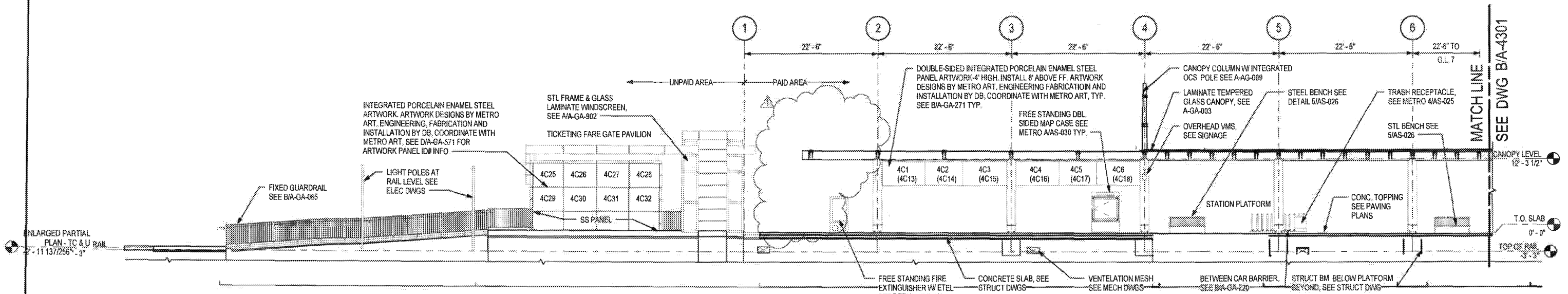
M LOS ANGELES COUNTY METROPOLITAN TRANSPORTATION AUTHORITY
Metro
 WALSH-SHEA CORRIDOR CONSTRUCTORS
 1777 Oakland Blvd.
 Walnut Creek, CA 94596

HNTB
 STEVE WHITAKER
 APPROVED

TRM
 EFRAIN SANCHEZ
 SUBMITTED

CRENSHAW/LAX TRANSIT CORRIDOR PROJECT
 FLORENCE / WEST STATION
 PARTIAL PAVING PLAN 3 OF 3

CONTRACT NO C0988	REV 3
DRAWING NO A-4153	SCALE 1/4" = 1'-0"
SHEET NO	



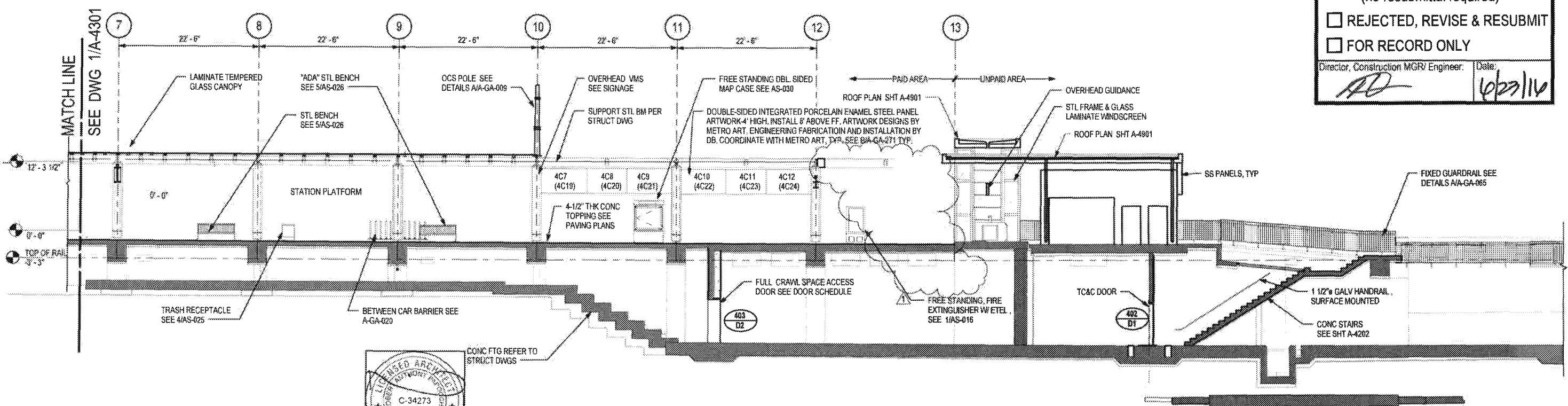
PARTIAL LONGITUDINAL ELEVATION
1/8" = 1'-0"

NOTE:
1. NUMBERS IN PARENTHESIS DENOTE ART PANELS ON OPPOSITE SIDE

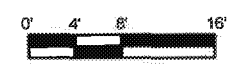
M Metro

- APPROVED
- APPROVED AS NOTED (no resubmittal required)
- REJECTED, REVISE & RESUBMIT
- FOR RECORD ONLY

Director, Construction MGR/ Engineer: *AD* Date: *6/23/16*



LONGITUDINAL SECTION
1/8" = 1'-0"



THE PREPARATION OF THIS DRAWING HAS BEEN FINANCED IN PART THROUGH A GRANT FROM THE U.S. DEPARTMENT OF TRANSPORTATION, FEDERAL TRANSIT ADMINISTRATION (FTA), UNDER THE FEDERAL TRANSIT ACT OF 1964, AS AMENDED, AND IN PART BY THE TAXES OF THE CITIZENS OF LOS ANGELES COUNTY AND OF THE STATE OF CALIFORNIA.									
REV	DATE	BY	APP	REG NO	EXPIRES	SEAL NUMBER	DESCRIPTION		
0	5/21/15	AS	RP	C34273	11/30/17		NDC 086		
				C25553	03/31/17	E. SANCHEZ	AFC SUBMITTAL		

DESIGNED BY
E. SANCHEZ

DRAWN BY
R. RESURRECCION

CHECKED BY
S. SOGHOMONIAN

IN CHARGE
E. SANCHEZ

DATE
5/21/15

M LOS ANGELES COUNTY METROPOLITAN TRANSPORTATION AUTHORITY

Metro

WALSH-SHEA CORRIDOR CONSTRUCTORS

1777 Oakland Blvd.
Walnut Creek, CA 94596

HNTB

STEVE WHITAKER
APPROVER

TRM

EFRAIN SANCHEZ
SUBMITTER

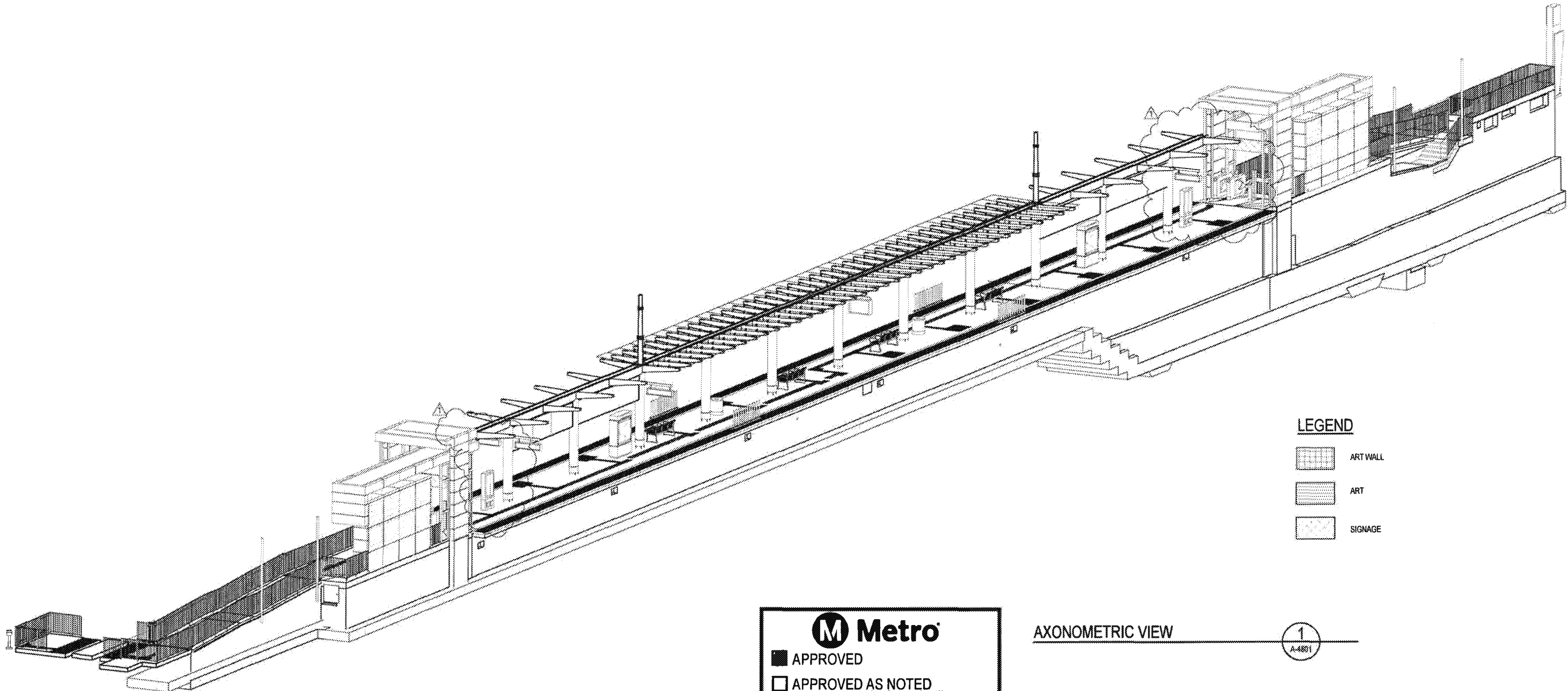
CRENSHAW/LAX

TRANSIT CORRIDOR PROJECT




FLORENCE / WEST STATION

LONGITUDINAL SECTION / ELEVATION

CONTRACT NO	C0988	
DRAWING NO	A-4301	
SCALE	1/8" = 1'-0"	
SHEET NO	1	



LEGEND

-  ART WALL
-  ART
-  SIGNAGE

AXONOMETRIC VIEW

1
A-4801

PACKAGE B-1.4


M Metro

APPROVED

APPROVED AS NOTED
(no resubmittal required)

REJECTED, REVISE & RESUBMIT

FOR RECORD ONLY

Director, Construction MGR/ Engineer:  Date: 4/23/16



REGISTERED PROFESSIONAL ARCHITECT CERTIFIES REVISION 1 ONLY

A SIGNED & SEALED ORIGINAL OF REV 0 OF THIS DRAWING IS MAINTAINED BY WSCC

THE PREPARATION OF THIS DRAWING HAS BEEN FINANCED IN PART THROUGH A GRANT FROM THE U.S. DEPARTMENT OF TRANSPORTATION, FEDERAL TRANSIT ADMINISTRATION (FTA), UNDER THE FEDERAL TRANSIT ACT OF 1954, AS AMENDED, AND IN PART BY THE TAXES OF THE COUNTY AND OF THE STATE OF CALIFORNIA

REV	DATE	BY	APP	REG NO	EXPIRES	SEAL HOLDER	DESCRIPTION
0	5/21/15	AS	RP	C25553	03/31/17	E. SANCHEZ	AFC SUBMITTAL

DESIGNED BY
E. SANCHEZ

DRAWN BY
R. RESURRECCION

CHECKED BY
S. SOGHOMONIAN

IN CHARGE
E. SANCHEZ

DATE
5/21/15

M Metro LOS ANGELES COUNTY METROPOLITAN TRANSPORTATION AUTHORITY

1777 Oakland Blvd.
Walnut Creek, CA 94596

HNTB STEVE WHITAKER APPROVED

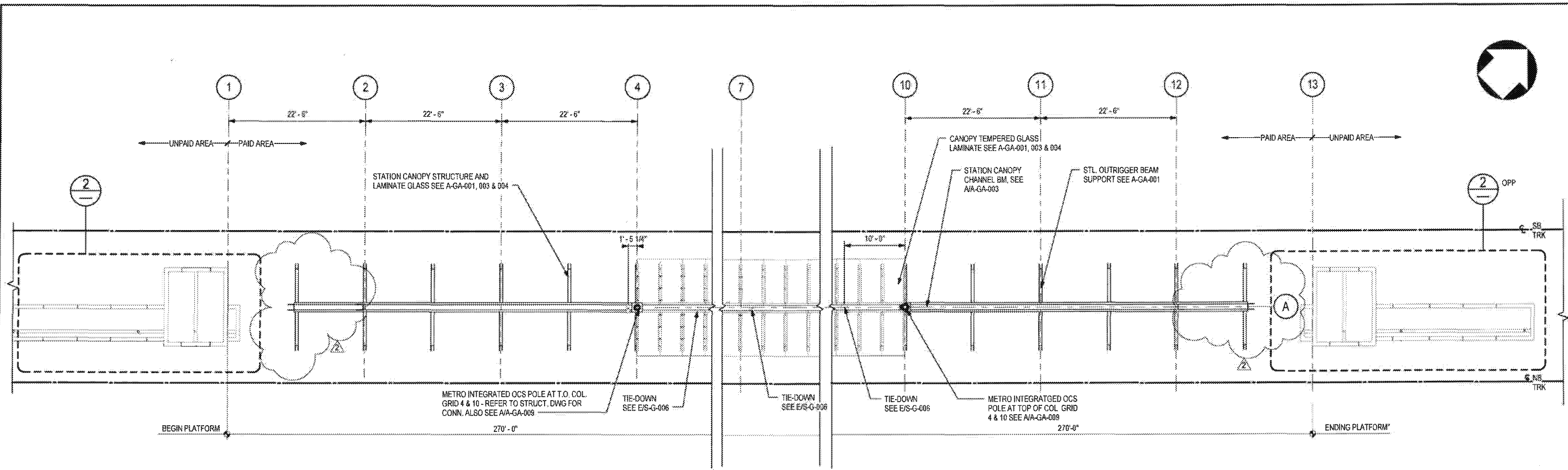
IRM EFRAIN SANCHEZ SUBMITTED

CRENSHAW/LAX TRANSIT CORRIDOR PROJECT

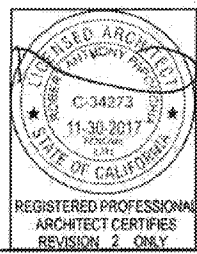
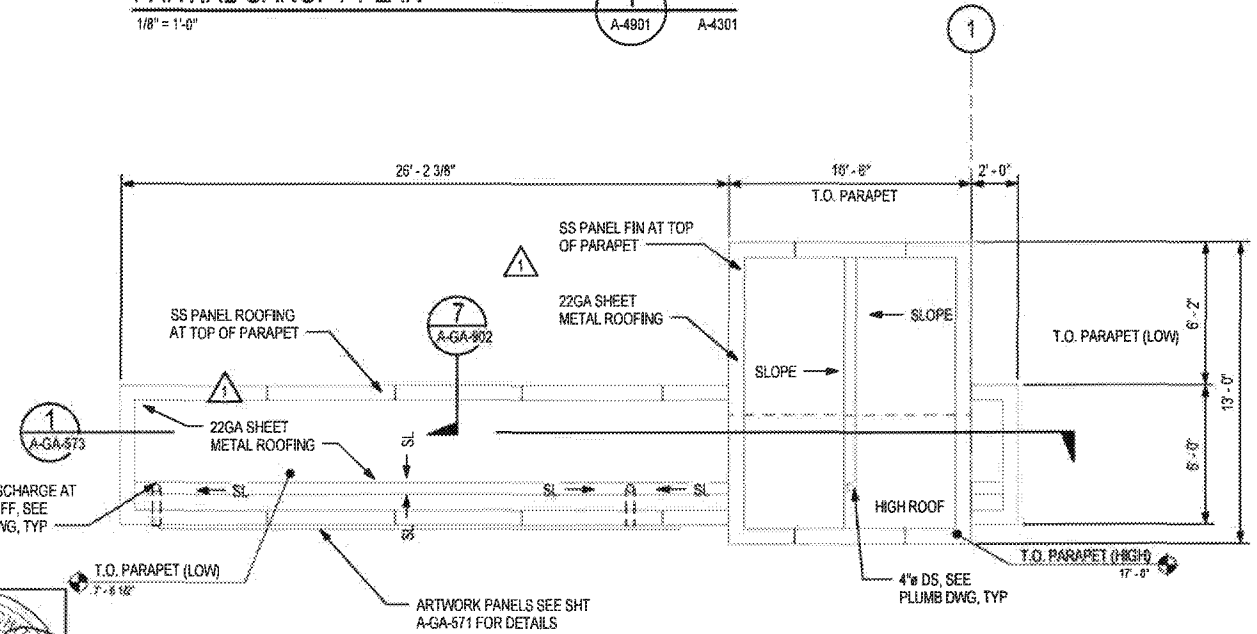
FLORENCE / WEST STATION

AXONOMETRIC VIEW - PLATFORM LEVEL

CONTRACT NO. C0988	
DRAWING NO. A-4801	REV 1
SCALE NO SCALE	
SHEET NO.	



PARTIAL CANOPY PLAN
 1/8" = 1'-0"
 A-4901 A-4301



ROOF PLAN-CANOPY TICKET PAVILION
 1/4" = 1'-0"
 A-4901 A-4301

Metro

APPROVED
 APPROVED AS NOTED (no resubmittal required)
 REJECTED, REVISE & RESUBMIT
 FOR RECORD ONLY

Director, Construction MGR/Engineer: *[Signature]* Date: 6/23/16

PACKAGE B-1.4

THE PREPARATION OF THIS DRAWING HAS BEEN FINANCED IN PART THROUGH A GRANT FROM THE U.S. DEPARTMENT OF TRANSPORTATION, FEDERAL TRANSIT ADMINISTRATION (FTA), UNDER THE FEDERAL TRANSIT ACT OF 1964, AS AMENDED, AND IN PART BY THE TAXES OF THE CITIZENS OF LOS ANGELES COUNTY AND OF THE STATE OF CALIFORNIA.

REV	DATE	BY	APP	REG NO	EXPIRES	SEAL HOLDER	DESCRIPTION
1	4/29/16	AS	RF	C-34273	11/30/17	[Signature]	NDC 086
2	10/21/15	E.S.	E.S.	C-25553	03/31/17	E. SANCHEZ	NDC 065
3	5/21/15	E.S.	E.S.	C-25553	03/31/17	E. SANCHEZ	AFC SUBMITTAL

DESIGNED BY
E. SANCHEZ
 DRAWN BY
R. RESURRECCION
 CHECKED BY
S. SOGHOMONIAN
 IN CHARGE
E. SANCHEZ
 DATE
5/21/15

A SIGNED & SEALED ORIGINAL OF REV 0 OF THIS DRAWING IS MAINTAINED BY WSCC

Metro LOS ANGELES COUNTY METROPOLITAN TRANSPORTATION AUTHORITY

WALSH-SHEA CORRIDOR CONSTRUCTORS
 1777 Oakland Blvd.
 Walnut Creek, CA 94598

HNTB
 STEVE WHITAKER APPROVED

FRAN SANCHEZ
 SUBMITTED

KEYPLAN

CRENSHAW/LAX TRANSIT CORRIDOR PROJECT
FLORENCE / WEST STATION
PARTIAL PLATFORM CANOPY/TICKET PAVILION ROOF PLAN

CONTRACT NO	C0988
DRAWING NO	A-4901
SCALE	AS NOTED
SHEET NO	2