



### CONSTRUCTION NOTES

- 1 - CONSTRUCT CURB "TYPE A1" PER SPPWC STD PLAN 120-2, "CF" PER PLAN
- 2 - CONSTRUCT CURB AND GUTTER "TYPE A2" PER SPPWC STD PLAN 120-2, "CF" PER PLAN
- 3 - CONSTRUCT 4" THICK PCC SIDEWALK OVER 4" CMB, JOINTS PER SPPWC STD. PLAN 112-2
- 4 - CONSTRUCT CURB AND GUTTER - MOUNTABLE PER SPPWC STD 121-2, "CF" PER PLAN
- 5 - NOT USED
- 6 - BOLLARD PER METRO BRT DESIGN CRITERIA FIG. 3-5
- 7 - INSTALL 4" WHITE STRIPE (TYP)
- 8 - INSTALL PCC CONCRETE PAVEMENT, THICKNESS SHOWN ON PLAN
- 9 - INSTALL CRUSHED MISCELLANEOUS BASE (CMB) OVER COMPACTED NATIVE, THICKNESS SHOWN ON PLAN

### LEGEND :

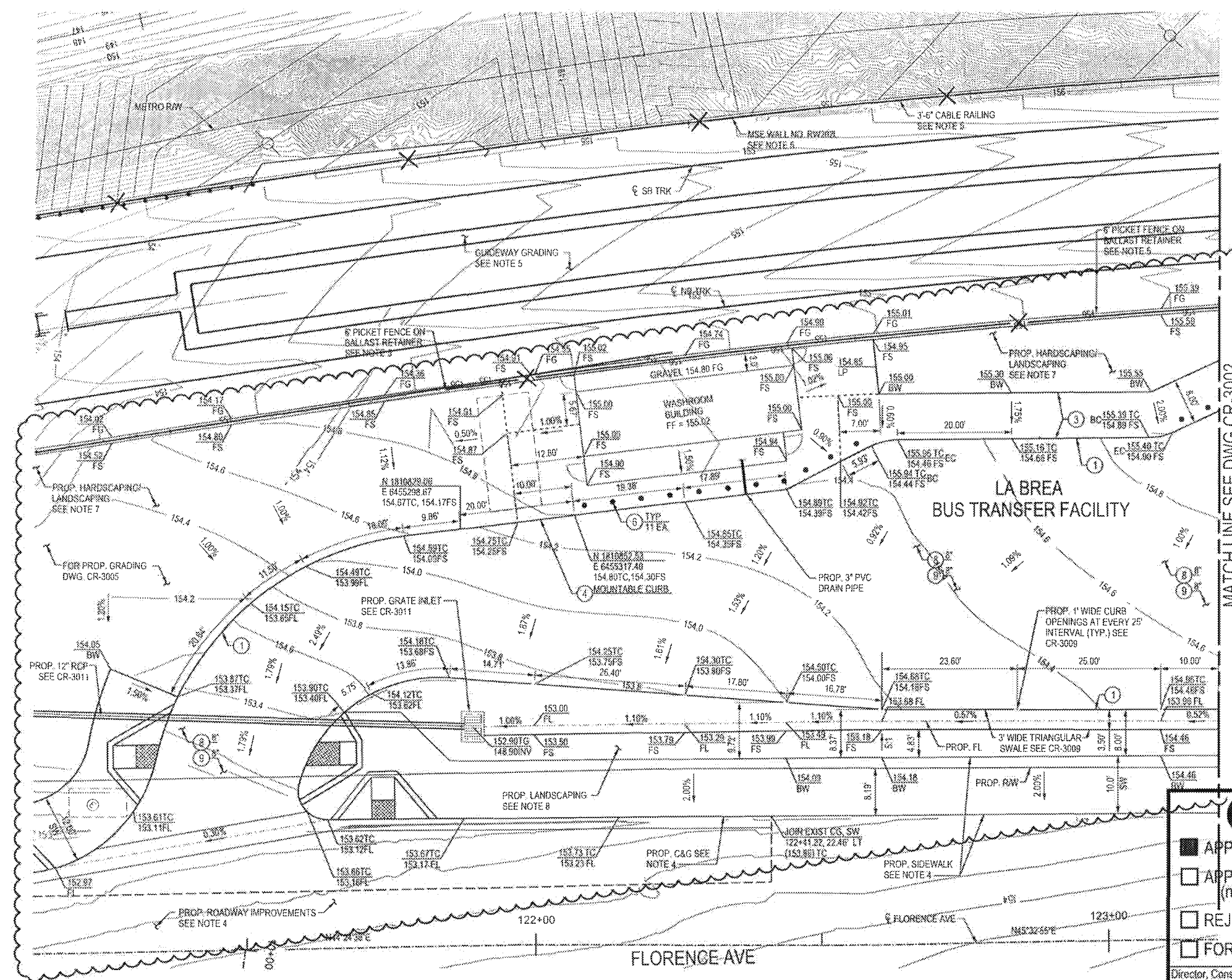
- 155 — \* PROPOSED CONTOURS (0.2' INTERVAL)
- - - - - \* GRADING TRANSITION LINE

### GENERAL NOTES:

1. ALL WORK PERTAINING TO CURB, CURB AND GUTTER, SIDEWALK, AND PAVEMENT SHALL CONFORM TO THE LATEST EDITION AND SUPPLEMENTS OF THE STANDARDS AND SPECIFICATIONS FOR PUBLIC WORKS CONSTRUCTION (SPPWC, GREEN BOOK).
2. SIGNING AND STRIPING SHALL CONFORM TO 2010 CALTRANS STANDARD PLANS AND SPECIFICATIONS, THE CALIFORNIA MANUAL ON UNIFORM TRAFFIC CONTROL DEVICES (CA MUTCD 2012), THESE PLANS AND THE SPECIAL PROVISIONS.

### NOTES:

1. SEE ARCHITECTURAL (A) PLANS FOR PROPOSED STATION IMPROVEMENTS.
2. EG ELEVATIONS REFER TO EXISTING GROUND ELEVATIONS.
3. SEE B-1.5- SIGNING AND STRIPING (GEO) PLANS FOR PROPOSED STRIPING IMPROVEMENTS.
4. SEE B-1.5- STREET MODIFICATION (CS) PLANS FOR PROPOSED ROADWAY IMPROVEMENTS.
5. SEE CIVIL GUIDEWAY (CG) PLANS FOR IMPROVEMENTS WITHIN PROPOSED GUIDEWAY.
6. FINISH GRADE (FG) ELEVATIONS REFER TO THE SURFACE ELEVATIONS WITHIN PROPOSED GUIDEWAY.
7. SEE PACKAGE PW 23 - STATIONS LANDSCAPING FOR SURFACE TREATMENT WITHIN THE PLAZA AREA.
8. SEE LANDSCAPE (L) PLANS FOR PROPOSED LANDSCAPING IMPROVEMENTS.
9. SEE SIGN DETAIL (ZA) PLANS FOR PAVEMENT MARKING AND SIGNS PERTAINING TO PARKING REGULATION



MATCHLINE SEE DWG CR-3002

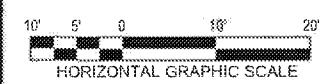
**APPROVED**

APPROVED AS NOTED  
(no resubmittal required)

REJECTED, REVISE & RESUBMIT

FOR RECORD ONLY

Director, Construction MGR/Engineer: Date: 9/20/16



PACKAGE B-1.4

THE PREPARATION OF THIS DRAWING HAS BEEN FINANCED IN PART THROUGH A GRANT FROM THE U.S. DEPARTMENT OF TRANSPORTATION FEDERAL TRANSIT ADMINISTRATION (FTA) UNDER THE FEDERAL TRANSIT ACT OF 1964, AS AMENDED, AND IN PART BY THE TAXES OF THE CITIZENS OF LOS ANGELES COUNTY AND OF THE STATE OF CALIFORNIA.

REV	DATE	BY	APP	REG NO	EXPIRES	SEAL HOLDER	DESCRIPTION
0	5/21/15	DP		65608	09/30/17	NOAH BUSCH	NDC 130
				65608	09/30/15	NOAH BUSCH	AFC SUBMITTAL

DESIGNED BY  
**ERIC NHAN**

DRAWN BY  
**DAVID PARDEZ**

CHECKED BY  
**RAVI PUDIPEDDI**

IN CHARGE  
**NOAH BUSCH**

DATE  
5/21/15

A SIGNED & SEALED ORIGINAL OF REV 0 OF THIS DRAWING IS MAINTAINED BY WSCC

LOS ANGELES COUNTY METROPOLITAN TRANSPORTATION AUTHORITY

**WALSH-SHEA CORRIDOR CONSTRUCTORS**

1777 Oakland Blvd.  
Walnut Creek, CA 94596

STEVE WHITAKER

NOAH BUSCH

**CRENSHAW/LAX**  
TRANSIT CORRIDOR PROJECT  
FLORENCE / LA BREA STATION  
BUS TRANSFER FACILITY GRADING  
SHEET 1 OF 3

CONTRACT NO. <b>C0988</b>	REV <b>1</b>
DRAWING NO. <b>CR-3001</b>	
SCALE <b>1" = 10'</b>	
SHEET NO.	



### CONSTRUCTION NOTES

- 1- CONSTRUCT CURB "TYPE A1" PER SPPWC STD PLAN 120-2, "CF" PER PLAN
- 2- CONSTRUCT CURB AND GUTTER "TYPE A2" PER SPPWC STD PLAN 120-2, "CF" PER PLAN
- 3- CONSTRUCT 4" THICK PCC SIDEWALK OVER 4" CMB, JOINTS PER SPPWC STD. PLAN 112-2
- 4- CONSTRUCT CURB AND GUTTER - MOUNTABLE PER SPPWC STD 121-2, "CF" PER PLAN
- 5- NOT USED
- 6- BOLLARD PER METRO BRT DESIGN CRITERIA FIG. 3-5
- 7- INSTALL 4" WHITE STRIPE (TYP)
- 8- INSTALL PCC CONCRETE PAVEMENT, THICKNESS SHOWN ON PLAN
- 9- INSTALL CRUSHED MISCELLANEOUS BASE (CMB) OVER COMPACTED NATIVE, THICKNESS SHOWN ON PLAN

### LEGEND:

— 155 — = PROPOSED CONTOURS  
(0.2' INTERVAL)

### GENERAL NOTES:

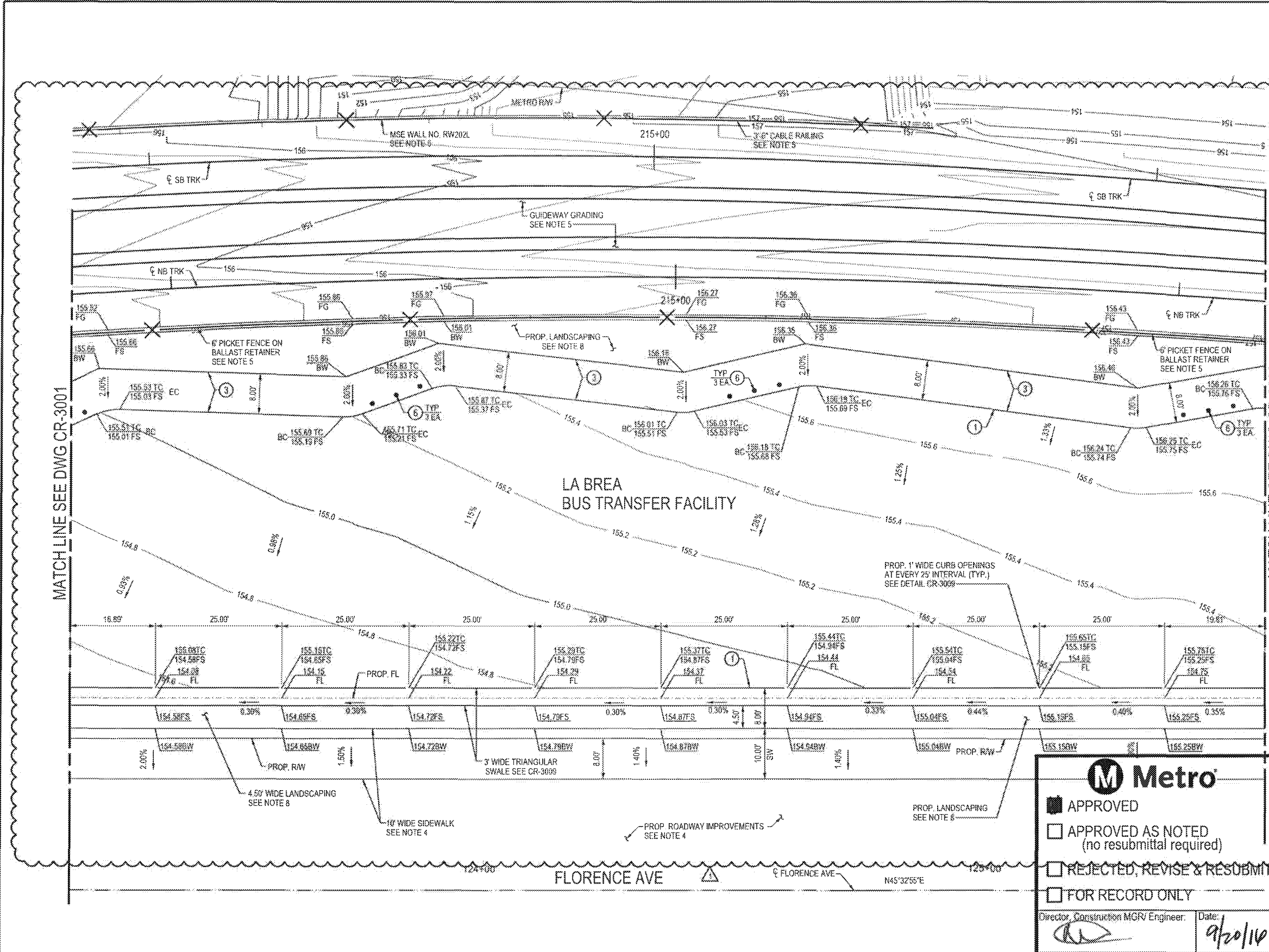
1. ALL WORK PERTAINING TO CURB, CURB AND GUTTER, SIDEWALK, AND PAVEMENT SHALL CONFORM TO THE LATEST EDITION AND SUPPLEMENTS OF THE STANDARDS AND SPECIFICATIONS FOR PUBLIC WORKS CONSTRUCTION (SPPWC, GREEN BOOK).
2. SIGNING AND STRIPING SHALL CONFORM TO 2010 CALTRANS STANDARD PLANS AND SPECIFICATIONS, THE CALIFORNIA MANUAL ON UNIFORM TRAFFIC CONTROL DEVICES (CA MUTCD 2012), THESE PLANS AND THE SPECIAL PROVISIONS.

### NOTES:

1. SEE ARCHITECTURAL (A) PLANS FOR PROPOSED STATION IMPROVEMENTS.
2. EG ELEVATIONS REFER TO EXISTING GROUND ELEVATIONS.
3. SEE B-1-5- SIGNING AND STRIPING (GEO) PLANS FOR PROPOSED STRIPING IMPROVEMENTS.
4. SEE B-1-5- STREET MODIFICATION (CS) PLANS FOR PROPOSED ROADWAY IMPROVEMENTS.
5. SEE CIVIL GUIDEWAY (CG) PLANS FOR IMPROVEMENTS WITHIN PROPOSED GUIDEWAY.
6. FINISH GRADE (FG) ELEVATIONS REFER TO THE SURFACE ELEVATIONS WITHIN PROPOSED GUIDEWAY.
7. SEE PACKAGE PW 23 - STATIONS LANDSCAPING FOR SURFACE TREATMENT WITHIN THE PLAZA AREA
8. SEE LANDSCAPE (L) PLANS FOR PROPOSED LANDSCAPING IMPROVEMENTS.
9. SEE SIGN DETAIL (ZA) PLANS FOR PAVEMENT MARKING AND SIGNS PERTAINING TO PARKING REGULATION

MATCH LINE SEE DWG CR-3001

MATCH LINE SEE DWG CR-3003



**M Metro**

APPROVED

APPROVED AS NOTED  
(no resubmittal required)

REJECTED, REVISE & RESUBMIT

FOR RECORD ONLY

Director, Construction MGR/Engineer: \_\_\_\_\_ Date: 9/20/14



PACKAGE B-1.4

THE PREPARATION OF THIS DRAWING HAS BEEN FINANCED IN PART THROUGH A GRANT FROM THE U.S. DEPARTMENT OF TRANSPORTATION, FEDERAL TRANSIT ADMINISTRATION (FTA), UNDER THE FEDERAL TRANSIT ACT OF 1964, AS AMENDED, AND IN PART BY THE TAXES OF THE CITIZENS OF LOS ANGELES COUNTY AND OF THE STATE OF CALIFORNIA.

REV	DATE	BY	APP	REG NO	EXPIRES	SEAL HOLDER	DESCRIPTION
0	5/21/15			65608	09/30/15	NOAH BUSCH	AFC SUBMITTAL
	7/15/16	DP		65608	09/30/17		NDC 136

DESIGNED BY  
ERIC NHAN

DRAWN BY  
DAVID PARDEZ

CHECKED BY  
RAVI PUDIPEDDI

NOAH BUSCH  
DATE  
5/21/15

A SIGNED & SEALED ORIGINAL OF REV 0 OF THIS DRAWING IS MAINTAINED BY WSCC

**M Metro**

LOS ANGELES COUNTY METROPOLITAN TRANSPORTATION AUTHORITY

WALSH-SHEA CORRIDOR CONSTRUCTORS

1777 Oakland Blvd.  
Walnut Creek, CA 94596

**HNTB**

STEVE WHITAKER  
APPROVED

**V&A INC.**

NOAH BUSCH  
SUBMITTED

CRENSHAW/LAX  
TRANSIT CORRIDOR PROJECT  
FLORENCE / LA BREA STATION  
BUS TRANSFER FACILITY GRADING  
SHEET 2 OF 3

CONTRACT NO.	C0988
DRAWING NO.	CR-3002
SCALE	1" = 10'
SHEET NO.	

**NOTES:**

1. SEE ARCHITECTURAL (A) PLANS FOR PROPOSED STATION IMPROVEMENTS.
2. EG ELEVATIONS REFER TO EXISTING GROUND ELEVATIONS.
3. SEE B-1.5- SIGNING AND STRIPING (GEO) PLANS FOR PROPOSED STRIPING IMPROVEMENTS.
4. SEE B-1.5- STREET MODIFICATION (CS) PLANS FOR PROPOSED ROADWAY IMPROVEMENTS.

5. SEE CIVIL GUIDEWAY (CG) PLANS FOR IMPROVEMENTS WITHIN PROPOSED GUIDEWAY.
6. FINISH GRADE (FG) ELEVATIONS REFER TO THE SURFACE ELEVATIONS WITHIN PROPOSED GUIDEWAY.
7. SEE PACKAGE PW 23 - STATIONS LANDSCAPING FOR SURFACE TREATMENT WITHIN THE PLAZA AREA.
8. SEE LANDSCAPE (L) PLANS FOR PROPOSED LANDSCAPING IMPROVEMENTS.
9. SEE SIGN DETAIL (ZA) PLANS FOR PAVEMENT MARKING AND SIGNS PERTAINING TO PARKING REGULATION

**CONSTRUCTION NOTES**

- 1 - CONSTRUCT CURB "TYPE A1" PER SPPWC STD PLAN 120-2, "CF" PER PLAN "CF" PER PLAN
- 2 - CONSTRUCT CURB AND GUTTER "TYPE A2" PER SPPWC STD PLAN 120-2, "CF" PER PLAN
- 3 - CONSTRUCT 4" THICK PCC SIDEWALK OVER 4" CMB, JOINTS PER SPPWC STD. PLAN 112-2
- 4 - CONSTRUCT CURB AND GUTTER - MOUNTABLE PER SPPWC STD 121-2, "CF" PER PLAN
- 5 - NOT USED
- 6 - BOLLARD PER METRO BRT DESIGN CRITERIA FIG. 3-5
- 7 - INSTALL 4" WHITE STRIPE (TYP)
- 8 - INSTALL PCC CONCRETE PAVEMENT, THICKNESS SHOWN ON PLAN
- 9 - INSTALL CRUSHED MISCELLANEOUS BASE (CMB) OVER COMPACTED NATIVE, THICKNESS SHOWN ON PLAN

**LEGEND:**

— 155 — = PROPOSED CONTOURS (0.2' INTERVAL)

**GENERAL NOTES:**

1. ALL WORK PERTAINING TO CURB, CURB AND GUTTER, SIDEWALK, AND PAVEMENT SHALL CONFORM TO THE LATEST EDITION AND SUPPLEMENTS OF THE STANDARDS AND SPECIFICATIONS FOR PUBLIC WORKS CONSTRUCTION (SPPWC, GREEN BOOK).
2. SIGNING AND STRIPING SHALL CONFORM TO 2010 CALTRANS STANDARD PLANS AND SPECIFICATIONS, THE CALIFORNIA MANUAL ON UNIFORM TRAFFIC CONTROL DEVICES (CA MUTCD 2012), THESE PLANS AND THE SPECIAL PROVISIONS.

**M Metro**

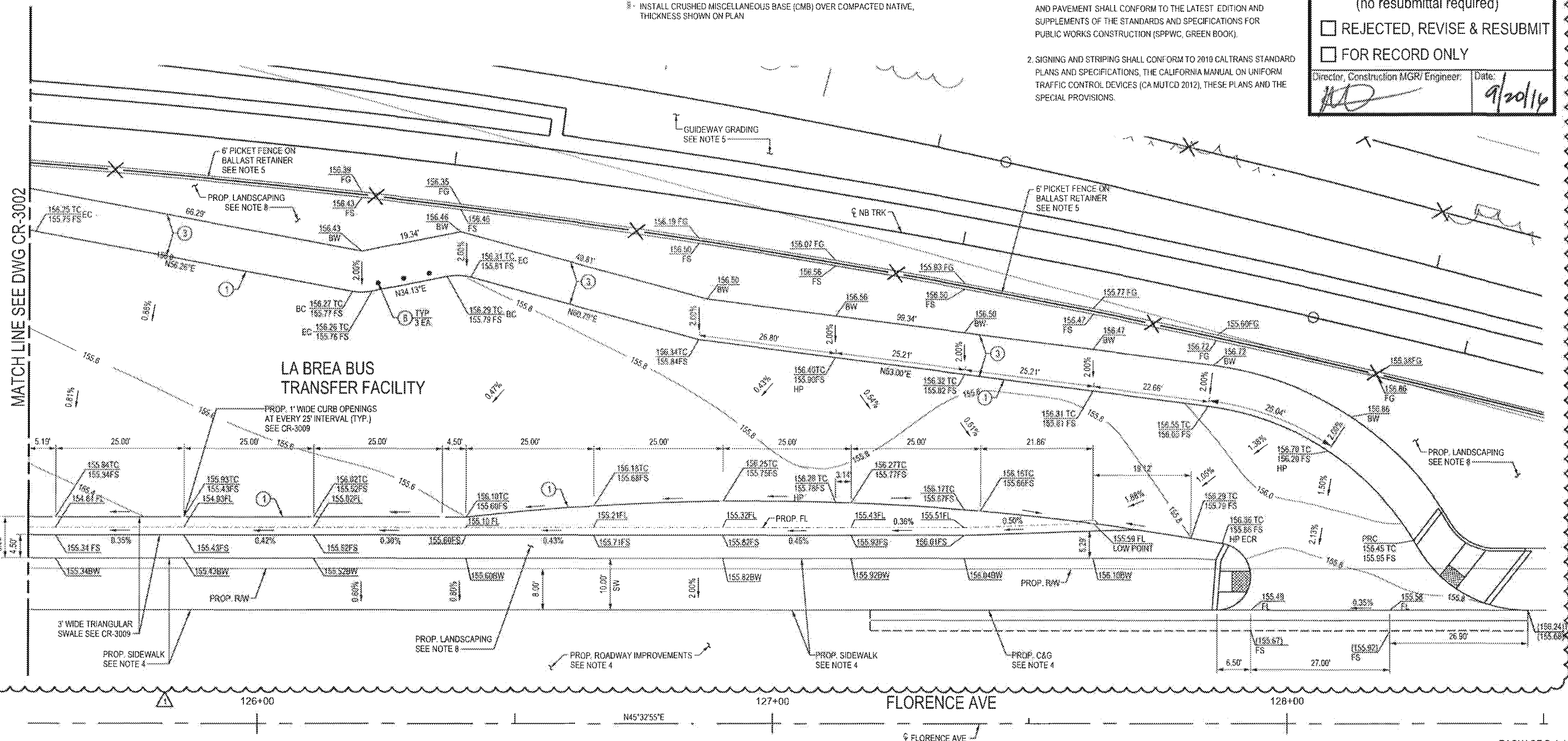
APPROVED

APPROVED AS NOTED (no resubmittal required)

REJECTED, REVISE & RESUBMIT

FOR RECORD ONLY

Director, Construction MGR/ Engineer: *[Signature]* Date: *9/20/14*



PACKAGE B-1.4

THE PREPARATION OF THIS DRAWING HAS BEEN FINANCED IN PART THROUGH A GRANT FROM THE U.S. DEPARTMENT OF TRANSPORTATION, FEDERAL TRANSIT ADMINISTRATION (FTA), UNDER THE FEDERAL TRANSIT ACT OF 1964, AS AMENDED, AND IN PART BY THE TAXES OF THE CITIZENS OF LOS ANGELES COUNTY AND OF THE STATE OF CALIFORNIA.

REV	DATE	BY	APP	REG NO	EXPIRES	SEAL HOLDER	DESCRIPTION
0	7/15/16	DP	[Signature]	65608	09/30/17	NDC 130	
0	5/21/15			65608	09/30/15	NOAH BUSCH	AFC SUBMITTAL

DESIGNED BY  
ERIC NHAN  
DRAWN BY  
DAVID PARDEZ  
CHECKED BY  
RAVI PUDIPEDDI  
REDESIGNED BY  
NOAH BUSCH  
DATE  
5/21/15

A SIGNED & SEALED ORIGINAL OF REV 0 OF THIS DRAWING IS MAINTAINED BY WSCC

**M Metro**

LOS ANGELES COUNTY METROPOLITAN TRANSPORTATION AUTHORITY

WALSH-SHEA CORRIDOR CONSTRUCTORS

1777 Oakland Blvd.  
Walnut Creek, CA 94596

**HNTB**

STEVE WHITAKER  
APPROVED

**V&A INC.**

3305 HOWITT ST. SUITE 121  
LOS ANGELES, CA 90013  
213 972 9700

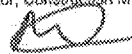
NOAH BUSCH  
SUBMITTED

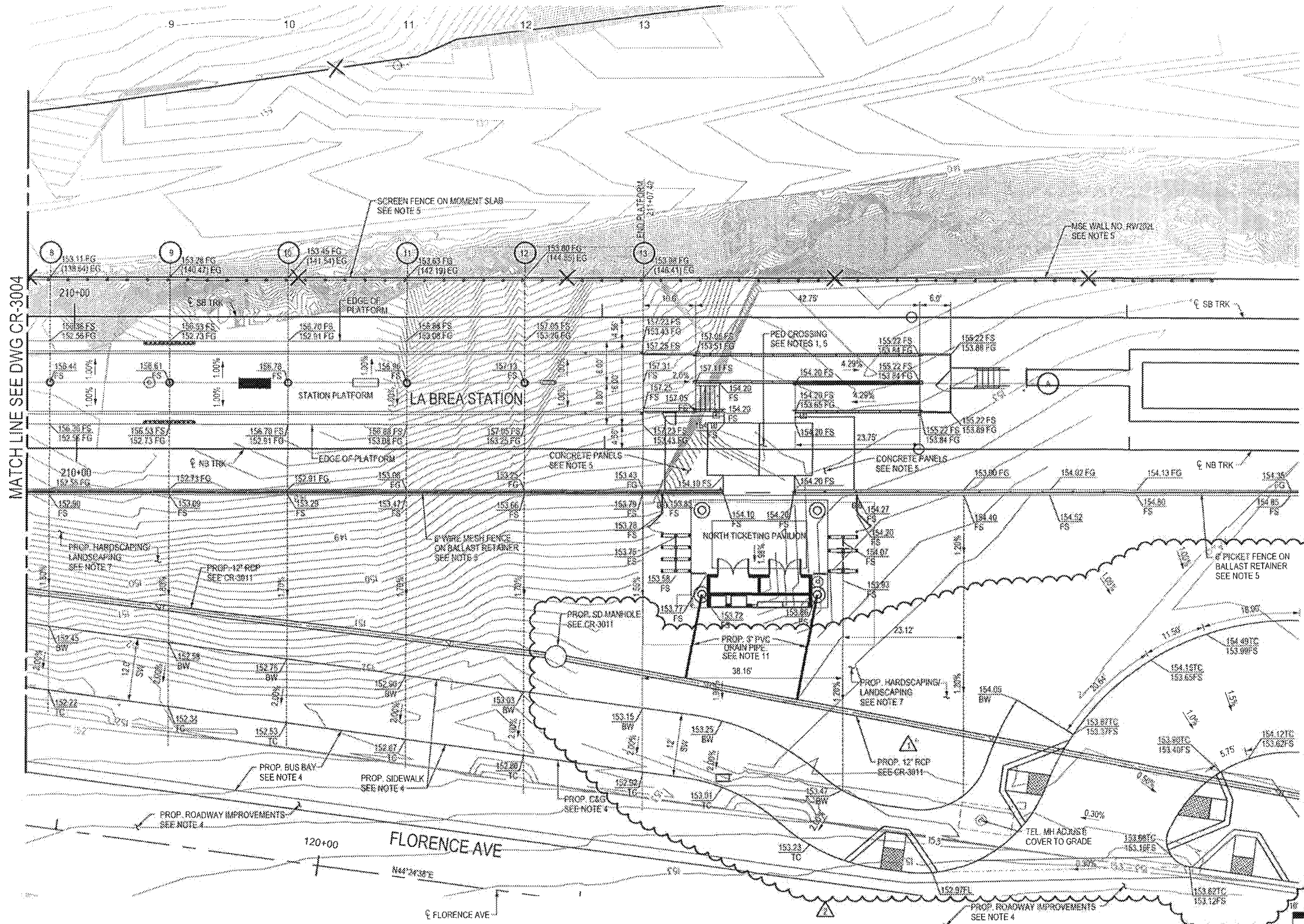
**CRENSHAW/LAX  
TRANSIT CORRIDOR PROJECT  
FLORENCE / LA BREA STATION  
BUS TRANSFER FACILITY GRADING  
SHEET 3 OF 3**

CONTRACT NO	C0988
DRAWING NO	CR-3003
SCALE	1" = 10'
SHEET NO	1



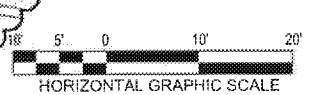
- APPROVED
- APPROVED AS NOTED (no resubmittal required)
- REJECTED, REVISE & RESUBMIT
- FOR RECORD ONLY

Director, Construction MGR/ Engineer:  Date: 9/26/14



- ABBREVIATIONS:**
- FS FINISH SURFACE
  - EG EXISTING GROUND
  - FG FINISHED GRADE

- NOTES:**
1. SEE ARCHITECTURAL (A) PLANS FOR PROPOSED STATION IMPROVEMENTS.
  2. EG ELEVATIONS REFER TO EXISTING GROUND ELEVATIONS.
  3. SEE B-1.5- SIGNING AND STRIPING (GEO) PLANS FOR PROPOSED STRIPING IMPROVEMENTS.
  4. SEE B-1.5- STREET MODIFICATION (CS) PLANS FOR PROPOSED ROADWAY IMPROVEMENTS.
  5. SEE CIVIL GUIDEWAY (CG) PLANS FOR IMPROVEMENTS WITHIN PROPOSED GUIDEWAY.
  6. FINISH GRADE (FG) ELEVATIONS REFER TO THE SURFACE ELEVATIONS WITHIN PROPOSED GUIDEWAY.
  7. SEE PACKAGE PW 23 - STATIONS LANDSCAPING FOR SURFACE TREATMENT WITHIN THE PLAZA AREA.
  8. SEE HARDSCAPE/LANDSCAPE (L) PLANS FOR PROPOSED LANDSCAPING IMPROVEMENTS.
  9. SEE SIGN DETAIL (ZA) PLANS FOR PAVEMENT MARKING AND SIGNS PERTAINING TO PARKING REGULATION.
  10. SEE PACKAGE PW 23 - STATIONS LANDSCAPING FOR SURFACE TREATMENT WITHIN THE PLAZA AREA.
  11. SEE PLUMBING (P) PLANS FOR DRAIN PIPE LOCATION AND SIZE INFORMATION.



PACKAGE B-1.4

THE PREPARATION OF THIS DRAWING HAS BEEN FINANCED IN PART THROUGH A GRANT FROM THE U.S. DEPARTMENT OF TRANSPORTATION, FEDERAL TRANSIT ADMINISTRATION (FTA), UNDER THE FEDERAL TRANSIT ACT OF 1964, AS AMENDED, AND IN PART BY THE TAXES OF THE CITIZENS OF LOS ANGELES COUNTY AND OF THE STATE OF CALIFORNIA.

REV	DATE	BY	APP	REG NO	EXPIRES	SEAL NO/DSCR	DESCRIPTION
1	7/15/16	DP		65608	09/30/17		NDC 130
2	2/22/16	RP	NB	65608	09/30/17	NOAH BUSCH	NDC 081
3	5/21/15			65608	09/30/15	NOAH BUSCH	AFC SUBMITTAL

DESIGNED BY  
ERIC NHAN  
DRAWN BY  
DAVID PARDEZ  
CHECKED BY  
RAVI PUDIPEDDI  
IN CHARGE  
NOAH BUSCH  
DATE  
5/21/15

A SIGNED & SEALED ORIGINAL OF REV 0 OF THIS DRAWING IS MAINTAINED BY WSCC

**M** LOS ANGELES COUNTY METROPOLITAN TRANSPORTATION AUTHORITY  
**Metro**  
WALSH-SHEA CORRIDOR CONSTRUCTORS  
1777 Oakland Blvd.  
Walnut Creek, CA 94596  
**HNTB**  
STEVE WHITAKER  
APPROVED  
**V&A INC.**  
3305 HOLMIST ST. SUITE 121  
LOS ANGELES, CA 90013  
213.972.9700  
NOAH BUSCH  
SUBMITTED

CRENSHAW/LAX  
TRANSIT CORRIDOR PROJECT  
FLORENCE / LA BREA STATION  
STATION GRADING  
SHEET 2 OF 2

CONTRACT NO	C0988
DRAWING NO	CR-3005
SCALE	1" = 10'
SHEET NO	2



### CONSTRUCTION NOTES

- 1 - CONSTRUCT CURB "TYPE A1" PER SPPWC STD PLAN 120-2, "CF" PER PLAN
- 2 - CONSTRUCT CURB AND GUTTER "TYPE A2" PER SPPWC STD PLAN 120-2, "CF" PER PLAN
- 3 - CONSTRUCT 4" THICK PCC SIDEWALK OVER 4" CMB, JOINTS PER SPPWC STD. PLAN 112-2
- 4 - CONSTRUCT CURB AND GUTTER - MOUNTABLE PER SPPWC STD 121-2, "CF" PER PLAN
- 5 - NOT USED
- 6 - BOLLARD PER METRO BRT DESIGN CRITERIA FIG. 3-5
- 7 - INSTALL 4" WHITE STRIPE (TYP)
- 8 - INSTALL PCC CONCRETE PAVEMENT, THICKNESS SHOWN ON PLAN
- 9 - INSTALL CRUSHED MISCELLANEOUS BASE (CMB) OVER COMPACTED NATIVE, THICKNESS SHOWN ON PLAN

CURVE DATA TABLE				
No.	RADIUS	DELTA	LENGTH	TANGENT
1	10.00'	26°39'29" RT	4.65'	2.37'
2	5.00'	105°47'27" LT	9.23'	6.61'
3	25.00'	78°50'21" RT	34.40'	20.55'
4	50.00'	70°51'26" RT	61.83'	35.57'
5	25.00'	76°40'35" LT	33.46'	19.77'

### NOTES:

1. FOR BUS TRANSFER FACILITY GRADING SEE DWG NO. CR-3001.
2. HORIZONTAL CONTROL (HC) POINTS ARE TO THE FACE OF CURB
3. SEE LANDSCAPE (L) PLANS FOR PROPOSED LANDSCAPING IMPROVEMENTS.

**M Metro**

APPROVED

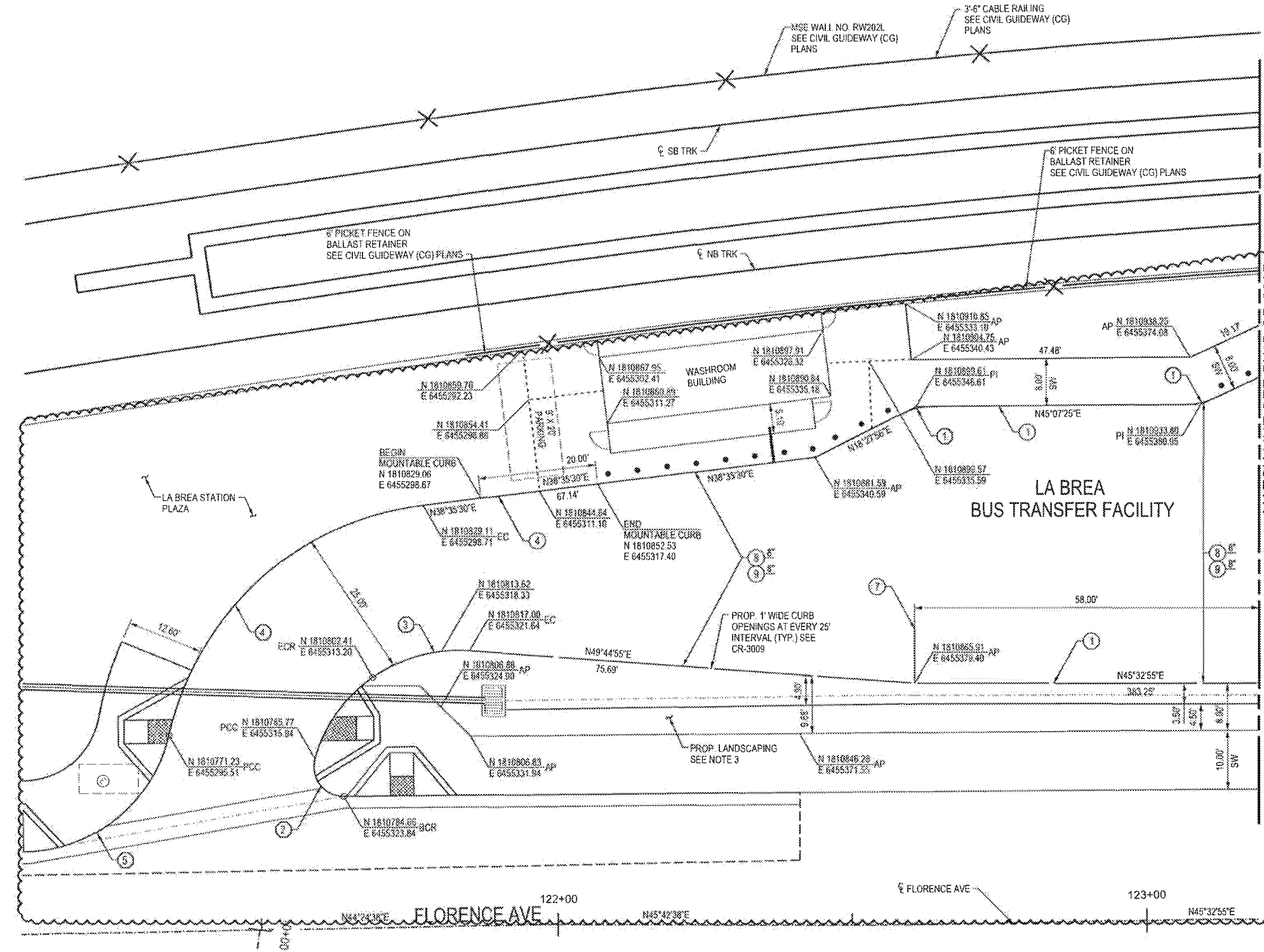
APPROVED AS NOTED (no resubmittal required)

REJECTED, REVISE & RESUBMIT

FOR RECORD ONLY

Director, Construction MGR/ Engineer: *[Signature]* Date: **9/20/14**

MATCH LINE SEE DWG CR-3007



PACKAGE B-1.4

THE PREPARATION OF THIS DRAWING HAS BEEN FINANCED IN PART THROUGH A GRANT FROM THE U.S. DEPARTMENT OF TRANSPORTATION, FEDERAL TRANSIT ADMINISTRATION (FTA), UNDER THE FEDERAL TRANSIT ACT OF 1964, AS AMENDED, AND IN PART BY THE TAXES OF THE CITIZENS OF LOS ANGELES COUNTY AND OF THE STATE OF CALIFORNIA.

REV	DATE	BY	APP	REG NO	EXPIRES	SEAL HOLDER	DESCRIPTION
0	5/21/15			65608	09/30/15	NOAH BUSCH	AFC SUBMITTAL

DESIGNED BY  
ERIC NHAN  
DRAWN BY  
DAVID PARDEZ  
CHECKED BY  
RAVI PUDIPEDDI  
IN CHARGE  
NOAH BUSCH  
DATE  
5/21/15

A SIGNED & SEALED ORIGINAL OF REV 0 OF THIS DRAWING IS MAINTAINED BY WSCC

**M Metro**

LOS ANGELES COUNTY METROPOLITAN TRANSPORTATION AUTHORITY

WALSH-SHEA CORRIDOR CONSTRUCTORS

1777 Oakland Blvd.  
Walnut Creek, CA 94596

**HNTB**

STEVE WHITAKER

**V&A INC.**  
3265 HENRY ST., SUITE 121  
LOS ANGELES, CA 90018  
213.972.9700

NOAH BUSCH

CRENSHAW/LAX  
TRANSIT CORRIDOR PROJECT  
LA BREA BUS TRANSFER FACILITY  
HORIZONTAL CONTROL  
SHEET 1 OF 3

PROJECT NO.	C0988
DRAWING NO.	CR-3006
SCALE	1" = 10'
SHEET NO.	1



**M Metro**

APPROVED  
 APPROVED AS NOTED  
 (no resubmittal required)  
 REJECTED, REVISE & RESUBMIT  
 FOR RECORD ONLY

Director, Construction MGR/Engineer: *AD* Date: *9/20/14*

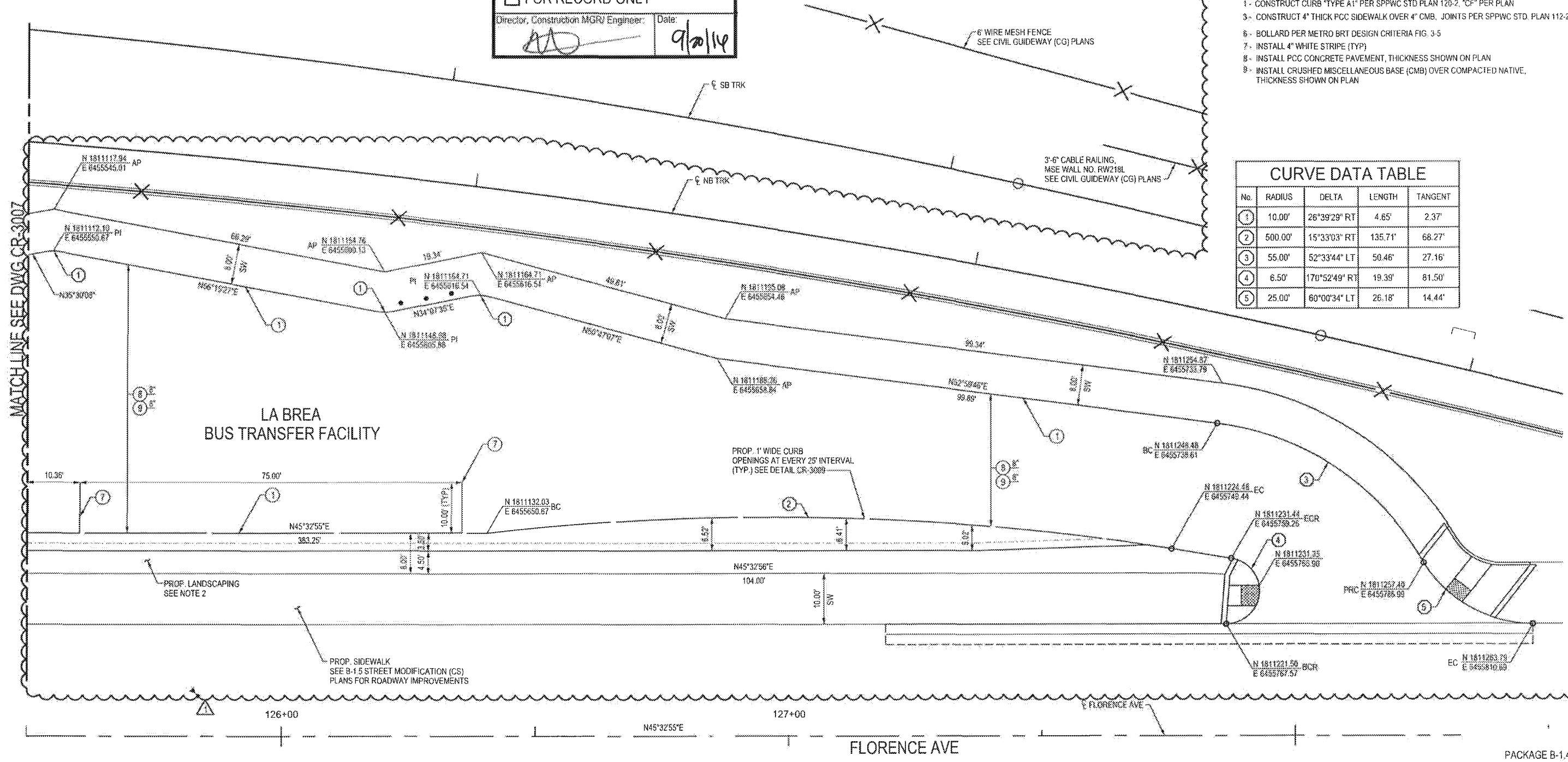
**NOTES:**

- FOR BUS TRANSFER FACILITY GRADING SEE DWG NO. CR-3003
- SEE LANDSCAPE (L) PLANS FOR PROPOSED LANDSCAPING IMPROVEMENTS.

**CONSTRUCTION NOTES**

- CONSTRUCT CURB TYPE A1 PER SPPWC STD PLAN 120-2, "CF" PER PLAN
- CONSTRUCT 4" THICK PCC SIDEWALK OVER 4" CMB, JOINTS PER SPPWC STD. PLAN 112-2
- BOLLARD PER METRO BRT DESIGN CRITERIA FIG. 3-5
- INSTALL 4" WHITE STRIPE (TYP)
- INSTALL PCC CONCRETE PAVEMENT, THICKNESS SHOWN ON PLAN
- INSTALL CRUSHED MISCELLANEOUS BASE (CMB) OVER COMPACTED NATIVE, THICKNESS SHOWN ON PLAN

CURVE DATA TABLE				
No.	RADIUS	DELTA	LENGTH	TANGENT
1	10.00'	26°39'29" RT	4.65'	2.37'
2	500.00'	15°33'03" RT	135.71'	68.27'
3	55.00'	52°33'44" LT	50.46'	27.16'
4	6.50'	170°52'49" RT	19.39'	61.50'
5	25.00'	60°00'34" LT	26.18'	14.44'



PACKAGE B-1.4

THE PREPARATION OF THIS DRAWING HAS BEEN FINANCED BY THE U.S. DEPARTMENT OF TRANSPORTATION, FEDERAL TRANSIT ADMINISTRATION (FTA), UNDER THE FEDERAL TRANSIT ACT OF 1994, AS AMENDED, AND IN PART BY THE TAXES OF THE CITIZENS OF LOS ANGELES COUNTY AND OF THE STATE OF CALIFORNIA.

REV	DATE	BY	APP	REG NO	EXPIRES	SEAL HOLDER	DESCRIPTION
0	7/15/16	DP		65608	09/30/17		NDC 130
0	5/21/15			65608	09/30/15	NOAH BUSCH	AFC SUBMITTAL

DESIGNED BY  
ERIC NHAN  
CHECKED BY  
DAVID PARDEZ  
DESIGNED BY  
RAVI PUDIPEDDI  
NOAH BUSCH  
DATE  
5/21/15

A SIGNED & SEALED ORIGINAL OF REV 0 OF THIS DRAWING IS MAINTAINED BY WSCC

**M Metro** LOS ANGELES COUNTY METROPOLITAN TRANSPORTATION AUTHORITY

WALSH-SHEA CORRIDOR CONSTRUCTORS  
1777 Oakland Blvd.  
Walnut Creek, CA 94596

**HNTB**  
STEVE WHITAKER  
APPROVER

**V&A INC.**  
NOAH BUSCH  
SUBMITTER

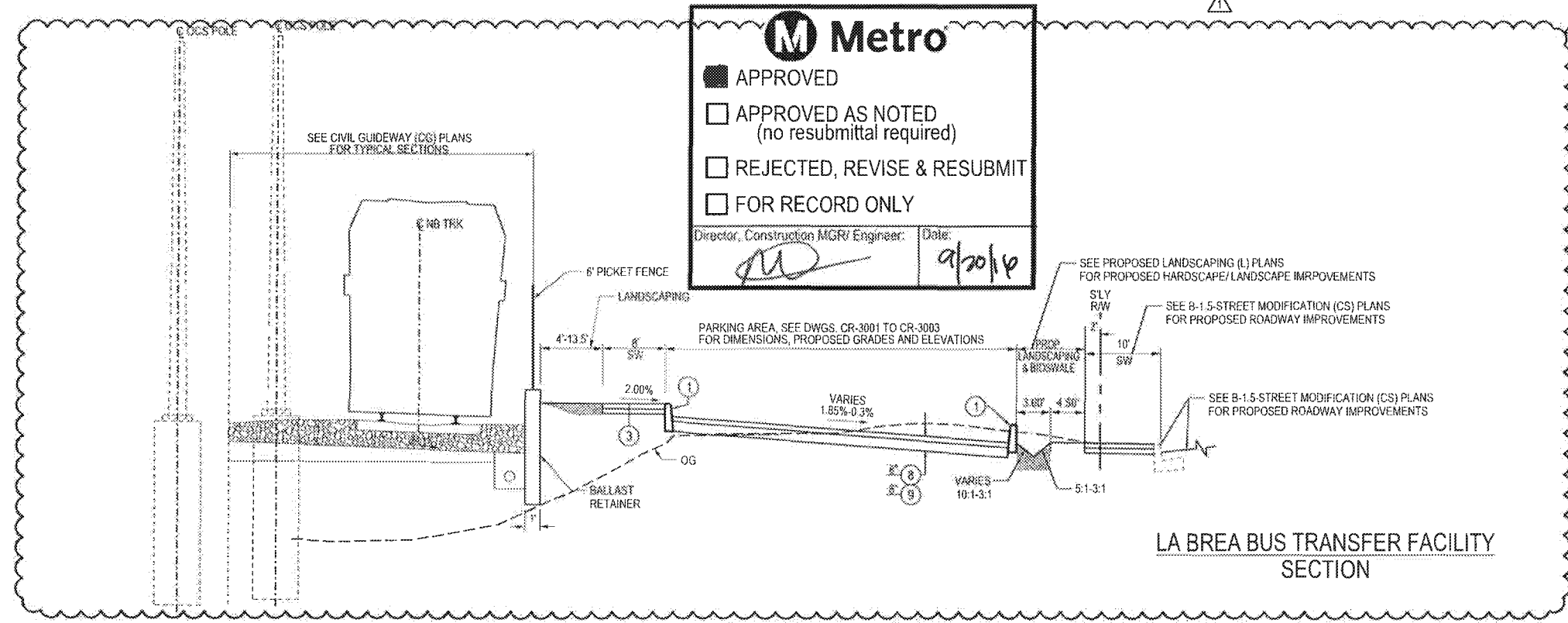
CRENSHAW/LAX  
TRANSIT CORRIDOR PROJECT  
LA BREA BUS TRANSFER FACILITY  
HORIZONTAL CONTROL  
SHEET 3 OF 3

CONTRACT NO.	C0988
DRAWING NO.	CR-3008
SCALE	1" = 10'
SHEET NO.	1

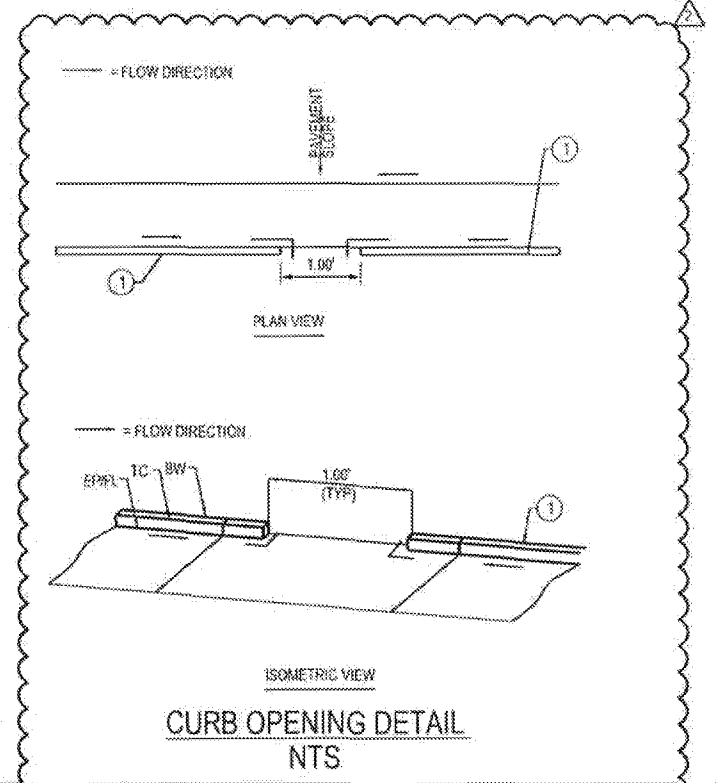
**M Metro**

APPROVED  
 APPROVED AS NOTED (no resubmittal required)  
 REJECTED, REVISE & RESUBMIT  
 FOR RECORD ONLY

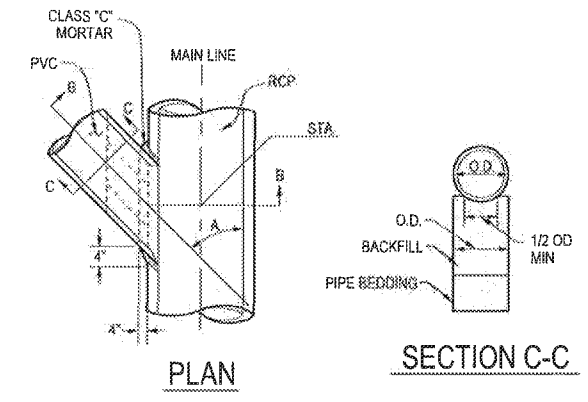
Director, Construction MGR/ Engineer: *[Signature]* Date: 9/20/16



LA BREA BUS TRANSFER FACILITY SECTION

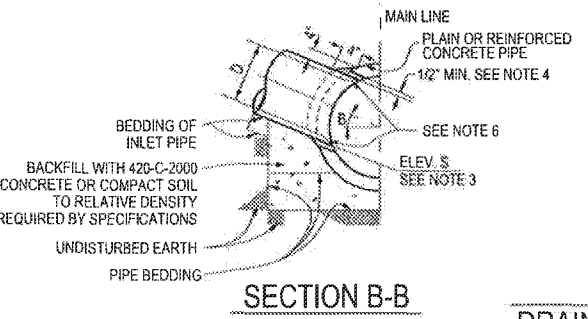


CURB OPENING DETAIL NTS

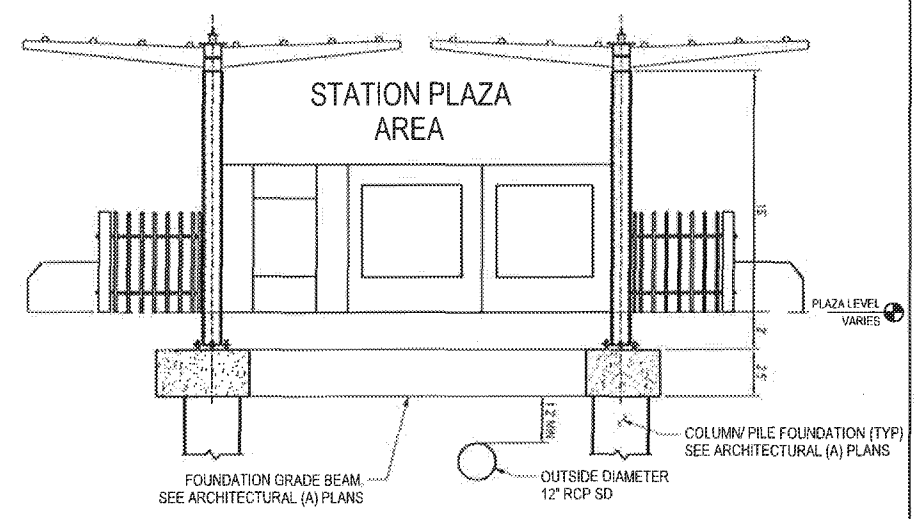


**PIPE CONNECTION PVC TO RCP NOTES:**

1. ANGLE A SHALL BE BETWEEN 45 DEGREES AND 90 DEGREES. D SHALL BE 24 INCHES OR LESS. FOR SMALLER VALUES OF A AND LARGER VALUES OF D USE APPROPRIATE STANDARD STRUCTURE.
2. IN NO CASE SHALL THE OUTSIDE DIAMETER OF THE INLET PIPE EXCEED ONE-HALF THE INSIDE DIAMETER OF THE MAIN STORM DRAIN.
3. CENTER LINE OF INLET SHALL BE ON RADIUS OF MAIN STORM DRAIN EXCEPT WHERE ELEVATION S IS SHOWN ON PROJECT DRAWINGS.
4. THE OPENING INTO THE MAIN STORM DRAIN SHALL BE THE OUTSIDE DIAMETER OF THE INLET PIPE PLUS ONE INCH MINIMUM OR 3" MAXIMUM.
5. ANGLE B SHALL BE 45 DEGREES OR LESS.
6. FILE OR CHIP END OF CONNECTOR PIPE FLUSH WITH INNER SURFACE OF MAINLINE PIPE. ROUND EDGE OF CONNECTOR PIPE OR REINFORCED CONCRETE PIPE.
7. STATION SPECIFIED ON DRAWINGS APPLIES AT THE INTERSECTION OF INSIDE WALL STORM DRAIN AND CENTER LINE OF INLET PIPE.



DETAIL B DRAINAGE PIPE CONNECTION PVC TO RCP



DETAIL C SOUTH STATION ENTRANCE TYPICAL

**NOTES:**

1. SEE CIVIL GUIDEWAY (CG) PLANS AND TYPICAL SECTIONS FOR IMPROVEMENTS WITHIN PROPOSED GUIDEWAY.
2. SEE DWG. CR-3001 FOR PLAN VIEW OF GRADING DETAILS.

**CONSTRUCTION NOTES**

1. CONSTRUCT CURB "TYPE A1" PER SPPWC STD. PLAN 128-2, "CF" PER PLAN.
2. CONSTRUCT 4" THICK PCC SIDEWALK OVER 4" CMB, JOINTS PER SPPWC STD. PLAN 112-2.
3. INSTALL PCC CONCRETE PAVEMENT, THICKNESS SHOWN ON PLAN.
4. INSTALL CRUSHED MISCELLANEOUS BASE (CMB) OVER COMPACTED NATIVE. THICKNESS SHOWN ON PLAN.

PACKAGE B-1.4

THE PREPARATION OF THIS DRAWING HAS BEEN FINANCED IN PART THROUGH A GRANT FROM THE U.S. DEPARTMENT OF TRANSPORTATION, FEDERAL TRANSIT ADMINISTRATION (FTA) UNDER THE FEDERAL TRANSIT ACT OF 1964, AS AMENDED, AND IN PART BY THE SALES OF THE CRENSHAW/LAX FLORENCE / LA BREA STATION BUS TRANSFER FACILITY DETAIL SHEET OF THE STATE OF CALIFORNIA.

REV	DATE	BY	APP	REG NO	EXPIRES	SEAL HOLDER	DESCRIPTION
1	7/15/16	DP	[Signature]	65608	09/30/17	[Signature]	NDC 130
2	2/22/16	RP	NB	65608	09/30/17	NOAH BUSCH	NDC 081
3	5/21/15			65608	09/30/15	NOAH BUSCH	AFC SUBMITTAL

DESIGNED BY: ERIC NHAN  
 DRAWN BY: DAVID PARDEZ  
 CHECKED BY: RAVI PUDIPEDDI  
 IN CHARGE: NOAH BUSCH  
 DATE: 5/21/15

A SIGNED & SEALED ORIGINAL OF REV 0 OF THIS DRAWING IS MAINTAINED BY WSCC

**M Metro** LOS ANGELES COUNTY METROPOLITAN TRANSPORTATION AUTHORITY

WALSH-SHEA CORRIDOR CONSTRUCTORS  
 1777 Oakland Blvd.  
 Walnut Creek, CA 94596

**HNTB** STEVE WHITAKER APPROVED

**V&A INC.** NOAH BUSCH SUBMITTED

CRENSHAW/LAX TRANSIT CORRIDOR PROJECT  
 FLORENCE / LA BREA STATION BUS TRANSFER FACILITY  
 DETAIL SHEET

CONTRACT NO	C0988
DRAWING NO	CR-3009
SCALE	NO SCALE
SHEET NO	2