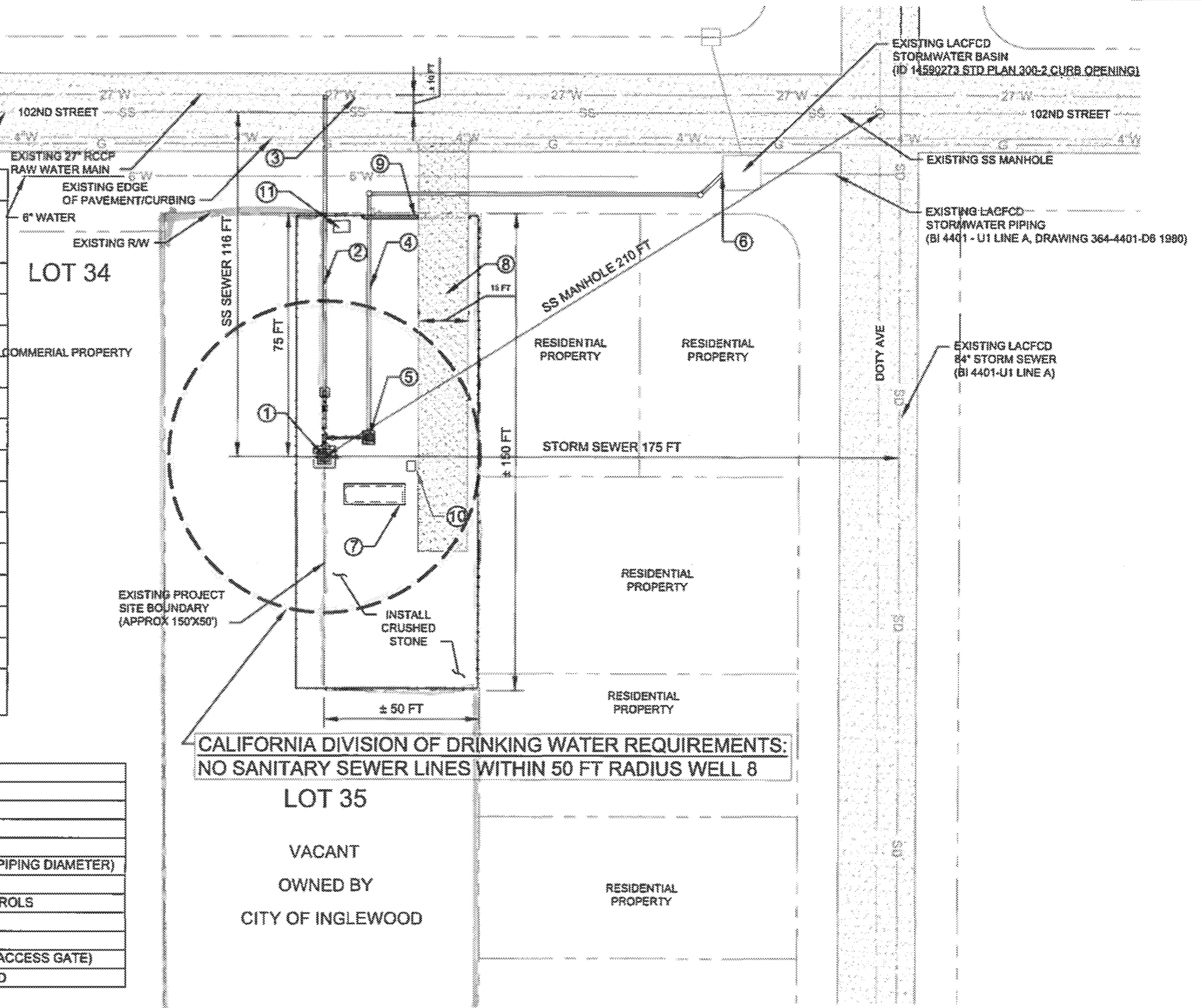




WELL 8 DESIGN PARAMETERS	
EXISTING 27" RAW WATER MAIN PRESSURE AT CONNECTION	NOMINAL PRESSURE: 75 PSI MAXIMUM PRESSURE: 100 PSI
CAPACITY	1300 GPM
TDH	300 FT
HORSE POWER	250 HP
MOTOR RPM	1800
POWER	480V/3PH (SCE)
CONTROL	VARIABLE FREQUENCY DRIVE (VFD)
MIN EFF	70%
DISCHARGE PIPING DIAMETER	12 INCH STEEL CML (PAINTED ABOVE GRADE)
WASTE LINE PIPING DIAMETER	10 INCH STEEL CML (PAINTED)
GRAVITY WASTE LINE DIAMETER	18 INCH STEEL CML
MIN AIR GAP REQUIREMENTS	2 TIMES THE PIPING DIAMETER, 20 INCHES
PUMP/VALVE ENCLOSURES	NONE, ABOVE GRADE.
ELECTRICAL/CONTROLS ENCLOSURE	NEMA 250 TYPE 4X, INCLUDES VFD COOLING SYSTEM
DISINFECTION/ON-SITE TREATMENT SYSTEMS	NO ON SITE TREATMENT OF THE WATER WILL BE PROVIDED



**CALIFORNIA DIVISION OF DRINKING WATER REQUIREMENTS:
NO SANITARY SEWER LINES WITHIN 50 FT RADIUS WELL 8**

KEY NOTES	
1	WELL 8
2	CONSTRUCT DISCHARGE LINE
3	DISCHARGE CONNECTION TO 27" RCCP RAW WATER MAIN
4	CONSTRUCT WASTE LINE
5	WASTE LINE AIR GAP DISCHARGE TO CATCH BASIN 18 INCHES (2 TIMES PIPING DIAMETER)
6	WASTE LINE CONNECTION TO EXISTING LACFCD STORM WATER BASIN
7	ELECTRICAL AND VFD SYSTEM CONTROLS, TELEMETRY ANTENNA/CONTROLS
8	CONSTRUCT ASPHALT DRIVE ACCESS WAY
9	CONSTRUCT 6 FT SECURITY FENCING AND AND ACCESS GATE
10	CONSTRUCT SECURITY CAMERAS (ONE ON PUMP EQUIPMENT, ONE ON ACCESS GATE)
11	CONSTRUCT SCE ELECTRICAL TRANSFORMER CONCRETE SUPPORT PAD

PREPARED FOR 	 www.tetratech.com 100 East Via Verde Ave, Suite 240 San Dimas, CA 91773 T: (909) 305-2930 F: (909) 305-2959	City of Inglewood Well 8	Project No.: 200-202670-180001
		CITY OF INGLEWOOD WELL NO. 8 DDW EXHIBIT	Date: Feb 2018 Designed By: TT Figure FIGURE 1-3

2/21/2018 3:28:17 PM - P:\202670\200-202670-18001\CAD\SHEETFILES\FIG 1-3 DDW EXHIBIT.DWG - WALKER, STEVEN

Bar Measures 1 Inch
NOT TO SCALE

Copyright Tetra Tech