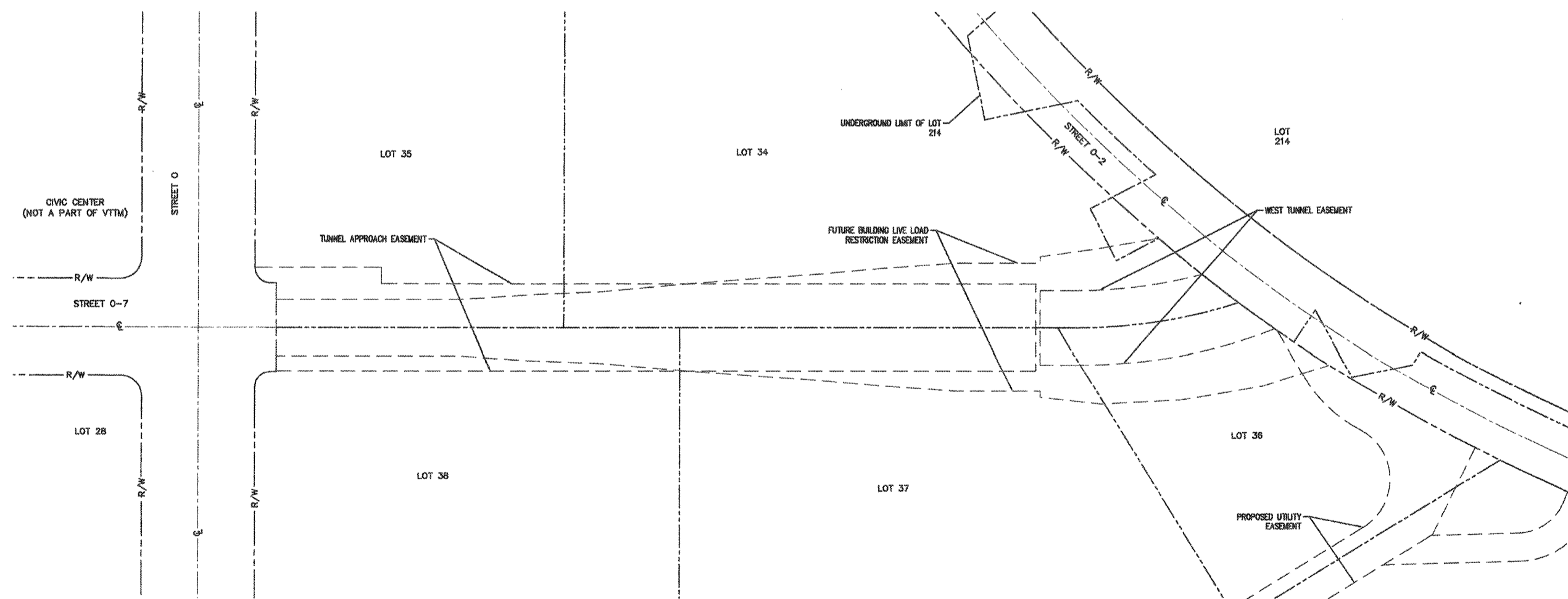


VESTING TENTATIVE TRACT MAP NO. 80314
 IN THE CITY OF INGLEWOOD, CA
 FOR MERGER, RESUBDIVISION AND CONDOMINIUM PURPOSES



03/07/18

| | | | |
|--|---|---|---|
| | DAVID EVANS AND ASSOCIATES, INC. 201 S. TOLUERA STREET, SUITE 240 LOS ANGELES, CA 90012 Phone: 213.337.3680 | HOLLYWOOD PARK LAND CO., LLC L.A. STADIUM AND ENTERTAINMENT DISTRICT AT HOLLYWOOD PARK | |
| | | DRAWN BY: LR DESIGNED BY: KM CHECKED BY: KM | PREPARED UNDER THE SUPERVISION OF: KARL MALLICK, R.C.E. 42529 DATE _____ |

David Evans and Associates, Inc. 201 S. Toluera Street, Suite 240, Los Angeles, CA 90012. 213.337.3680. www.david-evans.com. 03/07/18. 06 of 25.