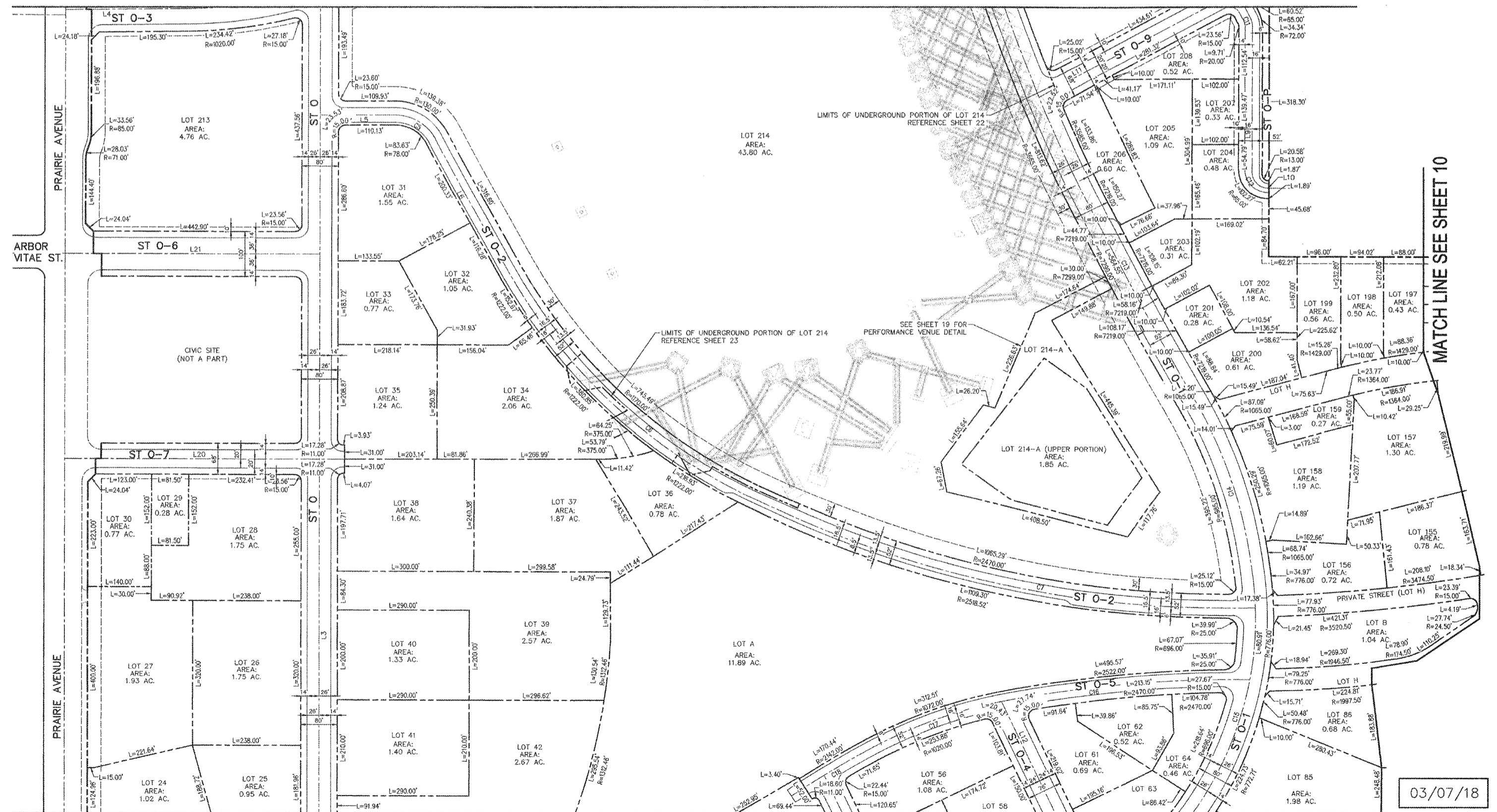


VESTING TENTATIVE TRACT MAP NO. 80314
 IN THE CITY OF INGLEWOOD, CA
 FOR MERGER, RESUBDIVISION AND CONDOMINIUM PURPOSES

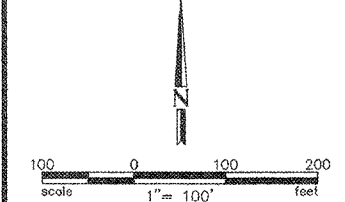
MATCH LINE SEE SHEET 09



MATCH LINE SEE SHEET 10

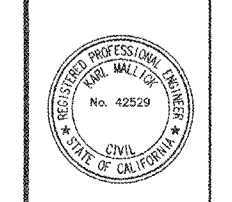
03/07/18

MATCH LINE SEE SHEET 07



- LEGEND**
- EX. CURB
 - BOUNDARY/ ROW/ PROPERTY LINE
 - PROPOSED CURB
 - PROPOSED LOT LINE
 - CENTER LINE
 - TOP OF SLOPE
 - BOTTOM OF SLOPE

NOTE: SEE SHEET 11 FOR CURVE AND LENGTH TABLES



DAVID EVANS AND ASSOCIATES INC.
 201 S. FIGUEROA STREET, SUITE 240
 LOS ANGELES, CA 90012
 Phone: 213.337.9880

PREPARED UNDER THE SUPERVISION OF:
 KARL MALLIK, R.C.L. 42529

HOLLYWOOD PARK LAND CO., LLC		L.A. STADIUM AND ENTERTAINMENT DISTRICT AT HOLLYWOOD PARK	
DRAWN BY: LR	DESIGNED BY: KM	CHECKED BY: KM	CITY ENGINEER: DATE:
VESTING TENTATIVE TRACT MAP MAP NO. 80314		SITE PARCELS	
SCALE: N.T.S.	DATE: 03/07/18	SHEET NO.: 08	OF 25