



IRRIGATION LEGEND

SYMBOL	MANUF.	MODEL NO. / DESCRIPTION	DETAIL
[Symbol]	HUNTER	ICZ-101-40-LF DRIP CONTROL ZONE KIT. 1" ICV GLOBE VALVE WITH 1" HY100 FILTER SYSTEM PRESSURE REGULATION: 40PSI. FLOW RANGE: 5 GPM TO 15 GPM. 150 MESH STAINLESS STEEL SCREEN.	SEE 10L204
[Symbol]	HUNTER	DRIP LINE 0.4 GPH @ 12" O.C.	

IRRIGATION UTILITIES

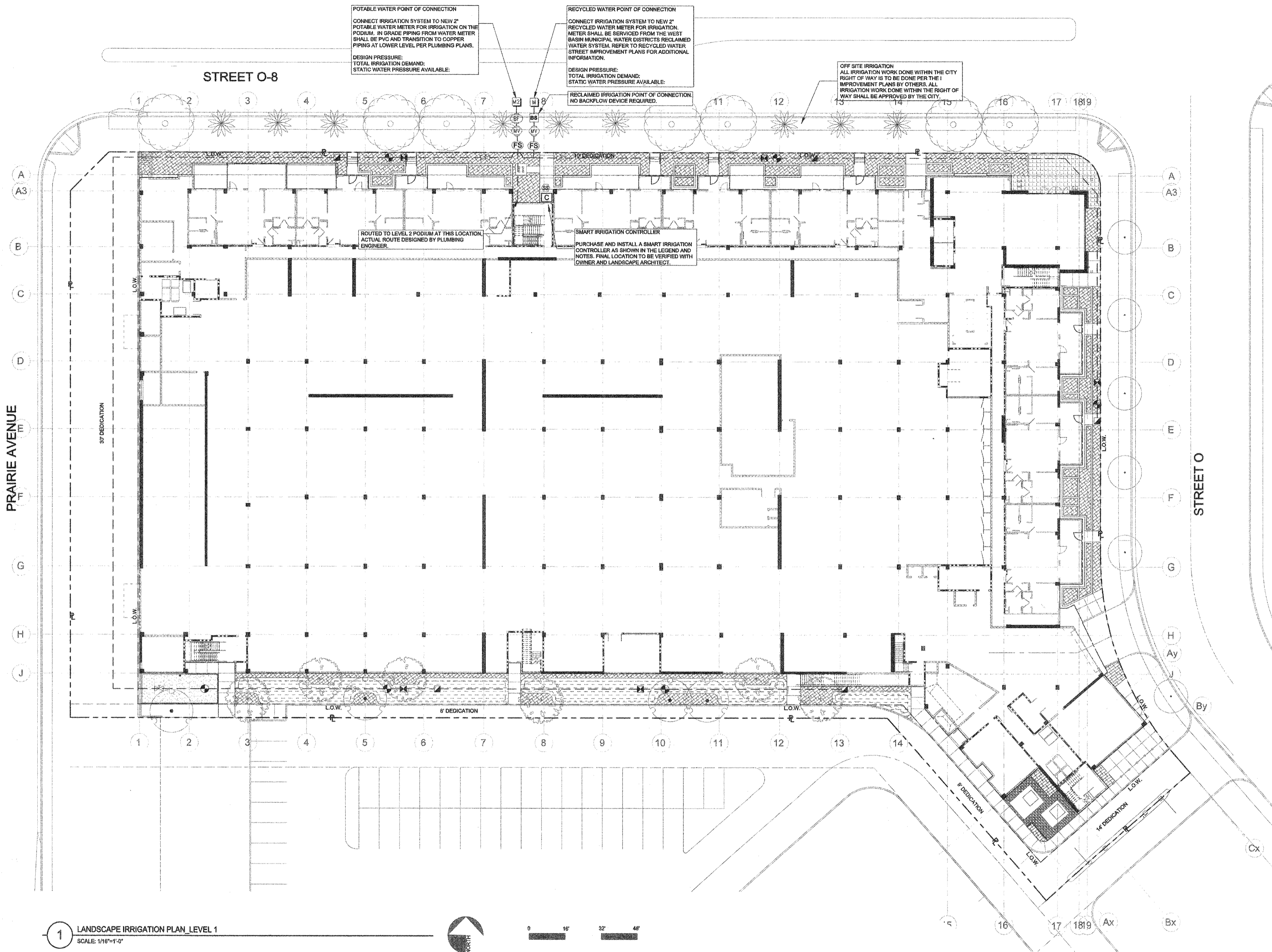
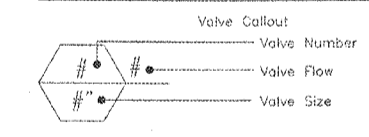
SYMBOL	MANUF.	MODEL NO. / DESCRIPTION	DETAIL
[M]	WATER METER	1" DEDICATED LANDSCAPE METER, SEE CIVIL ENGINEER DWGS.	
[BS]	WYATT	BASKET STRAINER	
[M]	BUCKNER-SUPERIOR	3000 1.1/4" NORMALLY CLOSED BRASS MASTER VALVE THAT PROVIDES DIRTY WATER PROTECTION AND 3-WAY SOLENOID DESIGN.	SEE 10L211
[FS]	HUNTER	HFS-180 FLOW SENSOR FOR USE WITH ACC CONTROLLER. 1-1/2" SCHEDULE 40 SENSOR BODY, 24 VAC, 2 AMP.	SEE 10L211
[Symbol]	HUNTER	ICV-101G-FS 1" PLASTIC ELECTRIC REMOTE CONTROL VALVES, GLOBE CONFIGURATION WITH NPT THREADED INLET/OUTLET, FOR COMMERCIAL/MUNICIPAL USE. WITH FILTER BENTRY.	SEE 7A1211
[Symbol]	MATCO-NORCA	759 BRASS SHUT OFF BALL VALVE, 1/2" TO 4". TWO PIECE BODY, BLOW-OUT PROOF STEM, CHROME PLATED SOLID BRASS BALL, THREADED, WITH PTFE SEALS. SAME SIZE AS MAINLINE PIPE.	SEE 4L1211
[Symbol]	HUNTER	HQ 44-LRC 1" BRASS QUICK-COUPLING VALVE, WITH CORROSION-RESISTANT STAINLESS STEEL SPRING, LOCKING THERMOPLASTIC RUBBER COVER, AND 2-PIECE BODY.	SEE 0A1211
[Symbol]	HUNTER	SHRUB ROTARY	

IRRIGATION CONTROLLER

SYMBOL	MANUF.	MODEL NO. / DESCRIPTION	DETAIL
[C]	HUNTER	IC-600-M W(2) ICM-600 MODULES MODULAR CONTROLLER, 18 STATIONS, OUTDOOR MODEL, METAL CABINET. WITH 1 MODULE REQUIRED. COMMERCIAL USE.	SEE 11L211
[SS]	HUNTER	W55-SEN WIRELESS SOLAR, RAIN FREEZE SENSOR WITH OUTDOOR INTERFACE. CONNECTS TO HUNTER X-CORE CONTROLLER. INSTALL AS NOTED. INCLUDES GUTTER MOUNT BRACKET. MODULE NOT INCLUDED.	SEE 12L211
[E]	N/A	120 VOLT POWER SUPPLY PROVIDED BY ELECTRICIAN, FIELD VERIFY LOCATION.	

IRRIGATION PIPING

SYMBOL	MANUF.	DESCRIPTION
[Symbol]	AS APPROVED	PRESSURE MAINLINE SCH. 40 PVC IN PLANTER AREAS FOR SIZES 3/4" - 1-1/2". FOR 2" & LARGER USE CLASS 315 PVC. BURY MIN. 18" BELOW GRADE(SIZE AS NOTED ON PLAN).
[Symbol]	AS APPROVED	TYPE 1C COPPER PIPING MAINLINE DESIGNED BY PLUMBING ENGINEER AND SUPPLIED BY A-AND INSTALLED BY PLUMBER.



POTABLE WATER POINT OF CONNECTION
CONNECT IRRIGATION SYSTEM TO NEW 2" POTABLE WATER METER FOR IRRIGATION ON THE PODIUM. IN GRADE PIPING FROM WATER METER SHALL BE PVC AND TRANSITION TO COPPER. PIPING AT LOWER LEVEL PER PLUMBING PLANS.
DESIGN PRESSURE:
TOTAL IRRIGATION DEMAND:
STATIC WATER PRESSURE AVAILABLE:

RECYCLED WATER POINT OF CONNECTION
CONNECT IRRIGATION SYSTEM TO NEW 2" RECYCLED WATER METER FOR IRRIGATION. METER SHALL BE SERVICED FROM THE WEST BASIN MUNICIPAL WATER DISTRICTS' RECLAIMED WATER SYSTEM. REFER TO RECYCLED WATER STREET IMPROVEMENT PLANS FOR ADDITIONAL INFORMATION.
DESIGN PRESSURE:
TOTAL IRRIGATION DEMAND:
STATIC WATER PRESSURE AVAILABLE:

RECLAIMED IRRIGATION POINT OF CONNECTION
NO BACKFLOW DEVICE REQUIRED.

OFF SITE IRRIGATION
ALL IRRIGATION WORK DONE WITHIN THE CITY RIGHT OF WAY IS TO BE DONE PER THE I IMPROVEMENT PLANS BY OTHERS. ALL IRRIGATION WORK DONE WITHIN THE RIGHT OF WAY SHALL BE APPROVED BY THE CITY.

ROUTED TO LEVEL 2 PODIUM AT THIS LOCATION. ACTUAL ROUTE DESIGNED BY PLUMBING ENGINEER.

SMART IRRIGATION CONTROLLER. PURCHASE AND INSTALL A SMART IRRIGATION CONTROLLER AS SHOWN IN THE LEGEND AND NOTES. FINAL LOCATION TO BE VERIFIED WITH OWNER AND LANDSCAPE ARCHITECT.

1 LANDSCAPE IRRIGATION PLAN_LEVEL 1
SCALE: 1/16"=1'-0"

