

IRRIGATION LEGEND

SUBSURFACE IRRIGATION

SYMBOL	MANUF.	MODEL NO. / DESCRIPTION	DETAIL
	HUNTER	ICZ-101-40-1F DRIP CONTROL ZONE KIT: 1" ICV GLOBE VALVE WITH 1" HY100 FILTER SYSTEM PRESSURE REGULATION: 40PSI. FLOW RANGE: 5 GPM TO 15 GPM, 150 MESH STAINLESS STEEL SCREEN.	SEE 1A1204
	HUNTER	DRIP LINE 0.4 GPH @ 12" O.C.	

IRRIGATION UTILITIES

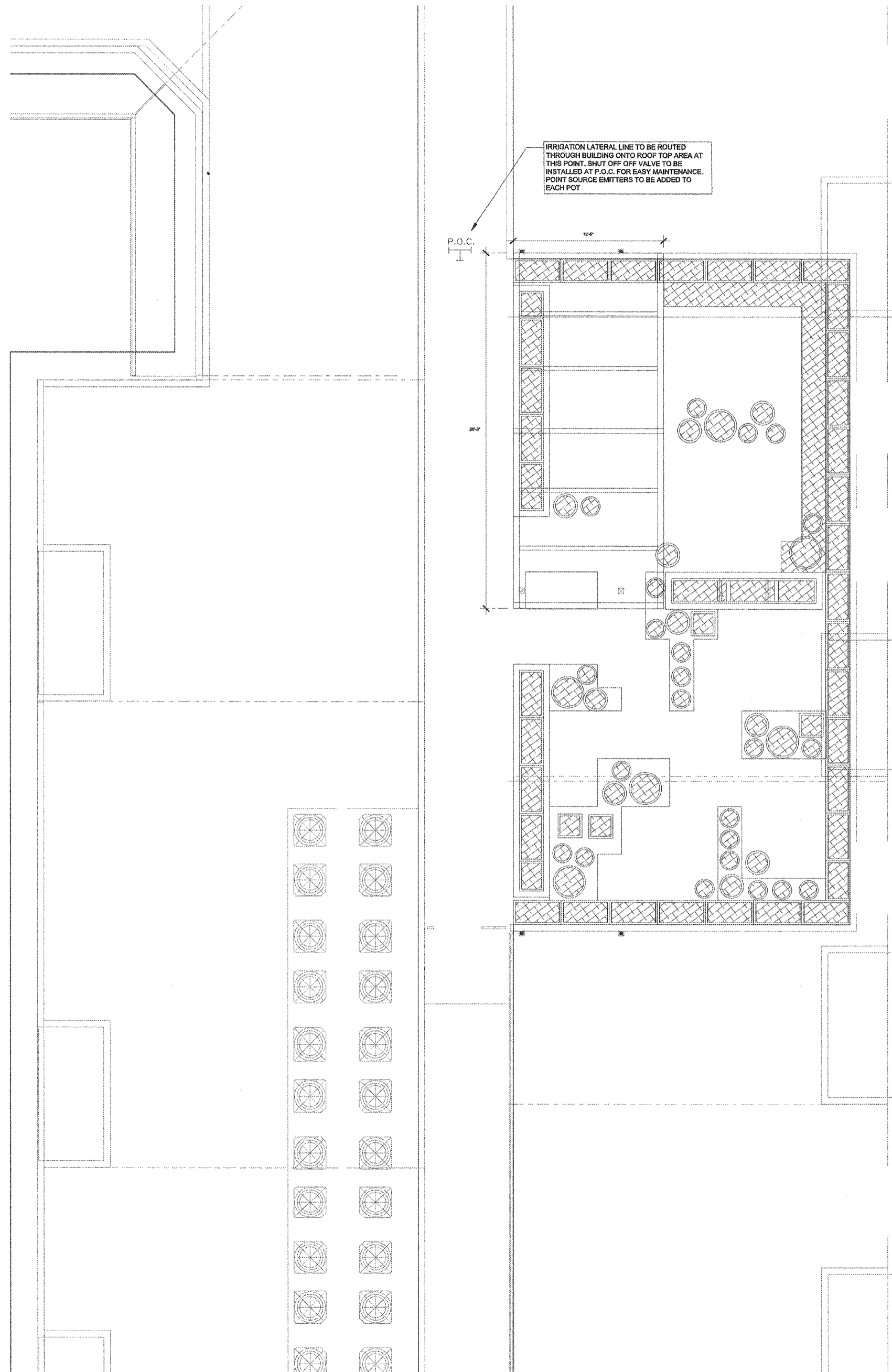
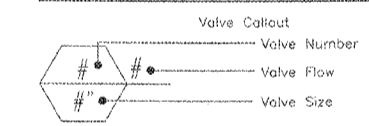
SYMBOL	MANUF.	MODEL NO. / DESCRIPTION	DETAIL
	WATER METER	1" DEDICATED LANDSCAPE METER, SEE CIVIL ENGINEER DWG.	
	WYATT	BASKET STRAINER	
	BUCKNER-SUPERIOR	3000 1-1/4" NORMALLY CLOSED BRASS MASTER VALVE THAT PROVIDES DIRTY WATER PROTECTION AND 3-WAY SOLENOID DESIGN.	SEE 10L1211
	HUNTER	HFS-180 FLOW SENSOR FOR USE WITH ACC. CONTROLLER. 1-1/2" SCHEDULE 40 SENSOR BODY, 24 VAC, 2 AMP.	SEE 10L1211
	HUNTER	ICV-101G-FS 1" PLASTIC ELECTRIC REMOTE CONTROL VALVES, GLOBE CONFIGURATION, WITH NPT THREADED INLET/OUTLET, FOR COMMERCIAL/MUNICIPAL USE. WITH FILTER SENTRY.	SEE 7A1211
	MATCO-NORCA	750 BRASS SHUT OFF BALL VALVE, 1/2" TO 4". TWO PIECE BODY, BLOW-OUT PROOF STEM, CHROME PLATED SOLID BRASS BALL, THREADED, WITH PTFE SEATS. SAME SIZE AS MAINLINE PIPE.	SEE 4L1211
	HUNTER	HQ 44-LRC 1" BRASS QUICK-COUPING VALVE, WITH CORROSION-RESISTANT STAINLESS STEEL SPRING, LOCKING THERMOPLASTIC RUBBER COVER, AND 2-PIECE BODY.	SEE 8L1211
	HUNTER	SHRUB ROTARY	

IRRIGATION CONTROLLER

SYMBOL	MANUF.	MODEL NO. / DESCRIPTION	DETAIL
	HUNTER	IC-600-MW (2) KM-600 MODULES MODULAR CONTROLLER, 18 STATIONS, OUTDOOR MODEL, METAL CABINET. WITH 1 MODULE REQUIRED, COMMERCIAL USE.	SEE 11L1211
	HUNTER	WSS-SEN WIRELESS SOLAR, RAIN FREEZE SENSOR WITH OUTDOOR INTERFACE, CONNECTS TO HUNTER X-CORE CONTROLLER, INSTALL AS NOTED, INCLUDES GUTTER MOUNT BRACKET, MODULE NOT INCLUDED.	SEE 12L1211
	N/A	120 VOLT POWER SUPPLY PROVIDED BY ELECTRICIAN, FIELD VERIFY LOCATION.	

IRRIGATION PIPING

SYMBOL	MANUF.	DESCRIPTION
	AS APPROVED	PRESSURE MAINLINE SCH. 40 PVC IN PLANTER AREAS FOR SIZES 3/4" - 1-1/2", FOR 2" & LARGER USE CLASS 315 PVC. BURY MIN. 18" BELOW GRADE/SIZE AS NOTED ON PLAN.
	AS APPROVED	TYPE 'K' COPPER PIPING MAINLINE DESIGNED BY PLUMBING ENGINEER AND SUPPLIED BY AND INSTALLED BY PLUMBER.



P.O.C.
 12'0"
 20'
 12'0"
 STREET 0
 L.O.W.
 12'0"
 20'
 12'0"