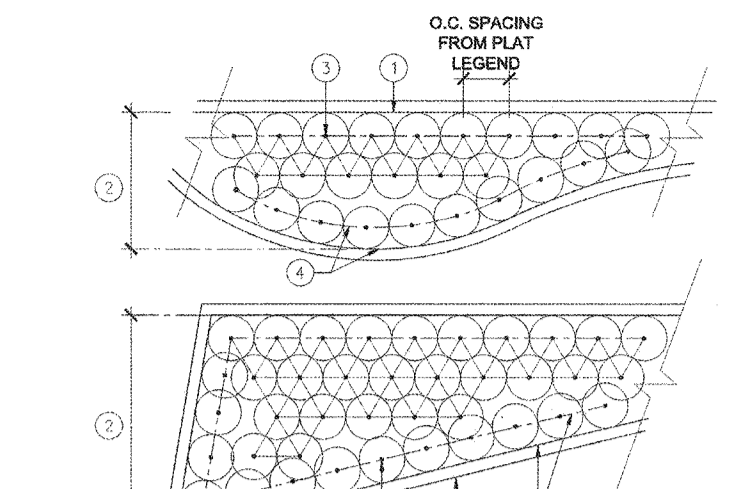
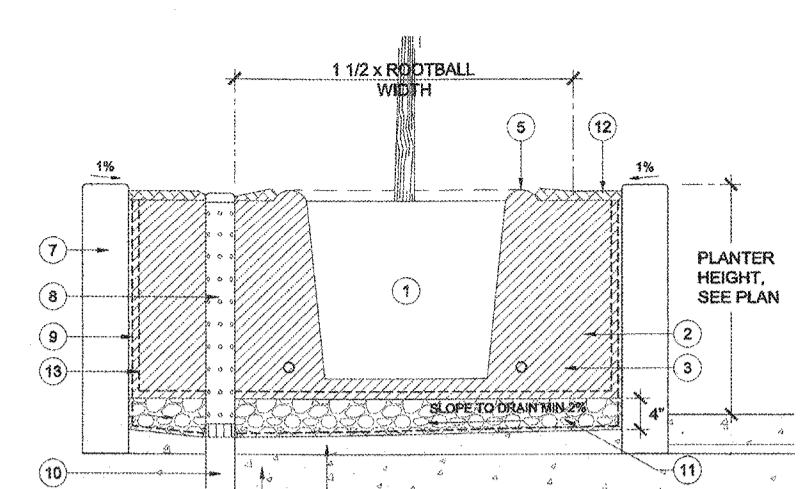


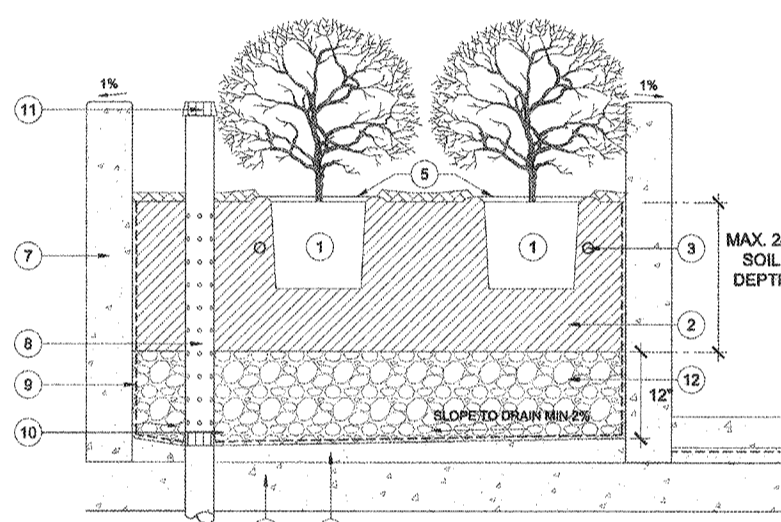
- SECTION**
- LEGEND**
- |   |                                 |
|---|---------------------------------|
| 1. ROOTBALL   | 6. WATERING BASIN               |
| 2. PLANTER BACKFILL MIX S-1: 75% SAND 10% NITROHUMUS 15% FIR BARK | 7. FERTILIZER TABLET            |
| 3. PLANTER BACKFILL MIX S-2: 90% SAND 10% AXIS                    | 8. STRUCTURAL DECK              |
| 4. PLANTER BACKFILL MIX S-3: 100% MEDIUM COURSE SAND              | 9. WATERPROOFING, SEE ARCH PLAN |
| 5. PALM TREE TRUNK  |                                 |
- 9 PALM TREE OVER STRUCTURE**  
SCALE: NTS



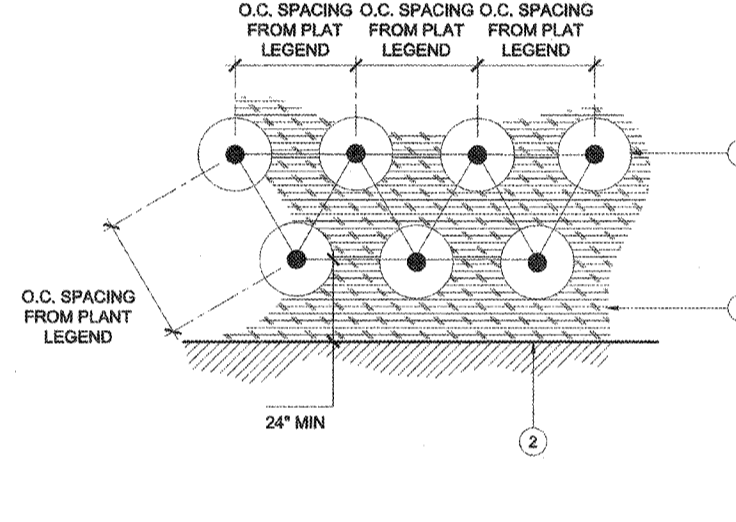
- LEGEND**
- |  |
|--|
| 1. PAVING EDGE OR HEADER.                                |
| 2. PLANTING AREA.  |
| 3. PLANT.  |
| 4. OUTER ROW OF PLANTS FOLLOWS EDGE OF PAVING OR HEADER. |
- 6 PLAN LAYOUT AT IRREGULAR AREAS**  
SCALE: NTS



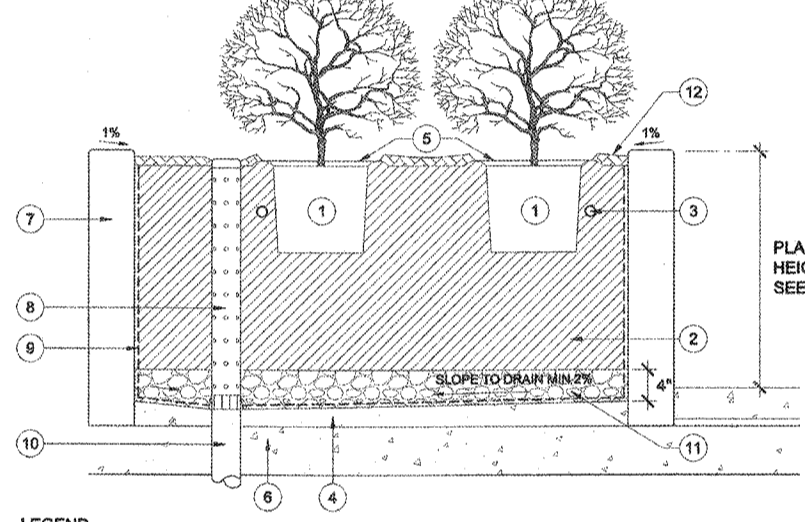
- LEGEND**
- |   |  |
|---|--|
| 1. ROOTBALL   | 9. WATER PROOFING, SEE ARCH DWGS         |
| 2. PLANTING SOIL. SEE SPECIFICATIONS                                | 10. PLANTER DRAINAGE, SEE PLUMBING DWGS. |
| 3. PLANT FERTILIZER TABLETS. SEE SPECIFICATIONS.                    | 11. 3/8" CRUSHED ROCK, SEE SPECIFICATION |
| 4. TOPPING SLAB, SEE ARCH DWGS                                      | 12. 3" THICK LAYER OF MULCH, SEE SPECS   |
| 5. WATERING BASIN   | 13. FILTER FABRIC                        |
| 6. STRUCTURAL SLAB, SEE STRUCTURE DWGS.                             |  |
| 7. PLANTER WALL, SEE ARCH DWGS.                                     |  |
| 8. PLANTER DRAIN ASSEMBLY: 4" DIA. PERFORATED P.V.C. RIGID DRAINAGE |  |
- 3 TREE OVER STRUCTURE**  
SCALE: NTS



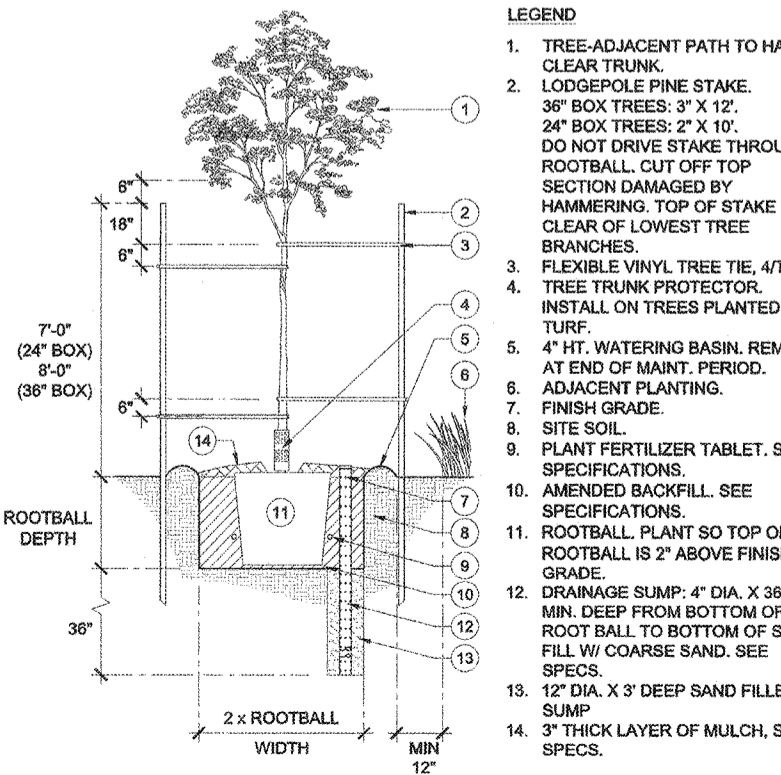
- LEGEND**
- |  |   |
|--|---|
| 1. ROOTBALL                                      | PERFORATED P.V.C. RIGID DRAINAGE PIPE WRAPPED IN DRAINAGE SOCK WITH 1/4" HOLES DRILLED THROUGH, SEE SPECIFICATION |
| 2. PLANTING SOIL. SEE SPECIFICATIONS             | 9. WATER PROOFING, SEE ARCH PLAN.   |
| 3. PLANT FERTILIZER TABLETS. SEE SPECIFICATIONS. | 10. PLANTER DRAINAGE, SEE PLUMBING PLAN.  |
| 4. TOPPING SLAB, SEE ARCH PLAN                   | 11. OVERFLOW DRAINAGE, SEE CIVIL PLAN   |
| 5. WATERING BASIN SEE 1/LP4.01                   | 12. 3/8" CRUSHED ROCK, SEE SPECIFICATION.   |
| 6. STRUCTURAL SLAB, SEE STRUCTURE PLAN           |   |
| 7. CMU PLANTER WALL, SEE CIVIL DWG               |   |
| 8. PLANTER DRAIN ASSEMBLY: 4" DIA.               |   |
- 8 SHRUB PLANTING IN SUSMP PLANTER**  
SCALE: NTS



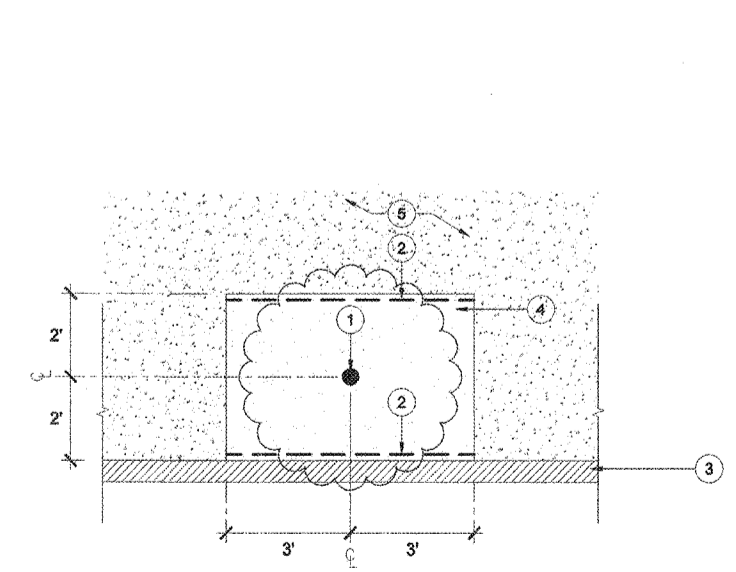
- LEGEND**
- |  |
|--|
| 1. SHRUB/GROUND COVER - TRIANGULATED ROWS.   |
| 2. HARDSCAPE ELEMENT: CURB, WALK, WALL, ETC.   |
| 3. MULCH PER SPECIFICATIONS.   |
| 4. SPACING DIAGRAM REFERS TO ALL SHRUBS AND GROUND COVER PLANTING UNLESS NOTED OTHERWISE |
- 5 GROUND COVER SPACING**  
SCALE: NTS



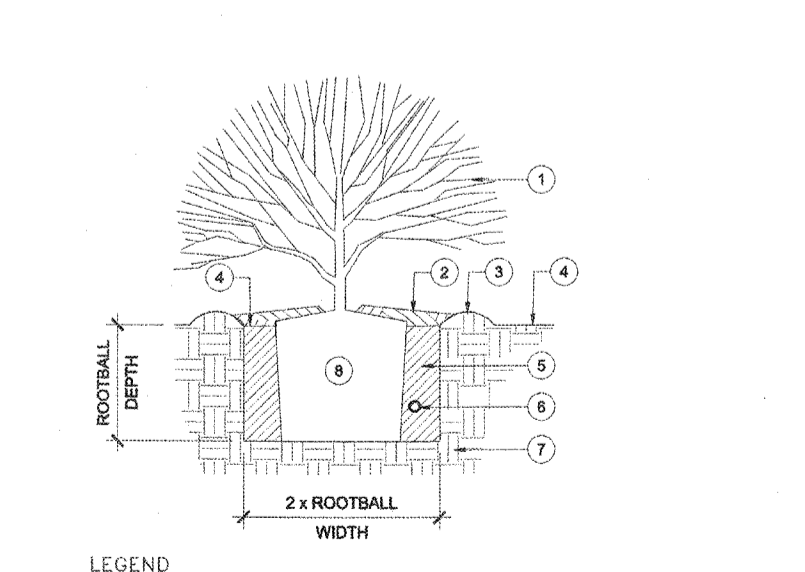
- LEGEND**
- |  |  |
|--|--|
| 1. ROOTBALL  | REMOVABLE THREADED P.V.C. CAP WITH (3) 1/4" HOLES DRILLED THROUGH, SEE SPECIFICATION |
| 2. PLANTING SOIL. SEE SPECIFICATIONS   | 9. WATER PROOFING, SEE ARCH PLAN.  |
| 3. PLANT FERTILIZER TABLETS. SEE SPECIFICATIONS.   | 10. PLANTER DRAINAGE, SEE PLUMBING PLAN.   |
| 4. TOPPING SLAB, SEE ARCH DWGS   | 11. 3/8" CRUSHED ROCK, SEE SPECIFICATION   |
| 5. WATERING BASIN  | 12. 3" THICK LAYER OF MULCH  |
| 6. STRUCTURAL SLAB, SEE STRUCTURE DWGS   |  |
| 7. PLANTER WALL, SEE ARCH DWGS   |  |
| 8. PLANTER DRAIN ASSEMBLY: 4" DIA. PERFORATED P.V.C. RIGID DRAINAGE PIPE WRAPPED IN DRAINAGE SOCK WITH |  |
- 2 SHRUB PLANTING OVER STRUCTURE**  
SCALE: NTS



- LEGEND**
- |   |
|---|
| 1. TREE-ADJACENT PATH TO HAVE 7' CLEAR TRUNK.   |
| 2. LODGEPOLE PINE STAKE. 36" BOX TREES: 3" X 12'. 24" BOX TREES: 2" X 10'. DO NOT DRIVE STAKE THROUGH ROOTBALL. CUT OFF TOP SECTION DAMAGED BY HAMMERING. TOP OF STAKE IS 6" CLEAR OF LOWEST TREE BRANCHES. |
| 3. FLEXIBLE VINYL TREE TIE, 4/TREE.   |
| 4. TREE TRUNK PROTECTOR. INSTALL ON TREES PLANTED IN TURF.  |
| 5. 4" HT. WATERING BASIN. REMOVE AT END OF MAINT. PERIOD.   |
| 6. ADJACENT PLANTING.   |
| 7. FINISH GRADE.  |
| 8. SITE SOIL.   |
| 9. PLANT FERTILIZER TABLET. SEE SPECIFICATIONS.   |
| 10. AMENDED BACKFILL. SEE SPECIFICATIONS.   |
| 11. ROOTBALL. PLANT SO TOP OF ROOTBALL IS 2" ABOVE FINISH GRADE.  |
| 12. DRAINAGE SUMP: 4" DIA. X 36" MIN. DEEP FROM BOTTOM OF ROOTBALL TO BOTTOM OF SUMP. FILL W/ COARSE SAND. SEE SPECS.   |
| 13. 12" DIA. X 3' DEEP SAND FILLED SUMP.  |
| 14. 3" THICK LAYER OF MULCH, SEE SPECS.   |
- 7 TREE PLANTING WITH DOUBLE SKATING**  
SCALE: NTS



- LEGEND**
- |  |
|--|
| 1. TREE TRUNK  |
| 2. 12 LF BOTH SIDE OF 18"-DEEP ROOT CONTROL BARRIER: DEEPROOT UB-18 OR EQUIVALENT. CENTER BARRIER ON TRUNK OF TREE. INSTALL PER MANUFACTURER'S SPECIFICATIONS. |
| 3. HARDSCAPE ELEMENT: CURB, SIDEWALK, WALL, ETC.   |
| 4. 4' X 8' PLANTING AREA WITH COMPACTED D.G. FINISH SURFACE  |
| 5. ADJACENT ENHANCED CONCRETE SIDEWALK - SEE PLANS   |
- 4 GROUND COVER SPACING**  
SCALE: NTS



- LEGEND**
- |   |
|---|
| 1. SHRUB.   |
| 2. MULCH. SEE SPECIFICATIONS.                     |
| 3. 3" HT WATERING BASIN.                          |
| 4. FINISH GRADE.                                  |
| 5. AMENDED BACKFILL. SEE SPECIFICATIONS.          |
| 6. FERTILIZER TABLET. SEE SPECIFICATIONS.         |
| 7. SITE SOIL.                                     |
| 8. ROOTBALL. SET TOP OF ROOTBALL 2" ABOVE FINISH. |
- 1 SHRUB PLANTING**  
SCALE: NTS