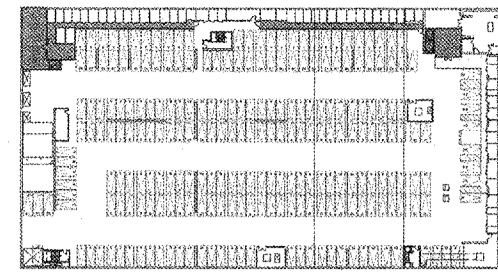
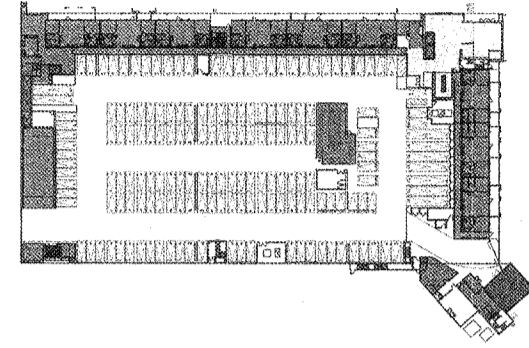


GROSS RESIDENTIAL FLOOR AREA SUMMARY

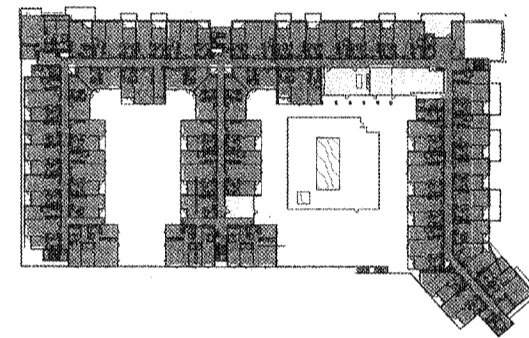


AREA GROSS BASEMENT
1" = 80'-0"

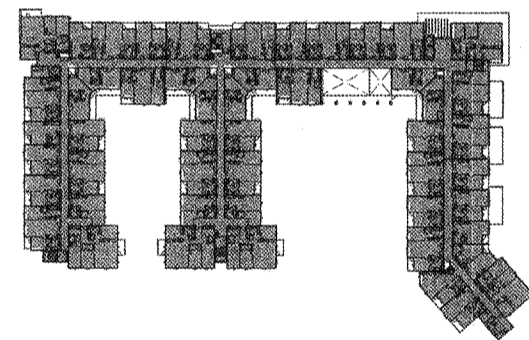
- INCLUDED IN GROSS AREA
- INCLUDED IN GROSS AREA
- INCLUDED IN GROSS AREA



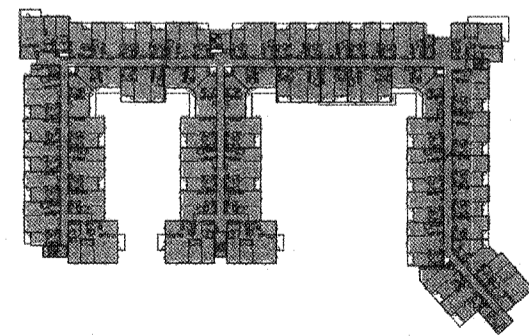
AREA GROSS 1ST STORY
1" = 80'-0"



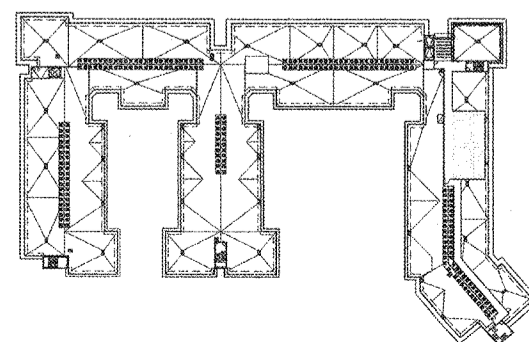
AREA GROSS 2ND STORY
1" = 80'-0"



AREA GROSS 3RD STORY
1" = 80'-0"



AREA GROSS 4TH & 5TH STORY
1" = 80'-0"

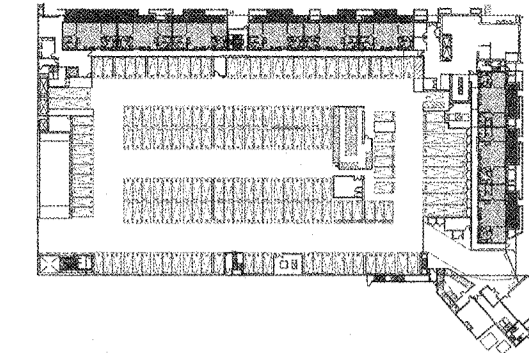


AREA GROSS ROOF
1" = 80'-0"

GROSS RESIDENTIAL FLOOR AREA SUMMARY

GROSS RESIDENTIAL AREA	
LEVEL	AREA
BASEMENT	4156 SF
1ST STORY	27065 SF
2ND STORY	58654 SF
3RD STORY	57820 SF
4TH STORY	59686 SF
5TH STORY	56464 SF
ROOF	1289 SF
TOTAL	288133 SF

UNIT MIX, PRIVATE OPEN SPACE AND AMENITIES

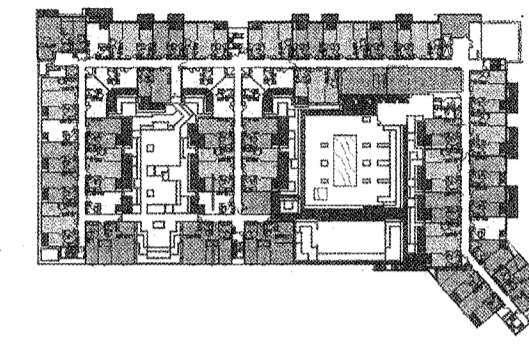


1ST STORY
1" = 80'-0"

- AMENITY
- STUDIO
- ONE BEDROOM
- TWO BEDROOM
- THREE BEDROOM
- UNIT DECK
- Calculating...

UNIT TYPE AND COUNT	
AREA USE	UNIT COUNT
TWO BEDROOM	9
1ST STORY	9

UNIT DECKS		
AREA USE	COUNT	AREA
UNIT DECK	9	3085 SF
1ST STORY	9	3085 SF

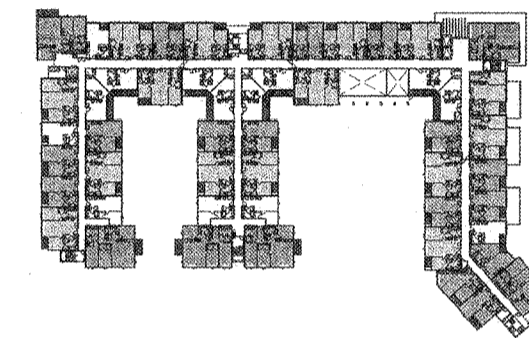


2ND STORY
1" = 80'-0"

UNIT TYPE AND COUNT	
AREA USE	UNIT COUNT
STUDIO	11
ONE BEDROOM	15
TWO BEDROOM	15
THREE BEDROOM	5
2ND STORY	47

UNIT DECKS		
AREA USE	COUNT	AREA
UNIT DECK	43	11397 SF
2ND STORY	43	11397 SF

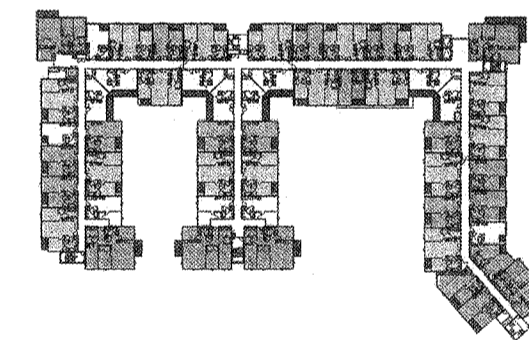
AMENITIES	
SPACE	AREA
CLUBHOUSE	1035 SF
FITNESS	1495 SF
ROOF DECK	530 SF
SCREENING ROOM	516 SF



3RD STORY
1" = 80'-0"

UNIT TYPE AND COUNT	
AREA USE	UNIT COUNT
STUDIO	14
ONE BEDROOM	15
TWO BEDROOM	15
THREE BEDROOM	6
3RD STORY	51

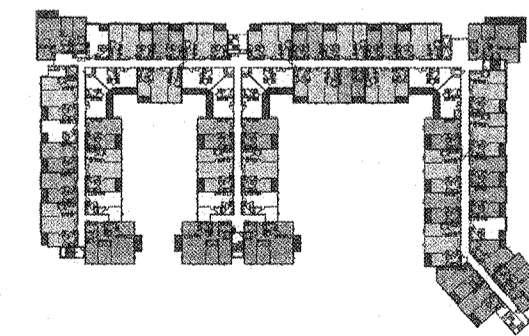
UNIT DECKS		
AREA USE	COUNT	AREA
UNIT DECK	46	3463 SF
3RD STORY	46	3463 SF



4TH STORY
1" = 80'-0"

UNIT TYPE AND COUNT	
AREA USE	UNIT COUNT
STUDIO	14
ONE BEDROOM	15
TWO BEDROOM	17
THREE BEDROOM	6
4TH STORY	53

UNIT DECKS		
AREA USE	COUNT	AREA
UNIT DECK	49	3649 SF
4TH STORY	49	3649 SF



5TH STORY
1" = 80'-0"

UNIT TYPE AND COUNT	
AREA USE	UNIT COUNT
STUDIO	14
ONE BEDROOM	15
TWO BEDROOM	17
THREE BEDROOM	6
5TH STORY	53

UNIT DECKS		
AREA USE	COUNT	AREA
UNIT DECK	49	3856 SF
5TH STORY	49	3856 SF

City of Inglewood - Planning Division
Preliminary Review Only

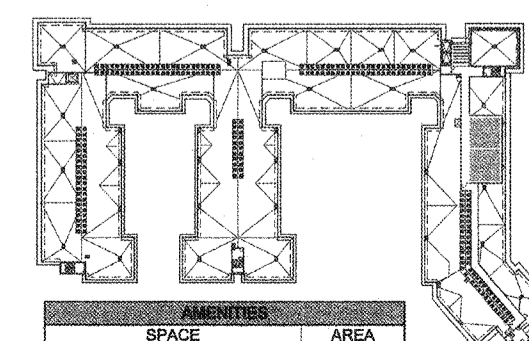
PLEASE RETURN THIS SET AND REVISED SET FOR NEXT REVIEW

REVIEW #	DATE	PLANNER
No. 1		
No. 2		
No. 3		

Address/APN: _____
Zoning/Overlay: _____

Other Info: _____

Please note that this plan has been reviewed based on the information provided by you, the applicant. A more in-depth review may result in a need for additional information or changes to your plan. This stamp acknowledges that we have reviewed your plan and we find that it complies with applicable codes and ordinances. Plans that have "NOT" been approved by the Planning Division and will require further review. See Specific Comments on plans (in red).



UNIT MIX ROOF
1" = 80'-0"

UNIT MIX SUMMARY

UNIT DECK SUMMARY		
AREA USE	COUNT	AREA
UNIT DECK	196	25648 SF
TOTAL	196	25648 SF

UNIT MIX			
UNIT CATEGORY	AVERAGE S.F.	UNIT COUNT	% UNIT MIX
STUDIO	650	53	25%
ONE BEDROOM	778	63	30%
TWO BEDROOM	1154	74	35%
THREE BEDROOM	1505	23	11%
TOTAL UNITS		213	

UNIT NET RENTABLE		
LEVEL	UNIT COUNT	AREA
1ST STORY	9	10650 SF
2ND STORY	47	44331 SF
3RD STORY	51	48277 SF
4TH STORY	53	50136 SF
5TH STORY	53	60136 SF
TOTAL	213	203641 SF



WILSON MEANY

HOLLYWOOD PARK RESIDENTIAL - MU-10

INGLEWOOD, CALIFORNIA
HOLLYWOOD PARK RETAIL AND
COMMERCIAL INVESTORS, LLC

AREA DIAGRAMS

NOT FOR CONSTRUCTION

THIS SET OF CONSTRUCTION DOCUMENTS HAS BEEN PREPARED FOR THE CONSTRUCTION OF AN APARTMENT PROJECT.

G.11

2017-083-02
JOB NUMBER
As Indicated
PLOT PLAN
RESUBMITTAL
08/21/2018
DATE