

**FIRST FLOOR RESIDENTIAL (R-2 OCCUPANCY)**  
 OCCUPANCY LOAD FACTOR 1/150  
 PER LABC TABLE 1004.1.2  
 DECK: 3,432 / 15 = 229 OCCUPANTS  
 POOL: 906 / 50 = 18 OCCUPANTS  
 SPA: 110 / 50 = 2 OCCUPANTS  
**TOTAL OCCUPANTS: 251 OCCUPANTS**  
 2 EXITS REQUIRED  
 3 EXITS PROVIDED

**COURTYARD A**  
 OCCUPANT LOAD FACTOR 1/15  
 PER LABC TABLE 1004.1.2  
 2578 / 15 = 172 OCCUPANTS  
 2 EXITS REQUIRED  
 3 EXITS PROVIDED

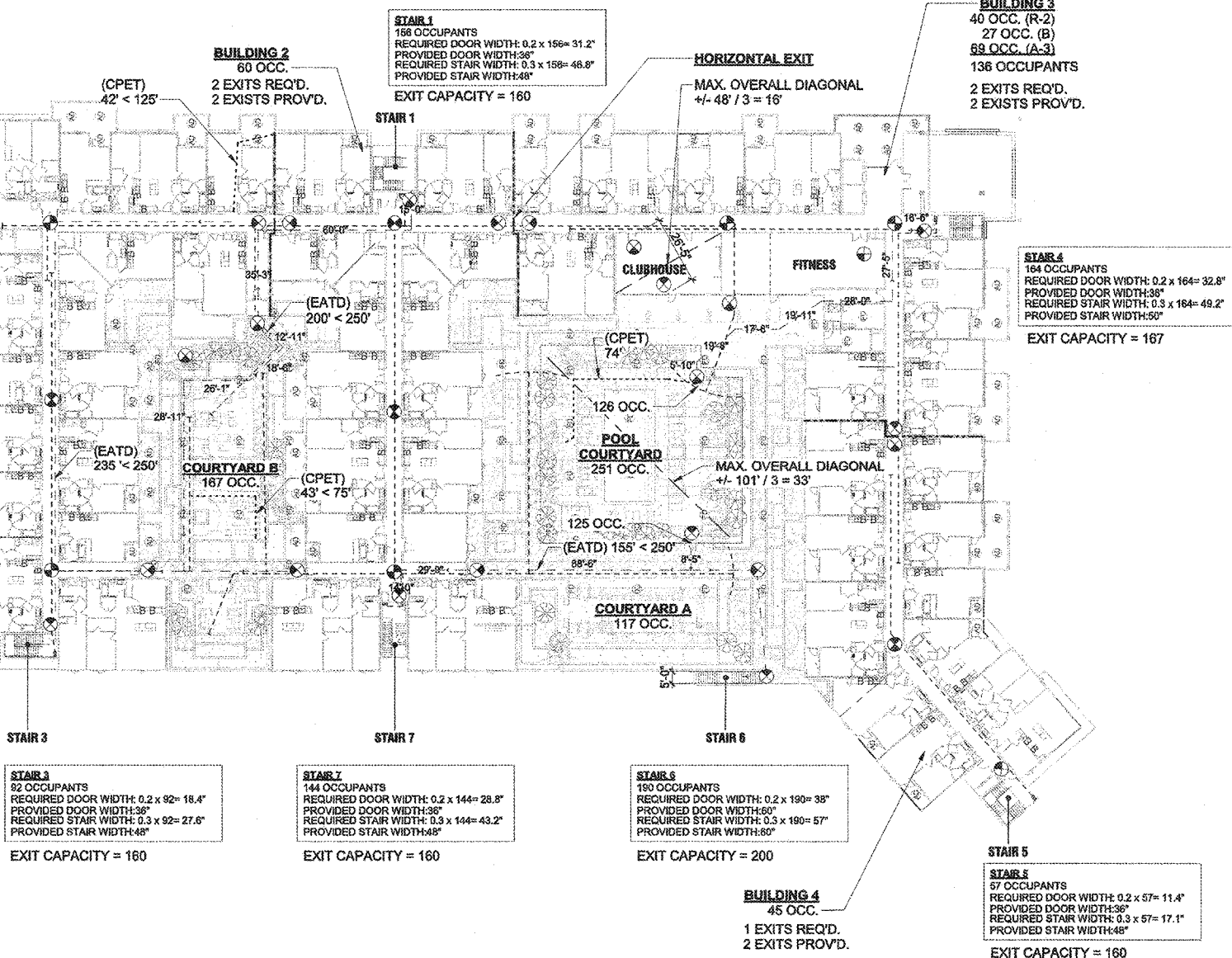
**COURTYARD B**  
 OCCUPANT LOAD FACTOR 1/15  
 PER LABC TABLE 1004.1.2  
 2497 / 15 = 167 OCCUPANTS  
 2 EXITS REQUIRED  
 2 EXITS PROVIDED

**SECOND FLOOR RESIDENTIAL (R-2 OCCUPANCY)**  
 OCCUPANCY LOAD FACTOR 1/200  
 PER CBC TABLE 1004.1.2  
 43237 / 200 = 217 OCCUPANTS  
 2 EXITS REQUIRED  
 2 EXITS PROVIDED

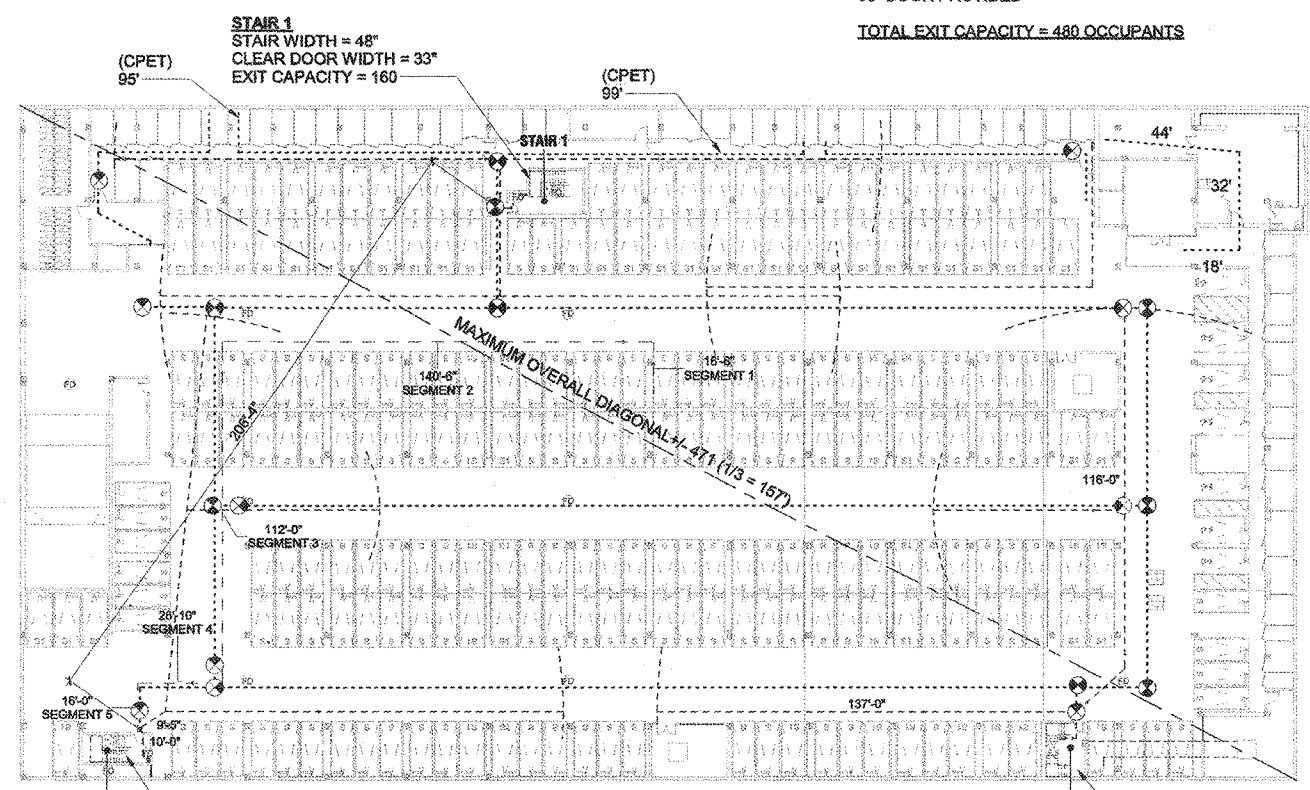
**SECOND FLOOR EXITING:**  
 910 OCCUPANTS  
 3 EXITS REQUIRED  
 6 EXITS PROVIDED  
 910 OCC. / 6 STAIRS = 151 OCC. PER STAIR  
 151 x 0.3 = 45.3" MIN. STAIR WIDTH  
 151 x 0.2 = 30.2" MIN. DOOR SIZE  
 48" STAIR WIDTH PROVIDED  
 36" DOOR PROVIDED  
**TOTAL EXIT CAPACITY = 1007 OCCUPANTS**

**BUILDING 3**  
 40 OCC. (R-2)  
 27 OCC. (B)  
 68 OCC. (A-3)  
 136 OCCUPANTS  
 2 EXITS REQ'D.  
 2 EXITS PROVIDED.

**STAIR 4**  
 164 OCCUPANTS  
 REQUIRED DOOR WIDTH: 0.2 x 164 = 32.8"  
 PROVIDED DOOR WIDTH: 36"  
 REQUIRED STAIR WIDTH: 0.3 x 164 = 49.2"  
 PROVIDED STAIR WIDTH: 50"  
**EXIT CAPACITY = 167**



3 EXITING PLAN - STORY 2  
 1" = 30'-0"



1 EXITING PLAN - BASEMENT 1  
 1" = 30'-0"

**FIRST FLOOR RESIDENTIAL (R-2 OCCUPANCY)**  
 OCCUPANCY LOAD FACTOR 1/200  
 PER CBC TABLE 1004.1.2  
 7140 / 200 = 36 OCCUPANTS  
 2 EXITS REQUIRED  
 2 EXITS PROVIDED  
 36" DOOR PROVIDED

**PARKING GARAGE (S-2 OCCUPANCY)**  
 OCCUPANCY LOAD FACTOR 1/200  
 PER CBC TABLE 1004.1.2  
 9168 / 200 = 46 OCCUPANTS  
 2 EXITS REQUIRED  
 2 EXITS PROVIDED  
 36" DOOR PROVIDED

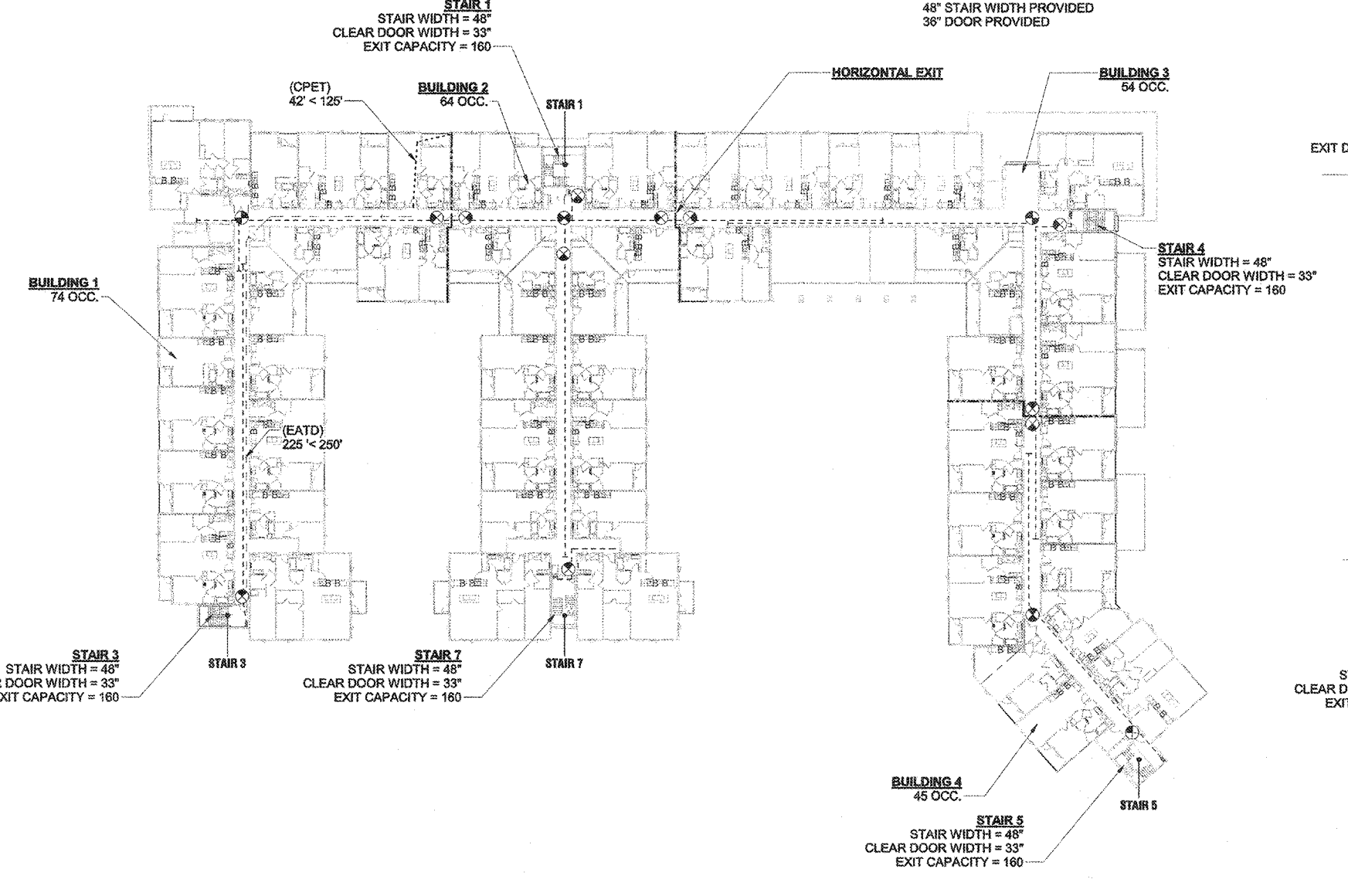
**FIRST FLOOR RESIDENTIAL (R-2 OCCUPANCY)**  
 OCCUPANCY LOAD FACTOR 1/200  
 PER CBC TABLE 1004.1.2  
 3570 / 200 = 18 OCCUPANTS  
 2 EXITS REQUIRED  
 1 EXIT PROVIDED  
 36" DOOR PROVIDED

**LEASING / LOBBY (B OCCUPANCY)**  
 OCCUPANCY LOAD FACTOR 1/100  
 PER CBC TABLE 1004.1.2  
 3538 / 100 = 36 OCCUPANTS  
 1 EXIT REQUIRED  
 1 EXIT PROVIDED  
 72" DOOR PROVIDED

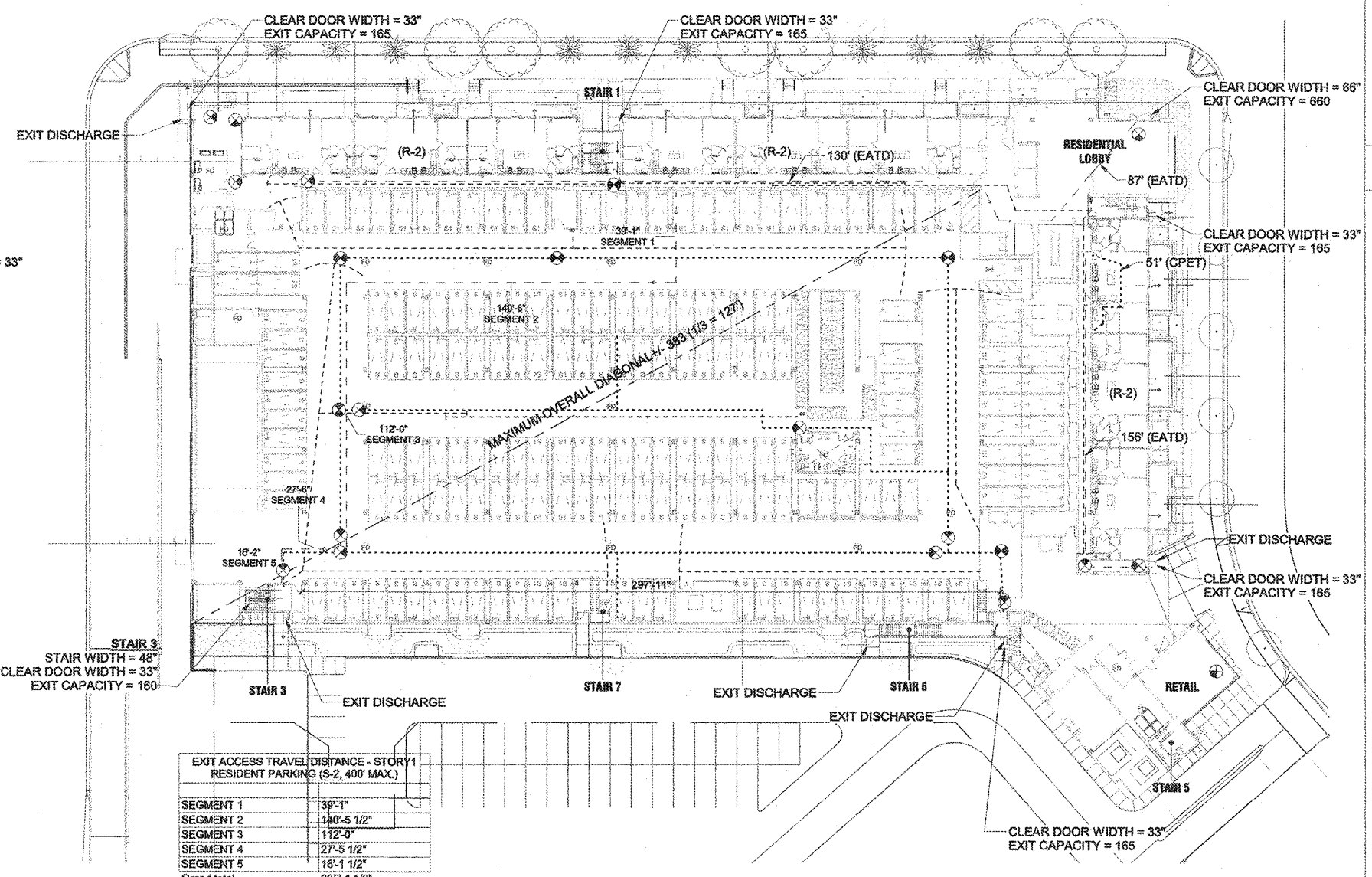
**RETAIL (M OCCUPANCY)**  
 OCCUPANCY LOAD FACTOR 1/60  
 PER CBC TABLE 1004.1.2  
 1000 / 60 = 17 OCCUPANTS  
 1 EXIT REQUIRED  
 1 EXIT PROVIDED  
 72" DOOR PROVIDED

**THIRD FLOOR RESIDENTIAL (R-2 OCCUPANCY)**  
 OCCUPANCY LOAD FACTOR 1/200  
 PER CBC TABLE 1004.1.2  
 47238 / 200 = 237 OCCUPANTS  
 2 EXITS REQUIRED  
 5 EXITS PROVIDED  
**TOTAL EXIT CAPACITY = 800 OCCUPANTS**

**THIRD FLOOR EXITING:**  
 247 OCC. / 5 STAIRS = 49 OCC. PER STAIR  
 48 x 0.3 = 15" MIN. STAIR WIDTH  
 48 x 0.2 = 10" MIN. DOOR SIZE  
 48" STAIR WIDTH PROVIDED  
 36" DOOR PROVIDED



4 EXITING PLAN - STORY 3  
 1" = 30'-0"



2 EXITING PLAN - STORY 1  
 1" = 30'-0"

**CODE NOTES**

- SEE SHEET G.10 FOR APPLICABLE GENERAL NOTES.
- SEE SHEET COVER SHEET FOR SYMBOLS & ABBREVIATIONS.
- DOOR SHALL SWING IN THE DIRECTION OF EGRESS TRAVEL WHERE SERVING AN OCCUPANT LOAD OF 50 OR MORE PERSONS.
- PROVIDE HIGH LEVEL EXIT SIGNS CENTERED ON CEILING PORTALS, UNLESS DIRECTED OTHERWISE BY INSPECTOR OR OWNER.
- BUILDING IS EQUIPPED WITH AUTOMATIC SPRINKLER SYSTEM IN ACCORDANCE WITH NFPA 13. THE SEPARATION DISTANCE BETWEEN 2 EXIT DOORS OR EXIT ACCESS DOORS SHALL BE NOT LESS THAN ONE-THIRD OF THE LENGTH OF THE MAXIMUM OVERALL DIAGONAL DIMENSION OF THE AREA SERVED.

**STAIR MATRIX**

STAIR	STAIR ACCESS MATRIX						
	1	2	3	4	5	6	7
ROOF							
5							
4							
3							
2							
1							
B1							
STANDPIPE							

● STAIR ACCESS  
 ○ PASS THROUGH FLOOR, NO ACCESS

**LEGEND**

- COMMON PATH OF EGRESS TRAVEL (CPET)
- MAXIMUM DISTANCES (TABLE 1006.2.1):  
 GROUP R-2: 125 FT  
 GROUP S-2: 100 FT  
 GROUP B: 100 FT  
 GROUP A-3: 75 FT
- OVERALL DIAGONAL
- EXIT ACCESS TRAVEL DISTANCE (EATD) BETWEEN EXITS:  
 MAXIMUM DISTANCES (TABLE 1017.2):  
 GROUP R-2: 250 FT  
 GROUP S-2: 400 FT  
 GROUP B: 300 FT  
 GROUP A-3: 250 FT
- 2 HOUR FIRE WALL
- EXIT POINT OF EGRESS
- WET STANDPIPE - CLASS I
- ILLUMINATED EXIT SIGN, TYP. PROVIDE REFLECTIVE EXIT SIGN 16" A.F.F.
- 150 FT. HOSE PULL TYP.



WILSON MEANY ARCHITECTS

HOLLYWOOD PARK RESIDENTIAL - MU-10  
 INGLEWOOD, CALIFORNIA  
 HOLLYWOOD PARK RETAIL AND COMMERCIAL INVESTORS, LLC

CODE ANALYSIS - EXITING PLANS - STORY B1-STORY 3  
 NOT FOR CONSTRUCTION

**G.20**

2017-083-02  
 JOB NUMBER  
 As Issued  
 PLOT PLAN SUBMITTAL  
 06/21/2016  
 REVISION DATE