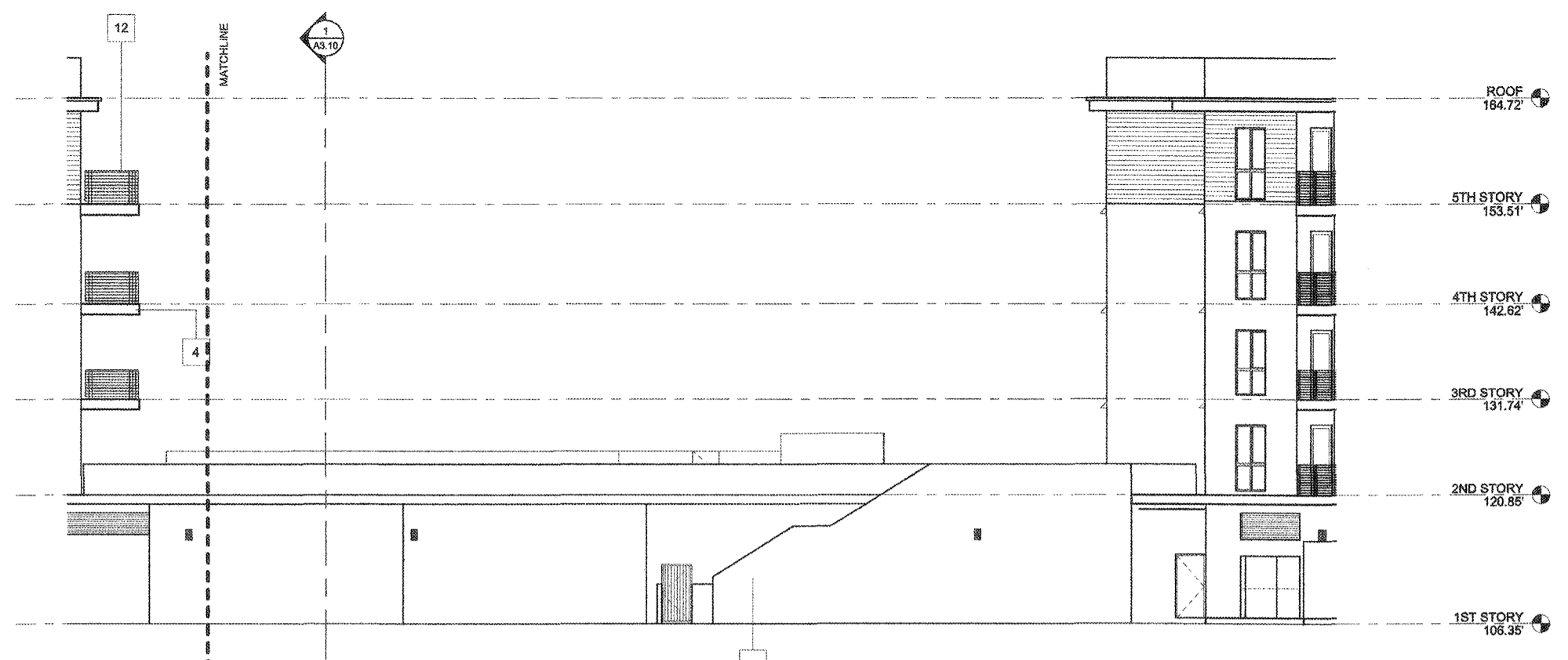




1 SOUTH WEST ELEVATION
1/8" = 1'-0"



2 SOUTH ELEVATION
1/8" = 1'-0"



3 SOUTH ELEVATION
1/8" = 1'-0"

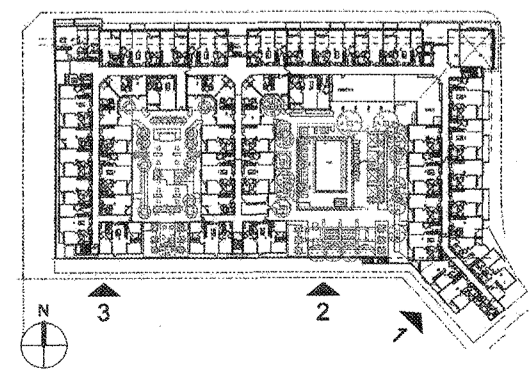
NOTES

1. ALL ILLUMINATION WILL BE CONFINED TO THE SITE AND WILL NOT CAUSE ANY GLARE TO ADJACENT PROPERTIES.
2. ALL SIGNAGE WILL BE UNDER A SEPARATE PERMIT.
3. INTERIOR NOISE LEVELS ATTRIBUTABLE TO EXTERIOR NOISE WILL NOT EXCEED 45 DECIBELS IN ANY HABITABLE ROOM.
4. SEE SHEET AS.20 FOR WINDOW SCHEDULE, AND ACOUSTICAL REQUIREMENT.

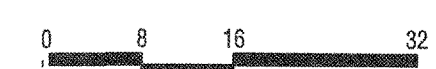
MATERIAL KEYNOTES

- 1 EXTERIOR STUCCO WALL - 20 / 30 SAND FINISH
- 2 STO EXTERIOR PLASTER - LIMESTONE FINISH
- 3 LIMESTONE - LIMOUX VENEER - COMBED FINISH
- 4 METAL FASCIA PANEL - POWDER COAT
- 5 ALUMINUM CANOPY - POWDER COAT
- 6 NOT USED
- 7 METAL SCREEN WALL - POWDER COAT
- 8 ALUMINUM SHADE STRUCTURE - POWDER COAT
- 9 METAL & GLASS GATE w/ FIXED SIDE LIGHT
- 10 VINYL WINDOWS - COLOR TBD
- 11 ALUMINUM STOREFRONT WINDOWS - ANNOZIDED ALUMINUM
- 12 HORIZONTAL METAL GUARD RAIL - PAINT
- 13 CEMENT FIBER BOARD SIDING - ARTISAN V-RUSTIC
- 14 ALUMINUM GUTTER - POWDER COAT

KEY PLAN



City of Inglewood - Planning Division
Preliminary Review Only
"PLEASE RETURN THIS SET AND REVISED SET FOR NEXT REVIEW"
REVIEW # DATE PLAN #
No. 1
No. 2
No. 3
Address/APN:
Zoning/Overlay:
Other Info:
Please note that this plan has been reviewed based on the information provided by you, the applicant. A minor in-depth review may result in a need for additional information or changes to your plan. The stamp acknowledges that we have reviewed your plan and we find that it requires additional information or corrections. These plans have "NOT" been approved by the Planning Division and will require further review. See Specific Comments on plans (in red).



HOLLYWOOD PARK RESIDENTIAL - MU-10
INGLEWOOD, CALIFORNIA
HOLLYWOOD PARK RETAIL AND
COMMERCIAL INVESTORS, LLC

EXTERIOR ELEVATIONS

NOT FOR CONSTRUCTION

THIS SET OF CONSTRUCTION DOCUMENTS HAS BEEN PREPARED FOR THE CONSTRUCTION OF AN APARTMENT PROJECT.
A2.13
2017-089-02
JOB NUMBER
As Indicated
PLOT PLAN
RESUBMITTAL
06/21/2018
DATE