

1 COURTYARD B - A
1/8" = 1'-0"



2 COURTYARD B - B
1/8" = 1'-0"



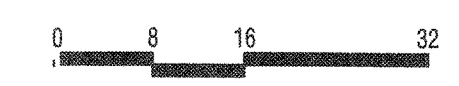
3 COURTYARD B - C
1/8" = 1'-0"

City of Inglewood - Planning Division
Preliminary Review Only
"PLEASE RETURN THIS SET AND REVISED SET FOR NEXT REVIEW"

REVIEW #	DATE	PLANNER
No. 1		
No. 2		
No. 3		

Address/APN:
Zoning/Overlay:
Other info:

Please note that this plan has been reviewed based on the information provided by you, the applicant. It does not constitute a guarantee of accuracy or a warranty of any kind. It is your responsibility to ensure that all information is current and accurate. The City of Inglewood does not warrant the accuracy of the information provided. These plans have "NOT" been approved by the Planning Division and will require further review. See Specific Comments on plans for details.



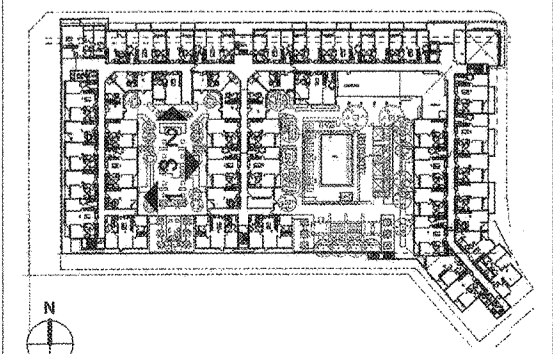
MATERIAL KEYNOTES

- 1 EXTERIOR STUCCO WALL - 20 / 30 SAND FINISH
- 2 STO EXTERIOR PLASTER - LIMESTONE FINISH
- 3 LIMESTONE - LIMOUX VENEER - COMBED FINISH
- 4 METAL FASCIA PANEL - POWDER COAT
- 5 ALUMINUM CANOPY - POWDER COAT
- 6 NOT USED
- 7 METAL SCREEN WALL - POWDER COAT
- 8 ALUMINUM SHADE STRUCTURE - POWDER COAT
- 9 METAL & GLASS GATE w/ FIXED SIDE LIGHT
- 10 VINYL WINDOWS - COLOR TBD
- 11 ALUMINUM STOREFRONT WINDOWS - ANNOXIDIZED ALUMINUM
- 12 HORIZONTAL METAL GUARD RAIL - PAINT
- 13 CEMENT FIBER BOARD SIDING - ARTISAN V-RUSTIC
- 14 ALUMINUM GUTTER - POWDER COAT

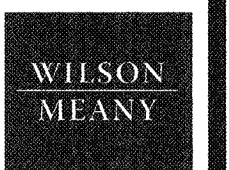
NOTES

1. ALL ILLUMINATION WILL BE CONFINED TO THE SITE AND WILL NOT CAUSE ANY GLARE TO ADJACENT PROPERTIES.
2. ALL SIGNAGE WILL BE UNDER A SEPARATE PERMIT.
3. INTERIOR NOISE LEVELS ATTRIBUTABLE TO EXTERIOR NOISE WILL NOT EXCEED 45 DECIBELS IN ANY HABITABLE ROOM.
4. SEE SHEET AS.20 FOR WINDOW SCHEDULE, AND ACOUSTICAL REQUIREMENT.

KEY PLAN



LOS ANGELES | BEVERLY HILLS | CHARLESTON
This document is the property of T&A Architects, Inc. and shall remain the confidential property of T&A Architects, Inc. and shall not be reproduced or transmitted in any form or by any means electronic, mechanical, photocopying, recording, or by any information storage and retrieval system without the prior written permission of T&A Architects, Inc.



HOLLYWOOD PARK RESIDENTIAL - MU-10
INGLEWOOD, CALIFORNIA
HOLLYWOOD PARK RETAIL AND COMMERCIAL INVESTORS, LLC

COURTYARD ELEVATIONS
NOT FOR CONSTRUCTION

THIS SET OF CONSTRUCTION DOCUMENTS HAS BEEN PREPARED FOR THE CONSTRUCTION OF AN APARTMENT PROJECT.
A2.15
2017-083-02
As Indicated
SCALE
PLOT PLAN
RESUBMITTAL
08/21/2018
ISSUE DATE