

NOTES

INTERIOR NOISE LEVELS ATTRIBUTABLE TO EXTERIOR NOISE WILL NOT EXCEED 45 DECIBELS IN ANY HABITABLE ROOM.

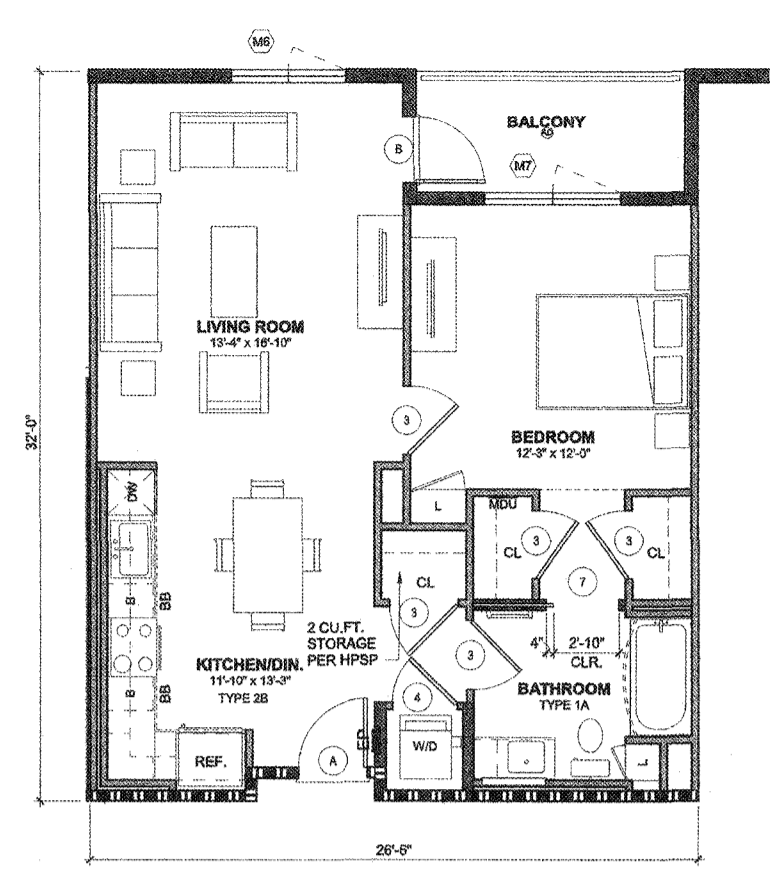


WILSON MEANY

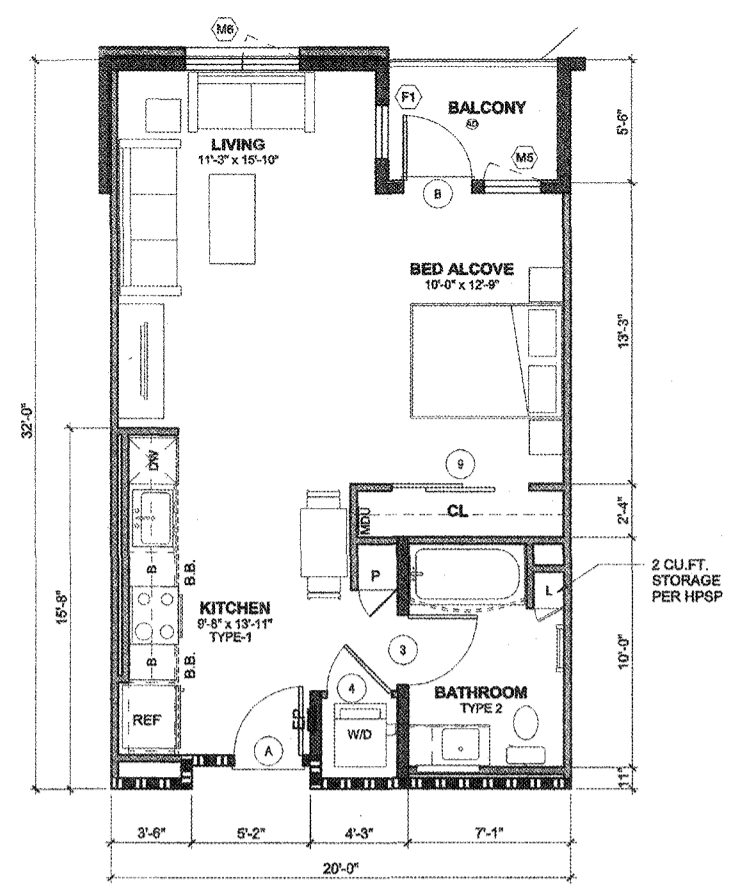
HOLLYWOOD PARK RESIDENTIAL - MU-10
INGLEWOOD, CALIFORNIA
HOLLYWOOD PARK RETAIL AND COMMERCIAL INVESTORS, LLC

UNIT PLANS
NOT FOR CONSTRUCTION

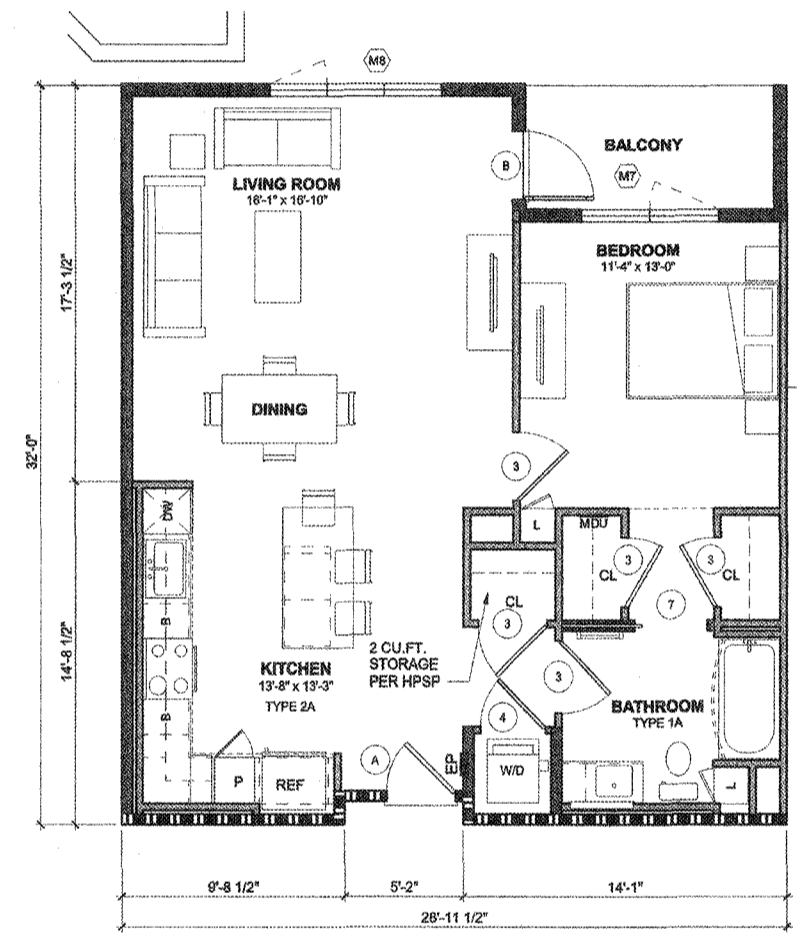
THIS SET OF CONSTRUCTION DOCUMENTS HAS BEEN PREPARED FOR THE CONSTRUCTION OF AN APARTMENT PROJECT.
A4.01*
2017-08-02
As Indicated
PLOT PLAN
RESUBMITTAL
08/21/2016



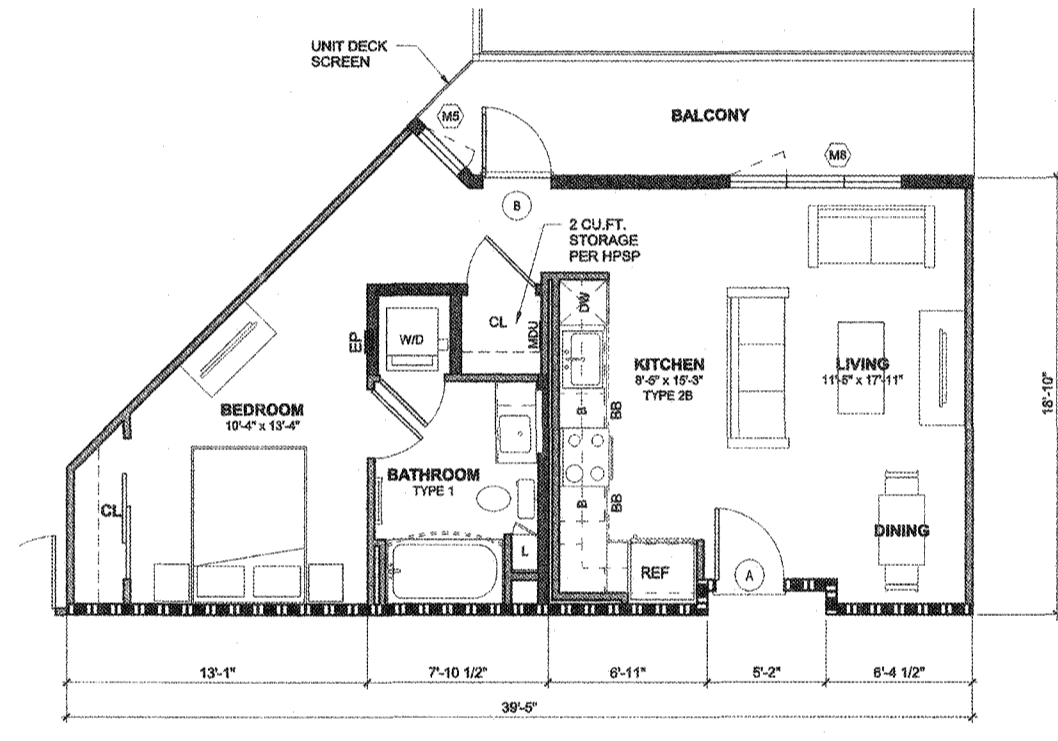
4 UNIT A1 - FLOOR PLAN
1/4" = 1'-0"



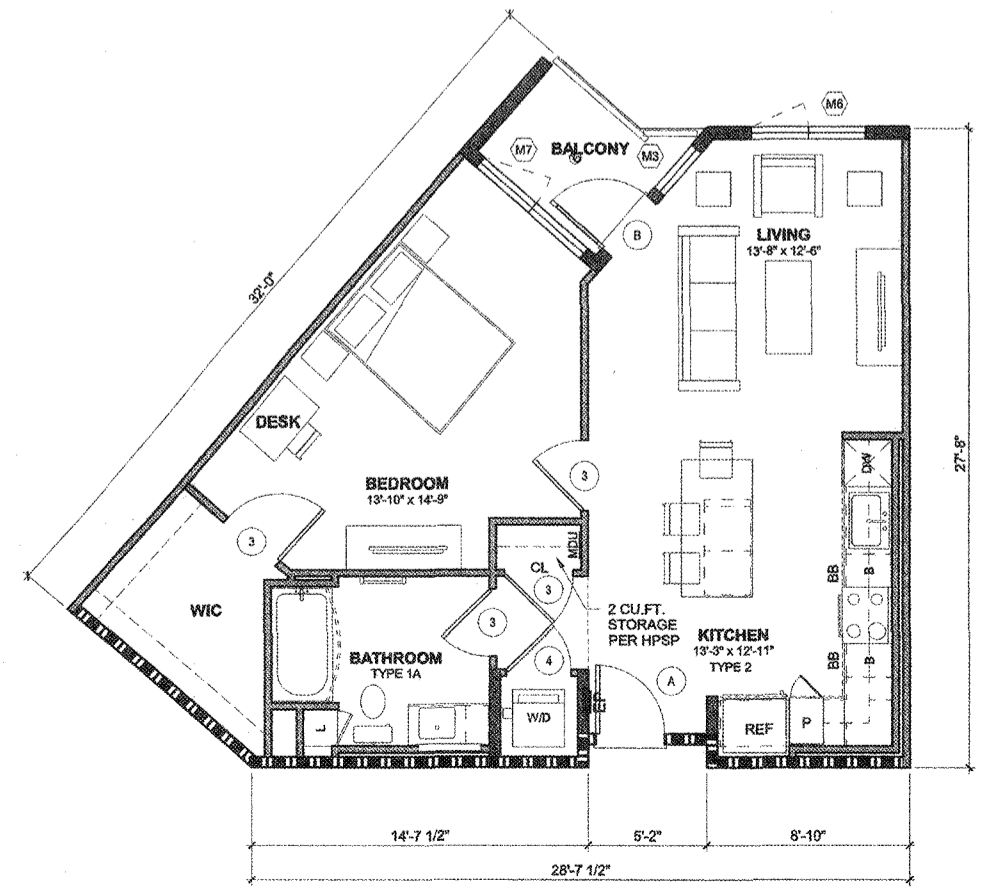
1 UNIT S1 - FLOOR PLAN
1/4" = 1'-0"



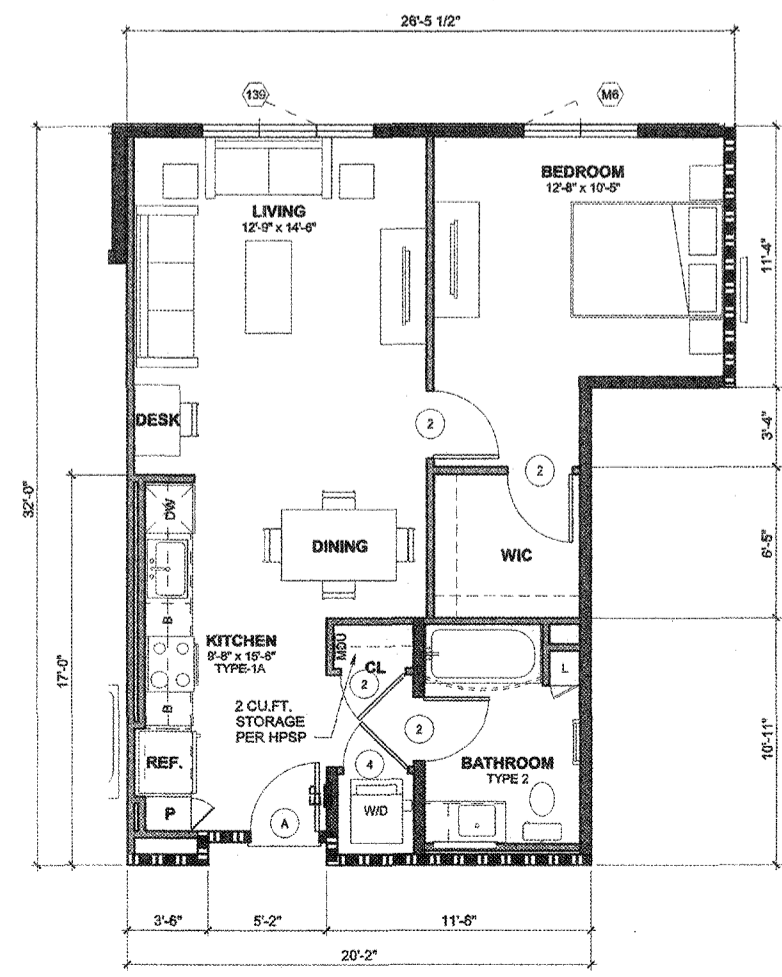
5 UNIT A2 - FLOOR PLAN
1/4" = 1'-0"



2 UNIT S2 - JR STUDIO - FLOOR PLAN
1/4" = 1'-0"



6 UNIT A3 - FLOOR PLAN
1/4" = 1'-0"



3 UNIT S3 - FLOOR PLAN
1/4" = 1'-0"

DOOR SCHEDULE

MARK	TYPE	WIDTH	HEIGHT	MAT.	F.R.	REMARKS
1	A	2'-6"	6'-8"	WD	NR	FLUSH SOLID
2	A	2'-10"	6'-8"	WD	NR	FLUSH SOLID
3	A	3'-0"	6'-8"	WD	NR	FLUSH SOLID
4	C	2'-10"	6'-8"	WD	NR	FULL LOUVER
5	A-PR	5'-0"	6'-8"	WD	NR	FLUSH SOLID
6	A-PR	6'-0"	6'-8"	WD	NR	FLUSH SOLID
7	E	3'-2"	6'-8"	WD	NR	POCKET DOOR, 34" CLR.
8	D	6'-0"	6'-8"	WD	NR	FLUSH, BI-PASS CLOSET
9	D	6'-0"	6'-8"	WD	NR	FLUSH, BI-PASS CLOSET
11	F	4'-6"	7'-0"	WD	NR	BARN DOOR
13	A	3'-0"	7'-0"	WD	20M	UNIT ENTRY, WITH PEEP HOLE, SMOKE SEAL, STC 30
B	B	3'-0"	6'-8"	FG	NR	FRENCH DOOR, FULL LIGHT, STC 28, 32, 34, 37
C	B	3'-0"	6'-8"	FG	NR	FRENCH DOOR, FULL LIGHT, STC 28, 32, 34, 37
E	H	3'-0"	6'-0"	ALUM.	NR	STOREFRONT SYSTEM, STC 32, 34
E	H	3'-0"	9'-7 1/2"	ALUM.	NR	STOREFRONT SYSTEM, STC 32, 34
F	H	3'-0"	9'-6"	ALUM.	NR	STOREFRONT SYSTEM, STC 32, 34

City of Inglewood - Planning Division
Preliminary Review Only
PLEASE RETURN THIS SET AND REVISED SET FOR NEXT REVIEW
REVIEW # _____ DATE _____ PLANNER _____
No. 1 _____
No. 2 _____
No. 3 _____
Address/APN: _____
Zoning/Overlay: _____
Other Info: _____
Please note that this plan has been reviewed based on the information provided by you. The applicant is responsible for providing accurate information. If you have any questions or need to make any changes to your plan, this stamp acknowledges that you have reviewed your plan and you find that it requires additional information or corrections. These plans have "NOT" been approved by the Planning Division and will require further review. See Specific Comments on plans (if any).

