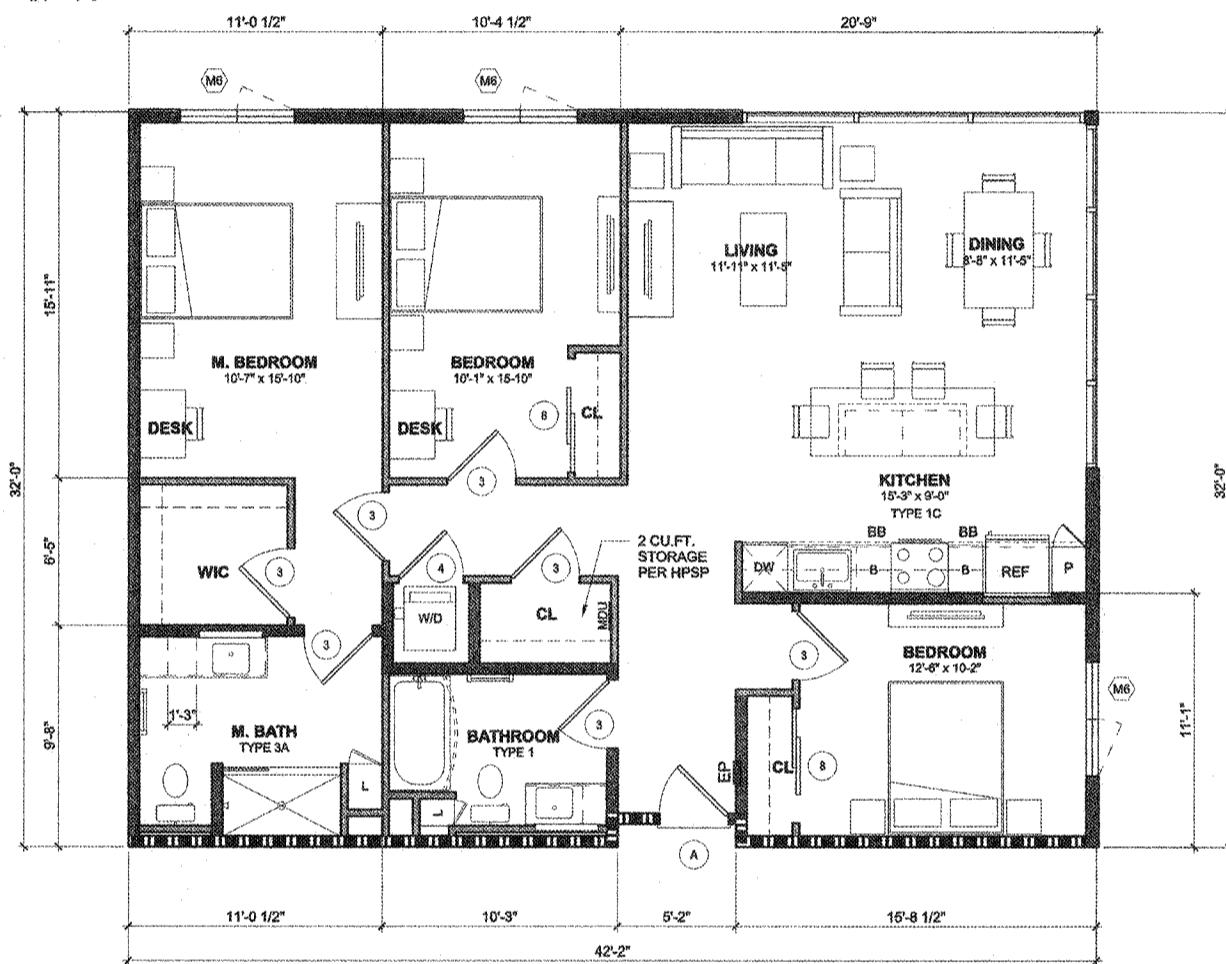
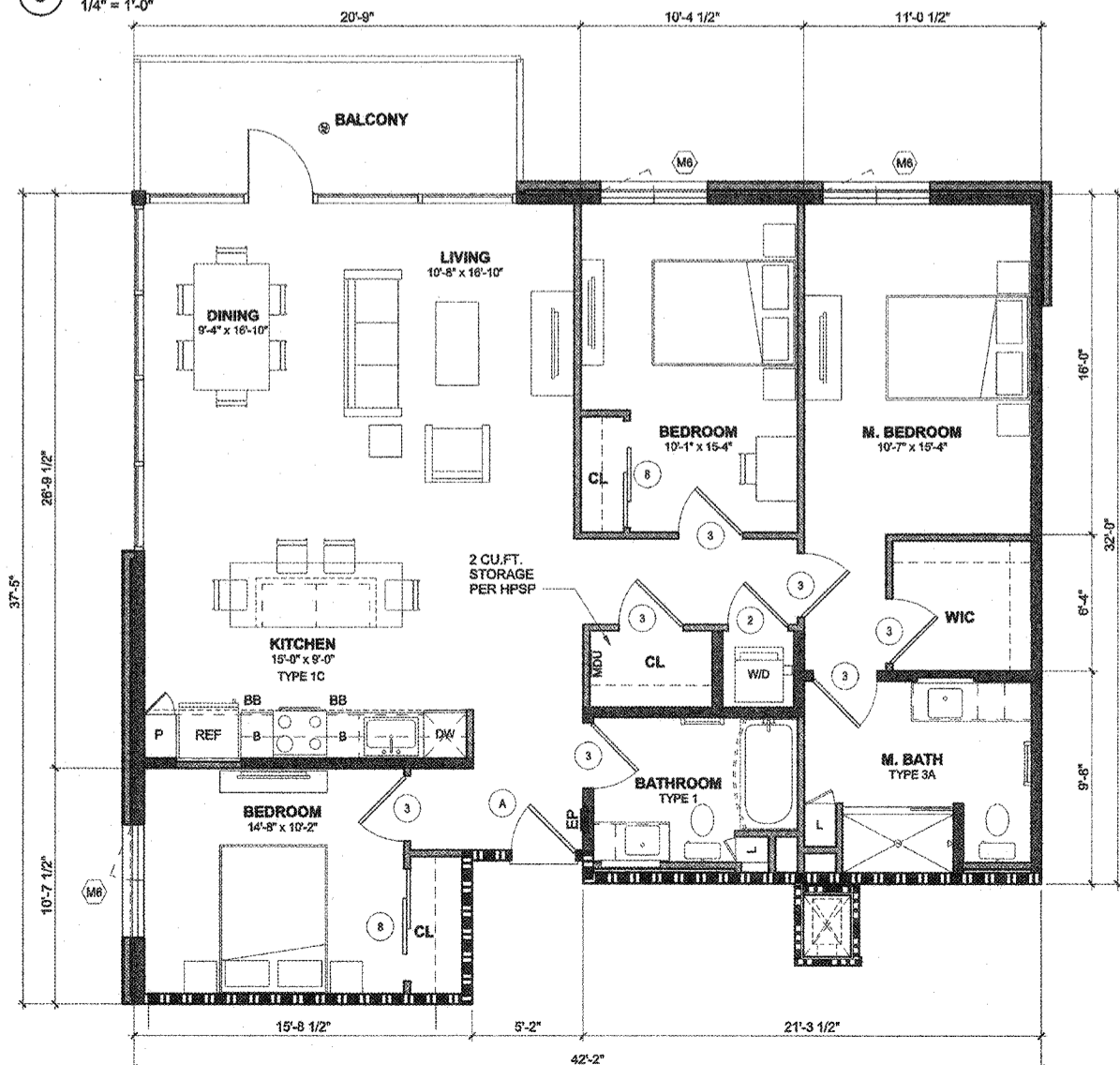


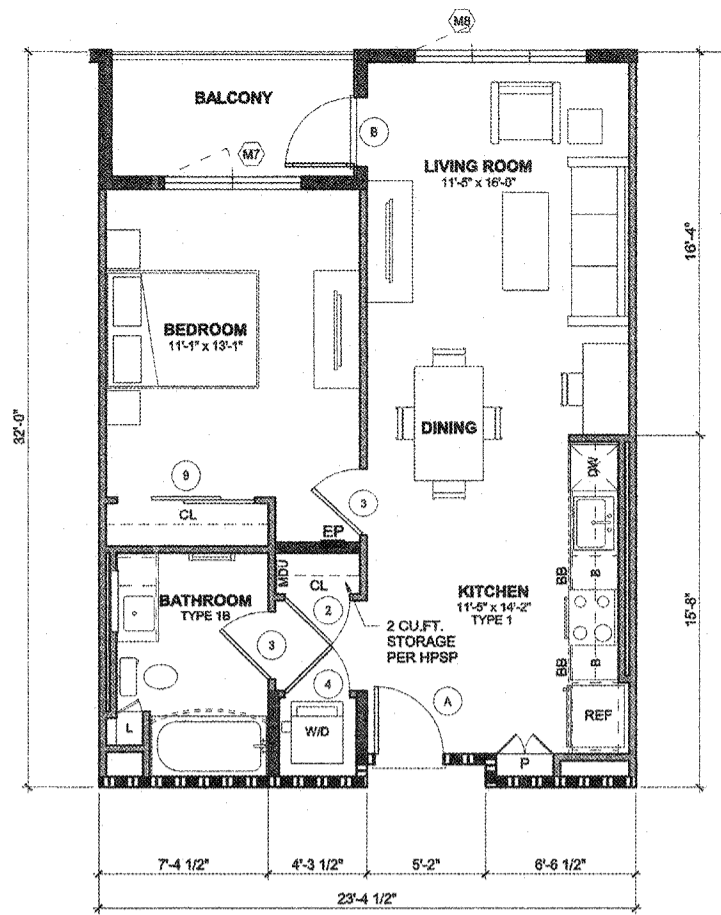
4 UNIT B2 - GARDEN - FLOOR PLAN
1/4" = 1'-0"



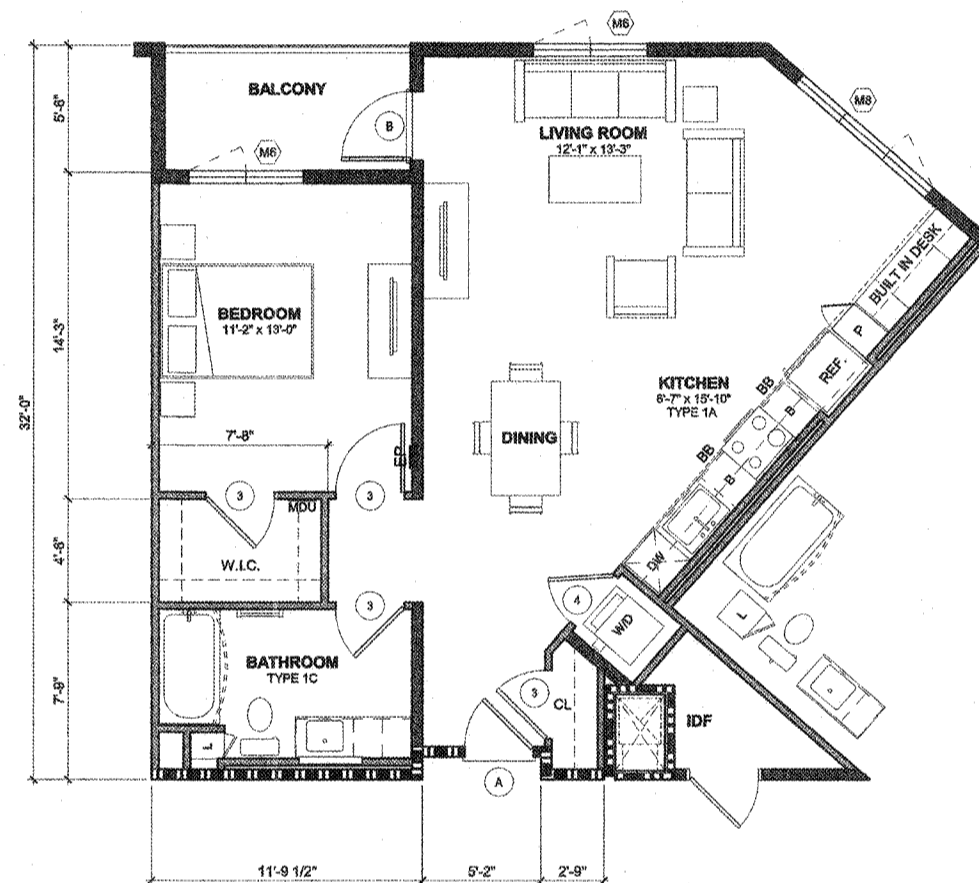
5 UNIT C2 - FLOOR PLAN
1/4" = 1'-0"



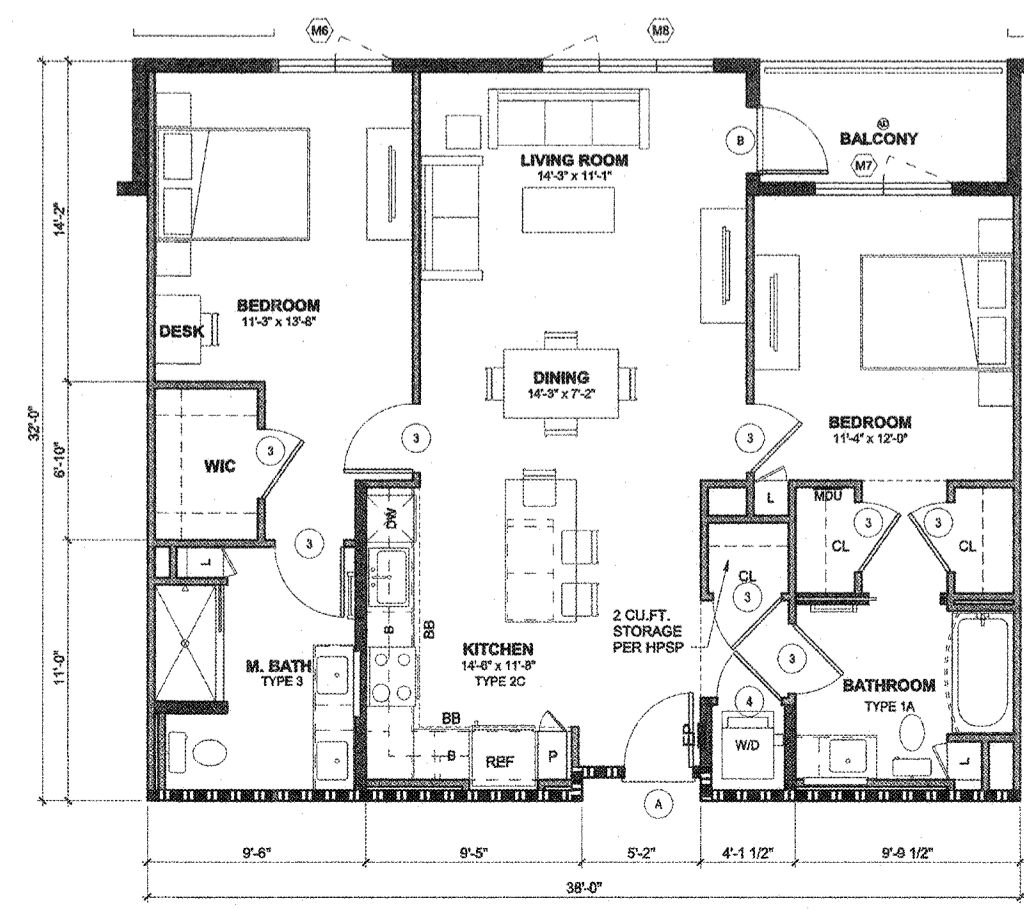
6 UNIT C2.1 - FLOOR PLAN
1/4" = 1'-0"



1 UNIT A4 - FLOOR PLAN
1/4" = 1'-0"



2 UNIT A5 - FLOOR PLAN
1/4" = 1'-0"



3 UNIT B1 - FLOOR PLAN
1/4" = 1'-0"

NOTES

INTERIOR NOISE LEVELS ATTRIBUTABLE TO EXTERIOR NOISE WILL NOT EXCEED 45 DECIBELS IN ANY HABITABLE ROOM.



LOS ANGELES | IRVINE | OAKLAND
THE REGISTERED PROFESSIONAL ARCHITECTS OF CALIFORNIA, INC.
60211 And use of this document without TCA ARCHITECTS & INTERIOR DESIGNERS, INC.

WILSON MEANY

HOLLYWOOD PARK RESIDENTIAL - MU-10
INGLEWOOD, CALIFORNIA
HOLLYWOOD PARK RETAIL AND COMMERCIAL INVESTORS, LLC

UNIT PLANS
NOT FOR CONSTRUCTION

City of Inglewood - Planning Division
Preliminary Review Only
"PLEASE RETURN THIS SET AND REVISED SET FOR NEXT REVIEW"
REVIEW # _____ DATE _____ PLANNER _____
No. 1 _____
No. 2 _____
No. 3 _____
Address/APN: _____
Zoning/Overlay: _____
Other Info: _____
Please note that this plan has been reviewed based on the information provided by you, the applicant. A more in-depth review may result in a need for additional information or changes to your plan. This stamp acknowledges that we have reviewed your plan and we find that it requires additional information for completion. These plans have "NDT" been approved by the Planning Division and will require further review. See Specific Comments on plans (if red).



THIS SET OF CONSTRUCTION DOCUMENTS HAS BEEN PREPARED FOR THE CONSTRUCTION OF AN APARTMENT PROJECT
A4.02*
2017-083-02
JOB NUMBER
As Indicated
DATE
PLOT PLAN
RESUBMITTAL
SHEET 14
08/21/2018
ISSUE DATE