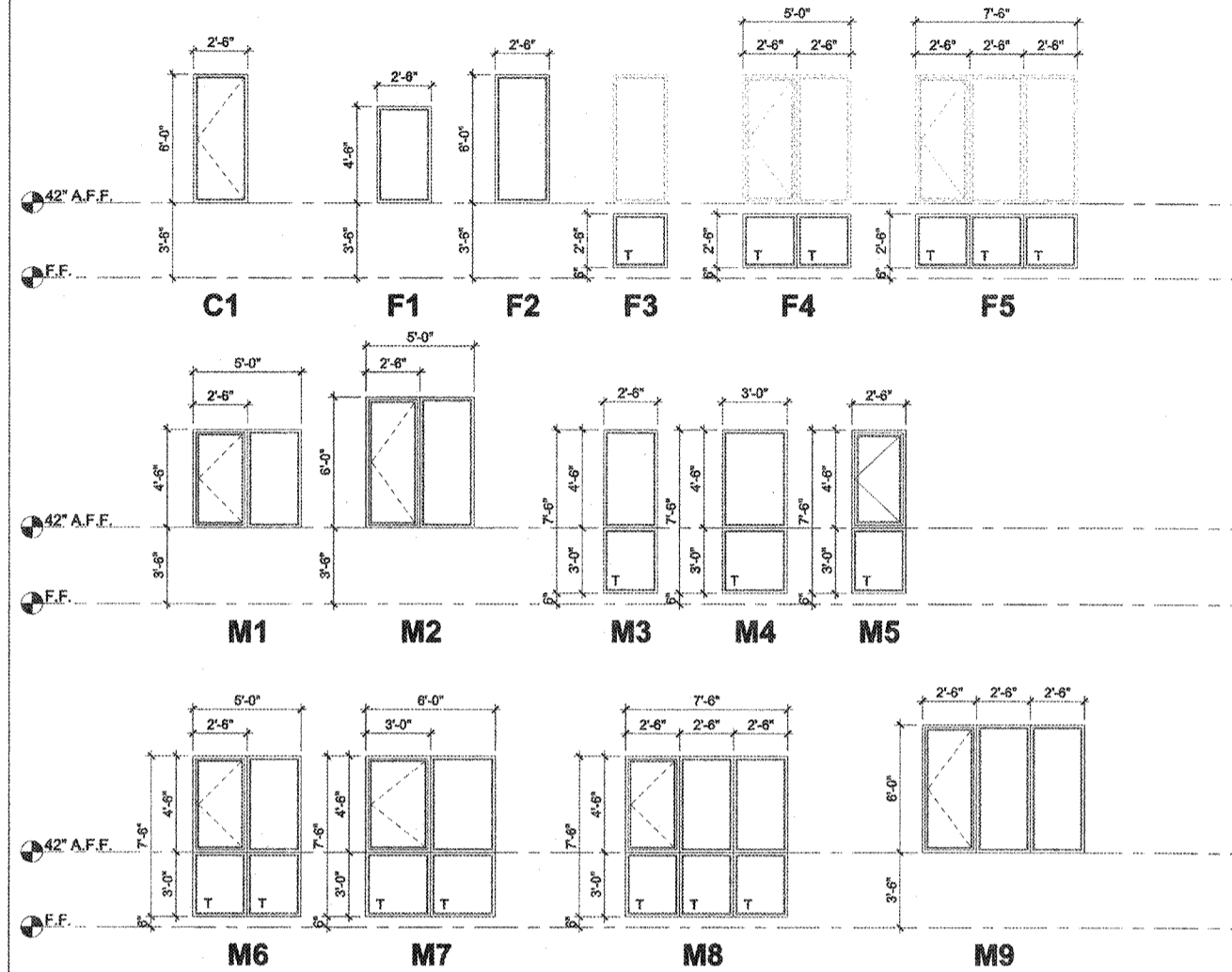


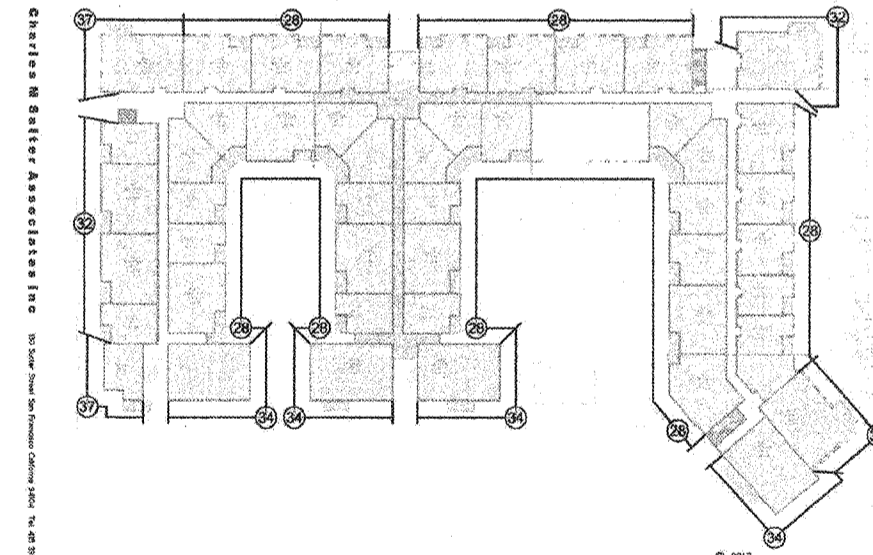
WINDOW LEGEND & SCHEDULE - RESIDENTIAL / COMMON AREA

WINDOW SCHEDULE				
Type Mark	W	H	FRAME	DESCRIPTION
139	7'-6"	7'-6"	VINYL	CASEMENT x FIXED x FIXED or FIXED x FIXED x FIXED
C2	2'-6"	6'-0"	VINYL	CASEMENT
F1	2'-6"	4'-6"	VINYL	FIXED
F2	2'-6"	6'-0"	VINYL	FIXED
F3	2'-6"	2'-6"	VINYL	FIXED
F4	5'-0"	2'-6"	VINYL	FIXED x FIXED
F5	7'-6"	2'-6"	VINYL	FIXED x FIXED x FIXED
M1	5'-0"	4'-6"	VINYL	CASEMENT x FIXED
M2	5'-0"	6'-0"	VINYL	CASEMENT x FIXED
M3	2'-6"	7'-6"	VINYL	FIXED or FIXED
M4	3'-0"	7'-6"	VINYL	FIXED or FIXED
M5	2'-6"	7'-6"	VINYL	CASEMENT or FIXED
M6	5'-0"	7'-6"	VINYL	CASEMENT x FIXED or FIXED x FIXED
M7	6'-0"	7'-6"	VINYL	CASEMENT x FIXED or FIXED x FIXED
M8	7'-6"	7'-6"	VINYL	CASEMENT x FIXED or FIXED x FIXED x FIXED
M9	7'-6"	6'-0"	VINYL	CASEMENT x FIXED x FIXED

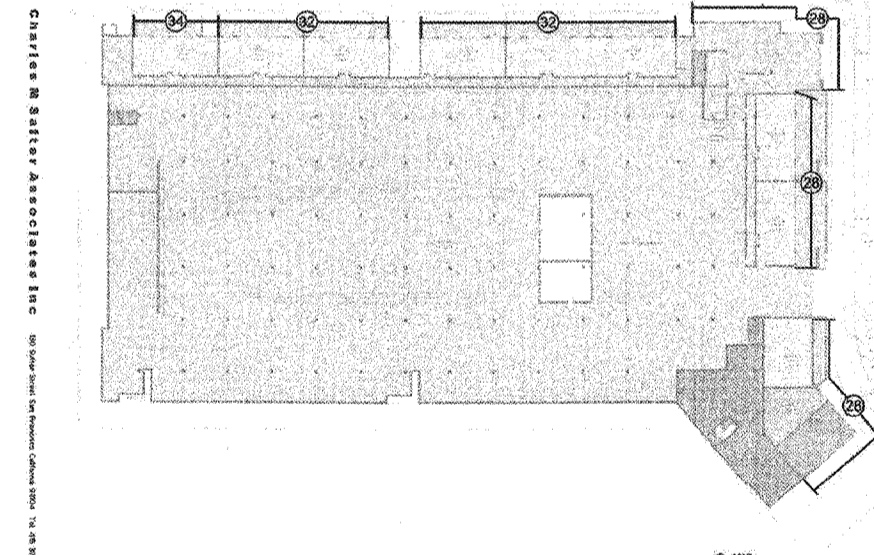
**TYPE LEGEND**  
 C = CASEMENT  
 F = FIXED  
 M = MULLED  
 T = TEMPERED GLASS



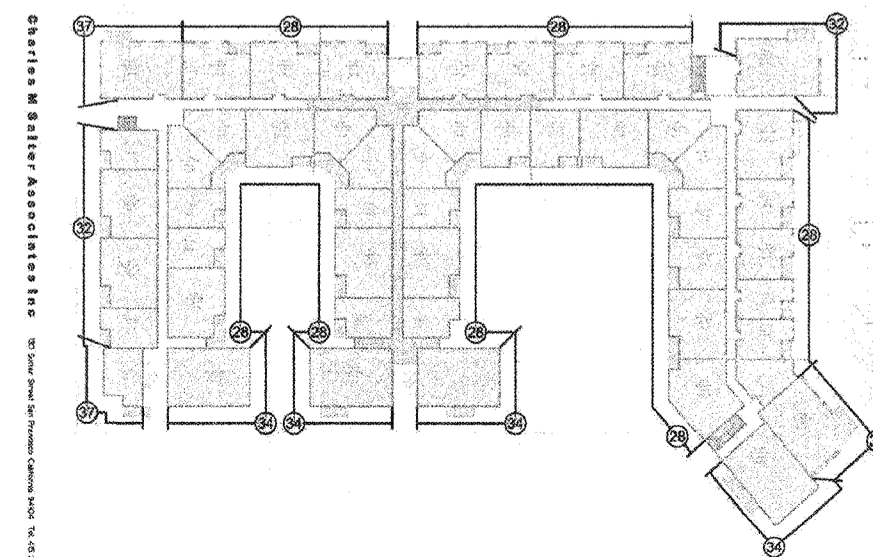
**ACOUSTICAL REPORT**  
 (MIN. RECOMMENDED STC RATINGS FOR WINDOWS AND EXTERIOR DOORS)



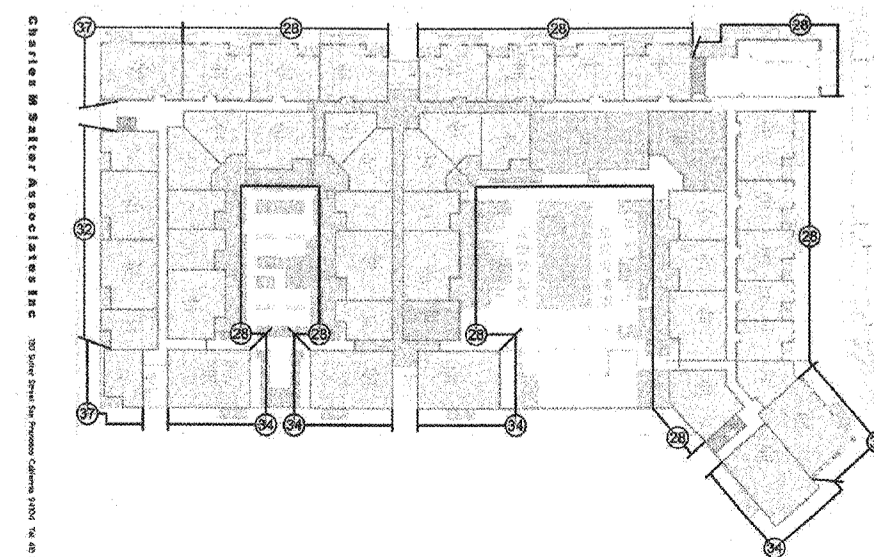
HOLLYWOOD PARK APARTMENTS, BLDG. MU-10  
 MINIMUM RECOMMENDED STC RATINGS FOR  
 WINDOWS AND EXTERIOR DOORS (LEVELS 3 AND 4)  
 FIGURE 4  
 Date: 17-2011  
 W/ETS 05.05.17



HOLLYWOOD PARK APARTMENTS, BLDG. MU-10  
 MINIMUM RECOMMENDED STC RATINGS FOR  
 WINDOWS AND EXTERIOR DOORS (LEVEL 1)  
 FIGURE 2  
 Date: 17-2011  
 W/ETS 05.05.17



HOLLYWOOD PARK APARTMENTS, BLDG. MU-10  
 MINIMUM RECOMMENDED STC RATINGS FOR  
 WINDOWS AND EXTERIOR DOORS (LEVEL 5)  
 FIGURE 5  
 Date: 17-2011  
 W/ETS 05.05.17



HOLLYWOOD PARK APARTMENTS, BLDG. MU-10  
 MINIMUM RECOMMENDED STC RATINGS FOR  
 WINDOWS AND EXTERIOR DOORS (LEVEL 2)  
 FIGURE 3  
 Date: 17-2011  
 W/ETS 05.05.17