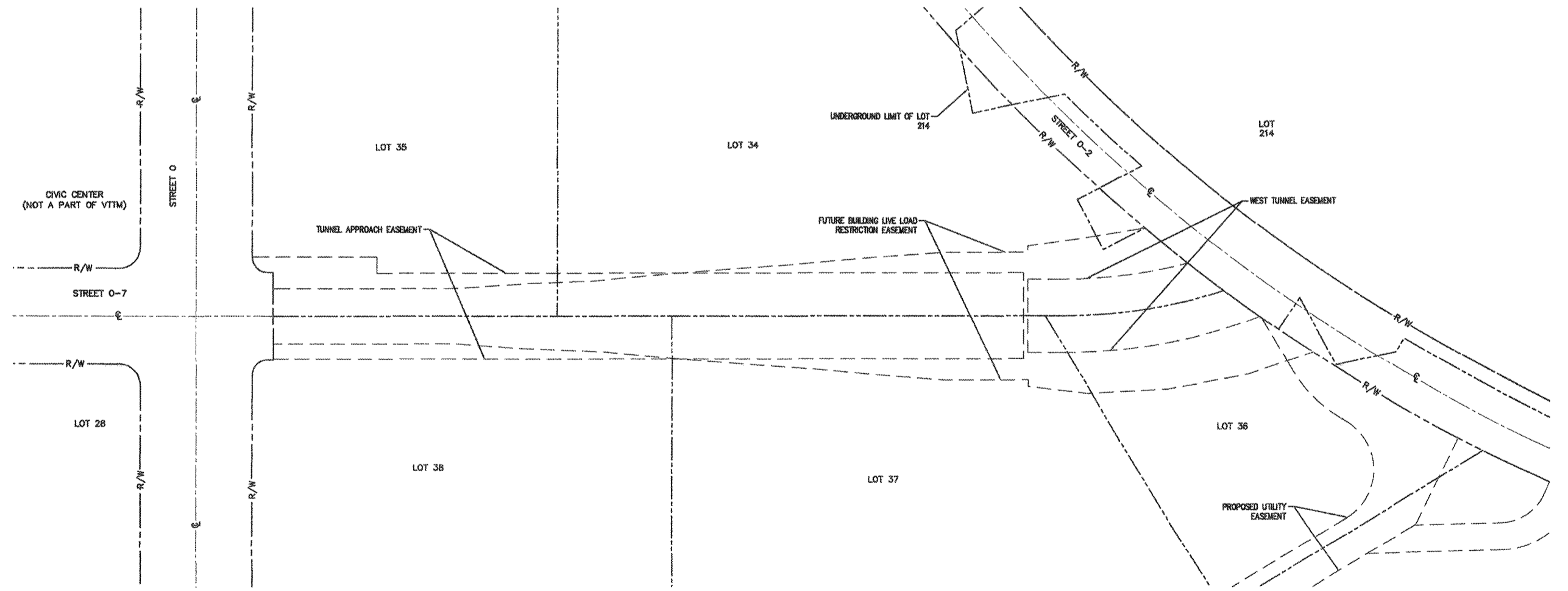


VESTING TENTATIVE TRACT MAP NO. 80314
 IN THE CITY OF INGLEWOOD, CA
 FOR MERGER, RESUBDIVISION AND CONDOMINIUM PURPOSES



03/07/18

	DAVID EVANS AND ASSOCIATES INC. 201 S. FIGUEROA STREET, SUITE 240 LOS ANGELES, CA 90012 Phone: 213.337.3880	HOLLYWOOD PARK LAND CO., LLC L.A. STADIUM AND ENTERTAINMENT DISTRICT AT HOLLYWOOD PARK	
		PREPARED UNDER THE SUPERVISION OF: KARL MALLOCK, R.C.E. 42529	DATE:
DRAWN BY: LR DESIGNED BY: KM CHECKED BY: KM	VESTING TENTATIVE TRACT MAP MAP NO. 80314 TUNNEL EASEMENTS	DATE: 03/07/18	SHEET NO.: 06 of 25

David Evans and Associates Inc. 11111 W. Century Blvd., Suite 200, Century City, CA 90045
 Copyright © 2018 David Evans and Associates Inc. All rights reserved.