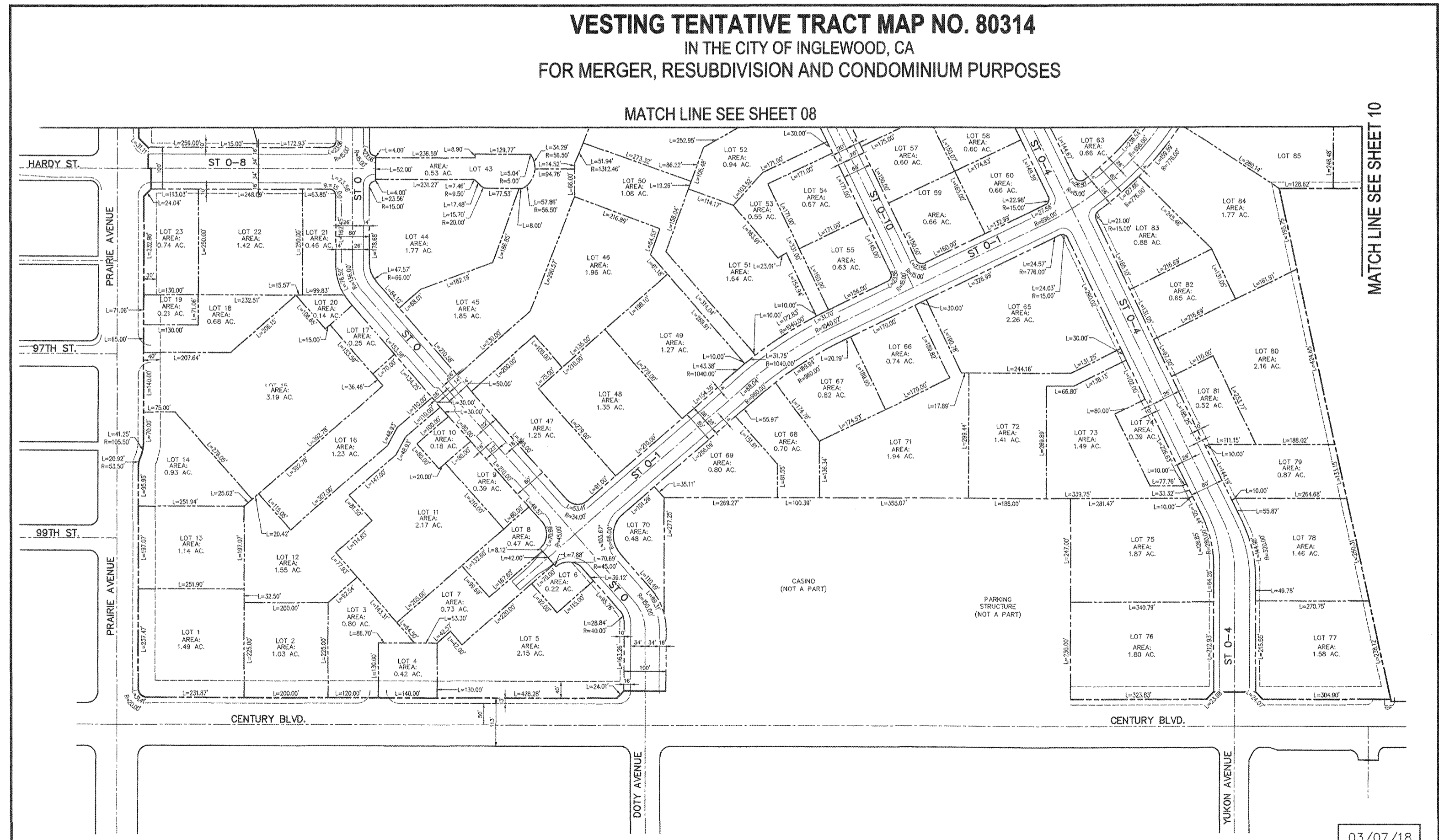


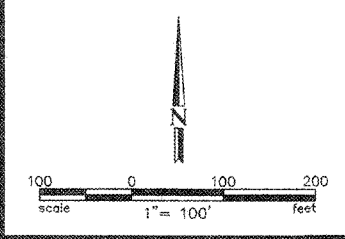
VESTING TENTATIVE TRACT MAP NO. 80314
 IN THE CITY OF INGLEWOOD, CA
 FOR MERGER, RESUBDIVISION AND CONDOMINIUM PURPOSES

MATCH LINE SEE SHEET 08

MATCH LINE SEE SHEET 10

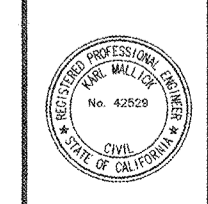


03/07/18



- LEGEND**
- EX. CURB
 - BOUNDARY/ ROW/ PROPERTY LINE
 - PROPOSED CURB
 - PROPOSED LOT LINE
 - CENTER LINE
 - TOP OF SLOPE
 - BOTTOM OF SLOPE

NOTE:
SEE SHEET 11 FOR CURVE AND LENGTH TABLES



DAVID EVANS AND ASSOCIATES INC.
 201 S. FIGUEROA STREET, SUITE 240
 LOS ANGELES, CA 90012
 Phone: 213.337.3890

PREPARED UNDER THE SUPERVISION OF:
 KARL MALLIK, R.C.E. 42529

HOLLYWOOD PARK LAND CO., LLC		L.A. STADIUM AND ENTERTAINMENT DISTRICT AT HOLLYWOOD PARK	
DATE:	03/07/18	SCALE:	N.T.S.
DESIGNED BY:	KM	PROJECT NO.:	80314
CHECKED BY:	KM	SHEET NO.:	07 OF 25
APPROVED BY:		CITY ENGINEER:	