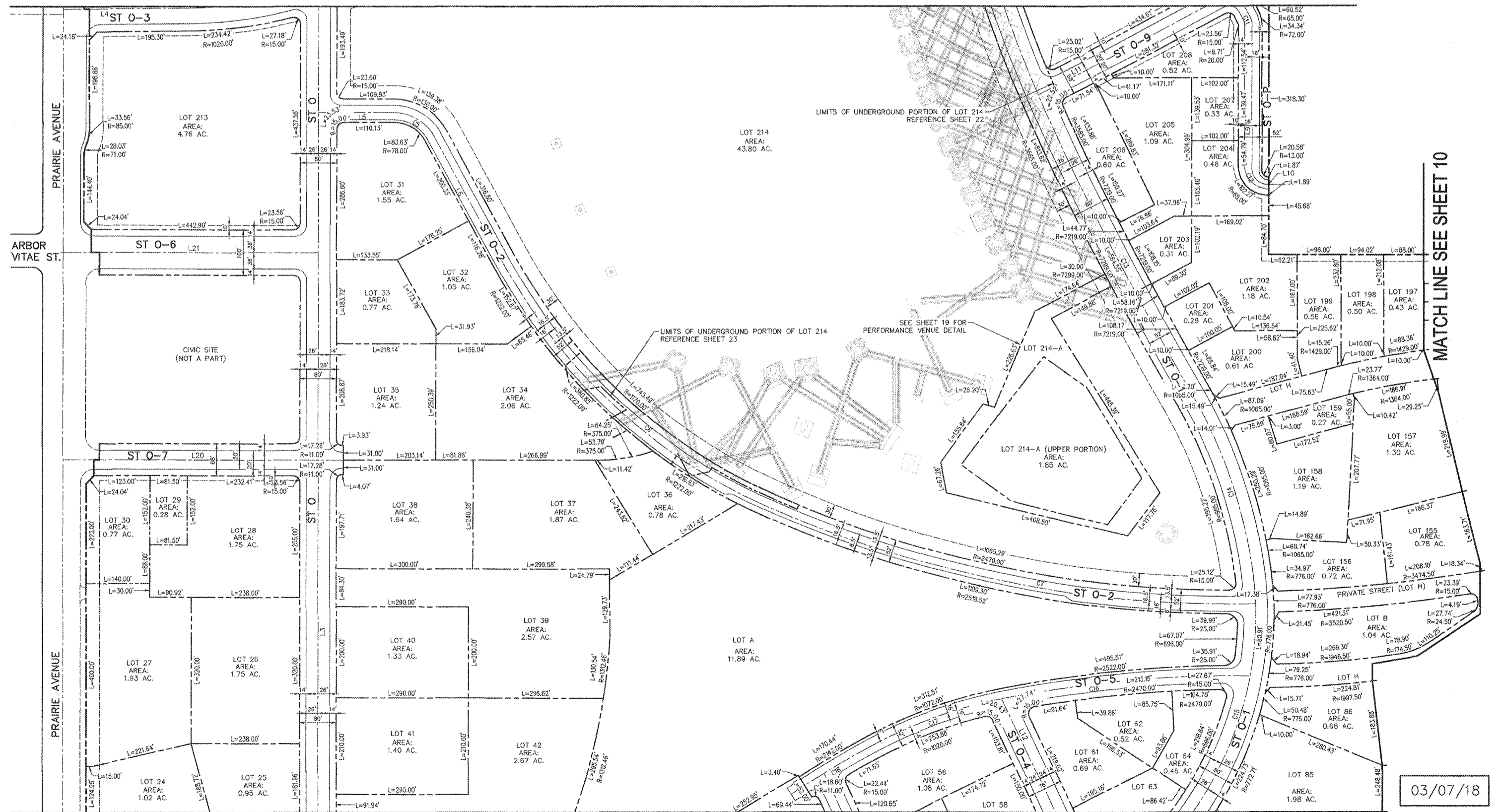


**VESTING TENTATIVE TRACT MAP NO. 80314**  
 IN THE CITY OF INGLEWOOD, CA  
 FOR MERGER, RESUBDIVISION AND CONDOMINIUM PURPOSES

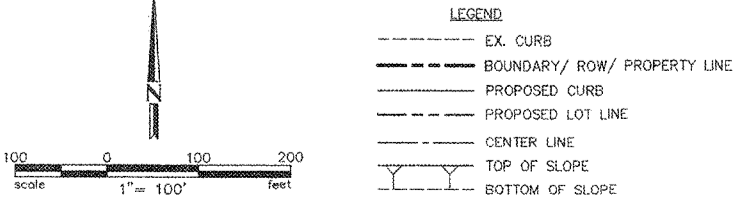
MATCH LINE SEE SHEET 09



MATCH LINE SEE SHEET 10

MATCH LINE SEE SHEET 07

03/07/18



NOTE: SEE SHEET 11 FOR CURVE AND LENGTH TABLES



**DAVID EVANS AND ASSOCIATES INC.**  
 201 S. FIGUEROA STREET, SUITE 240  
 LOS ANGELES, CA 90012  
 Phone: 213.337.9880

PREPARED UNDER THE SUPERVISION OF:  
 KARL MALLOCK, R.C.E. 42529

<b>HOLLYWOOD PARK LAND CO., LLC</b>		<b>L.A. STADIUM AND ENTERTAINMENT DISTRICT AT HOLLYWOOD PARK</b>	
DRAWN BY: I.P.	DATE: 03/07/18	SCALE: N.T.S.	
DESIGNED BY: KM	DATE: 03/07/18		
CHECKED BY: KM	DATE: 03/07/18		
APPROVED BY: CITY ENGINEER	DATE: 08 of 25		