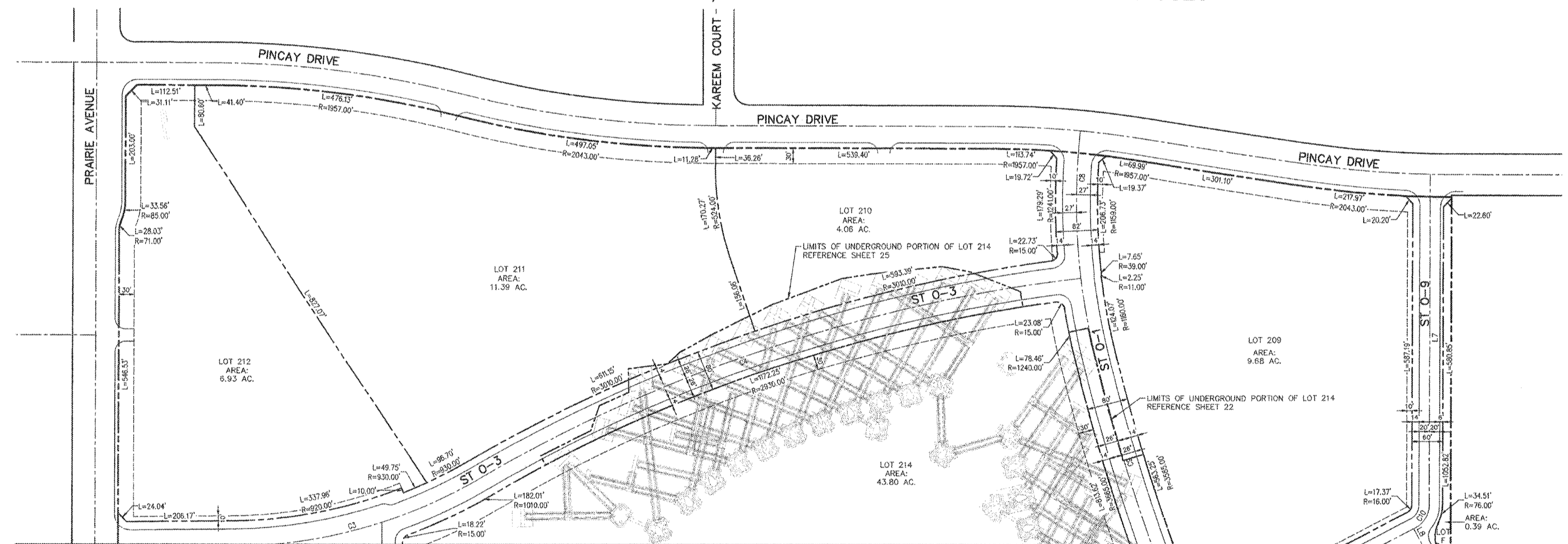
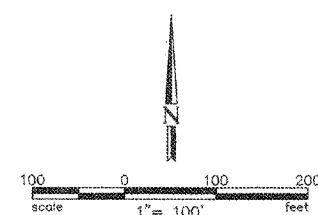


**VESTING TENTATIVE TRACT MAP NO. 80314**  
 IN THE CITY OF INGLEWOOD, CA  
 FOR MERGER, RESUBDIVISION AND CONDOMINIUM PURPOSES



MATCH LINE SEE SHEET 08

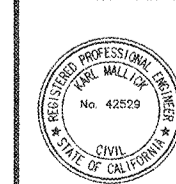
03/07/18



LEGEND

	EX. CURB
	BOUNDARY/ ROW/ PROPERTY LINE
	PROPOSED CURB
	PROPOSED LOT LINE
	CENTER LINE
	TOP OF SLOPE
	BOTTOM OF SLOPE

NOTE: SEE SHEET 11 FOR CURVE AND LENGTH TABLES



**DAVID EVANS AND ASSOCIATES INC.**  
 201 S. FIGUEROA STREET, SUITE 240  
 LOS ANGELES, CA 90012  
 Phone: 213.337.3880

KARL MALLOCC, R.C.E. 42520 DATE

<b>HOLLYWOOD PARK LAND CO., LLC</b>		SCALE: N.T.S.
L.A. STADIUM AND ENTERTAINMENT DISTRICT AT HOLLYWOOD PARK		
DESIGNED BY: LP	<b>VESTING TENTATIVE TRACT MAP MAP NO. 80314 SITE PARCELS</b>	DATE: 03/07/18
DRAWN BY: KM	APPROVED BY:	SHEET NO: 09 of 25
CHECKED BY: KM	CITY ENGINEER:	DATE:

Drawing prepared by: L.A. Stadium and Entertainment District, 201 S. Figueroa Street, Suite 240, Los Angeles, CA 90012. Date: 03/07/18. Scale: N.T.S.