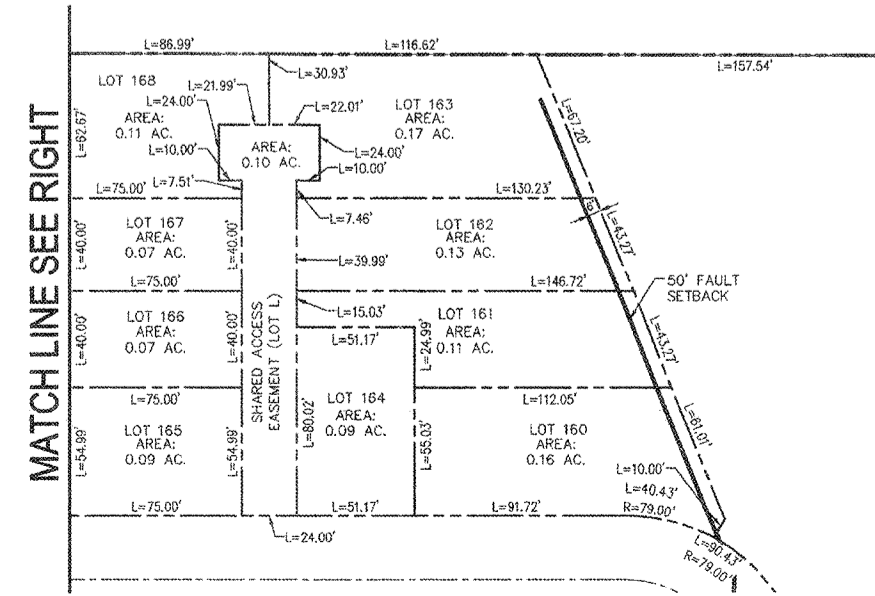
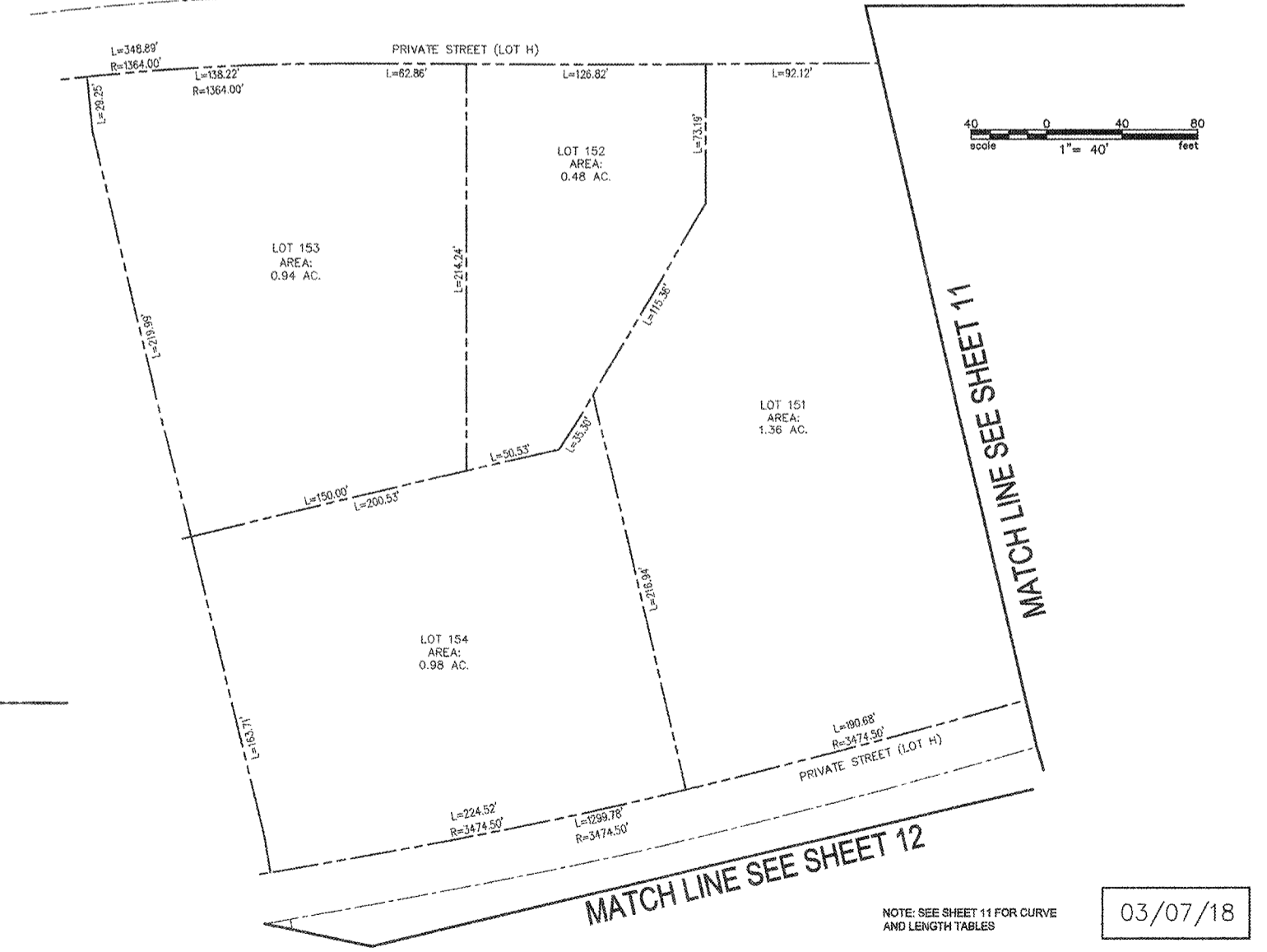
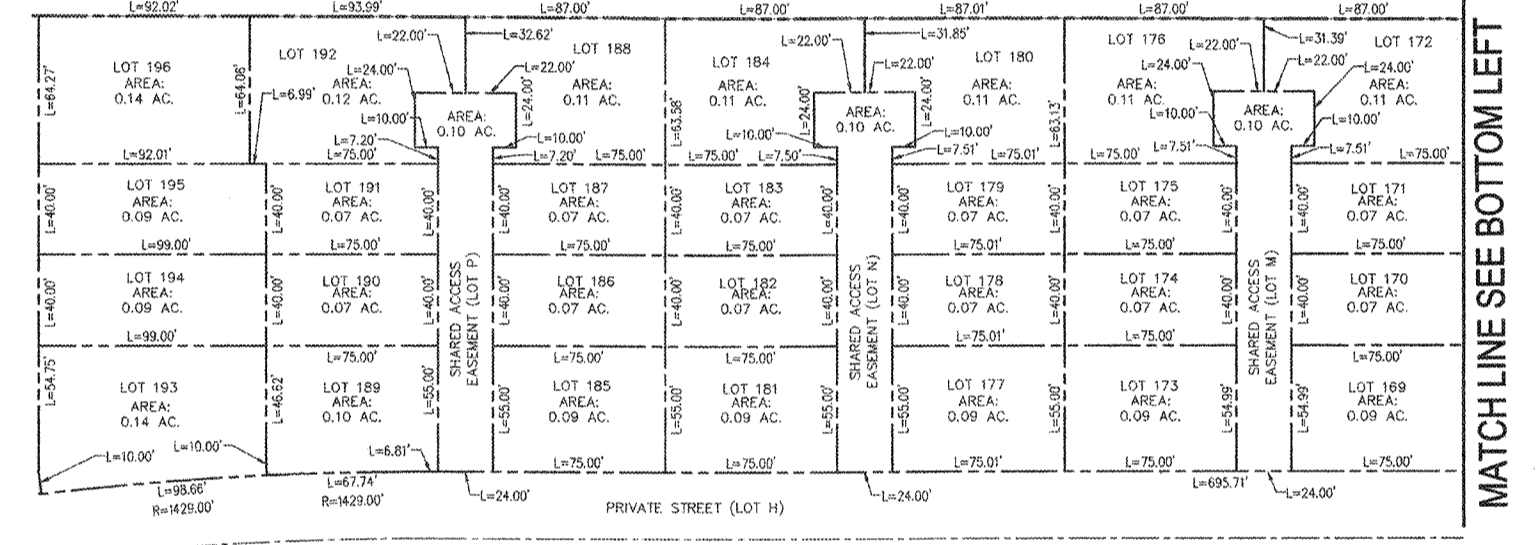
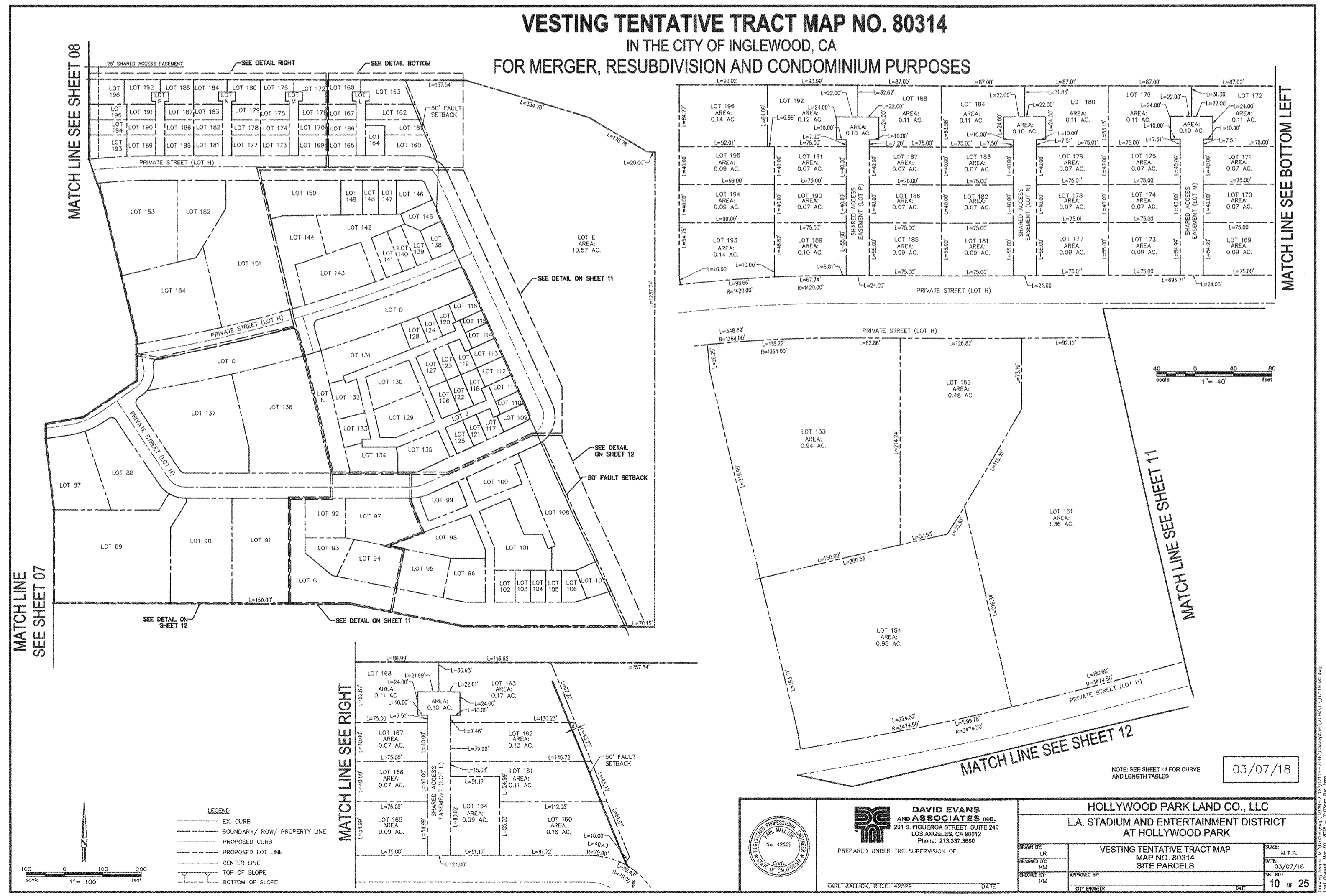


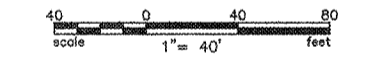
VESTING TENTATIVE TRACT MAP NO. 80314 IN THE CITY OF INGLEWOOD, CA FOR MERGER, RESUBDIVISION AND CONDOMINIUM PURPOSES



MATCH LINE SEE SHEET 07

MATCH LINE SEE SHEET 08

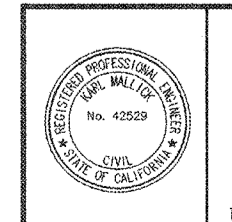
MATCH LINE SEE BOTTOM LEFT



NOTE: SEE SHEET 11 FOR CURVE AND LENGTH TABLES

03/07/18

- LEGEND**
- EX. CURB
 - BOUNDARY/ ROW/ PROPERTY LINE
 - PROPOSED CURB
 - PROPOSED LOT LINE
 - CENTER LINE
 - TOP OF SLOPE
 - BOTTOM OF SLOPE



DAVID EVANS AND ASSOCIATES INC.
201 S. FIGUEROA STREET, SUITE 240
LOS ANGELES, CA 90012
PHONE: 213.537.3600

PREPARED UNDER THE SUPERVISION OF:
KARL WALLICK, R.C.E. 42529

HOLLYWOOD PARK LAND CO., LLC		SCALE: N.T.S.	
L.A. STADIUM AND ENTERTAINMENT DISTRICT AT HOLLYWOOD PARK		DATE: 03/07/18	
DRAWN BY: LR	VESTING TENTATIVE TRACT MAP MAP NO. 80314	CHECKED BY: KM	APPROVED BY: DATE
DESIGNED BY: KM	SITE PARCELS	DATE	DATE
10 of 25			

Last Updated: Nov 07, 2018 7:13pm By: [unreadable]