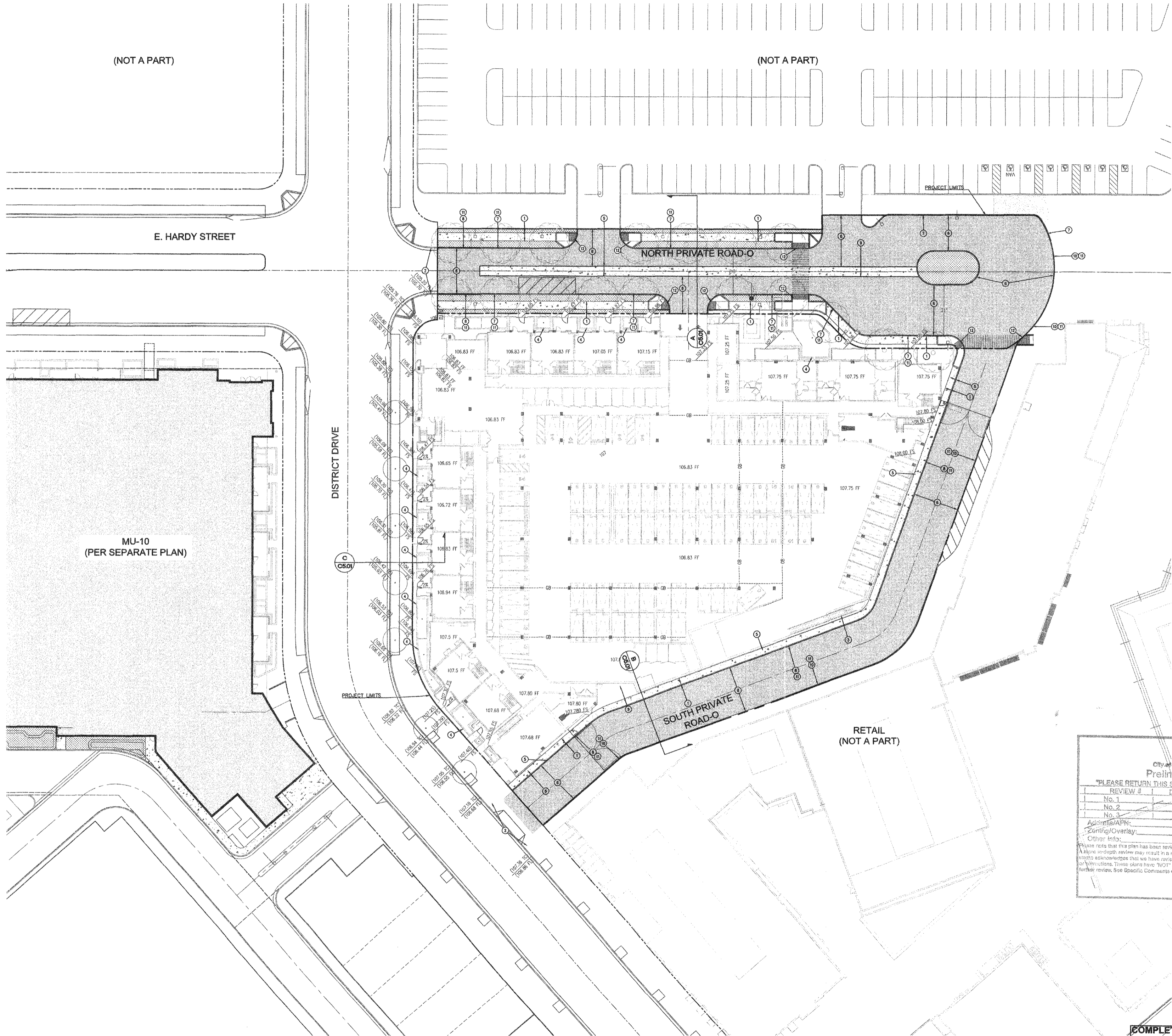


CONSTRUCTION NOTES

1. CONCRETE PAVEMENT/SIDEWALK, 4" FOC OVER 6" AS PEDESTRIAN TRAFFIC LOADING
2. STANDARD DRIVEWAY APPROACH PER LASED PLANS
3. SITE STAIRS, 4" CONCRETE RISERS; REFER TO ARCHITECTURAL PLAN FOR QUANTITY OF RISERS.
4. BIO-FILTRATION PLANTER BOXES; REFER TO DETAIL 6, SHEET C5.00
5. BIO-FILTRATION FILTERBA UNIT BY CONTECH, SIZE PER PLAN; REFER TO DETAILS 4 & 5, SHEET C5.00
6. ASPHALT CONCRETE PAVEMENT
7. 8" CONCRETE CURB ONLY
8. 8" CONCRETE CURB AND 18" GUTTER
9. CONCRETE LONGITUDINAL GUTTER PER SPPWC STD. PLAN 122-2
10. 6" CONCRETE ROLLED CURB
11. PAINT CURB FACE RED AND STENCIL WITH "FIRE LANE NO PARKING"
12. CURB RAMP PER SPPWC STD. PLAN 111-4

LEGEND

- CONCRETE PAVEMENT, 4" F.C.C. OVER 6" AS PEDESTRIAN TRAFFIC LOADING
- AC PAVEMENT
- LANDSCAPE PLANTER AREA PER LANDSCAPE PLANS



(NOT A PART)

(NOT A PART)

MU-10
(PER SEPARATE PLAN)

RETAIL
(NOT A PART)

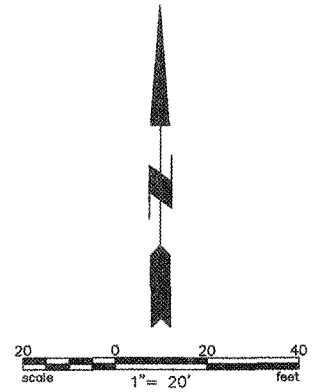
City of Inglewood - Planning Division
Preliminary Review Only
"PLEASE RETURN THIS SET AND REVISED SET FOR NEXT REVIEW"

REVIEW #	DATE	PLANNER
No. 1		
No. 2		
No. 3		

Address/APP: _____
Zoning/Overlay: _____
Other Info: _____

Please note that this plan has been reviewed based on the information provided by you, the applicant. A more in-depth review may result in a need for additional information or changes to your plan. This process acknowledges that we have reviewed your plan and we find that it requires additional information or corrections. These plans have "NOT" been approved by the Planning Division and will require further review. See Specific Comments on plans (in red).

**COMPLETE DRAWINGS
WILL BE SUBMITTED WITH
BUILDING PLAN CHECK.
FOR REFERENCE ONLY.**



HOLLYWOOD PARK RESIDENTIAL - MU-2C
INGLEWOOD, CALIFORNIA
HOLLYWOOD PARK RETAIL AND
COMMERCIAL INVESTORS, LLC

GRADING PLAN
NOT FOR CONSTRUCTION

THIS SET OF CONSTRUCTION DOCUMENTS HAS BEEN PREPARED FOR THE CONSTRUCTION OF AN APARTMENT PROJECT.
C2.01
2017-083-01
DATE: 06-21-2018
SCALE: 1" = 20'
PLOT PLAN RESUBMITTAL