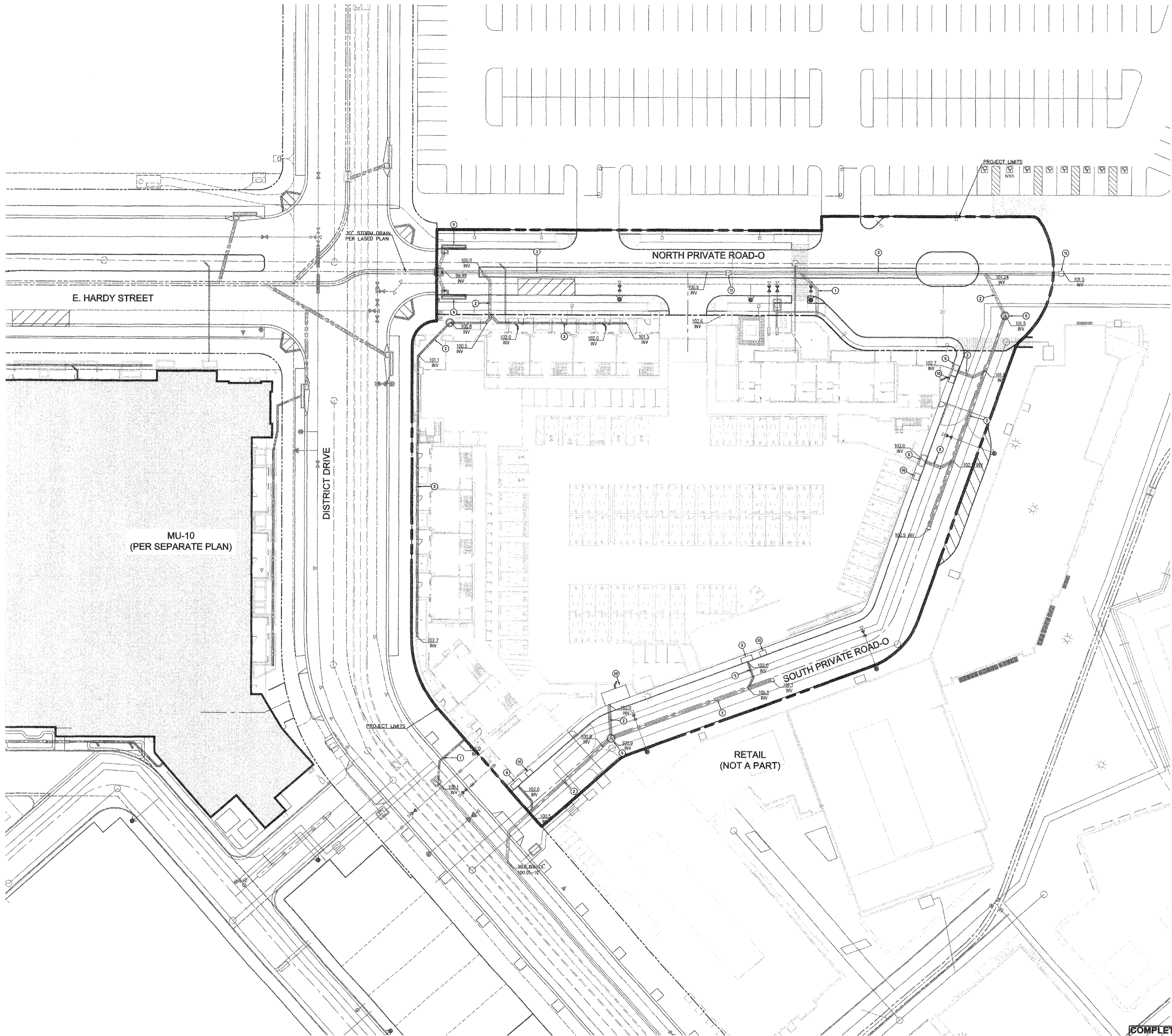


**CONSTRUCTION NOTES**

**STORM DRAIN**

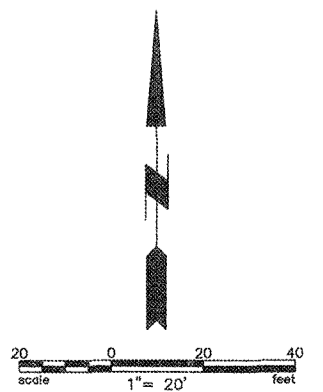
- ① INSTALL 12" HDPE STORM DRAIN PIPE (PER "ADS" OR EQUAL), PIPE BEDDING, TRENCH BACKFILL AND INSTALLATION PER ADS STD 101.
- ② INSTALL 18" HDPE STORM DRAIN PIPE (PER "ADS" OR EQUAL) PIPE BEDDING, TRENCH BACKFILL AND INSTALLATION PER ADS STD 101.
- ③ INSTALL 24" HDPE STORM DRAIN PIPE (PER "ADS" OR EQUAL) PIPE BEDDING, TRENCH BACKFILL AND INSTALLATION PER ADS STD 101.
- ④ INSTALL HDPE STORM DRAIN FITTING, SIZE AND TYPE PER PLAN.
- ⑤ CONSTRUCT MANHOLE PER SPPWC STD. 321-2
- ⑥ CONSTRUCT 12" OVERFLOW STANDPIPE WITH ATRUM GRATE PER DETAIL HEREON.
- ⑦ CONSTRUCT BIO-FILTRATION PLANTER PER DETAIL 6 ON SHEET CS-00.
- ⑧ REMOVE PLUG AND CONNECT TO THE CITY STORM DRAIN LINE. SEE L.A. STADIUM AND ENTERTAINMENT DISTRICT AT HOLLYWOOD PARK ON-SITE STORM DRAIN PLAN-PHASE 1 FOR CONTINUATION.
- ⑨ CONSTRUCT CURB OPENING CATCH BASIN PER SPPWC STD PLAN 300-3, W = 7'
- ⑩ CONSTRUCT BIO-FILTRATION FILTERRA UNIT, SIZE PER PLAN.
- ⑪ CONSTRUCT GRADING CATCH BASIN PER SPPWC STA PLAN 304-3



DATE	DESCRIPTION	BY	CHKD

HOLLYWOOD PARK RESIDENTIAL - MU-2C  
INGLEWOOD, CALIFORNIA  
HOLLYWOOD PARK RETAIL AND  
COMMERCIAL INVESTORS, LLC

STORM DRAIN PLAN  
NOT FOR CONSTRUCTION



COMPLETE DRAWINGS  
WILL BE SUBMITTED WITH  
BUILDING PLAN CHECK.  
FOR REFERENCE ONLY.

THIS SET OF CONSTRUCTION DOCUMENTS HAS BEEN PREPARED FOR THE CONSTRUCTION OF AN APARTMENT PROJECT.  
**C3.02**  
2017-083-01  
DATE  
1" = 20'  
SCALE  
PLOT PLAN  
RESUBMITTAL  
DATE  
06-21-2018  
ISSUE DATE