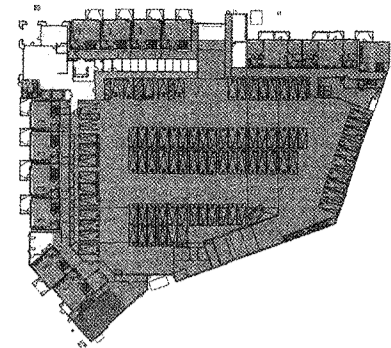


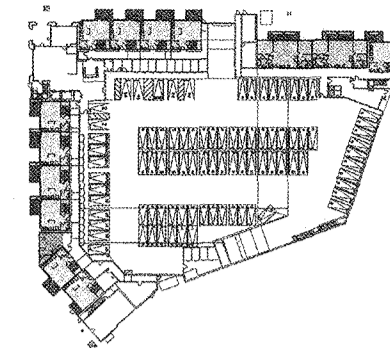
GROSS RESIDENTIAL FLOOR AREA SUMMARY

UNIT MIX



1ST STORY
1" = 80'-0"

- INCLUDED IN GROSS AREA
- INCLUDED IN GROSS AREA
- INCLUDED IN GROSS AREA



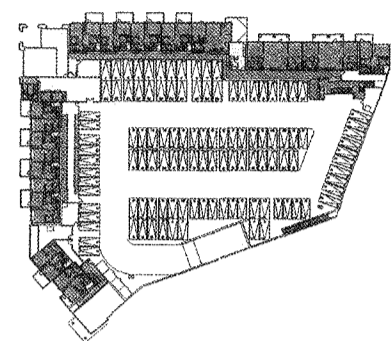
1ST STORY
1" = 80'-0"

- AMENITY
- STUDIO
- ONE BEDROOM + DEN
- ONE BEDROOM
- TWO BEDROOM
- THREE BEDROOM
- UNIT DECK
- TOWN HOME

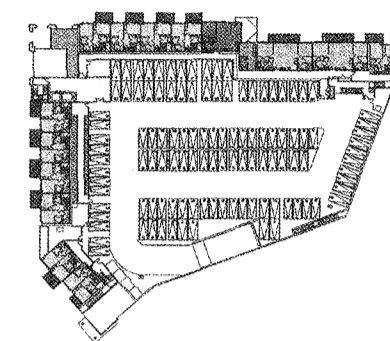
UNIT TYPE AND COUNT	
AREA USE	UNIT COUNT
TWO BEDROOM	2
TOWN HOME	11
1ST STORY	13

AMENITIES	
SPACE	AREA
DOG SPA	440 SF
1ST STORY BUSINESS CENTER	667 SF
GUEST LOUNGE	372 SF

UNIT DECKS		
AREA USE	COUNT	AREA
UNIT DECK	13	1823 SF
1ST STORY	13	1823 SF



2ND STORY
1" = 80'-0"

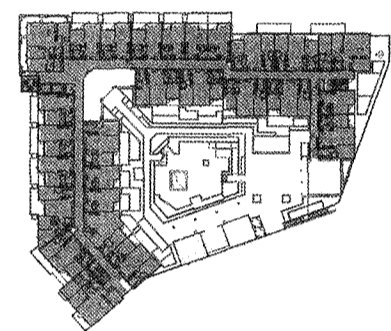


2ND STORY
1" = 80'-0"

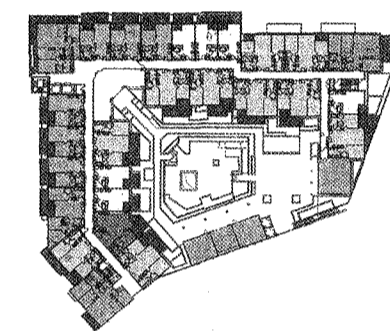
UNIT TYPE AND COUNT	
AREA USE	UNIT COUNT
ONE BEDROOM + DEN	1
TWO BEDROOM	2
2ND STORY	3

AMENITIES	
SPACE	AREA
2ND STORY	1040 SF
FITNESS	919 SF

UNIT DECKS		
AREA USE	COUNT	AREA
UNIT DECK	13	1828 SF
2ND STORY	13	1828 SF



3RD STORY
1" = 80'-0"

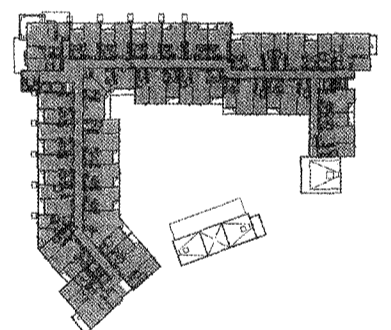


3RD STORY
1" = 80'-0"

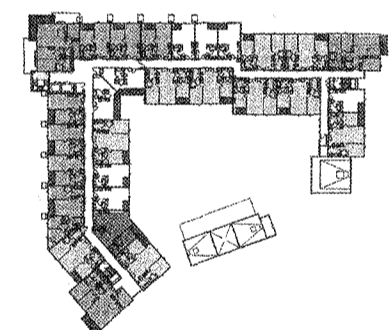
UNIT TYPE AND COUNT	
AREA USE	UNIT COUNT
STUDIO	6
ONE BEDROOM	6
ONE BEDROOM + DEN	1
TWO BEDROOM	10
THREE BEDROOM	4
3RD STORY	27

AMENITIES	
SPACE	AREA
LOUNGE	1588 SF
3RD STORY	2617 SF

UNIT DECKS		
AREA USE	COUNT	AREA
UNIT DECK	27	6203 SF
3RD STORY	27	6203 SF



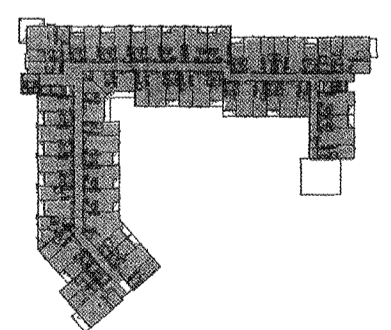
4TH STORY
1" = 80'-0"



4TH STORY
1" = 80'-0"

UNIT TYPE AND COUNT	
AREA USE	UNIT COUNT
STUDIO	8
ONE BEDROOM	6
ONE BEDROOM + DEN	1
TWO BEDROOM	10
THREE BEDROOM	4
4TH STORY	29

UNIT DECKS		
AREA USE	COUNT	AREA
UNIT DECK	29	2163 SF
4TH STORY	29	2163 SF



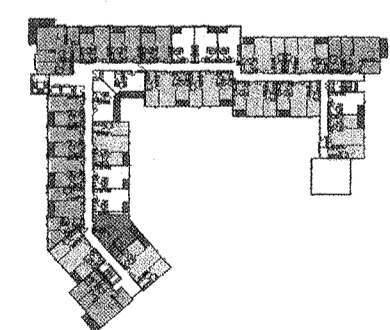
5TH STORY
1" = 80'-0"

City of Inglewood - Planning Division
Preliminary Review Only
"PLEASE RETURN THIS SET AND REVISED SET FOR NEXT REVIEW"

REVIEW #	DATE	PLANNER
No. 1		
No. 2		
No. 3		

Address/APN: _____
Zoning/Overlay: _____

Other info: _____
Please note that this plan has been reviewed based on the information provided by you, the applicant. A more in-depth review may result in a need for additional information or changes to your plan. This stamp acknowledges that we have reviewed your plan and we find that it requires additional information for completion. These plans have "NOT" been approved by the Planning Division and will require further review. See Specific Comments on plans (in red).



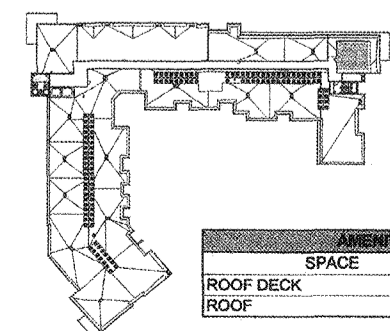
5TH STORY
1" = 80'-0"

UNIT TYPE AND COUNT	
AREA USE	UNIT COUNT
STUDIO	8
ONE BEDROOM	6
ONE BEDROOM + DEN	1
TWO BEDROOM	10
THREE BEDROOM	4
5TH STORY	29

UNIT DECKS		
AREA USE	COUNT	AREA
UNIT DECK	29	2163 SF
5TH STORY	29	2163 SF

GROSS RESIDENTIAL FLOOR AREA SUMMARY

GROSS RESIDENTIAL AREA	
LEVEL	AREA
1ST STORY	19171 SF
2ND STORY	15442 SF
3RD STORY	35872 SF
4TH STORY	33160 SF
5TH STORY	33160 SF
ROOF	749 SF
TOTAL	137356 SF



UNIT MIX ROOF
1" = 80'-0"

AMENITIES	
SPACE	AREA
ROOF DECK	749 SF
ROOF	749 SF

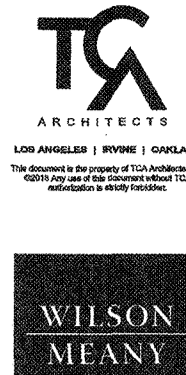
UNIT MIX SUMMARY

UNIT DECK SUMMARY		
AREA USE	COUNT	AREA
UNIT DECK	111	14181 SF
TOTAL: 111	111	14181 SF

UNIT MIX			
UNIT TYPE	AVERAGE S.F.	UNIT COUNT	% UNIT MIX
STUDIO	606	22	22%
ONE BEDROOM	777	18	18%
ONE BEDROOM + DEN	1027	4	4%
TWO BEDROOM	1155	34	34%
TWO BEDROOM - TOWN	1289	11	11%
THREE BEDROOM	1435	12	12%
TOTAL UNITS		101	

UNIT NET RENTABLE		
LEVEL	UNIT COUNT	AREA
1ST STORY	7.5	9887 SF
2ND STORY	8.5	9925 SF
3RD STORY	27	26500 SF
4TH STORY	29	27891 SF
5TH STORY	29	27891 SF
TOTAL	101	102094 SF

AREA GROSS - ROOF
1" = 80'-0"



HOLLYWOOD PARK RESIDENTIAL - MU-2C
INGLEWOOD, CALIFORNIA
HOLLYWOOD PARK RETAIL AND COMMERCIAL INVESTORS, LLC

AREA DIAGRAMS
NOT FOR CONSTRUCTION

THIS SET OF CONSTRUCTION DOCUMENTS HAS BEEN PREPARED FOR THE CONSTRUCTION OF AN APARTMENT PROJECT.
G.11
2017-09-01
JOB NUMBER
As Indicated
PLOT PLAN RESUBMITTAL
08/21/2018
ISSUE DATE