

**POOL, LAUNDRY, TANKS/STAIRS**  
 OCCUPANT LOAD FACTOR 1/15  
 PER LABC TABLE 1004.1.2  
 DECK: 2,226 / 15 = 148 OCCUPANTS  
 POOL: 188 / 50 = 4 OCCUPANTS  
 TOTAL OCCUPANTS: 152 OCCUPANTS  
 2 EXITS REQUIRED  
 2 EXITS PROVIDED

**LOUNGE (A3 OCC.)**  
 OCCUPANT LOAD FACTOR 1/15  
 PER LABC TABLE 1004.1.2  
 1,614 / 15 = 108 OCCUPANTS  
 2 EXITS REQUIRED  
 2 EXITS PROVIDED

**FITNESS C (B OCC.)**  
 OCCUPANT LOAD FACTOR 1/50  
 (FIXED FITNESS EQUIPMENT)  
 PER LABC TABLE 1004.1.2  
 920 / 50 = 19 OCCUPANTS  
 1 EXIT REQUIRED  
 1 EXIT PROVIDED

**THIRD FLOOR EXITING:**  
 590 OCCUPANTS  
 3 EXITS REQUIRED  
 4 EXITS PROVIDED

590 OCC. / 4 STAIRS = 148 OCC. PER STAIR  
 148 x 0.3 = 44.4" MIN. STAIR WIDTH  
 148 x 0.2 = 29.6" MIN. DOOR SIZE

48" STAIR WIDTH PROVIDED  
 36" DOOR PROVIDED

**TOTAL EXIT CAPACITY = 640 OCCUPANTS**

**COURTYARD**  
 OCCUPANT LOAD FACTOR 1/15  
 PER LABC TABLE 1004.1.2  
 2678 / 15 = 179 OCCUPANTS  
 2 EXITS REQUIRED  
 2 EXITS PROVIDED

**THIRD FLOOR RESIDENTIAL (R-2 OCCUPANCY)**  
 OCCUPANCY LOAD FACTOR 1/200  
 PER CBC TABLE 1004.1.2  
 26,238 / 200 = 132 OCCUPANTS  
 2 EXITS REQUIRED  
 2 EXITS PROVIDED

**FIRST FLOOR RESIDENTIAL (R-2 OCCUPANCY)**  
 OCCUPANCY LOAD FACTOR 1/200  
 PER CBC TABLE 1004.1.2  
 3590 / 200 = 18 OCCUPANTS  
 1 EXIT REQUIRED  
 2 EXITS PROVIDED  
 36" DOOR PROVIDED

**PARKING GARAGE (S-2 OCCUPANCY)**  
 OCCUPANCY LOAD FACTOR 1/200  
 PER CBC TABLE 1004.1.2  
 38815 / 200 = 199 OCCUPANTS  
 2 EXITS PROVIDED  
 36" DOOR PROVIDED

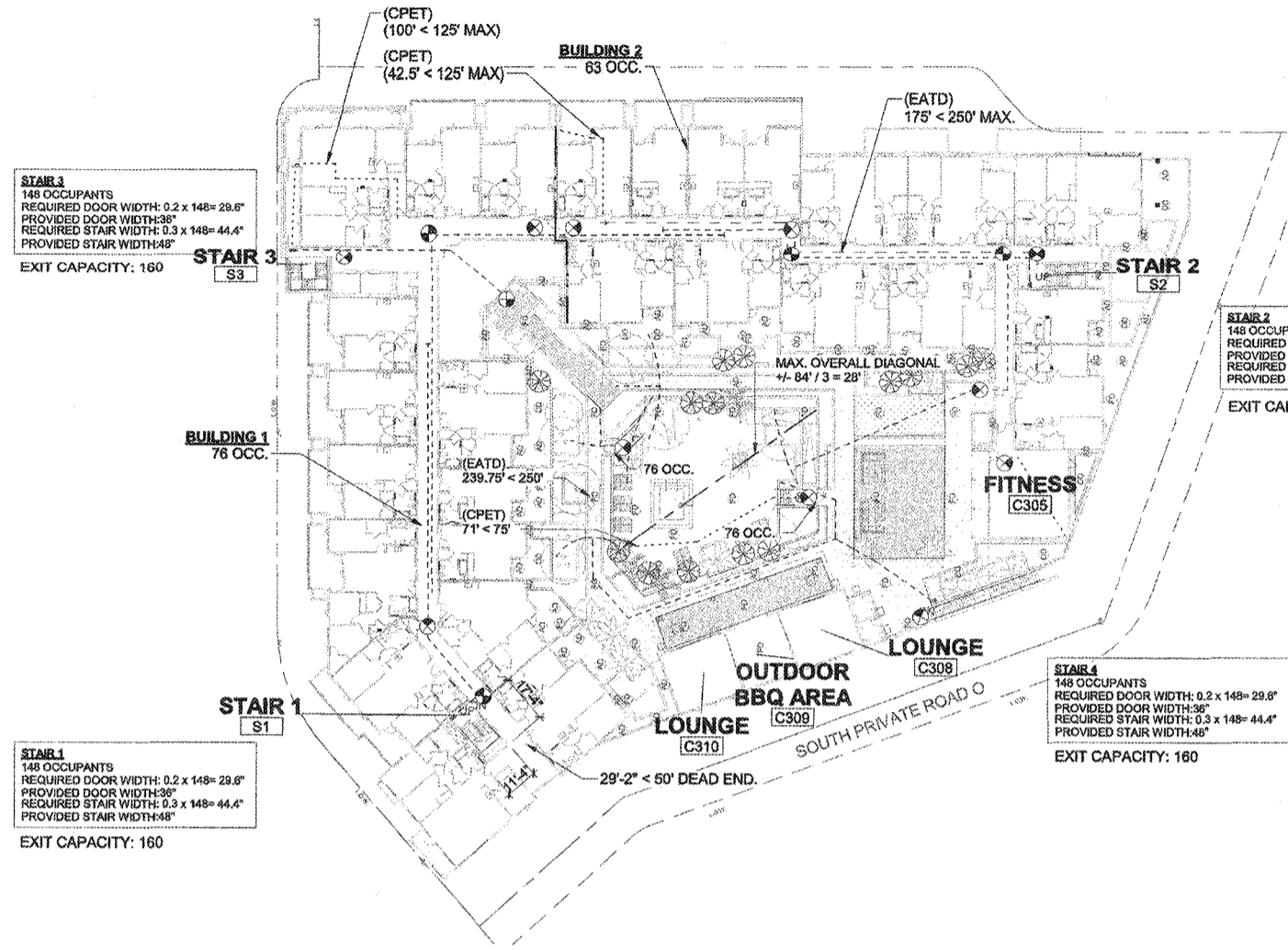
**LOBBY/LEASING (B OCCUPANCY)**  
 OCCUPANCY LOAD FACTOR 1/100  
 PER CBC TABLE 1004.1.2  
 2124 / 100 = 22 OCCUPANTS  
 1 EXITS REQUIRED  
 1 EXITS PROVIDED  
 36" DOOR PROVIDED

**RETAIL (M OCCUPANCY)**  
 OCCUPANCY LOAD FACTOR 1/60  
 PER CBC TABLE 1004.1.2  
 997 / 60 = 17 OCCUPANTS  
 1 EXITS REQUIRED  
 1 EXITS PROVIDED  
 36" DOOR PROVIDED

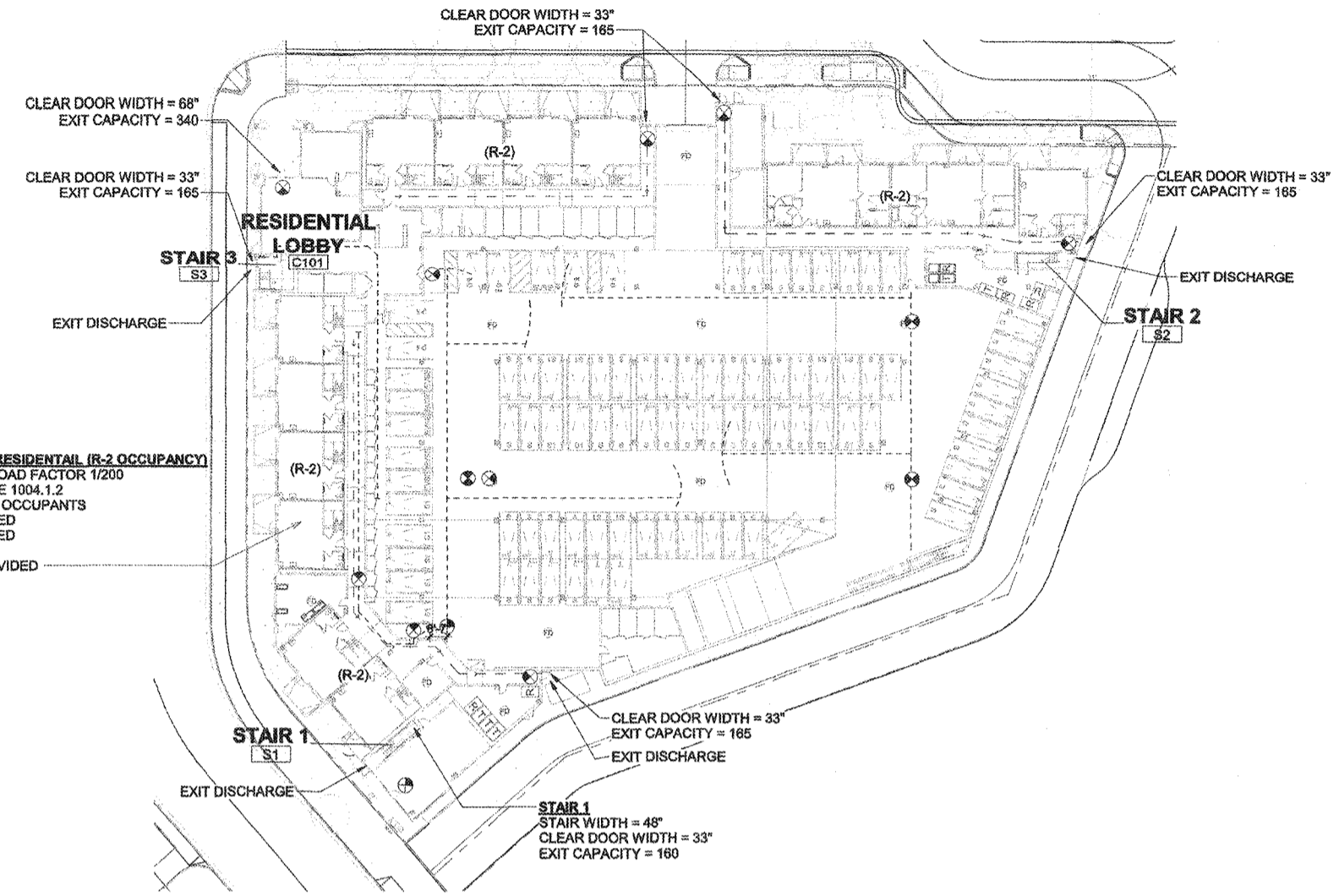
**FIRST FLOOR RESIDENTIAL (R-2 OCCUPANCY)**  
 OCCUPANCY LOAD FACTOR 1/200  
 PER CBC TABLE 1004.1.2  
 5288 / 200 = 27 OCCUPANTS  
 1 EXIT REQUIRED  
 1 EXIT PROVIDED  
 36" DOOR PROVIDED

**CODE NOTES**

- SEE SHEET G.10 FOR APPLICABLE GENERAL NOTES.
- SEE SHEET COVER SHEET FOR SYMBOLS & ABBREVIATIONS.
- DOOR SHALL SWING IN THE DIRECTION OF EGRESS TRAVEL WHERE SERVING AN OCCUPANT LOAD OF 50 OR MORE PERSONS.
- PROVIDE HIGH LEVEL EXIT SIGNS CENTERED ON CEILING/PORTALS, UNLESS DIRECTED OTHERWISE BY INSPECTOR OR OWNER.
- BUILDING IS EQUIPPED WITH AUTOMATIC SPRINKLER SYSTEM IN ACCORDANCE WITH NFPA 13. THE SEPARATION DISTANCE BETWEEN 2 EXIT DOORS OR EXIT ACCESS DOORS SHALL BE NOT LESS THAN ONE-THIRD OF THE LENGTH OF THE MAXIMUM OVERALL DIAGONAL DIMENSION OF THE AREA SERVED.



3 3RD STORY  
 1" = 30'-0"



1 1ST STORY  
 1" = 30'-0"

**FOURTH FLOOR RESIDENTIAL (R-2 OCCUPANCY)**  
 OCCUPANCY LOAD FACTOR 1/200  
 PER CBC TABLE 1004.1.2  
 27538 / 200 = 138 OCCUPANTS  
 2 EXITS REQUIRED  
 3 EXITS PROVIDED  
**TOTAL EXIT CAPACITY = 480 OCCUPANTS**

**FOURTH FLOOR EXITING:**  
 138 OCCUPANTS  
 2 EXITS REQUIRED  
 3 EXITS PROVIDED  
 138 OCC. / 2 STAIRS = 69 OCC. PER STAIR  
 69 x 0.3 = 20.7" MIN. STAIR WIDTH  
 69 x 0.2 = 13.8" MIN. DOOR SIZE  
 48" STAIR WIDTH PROVIDED  
 36" DOOR PROVIDED

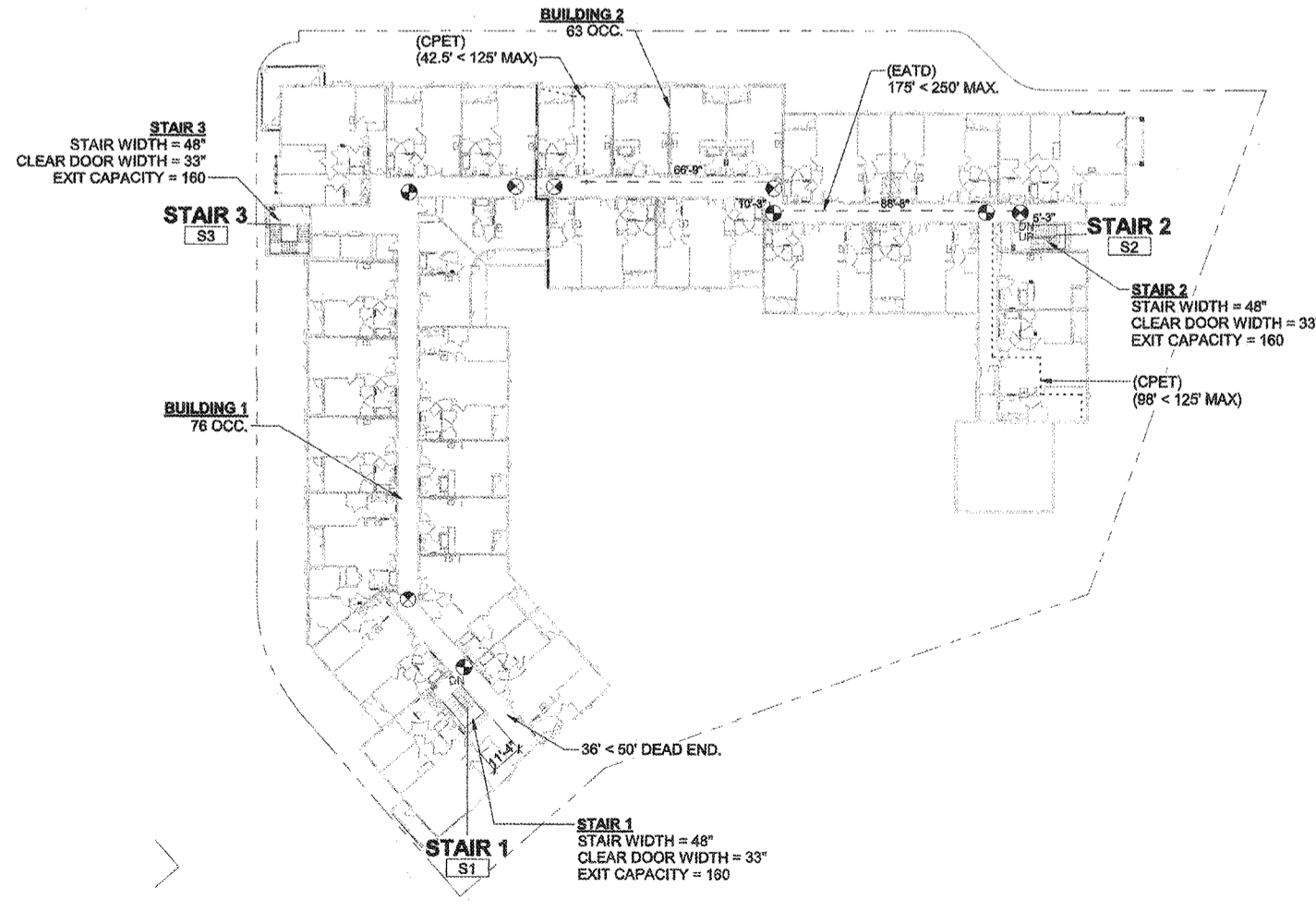
**SECOND FLOOR RESIDENTIAL (R-2 OCCUPANCY)**  
 OCCUPANCY LOAD FACTOR 1/200  
 PER CBC TABLE 1004.1.2  
 3619 / 200 = 18 OCCUPANTS  
 1 EXIT REQUIRED  
 1 EXIT PROVIDED  
 36" DOOR PROVIDED

**EXIT ACCESS TRAVEL DISTANCE - STORY 2**  
 RESIDENT PARKING (S-2, 400' MAX.)

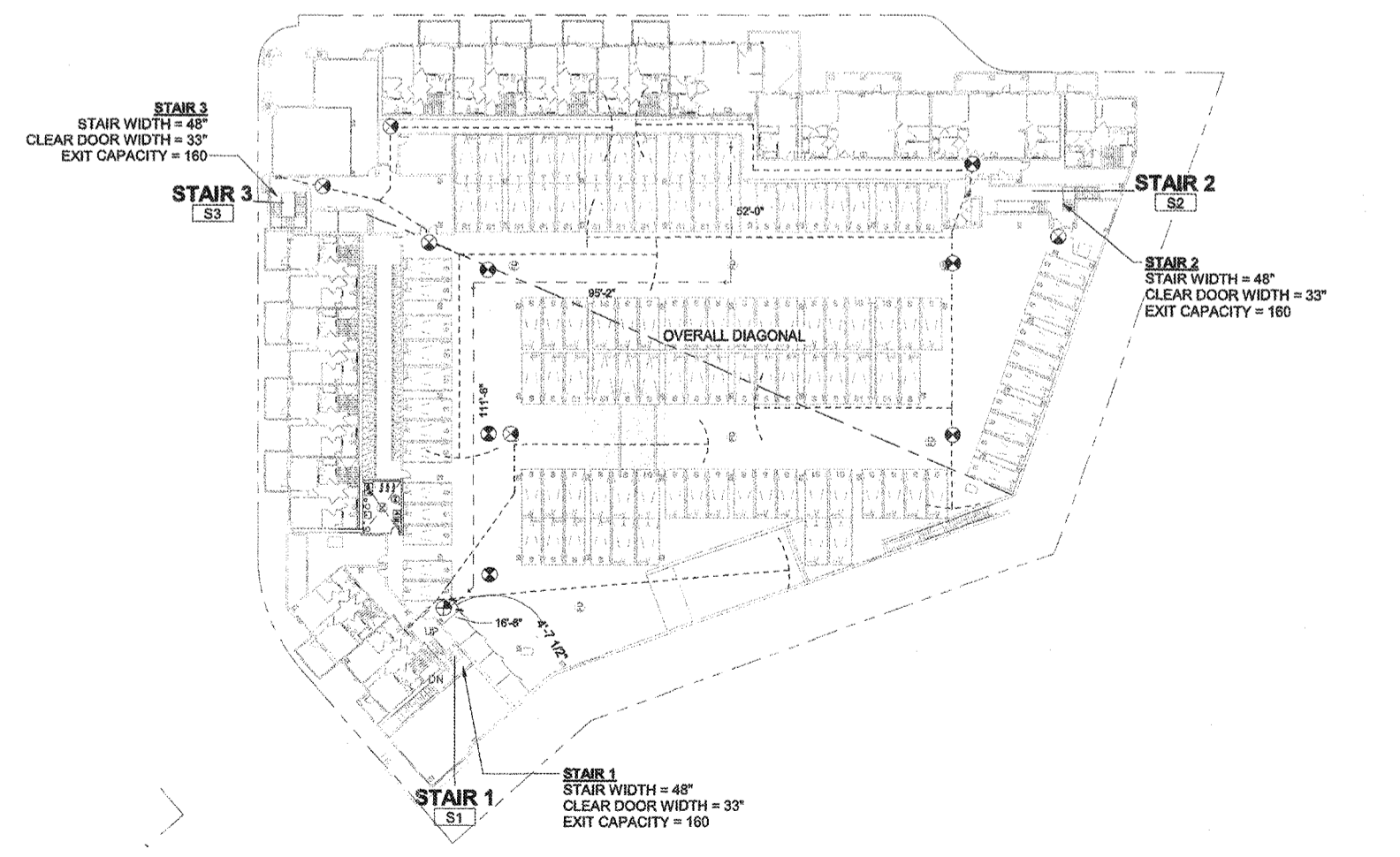
SEGMENT	MAXIMUM DISTANCE
SEGMENT 1	122'-0"
SEGMENT 2	86'-2"
SEGMENT 3	111'-0"
SEGMENT 4	16'-6 1/2"
<b>Grand Total</b>	<b>275'-2 1/2"</b>

OCCUPANT LOAD = 208 OCCUPANT  
 TOTAL EXIT CAPACITY = 480 OCCUPANTS

**PARKING GARAGE (S-2 OCCUPANCY)**  
 OCCUPANCY LOAD FACTOR 1/200  
 PER CBC TABLE 1004.1.2  
 37254 / 200 = 187 OCCUPANTS  
 2 EXITS REQUIRED  
 3 EXITS PROVIDED  
 36" DOOR PROVIDED



4 4TH & 5TH STORY  
 1" = 30'-0"



2 2ND STORY  
 1" = 30'-0"

**LEGEND**

- COMMON PATH OF EGRESS TRAVEL (CPET)
- MAXIMUM DISTANCES (TABLE 1006.2.1):  
 GROUP R-2: 125 FT  
 GROUP S-2: 100 FT  
 GROUP B: 100 FT  
 GROUP A-3: 75 FT
- OVERALL DIAGONAL
- EXIT ACCESS TRAVEL DISTANCE (EATD) BETWEEN EXITS:  
 MAXIMUM DISTANCES (TABLE 1017.2):  
 GROUP R-2: 250 FT  
 GROUP B: 300 FT  
 GROUP A-3: 200 FT
- 2 HOUR FIRE WALL
- EXIT POINT OF EGRESS
- WET STANDPIPE - CLASS I
- ILLUMINATED EXIT SIGN, TYP., PROVIDE REFLECTIVE EXIT SIGN 18" A.F.F.
- 150 FT. HOSE PULL TYP.

HOLLYWOOD PARK RESIDENTIAL - MU-2C  
 INGLEWOOD, CALIFORNIA  
 HOLLYWOOD PARK RETAIL AND COMMERCIAL INVESTORS, LLC

CODE ANALYSIS - EXITING PLANS - STORY 1-STORY 4  
 NOT FOR CONSTRUCTION