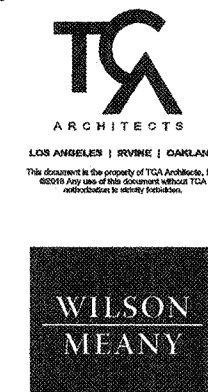


CODE NOTES

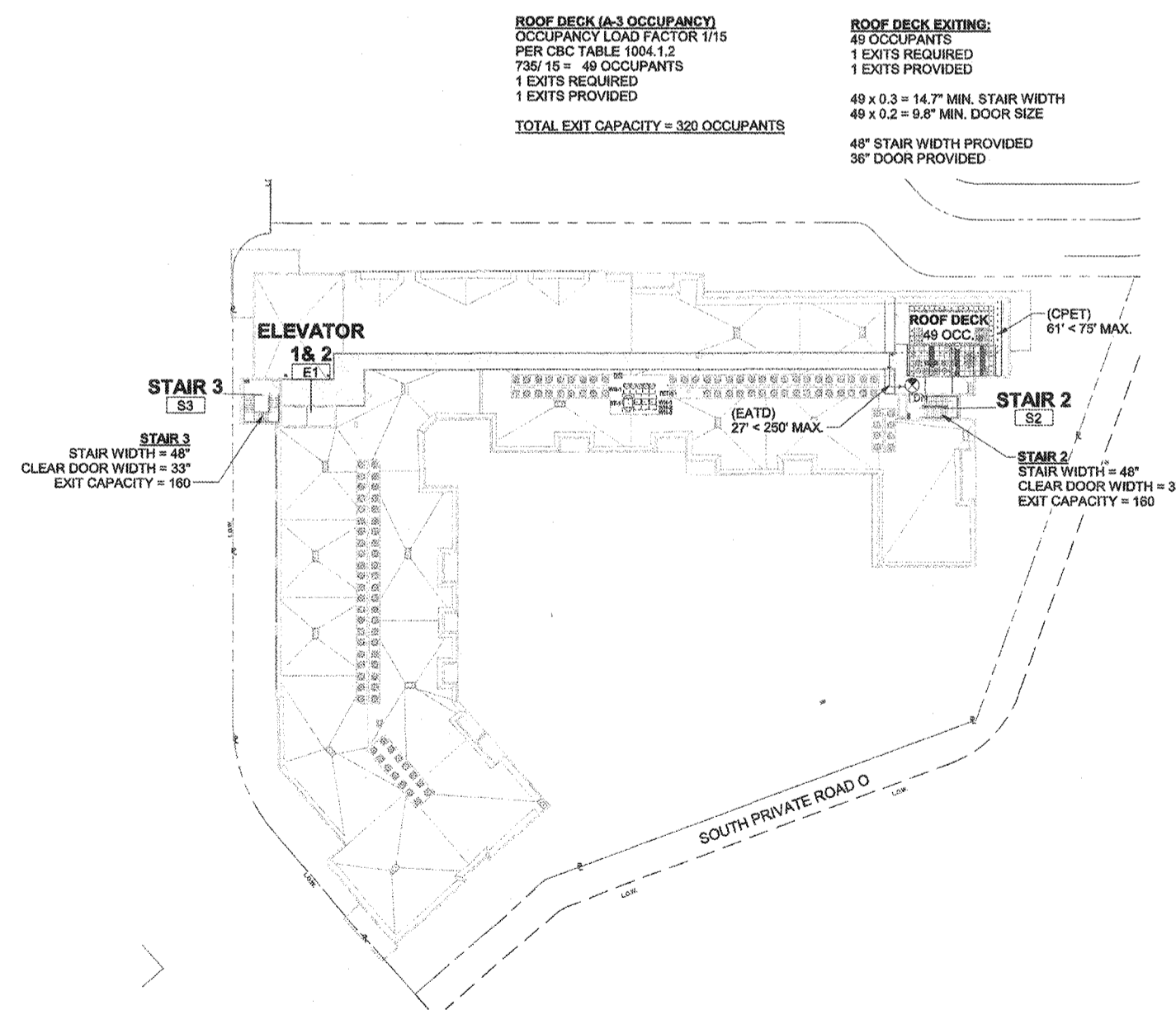
- SEE SHEET G.10 FOR APPLICABLE GENERAL NOTES.
- SEE SHEET COVER SHEET FOR SYMBOLS & ABBREVIATIONS.
- DOOR SHALL SWING IN THE DIRECTION OF EGRESS TRAVEL WHERE SERVING AN OCCUPANT LOAD OF 50 OR MORE PERSONS.
- PROVIDE HIGH LEVEL EXIT SIGNS CENTERED ON CEILING/PORTALS, UNLESS DIRECTED OTHERWISE BY INSPECTOR OR OWNER.
- BUILDING IS EQUIPPED WITH AUTOMATIC SPRINKLER SYSTEM IN ACCORDANCE WITH NFPA 13. THE SEPARATION DISTANCE BETWEEN 2 EXIT DOORS OR EXIT ACCESS DOORS SHALL BE NOT LESS THAN ONE-THIRD OF THE LENGTH OF THE MAXIMUM OVERALL DIAGONAL DIMENSION OF THE AREA SERVED.



STAIR MATRIX

		STAIR ACCESS MATRIX						
STAIR LEVEL		1	2	3	4	5	6	7
ROOF		●	●	●				
5		●	●	●				
4		●	●	●				
3		●	●	●	●			
2		●	●	●	○			
1		●	●	●	●			
STANDPIPE		●	●	●				

● STAIR ACCESS
○ PASS THROUGH FLOOR, NO ACCESS



2 MU2C - EXITING PLAN - ROOF
1" = 30'-0"

HOLLYWOOD PARK RESIDENTIAL - MU-2C
INGLEWOOD, CALIFORNIA
HOLLYWOOD PARK RETAIL AND COMMERCIAL INVESTORS, LLC

ENVIRONMENTAL CODE ANALYSIS - EXITING PLANS - STORY 5-ROOF
NOT FOR CONSTRUCTION

THIS SET OF CONSTRUCTION DOCUMENTS HAS BEEN PREPARED FOR THE CONSTRUCTION OF AN APARTMENT PROJECT.
G.21
2017-083-01
JOB NUMBER
As Indicated
PLOT PLAN RESUBMITTAL
06/21/2018
DATE