

**MATERIAL KEYNOTES**

- 1 EXTERIOR STUCCO - 20/30 SAND FINISH
- 2 STO EXTERIOR PLASTER - LIMESTONE FINISH
- 3 LIMESTONE VENEER - BRUSHED
- 4 METAL FASCIA PANEL - POWDER COAT
- 5 ALUMINUM CANOPY - POWDER COAT
- 6 CONCRETE SLAB AWNING
- 7 METAL SCREEN at ROOF DECK WALKWAY
- 8 ALUMINUM SHADE STRUCTURE - POWDER COAT
- 9 METAL & GLASS GATE w/ FIXED SIDE LIGHT.
- 10 VINYL WINDOWS - COLOR TBD
- 11 ALUMINUM STOREFRONT WINDOWS - ANNOXIDIZED ALUMINUM
- 12 VERTICAL METAL GUARD RAIL - PAINT
- 13 EXHAUST / INTAKE LOUVER
- 14 ALUMINUM GUTTER - POWDER COAT

**NOTES**

1. ALL ILLUMINATION WILL BE CONFINED TO THE SITE AND WILL NOT CAUSE ANY GLARE TO ADJACENT PROPERTIES.
2. ALL SIGNAGE WILL BE UNDER A SEPARATE PERMIT.
3. INTERIOR NOISE LEVELS ATTRIBUTABLE TO EXTERIOR NOISE WILL NOT EXCEED 45 DECIBELS IN ANY HABITABLE ROOM.
4. SEE SHEET A8.20 FOR WINDOW SCHEDULE, AND ACOUSTICAL REQUIREMENT.



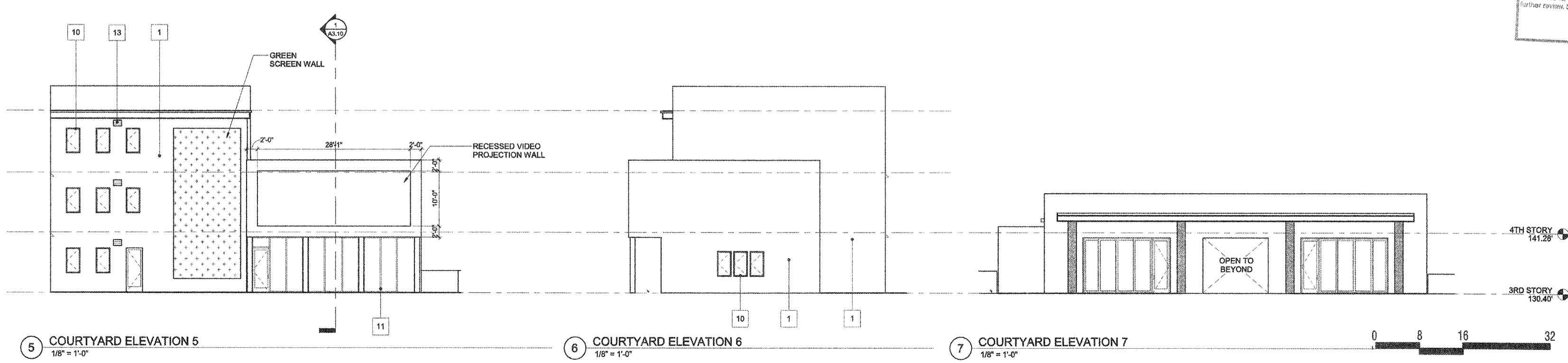
1 COURTYARD ELEVATION 1  
1/8" = 1'-0"

2 COURTYARD ELEVATION 2  
1/8" = 1'-0"

3 COURTYARD ELEVATION 3  
1/8" = 1'-0"



4 COURTYARD ELEVATION 4  
1/8" = 1'-0"



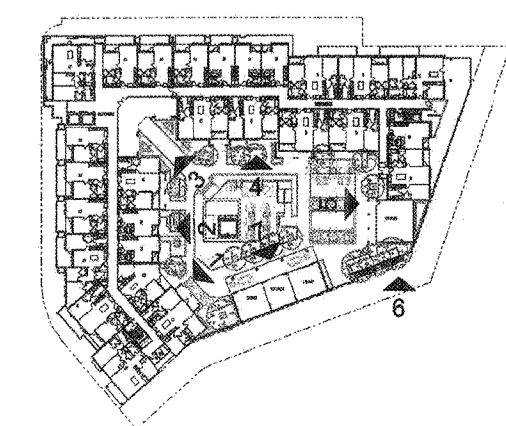
5 COURTYARD ELEVATION 5  
1/8" = 1'-0"

6 COURTYARD ELEVATION 6  
1/8" = 1'-0"

7 COURTYARD ELEVATION 7  
1/8" = 1'-0"

City of Inglewood - Planning Division  
**Preliminary Review Only**  
"PLEASE RETURN THIS SET AND REVISED SET FOR NEXT REVIEW"  
REVIEW #      DATE      PLANNER  
No. 1  
No. 2  
No. 3  
Address/APN:  
Zoning/Overlay:  
Other Info:  
Please note that this plan has been reviewed based on the information provided by you, the applicant. A more in-depth review may result in a need for additional information or changes to your plan. This plan acknowledges that we have reviewed your plan and we feel that it requires additional information for completion. This plan has "NOT" been approved by the Planning Division and will require further review. See Specific Comments on plans (in red).

**KEYPLAN**



HOLLYWOOD PARK RESIDENTIAL - MU-2C  
INGLEWOOD, CALIFORNIA  
HOLLYWOOD PARK RETAIL AND COMMERCIAL INVESTORS, LLC

COURTYARD ELEVATIONS

NOT FOR CONSTRUCTION

THIS SET OF CONSTRUCTION DOCUMENTS HAS BEEN PREPARED FOR THE CONSTRUCTION OF AN APARTMENT PROJECT.  
**A2.12**  
2017-093-01  
24-00-000  
As Indicated  
PLOT PLAN  
RESUBMITTAL  
ISSUED AS  
06/21/2018  
DATE