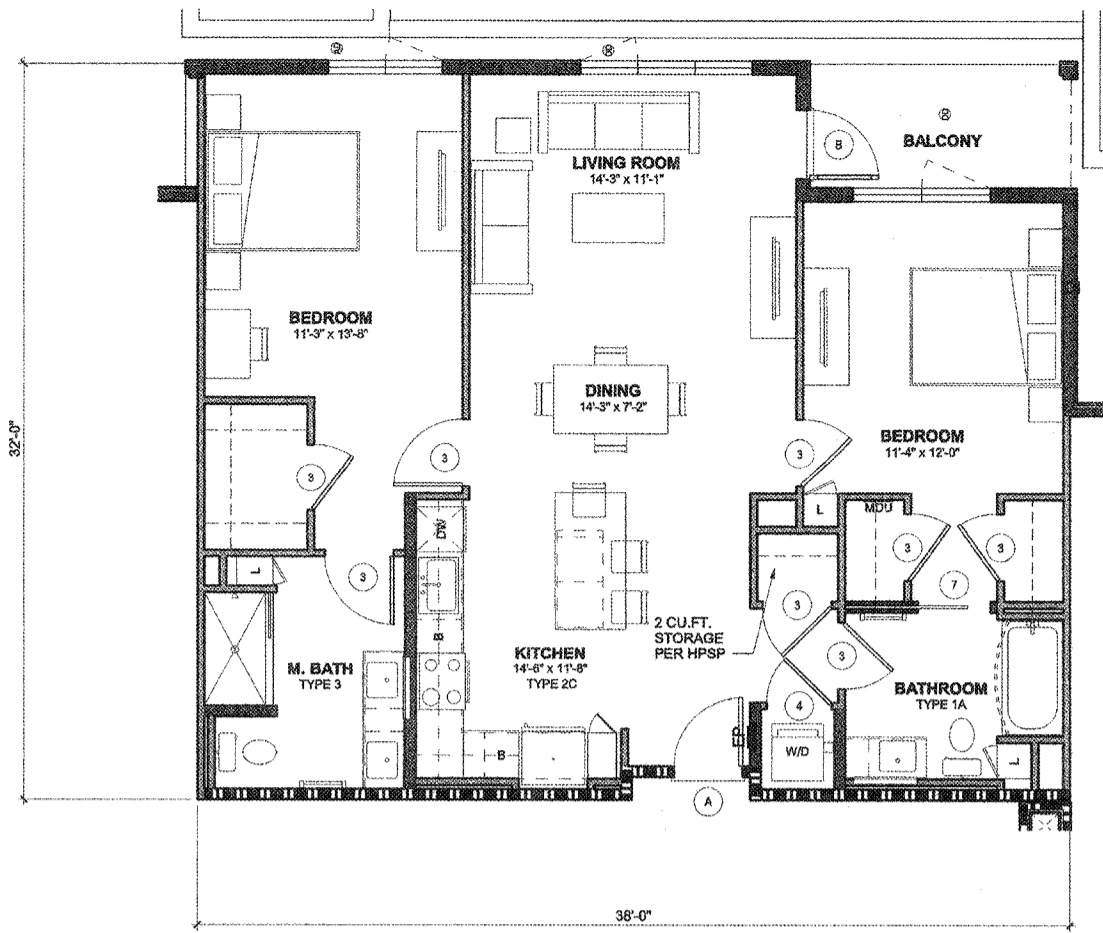
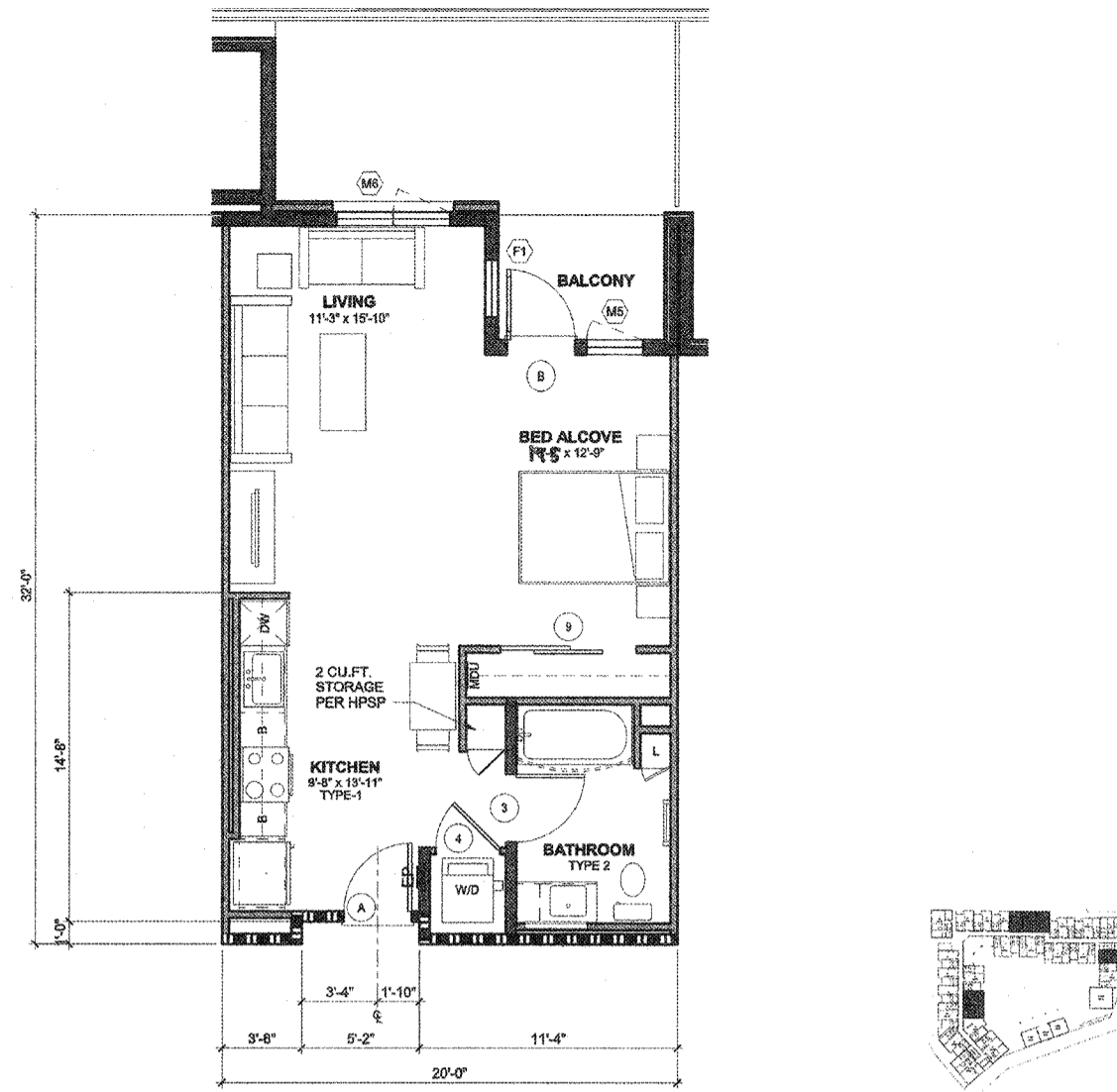


NOTES

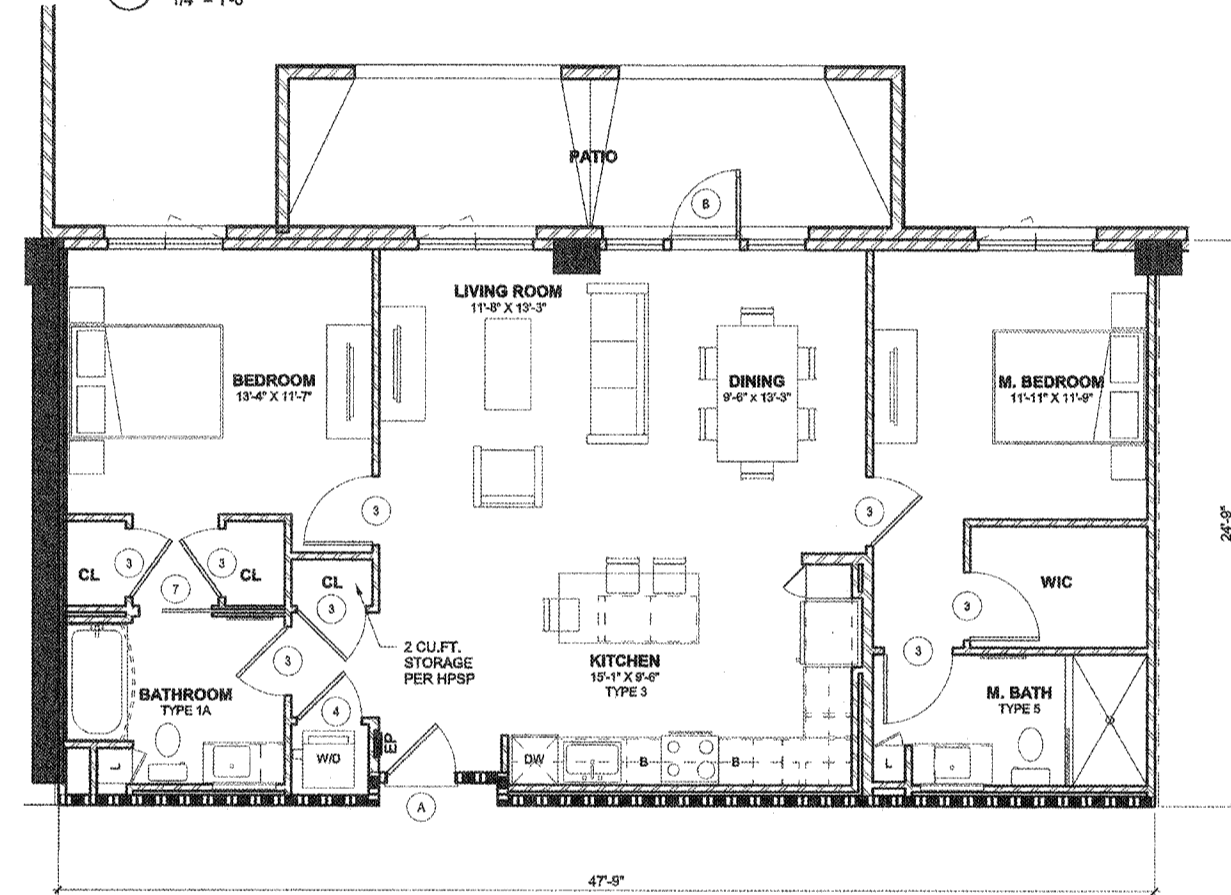
1. INTERIOR NOISE LEVELS ATTRIBUTABLE TO EXTERIOR NOISE WILL NOT EXCEED 45 DECIBELS IN ANY HABITABLE ROOM.



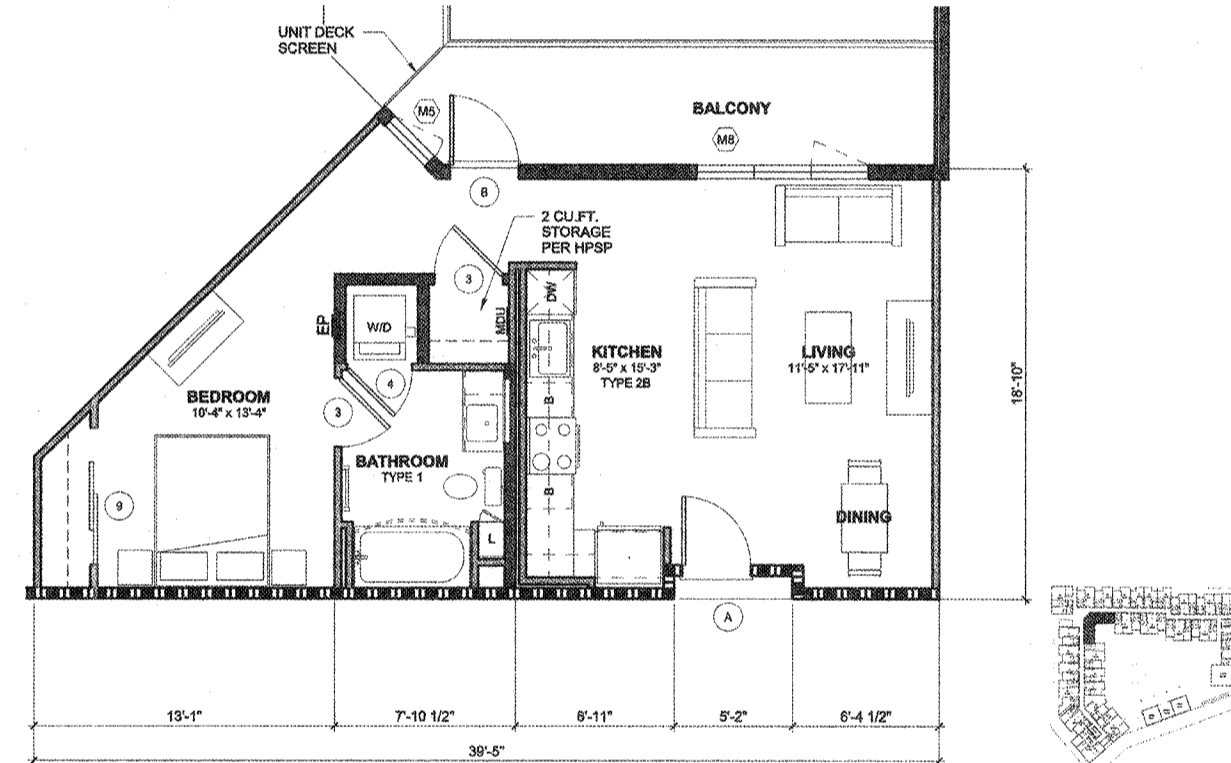
4 UNIT - B1
1/4" = 1'-0"



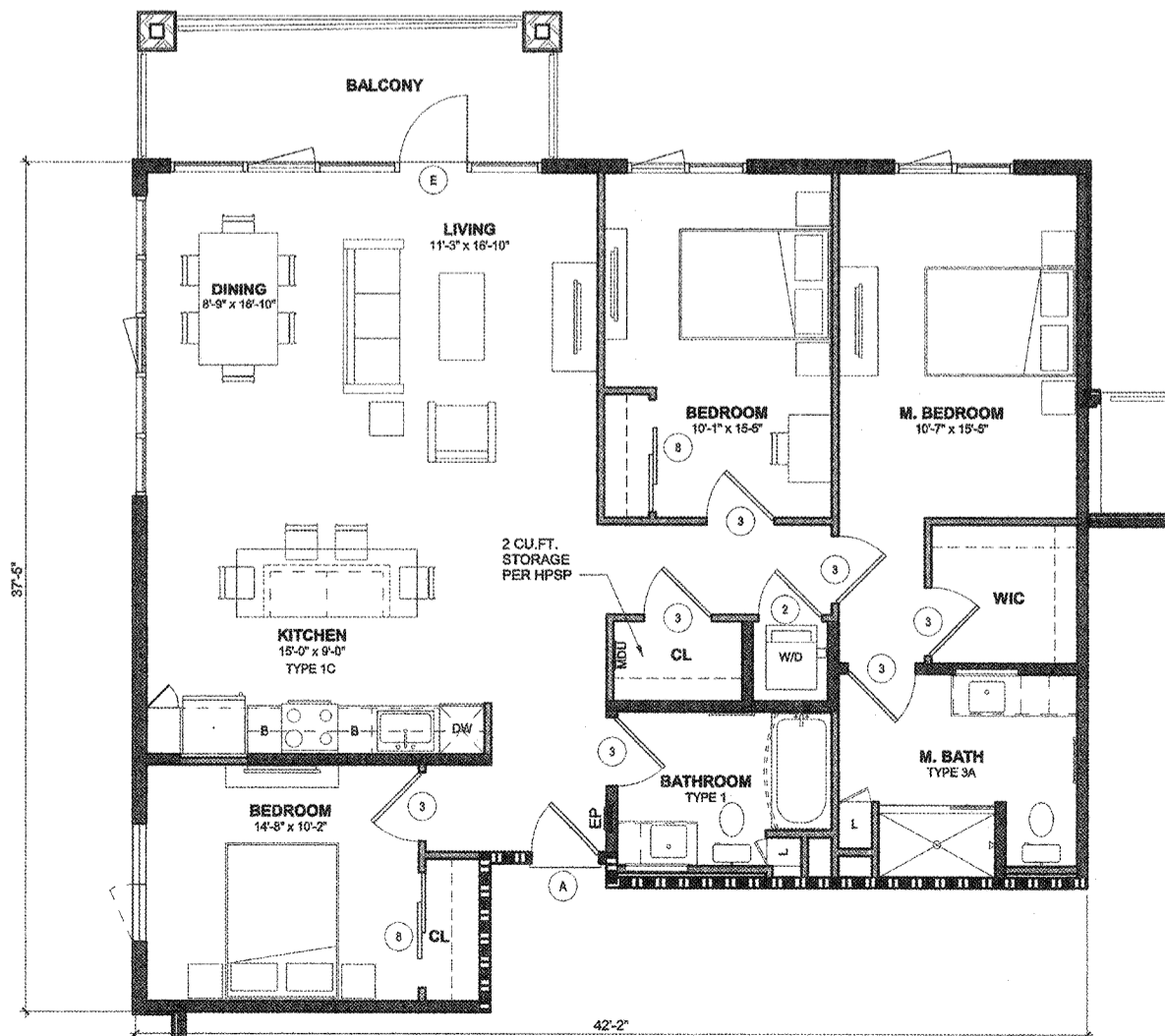
1 UNIT - S1
1/4" = 1'-0"



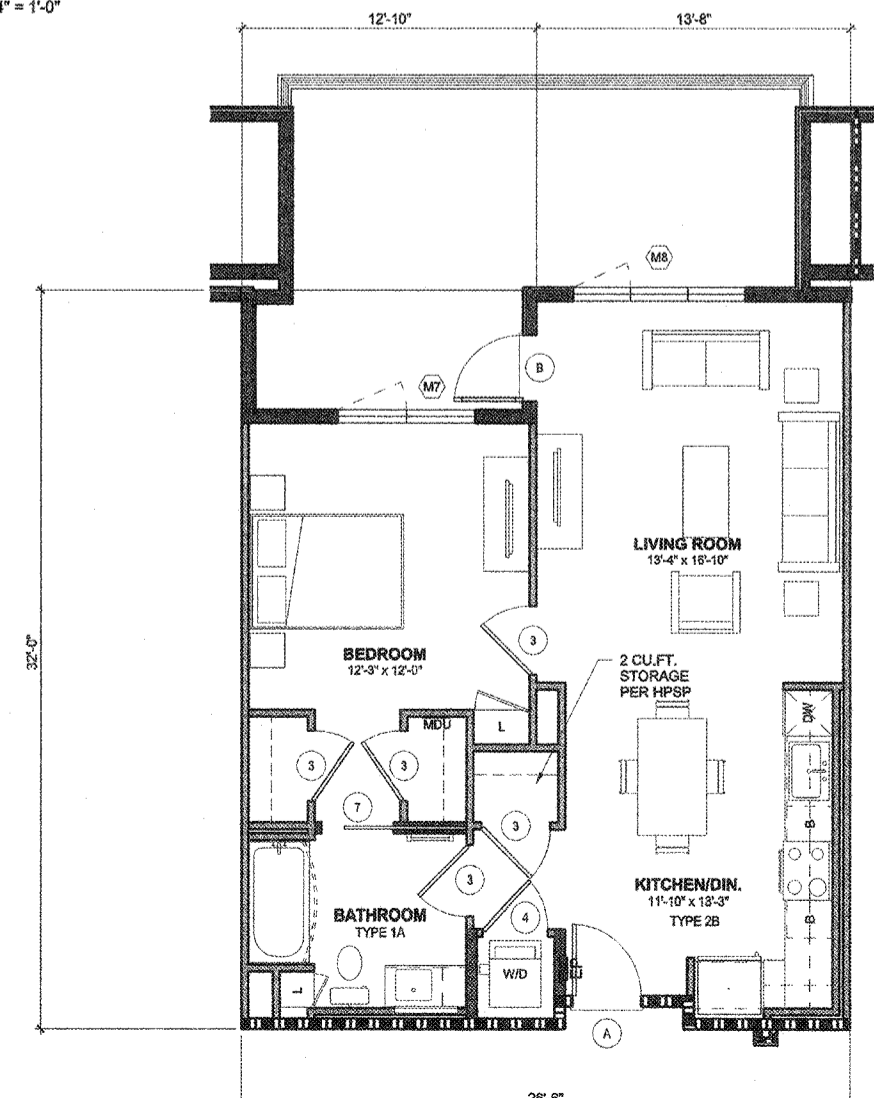
5 UNIT B2
1/4" = 1'-0"



2 UNIT - S2
1/4" = 1'-0"



6 UNIT - C2.1
1/4" = 1'-0"



3 UNIT - A1
1/4" = 1'-0"

DOOR SCHEDULE

MARK	TYPE	WIDTH	HEIGHT	MAT.	F.R.	REMARKS
1	A	2'-0"	6'-8"	WD	NR	FLUSH SOLID
2	A	2'-10"	6'-8"	WD	NR	FLUSH SOLID
3	A	3'-0"	6'-8"	WD	NR	FLUSH SOLID
4	C	2'-10"	6'-8"	WD	NR	FULL LOUVER
5	A-PR	5'-0"	6'-8"	WD	NR	FLUSH SOLID
6	A-PR	6'-0"	6'-8"	WD	NR	FLUSH SOLID
7	E	3'-2"	6'-8"	WD	NR	POCKET DOOR, 34" CLR.
8	D	5'-0"	6'-8"	WD	NR	FLUSH, BI-PASS CLOSET
9	D	6'-0"	6'-8"	WD	NR	FLUSH, BI-PASS CLOSET
11	F	4'-6"	7'-0"	WD	NR	BARN DOOR
13	A	3'-0"	7'-0"	WD	NR	UNIT ENTRY, WITH PEEP HOLE, SMOKE SEAL, STC 30
B	B	3'-0"	6'-0"	FG	NR	FRENCH DOOR, FULL LIGHT, STC 28, 32, 34, 37
C	B	3'-0"	6'-0"	FG	NR	FRENCH DOOR, FULL LIGHT, STC 28, 32, 34, 37
E	H	3'-0"	6'-0"	ALUM	NR	STOREFRONT SYSTEM, STC 32, 34
E	H	3'-0"	6'-7 1/2"	ALUM	NR	STOREFRONT SYSTEM, STC 32, 34
F	H	3'-0"	6'-6"	ALUM	NR	STOREFRONT SYSTEM, STC 32, 34

City of Inglewood - Planning Division
Preliminary Review Only
"PLEASE RETURN THIS SET AND REVISED SET FOR NEXT REVIEW"

REVIEW #	DATE	PLANNER
No. 1		
No. 2		
No. 3		

Address/APN: _____
Zoning/Overlay: _____
Other Info: _____

Please note that this plan has been reviewed based on the information provided by you, the applicant. A more in-depth review may result in a need for additional information or changes to your plan. This stamp acknowledges that we have reviewed your plan and we find that it requires additional information or corrections. These plans have "NOT" been approved by the Planning Division and will require further review. See Specific Comments on plans (in red).

HOLLYWOOD PARK RESIDENTIAL -
MU-2C
INGLEWOOD, CALIFORNIA
HOLLYWOOD PARK RETAIL AND
COMMERCIAL INVESTORS, LLC

UNIT PLANS
NOT FOR CONSTRUCTION

THIS SET OF CONSTRUCTION DOCUMENTS HAS BEEN PREPARED FOR THE CONSTRUCTION OF AN APARTMENT PROJECT.
A4.01*
2017-08-01
2017-08-01
As Indicated
PLOT PLAN
RESUBMITTAL
06/21/2018