

**PROJECT**  
**PROJECT CONDOR**  
**INGLEWOOD, CALIFORNIA**

**DEVELOPER**  
**MURPHY'S BOWL**  
 10400 NE 4th St, Suite 3000  
 Bellevue, WA 98004

**DEVELOPER'S MANAGING AGENT**  
**WILSON MEANY**  
 8701 Center Drive, Suite 950  
 Los Angeles, CA 90045  
 310.382.8000  
 http://wilsonmeany.com/

**ARCHITECT / PLANNING / ENGINEERING / TRANSPORTATION**  
**AECOM**  
 AECOM TECHNICAL SERVICES, INC.  
 2380 McGee, Suite 200  
 Kansas City, MO 64108  
 816.551.4443 tel 816.551.2883 fax  
 www.aecom.com

**CIVIL ENGINEER**  
**D&D ENGINEERING, INC**  
 8600 S. La Cienega Blvd, Suite 106  
 Inglewood, CA 90301  
 424.351.8800 tel

**DRY UTILITY SYSTEMS**  
**BJ PALMER & ASSOCIATES, INC**  
 28245 Crocker Avenue  
 Valencia, CA 91355  
 760.842.7510 tel

**PARKING**  
**WALKER CONSULTANTS**  
 606 S. Olive St, Suite 1100  
 Los Angeles, CA 90014  
 213.488.4911 tel

**SHORING ENGINEER**  
**DRS ENGINEERING, INC**  
 3564 Sagunto Street, Suite 468  
 Santa Ynez, CA 93460  
 818.402.3882 tel

**REGISTRATION**  
 This drawing has been prepared for the use of AECOM's client and may not be used, reproduced or relied upon by third parties, except as agreed by AECOM and its client, as required by law or for use by governmental reviewing agencies. AECOM accepts no responsibility, and denies any liability whatsoever, to any party that modifies this drawing without AECOM's express written consent. Do not scale this document. All measurements must be obtained from the stated dimensions.

**NOT FOR CONSTRUCTION**

**ISSUE/REVISION**

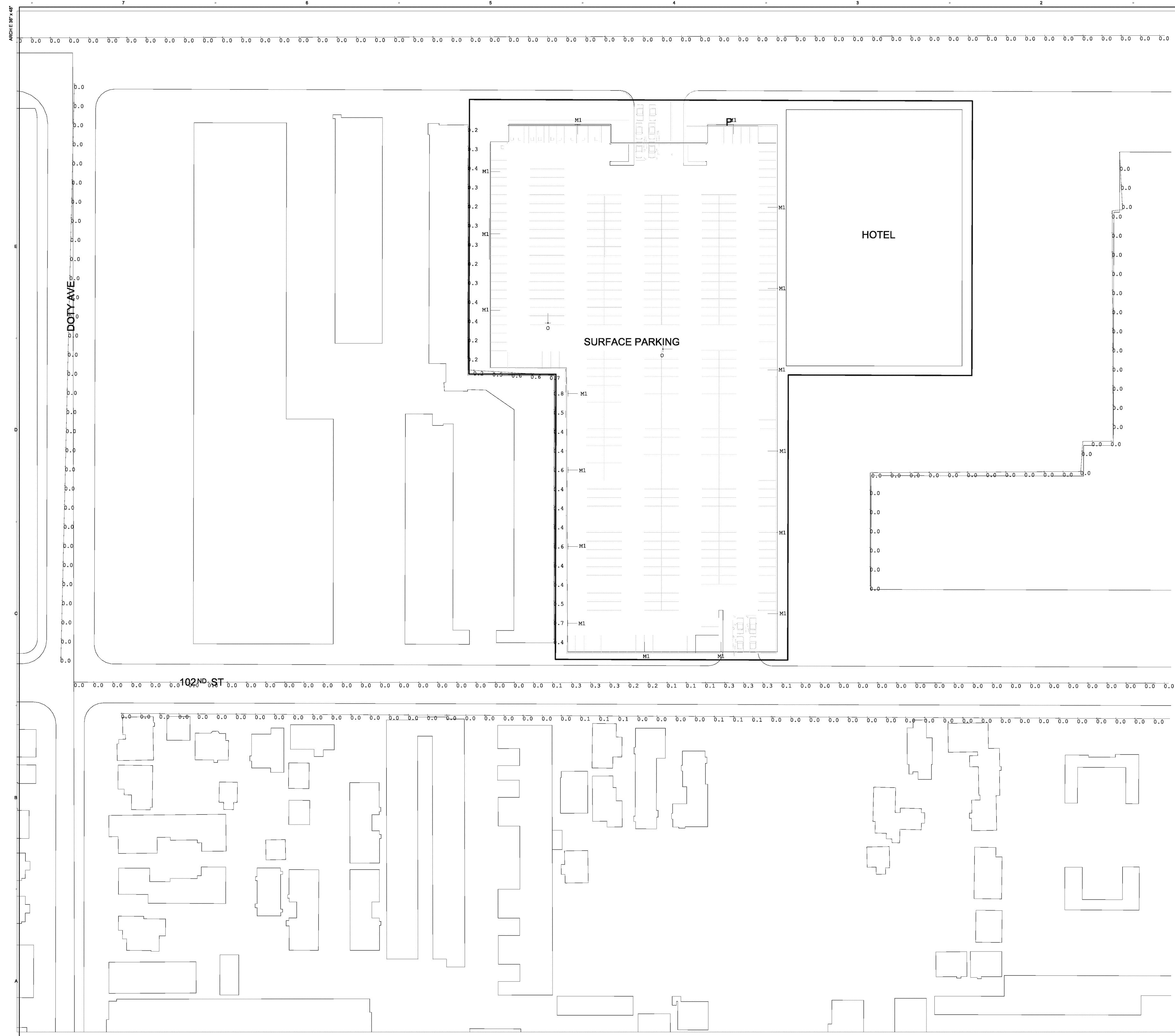
NO.	DATE	DESCRIPTION

**KEY PLAN**

**PROJECT NUMBER**  
 00548923

**SHEET TITLE**  
 EIR MAIN PHOTOMETRICS - ARENA AND GARAGE SOUTH PLAN  
**SHEET NUMBER**  
 E101A

© 2018 AECOM TECHNICAL SERVICES, INC.



**PROJECT**  
**PROJECT CONDOR**  
**INGLEWOOD, CALIFORNIA**

**DEVELOPER**

**MURPHY'S BOWL LLC**  
 10400 NE 4th St, Suite 3000  
 Bellevue, WA 98004

**DEVELOPER'S MANAGING AGENT**

**WILSON MEANY**  
 8701 Center Drive, Suite 950  
 Los Angeles, CA 90045  
 310.582.9000 tel  
<http://wilsonmeany.com/>

**ARCHITECT / PLANNING / ENGINEERING / TRANSPORTATION**

**AECOM**  
 AECOM TECHNICAL SERVICES, INC.  
 2380 McGee, Suite 200  
 Kansas City, MO 64108  
 816.551.4443 tel 816.551.2883 fax  
[www.aecom.com](http://www.aecom.com)

**CIVIL ENGINEER**

**D&D ENGINEERING, INC**  
 8801 S. La Cienega Blvd, Suite 100  
 Inglewood, CA 90504  
 424.351.8800 tel

**DRY UTILITY SYSTEMS**

**BJ PALMER & ASSOCIATES, INC**  
 28245 Crocker Avenue  
 Valencia, CA 91355  
 760.842.7510 tel

**PARKING**

**WALKER CONSULTANTS**  
 606 S. Olive St, Suite 1100  
 Los Angeles, CA 90014  
 213.488.4911 tel

**SHORING ENGINEER**

**DRS ENGINEERING, INC**  
 3564 Sagunto Street, Suite 468  
 Santa Ynez, CA 93460  
 818.402.3882 tel

**REGISTRATION**

This drawing has been prepared for the use of AECOM's client and may not be used, reproduced or relied upon by third parties, except as agreed by AECOM and its client, as required by law or for use by governmental reviewing agencies. AECOM accepts no responsibility, and denies any liability whatsoever, to any party that modifies this drawing without AECOM's express written consent. Do not scale this document. All measurements must be obtained from the stated dimensions.

**NOT FOR CONSTRUCTION**

**ISSUE/REVISION**

NO.	DATE	DESCRIPTION

**KEY PLAN**



**PROJECT NUMBER**

6054823

**SHEET TITLE**

EIR MAIN PHOTOMETRICS - EAST SURFACE PARKING PLAN

**SHEET NUMBER**

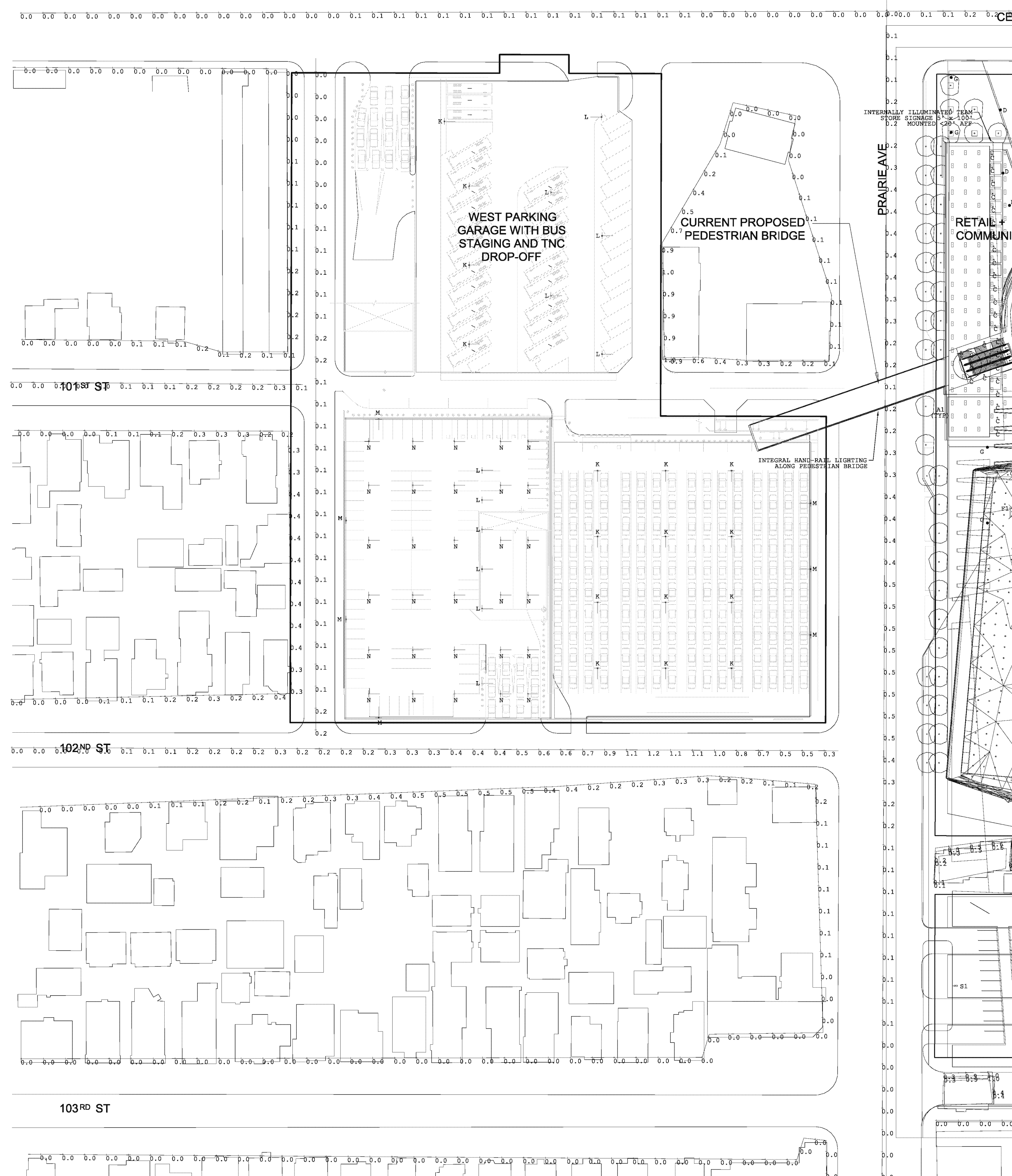
**E102A**

© 2018 AECOM TECHNICAL SERVICES, INC.

Project Management: [illegible]  
 Lead: [illegible]  
 Title: [illegible]

**EIR MAIN PHOTOMETRICS - EAST SURFACE PARKING PLAN**  
 1/32" = 1'-0"

ARCHIE 3P1-AF  
Project Management: Initial  
Last Printed: 11/14/18  
Printed on Plot ColorStar  
Resized Current Paper



**PROJECT**  
PROJECT CONDOR  
INGLEWOOD, CALIFORNIA

**DEVELOPER**  
MURPHY'S BOWL  
LLC  
10400 NE 4th St, Suite 3000  
Bellevue, WA 98004

**DEVELOPER'S MANAGING AGENT**  
WILSON MEANY  
1  
8701 Center Drive, Suite 950  
Los Angeles, CA 90045  
910 382 8000 tel  
http://wilsonmeany.com/

**ARCHITECT / PLANNING /  
ENGINEERING / TRANSPORTATION**  
AECOM  
AECOM TECHNICAL SERVICES, INC.  
2380 McGee, Suite 200  
Kansas City, MO 64108  
816 561 4443 tel 816 561 2863 fax  
www.aecom.com

**CIVIL ENGINEER**  
D&D  
ENGINEERING, INC  
8901 S. La Cienega Blvd, Suite 106  
Inglewood, CA 90501  
424 351 8800 tel

**DRY UTILITY SYSTEMS**  
BJ PALMER &  
ASSOCIATES, INC  
28245 Crocker Avenue  
Valencia, CA 91355  
760 842 7510 tel

**PARKING**  
WALKER  
CONSULTANTS  
806 S. Olive St, Suite 1100  
Los Angeles, CA 90014  
213 488 4911 tel

**SHORING ENGINEER**  
DRS  
ENGINEERING, INC  
3564 Sagunto Street, Suite 468  
Santa Ynez, CA 93460  
818 422 3852 tel

**REGISTRATION**  
This drawing has been prepared for the use of  
AECOM's client and may not be used, reproduced or  
relied upon by third parties, except as agreed by  
AECOM and its client, as required by law or for use by  
governmental reviewing agencies. AECOM accepts  
no responsibility, and denies any liability whatsoever,  
to any party that modifies this drawing without  
AECOM's express written consent. Do not scale this  
drawing. All measurements must be obtained from  
the stated dimensions.

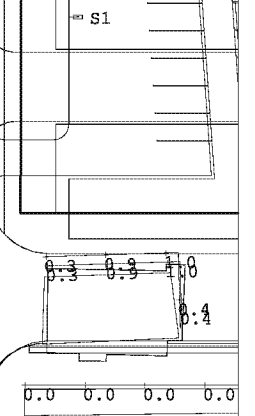
**NOT FOR  
CONSTRUCTION**

**ISSUE/REVISION**

NO.	DATE	DESCRIPTION

SEP 14 2018 EIR DOCUMENTS  
U/I DATE DESCRIPTION

**KEY PLAN**



**PROJECT NUMBER**  
60548923

**SHEET TITLE**  
EIR MAIN PHOTOMETRICS - WEST  
PARKING GARAGE PLAN

**SHEET NUMBER**  
E103A

1 EIR MAIN PHOTOMETRICS - WEST PARKING GARAGE, BUS AND TNC DROP-OFF PLAN  
1/32" = 1'-0"

DEVELOPER

MURPHY'S BOWL  
LLC  
10400 NE 4th St, Suite 3000  
Bellevue, WA 98004

DEVELOPER'S MANAGING AGENT

WILSON MEANY  
18701 Center Drive, Suite 950  
Los Angeles, CA 90045  
310.582.8000  
http://wilsonmeany.com/

ARCHITECT / PLANNING /  
ENGINEERING / TRANSPORTATION

AECOM

AECOM TECHNICAL SERVICES, INC.  
2380 McGee, Suite 200  
Kansas City, MO 64108  
816.561.4443 | 816.561.2883 fax  
www.aecom.com

CIVIL ENGINEER

D&D  
ENGINEERING, INC  
8601 S. La Cienega Blvd, Suite 106  
Inglewood, CA 90201  
424.351.8800 tel

DRY UTILITY SYSTEMS

BJ PALMER &  
ASSOCIATES, INC  
2834 Crocker Avenue  
Valencia, CA 91355  
760.842.7510 tel

PARKING

WALKER  
CONSULTANTS  
606 S. Olive St, Suite 1100  
Los Angeles, CA 90014  
310.488.4911 tel

SHORING ENGINEER

DRS  
ENGINEERING, INC  
3564 Sagunto Street, Suite 468  
Santa Ynez, CA 93460  
818.402.3887 tel

REGISTRATION

This drawing has been prepared for the use of AECOM's client and may not be used, reproduced or relied upon by third parties, except as agreed by AECOM and its client, as required by law or for use by governmental reviewing agencies. AECOM accepts no responsibility, and denies any liability whatsoever, to any party that modifies this drawing without AECOM's express written consent. Do not scale this document. All measurements must be obtained from the stated dimensions.

NOT FOR  
CONSTRUCTION

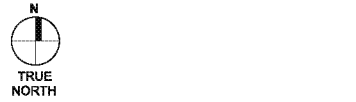
ISSUE/REVISION

NO.	DATE	DESCRIPTION

SEP. 14. 2018 EIR DOCUMENTS

IRI DATE DESCRIPTION

KEY PLAN



PROJECT NUMBER

60548923

SHEET TITLE

EIR MAIN PHOTOMETRICS -

SCHEDULES

SHEET NUMBER

E104A

© 2018 AECOM TECHNICAL SERVICES, INC.

Label	CalcType	Units	Avg	Max	Min	Avg/Min	Max/Min
101st St_1	Illuminance	Fc	0.09	0.2	0.0	N.A.	N.A.
101st St_2	Illuminance	Fc	0.11	0.3	0.0	N.A.	N.A.
102nd St_1	Illuminance	Fc	0.42	1.2	0.0	N.A.	N.A.
102nd St_2	Illuminance	Fc	0.05	0.3	0.0	N.A.	N.A.
Century Blvd_1	Illuminance	Fc	0.06	0.6	0.0	N.A.	N.A.
Doty Ave_1	Illuminance	Fc	0.00	0.0	0.0	N.A.	N.A.
East Property Line_1	Illuminance	Fc	0.01	0.1	0.0	N.A.	N.A.
East Property Line_2	Illuminance	Fc	0.01	0.1	0.0	N.A.	N.A.
North Property Line_1	Illuminance	Fc	0.00	0.0	0.0	N.A.	N.A.
North Property Line_2	Illuminance	Fc	0.00	0.0	0.0	N.A.	N.A.
Northeast Property Line_1	Illuminance	Fc	0.02	0.2	0.0	N.A.	N.A.
Northeast Property Line_2	Illuminance	Fc	0.41	0.8	0.2	2.05	4.00
Northeast Property Line_3	Illuminance	Fc	0.00	0.0	0.0	N.A.	N.A.
Northwest Property Line_1	Illuminance	Fc	0.00	0.0	0.0	N.A.	N.A.
Prairie Ave_1	Illuminance	Fc	0.10	0.5	0.0	N.A.	N.A.
Southwest Property Line_1	Illuminance	Fc	0.34	0.6	0.1	3.40	6.00
Southwest Property Line_2	Illuminance	Fc	0.65	1.0	0.3	2.17	3.33
Southwest Property Line_3	Illuminance	Fc	0.00	0.0	0.0	N.A.	N.A.
Southwest Property Line_4	Illuminance	Fc	0.11	0.5	0.0	N.A.	N.A.
South Property Line	Illuminance	Fc	0.00	0.0	0.0	N.A.	N.A.
West Property Line_1	Illuminance	Fc	0.21	0.4	0.0	N.A.	N.A.
West Property Line_2	Illuminance	Fc	0.06	0.2	0.0	N.A.	N.A.
West Property Line_3	Illuminance	Fc	0.32	1.0	0.0	N.A.	N.A.

LIGHTING FIXTURE SCHEDULE

TYPE	MANUFACTURER	CATALOG NUMBER	LAMP	WATTS	COLOR TEMP	VOLTS	MOUNTING	DESCRIPTION	BALLAST/DIMMING
A/A1	HE WILLIAMS LIGHTING	LT-24-L52-AF-XXX-XXX	LED	38W, 5358LM	4000K	UNV	RECESS-LAY-IN CLG	RECESS MOUNTED 2'X4' LED TROFFER WITH INDIRECT/DIRECT OPTICS (INTERIOR LIGHT FIXTURE ONLY)	0-10V DIMMING ELECTRONIC DRIVER
B	SPECGRADE LED	AFL-300-XXXX-60X60	LED	333W, 35412LM	4000K	277	SURFACE	LED SPORTS FLOOD LIGHT FIXTURE: ADJUSTABLE VERTICAL HORIZONTAL YOKE, VISOR, ANTI-GLARE LENS, 100% DOWN. SKY COURSE BASKETBALL COURT LIGHTING	0-10V DIMMING ELECTRONIC DRIVER
C/C1	EATON-METALUX	TBLED-LD1-8-M-UNV-L840-CD1-CG	LED	77 W, 8225 LM	4000K	UNV	SURFACE MOUNT	SURFACE MOUNT LED LOW-BAY LIGHT FIXTURE WITH LOW PROFILE HOUSING, 100% CUT-OFF, DIRECT OPTICS. OUTDOOR CANOPY LIGHTING	0-10V DIMMING ELECTRONIC DRIVER
D	LUMINIS	MA21-L3W46-R5	LED	139W, 12640LM	4000K	277	POLE/WALL MOUNT	POST TOP LED PEDESTRIAN LIGHT FIXTURE WITH 100% CUT-OFF, 12'-0" POLE, AND TYPE V DISTRIBUTION OPTICS. FOR SIDEWALK AND PEDESTRIAN WAYS LIGHTING.	0-10V DIMMING ELECTRONIC DRIVER
F/F1	FC LIGHTING	FCP1106-120V-4K-40 DEGREE	LED	43W, 4675LM	4000K	277	GROUND MOUNT	SMALL LED SPOT LIGHT WITH TIGHT 5° OPTIC DISTRIBUTION FOR FLOOD LIGHTING LANDSCAPING AND TREES.	0-10V DIMMING ELECTRONIC DRIVER
G	LUMINIS	MA21-L3W30-r1-R4	LED	136W, 12378LM	4000K	277	POLE/WALL MOUNT	POST TOP LED PEDESTRIAN LIGHT FIXTURE WITH 100% CUT-OFF, 12'-0" POLE, AND TYPE IV DISTRIBUTION OPTICS. FOR SIDEWALK AND PEDESTRIAN WAYS LIGHTING	0-10V DIMMING ELECTRONIC DRIVER
H	SPECGRADE LED	PRO-240-XXXX-7	LED	223.4W, 17800LM	4000K	UNV	SURFACE MOUNT	LED SPORTS FLOOD LIGHT FIXTURE: ADJUSTABLE VERTICAL HORIZONTAL YOKE, VISOR, ANTI-GLARE LENS. EXTERIOR BASKETBALL LIGHTING	0-10V DIMMING ELECTRONIC DRIVER
J	SPECGRADE LED	SPL-400-XXXX-30X30	LED	443W, 48008LM	4000K	UNV	SURFACE MOUNT	LED SPORTS FLOOD LIGHT FIXTURE: ADJUSTABLE VERTICAL HORIZONTAL YOKE, VISOR, ANTI-GLARE LENS. EXTERIOR BASKETBALL LIGHTING	0-10V DIMMING ELECTRONIC DRIVER
K	PHILIPS GARDCO	ECF-S-64L-1A-NW-G2-5W	LED	206W, 25577LM	4000K	UNV	POLE/WALL MOUNT	LED ROADWAY/PARKING LOT POLE LIGHT FIXTURE WITH 100% CUT-OFF, BUG RATED, 25'-0" POLE, AND TYPE V DISTRIBUTION OPTICS	0-10V DIMMING ELECTRONIC DRIVER
L	PHILIPS GARDCO	ECF-S-48L-900-NW-G2-5W	LED	135W, 17154LM	4000K	UNV	POLE/WALL MOUNT	LED ROADWAY/PARKING LOT POLE LIGHT FIXTURE WITH 100% CUT-OFF, BUG RATED, 25'-0" POLE, AND TYPE V DISTRIBUTION OPTICS	0-10V DIMMING ELECTRONIC DRIVER
M/M1	PHILIPS GARDCO	ECF-S-32L-700-NW-G2-3	LED	73W, 8661LM	4000K	UNV	POLE/WALL MOUNT	LED ROADWAY/PARKING LOT POLE LIGHT FIXTURE WITH 100% CUT-OFF, BUG RATED, 25'-0" POLE, AND TYPE III DISTRIBUTION OPTICS	0-10V DIMMING ELECTRONIC DRIVER
N	PHILIPS GARDCO	G3-5-16L-1000-NW-G2	LED	57W, 3645LM	4000K	UNV	SURFACE MOUNT	GARAGE/CANOPY LED LIGHT FIXTURE WITH 100% CUTOFF, BUG RATED, AND SURFACE MOUNTED IN PARKING GARAGES FOR 100% DIRECT DOWN DISTRIBUTION	0-10V DIMMING ELECTRONIC DRIVER
O	PHILIPS GARDCO	ECF-S-32L-700-NW-G2-5W	LED	73W, 9255LM	4000K	UNV	POLE/WALL MOUNT	LED ROADWAY/PARKING LOT POLE LIGHT FIXTURE WITH 100% CUT-OFF, BUG RATED, 25'-0" POLE, AND TYPE V DISTRIBUTION OPTICS	0-10V DIMMING ELECTRONIC DRIVER
P	PHILIPS GARDCO	ECF-S-64L-1A-NW-G2-3	LED	206W, 23936LM	4000K	UNV	POLE/WALL MOUNT	LED ROADWAY/PARKING LOT POLE LIGHT FIXTURE WITH 100% CUT-OFF, BUG RATED, 25'-0" POLE, AND TYPE III DISTRIBUTION OPTICS	0-10V DIMMING ELECTRONIC DRIVER
Q	PHILIPS GARDCO	ECF-L-80L-1_2A-NW-G2-4	LED	290W, 33814LM	4000K	UNV	POLE/WALL MOUNT	LED ROADWAY/PARKING LOT POLE LIGHT FIXTURE WITH 100% CUT-OFF, BUG RATED, 25'-0" POLE, AND TYPE IV DISTRIBUTION OPTICS	0-10V DIMMING ELECTRONIC DRIVER
R	PHILIPS GARDCO	ECF-L-80-1_2A-NW-G2-3	LED	290W, 33205LM	4000K	UNV	POLE/WALL MOUNT	LED ROADWAY/PARKING LOT POLE LIGHT FIXTURE WITH 100% CUT-OFF, BUG RATED, 25'-0" POLE, AND TYPE III DISTRIBUTION OPTICS	0-10V DIMMING ELECTRONIC DRIVER
S/S1	PHILIPS GARDCO	ECF-L-80L-1_2A-NW-G2-2	LED	290W, 33763W	4000K	UNV	POLE/WALL MOUNT	LED ROADWAY/PARKING LOT POLE LIGHT FIXTURE WITH 100% CUT-OFF, BUG RATED, 25'-0" POLE, AND TYPE II DISTRIBUTION OPTICS	0-10V DIMMING ELECTRONIC DRIVER
T/T1	PHILIPS GARDCO	ECF-S-32L-1_2A-NW-G2-3	LED	122W, 13526LM	4000K	UNV	POLE/WALL MOUNT	LED ROADWAY/PARKING LOT POLE LIGHT FIXTURE WITH 100% CUT-OFF, BUG RATED, 25'-0" POLE, AND TYPE III DISTRIBUTION OPTICS	0-10V DIMMING ELECTRONIC DRIVER
U/U1	PHILIPS GARDCO	ECF-S-32L-1_2A-NW-G2-4	LED	122W, 14151LM	4000K	UNV	ARM/WALL MOUNT	LED ROADWAY/PARKING LOT POLE LIGHT FIXTURE WITH 100% CUT-OFF, BUG RATED, 25'-0" POLE, AND TYPE IV DISTRIBUTION OPTICS	0-10V DIMMING ELECTRONIC DRIVER
V	PHILIPS GARDCO	G3-5DL-32L-600-NW-G2	LED	20W/LE, 693LM/FT	4000K	UNV	SURFACE MOUNT	GARAGE/CANOPY LED LIGHT FIXTURE WITH 100% CUTOFF, BUG RATED, AND SURFACE MOUNTED IN PARKING GARAGES FOR 100% DIRECT DOWN DISTRIBUTION	0-10V DIMMING ELECTRONIC DRIVER
W	ACCLAIM LIGHTING	DGH-241-DSLIN	LED	20W/LE, 693LM/FT	RGBW	UNV	SURFACE MOUNT	EXTERIOR RATED LINEAR RGB COLOR-CHANGING LED WALL WASH FIXTURE TO BE MOUNTED BEHIND ARENA PERFORATED FACADE TO CREATE GLOWING EFFECT	DMX DIMMING ELECTRONIC DRIVER
X	ACCLAIM LIGHTING	FLEXSI	LED	4.5W/LE, 226LM/FT	RGBW	UNV	SURFACE MOUNT	EXTERIOR RATED LINEAR RGB COLOR-CHANGING LED TAPE TO BE MOUNTED BEHIND PERFORATED CYLINDER ELEMENT AT CENTER OF SKY COURSE TO CREATE GLOWING.	DMX DIMMING ELECTRONIC DRIVER
Y	COOPER LIGHTING	LUXRAIL 0.068SS.2.WM.AC.25.35KH0.GB4.2	LED	3.81W/LE, 226LM/FT	4000K	UNV	HANDRAIL-INTEGRAL	EXTERIOR RATED LINEAR RGB COLOR-CHANGING LED TAPE TO BE MOUNTED BEHIND PERFORATED CYLINDER ELEMENT AT CENTER OF SKY COURSE TO CREATE GLOWING.	0-10V DIMMING ELECTRONIC DRIVER

- EXIT SIGNS DIRECTION OF FIELD INSTALLED CHEVRONS TO BE COORDINATED WITH ARCHITECTURAL/ELECTRICAL DRAWINGS. PROVIDE 15% EXTRA OF QUANTITY SHOWN IN PLANS FOR EACH TYPE OF EXIT SIGN, AND NO LESS THAN 1 FOR EACH TYPE.
- ALL FIXTURES SHALL BE SUPPLIED WITH LAMPS AND ALL EQUIPMENT FOR A COMPLETE INSTALLATION. FIRST LISTED FIXTURE TO BE USED FOR ALL BASIS OF DESIGN DECISIONS. SECONDARY FIXTURE LISTED MAY NOT INCLUDE ALL FIXTURES REQUIRED FOR A COMPLETE WORKING SYSTEM.
- LIGHTING FIXTURE CATALOG NUMBERS AND DESCRIPTION ARE SCHEDULED FOR ESTABLISHING QUALITY, APPEARANCE, AND PERFORMANCE OF THE LISTED FIXTURE. EXACT CATALOG NUMBERS DESCRIBING MOUNTING CONDITIONS AND REQUIREMENTS RELATED TO THEM FOR ALL FIXTURES SHALL BE CONFIRMED BY THE ELECTRICAL CONTRACTOR, WITH THE ROOM FINISH SCHEDULE AND REFLECTED CEILING PLANS IN THE ARCHITECTURAL PLANS PRIOR TO BIDDING. FIXTURES SHALL BE SUBMITTED ACCORDING TO THE CONDITIONS INDICATED IN THE ARCHITECTURAL PLANS REFER TO WRITTEN SPECIFICATIONS FOR ADDITIONAL REQUIREMENTS.
- REFER TO SPECIFICATION SECTION 26 5100 INTERIOR LIGHTING FOR ADDITIONAL REQUIREMENTS.
- FOR ALL CONTINUOUS RUNS OF LIGHT FIXTURES, COORDINATE EXACT QUANTITY AND LENGTH WITH ARCHITECTURAL DRAWINGS TO CREATE CLEAN, CONTINUOUS LENGTH OF LIGHT OUTPUT.
- FIXTURE LABELS WITH SUBSCRIPT 'C' IN LIGHTING PLANS SIGNIFIES FIXTURE TO BE PROVIDED WITH 90-MINUTE BACK-UP BATTERY BALLAST.
- DIMMABLE FIXTURES TO BE PROVIDED WITH ALL REQUIRED BALLASTS, DIMMING INTERFACES AND CIRCUITRY TO CREATE A COMPLETE WORKING SYSTEM AND SHALL BE PROGRAMMED PER ENGINEER'S AND OWNER'S REQUIREMENTS.
- FIXTURES LABELS WITH SUBSCRIPT 'D' IN LIGHTING PLANS SIGNIFIES FIXTURE TO BE PROVIDED WITH DIMMABLE BALLAST OR DRIVER.
- FIXTURES NOTATED WITH (C) ARE EXISTING TO REMAIN. FIXTURES NOTATED WITH (D) ARE EXISTING TO BE DEMOLISHED. FIXTURES NOTATED (N) ARE NEW FIXTURES TO MATCH EXISTING FIXTURES IN AREA SIMILAR IN FORM AND FUNCTION REQUIRED.
- FOR ALL SPURS LIGHTING FIXTURES (SP), FIRST FIXTURE LISTED WITH LAYOUTS SHOWN IN PLAN REPRESENT BASIS OF DESIGN. ALL ALTERNATE FIXTURES LISTED SHALL REQUIRE NEW LAYOUTS AND QUANTITIES TO MATCH LIGHTING REQUIREMENTS. IF ALTERNATE FIXTURE PACKAGES ARE SUBMITTED, NEW LIGHTING LAYOUTS WITH ILLUMINANCE CALCULATIONS SHALL BE PROVIDED TO VERIFY EQUIVALENCY TO BASIS OF DESIGN CALCULATIONS TO BE COMPLETED IN AG32 (OR EQUIVALENT LIGHTING CALCULATION SOFTWARE). CONTRACTOR TO COORDINATE ANY STRUCTURAL OR ARCHITECTURAL CHANGES ADDITIONAL FIXTURES OR ALTERNATE MOUNTING OPTIONS MAY INCUR.