






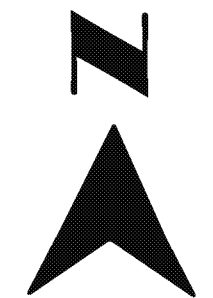
**A+ TRAFFIC MANAGEMENT, INC**

213. 494. 7154

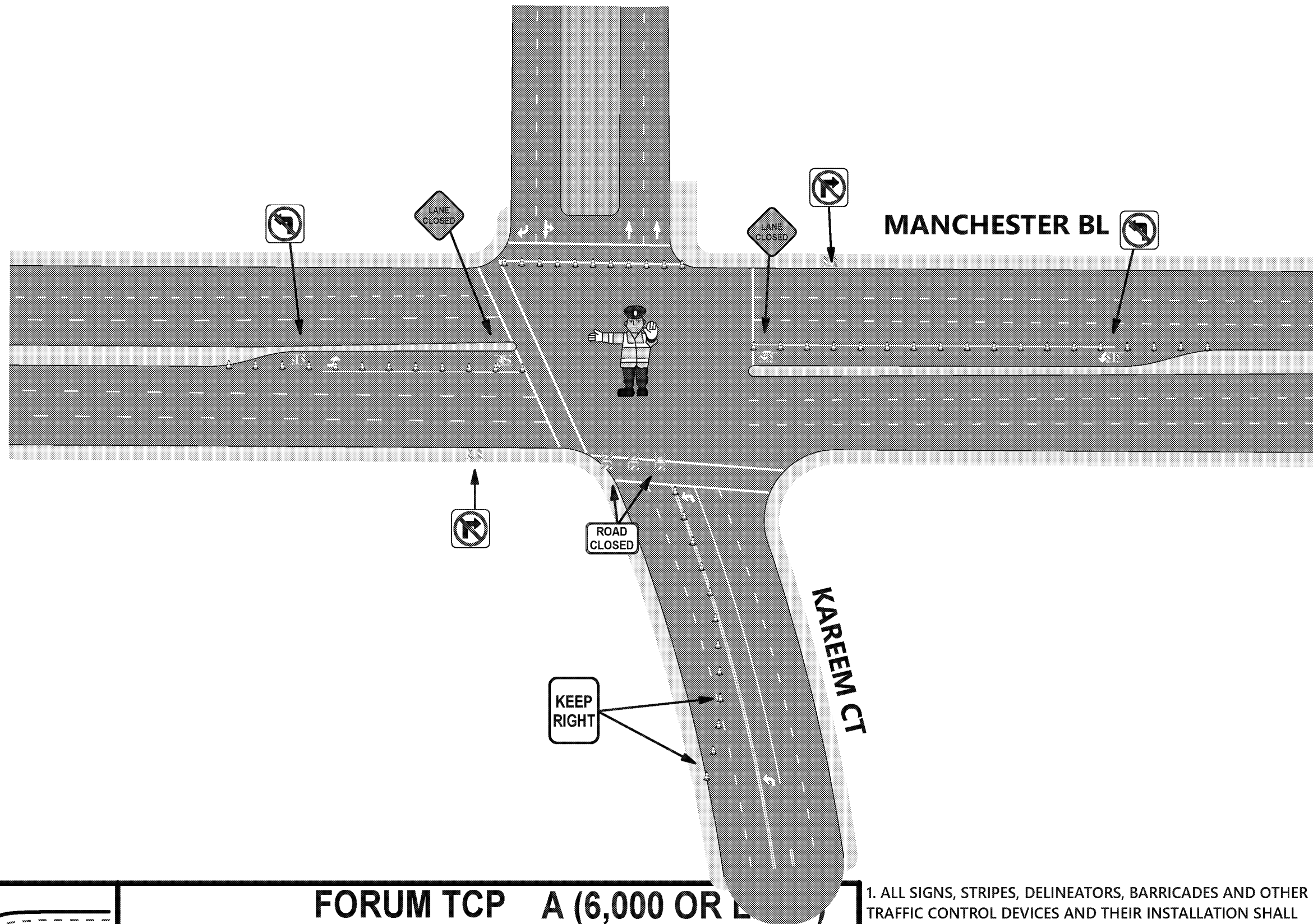
Traffic Control Services  
Equipment Rentals  
Permits & Consulting  
Traffic Engineering

**LEGEND**

- ROAD CLOSED 
- R11-2 
-  R3-1
- W20-3 
-  R3-2
- C30(CA)



**CEMETARY CLOSED**



**FORUM TCP A (6,000 OR L)**

SCALE: NOT TO SCALE	DRAWN BY: S.F.
DATE:	VERSION#:1
<b>KAREEM &amp; MANCHESTER BL OUTBOUND</b>	
© A+ TRAFFIC MANAGEMENT INC, 2018 - 2019. ALL RIGHTS RESERVED	SHEET NO: <b>7 OF 11</b>

1. ALL SIGNS, STRIPES, DELINEATORS, BARRICADES AND OTHER TRAFFIC CONTROL DEVICES AND THEIR INSTALLATION SHALL CONFORM TO THE LATEST EDITIONS OF THE FOLLOWING DOCUMENTS: THE STATE OF CALIFORNIA STANDARD SPECIFICATIONS, AND THE CALIFORNIA MANUAL ON UNIFORM TRAFFIC CONTROL DEVICES. IN THE EVENT OF CONFLICT BETWEEN THESE TWO DOCUMENTS, THE MOST STRINGENT REQUIREMENT SHALL APPLY. SIGN SIZES SHALL BE THOSE SHOWN AS "STANDARD", OR LARGER, IN THE CALIFORNIA MANUAL ON UNIFORM TRAFFIC CONTROL DEVICES.

**A+ TRAFFIC MANAGEMENT, INC**  
OFFICE: (213) 747-0215