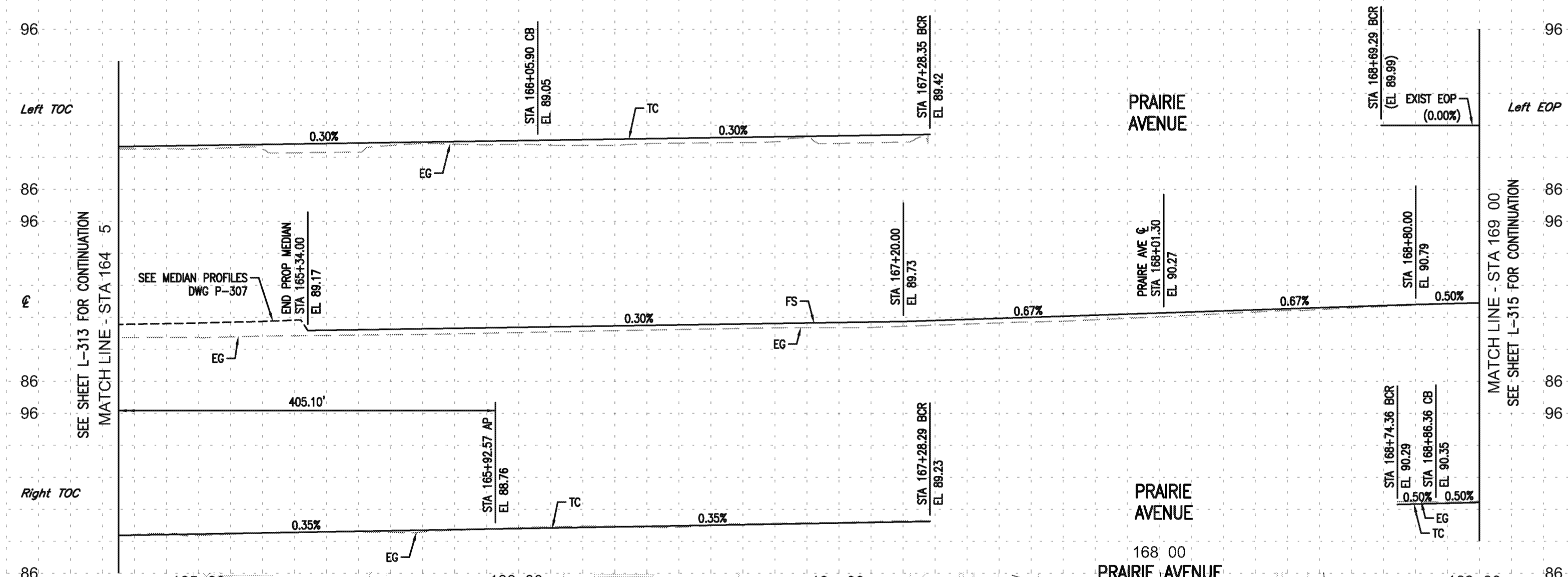


ST-4696

ST-4696

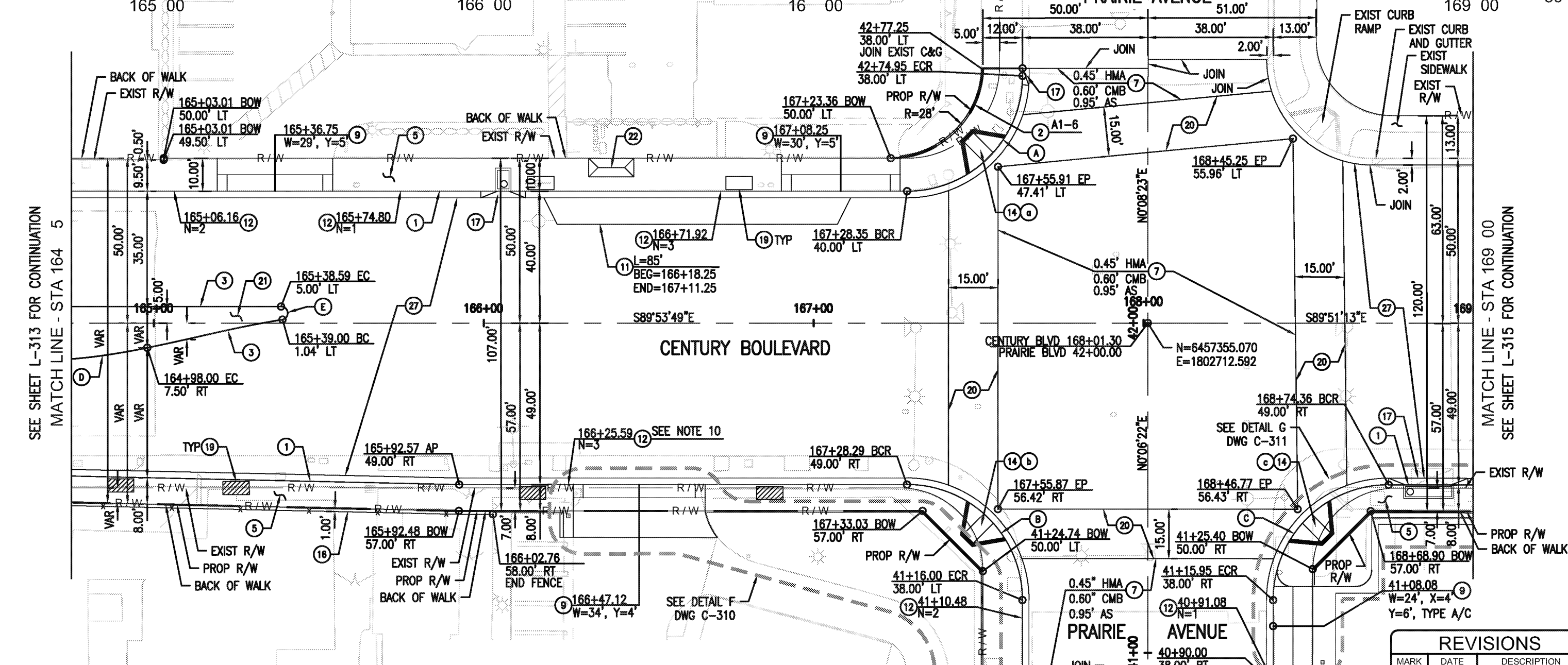
ST-4696

ST-4696



- NOTES:**
1. ALL CURB AND GUTTER ARE TYPE A2-6 UNLESS OTHERWISE NOTED.
 2. ALL MEDIAN CURB ARE TYPE A1-8 UNLESS OTHERWISE NOTED.
 3. ALL DRIVEWAYS ARE TYPE A AND X=3" UNLESS OTHERWISE NOTED.
 4. PROTECT IN PLACE ALL CURB DRAINS. REPLACE IF DAMAGED DURING CONSTRUCTION.
 5. SEE LANDSCAPE PLANS FOR TREE WELL AND PLANTER LOCATIONS.
 6. SEE STREET LIGHTING PLANS FOR STREET LIGHT LOCATIONS.
 7. SEE STORM DRAIN PLANS FOR CB AND LOCAL DEPRESSION LOCATIONS.
 8. SEE DWG P-304 FOR CURB RETURN AND CENTERLINE PROFILES.
 9. SEE DWG PI-309 FOR INTERSECTION DETAIL.
 10. SEE DWG C-310 FOR ADDITIONAL INFORMATION FOR INLET.

CURVE TABLE				
CURVE	R	Δ	L	T
A	35.00'	89°57'48"	54.96'	34.98'
B	35.00'	90°00'10"	54.98'	35.00'
C	35.00'	90°02'25"	55.00'	35.02'
D	194.08'	11°53'37"	40.29'	20.22'
E	2.00'	168°13'54"	5.87'	19.41'



- CONSTRUCTION NOTES:**
- 1 PCC CURB AND GUTTER PER SPPWC STD PLAN 120-2 (PCC OVER 6" CMB)
 - 2 PCC CURB PER SPPWC STD PLAN 120-2 (PCC OVER 6" CMB)
 - 3 PCC MEDIAN CURB PER SPPWC STD PLAN 120-2 (PCC OVER 6" CMB)
 - 5 PCC SIDEWALK PER SPPWC STD PLAN 112-2 (4" PCC ON 4" CMB)
 - 7 HMA PAVEMENT ON BASE MATERIAL PER TYP SECTIONS
 - 9 PCC COMMERCIAL DRIVEWAY PER SPPWC STD PLAN 110-2 (PCC OVER 6" CMB)
 - 11 PCC BUS PAD PER SPPWC STD PLAN 131-2, T=9.6", B=12"
 - 12 CURB DRAIN PER SPPWC STD PLAN 150-3
 - 14 PCC CURB RAMP PER SPPWC STD PLAN 111-5, OR AS SHOWN (PCC OVER 4" CMB)
 - 16 CHAIN LINK FENCE AND DRIVE GATE PER SPPWC STD PLAN 600-3, H=6". FABRIC SHALL NOT BE USED.
 - 17 CONSTRUCT LOCAL DEPRESSION AT CATCH BASIN PER STORM DRAIN PLANS
 - 19 TREE WELL PER LANDSCAPING PLAN
 - 20 COLORED CONCRETE CROSSWALK WITH CONCRETE BANDING PER DETAIL ON SHEET C-301
 - 21 PLANTING AREA PER LANDSCAPING PLAN
 - 22 BUS SHELTER, BUS STOP SIGN, AND TRASH RECEPTACLE PER DETAIL ON SHEET C-301
 - 27 PAVEMENT PER TYP SECTIONS

CURB RAMP DATA						
STATION	OFFSET	CASE	TYPE	Y	Z	ANGLE
a 167+53.09	50.24' LT	A	1	5.5'	8.5'	-
b 167+53.04	59.25' RT	A	1	5.5'	8.5'	-
c 168+49.60	59.26' RT	A	1	6'	8'	-

REVISIONS		
MARK	DATE	DESCRIPTION

AECOM

300 S. GRAND AVE.
LOS ANGELES, CA 90071
T 213.983.8100 F 213.983.8178
www.aecom.com

REGISTERED PROFESSIONAL ENGINEER
STATE OF CALIFORNIA
C 45779
EX. 12/31/18
CIVIL

CITY OF INGLEWOOD, CALIFORNIA
PUBLIC WORKS DEPARTMENT

PROJECT TITLE:
PLANS FOR IMPROVEMENT OF CENTURY BOULEVARD INGLEWOOD AVE TO DOTY AVE
PLAN AND PROFILE-164+75 TO 169+00

DESIGNED BY: _____
DRAWN BY: _____
CHECKED BY: _____

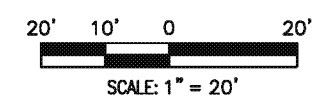
SUBMITTED BY / APPROVED BY:

ELOY M. CASTILLO, RCE 69100 / PRINCIPAL CIVIL ENGINEER

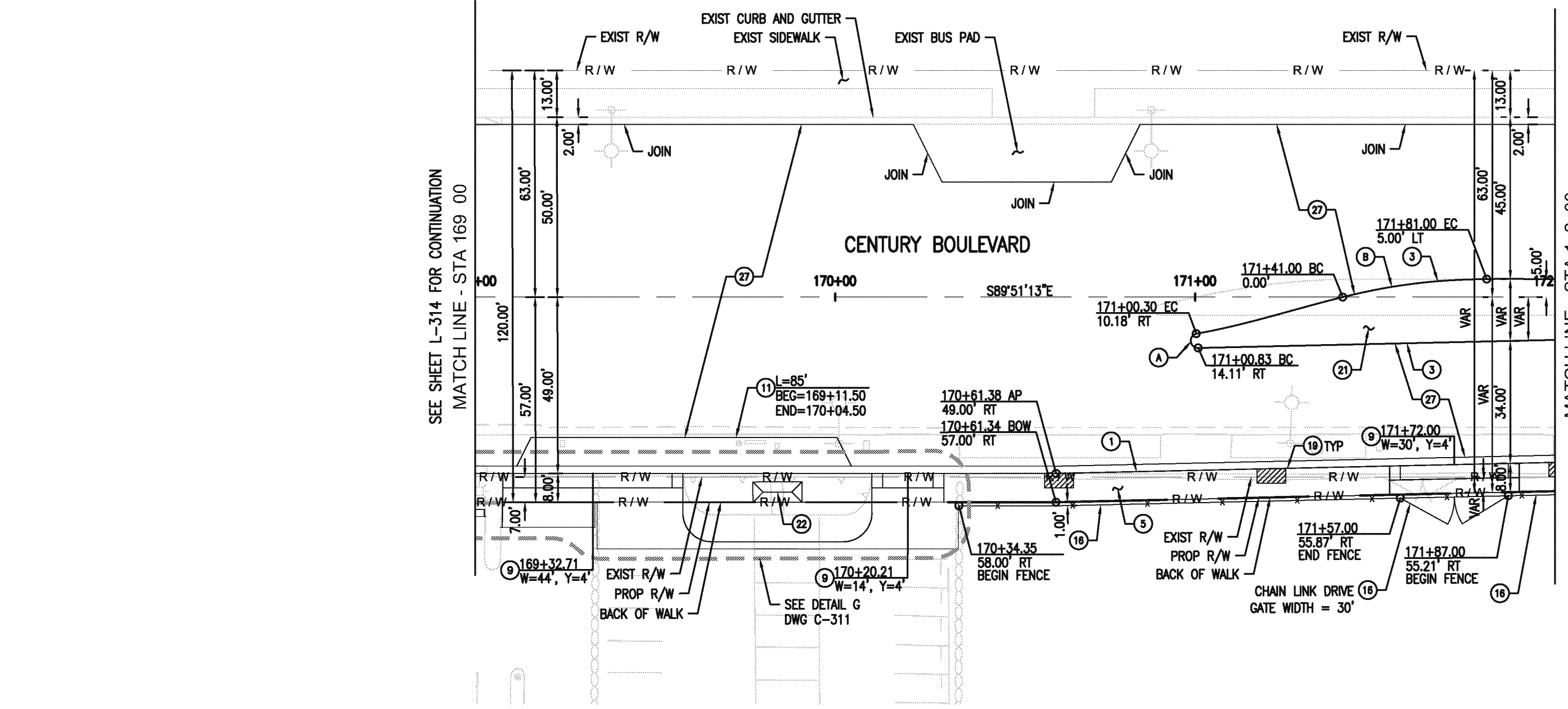
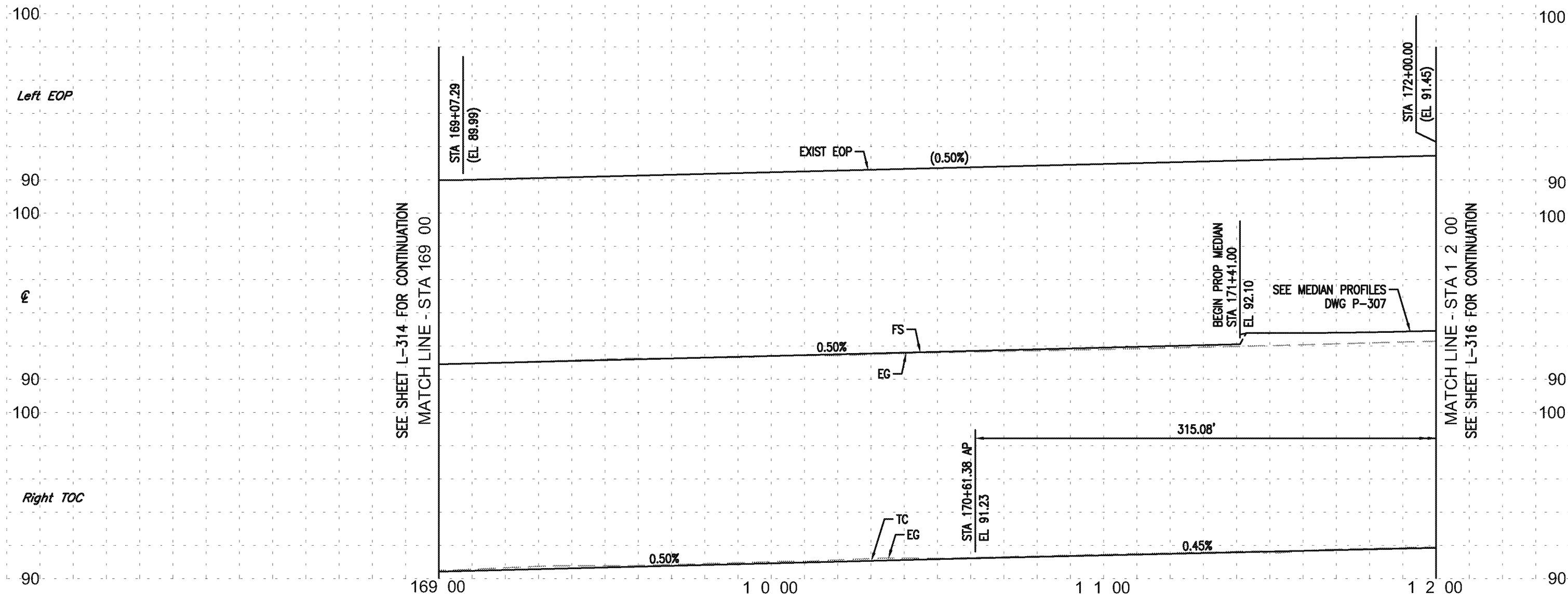
DATE: **3/1/2018**

PLAN SCALE: _____
PROFILE SCALE: VERTICAL _____
HORIZONTAL _____

PLAN NO.: **L-314**
SHEET NO.: **34 OF 203**



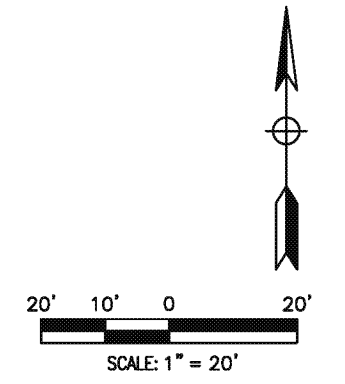
Drawing Name: R:\Projects\164+75\164+75_Plan_Sheet.dwg
 User: Eloy M. Castillo
 Date: 3/1/2018 4:41 PM
 Last Operator: February 16, 2018 4:41 PM by: Eloy M. Castillo



- NOTES:**
1. ALL CURB AND GUTTER ARE TYPE A2-6 UNLESS OTHERWISE NOTED.
 2. ALL MEDIAN CURB ARE TYPE A1-8 UNLESS OTHERWISE NOTED.
 3. ALL DRIVEWAYS ARE TYPE A AND X=3' UNLESS OTHERWISE NOTED.
 4. PROTECT IN PLACE ALL CURB DRAINS. REPLACE IF DAMAGED DURING CONSTRUCTION.
 5. SEE LANDSCAPE PLANS FOR TREE WELL AND PLANTER LOCATIONS.
 6. SEE STREET LIGHTING PLANS FOR STREET LIGHT LOCATIONS.

CURVE TABLE				
CURVE	R	Δ	L	T
A	2.00'	167°14'17"	8.54'	17.88'
B	162.50'	14°15'00"	40.42'	20.31'

- CONSTRUCTION NOTES:**
- 1 PCC CURB AND GUTTER PER SPPWC STD PLAN 120-2 (PCC OVER 6" CMB)
 - 3 PCC MEDIAN CURB PER SPPWC STD PLAN 120-2 (PCC OVER 6" CMB)
 - 5 PCC SIDEWALK PER SPPWC STD PLAN 112-2 (4" PCC ON 4" CMB)
 - 9 PCC COMMERCIAL DRIVEWAY PER SPPWC STD PLAN 110-2 (PCC OVER 6" CMB)
 - 11 PCC BUS PAD PER SPPWC STD PLAN 131-2, T=9.6", B=12"
 - 16 CHAIN LINK FENCE AND DRIVE GATE PER SPPWC STD PLAN 600-3, H=6". FABRIC SHALL NOT BE USED.
 - 18 TREE WELL PER LANDSCAPING PLAN
 - 21 PLANTING AREA PER LANDSCAPING PLAN
 - 22 BUS SHELTER, BUS STOP SIGN, AND TRASH RECEPTACLE PER DETAIL ON SHEET C-301
 - 27 PAVEMENT PER TYP SECTIONS



REVISIONS		
MARK	DATE	DESCRIPTION

CITY OF INGLEWOOD, CALIFORNIA
PUBLIC WORKS DEPARTMENT

PROJECT TITLE:
PLANS FOR IMPROVEMENT OF CENTURY BOULEVARD INGLEWOOD AVE TO DOTY AVE
 PLAN AND PROFILE-169+00 TO 172+00

DESIGNED BY: _____
 DRAWN BY: _____
 CHECKED BY: _____

SUBMITTED BY / APPROVED BY:

 ELROY M. CASTILLO, RCE 69100 / PRINCIPAL CIVIL ENGINEER

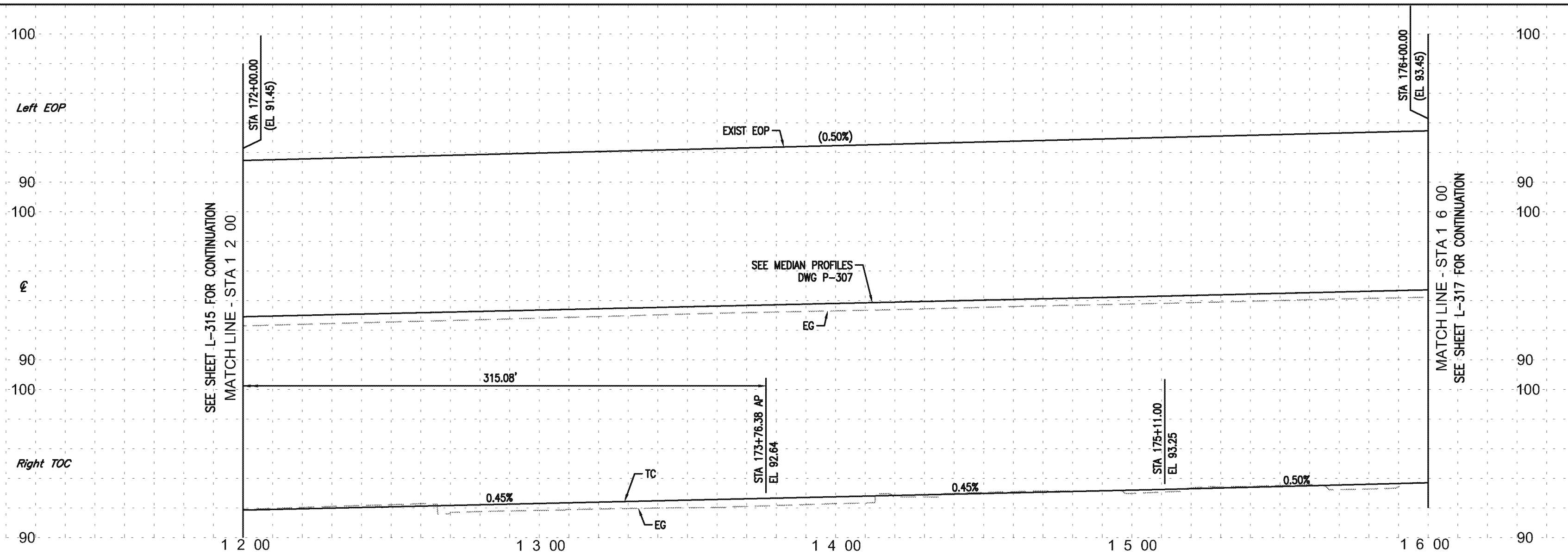
DATE: **3/1/2018**

PLAN NO.: **L-315**
 SHEET NO.: **35 OF 203**

AECOM
 300 S. GRAND AVE.
 LOS ANGELES, CA 90071
 T 213.983.8100 F 213.983.8178
 www.aecom.com

ST-4696

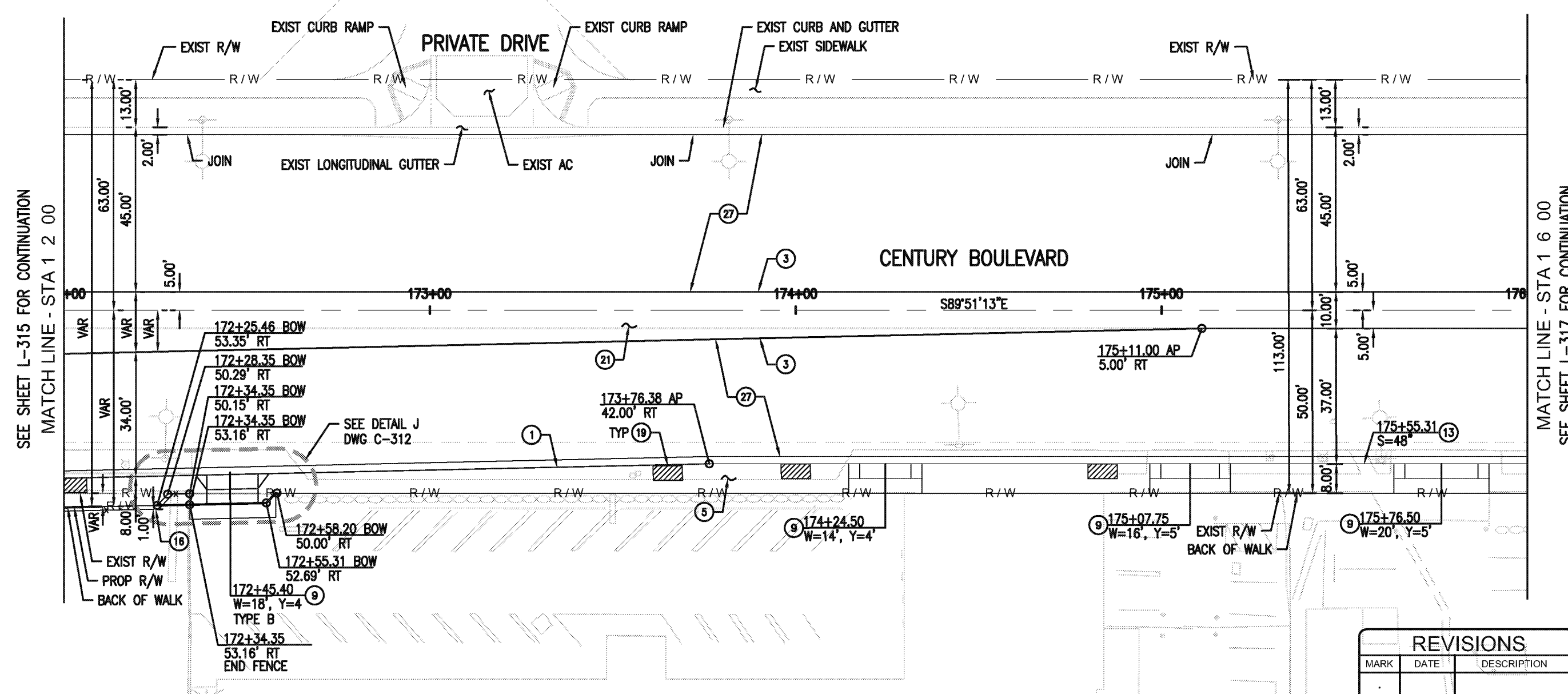
ST-4696



SEE SHEET L-315 FOR CONTINUATION
MATCH LINE - STA 1 2 00

MATCH LINE - STA 1 6 00
SEE SHEET L-317 FOR CONTINUATION

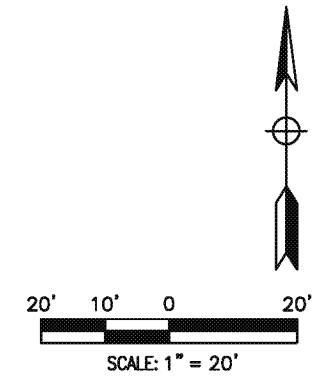
- NOTES:**
1. ALL CURB AND GUTTER ARE TYPE A2-6 UNLESS OTHERWISE NOTED.
 2. ALL MEDIAN CURB ARE TYPE A1-8 UNLESS OTHERWISE NOTED.
 3. ALL DRIVEWAYS ARE TYPE A AND X=3' UNLESS OTHERWISE NOTED.
 4. PROTECT IN PLACE ALL CURB DRAINS. REPLACE IF DAMAGED DURING CONSTRUCTION.
 5. SEE LANDSCAPE PLANS FOR TREE WELL AND PLANTER LOCATIONS.
 6. SEE STREET LIGHTING PLANS FOR STREET LIGHT LOCATIONS.




SEE SHEET L-315 FOR CONTINUATION
MATCH LINE - STA 1 2 00

MATCH LINE - STA 1 6 00
SEE SHEET L-317 FOR CONTINUATION

- CONSTRUCTION NOTES:**
- 1 PCC CURB AND GUTTER PER SPPWC STD PLAN 120-2 (PCC OVER 6" CMB)
 - 3 PCC MEDIAN CURB PER SPPWC STD PLAN 120-2 (PCC OVER 6" CMB)
 - 5 PCC SIDEWALK PER SPPWC STD PLAN 112-2 (4" PCC ON 4" CMB)
 - 9 PCC COMMERCIAL DRIVEWAY PER SPPWC STD PLAN 110-2 (PCC OVER 6" CMB)
 - 13 PARKWAY DRAIN PER SPPWC STD PLAN 151-2
 - 16 CHAIN LINK FENCE AND DRIVE GATE PER SPPWC STD PLAN 600-3, H=6'. FABRIC SHALL NOT BE USED.
 - 19 TREE WELL PER LANDSCAPING PLAN
 - 21 PLANTING AREA PER LANDSCAPING PLAN
 - 27 PAVEMENT PER TYP SECTIONS

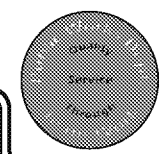


REVISIONS		
MARK	DATE	DESCRIPTION



CITY OF INGLEWOOD, CALIFORNIA
PUBLIC WORKS DEPARTMENT

PROJECT TITLE:
**PLANS FOR IMPROVEMENT OF
CENTURY BOULEVARD
INGLEWOOD AVE TO DOTY AVE
PLAN AND PROFILE-172+00 TO 176+00**




PROFILE SCALE:
VERTICAL
HORIZONTAL

DESIGNED BY: _____

DRAWN BY: _____

CHECKED BY: _____

SUBMITTED BY / APPROVED BY:


3/1/2018

ELIY M CASTILLO, RCE 69107 / PRINCIPAL CIVIL ENGINEER

PLAN NO.
L-316

SHEET NO.
36 OF 203



AECOM

AECOM
300 S. GRAND AVE.
LOS ANGELES, CA 90071
T 213.983.8100 F 213.983.8178
www.aecom.com



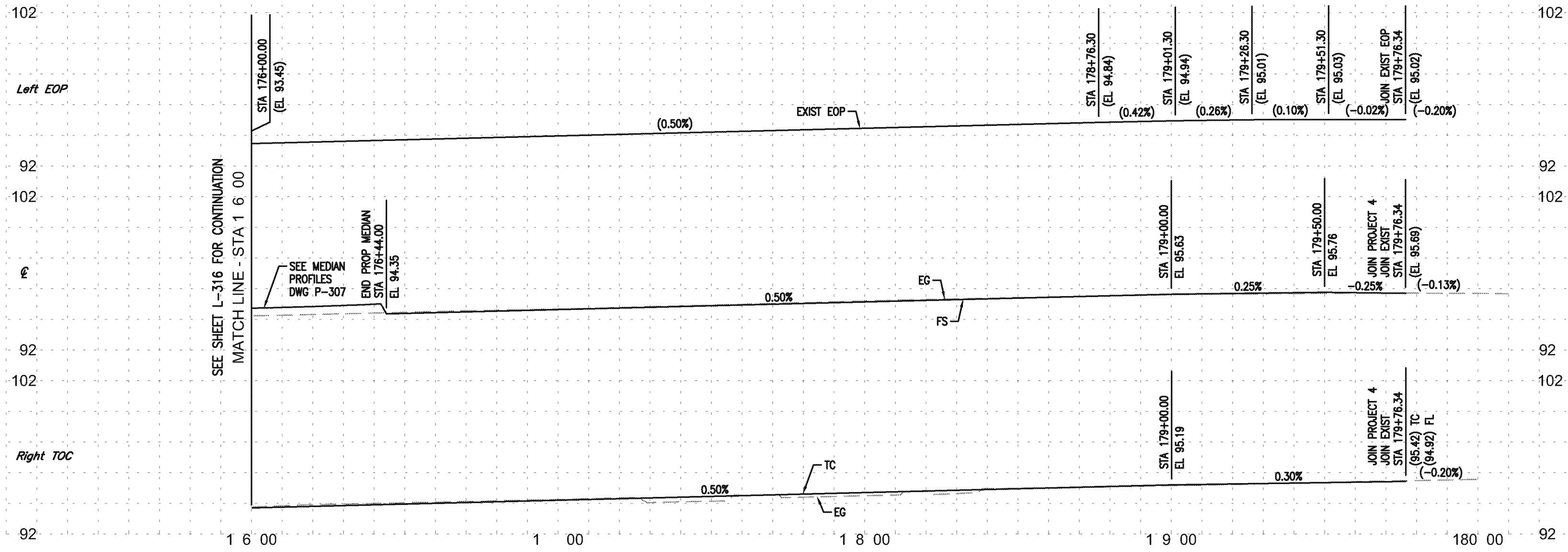
ST-4696

ST-4696

Drawing Name: C:\Projects\172+00\172+00_Century\172+00_Century.dwg
Last Operator: February 16, 2018 - 4:44PM by: tamman

ST-4696

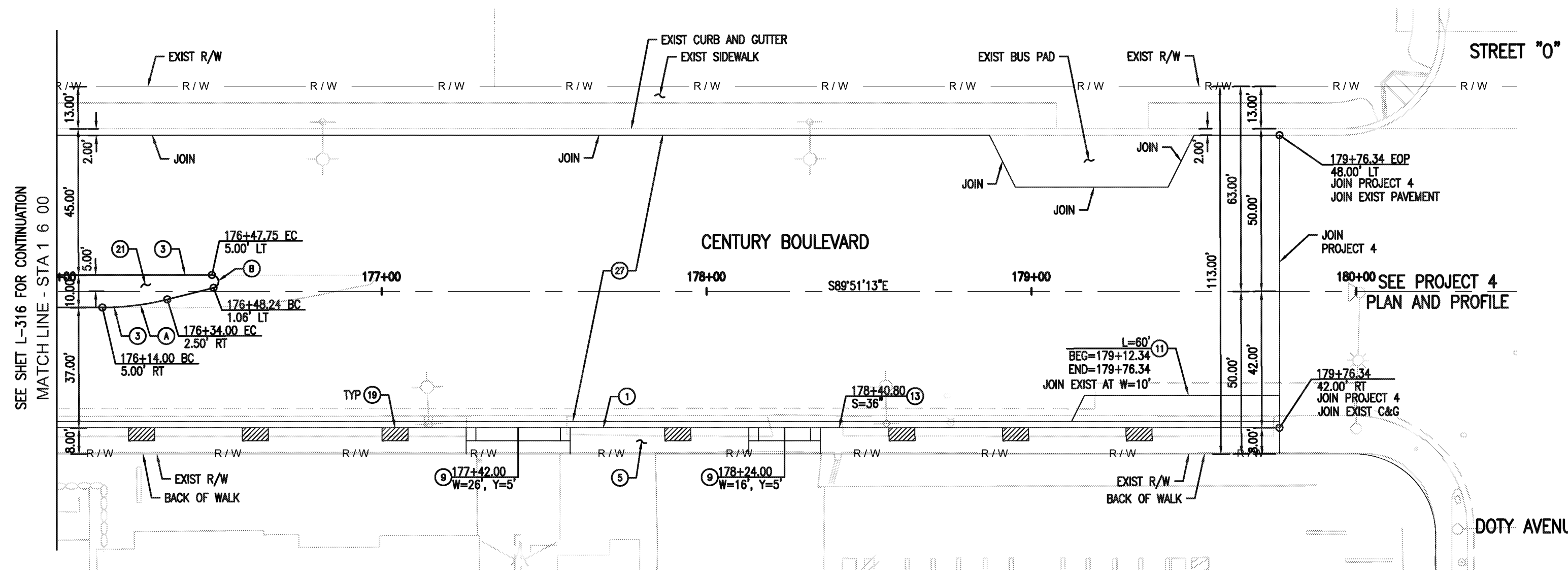
ST-4696



- NOTES:**
1. ALL CURB AND GUTTER ARE TYPE A2-6 UNLESS OTHERWISE NOTED.
 2. ALL MEDIAN CURB ARE TYPE A1-8 UNLESS OTHERWISE NOTED.
 3. ALL DRIVEWAYS ARE TYPE A AND X=3" UNLESS OTHERWISE NOTED.
 4. PROTECT IN PLACE ALL CURB DRAINS. REPLACE IF DAMAGED DURING CONSTRUCTION.
 5. SEE LANDSCAPE PLANS FOR TREE WELL AND PLANTER LOCATIONS.
 6. SEE STREET LIGHTING PLANS FOR STREET LIGHT LOCATIONS.

CURVE TABLE				
CURVE	R	Δ	L	T
A	81.25'	14°15'00"	20.21'	10.16'
B	2.00'	165°57'50"	5.79'	16.25'

- CONSTRUCTION NOTES:**
- 1 PCC CURB AND GUTTER PER SPPWC STD PLAN 120-2 (PCC OVER 6" CMB)
 - 3 PCC MEDIAN CURB PER SPPWC STD PLAN 120-2 (PCC OVER 6" CMB)
 - 5 PCC SIDEWALK PER SPPWC STD PLAN 112-2 (4" PCC ON 4" CMB)
 - 9 PCC COMMERCIAL DRIVEWAY PER SPPWC STD PLAN 110-2 (PCC OVER 6" CMB)
 - 11 PCC BUS PAD PER SPPWC STD PLAN 131-2, T=9.6", B=12"
 - 13 PARKWAY DRAIN PER SPPWC STD PLAN 151-2
 - 19 TREE WELL PER LANDSCAPING PLAN
 - 21 PLANTING AREA PER LANDSCAPING PLAN
 - 27 PAVEMENT PER TYP SECTIONS



REVISIONS		
MARK	DATE	DESCRIPTION

CITY OF INGLEWOOD, CALIFORNIA
PUBLIC WORKS DEPARTMENT

PROJECT TITLE:
**PLANS FOR IMPROVEMENT OF
CENTURY BOULEVARD
INGLEWOOD AVE TO DOTY AVE
PLAN AND PROFILE-176+00 TO 179+65**

DESIGNED BY: _____
DRAWN BY: _____
CHECKED BY: _____

SUBMITTED BY / APPROVED BY:

ELOY M. CASTILLO, RCE 68100 / PRINCIPAL CIVIL ENGINEER

DATE: **3/1/2018**

PLAN SCALE: _____
PROFILE SCALE: VERTICAL _____
HORIZONTAL _____

PLAN NO.: **L-31**
SHEET NO.: **37 OF 203**

AECOM
300 S. GRAND AVE.
LOS ANGELES, CA 90071
T 213.983.8100 F 213.983.8178
www.aecom.com

ST-4696

ST-4696