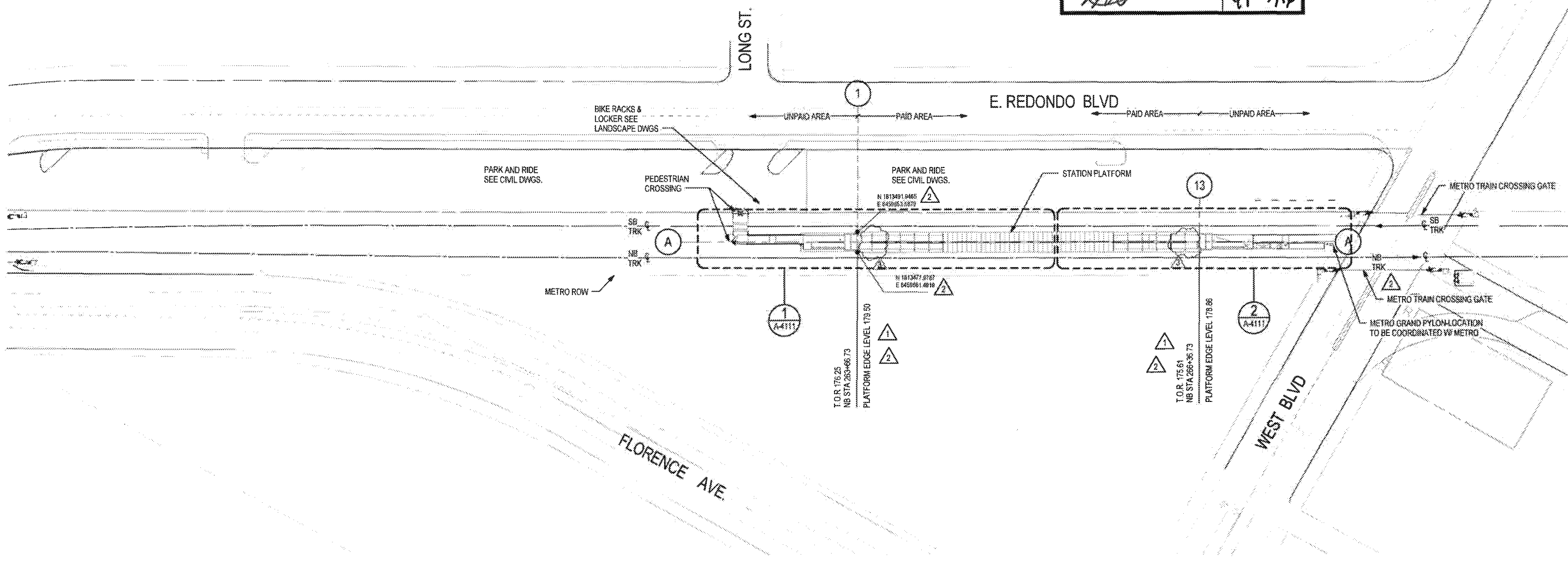




**M Metro**

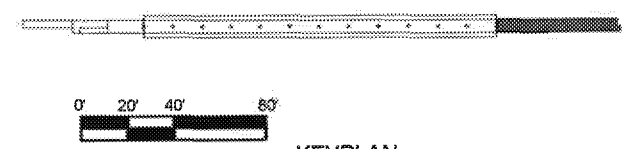
- APPROVED
- APPROVED AS NOTED (no resubmittal required)
- REJECTED, REVISE & RESUBMIT
- FOR RECORD ONLY

Director, Construction MGR/ Engineer: *[Signature]* Date: 4/29/16



**SITE PLAN**

1" = 40'-0"



**KEYPLAN**

PACKAGE B-1.4

THE PREPARATION OF THIS DRAWING HAS BEEN FINANCED IN PART THROUGH A GRANT FROM THE U.S. DEPARTMENT OF TRANSPORTATION, FEDERAL TRANSIT ADMINISTRATION (FTA), UNDER THE FEDERAL TRANSIT ACT OF 1964, AS AMENDED, AND IN PART BY THE TAXES OF THE CITIZENS OF LOS ANGELES COUNTY AND OF THE STATE OF CALIFORNIA

REV	DATE	BY	APP	REG NO	EXPIRES	REAL HOLDER	DESCRIPTION
0	4/29/16	AAH	RP	C34273	11/30/17	E. SANCHEZ	NDC 086
1	2/12/16	E.S.	E.S.	C25553	03/31/17	E. SANCHEZ	NDC 085
2	10/21/15	E.S.	E.S.	C25553	03/31/17	E. SANCHEZ	NDC 085
3	5/21/15			C25553	03/31/17	E. SANCHEZ	AFC SUBMITTAL

DESIGNED BY  
E. SANCHEZ

DRAWN BY  
R. RESURRECCION

CHECKED BY  
S. SOGHOMONIAN

IN CHARGE  
E. SANCHEZ

DATE  
5/21/15

A SIGNED & SEALED ORIGINAL OF REV 0 OF THIS DRAWING IS MAINTAINED BY WSCC

**M Metro** LOS ANGELES COUNTY METROPOLITAN TRANSPORTATION AUTHORITY

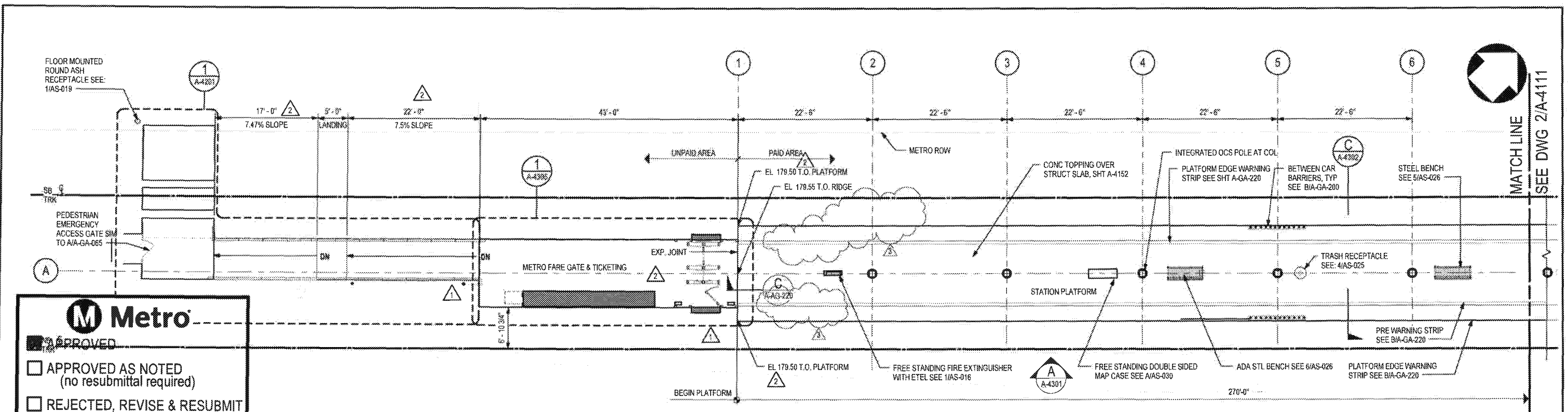
**WALSH-SHEA CORRIDOR CONSTRUCTORS**  
1777 Oakland Blvd.  
Walnut Creek, CA 94596

**HNTB**  
STEVE WHITAKER APPROVED

**TRM**  
EFRAN SANCHEZ SUBMITTED

**CRENSHAW/LAX TRANSIT CORRIDOR PROJECT**  
**FLORENCE / WEST STATION**  
**SITE PLAN**

CONTRACT NO. <b>C0988</b>	REV <b>3</b>
DRAWING NO. <b>A-4001</b>	SCALE <b>1" = 40'-0"</b>
SHEET NO.	



**Metro**

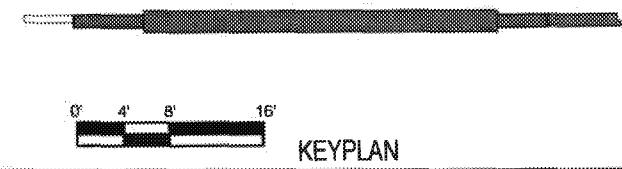
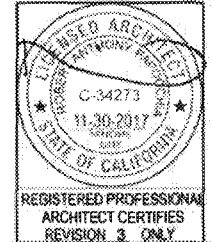
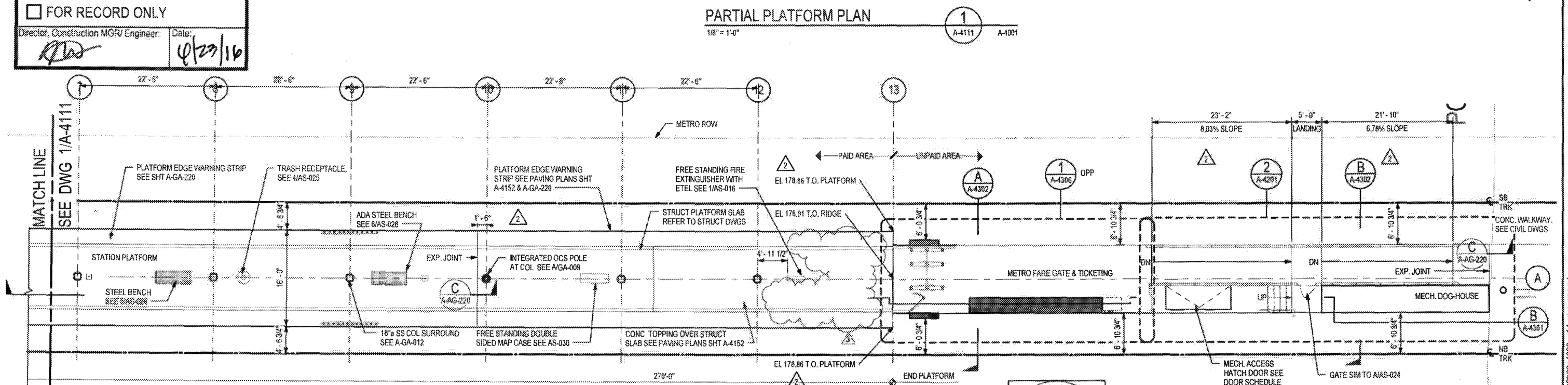
**APPROVED**

APPROVED AS NOTED (no resubmittal required)

REJECTED, REVISE & RESUBMIT

FOR RECORD ONLY

Director, Construction MGR/ Engineer: *[Signature]* Date: *02/23/16*



REV	DATE	BY	APP	REG NO	EXPIRES	SEAL HOLDER	DESCRIPTION
1	4/29/16	PH	RF	C34273	11/30/17	[Signature]	NDC 086
2	2/12/16	E.S.	E.S.	C25553	03/31/17	E. SANCHEZ	NDC 085
3	10/21/15	E.S.	E.S.	C25553	03/31/17	E. SANCHEZ	NDC 085
4	5/21/15	E.S.	E.S.	C25553	03/31/17	E. SANCHEZ	AFC SUBMITTAL

DESIGNED BY: E. SANCHEZ  
 DRAWN BY: R. RESURRECCION  
 CHECKED BY: S. SOGHOMONIAN  
 IN CHARGE: E. SANCHEZ  
 DATE: 5/21/15

**Metro** LOS ANGELES COUNTY METROPOLITAN TRANSPORTATION AUTHORITY

WALSH-SHEA CORRIDOR CONSTRUCTORS

1777 Oakland Blvd.  
Walnut Creek, CA 94596

**HNTB**

STEVE WHITAKER APPROVED

**FRM**

EFRAIN SANCHEZ SUBMITTED

**CRENSHAW/LAX TRANSIT CORRIDOR PROJECT**

**FLORENCE / WEST STATION PLATFORM LEVEL PLAN**

CONTRACT NO.	C0988
DRAWING NO.	A-4111
SCALE	1/8" = 1'-0"
SHEET NO.	3



**M Metro**

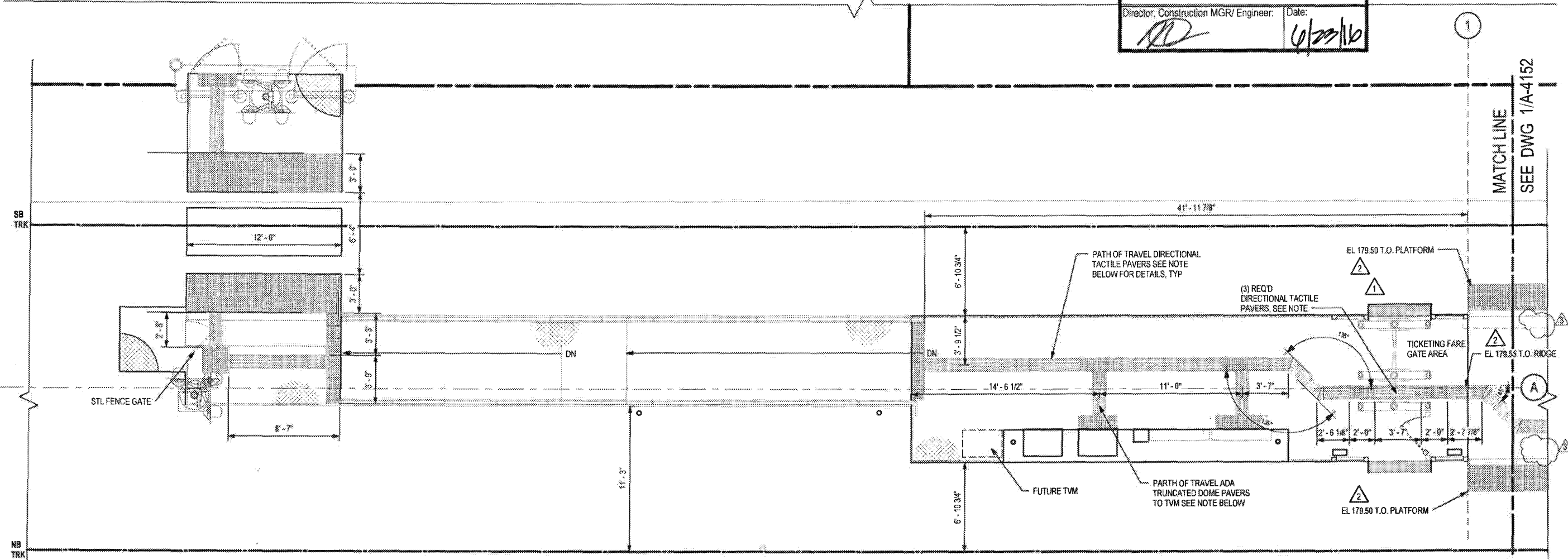
APPROVED

APPROVED AS NOTED  
(no resubmittal required)

REJECTED, REVISE & RESUBMIT

FOR RECORD ONLY

Director, Construction MGR/ Engineer: *[Signature]* Date: *6/23/16*



**LEGEND**

- SEALED CONCRETE
- 1' X 1' TRUNCATED DOME PATTERN ADA TACTILE. REFER TO SHT AS-038 & AS-039 FOR DETAILS
- 1' X 1' DIRECTIONAL BAR PATTERN ADA TACTILE. REFER TO SHT AS-038 & AS-039 FOR DETAILS

**NOTE**

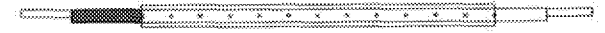
COLOR ARCHITECTURAL TOPPING SLAB PATTERN NOT RELEASED FOR CONSTRUCTION, TO BE APPROVED BY METRO THROUGH NDC.



**PARTIAL PAVING PLAN**

1/4" = 1'-0"

1 A-4151 A-4306



0' 2' 4' 8' KEYPLAN

PACKAGE B-1.4

THE PREPARATION OF THIS DRAWING HAS BEEN FINANCED IN PART THROUGH A GRANT FROM THE U.S. DEPARTMENT OF TRANSPORTATION, FEDERAL TRANSIT ADMINISTRATION (FTA), UNDER THE FEDERAL TRANSIT ACT OF 1954, AS AMENDED, AND IN PART BY THE TAXES OF THE CITIZENS OF LOS ANGELES COUNTY AND OF THE STATE OF CALIFORNIA.

REV	DATE	BY	APP	REG NO	EXPIRES	SEAL HOLDER	DESCRIPTION
	4/29/16	PH	RF	C34273	11/30/17	<i>[Signature]</i>	NDC 086
	2/12/16	E.S.	E.S.	C25553	03/31/17	E. SANCHEZ	NDC 085
	10/21/15	E.S.	E.S.	C25553	03/31/17	E. SANCHEZ	NDC 065
0	5/21/15			C25553	03/31/17	E. SANCHEZ	AFC SUBMITTAL

DESIGNED BY  
E. SANCHEZ

DRAWN BY  
R. RESURRECCION

CHECKED BY  
S. SOGHOMONIAN

IN CHARGE  
E. SANCHEZ

DATE  
5/21/15

A SIGNED & SEALED ORIGINAL OF REV 0 OF THIS DRAWING IS MAINTAINED BY WSCC

**M Metro** LOS ANGELES COUNTY METROPOLITAN TRANSPORTATION AUTHORITY

1777 Oakland Blvd  
Walnut Creek, CA 94596

**WALSH-SHEA CORRIDOR CONSTRUCTORS**

**HNTB**

**IRM**

STEVE WHITAKER APPROVED

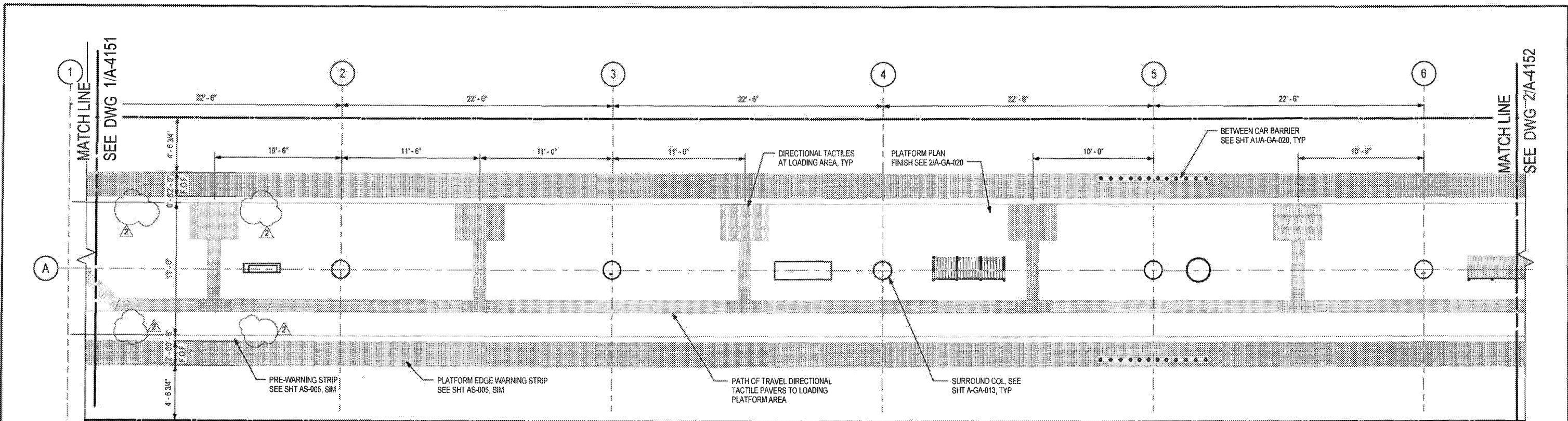
EFRAIN SANCHEZ SUBMITTED

**CRENSHAW/LAX TRANSIT CORRIDOR PROJECT**

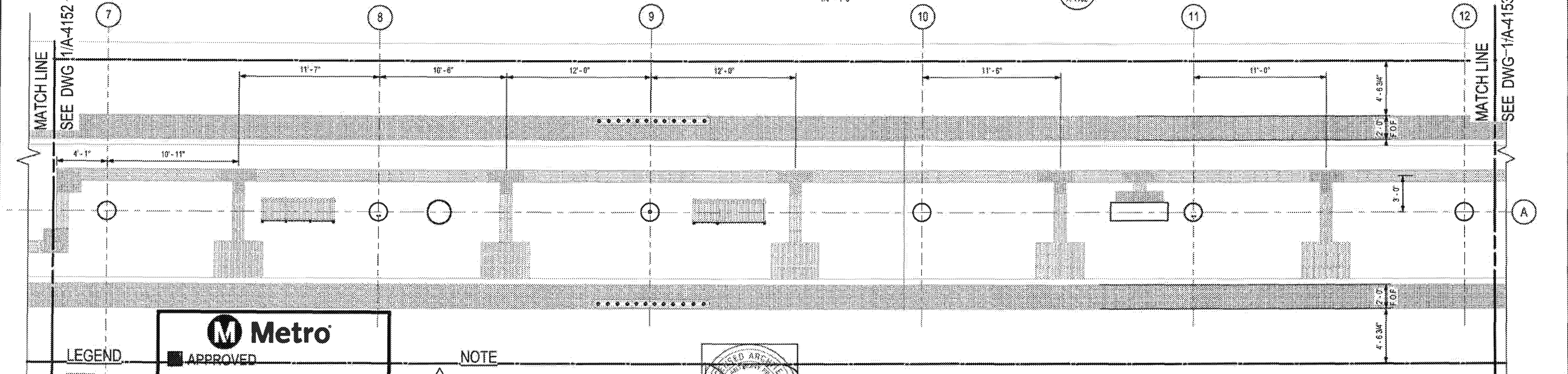
**FLORENCE / WEST STATION**

**PARTIAL PAVING PLAN 1 OF 3**

CONTRACT NO. <b>C0988</b>	REV <b>3</b>
DRAWING NO. <b>A-4151</b>	
SCALE <b>1/4" = 1'-0"</b>	
SHEET NOS.	



**PARTIAL PAVING PLAN**  
1  
1/4" = 1'-0"  
A-4152



**PARTIAL PAVING PLAN**  
2  
1/4" = 1'-0"  
A-4152

**LEGEND**

- SEALED CONCRETE
- 1' X 1' TRUNCATED DOME PATTERN (SEE SHT AS-009 FOR DETAILS)
- 1' X 1' DIRECTIONAL TACTILE PAVERS (SEE SHT AS-005 FOR DETAILS)

**Metro**

**APPROVED**

APPROVED AS NOTED (NO RESUBMIT REQUIRED)

REJECTED, REVISE & RESUBMIT

FOR RECORD ONLY

Director, Construction MGMT Engineer Date: *[Signature]* *[Date]*

**NOTE**

COLOR ARCHITECTURAL TOPPING SLAB PATTERN NOT RELEASED FOR CONSTRUCTION, TO BE APPROVED BY METRO THROUGH NDC.



THE PREPARATION OF THIS DRAWING HAS BEEN FINANCED IN PART THROUGH A GRANT FROM THE U.S. DEPARTMENT OF TRANSPORTATION, FEDERAL TRANSIT ADMINISTRATION (FTA), UNDER THE FEDERAL TRANSIT ACT OF 1954, AS AMENDED, AND IN PART BY THE TAXES OF THE CITIZENS OF LOS ANGELES COUNTY AND OF THE STATE OF CALIFORNIA

REV	DATE	BY	APP	REG NO	EXPIRES	SEAL HOLDER	DESCRIPTION
0	4/29/15	AA	RF	C34273	11/30/17		NDC 066
	10/21/15			C25553	03/31/17	E. SANCHEZ	NDC 065
	5/21/15			C25553	03/31/17	E. SANCHEZ	AFC SUBMITTAL

A SIGNED & SEALED ORIGINAL OF REV 0 OF THIS DRAWING IS MAINTAINED BY WSSC

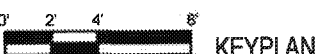
**REGISTERED PROFESSIONAL ARCHITECT CERTIFIES REVISION 2 ONLY**

**Metro** LOS ANGELES COUNTY METROPOLITAN TRANSPORTATION AUTHORITY

**WALSH-SHEA CORRIDOR CONSTRUCTORS** 1777 Oakland Blvd. Walnut Creek, CA 94596

**HNTB** STEVE WHITAKER APPROVED

**WSP** EFRAN SANCHEZ SUBMITTED



**CRENSHAW/LAX TRANSIT CORRIDOR PROJECT FLORENCE / WEST STATION PARTIAL PAVING PLAN 2 OF 3**

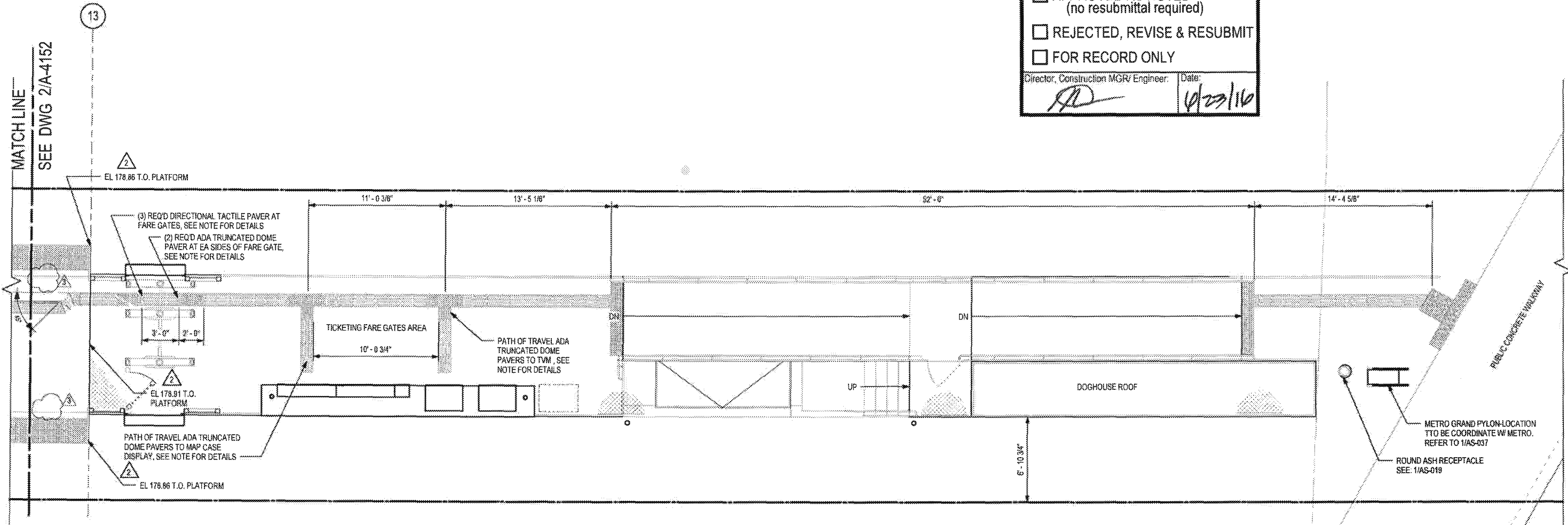
CONTRACT NO.	C0988
DRAWING NO.	A-4152
SCALE	1/4" = 1'-0"
SHEET NO.	



**M Metro**

- APPROVED
- APPROVED AS NOTED (no resubmittal required)
- REJECTED, REVISE & RESUBMIT
- FOR RECORD ONLY

Director, Construction MGR/ Engineer: *AS* Date: *4/23/16*

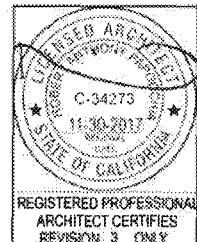


**LEGEND**

- SEALED CONCRETE
- 1' X 1' TRUNCATED DOME PATTERN ADA TACTILE. REFER TO SHT AS-038 & AS-039 FOR DETAILS
- 1' X 1' DIRECTIONAL BAR PATTERN ADA TACTILE. REFER TO SHT AS-038 & AS-039 FOR DETAILS

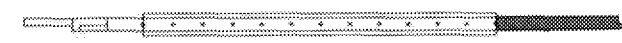


**NOTE**  
 COLOR ARCHITECTURAL TOPPING SLAB PATTERN NOT RELEASED FOR CONSTRUCTION, TO BE APPROVED BY METRO THROUGH NDC.



**PARTIAL PAVING PLAN**

1/4" = 1'-0"



KEYPLAN

PACKAGE B-1.4

THE PREPARATION OF THIS DRAWING HAS BEEN FINANCED IN PART THROUGH A GRANT FROM THE U.S. DEPARTMENT OF TRANSPORTATION, FEDERAL TRANSIT ADMINISTRATION (FTA), UNDER THE FEDERAL TRANSIT ACT OF 1964, AS AMENDED, AND IN PART BY THE TAXES OF THE CITIZENS OF LOS ANGELES COUNTY AND OF THE STATE OF CALIFORNIA

REV	DATE	BY	APP	REG NO	EXPIRES	SEAL HOLDER	DESCRIPTION
1	4/29/16	AS	RP	C34273	11/30/17		NDC 086
2	2/12/16	E.S.	E.S.	C25553	03/31/17	E. SANCHEZ	NDC 085
3	10/21/15	E.S.	E.S.	C25553	03/31/17	E. SANCHEZ	NDC 065
4	5/21/15			C25553	03/31/17	E. SANCHEZ	AFC SUBMITTAL

DESIGNED BY  
E. SANCHEZ  
 DRAWN BY  
R. RESURRECCION  
 CHECKED BY  
S. SOGHOMONIAN  
 IN CHARGE  
E. SANCHEZ  
 DATE  
5/21/15

A SIGNED & SEALED ORIGINAL OF REV 0 OF THIS DRAWING IS MAINTAINED BY WSCC

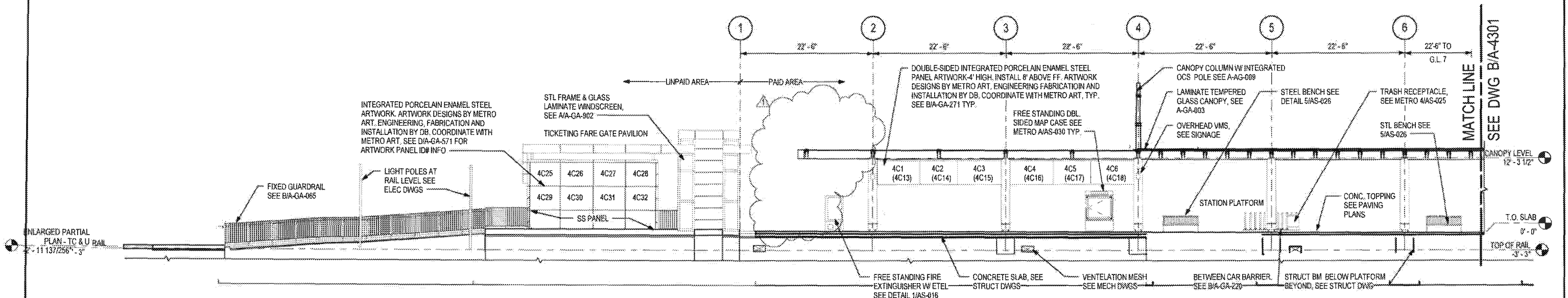
**M** LOS ANGELES COUNTY METROPOLITAN TRANSPORTATION AUTHORITY  
**Metro**  
 WALSH-SHEA CORRIDOR CONSTRUCTORS  
 1777 Oakland Blvd.  
 Walnut Creek, CA 94596

**HNTB**  
 STEVE WHITAKER  
 APPROVED

**TRM**  
 EFRAIN SANCHEZ  
 SUBMITTED

**CRENSHAW/LAX TRANSIT CORRIDOR PROJECT**  
 FLORENCE / WEST STATION  
 PARTIAL PAVING PLAN 3 OF 3

CONTRACT NO <b>C0988</b>	REV <b>3</b>
DRAWING NO <b>A-4153</b>	
SCALE <b>1/4" = 1'-0"</b>	
SHEET NO	



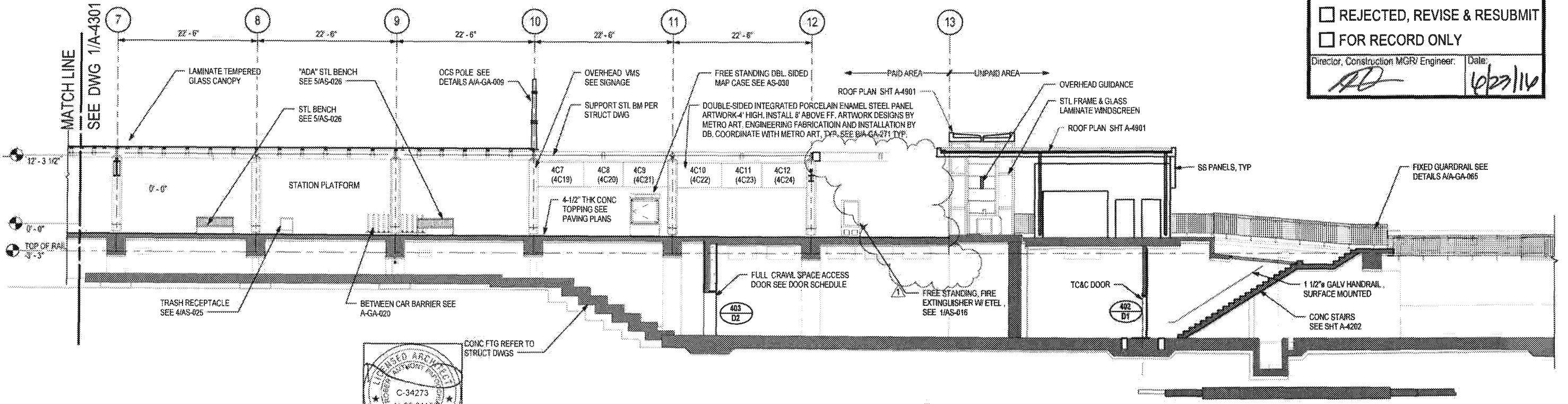
**PARTIAL LONGITUDINAL ELEVATION**  
1/8" = 1'-0"

**NOTE:**  
1. NUMBERS IN PARENTHESIS DENOTE ART PANELS ON OPPOSITE SIDE

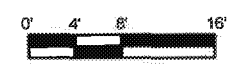
**M Metro**

- APPROVED
- APPROVED AS NOTED (no resubmittal required)
- REJECTED, REVISE & RESUBMIT
- FOR RECORD ONLY

Director, Construction MGR/ Engineer: *AD* Date: *6/23/16*



**LONGITUDINAL SECTION**  
1/8" = 1'-0"



PACKAGE B-14



REV	DATE	BY	APP	REG NO	EXPIRES	SEAL NUMBER	DESCRIPTION
0	5/21/15	AS	RP	C34273	11/30/17		NDC 086
				C25553	03/31/17	E. SANCHEZ	AFC SUBMITTAL

DESIGNED BY  
E. SANCHEZ  
DRAWN BY  
R. RESURRECCION  
CHECKED BY  
S. SOGHOMONIAN  
IN CHARGE  
E. SANCHEZ  
DATE  
5/21/15

A SIGNED & SEALED ORIGINAL OF REV 0 OF THIS DRAWING IS MAINTAINED BY WSCC

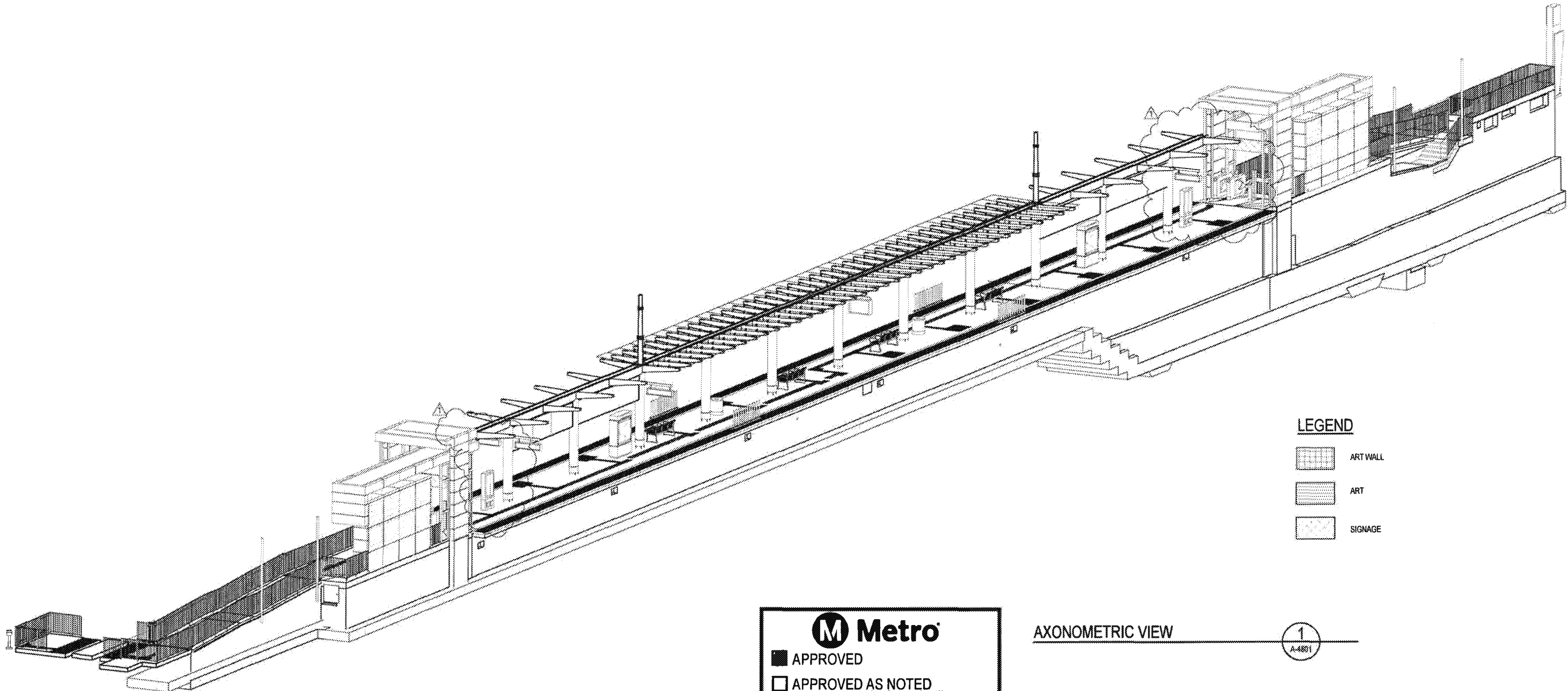
**M** LOS ANGELES COUNTY METROPOLITAN TRANSPORTATION AUTHORITY  
**Metro**

WALSH-SHEA CORRIDOR CONSTRUCTORS  
1777 Oakland Blvd.  
Walnut Creek, CA 94596




**HNTB** STEVE WHITAKER APPROVED  
**TRM** EFRAIN SANCHEZ SUBMITTED

**CRENSHAW/LAX TRANSIT CORRIDOR PROJECT**  
FLORENCE / WEST STATION  
LONGITUDINAL SECTION / ELEVATION

CONTRACT NO <b>C0988</b>	REV <b>1</b>
DRAWING NO <b>A-4301</b>	SCALE <b>1/8" = 1'-0"</b>
SHEET NO	



**LEGEND**

-  ART WALL
-  ART
-  SIGNAGE

AXONOMETRIC VIEW

1  
A-4801

PACKAGE B-1.4


**M Metro**

APPROVED

APPROVED AS NOTED  
(no resubmittal required)

REJECTED, REVISE & RESUBMIT

FOR RECORD ONLY

Director, Construction MGR/ Engineer:  Date: 4/23/16



REGISTERED PROFESSIONAL ARCHITECT CERTIFIES REVISION 1 ONLY

A SIGNED & SEALED ORIGINAL OF REV 0 OF THIS DRAWING IS MAINTAINED BY WSCC

THE PREPARATION OF THIS DRAWING HAS BEEN FINANCED IN PART THROUGH A GRANT FROM THE U.S. DEPARTMENT OF TRANSPORTATION, FEDERAL TRANSIT ADMINISTRATION (FTA), UNDER THE FEDERAL TRANSIT ACT OF 1954, AS AMENDED, AND IN PART BY THE TAXES OF THE COUNTY AND OF THE STATE OF CALIFORNIA

REV	DATE	BY	APP	REG NO	EXPIRES	SEAL HOLDER	DESCRIPTION
0	5/21/15	AS	RP	C25553	03/31/17	E. SANCHEZ	AFC SUBMITTAL

DESIGNED BY  
**E. SANCHEZ**

DRAWN BY  
**R. RESURRECCION**

CHECKED BY  
**S. SOGHOMONIAN**

IN CHARGE  
**E. SANCHEZ**

DATE  
5/21/15

**M Metro** LOS ANGELES COUNTY METROPOLITAN TRANSPORTATION AUTHORITY

1777 Oakland Blvd.  
Walnut Creek, CA 94596

**HNTB** STEVE WHITAKER APPROVED

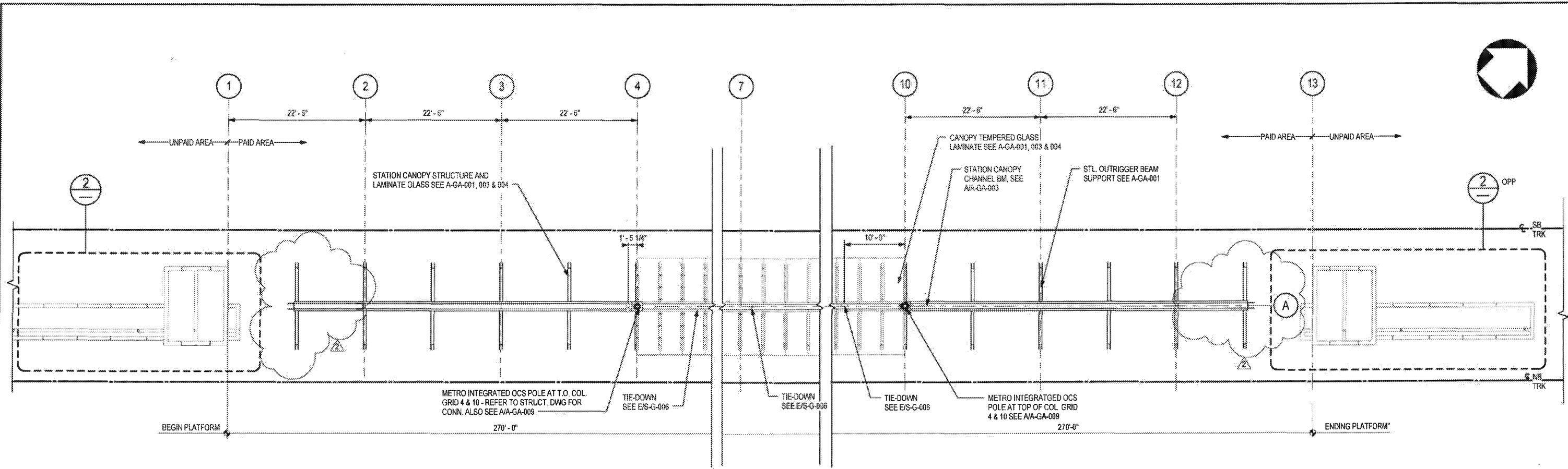
**MGM** EFRAIN SANCHEZ SUBMITTED

**CRENSHAW/LAX TRANSIT CORRIDOR PROJECT**

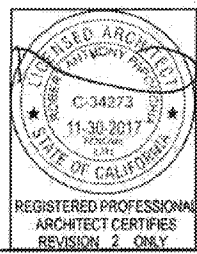
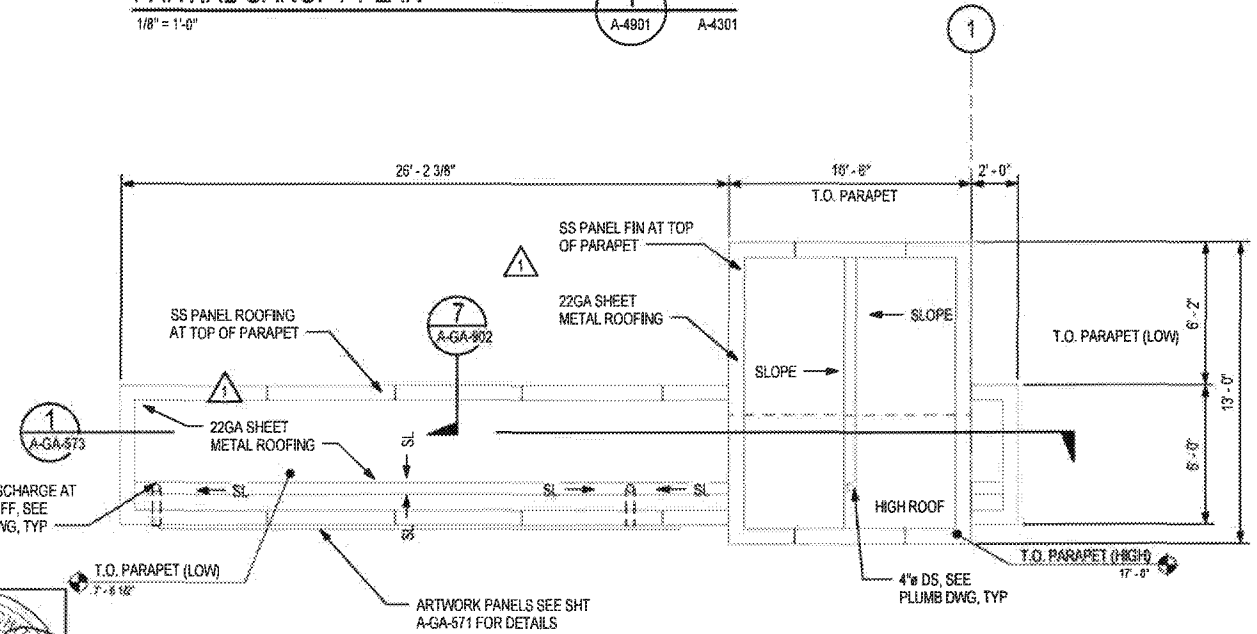
**FLORENCE / WEST STATION**

**AXONOMETRIC VIEW - PLATFORM LEVEL**

CONTRACT NO. <b>C0988</b>	
DRAWING NO. <b>A-4801</b>	REV <b>1</b>
SCALE <b>NO SCALE</b>	
SHEET NO.	



**PARTIAL CANOPY PLAN**  
1/8" = 1'-0"  
A-4901 A-4301



**ROOF PLAN-CANOPY TICKET PAVILION**  
1/4" = 1'-0"  
A-4901 A-4301

**Metro**

- APPROVED
- APPROVED AS NOTED (no resubmittal required)
- REJECTED, REVISE & RESUBMIT
- FOR RECORD ONLY

Director, Construction MGR/Engineer: *[Signature]* Date: 6/23/16

PACKAGE B-1.4

THE PREPARATION OF THIS DRAWING HAS BEEN FINANCED IN PART THROUGH A GRANT FROM THE U.S. DEPARTMENT OF TRANSPORTATION, FEDERAL TRANSIT ADMINISTRATION (FTA), UNDER THE FEDERAL TRANSIT ACT OF 1964, AS AMENDED, AND IN PART BY THE TAXES OF THE CITIZENS OF LOS ANGELES COUNTY AND OF THE STATE OF CALIFORNIA.

REV	DATE	BY	APP	REG NO	EXPIRES	SEAL HOLDER	DESCRIPTION
1	4/29/16	AS	RF	C34273	11/30/17	[Signature]	NDC 086
2	10/21/15	E.S.	E.S.	C25553	03/31/17	E. SANCHEZ	NDC 065
3	5/21/15	E.S.	E.S.	C25553	03/31/17	E. SANCHEZ	AFC SUBMITTAL

DESIGNED BY  
E. SANCHEZ  
DRAWN BY  
R. RESURRECCION  
CHECKED BY  
S. SOGHOMONIAN  
IN CHARGE  
E. SANCHEZ  
DATE  
5/21/15

A SIGNED & SEALED ORIGINAL OF REV 0 OF THIS DRAWING IS MAINTAINED BY WSCC

**Metro** LOS ANGELES COUNTY METROPOLITAN TRANSPORTATION AUTHORITY

**WALSH-SHEA CORRIDOR CONSTRUCTORS**  
1777 Oakland Blvd.  
Walnut Creek, CA 94598

**HNTB**  
STEVE WHITAKER APPROVED

**FRAN SANCHEZ**  
SUBMITTED

**KEYPLAN**

**CRENSHAW/LAX TRANSIT CORRIDOR PROJECT**  
FLORENCE / WEST STATION  
PARTIAL PLATFORM CANOPY/TICKET PAVILION  
ROOF PLAN

CONTRACT NO	C0988
DRAWING NO	A-4901
SCALE	AS NOTED
SHEET NO	2