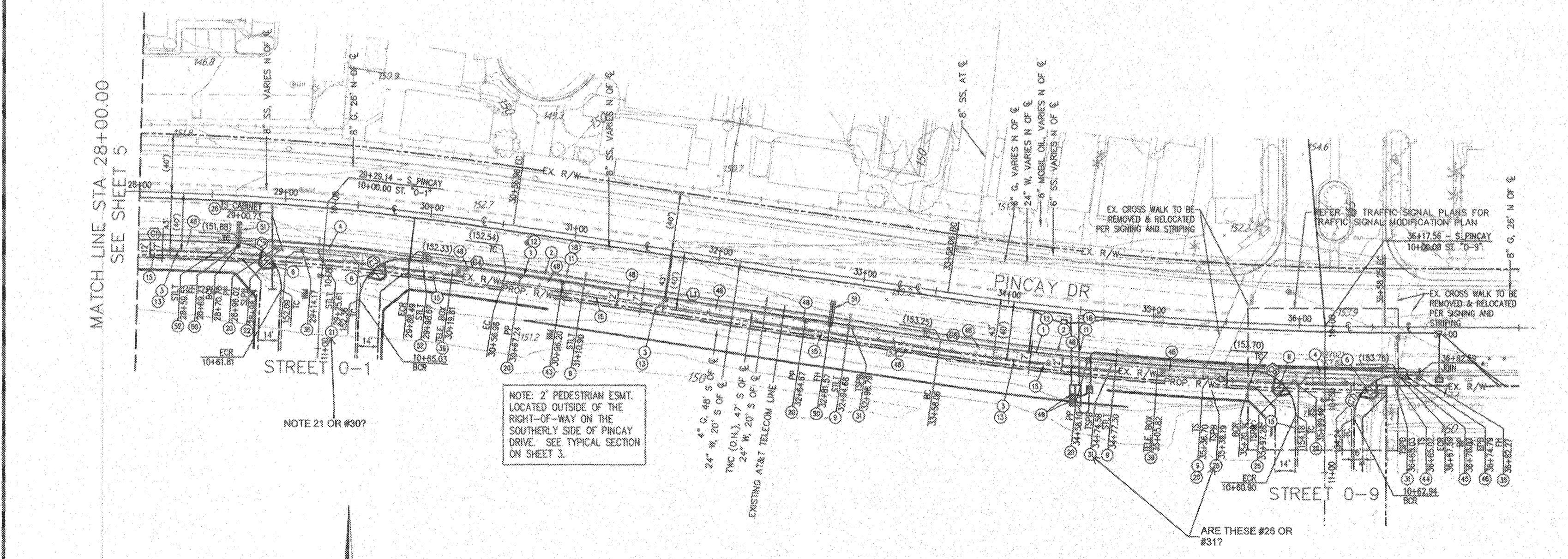


1. CONSTRUCT 6" CURB ONLY PER SPPWC STD PLAN 120-2, TYPE A1-B(150)
2. CONSTRUCT 3.5" WIDE P.C.C. PAVEMENT AND BASE SECTION, STREET SECTION TO MATCH EXISTING MATERIALS AND THICKNESS. FINAL STREET SECTION PER SOILS ENGINEER RECOMMENDATIONS BASED ON THE "R" VALUES OF ON-SITE SOILS, AFTER GRADING.
3. CONSTRUCT 4" P.C.C. OVER 4" C&G SIDEWALK PER SPPWC STD PLAN 112-2, 12" WID. EXPANSION JOINTS SHALL BE PLACED AT 24' INTERVALS, WEAKENED PLANE JOINTS SHALL BE PLACED AT 8' INTERVALS TYPICAL AND BROOM FINISH.
4. CONSTRUCT CROSS GUTTER PER SPPWC STD PLAN 122-2.
5. CONSTRUCT MODIFIED CURB RAMP PER SPPWC STD PLAN 111-5, CASE A TYPE 1, WITH YELLOW (FEDERAL COLOR No. FS 3353B) OF FEDERAL STANDARD 595C DETECTABLE WARNING SURFACE, TRUNCATED DOMES 3" MIN. DEPTH AND FULL WIDTH OF WALKWAY. SEE DETAIL C & D ON SHEET 3.
6. PROTECT IN PLACE EX STREET LIGHT PER APPROVED STREET LIGHT PLAN.
7. SAW CUT LINE, SAW CUT & REMOVE EX CONCRETE PAVEMENT AT JOIN LINE APPROXIMATELY 1.5' OFFSET FROM EXISTING 6" CURB. REMOVE FULL DEPTH C&G.
8. REMOVE EX 6" CURB.
9. REMOVE EX 7" WIDE SIDEWALKS, RAMPS AND VEGETATION WITHIN EXISTING RIGHT-OF-WAY, BEYOND EXISTING RIGHT-OF-WAY REMOVED PER SEPARATE ON-SITE DEMOLITION PLAN.
10. REMOVE EX CHAINLINK FENCE & FENCE POSTS, PER SEPARATE ON-SITE DEMOLITION PLAN.
11. JOIN EX PAVEMENT AND DOWEL IN CONNECTION PER DETAIL A ON SHEET 3 AND SPPWC STD PLAN 134-2.
12. EX POWER POLES TO BE UNDERGROUND, GUY WIRES TO BE REMOVED PER SEPARATE PLAN, BY OTHERS.
13. RELOCATE EX STREET LIGHT PER APPROVED STREET LIGHT PLAN.
14. RELOCATE EX STREET LIGHT PULL BOX PER APPROVED STREET LIGHT PLAN.
15. REPLACE EX TRAFFIC SIGNAL PER SEPARATE TRAFFIC SIGNAL PLAN.
16. REPLACE EX TRAFFIC SIGNAL PULL BOX PER APPROVED TRAFFIC SIGNAL PLAN.
17. REPLACE TRAFFIC SIGNAL BOX TO PROP. NEW GRADE, ADJUST CONDUITS & WIRING PER TRAFFIC SIGNAL PLAN.
18. PROTECT IN PLACE EX FIRE HYDRANT OR FIRE CONNECTION AND ADJUST TO PROP. SIDEWALK GRADE.
19. ADJUST EX DEPT. OF WATER & POWER WATER VALVE WELL OR CAN TO PROP. NEW GRADE.
20. ADJUST EX TELEPHONE MANHOLE TO PROP. NEW GRADE, BY OTHERS.
21. ADJUST EX WATER METER BOX TO PROP. NEW GRADE.
22. REPLACE EX TRAFFIC SIGNAL POLE.
23. PROTECT IN PLACE EX POWER POLE.
24. PROTECT IN PLACE EX ELEC. PULL BOX.
25. CONSTRUCT TREEWELL PER SEPARATE LANDSCAPING PLANS.
26. INSTALL SCE ELECTRICAL VAULT AND/OR TRANSFORMER PAD PER SEPARATE PLANS.
27. INSTALL FIRE HYDRANT PER CITY STD PLAN W-355, SHEET 10 OF 23 AND PROVIDE FIRE HYDRANT PAVEMENT MARKER PER CITY STD PLAN W-355, SHEET 23 OF 23.
28. CONSTRUCT PIPE TRENCH REPAIR PER CITY STD PLAN DS-12.
29. INSTALL RELOCATED STREET LIGHT.



CURVE TABLE				
CURVE #	LENGTH	RADIUS	DELTA	TANGENT
11	112.14'	1967.50'	003°15'56"	56.09'
12	47.20'	30.00'	090°08'33"	30.00'
13	48.90'	30.00'	093°23'05"	31.83'
14	67.35'	1967.50'	001°57'41"	33.68'
15	215.71'	2032.59'	006°04'51"	107.95'
16	45.79'	30.00'	067°27'07"	28.69'
17	47.13'	30.00'	090°00'53"	30.01'

LINE TABLE		
LINE #	LENGTH	BEARING
13	301.10'	S81°15'47"E

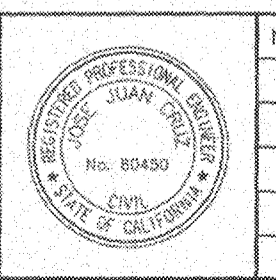
**811**  
Know what's below.  
Call before you dig.  
UNDERGROUND SERVICE ALERT OF SOUTHERN CALIFORNIA

CALL 811  
AT LEAST TWO DAYS  
BEFORE YOU DIG

OWNER / DEVELOPER:  
PINCAY RE, LLC  
211 NORTH STADIUM BLVD., # 201  
COLUMBIA, MO 65203  
RE: LOS ANGELES STADIUM AND  
AT HOLLYWOOD PARK

**DAVID EVANS  
AND ASSOCIATES INC.**  
201 S. FIGUEROA STREET, SUITE 240  
LOS ANGELES, CA 90012  
Phone: 213.337.9880

PREPARED UNDER THE SUPERVISION OF:  
*Jose Cruz*  
JOSE CRUZ, C.E.C. #20450  
10/10/2018  
DATE



NO.	DATE	REVISION DESCRIPTION	REVISOR	APPROVED BY

APPROVED BY: PUBLIC WORKS DIRECTOR  
LOUIS A. ATWELL, R.C.E. 53062 DATE  
SUBMITTED BY:  
DAVID EVANS & ASSOCIATES, INC.  
CHECKED BY:  
ATKINS NORTH AMERICA

**CITY OF INGLEWOOD, CALIFORNIA**  
PUBLIC WORKS DEPARTMENT  
IMPROVEMENT PLANS FOR

**PUBLIC STREET IMPROVEMENT PLANS**  
PINCAY DR. STA 28+00.00 TO STA 36+67.59

PERMIT NUMBER:	PLAN SCALE:	SHEET NO.	PLAN NO.
TBD	AS NOTED	6 OF 6	ST-4679

NS-STP-6  
10/10/2018