

OFF-SITE STREET CONSTRUCTION NOTES

- | NO. | DESCRIPTION |
|-----|---|
| 1 | CONSTRUCT 6" CURB & 18" GUTTER PER SPPWC STD PLAN 120-2, TYPE A2-B(150) |
| 2 | CONSTRUCT 4" P.C.C. OVER 5" C.A.B. SIDEWALK WITH JOINTS PER SPPWC STD. 112-2 AND DECORATIVE FINISH PER LANDSCAPE ARCHITECT PLANS. SIDEWALK WIDTH PER PLAN. |
| 3 | CONSTRUCT RUBBERIZED AC PAVEMENT TO MATCH EXISTING (5.5") AC THICKNESS SECTION PLUS 1" ON 12" MIN CRUSHED AGGREGATE BASE. SEE TYPICAL SECTIONS ON SHEET 3. |
| 4 | GRADE PLANE (MILL) AC PAVEMENT VARIABLE THICKNESS, T=1.5" MIN. (MATCH EXISTING PAVEMENT THICKNESS 5.5") SEE TYPICAL SECTIONS ON SHEET 3. |
| 5 | RUBBERIZED ASPHALT CONCRETE PAVEMENT OVERLAY, VARIABLE THICKNESS. SEE TYPICAL SECTIONS ON SHEET 3. |
| 6 | SAWCUT LINE. SAWCUT AND REMOVE EXISTING AC & BASE. |
| 7 | REMOVE EXISTING CURB & GUTTER. |
| 8 | CONSTRUCT CURB RAMP PER SPPWC STD PLAN 111-5, CASE A TYPE 1, WITH YELLOW (FEDERAL COLOR NO. FS 33538) OF FEDERAL STANDARD 595C DETECTABLE WARNING SURFACE. |
| 9 | CONSTRUCT CROSS GUTTER PER SPPWC STD PLAN 122-2 |
| 10 | REMOVE EXISTING SIDEWALKS, RAMPS AND VEGETATION |
| 11 | REPLACE EXISTING STREET LIGHT PER APPROVED STREET LIGHT PLAN. |
| 12 | REMOVE EXISTING SIGN. |
| 13 | REPLACE EXISTING STREET LIGHT PER PRAIRIE STREET LIGHT PLAN. |
| 14 | REPLACE EXISTING STREET LIGHT PULLBOX PER PRAIRIE STREET LIGHT PLAN. |
| 15 | REPLACE EXISTING TRAFFIC SIGNAL PULLBOX TO FINISH GRADE, ADJUST CONDUIT & WIRING PER TRAFFIC SIGNAL PLANS. |
| 16 | N/A. |
| 17 | REPLACE EXISTING STREET LIGHT PULLBOX TO GRADE, ADJUST CONDUITS & WIRING |
| 18 | N/A. |
| 19 | N/A. |
| 20 | DEMOLISH AND REMOVE EXISTING CROSS GUTTER. |
| 21 | ADJUST EXISTING WATER VALVE TO FINISH GRADE. |
| 22 | REPLACE TRAFFIC SIGNAL PULLBOX AND CABINET/CONCRETE PAD PER TRAFFIC SIGNAL PLAN. |
| 23 | ADJUST EXISTING ELECTRIC VAULT TO FINISH GRADE |
| 24 | REPLACE TRAFFIC SIGNAL PER TRAFFIC SIGNAL PLAN. |
| 25 | ADJUST EXISTING GAS VALVE TO FINISH GRADE. |
| 26 | N/A. |
| 27 | ADJUST SEWER MANHOLE TO FINISH GRADE. |
| 28 | N/A. |
| 29 | ADJUST TELEPHONE MANHOLE TO FINISH GRADE. |
| 30 | PLANTING AREAS PER LANDSCAPE ARCHITECT'S PLAN, WIDTH PER PLAN |
| 31 | NEW FIRE HYDRANT PER SEPARATE IMPROVEMENT PLANS |
| 32 | CONSTRUCT CONCRETE PAVEMENT JOIN PER SPPWC STD. 134-2 TO EXISTING SIDEWALK AND CURB & GUTTER |
| 33 | PROTECT IN PLACE EXISTING CATCH BASIN LOCAL DEPRESSION, SAWCUT EXISTING CURB & GUTTER AT EDGE OF EXISTING CATCH BASIN AND LOCAL DEPRESSION AND JOIN WITH NEW REPLACEMENT CURB AND GUTTER. |
| 34 | PROTECT IN PLACE EXISTING CONCRETE BUS PAD. |

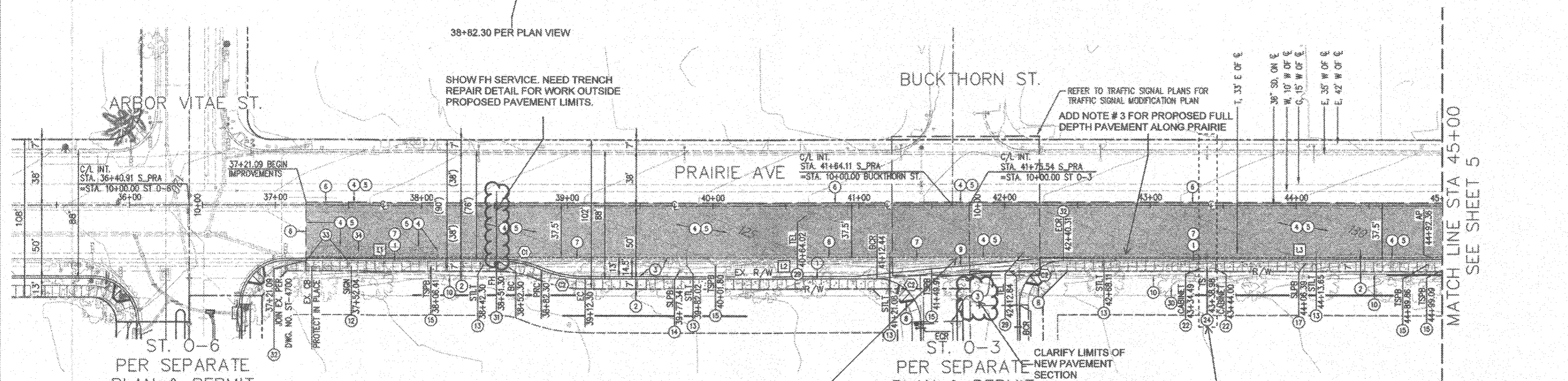
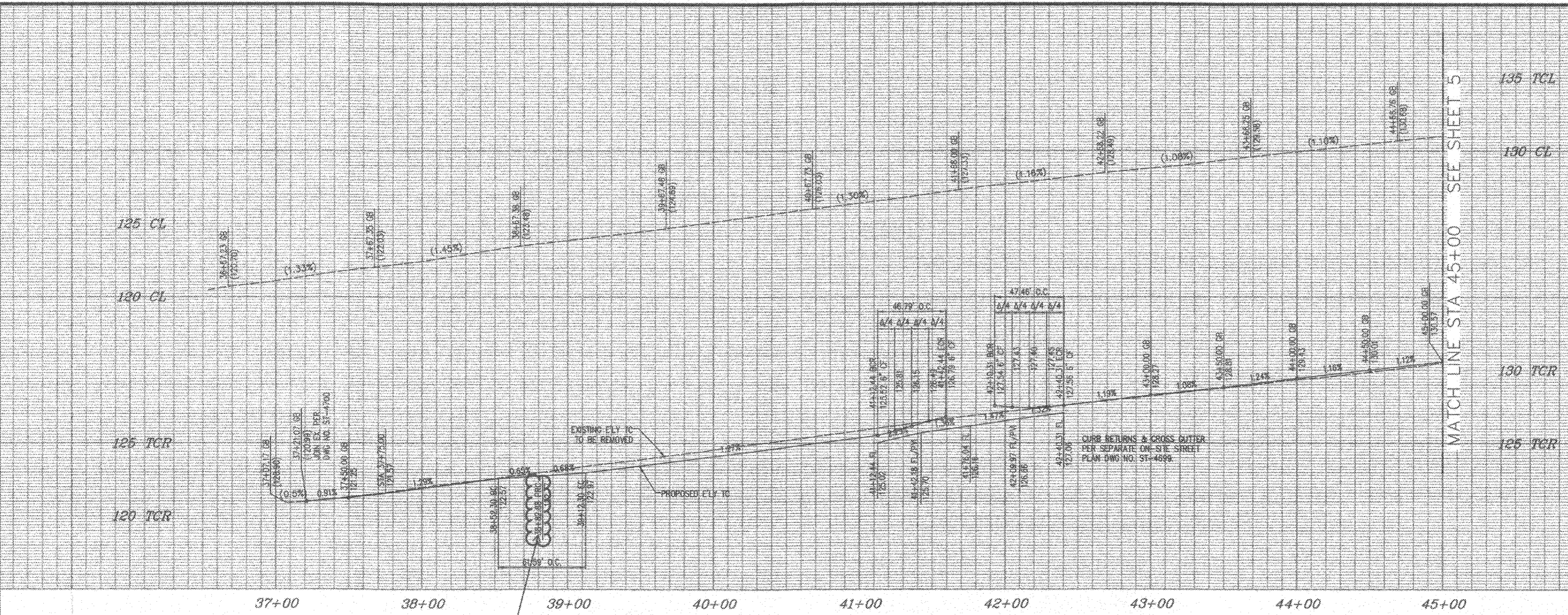
SEE COMMENTS FOR CONSTRUCTION NOTES ON SHEET 2 OF 5

LINE TABLE

LINE #	LENGTH	BEARING
L1	131.21'	N00°07'57.99"E
L2	200.14'	N00°07'57.99"E
L3	259.69'	N00°07'57.99"E

CURVE TABLE

CURVE #	LENGTH	RADIUS	DELTA	TANGENT
C1	30.79'	78.00'	022°37'12"	15.60'
C2	30.79'	78.00'	022°37'12"	15.60'
C3	46.79'	30.00'	089°21'15"	29.66'
C4	47.46'	30.00'	090°38'47"	30.34'



811
Know what's below.
Call before you dig.
UNDERGROUND SERVICE ALERT OF SOUTHERN CALIFORNIA

CALL 811
AT LEAST TWO DAYS
BEFORE YOU DIG

OWNER / DEVELOPER:
PINCAY RE, LLC
211 NORTH STADIUM BLVD., # 201
COLUMBIA, MO 65203
RE: LOS ANGELES STADIUM AND AT HOLLYWOOD PARK

DAVID EVANS AND ASSOCIATES INC.
201 S. FIGUEROA STREET, SUITE 240
LOS ANGELES, CA 90012
Phone: 213.337.3680

PREPARED UNDER THE SUPERVISION OF:
Jose Cruz
JOSE CRUZ, C.E.C. #0430
01/10/2019
DATE

REGISTERED PROFESSIONAL ENGINEER
JOAN CRUZ
No. 80450
CIVIL
STATE OF CALIFORNIA

NO.	DATE	REVISION DESCRIPTION	REVISED BY	APPROVED BY (DATE)	DATE

APPROVED BY: _____ DATE _____
PUBLIC WORKS DIRECTOR

SUBMITTED BY: _____
DAVID EVANS & ASSOCIATES, INC.

CHECKED BY: _____
ATKINS NORTH AMERICA, INC.

CITY OF INGLEWOOD, CALIFORNIA
PUBLIC WORKS DEPARTMENT
IMPROVEMENT PLANS FOR
L.A. STADIUM AND ENTERTAINMENT DISTRICT
AT HOLLYWOOD PARK
PRAIRIE AVENUE STREET IMPROVEMENT PLANS

PERMIT NUMBER: _____ PLAN SCALE: AS NOTED SHEET NO. 4 OF 5 PLAN NO. ST-4680
01/10/2019