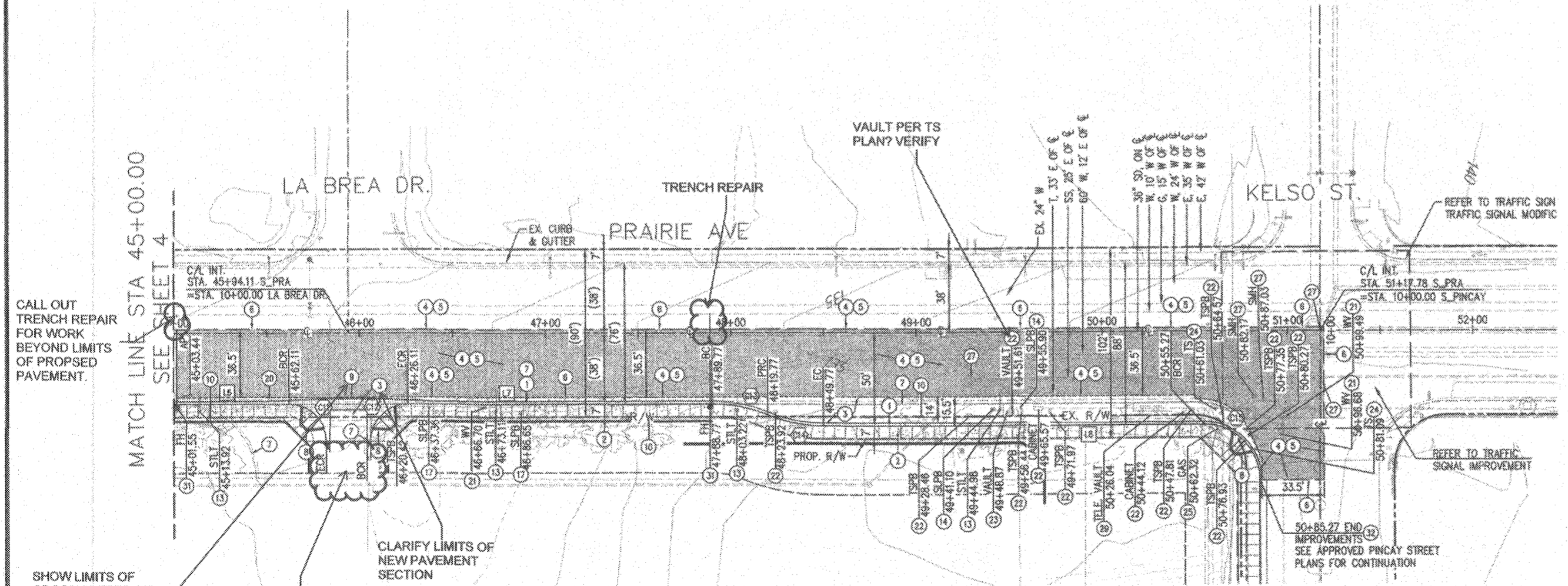
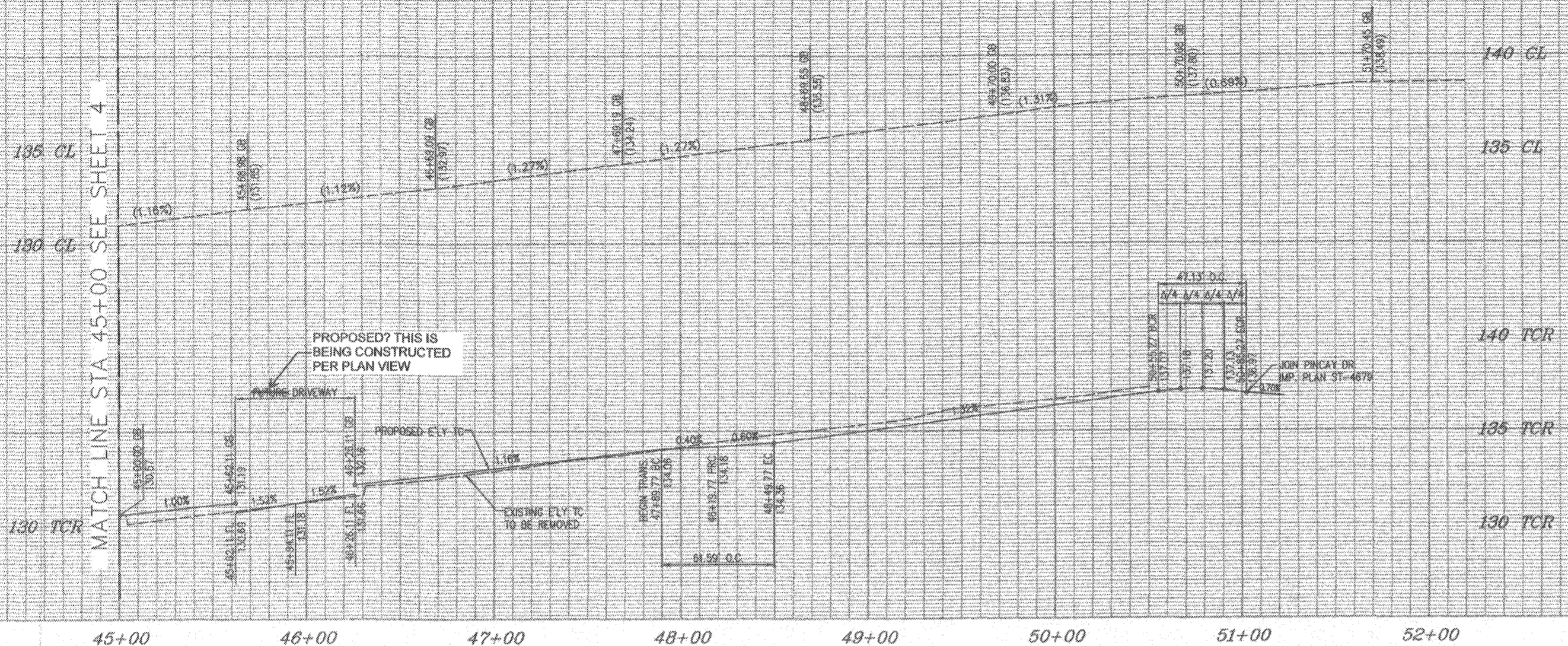


OFF-SITE STREET CONSTRUCTION NOTES

NO.	DESCRIPTION
1	CONSTRUCT 6" CURB & 18" GUTTER PER SPPWC STD PLAN 120-2, TYPE A2-6(150)
2	CONSTRUCT 4" P.C.C. OVER 5" C.A.B. SIDEWALK WITH JOINTS PER SPPWC STD. 112-2 AND DECORATIVE FINISH PER LANDSCAPE ARCHITECT PLANS, SIDEWALK WIDTH PER PLAN
3	CONSTRUCT RUBBERIZED AC PAVEMENT TO MATCH EXISTING (5.5") AC THICKNESS SECTION PLUS 1" ON 12" MIN CRUSHED AGGREGATE BASE. SEE TYPICAL SECTIONS ON SHEET 3.
4	COMPAVE (MILL) AC PAVEMENT VARIABLE THICKNESS, T=1.5" MIN. (MATCH EXISTING PAVEMENT THICKNESS 5.5") SEE TYPICAL SECTIONS ON SHEET 3.
5	RUBBERIZED ASPHALT CONCRETE PAVEMENT OVERLAY, VARIABLE THICKNESS. SEE TYPICAL SECTIONS ON SHEET 3.
6	SAWCUT LINE. SAWCUT AND REMOVE EXISTING AC & BASE.
7	REMOVE EXISTING CURB & GUTTER.
8	CONSTRUCT CURB RAMP PER SPPWC STD PLAN 111-5, CASE A TYPE 1, WITH YELLOW (FEDERAL COLOR NO. FS 33538) OF FEDERAL STANDARD 595C DETECTABLE WARNING SURFACE.
9	CONSTRUCT CROSS GUTTER PER SPPWC STD PLAN 122-2
10	REMOVE EXISTING SIDEWALKS, RAMPS AND VEGETATION
11	REPLACE EXISTING STREET LIGHT PER APPROVED STREET LIGHT PLAN.
12	REMOVE EXISTING SIGN.
13	REPLACE EXISTING STREET LIGHT PER PRAIRIE STREET LIGHT PLAN.
14	REPLACE EXISTING STREET LIGHT PULLBOX PER PRAIRIE STREET LIGHT PLAN.
15	REPLACE EXISTING TRAFFIC SIGNAL PULLBOX TO FINISH GRADE, ADJUST CONDUIT & WIRING PER TRAFFIC SIGNAL PLAN.
16	N/A
17	REPLACE EXISTING STREET LIGHT PULLBOX TO GRADE, ADJUST CONDUITS & WIRING
18	N/A
19	N/A
20	DEMOLISH AND REMOVE EXISTING CROSS GUTTER.
21	ADJUST EXISTING WATER VALVE TO FINISH GRADE.
22	REPLACE TRAFFIC SIGNAL PULLBOX AND CABINET/CONCRETE PAD PER TRAFFIC SIGNAL PLAN.
23	ADJUST EXISTING ELECTRIC VAULT TO FINISH GRADE
24	REPLACE TRAFFIC SIGNAL PER TRAFFIC SIGNAL PLAN.
25	ADJUST EXISTING GAS VALVE TO FINISH GRADE.
26	N/A
27	ADJUST SEWER MANHOLE TO FINISH GRADE.
28	N/A
29	ADJUST TELEPHONE MANHOLE TO FINISH GRADE.
30	PLANTING AREAS PER LANDSCAPE ARCHITECT'S PLAN, WIDTH PER PLAN
31	NEW FIRE HYDRANT PER SEPARATE IMPROVEMENT PLANS
32	CONSTRUCT CONCRETE PAVEMENT JOIN PER SPPWC STD. 134-2 TO EXISTING SIDEWALK AND CURB & GUTTER.
33	PROTECT IN PLACE EXISTING CATCH BASIN LOCAL DEPRESSION, SAWCUT EXISTING CURB & GUTTER AT EDGE OF EXISTING CATCH BASIN AND LOCAL DEPRESSION AND JOIN WITH NEW REPLACEMENT CURB AND GUTTER.
34	PROTECT IN PLACE EXISTING CONCRETE BUS PAD.



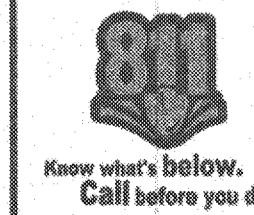
CURVE TABLE

CURVE #	LENGTH	RADIUS	DELTA	TANGENT
11	31.42'	20.00'	090°00'00"	20.00'
12	31.42'	20.00'	090°00'00"	20.00'
13	30.79'	78.00'	022°37'12"	15.60'
14	30.79'	78.00'	022°37'12"	15.60'
15	47.13'	30.00'	090°00'15"	30.00'

LINE TABLE

LINE #	LENGTH	BEARING
16	62.11'	N00°07'57.99"E
17	163.66'	N00°07'57.99"E
18	205.50'	N00°07'57.99"E

SEE COMMENTS FOR CONSTRUCTION NOTES ON SHEET 2 OF 5



CALL 811
AT LEAST TWO DAYS
BEFORE YOU DIG



OWNER / DEVELOPER:
PINCAY RE, LLC
211 NORTH STADIUM BLVD., # 201
COLUMBIA, MO 65203
RE: LOS ANGELES STADIUM AND
AT HOLLYWOOD PARK

DAVID EVANS AND ASSOCIATES INC.
201 S. FIGUEROA STREET, SUITE 240
LOS ANGELES, CA 90012
Phone: 213.337.3680



PREPARED UNDER THE SUPERVISION OF:
Jose Cruz
01/10/2019
DATE

NO.	DATE	REVISION DESCRIPTION	REVISED BY	APPROVED BY (BY CITY OF INGLEWOOD)	DATE	APPROVED BY:
						PUBLIC WORKS DIRECTOR _____ DATE _____
						SUBMITTED BY: DAVID EVANS & ASSOCIATES, INC.
						CHECKED BY: ATKINS NORTH AMERICA, INC.

CITY OF INGLEWOOD, CALIFORNIA
PUBLIC WORKS DEPARTMENT
IMPROVEMENT PLANS FOR
L.A. STADIUM AND ENTERTAINMENT DISTRICT
AT HOLLYWOOD PARK
PRAIRIE AVENUE STREET IMPROVEMENT PLANS

PERMIT NUMBER: _____ PLAN SCALE: **AS NOTED** SHEET NO. **5 OF 5** PLAN NO. **ST-4680**